

# Parts catalog

- “Legend” on page 540
- “Assembly 1: Covers” on page 543
- “Assembly 2: Paper path” on page 545
- “Assembly 3: Fusers” on page 547
- “Assembly 4: Electronics” on page 549
- “Assembly 5: Drive motors” on page 553
- “Assembly 6: Duplex” on page 555
- “Assembly 7: Frame” on page 557
- “Assembly 8: Control panel” on page 559
- “Assembly 9: Paper tray” on page 563
- “Assembly 10: Input options” on page 565
- “Assembly 11: 250-sheet tray option” on page 567
- “Assembly 12: 550-sheet tray option” on page 569
- “Assembly 13: High capacity input tray option 1” on page 571
- “Assembly 14: High capacity input tray option 2” on page 573
- “Assembly 15: Output options” on page 575
- “Assembly 16: Output expander option” on page 577
- “Assembly 17: High capacity output expander option” on page 579
- “Assembly 18: Staple finisher option 1” on page 581
- “Assembly 19: Staple finisher option 2” on page 583
- “Assembly 20: Mailbox option 1” on page 585
- “Assembly 21: Mailbox option 2” on page 587
- “Assembly 22: Miscellaneous” on page 589
- “Assembly 23: Power cords” on page 593

## Legend

The following column headings are used in the parts catalog:

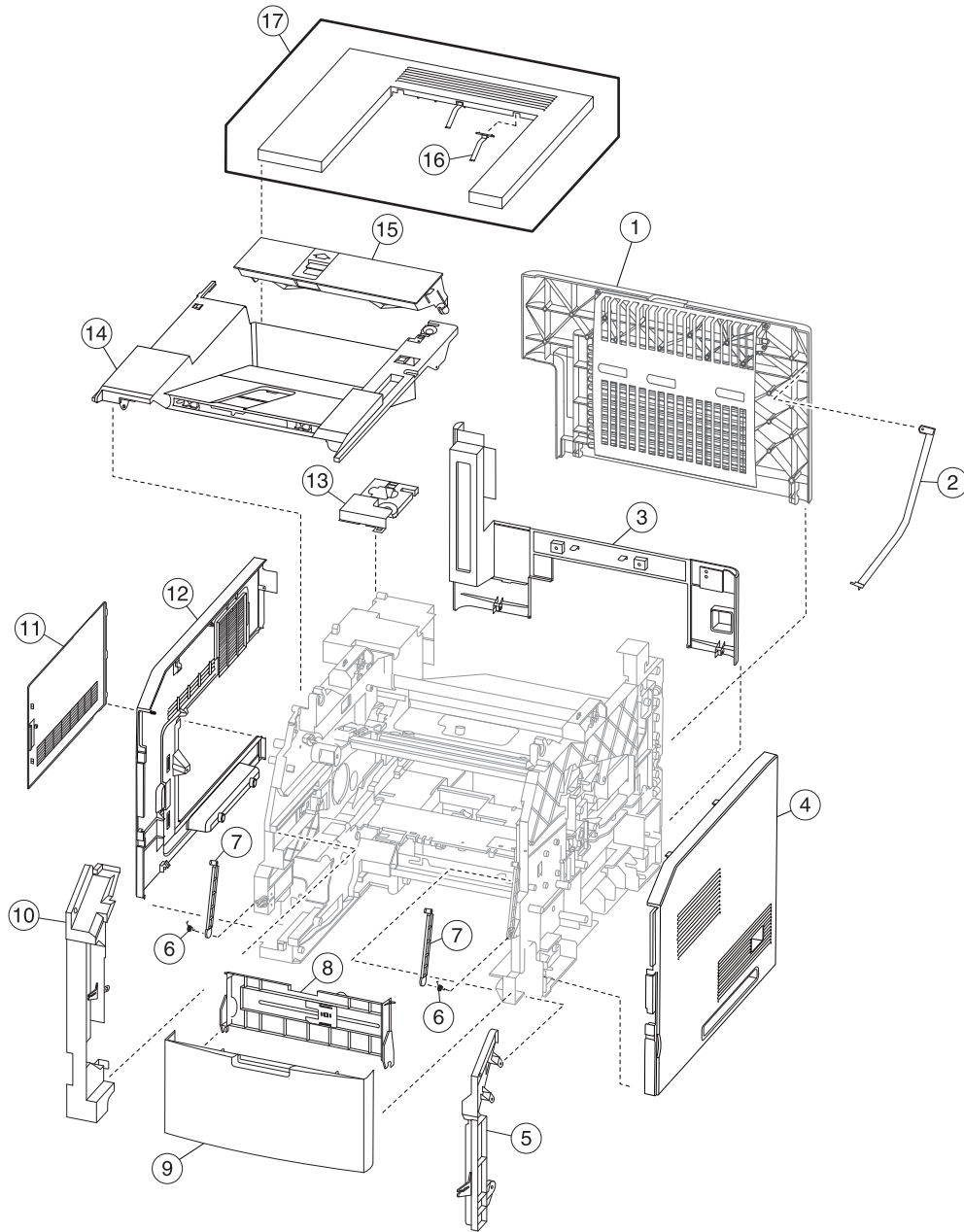
- **Asm-index**—Identifies the assembly and the item in the diagram. For example, 3-1 indicates Assembly 3 and item 1 in the table.
- **Part number**—Identifies the unique number that correlates with the part.
- **Units/mach**—Refers to the number of units actually used in the base machine or product.
- **Units/option**—Refers to the number of units in a particular option.
- **Units/FRU**—Refers to the number of units in a particular FRU.
- **Description**—A brief description of the part.

The following abbreviations are used in the parts catalog:

- **NS** (not shown) in the Asm-index column indicates that the part is procurable but is not pictured in the illustration.
- **PP** (parts packet) in the Description column indicates that the part is contained in a parts packet.



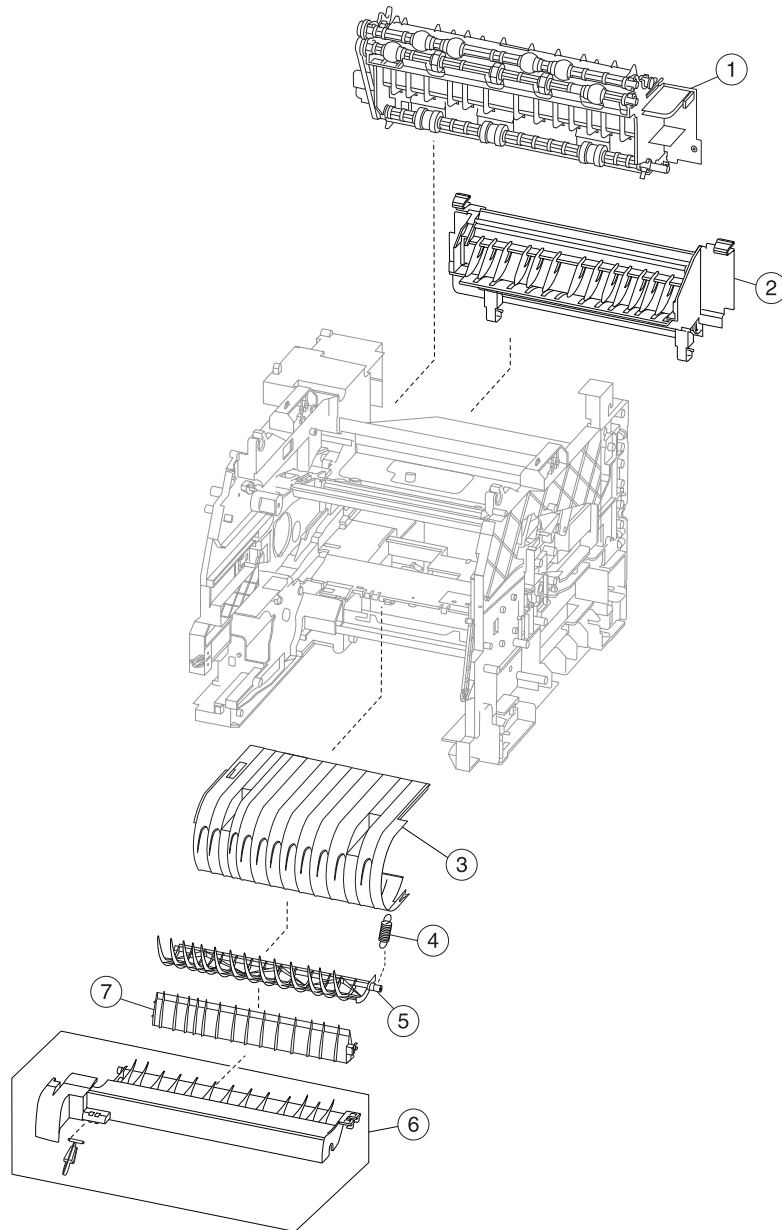
# Assembly 1: Covers



## Assembly 1: Covers

Asm-index	P/N	Units/mach	Units/FRU	Description	Removal procedure
1	40X7678	1	1	Rear door	See <b>“Rear door removal” on page 285.</b>
2	40X7726	1	1	Rear door support	N/A
3	40X7671	1	1	Rear lower cover (integrated 550-sheet tray)	See <b>“Rear lower cover removal” on page 280.</b>
3	40X8404	1	1	Rear lower cover (integrated 250-sheet tray)	See <b>“Rear lower cover removal” on page 280.</b>
4	40X7680	1	1	Right cover (integrated 550-sheet tray)	See <b>“Right cover removal” on page 283.</b>
4	40X8403	1	1	Right cover (integrated 250-sheet tray)	See <b>“Right cover removal” on page 283.</b>
5	40X7670	1	1	Right inner cover	See <b>“Right inner cover removal” on page 309.</b>
6	40X7690	2	1	Torsion spring	N/A
7	40X7715	2	1	Front door support link	N/A
8	40X7725	1	1	MPF tray	See <b>“MPF tray removal” on page 308.</b>
9	40X7674	1	1	Front door	See <b>“Front door removal” on page 288.</b>
10	40X7669	1	1	Inner left cover	See <b>“Left inner cover removal” on page 295.</b>
11	40X7672	1	1	Controller board access cover	See <b>“Controller board access cover removal” on page 350.</b>
12	40X7679	1	1	Left cover (integrated 550-sheet tray)	See <b>“Left cover removal” on page 277.</b>
12	40X8402	1	1	Left cover (integrated 250-sheet tray)	See <b>“Left cover removal” on page 277.</b>
13	40X7677	1	1	Bin sensor cover	See <b>“Output bin sensor cover removal” on page 326.</b>
14	40X7675	1	1	Standard bin cover (integrated 550-sheet tray)	See <b>“Standard bin cover removal” on page 330.</b>
14	40X8397	1	1	Standard bin cover (integrated 250-sheet tray)	See <b>“Standard bin cover removal” on page 330.</b>
15	40X8398	1	1	Fuser wiper cover (hot roll fuser printer only)	N/A
16	40X7604	2	1	Output bin guide	N/A
17	40X7673	1	1	Top cover	See <b>“Top cover removal” on page 282.</b>

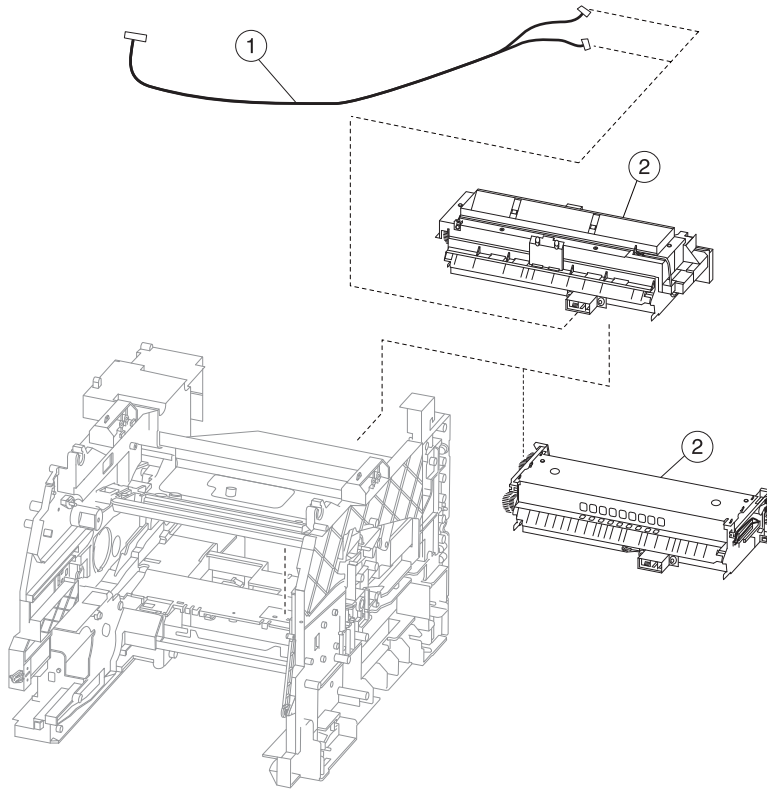
## Assembly 2: Paper path



## Assembly 2: Paper path

Asm-index	P/N	Units/mach	Units/FRU	Description	Removal procedure
1	40X7602	1	1	Upper redrive	See <b>“Upper redrive removal”</b> on page 331.
2	40X7588	1	1	Fuser access door (belt fuser printers only)	See <b>“Fuser access door removal”</b> on page 324.
2	40X8399	1	1	Fuser access door (hot roll fuser printers only)	See <b>“Fuser access door removal”</b> on page 324.
3	40X7587	1	1	Inner guide deflector	See <b>“Inner guide deflector removal”</b> on page 289.
4	40X7585	1	1	Recoil spring	N/A
5	40X7584	1	1	Duplex exit diverter	See <b>“Duplex exit diverter removal”</b> on page 286.
6	40X7583	1	1	Media turn guide	See <b>“Media turn guide removal”</b> on page 299.
7	40X7586	1	1	Media vertical guide	See <b>“Media vertical guide removal”</b> on page 300.

## Assembly 3: Fusers

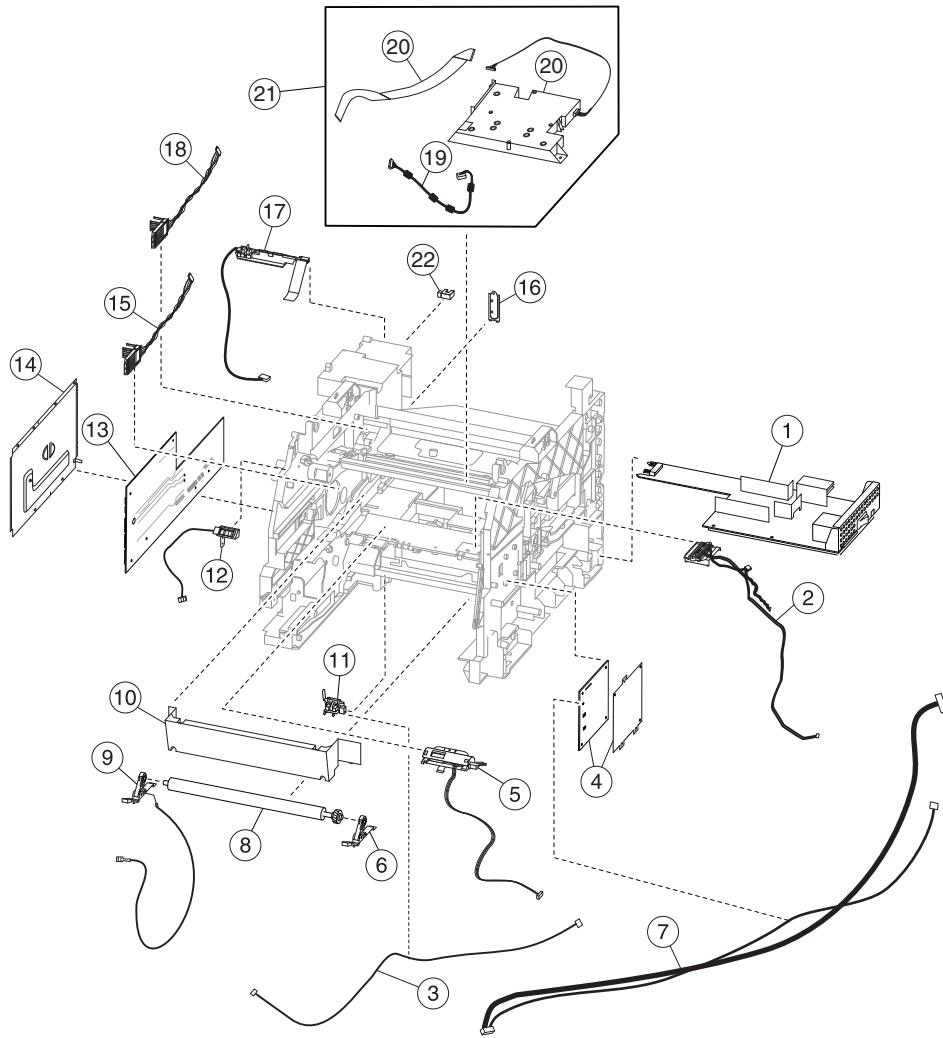




## Assembly 3: Fusers

Asm-index	P/N	Units/mach	Units/FRU	Description	Removal procedure
1	40X7577	1	1	Fuser data cable	N/A
2	40X7743	1	1	MS81x Return Program Fuser Type 00, 110-120V Letter	See <b>"Fuser removal"</b> on page 322.
2	40X7744	1	1	MS81x Return Program Fuser Type 01, 220-240V A4	See <b>"Fuser removal"</b> on page 322.
2	40X7745	1	1	MS81x Return Program Fuser Type 02, 100V A4	See <b>"Fuser removal"</b> on page 322.
2	40X7581	1	1	MS81x Return Program Fuser Type 03, 110-120V A4	See <b>"Fuser removal"</b> on page 322.
2	40X7734	1	1	MS81x Return Program Fuser Type 04, 220-240V Letter	See <b>"Fuser removal"</b> on page 322.
2	40X8016	1	1	MS81x Fuser Type 05, 110-120V Letter	See <b>"Fuser removal"</b> on page 322.
2	40X8017	1	1	MS81x Fuser Type 06, 220-240V A4	See <b>"Fuser removal"</b> on page 322.
2	40X8018	1	1	MS81x Fuser Type 07, 100V A4	See <b>"Fuser removal"</b> on page 322.
2	40X8019	1	1	MS81x Fuser Type 08, 110-120V A4	See <b>"Fuser removal"</b> on page 322.
2	40X8020	1	1	MS81x Fuser Type 09, 220-240V Letter	See <b>"Fuser removal"</b> on page 322.
2	40X8503	1	1	MS71x Return Program Fuser Type 11, 110-120V contact	See <b>"Fuser removal"</b> on page 322.
2	40X8504	1	1	MS71x Return Program Fuser Type 13, 220-240V contact	See <b>"Fuser removal"</b> on page 322.
2	40X8505	1	1	MS71x Return Program Fuser Type 15, 100V contact	See <b>"Fuser removal"</b> on page 322.
2	40X8506	1	1	MS71x Fuser Type 17, 110v contact	See <b>"Fuser removal"</b> on page 322.
2	40X8507	1	1	MS71x Fuser Type 19, 220v contact	See <b>"Fuser removal"</b> on page 322.
2	40X8508	1	1	MS71x Fuser Type 21, 100v contact	See <b>"Fuser removal"</b> on page 322.

# Assembly 4: Electronics



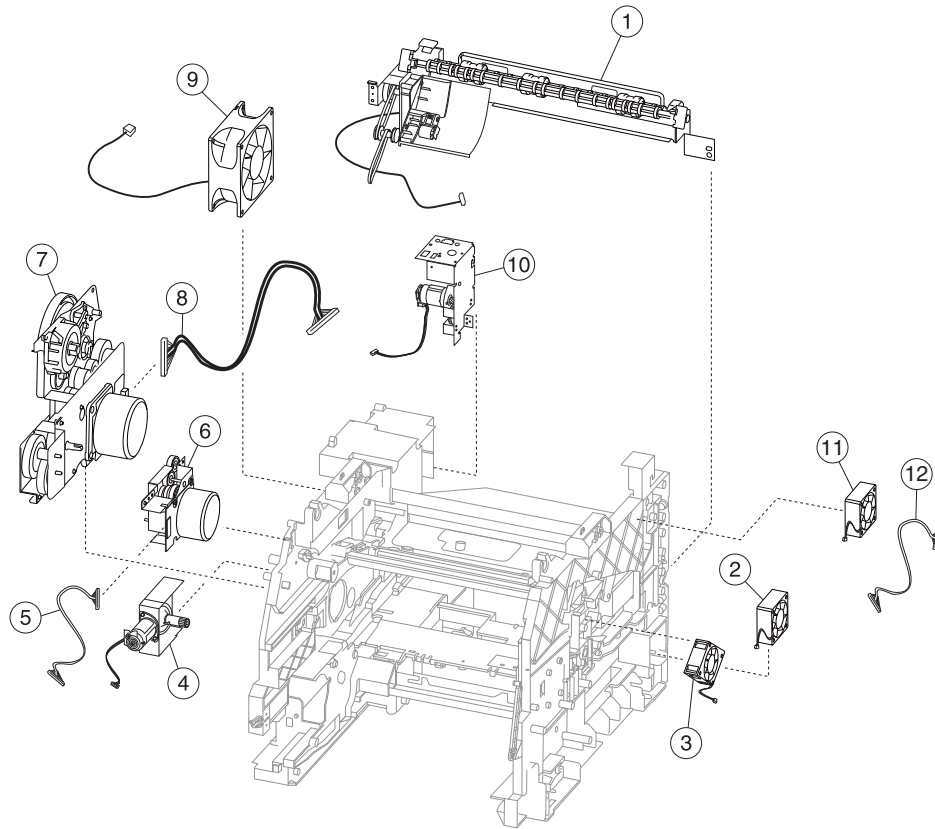
## Assembly 4: Electronics

Asm-index	P/N	Units/mach	Units/FRU	Description	Removal procedure
1	40X7694	1	1	LVPS (universal)	See <b>“LVPS removal” on page 366.</b>
2	40X7685	1	1	Toner level / imaging unit high voltage contact	See <b>“HVPS removal” on page 365.</b>
3	40X7688	1	1	Input sensor cable	N/A
4	40X7578	1	1	HVPS	See <b>“HVPS removal” on page 365.</b>
5	40X7686	1	1	Sensor (toner density) Includes shutter and cable	See <b>“Transfer roller right arm removal” on page 314.</b>
6	40X7606	1	1	Transfer roller right arm	See <b>“Transfer roller right arm removal” on page 314.</b>
7	40X7699	1	1	HVPS/toner cartridge fan cable	N/A
8	40X7582	1	1	Transfer roller	See <b>“Transfer roller removal” on page 317.</b>
9	40X7605	1	1	Transfer roller left arm with cable	See <b>“Transfer roller left arm with cable removal” on page 313.</b>
10	40X8365	1	1	Printhead access cover	See <b>“Laser printhead removal” on page 291.</b>
11	40X7607	1	1	Sensor (input)	See <b>“Sensor (input) removal” on page 310.</b>
12	40X7693	1	1	Sensor (control panel interlock) Includes bracket and cable	See <b>“Sensor (control panel interlock) removal” on page 359.</b>
13	40X7570	1	1	Controller board (2.4” display printers only)	See <b>“Controller board removal” on page 349.</b>
13	40X7571	1	1	Controller board (4.3” tilting display printers only)	See <b>“Controller board removal” on page 349.</b>

Asm-index	P/N	Units/mach	Units/FRU	Description	Removal procedure
13	40X7572	1	1	Controller board (7" tilting display printers only)	See <b>"Controller board removal"</b> on page 349.
14	40X7722	1	1	Controller board access shield	See <b>"Controller board access shield removal"</b> on page 351.
15	40X7692	1	1	Toner cartridge smart chip contact with cable	See <b>"Laser printhead removal"</b> on page 291.
16	40X8034	1	1	Option card cover plate	N/A
17	40X7691	1	1	Sensor (standard bin full) with output bin guide	See <b>"Sensor (standard bin full) removal"</b> on page 329.
18	40X7689	1	1	Imaging unit smart chip contact with cable	See <b>"Laser printhead removal"</b> on page 291.
19	40X7707	1	1	Printhead power cable	See <b>"Laser printhead removal"</b> on page 291.
20	40X7708	1	1	Printhead video cable	See <b>"Laser printhead removal"</b> on page 291.
21	40X7597	1	1	Laser printhead (quad diode) (belt fuser printers only) Includes data and power cables	See <b>"Laser printhead removal"</b> on page 291.
21	40X8481	1	1	Laser printhead (dual diode) (hot roller fuser printers only) Includes data and power cables	See <b>"Laser printhead removal"</b> on page 291.
22	40X7592	1	1	Interrupt sensor <ul style="list-style-type: none"> <li>• sensor (rear door interlock)</li> </ul>	See <b>"Sensor (rear door interlock) removal"</b> on page 328.



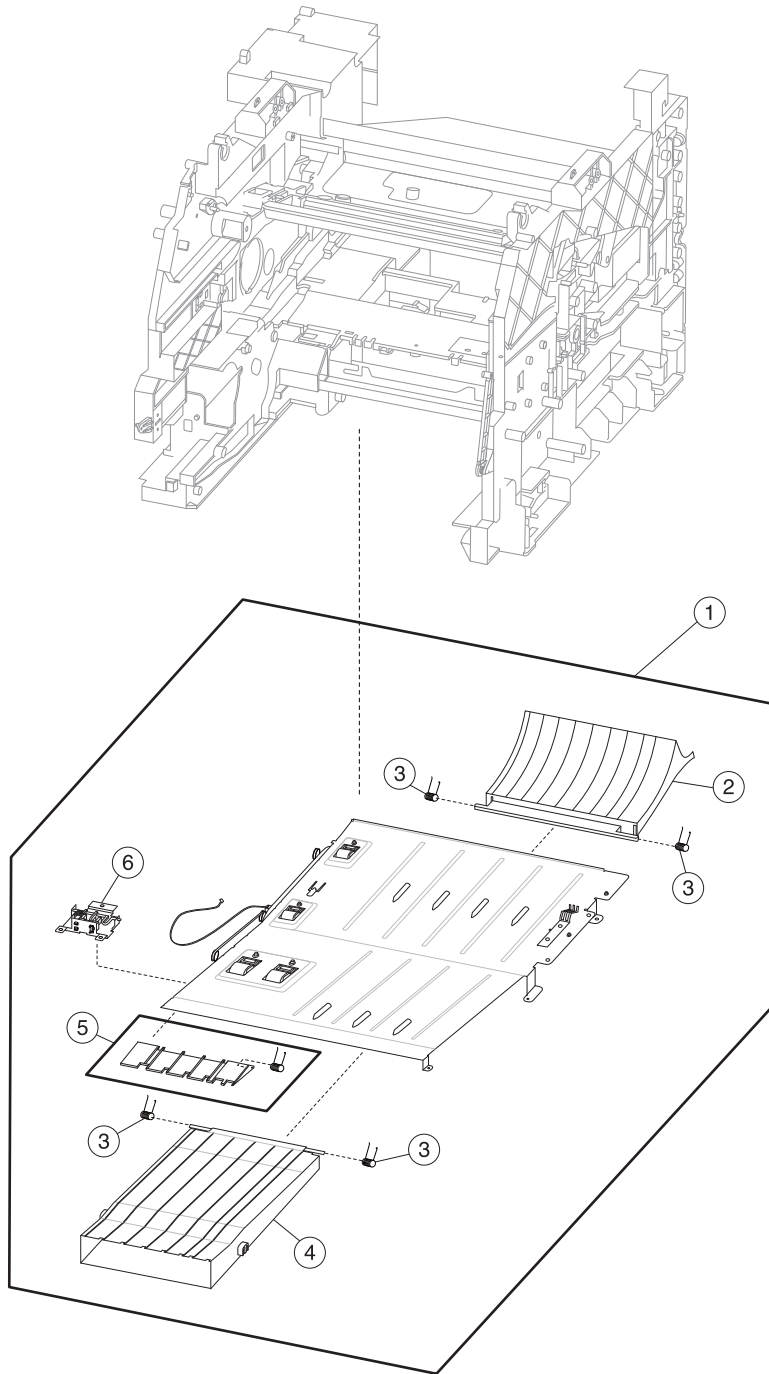
## Assembly 5: Drive motors



## Assembly 5: Drive motors

Asm-index	P/N	Units/mach	Units/FRU	Description	Removal procedure
1	40X7684	1	1	Duplex motor with cable	See <b>“Duplex motor removal”</b> on page 320.
2	40X7695	1	1	Duplex cooling fan	See <b>“Duplex cooling fan removal”</b> on page 364.
3	40X7580	1	1	Cartridge cooling fan	See <b>“Cartridge cooling fan removal”</b> on page 363.
4	40X7596	1	1	Toner add motor with cable	See <b>“Toner add motor removal”</b> on page 361.
5	40X7576	1	1	Fuser drive motor cable	See <b>“Fuser drive motor removal”</b> on page 351.
6	40X7595	1	1	Fuser drive motor (belt fuser printers only)	See <b>“Fuser drive motor removal”</b> on page 351.
6	40X8401	1	1	Fuser drive motor (hot roll fuser printers only)	See <b>“Fuser drive motor removal”</b> on page 351.
7	40X7594	1	1	Main drive motor	See <b>“Main drive motor removal”</b> on page 354.
8	40X7574	1	1	Main motor cable	See <b>“Main cooling fan removal”</b> on page 353.
9	40X7579	1	1	Main cooling fan with cable	See <b>“Main cooling fan removal”</b> on page 353.
10	40X7682	1	1	Upper redrive motor with cable	See <b>“Upper redrive removal”</b> on page 331.
11	40X8483	1	1	Fuser cooling fan (hot roll fuser printers only)	N/A
12	40X8484	1	1	Fuser cooling fan cable (hot roll fuser printers only)	N/A

# Assembly 6: Duplex

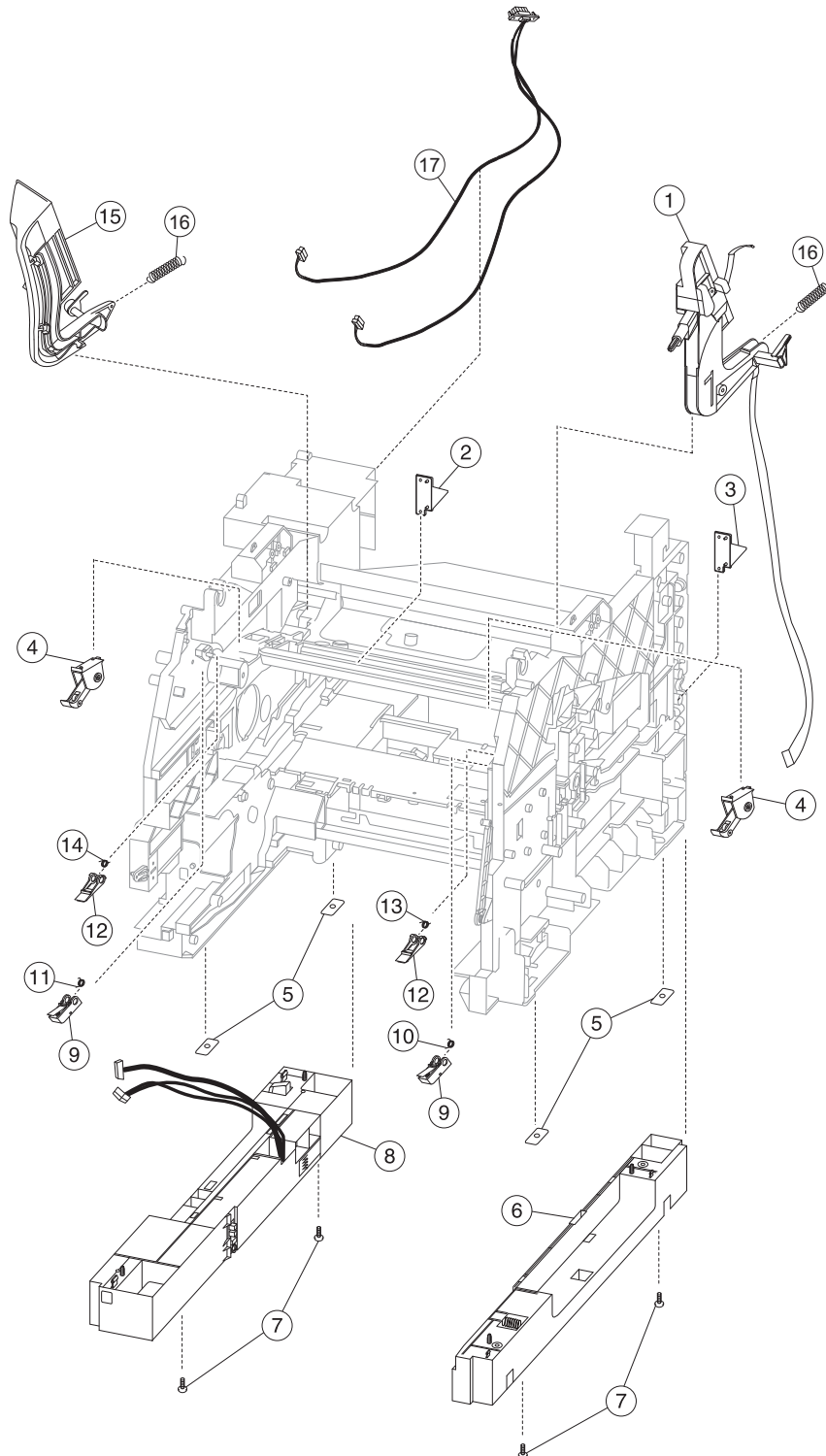




## Assembly 6: Duplex

Asm-index	P/N	Units/mach	Units/FRU	Description	Removal procedure
1	40X7683	1	1	Internal duplex with cable	N/A
2	40X7668	1	1	Duplex rear flap	See <b>“Duplex rear flap removal” on page 336.</b>
3	40X7723	4	1	Torsion spring	N/A
4	40X7667	1	1	Duplex front flap	See <b>“Duplex front flap removal” on page 335.</b>
5	40X7952	1	1	Duplex jam release guide	N/A
6	40X7697	1	1	Sensor (duplex path) with cable	See <b>“Sensor (duplex path) removal” on page 344.</b>

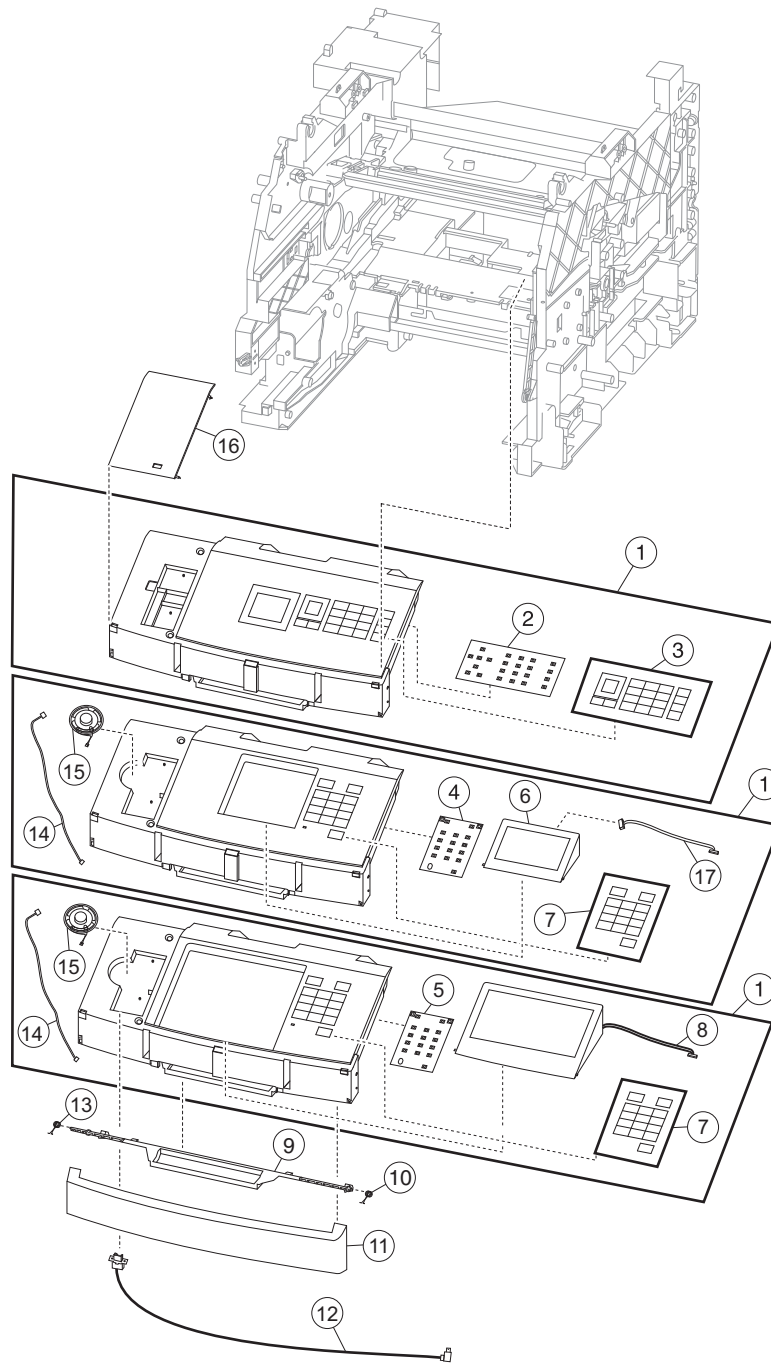
# Assembly 7: Frame



## Assembly 7: Frame

Asm-index	P/N	Units/mach	Units/FRU	Description	Removal procedure
1	40X8316	1	1	Right control panel hinge, with control panel cable	See <b>“Right control panel hinge removal” on page 403.</b>
2	40X7732	1	1	Left frame pivot	See <b>“Left frame pivot removal” on page 325.</b>
3	40X7733	1	1	Right frame pivot	See <b>“Right frame pivot removal” on page 327.</b>
4	40X7714	2	1	Imaging unit clamp	N/A
5	40X7589	4	1	Fastener plate	N/A
6	40X7728	1	1	Right frame extension with tray latch (integrated 550-sheet tray)	See <b>“Right frame extension” on page 343.</b>
6	40X8408	1	1	Right frame extension (integrated 250-sheet tray)	See <b>“Right frame extension” on page 343.</b>
7	40X7590	4	1	M5x12 screw	N/A
8	40X7727	1	1	Left frame extension (integrated 550-sheet tray) <ul style="list-style-type: none"> <li>• with media size sensor with cable</li> <li>• with input option interface cable</li> <li>• with sensor (media tray position) with cable</li> </ul>	See <b>“Left frame extension removal” on page 337.</b>
8	40X8407	1	1	Left frame extension (integrated 250-sheet tray) <ul style="list-style-type: none"> <li>• with media size sensor with cable</li> <li>• with input option interface cable</li> <li>• with sensor (media tray position) with cable</li> </ul>	See <b>“Left frame extension removal” on page 337.</b>
9	40X7716	2	1	Toner cartridge lock	N/A
10	40X7721	1	1	Torsion spring	N/A
11	40X7719	1	1	Torsion spring	N/A
12	40X7717	2	1	Toner cartridge clamp	N/A
13	40X7720	1	1	Torsion spring	N/A
14	40X7718	1	1	Torsion spring	N/A
15	40X8315	1	1	Left control panel hinge	See <b>“Left control panel hinge removal” on page 400.</b>
16	40X7724	2	1	Recoil spring	N/A
17	40X7575	1	1	Top option interface cable	N/A

# Assembly 8: Control panel



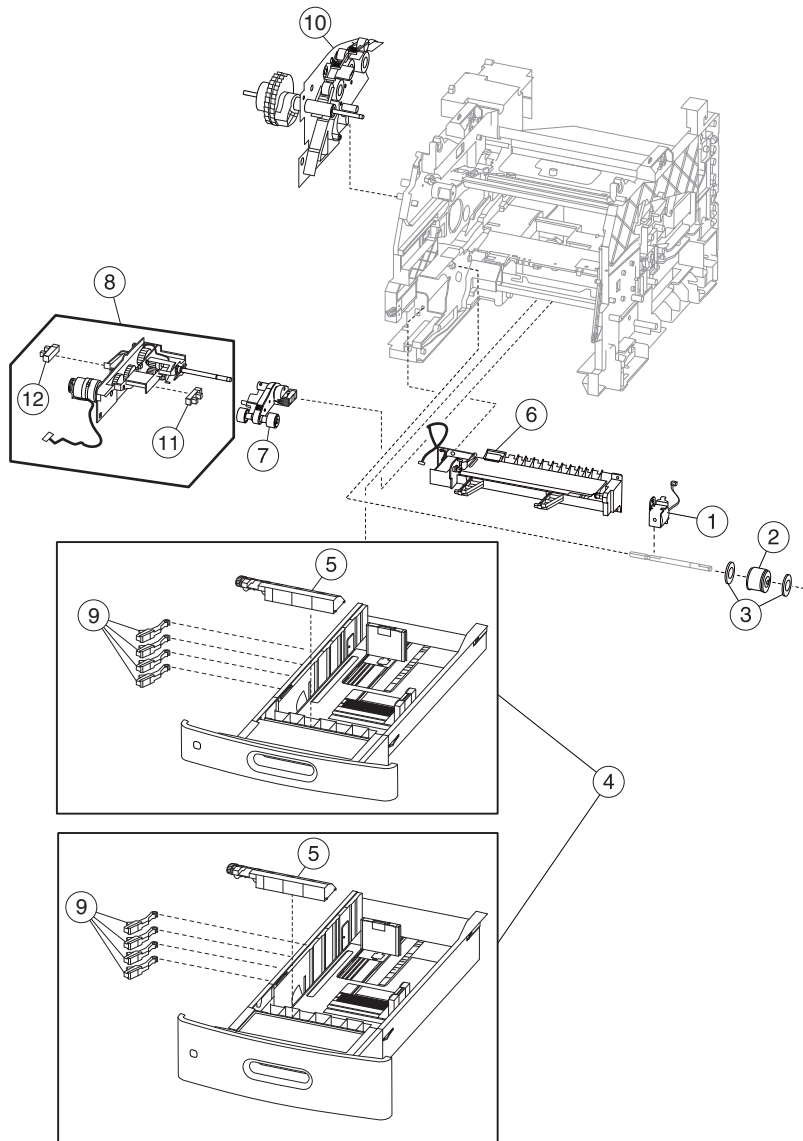
## Assembly 8: Control panel

Asm-index	P/N	Units/mach	Units/FRU	Description	Removal procedure
1	40X7700	1	1	2.4" LCD control panel	N/A
1	40X7701	1	1	4.3" touch screen control panel	See <b>"Control panel removal (4.3-inch screen, 7-inch screen)"</b> on page 381.
1	40X7875	1	1	7" touch screen control panel	See <b>"Control panel removal (4.3-inch screen, 7-inch screen)"</b> on page 381.
2	40X7737	1	1	Control panel board (2.4" display only)	See <b>"Control panel board (2.4-inch tilting display) removal"</b> on page 387.
3	40X7741	1	1	Control panel buttons (2.4" display only)	N/A
4	40X7735	1	1	Control panel board (4.3" tilting display only)	See <b>"Control panel board (4.3-inch tilting display) removal"</b> on page 390.
5	40X8042	1	1	Control panel board (7" tilting display only)	See <b>"Control panel board (4.3-inch tilting display) removal"</b> on page 390.
6	40X8537	1	1	4.3" tilting display	See <b>"4.3-inch tilting display removal"</b> on page 369.
7	40X8661	1	1	Control panel buttons (4.3" and 7" tilting displays only)	N/A
8	40X8538	1	1	7" tilting display	See <b>"7-inch tilting display removal"</b> on page 372.
9	40X7729	1	1	Control panel latch	See <b>"Control panel latch removal"</b> on page 398.
10	40X7731	1	1	Torsion spring	N/A
11	40X7681	1	1	Control panel front cover	See <b>"Control panel front cover removal"</b> on page 396.
12	40X7704	1	1	USB cable	N/A
13	40X7730	1	1	Torsion spring	N/A
14	40X7702	1	1	Speaker cable	N/A
15	40X9079	1	1	Control panel speaker	N/A
16	40X8583	1	1	Control panel left bezel (M5155)	See <b>"Control panel left bezel removal"</b> on page 399.

Asm-index	P/N	Units/mach	Units/FRU	Description	Removal procedure
16	40X8584	1	1	Control panel left bezel (M5163)	See <b>“Control panel left bezel removal” on page 399.</b>
16	40X8585	1	1	Control panel left bezel (M5170)	See <b>“Control panel left bezel removal” on page 399.</b>
16	40X8334	1	1	Control panel left bezel (MS810n)	See <b>“Control panel left bezel removal” on page 399.</b>
16	40X8335	1	1	Control panel left bezel (MS810dn)	See <b>“Control panel left bezel removal” on page 399.</b>
16	40X8336	1	1	Control panel left bezel (MS810de)	See <b>“Control panel left bezel removal” on page 399.</b>
16	40X8337	1	1	Control panel left bezel (MS811n)	See <b>“Control panel left bezel removal” on page 399.</b>
16	40X8338	1	1	Control panel left bezel (MS811dn)	See <b>“Control panel left bezel removal” on page 399.</b>
16	40X8339	1	1	Control panel left bezel (MS812dn)	See <b>“Control panel left bezel removal” on page 399.</b>
16	40X8340	1	1	Control panel left bezel (MS812de)	See <b>“Control panel left bezel removal” on page 399.</b>
16	40X8364	1	1	Control panel left USB delete cover	N/A
16	40X8362	1	1	Control panel left bezel (MS710)	See <b>“Control panel left bezel removal” on page 399.</b>
16	40X8363	1	1	Control panel left bezel (MS711)	See <b>“Control panel left bezel removal” on page 399.</b>
17	40X7705	1	1	Display to control panel board cable (4.3” tilting display only)	NA



# Assembly 9: Paper tray

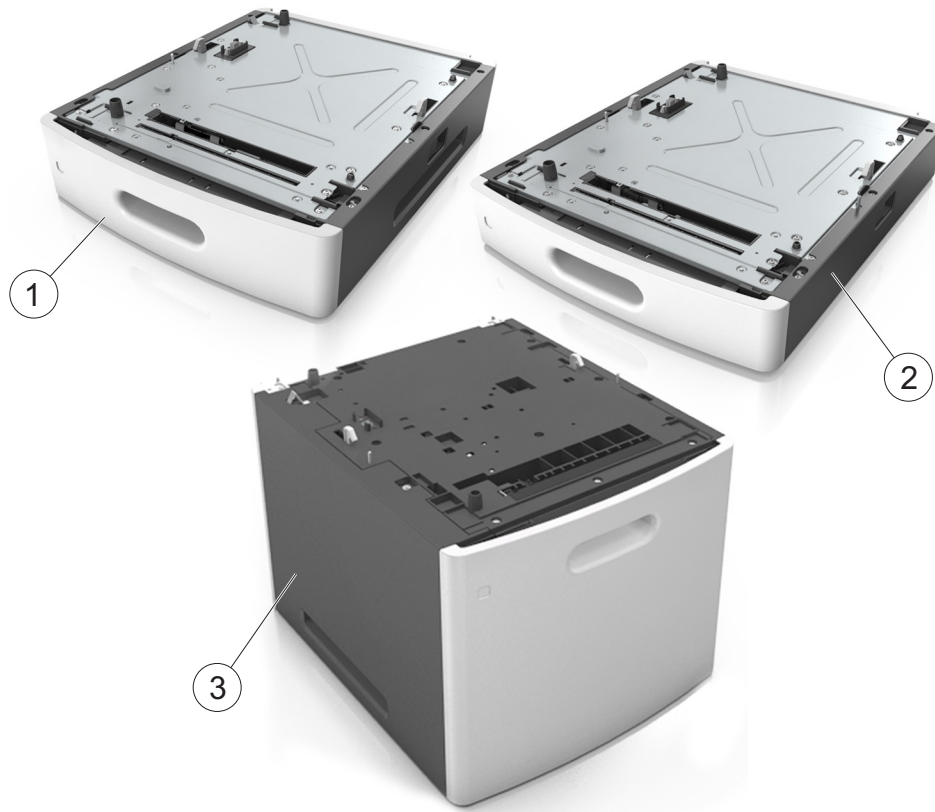




## Assembly 9: Paper tray

Asm-index	P/N	Units/mach	Units/FRU	Description	Removal procedure
1	40X7712	1	1	MPF feeder solenoid	N/A
2	40X7600	1	1	MPF pick roller	See <b>“MPF pick roller removal” on page 305.</b>
3	40X7601	2	1	MPF feed roller flange	N/A
4	40X7742	1	1	550-sheet tray	N/A
4	40X8153	1	1	250-sheet tray	N/A
5	40X7713	1	1	Separator roller assembly	See <b>“Separator roller assembly removal” on page 347.</b>
6	40X7598	1	1	MPF feeder lift plate with cable	See <b>“MPF feeder lift plate removal” on page 302.</b>
7	40X7593	1	1	Pick roller assembly	See <b>“Pick roller assembly removal” on page 342.</b>
8	40X7591	1	1	Media feeder	See <b>“Media feeder removal” on page 356.</b>
9	40X8541	4	1	Media size actuator	<b>“Media size actuator removal” on page 340</b>
10	40X7599	1	1	Media aligner roller with MPF pick roller	See <b>“Media aligner roller removal” on page 297.</b>
11	40X7592	1	1	Interrupt sensor <ul style="list-style-type: none"> <li>• Sensor (media empty)</li> </ul>	N/A
12	40X7592	1	1	Interrupt sensor <ul style="list-style-type: none"> <li>• Sensor (pick roller position)</li> </ul>	See <b>“Sensor (pick roller position) removal” on page 360.</b>

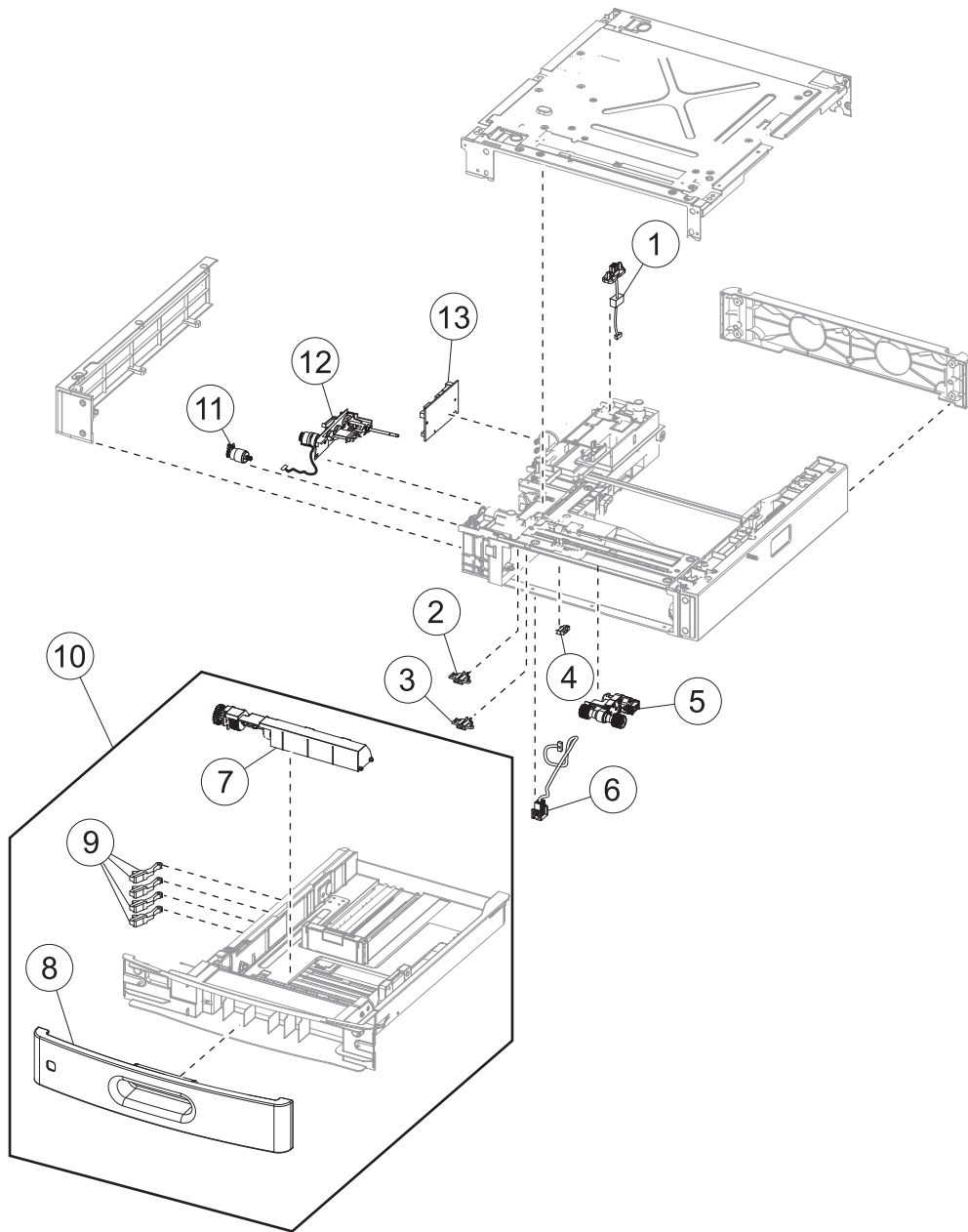
# Assembly 10: Input options



## Assembly 10: Input options

Asm-index	P/N	Units/mach	Units/FRU	Description	Removal procedure
1	40X8106	1	1	550-sheet tray option	<b>"250/550-sheet media tray and drawer assembly removal" on page 406</b>
1	40X8411	1	1	550-sheet tray option, lockable	<b>"250/550-sheet media tray and drawer assembly removal" on page 406</b>
2	40X8152	1	1	250-sheet tray option	<b>"250/550-sheet media tray and drawer assembly removal" on page 406</b>
2	40X8410	1	1	250-sheet tray option, lockable	<b>"250/550-sheet media tray and drawer assembly removal" on page 406</b>
3	40X8161	1	1	HCIT option	<b>"HCIT and drawer assembly removal" on page 422</b>
NS	40X8409	1	1	Spacer	N/A

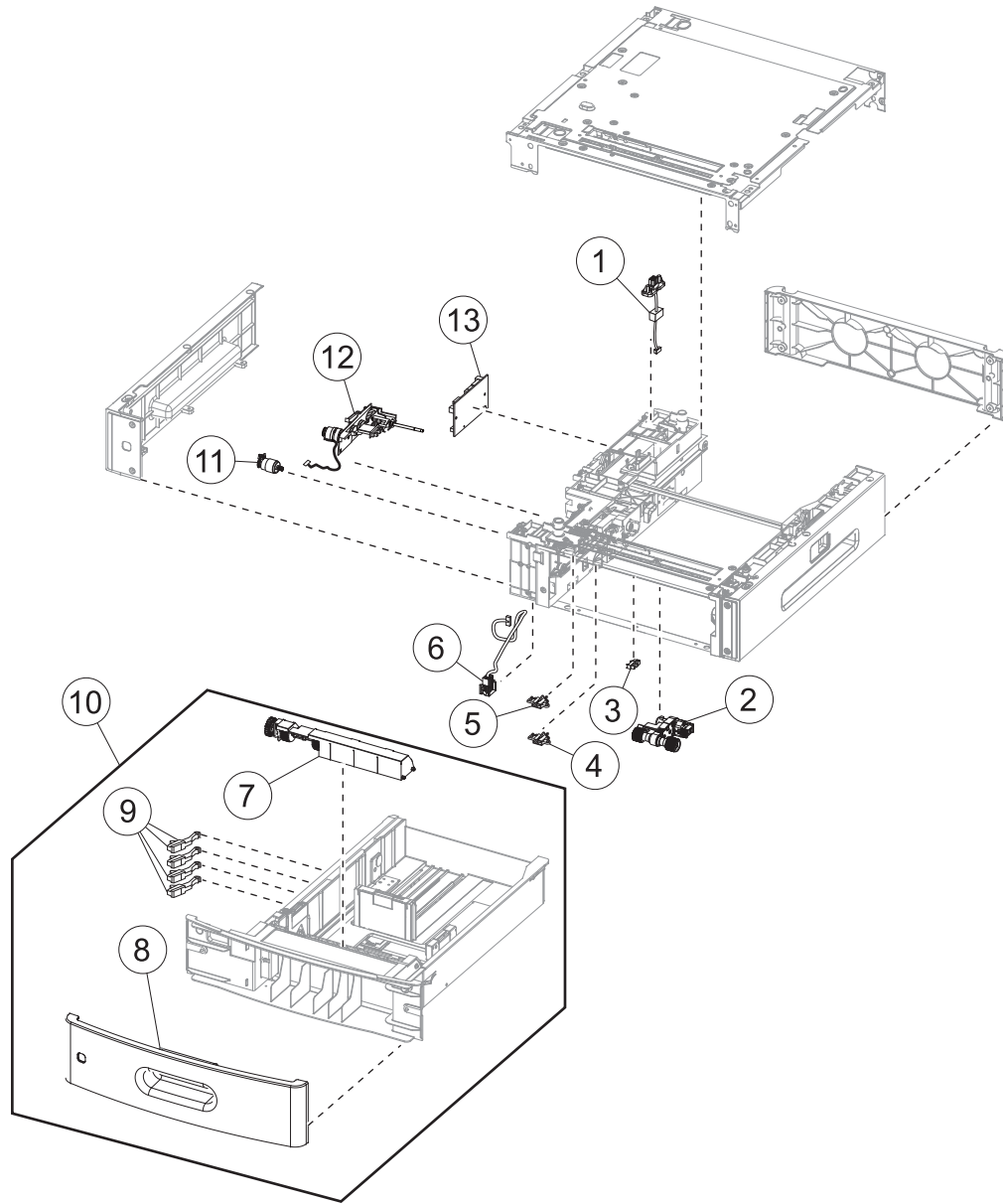
# Assembly 11: 250-sheet tray option



## Assembly 11: 250-sheet tray option

Asm-index	P/N	Units/mach	Units/FRU	Description	Removal procedure
1	40X8160	1	1	250-sheet tray option upper interface cable	<b>“Drawer upper interface cable removal” on page 412</b>
2	40X8156	1	1	Sensor (pass through)	<b>“Sensor (drawer pass through) removal” on page 417</b>
3	40X8158	1	1	Sensor (pick)	<b>“Sensor (pick) removal” on page 419</b>
4	40X7592	1	1	Sensor (pick roller position)	<b>“Sensor (pick roll position) removal” on page 408</b>
5	40X7593	1	1	Pick roller	<b>“Drawer pick roller removal” on page 408</b>
6	40X8159	1	1	250-sheet tray option lower interface cable	<b>“Drawer lower interface cable removal” on page 413</b>
7	40X7713	1	1	Separation roller	<b>“Media tray separation roller removal” on page 407</b>
8	40X8154	1	1	250-sheet tray front cover	<b>“Media tray front cover removal” on page 407</b>
9	40X8541	4	1	Media size actuator	<b>“Media size actuator removal” on page 340</b>
10	40X8153	1	1	250-sheet tray	<b>“Media tray assembly removal” on page 407</b>
11	40X8157	1	1	250-sheet tray option transport motor	<b>“Drawer transport motor removal” on page 416</b>
12	40X7591	1	1	Media feeder	<b>“Drawer media feeder removal” on page 414</b>
13	40X8672	1	1	250-sheet tray option controller PCBA	<b>“Drawer controller PCBA removal” on page 411</b>

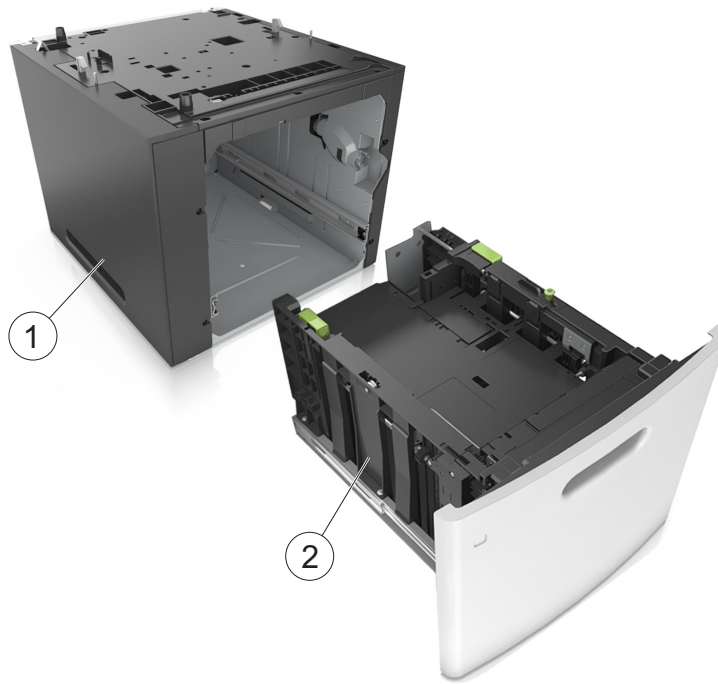
## Assembly 12: 550-sheet tray option



## Assembly 12: 550-sheet tray option

Asm-index	P/N	Units/mach	Units/FRU	Description	Removal procedure
1	40X8160	1	1	550-sheet tray option upper interface cable	<b>“Drawer upper interface cable removal” on page 412</b>
2	40X7593	1	1	Pick roller	<b>“Drawer pick roller removal ” on page 408</b>
3	40X7592	1	1	Sensor (pick roller position)	<b>“Sensor (pick roll position) removal ” on page 408</b>
4	40X8158	1	1	Sensor (pick)	<b>“Sensor (pick) removal” on page 419</b>
5	40X8156	1	1	Sensor (pass through)	<b>“Sensor (drawer pass through) removal ” on page 417</b>
6	40X8159	1	1	550-sheet tray option lower interface cable	<b>“Drawer lower interface cable removal” on page 413</b>
7	40X7713	1	1	Separation roller	<b>“Media tray separation roller removal” on page 407</b>
8	40X8109	1	1	550-sheet tray front cover	<b>“Media tray front cover removal” on page 407</b>
9	40X8541	4	1	Media size actuator	<b>“Media size actuator removal” on page 340</b>
10	40X7742	1	1	550-sheet tray	<b>“Media tray assembly removal” on page 407</b>
11	40X8157	1	1	550-sheet tray option transport motor	<b>“Drawer transport motor removal” on page 416</b>
12	40X7591	1	1	Media feeder	<b>“Drawer media feeder removal ” on page 414</b>
13	40X8155	1	1	550-sheet tray option controller PCBA	<b>“Drawer controller PCBA removal” on page 411</b>

## Assembly 13: High capacity input tray option 1

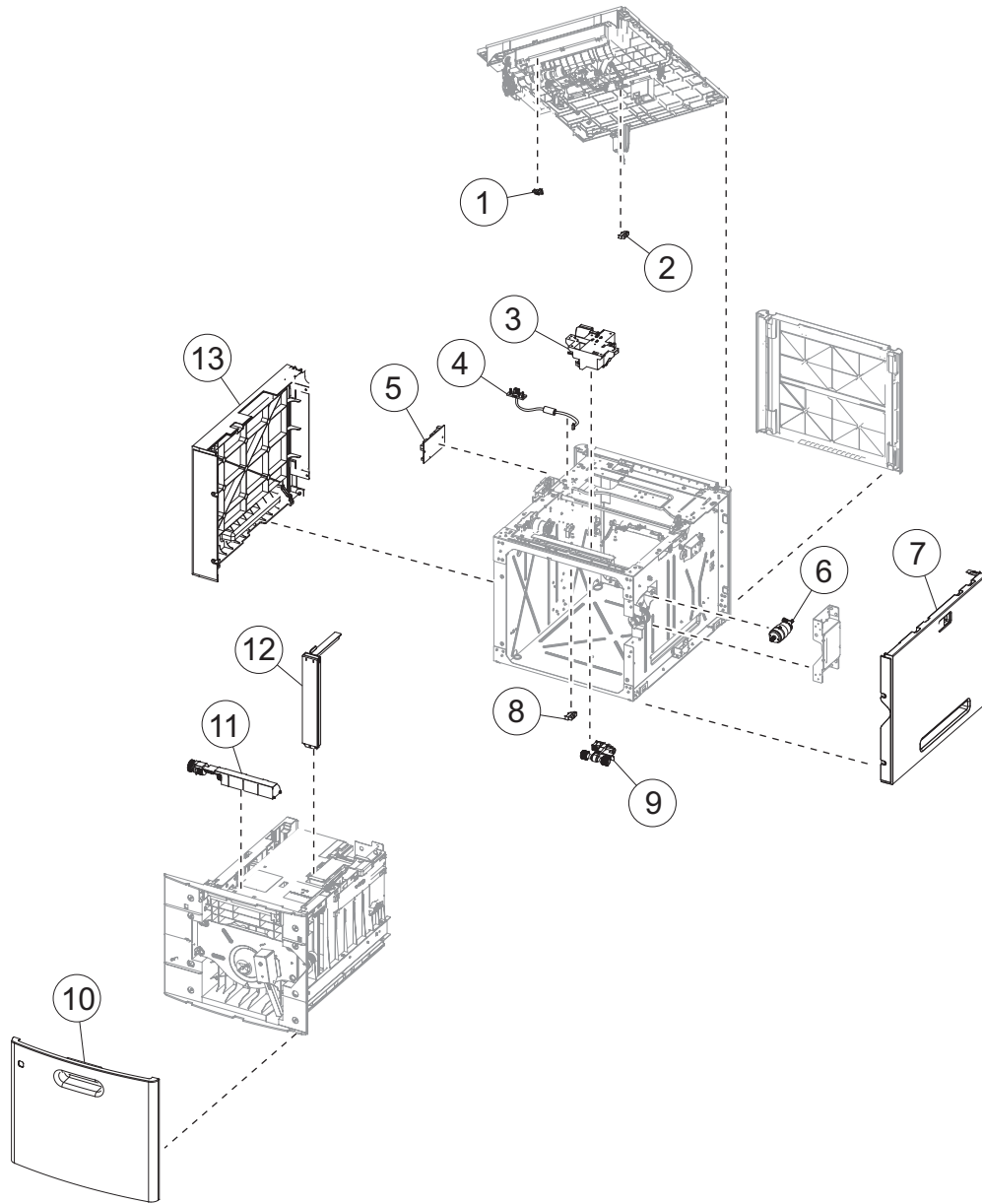




## Assembly 13: High capacity input tray option 1

Asm-index	P/N	Units/mach	Units/FRU	Description	Removal procedure
1	40X8163	1	1	HCIT drawer assembly	See <b>"HCIT drawer assembly removal" on page 423</b>
2	40X8165	1	1	HCIT	See <b>"HCIT removal" on page 423</b>

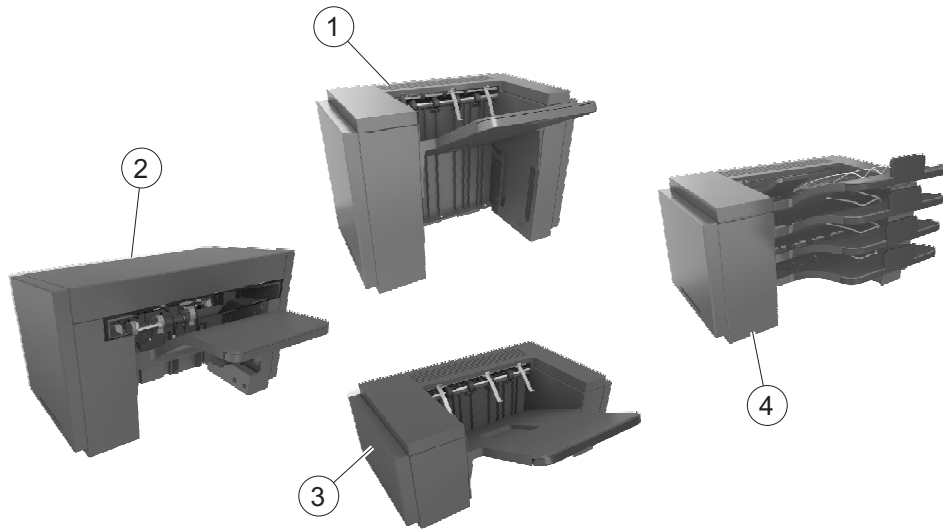
## Assembly 14: High capacity input tray option 2



## Assembly 14: High capacity input tray option 2

Asm-index	P/N	Units/mach	Units/FRU	Description	Removal procedure
1	40X8178	1	1	Sensor (HCIT pick) with cable	See <b>“Sensor (HCIT pick) removal” on page 442</b>
2	40X8177	1	1	Sensor (HCIT media low) with flag	See <b>“Sensor (HCIT media low) with flag removal” on page 439</b>
3	40X8174	1	1	HCIT option media feeder	See <b>“HCIT media feeder removal” on page 443</b>
4	40X8180	1	1	HCIT option interface cable	See <b>“HCIT drawer assembly interface cable removal” on page 438</b>
5	40X8173	1	1	HCIT option controller PCBA	See <b>“HCIT controller PCBA removal” on page 433</b>
6	40X8179	1	1	HCIT option lift drive motor	See <b>“HCIT lift drive motor removal” on page 436</b>
7	40X8169	1	1	HCIT option right cover	See <b>“HCIT drawer assembly right cover removal” on page 431</b>
8	40X7592	1	1	Sensor (HCIT pick roller position)	See <b>“Sensor (pick roll position) removal” on page 440</b>
9	40X7593	1	1	Pick roller	See <b>“HCIT pick arm assembly removal” on page 427</b>
10	40X8171	1	1	HCIT front cover	See <b>“HCIT front cover removal” on page 425</b>
11	40X7713	1	1	Separation roller	See <b>“HCIT separator roll assembly removal” on page 424</b>
12	40X8176	1	1	HCIT media guide	See <b>“HCIT media guide removal” on page 424</b>
13	40X8167	1	1	HCIT option left cover	See <b>“HCIT drawer assembly left cover removal” on page 429</b>

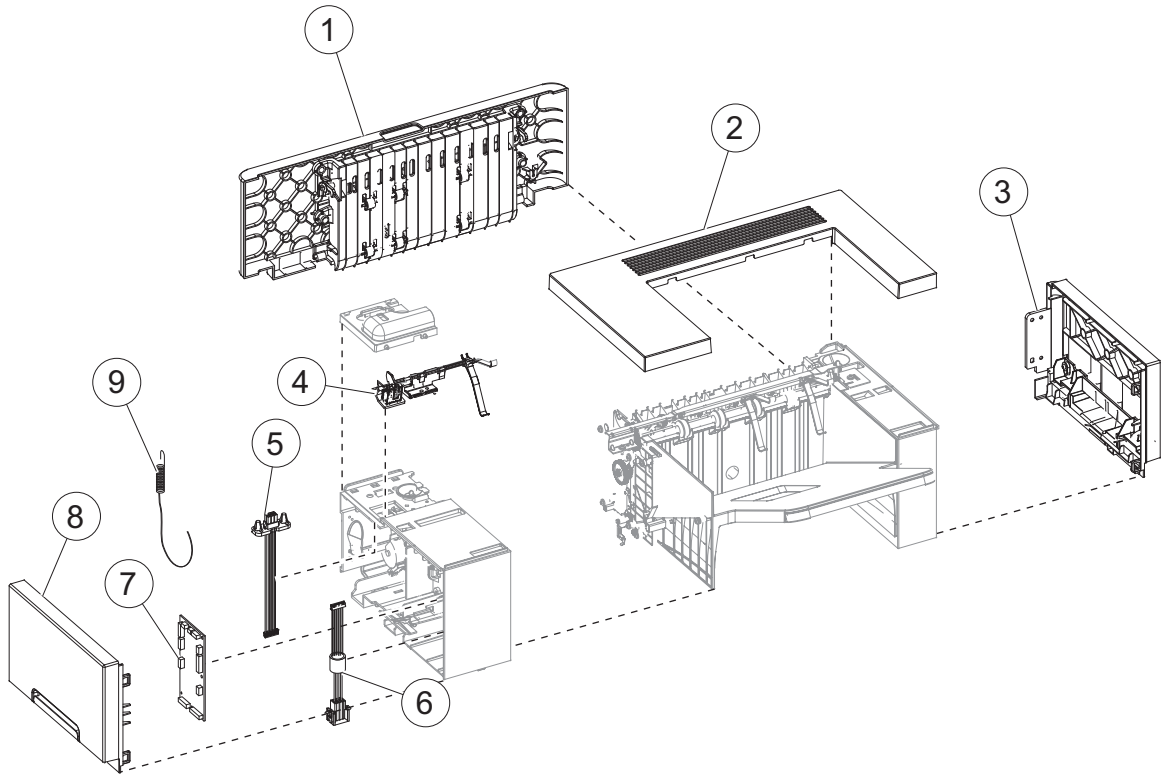
# Assembly 15: Output options



## Assembly 15: Output options

Asm-index	P/N	Units/mach	Units/FRU	Description	Removal procedure
1	40X8195	1	1	High capacity output expander option	<b>“High capacity output expander assembly removal” on page 460</b>
2	40X8207	1	1	Staple finisher option	<b>“Staple finisher assembly removal” on page 471</b>
3	40X8184	1	1	Output expander option	<b>“Output expander assembly removal” on page 446</b>
4	40X8241	1	1	Mailbox option	<b>“Mailbox assembly removal” on page 500</b>

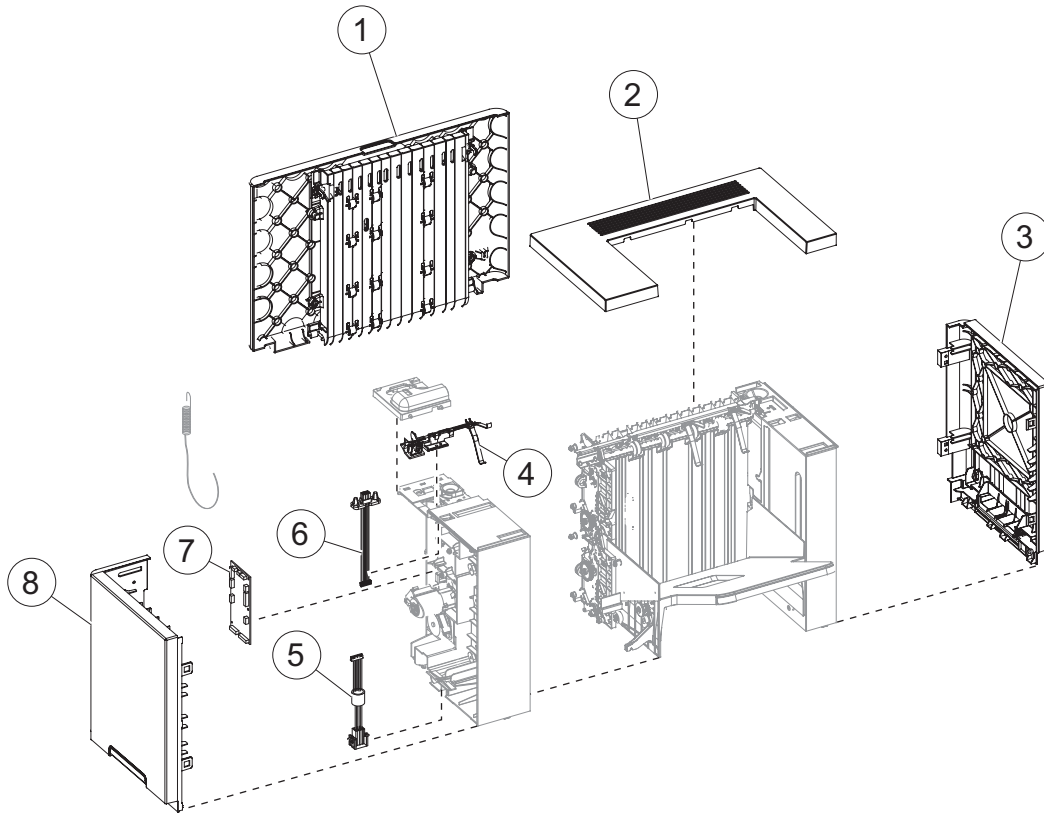
## Assembly 16: Output expander option



## Assembly 16: Output expander option

Asm-index	P/N	Units/mach	Units/FRU	Description	Removal procedure
1	40X8186	1	1	Output expander rear door	<b>"Output expander rear door removal" on page 447</b>
2	40X8196	1	1	Output expander top cover	<b>"Output expander top cover removal" on page 446</b>
3	40X8187	1	1	Output expander right cover	<b>"Output expander right cover removal" on page 450</b>
4	40X8191	1	1	Sensor (media bin full) with flag	<b>"Sensor (media bin full) with flag removal" on page 449</b>
5	40X8206	1	1	Upper interface cable	<b>"Upper interface cable removal" on page 456</b>
6	40X8205	1	1	Lower interface cable	<b>"Lower interface cable removal" on page 455</b>
7	40X8199	1	1	Output expander controller PCBA	<b>"Output expander controller PCBA removal" on page 454</b>
8	40X8190	1	1	Output expander left cover	<b>"Output expander left cover removal" on page 452</b>
9	40X8192	1	1	Spring with string	<b>"Spring with string removal" on page 458</b>
NS	40X8500	1	1	Actuator flag (media bin full)	N/A

## Assembly 17: High capacity output expander option

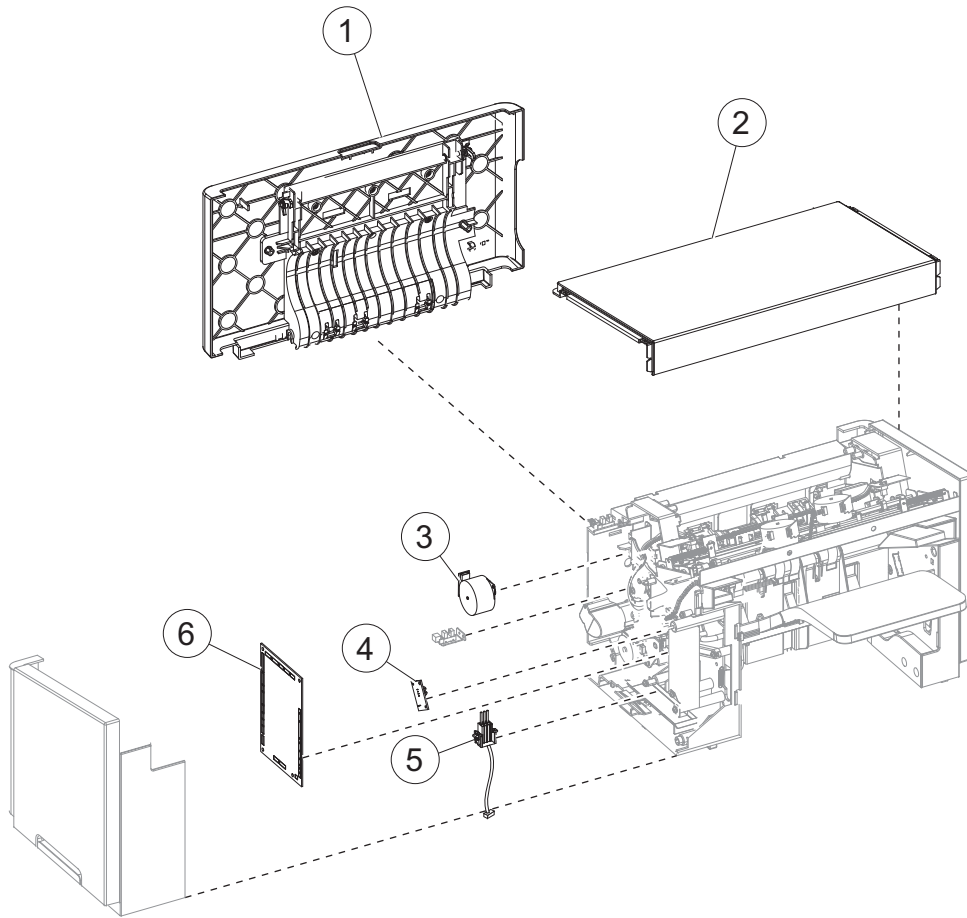




## Assembly 17: High capacity output expander option

Asm-index	P/N	Units/mach	Units/FRU	Description	Removal procedure
1	40X8197	1	1	HCOE rear door	<b>"HCOE rear door removal" on page 461</b>
2	40X8196	1	1	HCOE top cover	<b>"HCOE top cover removal" on page 460</b>
3	40X8198	1	1	HCOE right cover	<b>"HCOE right outer cover removal" on page 463</b>
4	40X8191	1	1	Sensor (HCOE media bin full) with flag	<b>"Sensor (HCOE media bin full) with flag removal" on page 463</b>
5	40X8205	1	1	HCOE lower interface cable	<b>"HCOE lower interface cable removal" on page 469</b>
6	40X8206	1	1	HCOE upper interface cable	<b>"HCOE upper interface cable removal" on page 470</b>
7	40X8199	1	1	HCOE controller PCBA	<b>"HCOE controller PCBA removal" on page 467</b>
8	40X8202	1	1	HCOE left cover	<b>"HCOE left cover removal" on page 465</b>
NS	40X8500	1	1	Actuator flag (media bin full)	N/A

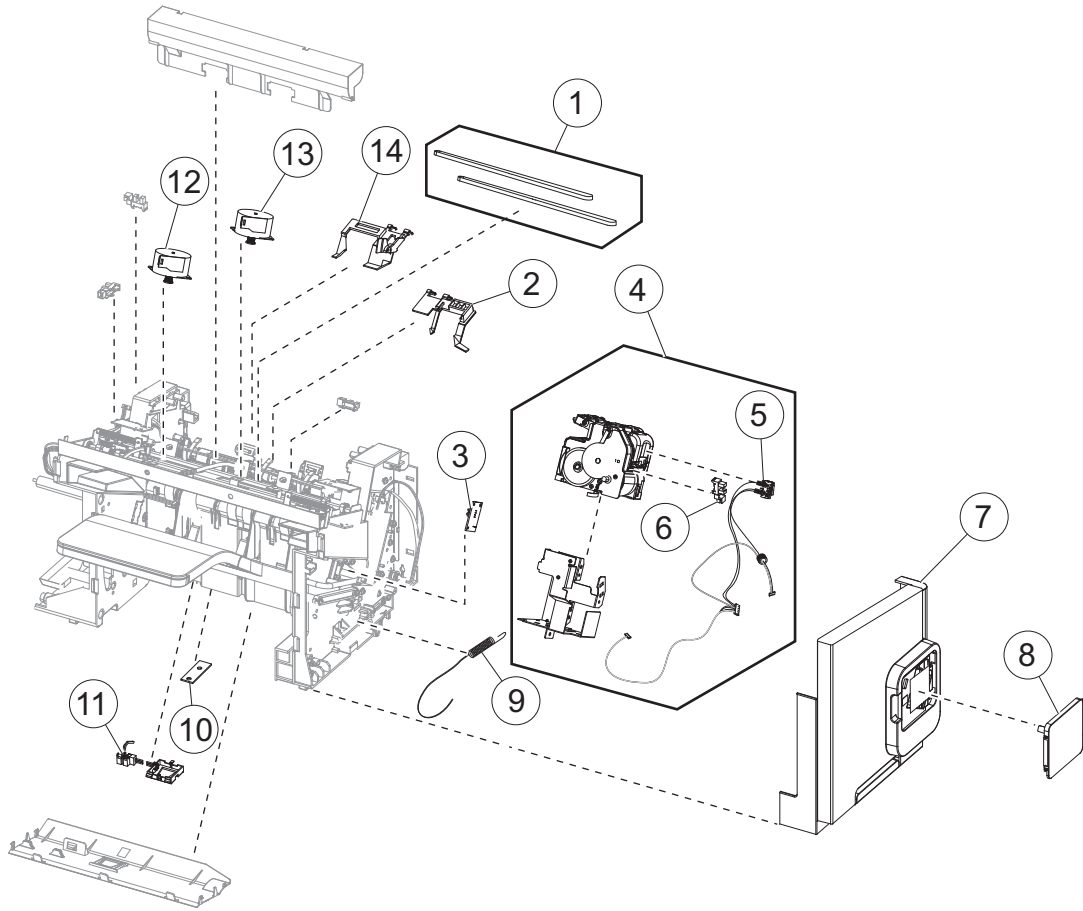
## Assembly 18: Staple finisher option 1



## Assembly 18: Staple finisher option 1

Asm-index	P/N	Units/mach	Units/FRU	Description	Removal procedure
1	40X8214	1	1	Stapler rear door	See <b>“Stapler rear door removal” on page 472</b>
2	40X8222	1	1	Stapler top cover	See <b>“Stapler top cover removal” on page 482</b>
3	40X8213	1	1	Stapler paddle drive motor	See <b>“Paddle drive motor removal” on page 493</b>
4	40X8220	1	1	Sensor (bin full receive)	See <b>“Sensor (bin full receive) removal” on page 498</b>
5	40X8224	1	1	Stapler lower interface cable	See <b>“Stapler lower interface cable removal” on page 494</b>
6	40X8221	1	1	Stapler controller PCBA	See <b>“Stapler controller PCBA removal” on page 496</b>

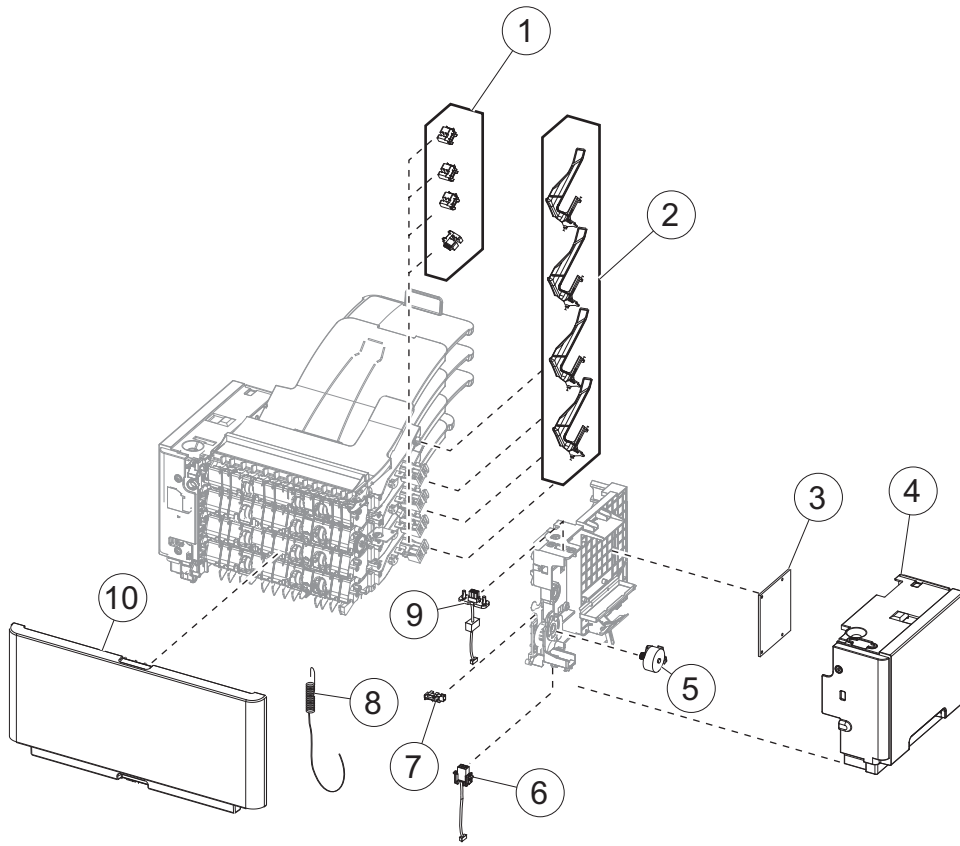
## Assembly 19: Staple finisher option 2



## Assembly 19: Staple finisher option 2

Asm-index	P/N	Units/mach	Units/FRU	Description	Removal procedure
1	40X8212	1	1	Tamper drive belt	<b>"Tamper drive belt removal" on page 492</b>
2	40X8209	1	1	Media stack flap (right)	<b>"Media stack flap (right) removal" on page 485</b>
3	40X8217	1	1	Sensor (bin full send)	<b>"Sensor (bin full send) removal" on page 497</b>
4	40X8223	1	1	Stapler carriage assembly	<b>"Stapler carriage assembly removal" on page 479</b>
5	40X8225	1	1	Stapler door close limit switch	<b>"Stapler door close limit switch removal" on page 476</b>
6	40X7592	1	1	Sensor (cartridge door interlock)	<b>"Sensor (cartridge door interlock) removal" on page 476</b>
7	40X8216	1	1	Stapler right cover	<b>"Stapler right cover removal" on page 474</b>
8	40X8215	1	1	Stapler cartridge access door	<b>"Stapler cartridge access door removal" on page 482</b>
9	40X8226	1	1	Stapler spring with string	<b>"Stapler spring with string removal" on page 484</b>
10	40X8218	1	1	Standard output bin LED	<b>"Standard output bin LED removal" on page 489</b>
11	40X8219	1	1	Sensor (finisher bin media present)	<b>"Sensor (finisher bin media present) removal" on page 490</b>
12	40X8211	1	1	Tamper motor (left)	<b>"Tamper motor (left) removal" on page 491</b>
13	40X8211	1	1	Tamper motor (right)	<b>"Tamper motor (right) removal" on page 491</b>
14	40X8210	1	1	Media stack flap (left)	<b>"Media stack flap (left) removal" on page 486</b>

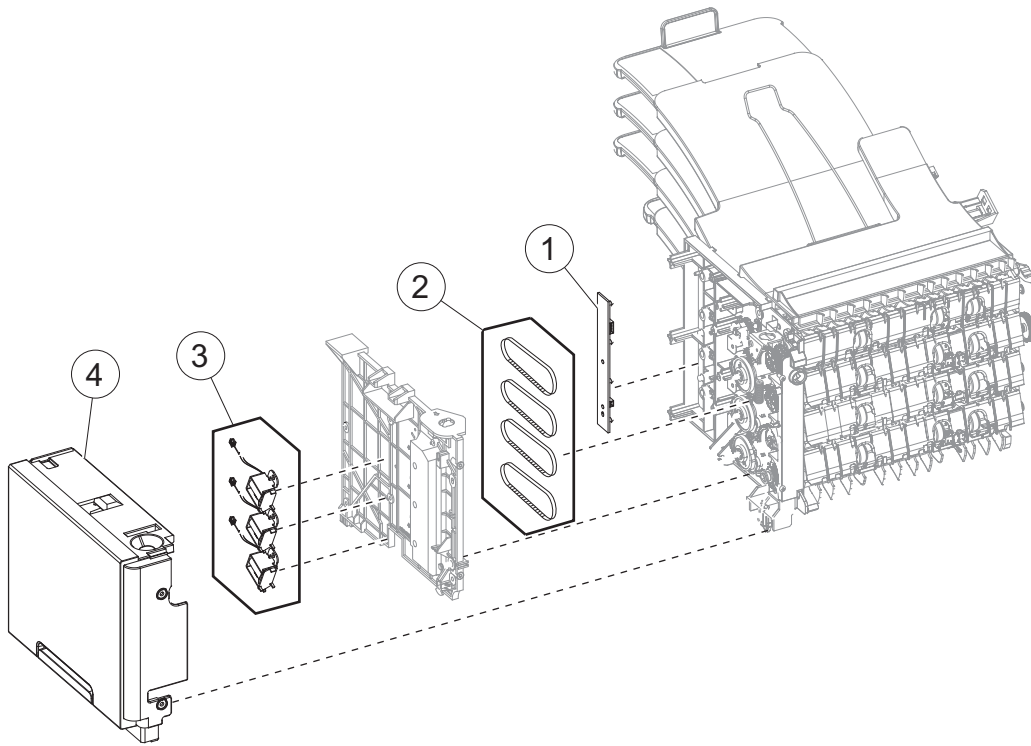
# Assembly 20: Mailbox option 1



## Assembly 20: Mailbox option 1

Asm-index	P/N	Units/mach	Units/FRU	Description	Removal procedure
1	40X8248	4	4	Sensor (bin full receive)	<b>“Sensor (mailbox bin full receive) removal” on page 515</b>
2	40X8247	4	4	Mailbox media bin full flag	<b>“Mailbox media bin full flag removal” on page 514</b>
3	40X8244	1	1	Mailbox controller PCBA	<b>“Mailbox controller PCBA removal” on page 507</b>
4	40X8246	1	1	Mailbox left cover	<b>“Mailbox left cover removal” on page 506</b>
5	40X8256	1	1	Mailbox divert motor	<b>“Mailbox divert motor removal” on page 512</b>
6	40X8253	1	1	Mailbox lower interface cable	<b>“Mailbox lower interface cable removal” on page 510</b>
7	40X7592	1	1	Mailbox sensor (divert motor)	<b>“Sensor (mailbox divert motor) removal” on page 509</b>
8	40X8252	1	1	Mailbox spring with string	<b>“Mailbox spring with string removal” on page 503</b>
9	40X8254	1	1	Mailbox upper interface cable	<b>“Mailbox upper interface cable removal” on page 512</b>
10	40X8242	1	1	Mailbox rear door	<b>“Mailbox rear door removal” on page 500</b>

## Assembly 21: Mailbox option 2





## Assembly 21: Mailbox option 2

Asm-index	P/N	Units/mach	Units/FRU	Description	Removal procedure
1	40X8250	1	1	Mailbox output bin LED assembly	See <b>“Mailbox output bin LED assembly removal” on page 520</b>
2	40X8249	4	1	Mailbox belt	See <b>“Mailbox belt removal” on page 518</b>
3	40X8251	3	1	Mailbox solenoid	See <b>“Mailbox solenoid removal” on page 504</b>
4	40X8243	1	1	Mailbox right cover	See <b>“Mailbox right cover removal” on page 502</b>

## Assembly 22: Miscellaneous

Asm-index	P/N	Units/mach	Units/FRU	Description	Removal procedure
NS	40X4819	1	1	RS232C serial adapter	N/A
NS	40X5315	1	1	SHIP-WITH ISP (2PER) screw	N/A
NS	40X5316	1	1	14 PIN JST-FOR ISP cable	N/A
NS	40X5317	1	1	Tee with thumbscrew standoff	N/A
NS	40X4826	1	1	N8120 GIGABIT INA adapter	N/A
NS	40X5315	1	1	SHIP-WITH ISP (2PER) screw	N/A
NS	40X5316	1	1	14 PIN JST-FOR ISP cable	N/A
NS	40X5317	1	1	Tee with thumbscrew standoff	N/A
NS	40X4823	1	1	Parallel 1284-B THCK adapter	N/A
NS	40X5315	1	1	SHIP-WITH ISP (2PER) screw	N/A
NS	40X5316	1	1	14 PIN JST-FOR ISP cable	N/A
NS	40X5317	1	1	Tee with thumbscrew standoff	N/A
NS	40X4827	1	1	N8130 10/100 fiber adapter	N/A
NS	40X5315	1	1	SHIP-WITH ISP (2PER) screw	N/A
NS	40X5316	1	1	14 PIN JST-FOR ISP cable	N/A
NS	40X5317	1	1	Tee with thumbscrew standoff	N/A
NS	40X6522	1	1	DDR3-512Mx16 1GB-400MHZ RAM card	N/A
NS	40X7445	1	1	DDR3-512Mx32 2GB RAM card	N/A
NS	40X7566	1	1	DDR3-256Mx16 512MB-400MHZ RAM card	N/A
NS	40X7567	1	1	DDR3-256Mx32 1GB-400MHZ RAM card	N/A
NS	40X8555	1	1	256MB user flash card	N/A
NS	40X8556	1	1	Traditional Chinese font card	N/A
NS	40X8557	1	1	Simplified Chinese font card	N/A
NS	40X8568	1	1	Korean font card	N/A
NS	40X8569	1	1	Japanese font card	N/A
NS	40X8594	1	1	MS810/1/2 forms and barcode card	N/A
NS	40X8597	1	1	MS810de forms and barcode card	N/A
NS	40X8600	1	1	MS812de forms and barcode card	N/A
NS	40X8596	1	1	MS81xn prescribe card	N/A
NS	40X8599	1	1	MS810de prescribe card	N/A
NS	40X8602	1	1	MS812de prescribe card	N/A
NS	40X8595	1	1	MS81xn IPDS card	N/A

Asm-index	P/N	Units/mach	Units/FRU	Description	Removal procedure
NS	40X8598	1	1	MS810de IPDS card	N/A
NS	40X8601	1	1	MS812de IPDS card	N/A
NS	40X0387	1	1	USB-A interface device	N/A
NS	40X1593	1	1	Lexmark MarkNet N7000e (1 port USB) Ethernet 10Base/100BaseTX	N/A
NS	40X1594	1	1	Lexmark MarkNet N7002e (1 port Parallel) Ethernet 10BaseT/100BaseTX	N/A
NS	40X1592	1	1	Lexmark MarkNet N7020e (4 port USB) Ethernet 10BaseT/100BaseTX/1000BaseT	N/A
NS	40X7706	1	1	MS71x & MS81x Roller Kit	N/A
NS	40X8420	1	1	MS81x Return Program Fuser Maint. Kit Type 00, 110-120V Letter	N/A
NS	40X8421	1	1	MS81x Return Program Fuser Maint. Kit Type 01, 220-240V A5	N/A
NS	40X8422	1	1	MS81x Return Program Fuser Maint. Kit Type 02, 100V A5	N/A
NS	40X8423	1	1	MS81x Return Program Fuser Maint. Kit Type 03, 110-120V A5	N/A
NS	40X8424	1	1	MS81x Return Program Fuser Maint. Kit Type 04, 220-240V Letter	N/A
NS	40X8425	1	1	MS81x Fuser Maint. Kit Type 05, 110-120V Letter	N/A
NS	40X8426	1	1	MS81x Fuser Maint. Kit Type 06, 220-240V A4	N/A
NS	40X8427	1	1	MS81x Fuser Maint. Kit Type 07, 100V A4	N/A
NS	40X8428	1	1	MS81x Fuser Maint. Kit Type 08, 110-120V A4	N/A
NS	40X8429	1	1	MS81x Fuser Maint. Kit Type 09, 220-240V Letter	N/A
NS	40X8530	1	1	MS71x Return Program Fuser Maint. Kit Type 11, 110-120V	N/A
NS	40X8531	1	1	MS71x Return Program Fuser Maint. Kit Type 13, 220-240V	N/A
NS	40X8532	1	1	MS71x Return Program Fuser Maint. Kit Type 15, 100V	N/A
NS	40X8533	1	1	MS71x Fuser Maint. Kit Type 17, 110-120V	N/A
NS	40X8534	1	1	MS71x Fuser Maint. Kit Type 19, 220-240V	N/A
NS	40X8535	1	1	MS71x Fuser Maint. Kit Type 21, 100V	N/A
NS	40X8093	1	1	MS7xx, MS8xx, MX7xx caster base	N/A
NS	40X8359	1	1	Locking caster	N/A
NS	40X8579	1	1	Oil Wiper (MS7xx only)	N/A
NS	40X8581	1	1	Wax Wiper (MS7xx only)	N/A
NS	40X7854	1	1	Fax adapter	N/A
NS	40X7857	1	1	Hard disk drive	N/A

Asm-index	P/N	Units/mach	Units/FRU	Description	Removal procedure
NS	40X7858	1	1	Network adapter 802.11 US	N/A
NS	40X8311	1	1	Case card reader—small stick-on	N/A
NS	40X8312	1	1	Case card reader—large stick-on	N/A
NS	40X8313	1	1	Case card reader—small snap-on	N/A



## Assembly 23: Power cords

Asm-index	P/N	Units/mach	Units/FRU	Description	Removal procedure
NS	40X0269	1	1	Power cord LV, USA & Canada, Latin America	N/A
NS	40X0288	1	1	Power cord HV, Argentina	N/A
NS	40X1766	1	1	Power cord HV, Bolivia & Peru	N/A
NS	40X0273	1	1	Power cord HV, Chile, Uruguay	N/A
NS	40X3141	1	1	Power cord HV, Paraguay, Austria, Belgium, France, Germany, Italy, Netherlands, Bluemark, Czech & Solvic countries, Greece, Hungary, Medmark 1, Medmark 2, Arabic, Poland, Russia, CIS, Spain, Portugal, & Ireland	N/A
NS	40X4596	1	1	Power cord LV, Brazil PPB kits	N/A
NS	40X0271	1	1	Power cord HV, United Kingdom, Asian, Brunei, Cambodia, Indonesia, Laos, Malaysia, Myanmar, Philippines, Singapore, Thailand, Vietnam, Afghanistan, Bangladesh, Bhutan, India, Nepal, Pakistan, Sri Lanka, Tibet, & Hong Kong	N/A
NS	40X0301	1	1	Power cord HV, Australia & New Zealand	N/A
NS	40X3609	1	1	Power cord 100 V, Japan	N/A
NS	40X1792	1	1	Power cord, HV, Korea	N/A
NS	40X0303	1	1	Power cord, HV PRC	N/A
NS	40X1791	1	1	Power cord LV, Taiwan	N/A
NS	40X1774	1	1	Power cord HV, Denmark, Finland, Norway, Sweden	N/A
NS	40X0275	1	1	Power cord, HV, Israel	N/A
NS	40X1773	1	1	Power cord HV, South Africa, Namibia, Lesotho, Botswana & Pakistan	N/A
NS	40X1772	1	1	Power cord HV, Switzerland	N/A