

Parts catalog

Legend

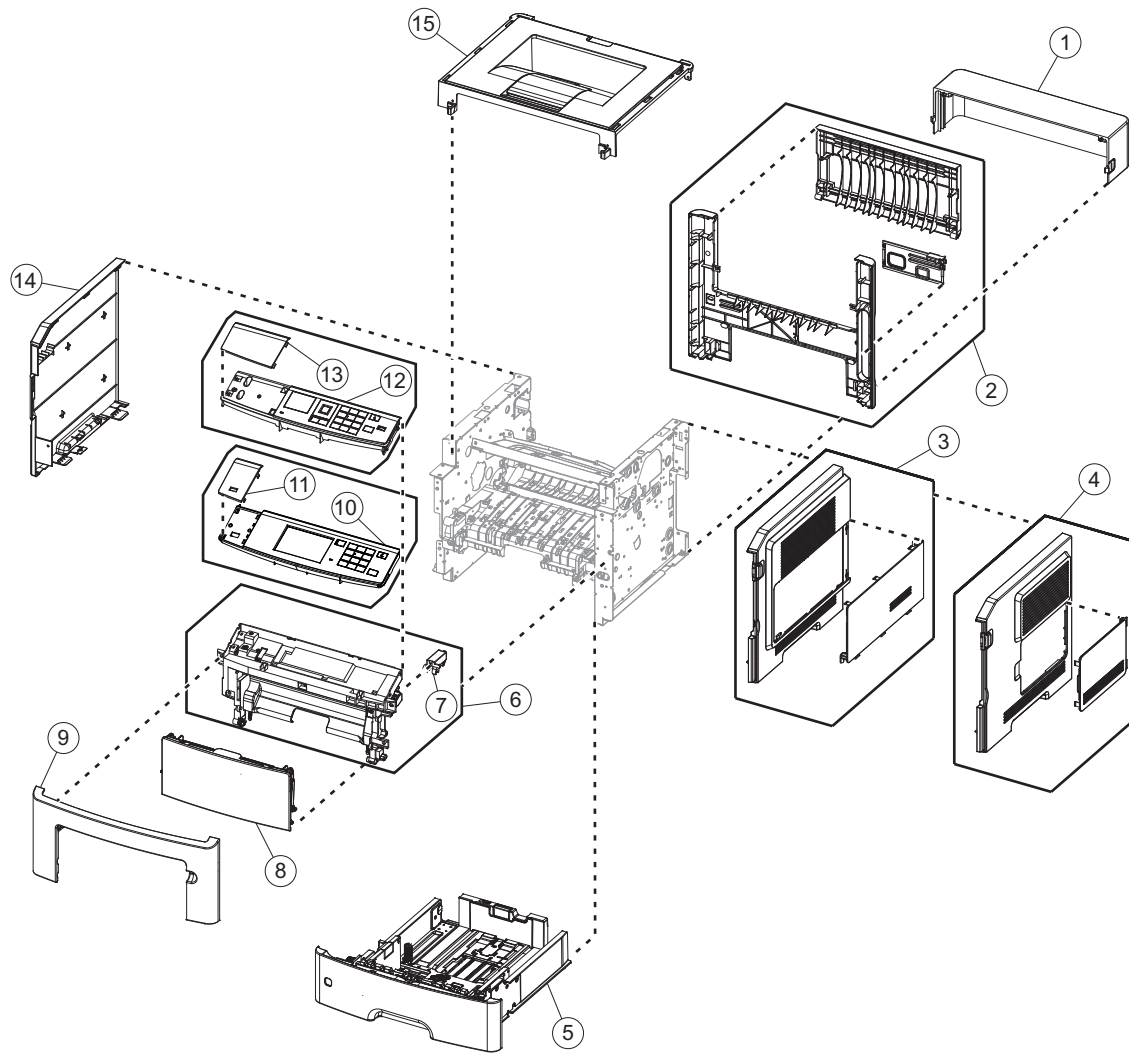
The following column headings are used in the parts catalog:

- **Asm-index**—Identifies the item in the illustration.
- **Part number**—Identifies the unique number that correlates with the part.
- **Units/mach**—Refers to the number of units actually used in the base machine or product.
- **Units/FRU**—Refers to the number of units in a particular FRU.
- **Description**—A brief description of the part.

The following abbreviations are used in the parts catalog:

- **NS** (not shown) in the Asm-index column indicates that the part is procurable but is not pictured in the illustration.
- **PP** (parts packet) in the Description column indicates that the part is contained in a parts packet.

Assembly 1: Covers

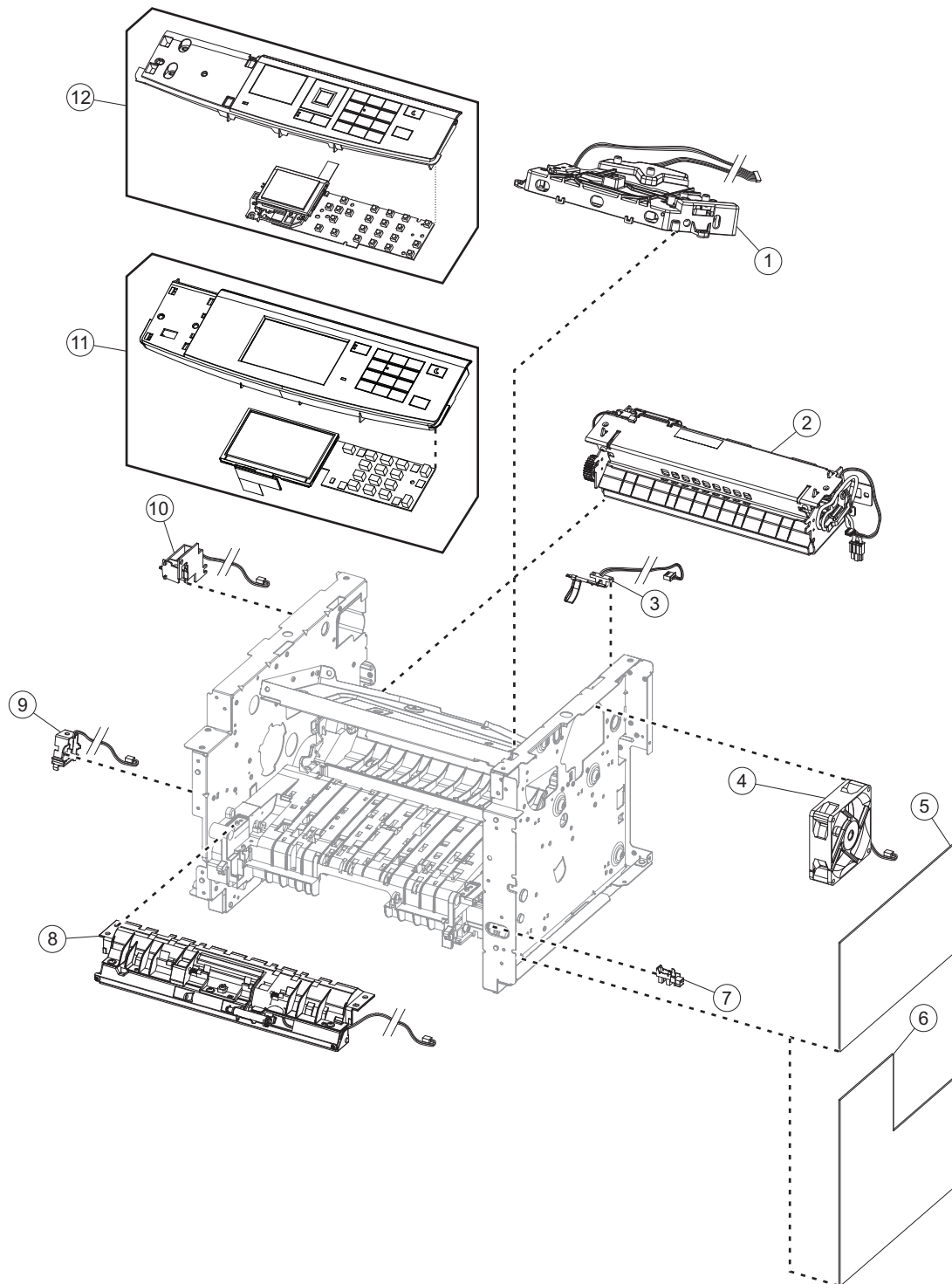


Assembly 1: Covers

Asm-index	P/N	Units/mach	Units/FRU	Description	Removal procedure
1	40X8520	1	1	Dust cover (250-sheet tray)	“Dust cover removal” on page 240
1	40X8521	1	1	Dust cover (550-sheet tray)	“Dust cover removal” on page 240
2	40X8054	1	1	Rear door and cover (MS510dn)	“Rear door and cover removal” on page 240
2	40X8270	1	1	Rear door and cover (MS610dn, MS610de)	“Rear door and cover removal” on page 240
3	40X8087	1	1	Right cover (MS610dn, MS610de)	“Right cover removal” on page 178
4	40X8052	1	1	Right cover (MS510dn)	“Right cover removal” on page 178
5	40X8305	1	1	250-sheet tray	N/A
5	40X8086	1	1	550-sheet tray	N/A
6	40X8056	1	1	Front access cover (MS510dn, MS610dn)	“Front access cover removal” on page 218
6	40X8268	1	1	Front access cover (MS610de)	“Front access cover removal” on page 218
7	40X9148	1	1	Cartridge plunger	“Cartridge plunger removal” on page 194
8	40X9131	1	1	MPF assembly (100 sheets)	“MPF assembly removal” on page 210
9	40X8051	1	1	Nameplate (MS510dn, MS610dn)	“Nameplate removals” on page 199
9	40X8272	1	1	Nameplate (MS610de)	“Nameplate removals” on page 199
10	40X8057	1	1	Control panel cover and buttons (MS610de) Note: Does not include the UICC.	“Control panel assembly removals” on page 201 “UICC removals” on page 205
11	40X8068	1	1	Bezel (MS610de)	“Bezel removals” on page 197
12	40X8060	1	1	Control panel cover and buttons (MS510dn) Note: Does not include the UICC.	“Control panel assembly removals” on page 201 “UICC removals” on page 205

Asm-index	P/N	Units/mach	Units/FRU	Description	Removal procedure
12	40X8061	1	1	Control panel cover and buttons (MS610dn) Note: Does not include the UICC.	“Control panel assembly removals” on page 201 “UICC removals” on page 205
13	40X8066	1	1	Bezel (MS510dn)	“Bezel removals” on page 197
13	40X8067	1	1	Bezel (MS610dn)	“Bezel removals” on page 197
14	40X8053	1	1	Left cover (MS510dn)	“Left cover removal” on page 166
14	40X8269	1	1	Left cover (MS610dn, MS610de)	“Left cover removal” on page 166
15	40X8055	1	1	Top cover (MS510dn)	“Top cover removal” on page 245
15	40X8271	1	1	Top cover (MS610dn, MS610de)	“Top cover removal” on page 245

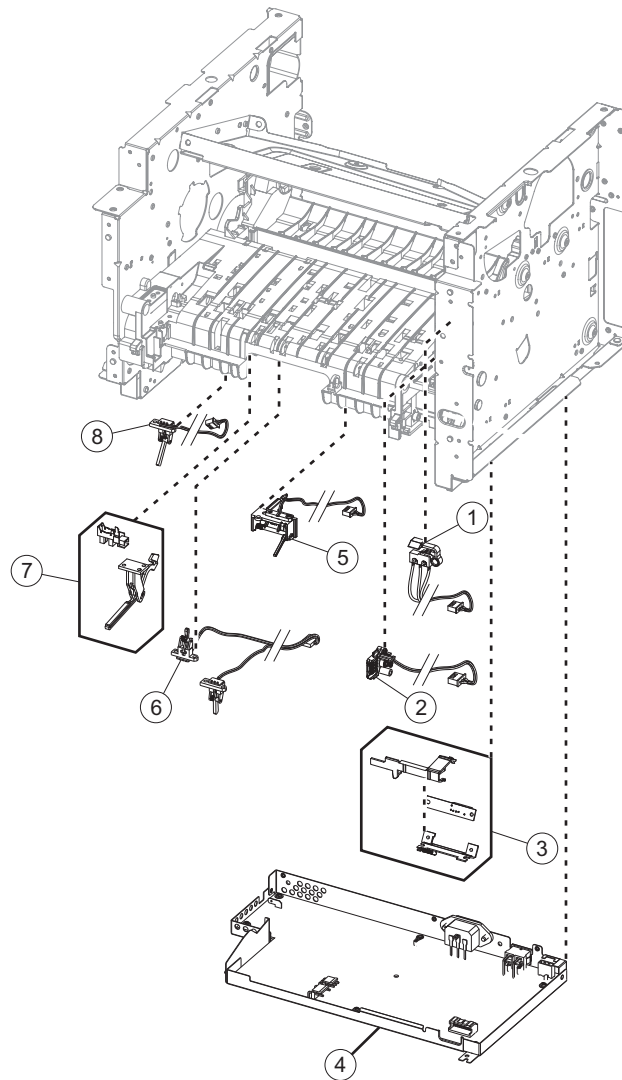
Assembly 2: Electronics 1



Assembly 2: Electronics 1

Asm-index	P/N	Units/mach	Units/FRU	Description	Removal procedure
1	40X8081	1	1	Laser scanning unit	"Laser scanning unit (LSU) removal" on page 246
2	40X8343	1	1	Fuser, 100 V	"Fuser removal" on page 244
2	40X8023	1	1	Fuser, 110 V	"Fuser removal" on page 244
2	40X8024	1	1	Fuser, 220 V	"Fuser removal" on page 244
3	40X8050	1	1	Narrow media/bin full sensor	"Narrow media/bin full sensor removal" on page 241
4	40X8276	1	1	Cooling fan (MS510dn, MS610dn)	"Cooling fan removals" on page 180
4	40X8274	1	1	Cooling fan (MS610de)	"Cooling fan removals" on page 180
5	40X8029	1	1	Controller board (MS510dn)	"Controller board removals" on page 184
5	40X8030	1	1	Controller board (MS610dn)	"Controller board removals" on page 184
6	40X8388	1	1	Controller board (MS610de)	"Controller board removals" on page 184
7	40X7592	1	1	Tray present sensor	"Tray present sensor removal" on page 179
8	40X8280	1	1	Front input guide	"Front input guide removal" on page 219
9	40X8300	1	1	MPF solenoid	"MPF solenoid removal" on page 169
10	40X8301	1	1	Reverse solenoid	"Reverse solenoid removal" on page 174
11	40X8285	1	1	Control panel assembly (MS610de)	"Control panel assembly removals" on page 201
12	40X8292	1	1	Control panel assembly (MS510dn)	"Control panel assembly removals" on page 201
12	40X8284	1	1	Control panel assembly (MS610dn)	"Control panel assembly removals" on page 201

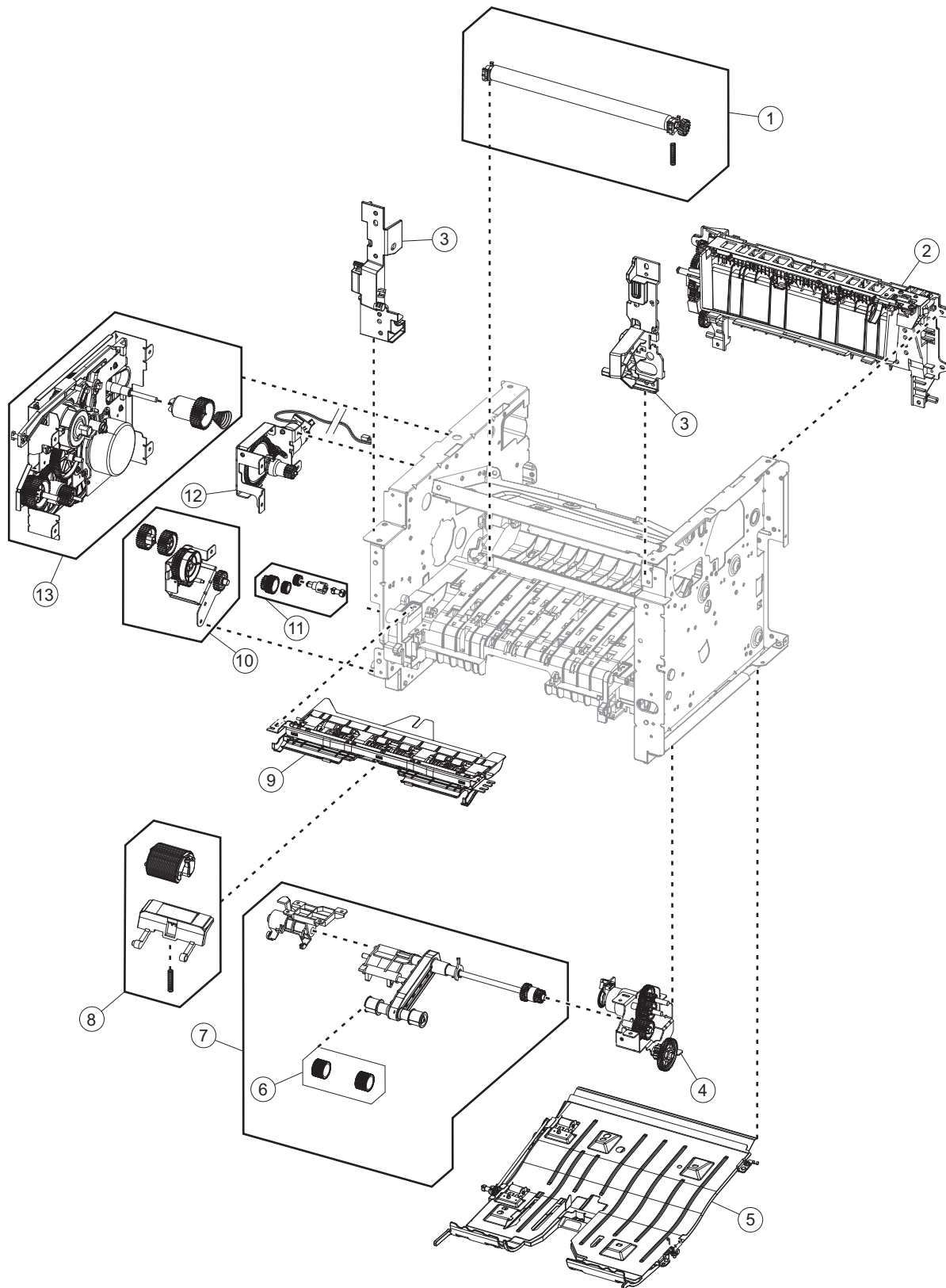
Assembly 3: Electronics 2



Assembly 3: Electronics 2

Asm-index	P/N	Units/mach	Units/FRU	Description	Removal procedure
1	40X8048	1	1	Front door sensor	"Front door sensor removal" on page 218
2	40X8266	1	1	Cartridge smart chip contact	"Toner cartridge smart chip contact removal" on page 188
3	40X8046	1	1	Toner density sensor	"Toner density sensor removal" on page 232
4	40X7797	1	1	Power supply, 100 V/110 V	"Power supply removal" on page 223 or "Power supply removal (MS610)" on page 224
4	40X7798	1	1	Power supply, 220 V	"Power supply removal" on page 223 or "Power supply removal (MS610)" on page 224
5	40X8045	1	1	Trailing edge sensor	"Trailing edge sensor removal" on page 232
6	40X8043	1	1	Duplex sensor and input sensor	"Duplex sensor and input sensor removal" on page 227
7	40X7592	1	1	Media present sensor	"Media present sensor removal" on page 230
8	40X8044	1	1	Index sensor	"Index sensor removal" on page 230

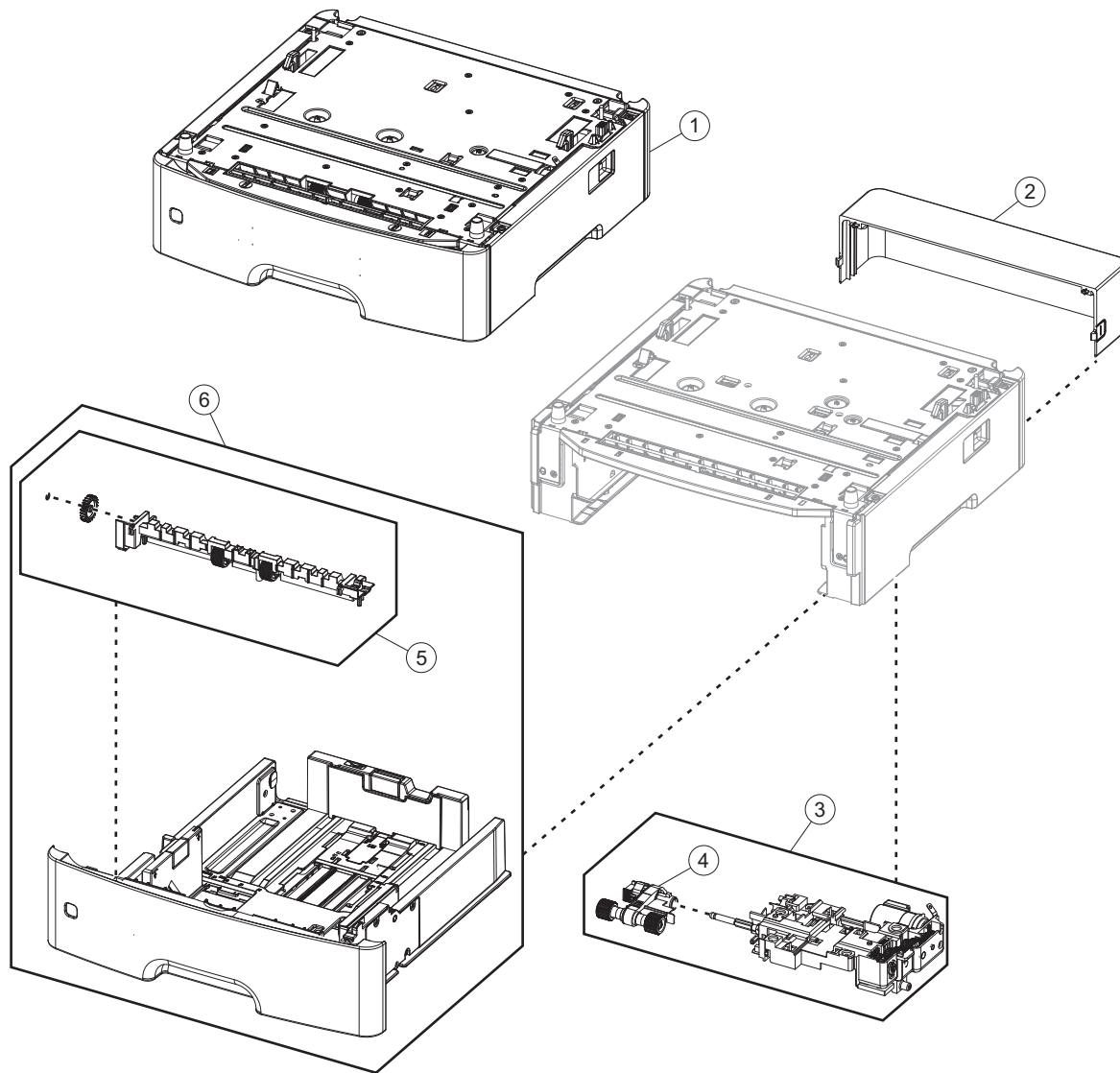
Assembly 4: Frame



Assembly 4: Frame

Asm-index	P/N	Units/mach	Units/FRU	Description	Removal procedure
1	40X5364	1	1	Transfer roll	"Transfer roll removal" on page 193
2	40X8298	1	1	Redrive assembly (MS510dn)	"Redrive assembly removal" on page 243
2	40X8437	1	1	Redrive assembly (MS611dn)	"Redrive assembly removal" on page 243
2	40X8438	1	1	Redrive assembly (MS611de)	"Redrive assembly removal" on page 243
3	40X8299	1	1	Front mounts	"Left front mount removal" on page 190 "Right front mount removal" on page 191
4	40X8084	1	1	Pick/Lift motor gearbox	"Pick/Lift motor gearbox removal" on page 239
5	40X8275	1	1	Duplex assembly	"Duplex removal" on page 226
6	40X8297	2	1	Pick tire	N/A
7	40X8261	1	1	ACM assembly	"ACM assembly removal" on page 233
8	40X8295	2	2	MPF pick roller and separator pad	"MPF pick roller removal" on page 213 and "Separator pad removal" on page 221
9	40X8279	1	1	Jam access cover	"Jam access cover removal" on page 214
10	40X8278	1	1	MPF gearbox	"MPF gearbox removal" on page 171
11	40X8277	1	1	Duplex gear assembly	"Duplex gear assembly removal" on page 176
12	40X8083	1	1	Cartridge gearbox	"Cartridge gearbox removal" on page 175
13	40X8085	1	1	Main drive gearbox	"Main drive gearbox removal" on page 167
NS	40X8394	1	1	Screw kit	N/A

Assembly 5: Option trays



Assembly 5: Option trays

Asm-index	P/N	Units/opt	Units/FRU	Description	Removal procedure
1	40X8287	1	1	250-sheet tray	N/A
1	40X8286	1	1	550-sheet tray	N/A
2	40X8520	1	1	Dust cover, 250-sheet tray	"Dust cover removal" on page 240
2	40X8521	1	1	Dust cover, 550-sheet tray	"Dust cover removal" on page 240
3	40X8262	1	1	ACM assembly	"ACM assembly removal" on page 250
4	40x8443	1	1	Pick roller assembly	"Pick roller removal" on page 247
5	40X8444	1	1	Separator roll assembly	"Separator roll assembly removal" on page 248
6	40X8305	1	1	250-sheet tray insert	N/A
6	40X8086	1	1	550-sheet tray insert	N/A

Assembly 6: Maintenance kits

Asm-index	P/N	Units/mach	Units/FRU	Description	Removal procedure
NS	40X8439	1	1	Maintenance kit, 100 V (MS510dn) <ul style="list-style-type: none"> • 100 V fuser (40X8343) • Paper exit guide (40X8298) • ACM pick roll (40X8297) • Transfer roll (40X5364) • Tray separator roll assembly (40X8444) • MPF pick roll and separator pad (40X8295) 	N/A
NS	40X8281	1	1	Maintenance kit, 110 V (MS510dn) <ul style="list-style-type: none"> • 110 V fuser (40X8023) • Paper exit guide (40X8298) • ACM pick roll (40X8297) • Transfer roll (40X5364) • Tray separator roll assembly (40X8444) • MPF pick roll and separator pad (40X8295) 	N/A
NS	40X8282	1	1	Maintenance kit, 220 V (MS510dn) <ul style="list-style-type: none"> • 220 V fuser (40X8024) • Paper exit guide (40X8298) • ACM pick roll (40X8297) • Transfer roll (40X5364) • Tray separator roll assembly (40X8444) • MPF pick roll and separator pad (40X8295) 	N/A
NS	40X8440	1	1	Maintenance kit, 100 V (MS610dn) <ul style="list-style-type: none"> • 100 V fuser (40X8343) • Paper exit guide (40X8298) • ACM pick roll (40X8297) • Transfer roll (40X5364) • Tray separator roll assembly (40X8444) • MPF pick roll and separator pad (40X8295) 	N/A
NS	40X8433	1	1	Maintenance kit, 110 V (MS610dn) <ul style="list-style-type: none"> • 110 V fuser (40X8023) • Paper exit guide (40X8437) • ACM pick roll (40X8297) • Transfer roll (40X5364) • Tray separator roll assembly (40X8444) • MPF pick roll and separator pad (40X8295) 	N/A

Asm-index	P/N	Units/mach	Units/FRU	Description	Removal procedure
NS	40X8435	1	1	Maintenance kit, 220 V (MS610dn) <ul style="list-style-type: none"> • 220 V fuser (40X8024) • Paper exit guide (40X8437) • ACM pick roll (40X8297) • Transfer roll (40X5364) • Tray separator roll assembly (40X8444) • MPF pick roll and separator pad (40X8295) 	N/A
NS	40X8441	1	1	Maintenance kit, 100 V (MS610de) <ul style="list-style-type: none"> • 100 V fuser (40X8343) • Paper exit guide (40X8298) • ACM pick roll (40X8297) • Transfer roll (40X5364) • Tray separator roll assembly (40X8444) • MPF pick roll and separator pad (40X8295) 	N/A
NS	40X8434	1	1	Maintenance kit, 110 V (MS610de) <ul style="list-style-type: none"> • 110 V fuser (40X8023) • Paper exit guide (40X8438) • ACM pick roll (40X8297) • Transfer roll (40X5364) • Tray separator roll assembly (40X8444) • MPF pick roll and separator pad (40X8295) 	N/A
NS	40X8436	1	1	Maintenance kit, 220 V (MS610de) <ul style="list-style-type: none"> • 220 V fuser (40X8024) • Paper exit guide (40X8438) • ACM pick roll (40X8297) • Transfer roll (40X5364) • Tray separator roll assembly (40X8444) • MPF pick roll and separator pad (40X8295) 	N/A

Assembly 7: Power cords

Asm-index	P/N	Units/mach	Units/FRU	Description	Removal procedure
NS	40X0269	1	1	Power cord, 2.5 m (straight)—USA, Canada	N/A
NS	40X3141	1	1	Power cord, 2.5 m (straight)—Europe and others	N/A
NS	40X0288	1	1	Power cord, 2.5 m (straight)—Argentina	N/A
NS	40X0271	1	1	Power cord, 2.5 m (straight)—United Kingdom	N/A
NS	40X0275	1	1	Power cord, 2.5 m (straight)—Israel	N/A
NS	40X1772	1	1	Power cord, 2.5 m (straight)—Switzerland	N/A
NS	40X1773	1	1	Power cord, 2.5 m (straight)—South Africa	N/A
NS	40X0273	1	1	Power cord, 2.5 m (straight)—Traditional Italy	N/A
NS	40X1774	1	1	Power cord, 2.5 m (straight)—Denmark	N/A
NS	40X4596	1	1	Power cord, 2.5 m (straight)—Brazil	N/A
NS	40X0303	1	1	Power cord, 2.5 m (straight)—China	N/A
NS	40X0270	1	1	Power cord, 2.5 m (straight)—Japan	N/A
NS	40X1792	1	1	Power cord, 2.5 m (straight)—Korea	N/A
NS	40X1791	1	1	Power cord, 2.5 m (straight)—Taiwan	N/A
NS	40X0301	1	1	Power cord, 2.5 m (straight)—Australia	N/A