



***TECHNICAL BULLETIN***  
***ECOSYS P3260DN/P3155DN/P3150DN/P3145DN***

<b>SUBJECT:</b>	<b>BULLETIN INDEX</b>	<b>09/26/19</b>
-----------------	-----------------------	-----------------

<b><u>SUBJECT:</u></b>	<b><u>BULLETIN #</u></b>
NEW MODEL PRODUCT INFORMATION .....	1

# TABLE OF CONTENTS

<b>INTRODUCTION</b> .....	<b>1</b>
<b>GENERAL INFORMATION</b> .....	<b>1</b>
<b>DEALER LIMITED WARRANTY</b> .....	<b>2</b>
<b>WARRANTY RETURNS</b> .....	<b>3</b>
<b>PRODUCT TRAINING</b> .....	<b>3</b>
<b>SERVICE DOCUMENTATION</b> .....	<b>4</b>
<b>MAXIMUM MONTHLY VOLUME</b> .....	<b>4</b>
<b>PRINTER</b> .....	<b>4</b>
<b>ACCESSORY / OPTIONS</b> .....	<b>5</b>
<b>YIELDS OF SUPPLY ITEMS &amp; COST PER COPY</b> .....	<b>7</b>
<b>MAINTENANCE KIT YIELDS &amp; COST PER COPY</b> .....	<b>7</b>
<b>MAINTENANCE KIT CONTENTS</b> .....	<b>7</b>
<b>FIRMWARE INFORMATION</b> .....	<b>8</b>
<b>MEMORY SPECIFICATIONS</b> .....	<b>8</b>
<b>MEMORY TYPE</b> .....	<b>8</b>
<b>PRINTER SPECIFICATIONS</b> .....	<b>9</b>
<b>PRINTER SPECIFICATIONS (CONTINUED)</b> .....	<b>10</b>
<b>PRINTER SPECIFICATIONS (CONTINUED)</b> .....	<b>11</b>
<b>PRINTER SPECIFICATIONS (CONTINUED)</b> .....	<b>12</b>
<b>PF-3110 SPECIFICATIONS</b> .....	<b>13</b>
<b>PF-3100</b> .....	<b>13</b>
<b>IB-51 SPECIFICATIONS</b> .....	<b>14</b>
<b>DIFFERENCES BETWEEN STANDARD OPTIONAL IB-36 AND IB-51</b> .....	<b>15</b>
<b>BTU'S</b> .....	<b>15</b>
<b>POWER CONSUMPTION</b> .....	<b>16</b>
<b>INSTALLATION REQUIREMENTS</b> .....	<b>17</b>
<b>MACHINE SPACE REQUIREMENTS</b> .....	<b>17</b>
<b>UTILITIES</b> .....	<b>18</b>
<b>PRINT DRIVERS</b> .....	<b>18</b>
<b>PRODUCT CONFIGURATION</b> .....	<b>19</b>
<b>PRODUCT CONFIGURATOR</b> .....	<b>20</b>
<b>ACTIVATING DATA ENCRYPTION/OVERWRITE</b> .....	<b>21</b>
<b>CABINET ASSEMBLY INSTRUCTIONS</b> .....	<b>22</b>



**RECOMMENDED ACTION FOR FIELD MACHINES**

- |                                   |  |
|-----------------------------------|--|
| <input type="checkbox"/> AT SETUP | <input type="checkbox"/> NEXT SERVICE CALL           |
| <input type="checkbox"/> NEXT PM  | <input checked="" type="checkbox"/> INFORMATION ONLY |

## **TECHNICAL BULLETIN**

### **ECOSYS P3260DN/P3155DN/P3150DN/P3145DN**

<b>Bulletin #</b> P3260DN/P3155DN/ P3150DN/P3145DN-01	<b>Model</b> P3260DN/P3155DN/ P3150DN/P3145DN	<b>Date</b> 09/26/19
<b>Subject</b> NEW MODEL PRODUCT INFORMATION		
<small>This technical publication is confidential information that is the property of KYOCERA Document Solutions America, Inc. It is solely for the use of KYOCERA Document Solutions authorized dealers. This information may not be published, reproduced, sold, or copied in any media. Its unauthorized use is prohibited. Copyright © 2019 by KYOCERA Document Solutions America, Inc. All rights reserved</small>		

### **INTRODUCTION**

Technical Services is pleased to announce the introduction of the next generation KYOCERA ECOSYS Monochrome Printers. The ECOSYS P3260dn/P3155dn/P3150dn/P3145dn Series Printers are Energy Star compliant, have standard Data Security with optional SSD, and the availability of a High Yield Toner Container for the 62ppm model.

- P3260dn 62 PPM (Letter)
- P3155dn 57 PPM (Letter)
- P3150dn 52 PPM (Letter)
- P3145dn 47 PPM (Letter)

- Long Life a-Si Drum
- Standard 512MB Built-in Memory, Upgradable to a total of 2.5GB
- Standard Data Encryption/Overwrite (Activated by installing an optional Hard Drive)
- High Capacity Toner Available (40k yield) P3260dn only
- AirPrint, Google Cloud Print Support, KFS and KNM ready



### **GENERAL INFORMATION**

Product Name	ECOSYS P3260dn/P3155dn/P3150dn/P3145dn
Product Code	2TT/2TS/2TR/2WD
Product Training	Learning Center on KDACentral
Diagnostic Center Contact Number	1-800-255-6482
KDACentral Web Site	KDACentral.com
KDACentral Help Desk	<a href="mailto:dealersupport@da.kyocera.com">dealersupport@da.kyocera.com</a>
Kyocera Public Web Site	<a href="http://kyoceradocumentsolutions.com/">kyoceradocumentsolutions.com/</a>
Kyocera Technical Support (Email)	<a href="mailto:support@da.kyocera.com">support@da.kyocera.com</a>
Safety Data Sheet (SDS)	Available on KDACentral
National Processing Center (Customer Service)	1-866-596-2372 or <a href="mailto:customer_service@da.kyocera.com">customer_service@da.kyocera.com</a>
National Training Center	<a href="mailto:training@da.kyocera.com">training@da.kyocera.com</a>

## **DEALER LIMITED WARRANTY FOR ECOSYS SERIES PRINTERS**

KYOCERA Document Solutions America, Inc. ("KYOCERA") warrants its new ECOSYS Series Printers to Authorized Dealers as follows:

**Mainframes and Accessories.** The Printers mainframe and accessories are warranted against defects in workmanship and material under normal use and service for a period of 36 months from installation with first end-user, or 39 months from KYOCERA's invoice date to Dealer, or the specified number of copies/prints listed on the next page, whichever occurs first (referred to herein as "Printers Warranty Period"). KYOCERA's obligation hereunder is expressly limited to providing Dealer with the parts required to repair the Printers or crediting Dealer's account for the cost of said parts, at KYOCERA's election.

**Maintenance Kits.** Maintenance Kits generally consist of the developing unit, the drum unit, and the fixing unit. Components of Maintenance Kits included with the original Printers are warranted against defects in material and workmanship for a period of 36 months from date of installation with first end-user, or 39 months from KYOCERA's invoice date to Dealer (referred to herein as Original Maintenance Kit Warranty Period), or the specified number of copies/prints listed on the next page (referred to herein as Original Maintenance Kit Copy Allowance), whichever occurs first. Replacement Maintenance Kits purchased and installed after the Original Maintenance Kit Copy Allowance has expired, shall have a limited warranty for the specified number of copies/prints, or until the Original Maintenance Kit Warranty Period expires, whichever occurs first. Replacement Maintenance Kits purchased and installed after the Original Maintenance Kit Warranty Period has expired shall have a limited warranty of 90 days. To be covered by this 90 day warranty, the Replacement Kit must be installed and registered prior to the Printer exceeding 10% of the Original Maintenance Kit Copy Allowance.

These warranties do not cover Printers or components of Maintenance Kits which: (a) have become damaged due to operator negligence, misuse, accidents, improper storage or unusual physical or electrical stress, (b) have used parts or supplies which are not genuine KYOCERA brand parts or supplies, (c) have been installed or serviced by a technician not employed by KYOCERA or an Authorized KYOCERA Dealer, (d) have had the serial number modified, altered, or removed, or (e) Dealer fails to register the installation information for the Printer with KYOCERA utilizing **KDACentral**.

THESE WARRANTIES SHALL BE IN LIEU OF ALL OTHER WARRANTIES, EXPRESSED OR IMPLIED, INCLUDING WARRANTIES OF MERCHANTABILITY OR FITNESS FOR A PARTICULAR PURPOSE. KYOCERA SHALL NOT BE LIABLE FOR ANY INCIDENTAL OR CONSEQUENTIAL DAMAGES WHICH MAY ARISE OUT OF THE USE OF, OR INABILITY TO USE, THE PRINTER.

<b>Printer Model</b>	<b>Total Copies/Prints</b>	<b>Original Maintenance Kit Copy Allowance</b>
P3145dn	900,000	300,000
P3150dn/P3155dn/P3260dn	2,000,000	500,000

## **WARRANTY RETURNS**

To submit any Parts RETURN, simply log-on to our Order and Tracking System, go to Returns and request a Return Authorization. Select the appropriate Return Type.

**To Process your Warranty Claim and verify other key information, the Maintenance Pages, Status Page, Service Status Page, Event Log & Image Quality Samples must be included if the item is to be returned to the National Return Center or Uploaded, if prompted to do so. If all of these are not Included or Uploaded with the Warranty Claim, your request may be delayed or denied.**

To ensure quality, especially of new products, we will have parts returned on new product introductions for a period of approximately six months.

For assistance with the Parts Warranty Return System, please contact the Parts Warranty Help Line at 866-596-2372, Option 3.

## **PRODUCT TRAINING**

Information	
*Product Training	Technical Learning Center on KDACentral
Prerequisites	ECOSYS P3060dn/P3055dn/P3050dn/P3045dn

Technicians, who have previously completed ECOSYS P3060dn/P3055dn/P3050dn/P3045dn Online Technical Training Course, **are automatically certified on the new P3260dn/3155dn/P3150dn/P3145dn models.**

Technicians who do not meet the Training Prerequisite must complete the ECOSYS P3060dn/P3055dn/P3050dn/P3045dn full Online Technical Training Course. This course includes an Update Chapter for the new models.

Before a Technician can take the ECOSYS P3060dn/P3055dn/P3050dn/P3045dn Online Technical Training Course, the following Online Technical Training Courses must be completed first.

- **Online - Using the Meter**
- **Online - Using the Logs**
- **Online - Using the Service Manual**
- **Online - Network Connectivity**



Other recommended courses:

- **Online - IB-51 Wireless Network Card Technical Training Course**
- **Online - Data Security Kit Technical Training Course**

## **SERVICE DOCUMENTATION**

Description	Availability
ECOSYS P3155dn/P3150dn/P3145dn Service Manual and Accessories	Available on KDACentral
ECOSYS P3155dn/P3150dn/P3145dn Parts List and Accessories	Available on KDACentral
ECOSYS P3155dn/P3150dn/P3145dn Operation Guide	Available on KDACentral
ECOSYS P3155dn/P3150dn/P3145dn Quick Installation Guide	Available on KDACentral Packaged In Box
ECOSYS P3155dn/P3150dn/P3145dn Safety Guide	Available on KDACentral Packaged In Box
ECOSYS P3260dn/P3155dn/P3150dn/P3145dn Driver Guide	Available on KDACentral
ECOSYS P3260dn Service Manual and Accessories	Available on KDACentral
ECOSYS P3260dn Parts List and Accessories	Available on KDACentral
ECOSYS P3260dn Operation Guide	Available on KDACentral
ECOSYS P3260dn Quick Installation Guide	Available on KDACentral
IB-51 Web Browser Management Guide	Available on KDACentral
IB-50 Setup Guide	Available on KDACentral
IB-50 Operation Guide (HTML format)	Available on KDACentral
Kyocera Command Center RX User Guide	Available on KDACentral
Kyocera NET Viewer User Guide	Available on KDACentral
Kyocera NET Direct Print Operation Guide	Available on KDACentral
File Management Utility User Guide	Available on KDACentral
Data Encryption/Overwrite Operation Guide	Available on KDACentral
PRESCRIBE Command Reference Operation Guide	Available on KDACentral
PRESCRIBE Technical Reference Operation Guide	Available on KDACentral
PCL Barcode Flash 3.0 User's Manual	Available on KDACentral
PCL Barcode Flash Device Support and KYOmulticode Manual v2014.03.13	Available on KDACentral
PCL Barcode Flash 3.0/KYOmulticode 1.0 Quick Installation Guide Rev-3.4.03.2013	Available on KDACentral

## **MAXIMUM MONTHLY VOLUME**

MAX. Monthly Volume	
P3260dn	300K
P3155dn	250K
P3150dn	200K
P3145dn	150K

## **PRINTER**

Item	Part Number	Description
ECOSYS P3260dn	1102WD2US0	62 ppm A4 Monochrome Printer
ECOSYS P3155dn	1102TR2US0	57 ppm A4 Monochrome Printer
ECOSYS P3150dn	1102TS2US0	52 ppm A4 Monochrome Printer
ECOSYS P3145dn	1102TT2US0	47 ppm A4 Monochrome Printer

## ACCESSORY / OPTIONS

Item	Part Number	Description
<b>Paper Feeders</b>		
PF-3110	1203SA0KL1	500-sheet Paper Feeder (Four Units Max) <a href="#">Updated for use with Caster Kit</a>
PF-3100	1203S30KL0	2,000-sheet Paper Feeder (Requires PB-325)
PB-325	1903N10UN0	Attachment Kit Base for PF-3100
<b>Connectivity</b>		
IB-50	1505JV0UN0	Gigabit Ethernet
IB-51	1505J50UN0	Wireless LAN (Approx 328 ft Range)
IB-36	1503S50UN0	Wireless LAN NIC (Approx. 98 ft Range & Wi-Fi Direct)
IB-32B	1503N50UN1	Parallel Interface Kit
HD-6	1505J40UN0	SSD Memory Storage Device (32GB)
HD-7	1505J80UN0	SSD Memory Storage Device (128GB)
Data Encryption/Overwrite	Hard Drive Encryption Overwrite (Free activation. Requires an Optional Hard Drive to activate)	
<b>Memory</b>		
SD-144-1GB(DDR3)	855D200662	Printer DIMM Memory (1GB)
SD-144-2GB(DDR3)	855D200714	Printer DIMM Memory (2GB)
SDHC Card-32GB	855D200648	SD Card Memory for storage, 32GB
SDHC Card-16GB	855D200647	SD Card Memory for storage, 16GB
<b>Miscellaneous</b>		
CA-3110	1903T50UN0	Caster Kit (Can only be configured using the Updated PF-3110 P/N 1203SAOKL1 which contains the support brackets necessary when four Paper Feeders are installed)
UG-33	1503NT0UN0	Thin Print Support
PT-320	1203N70UN0	250 sheet Face-up Tray (P3150dn/P3155dn/P3160dn Only)
Stand	855D200655	Current Stand
Card Authentication Kit (B)	See Separate Price List on KDAcentral for Options	

**To use a Stored Job Box or Quick Copy Box functions, an optional SSD must be installed in the printer. Proof-and-Hold and Private Print can be used by turning RAM Disk ON.**

**With the HD-6 or HD-7 SSD installed in the printer, received data can be rasterized and stored on this SSD. This enables high-speed printing of multiple copies using an electric sort function.**

**Only One KUIO open slot is available, allowing one of the following to be installed. HD-6, HD-7 IB-32, IB-50 or an IB-51.**

Key Boards Tested		
Adesso	ACK-595 USB	Other USB KeyBoards may be compatible. Key Boards are available at CDW or other vendors who carry them.
Adesso	Wireless Keyboard WKB-3100ub	
Cherry Corp	Cherry keyboard ML4100PTAUS (USB)	





### **YIELDS OF SUPPLY ITEMS & COST PER COPY**

Description	Part Number	Yield New Container	Yield Starter Container	Price	CPC
Toner TK-3202 (High Yield) (P3260dn)	1T02WF0US0	40K@ISO19752	11K @ISO19752	100.00	0.0025
Toner TK-3192 (P3260dn)	1T02T60US0	25K@ISO19752		\$68.50	0.00274
Toner TK-3182 (P3155dn)	1T02T70US0	21K@ISO19752	10K@ISO19752	\$63.50	0.00302
Toner TK-3172 (P3150dn)	1T02T80US0	15.5K@ISO19752	8K @ISO19752	\$60.26	0.00388
Toner TK-3162 (P3145dn)	1T02T90US0	12.5K@ISO19752	6K @ISO19752	\$59.40	0.00475
WT-3100	302LV93020	25K			----
WT-3200 (P3260dn)	302WD93010	40K			----

One Waste Toner Bottle is included with each Toner Container  
 TK-3202 Toner Price is for one container and is based on bulk 8+ price.  
 TK-3192/3182/3172/3162 Toner Price is for one container and is based on bulk 15+ price.

### **MAINTENANCE KIT YIELDS & COST PER COPY**

Description	Part Number	Yield	Price	CPC
MK-3302 Maintenance Kit (P3150dn/P3155dn/P3260dn)	1702TA7US0	500K	\$199.45	0.000398
MK-3262 Maintenance Kit (P3145dn)	1702V37US0	300K	\$183.60	0.000612

**Maintenance Kits are exclusive to these models**

### **MAINTENANCE KIT CONTENTS**

#### **P3150dn/P3155dn/P3260dn / 500K**

Item	Description	Item Number	Quantity
MK-3302	RETARD ROLLER ASS'Y	302F909171	1
	HOLDER RETARD B	3V2LV09311	1
	GUIDE RETARD C	302LV09340	1
	SPRING RETARD B	302LV09330	1
	Parts Holder Feed Ass'y SP	302LV94270	1
	Parts Roller Transfer Ass'y	302LV94130	1
	Gear Z22R TC	302LV24140	1
	DK-3192(U)	302T693041	1
	DV-3100	302LV93081	1
	FK-3302 (U)	302TA93050	1

**P3145dn / 300K**

Item	Description	Item Number	Quantity
MK-3262	RETARD ROLLER ASS'Y	302F909171	1
	HOLDER RETARD B	3V2LV09311	1
	GUIDE RETARD C	302LV09340	1
	SPRING RETARD B	302LV09330	1
	DV-3100	302LV93081	1
	Parts Holder Feed Ass'y SP	302LV94270	1
	Parts Roller Transfer Ass'y	302LV94130	1
	Gear Z22R TC	302LV24140	1
	DK-3172(U)	302T993071	1
	FK-3202 (U)	302V393060	1

Contents subject to change without notice

**FIRMWARE INFORMATION**

Firmware	Program	Version	Upgrade Method	Availability
CONTROLLER	2TP_S000.003.074	003.074	USB/KFS	Available on KDACentral
ENGINE	2V2_1000.003.011	003.011		
LANGUAGE BR	2TP_81BR.003.011	003.011		
PF-3110	3NY_9000.003.001	003.001		

Note: If updating by USB, refer to the Firmware Upgrade Procedure in The Service Manual. After Updating Firmware, unplug the power cord, remove the memory stick and plug-in the power cord. Turn the power switch ON.

Technical Services recommends checking Firmware Versions at Setup and Upgrade to the latest Versions available on KDACentral.

**MEMORY SPECIFICATIONS**

The ECOSYS P3260dn/P3155dn/P3150dn/P3145dn is equipped with 512MB of standard built-in Memory, upgradable to a total of 2.5GB

Model	Standard	Maximum
P3260DN/P3155DN/P3150DN/P3145DN	512MB Built-in	512MB + 2GB DIMM = 2.5GB

**MEMORY TYPE**

Item	Specification
Type & Number of Pins	144pin DDR3-DIMM

## PRINTER SPECIFICATIONS

Item		Description			
		47 ppm	52 ppm	57 ppm	62 ppm
<b>Type</b>		Desktop			
<b>Printing Method</b>		Electrophotography by semiconductor laser			
<b>Paper Weight</b>	<b>Cassette</b>	60 to 120 g/m <sup>2</sup>			
	<b>Multi-Purpose Tray</b>	60 to 220 g/m <sup>2</sup>			
<b>Paper Type</b>	<b>Cassette</b>	Plain, Rough, Recycled, Preprinted, Bond, Color (Colour), Prepunched, Letterhead, High Quality, Custom 1 to 8 (Duplex: Same as Simplex)			
	<b>Multi-Purpose Tray</b>	Plain, Transparency (OHP film), Rough, Vellum, Labels, Recycled, Preprinted, Bond, Cardstock, Color (Colour), Prepunched, Letterhead, Envelope, Thick, High Quality, Custom 1 to 8			
<b>Paper Size</b>	<b>Cassette</b>	A4, A5, A5 (Landscape), B5, Letter, Legal, Statement, Executive, Oficio II, Folio, 216 × 340 mm, 16K, B5 (ISO), Envelope C5, Oufuku Custom (140 × 210)	A4, A5, A5 (Landscape), A6, B5, B6, Letter, Legal, Statement, Statement (Landscape), Executive, Oficio II, Folio, 216 × 340 mm, 16K, B5 (ISO), Envelope DL, Envelope C5, Oufuku Hagaki, Custom (105 × 148 to 216 × 356 mm)		
	<b>Multi-Purpose Tray</b>	A4, A5, A5 (Landscape), A6, B5, B6, Folio, 216 × 340 mm, Letter, Legal, Statement, Statement (Landscape), Executive, Oficio II, 16K, B5 (ISO), Envelope #10, Envelope #9, Envelope #6 3/4, Envelope Monarch, Envelope DL, Envelope C5, Hagaki (Cardstock), Oufuku Hagaki (Return postcard), Youkei 4, Youkei 2, Custom (70 × 148 mm to 216 × 356 mm) Banner sheet (216 × 470.1 mm to 216 × 915 mm)			
<b>Warm-up Time (22°C/71.6°F, 60%)</b>	<b>Power on</b>	16 seconds or less	20 seconds or less	25 seconds or less	25 seconds or less
	<b>Sleep</b>	15 seconds or less	20 seconds or less	25 seconds or less	25 seconds or less
<b>Paper Capacity</b>	<b>Cassette</b>	500 sheets (80 g/m <sup>2</sup> )* <sup>1</sup>			
	<b>Multi-Purpose Tray</b>	100 sheets (80 g/m <sup>2</sup> )			
<b>Output Tray Capacity</b>	<b>Top tray</b>	250 sheets (80 g/m <sup>2</sup> )	500 sheets (80 g/m <sup>2</sup> )		
	<b>Rear tray</b>	-	250 sheets (80 g/m <sup>2</sup> )		
<b>Photoconductor</b>		a-Si drum (diameter 30 mm)			
<b>Image write system</b>		Semiconductor laser			
<b>Charging system</b>		Contact charger roller method			

## **PRINTER SPECIFICATIONS (continued)**

Item		Description			
		47 ppm	52 ppm	57 ppm	62 ppm
<b>Developer system</b>		Mono component dry developing method Toner replenishing: Automatic from the toner container			
<b>Transfer system</b>		Transfer roller method			
<b>Separation system</b>		Small diameter separation, discharger needle (DC bias)			
<b>Cleaning system</b>		Counter blade cleaning + cleaning roller			
<b>Charge erasing system</b>		Exposure by cleaning lamp (LED)			
<b>Fusing system</b>		Heat and pressure fusing with the heat roller and the press roller Heat source: halogen heater Abnormally high temperature protection devices: thermostat			
<b>Memory</b>		512 MB (On-Board) Maximum: 3072 MB (On-Board + 2048MB DIMM)			
<b>Interface</b>	<b>Standard</b>	USB Interface Connector: 1 (Hi-Speed USB) Network interface: 1 (10 BASE-T/100 BASE-TX/1000 BASE-T) USB Port: 2 (Hi-Speed USB)			
	<b>Option</b>	eKUIO: 1			
<b>Operating Environment</b>	<b>Temperature</b>	10 to 32.5°C/50 to 90.5°F			
	<b>Humidity</b>	15 to 80 %			
	<b>Altitude</b>	3,500 m/11,482 ft maximum			
	<b>Brightness</b>	1,500 lux maximum			
<b>Dimension (W × D × H)</b>		14.97" × 16.16" × 11.24"	14.97" × 16.16" × 12.61"	16.38"×16.14"×14.29"	
<b>Weight (without toner container)</b>		Approx. 31.1 lbs	Approx. 34.17 lbs		
<b>Space Required (W × D) (Using multipurpose tray)</b>		14.97" × 23.36"			
<b>Power Source</b>	AC120V,60Hz	10A			

## **PRINTER SPECIFICATIONS (continued)**

Item		Description		
<b>Printing Speed</b>			Single	Duplex
	47 ppm model	A4	45 sheets/min	22.5 sheets/min
		Letter	47 sheets/min	23.5 sheets/min
		Legal	38 sheets/min	19 sheets/min
		B5R	36 sheets/min	18 sheets/min
		A5R	23 sheets/min	11.5 sheets/min
		Statement-R	23 sheets/min	11.5 sheets/min
	52 ppm model	A4	50 sheets/min	35.5 sheets/min
		Letter	52 sheets/min	36.5 sheets/min
		Legal	42 sheets/min	21 sheets/min
		B5R	40 sheets/min	28 sheets/min
		A5	74 sheets/min	-
		A5R	27 sheets/min	19 sheets/min
		Statement	76 sheets/min	-
		Statement-R	27 sheets/min	19 sheets/min
	57 ppm model	A4	55 sheets/min	39 sheets/min
		Letter	57 sheets/min	40 sheets/min
		Legal	46 sheets/min	23 sheets/min
		B5R	44 sheets/min	31 sheets/min
		A5	82 sheets/min	-
A5R		29 sheets/min	20 sheets/min	
Statement		84 sheets/min	-	
Statement-R		29 sheets/min	20 sheets/min	
62 ppm model	A4	60 sheets/min	43 sheets/min	
	Letter	62 sheets/min	44 sheets/min	
	Legal	50 sheets/min	25 sheets/min	
	B5R	48 sheets/min	34 sheets/min	
	A5	90 sheets/min	-	
	A5R	32 sheets/min	23 sheets/min	
	Statement-R	32 sheets/min	23 sheets/min	

## **PRINTER SPECIFICATIONS (continued)**

Item		Description	
<b>First Print Time (A4, feed from Cassette)</b>	47 ppm model	5.3 seconds or less	
	52 ppm model	5.4 seconds or less	
	57 ppm model	4.5 seconds or less	
	62 ppm model	4.5 seconds or less	
<b>Resolution</b>		Fast1200、Fine1200、600 dpi	
<b>Operating System</b>		Windows 7, Windows 8.1, Windows 10, Windows Server 2008/R2, Windows, Server 2012/R2, Windows Server 2016, Windows Server 2019, Mac OS 10.9 or later	
<b>Interface</b>		USB Interface Connector: 1 (Hi-Speed USB) Network interface: 1 (10 BASE-T/100 BASE-TX/1000 BASE-T) Optional Interface (Option): 1 (For IB-50/IB-51) Wireless LAN (Option): 1 (For IB-36)	
<b>Page Description Language</b>		PRESCRIBE	
<b>Emulations</b>		PCL6 (PCL-XL, PCL5e), KPDL3, XPS, Open XPS, TIFF/JPEG, IBM Proprinter, LQ-850, LinePrint	
<b>Operating Noise Measurement method : ISO7779/ISO9296 complaint</b>		Full Speed	Half Speed (Quit Mode)
		62ppm: 57dB(A)	62ppm: 52dB(A)
		57ppm: 56dB(A)	57ppm: 51dB(A)
		52ppm: 55dB(A)	52ppm: 50dB(A)
		47ppm: 54dB(A)	47ppm: 50dB(A)

## **PF-3110 SPECIFICATIONS**

Item	Description
<b>Paper Supply Method</b>	Friction roller feeder
<b>Paper Size</b>	A4, A5, B5, B6, Folio, Letter, Legal, Statement, Executive, Oficio II, 216 × 340 mm, 16K, B5 (ISO), Envelope #10, Envelope #9, Envelope #6 3/4, Envelope Monarch, Envelope DL, Envelope C5, Oufuku Hagaki (Return postcard), Youkei 4, Youkei 2, Custom (92 × 162 to 216 × 356 mm)
<b>Paper capacity</b>	500 sheets (80 g/m <sup>2</sup> )×1: Maximum: 4
<b>Supported Paper</b>	Paper weight: 60 to 120 g/m <sup>2</sup> Media types: Plain, Rough, Recycled, Preprinted, Bond, Color (Colour), Prepunched, Letterhead, Letter, High Quality, Custom 1 to 8
<b>Dimensions (W) × (D) × (H)</b>	14.97" × 16.16" × 4.77"
<b>Weight</b>	8.4 lbs. or less
<b>Power supply</b>	From the machine

## **PF-3100**

Item	Description
<b>Paper Size</b>	Envelope Monarch, Envelope #10, Envelope DL, Envelope C5, Executive, Letter, A4, B5, A5, A6, B6, Envelope #9, Envelope #6, ISO B5, Custom, Hagaki, Oufuku Hagaki, 16K, Statement, Youkei 2 and Youkei 4
<b>Supported Paper</b>	Plain, Transparency, Preprinted, Labels, Bond, Recycled, Vellum, Rough, Letterhead, Color, Prepunched, Envelope, Cardstock, Thick, High Quality, and CUSTOM 1 (to 8)
<b>Paper capacity</b>	2,000 sheets (75 g/m <sup>2</sup> )×1
<b>Dimensions (W) × (D) × (H)</b>	13.6" × 16.6" × 14.6"
<b>Weight</b>	16.54 lbs or less
<b>Power supply</b>	From the machine

## **PB-325**

Item	Description
<b>Dimensions (W) × (D) × (H)</b>	15" × 28" × 7.3"
<b>Weight</b>	14.3 lbs or less

## IB-51 SPECIFICATIONS

Item		Description	
CPU		SoC 88F6180	
RAM		64 MB	
ROM		16 MB	
Wireless network interface	IEEE802.11b	Frequency	2.4GHz
		Transmission system	DS-SS
		Transmission speed	1 / 2 / 5.5 / 11 (Mbps)
		Channel	1-11ch
	IEEE802.11g	Frequency	2.4GHz
		Transmission system	OFDM
		Transmission speed	6 / 9 / 12 / 18 / 24 / 36 / 48 / 54 (Mbps)
		Channel	1-11ch
	IEEE802.11n	Frequency	2.4GHz
		Transmission system	OFDM
		Transmission speed	Max 300Mbps
Channel		1-11ch	
Authentication method		Open System / Shared Key / WPA / WPA2	
Encryption mode		None / WEP (64bit / 128bit) / TKIP / AES When running in IEEE 802.11n, only AES is supported.	
Antenna		Non-directional antenna × 2	
Printer interface		eKUIO (5.0V)	
Operating system		Windows XP (32bit/64bit) / Vista (32bit/64bit) / 7 (32bit/64bit) / Server 2003 (32bit/64bit) / Server 2008 (32bit/64bit) NetWare 3.x. / 4.x. / 5.x. / 6.x MacOS 9.x / Mac OS X (PowerPC: Ver 10.3.x-Ver 10.5.5 / Intel: Ver 10.4.4-Ver 10.7.x) UNIX	
Network protocols	IPv6	Apple Bonjour Compatible, DHCPv6, DNSv6, FTP, FTPS, HTTP, HTTPS(IPPS), ICMPv6, IKEv1, IPP, IPPS, Kerberos, LDAP, LPD, POP3, RawPort, SLP, SMTP, SNMP, SNMPv1/v2c/v3, SNTP, ThinPrint	
	IPv4	Apple Bonjour Compatible, BOOTP, DHCP, DNS, FTP, FTPS, HTTP, HTTPS, ICMP, IPP, IPPS, KCP, Kerberos, LDAP, LPD, NetBIOS over TCP/IP, POP3, POP3 over SSL, RawPort, SLP, SMTP, SNMP, SNMPv1/v2c/v3, SNTP, ThinPrint, WINS	
	Other	AppleTalk, IPX/SPX, LLTD, NetBEUI, NetWare (NDS/Bindery)	
Security protocols		EAP-TLS, IKE, PEAP, SNMPv3, SSL/TLS (HTTPS)	
Operating conditions		0 to 60 °C, 20 to 80 % RH, no condensation	
Storage conditions		-20 to 50 °C, 20 to 90 % RH, no condensation	
EMI conformity		FCC Class B (USA)	

All Specifications Subject to Change without Notice.



### **DIFFERENCES BETWEEN STANDARD OPTIONAL IB-36 and IB-51**


	<b>IB-36</b>	<b>IB-51 Wireless</b>
Application standards(IEEE)	802.11 b/g/n	802.11 b/g/n
<b>Wi-Fi Direct</b>	<b>Yes</b>	<b>No</b>
Bandwidth Channels used	1~11ch	1~11ch
Communication distance	98ft (30m)	328ft (100m)
Communication speed	20Mbps at a communication distance of 3.2ft (1m)	84Mbps at a communication distance of 3.2ft (1m) *limited by e-KUIO communication speed
Antenna	Pattern Type, built in	Two External

### **BTU's**

Model	Power Consumption		PPM	Prints/ Hr	Watts based on PPM & Pr/Hr	Watts based on PPM & Pr/Hr	kW/hour	Total BTU
	Total Print (W)	Total Ready (W)			Print	Ready		
P3145dn	664	10	47	700	164.8	7.5	0.1723	588.0
	664	10	47	1,500	353.2	4.7	0.3579	1221.1
	664	10	47	2,820	664.0	0.0	0.6640	2265.7
P3150dn	700	11	52	1,000	224.4	7.5	0.2318	791.0
	700	11	52	1,500	336.5	5.7	0.3423	1167.8
	700	11	52	3,130	702.2	0.0	0.7022	2396.0
P3155dn	753	11	57	1,000	220.2	7.8	0.2280	777.8
	753	11	57	2,000	440.4	4.6	0.4449	1518.1
	753	11	57	3,430	755.2	0.0	0.7552	2576.7
P3260dn	753	11	62	1,000	202.4	8.0	0.2105	718.1
	753	11	62	2,000	404.8	5.1	0.4099	1398.7
	753	11	62	3,720	753.0	0.0	0.7530	2569.3

**Total BTU's are based on Prints per Minute, Prints per Hour. Watts are based on PPM & Pr/Hr and Kw/Hour.**

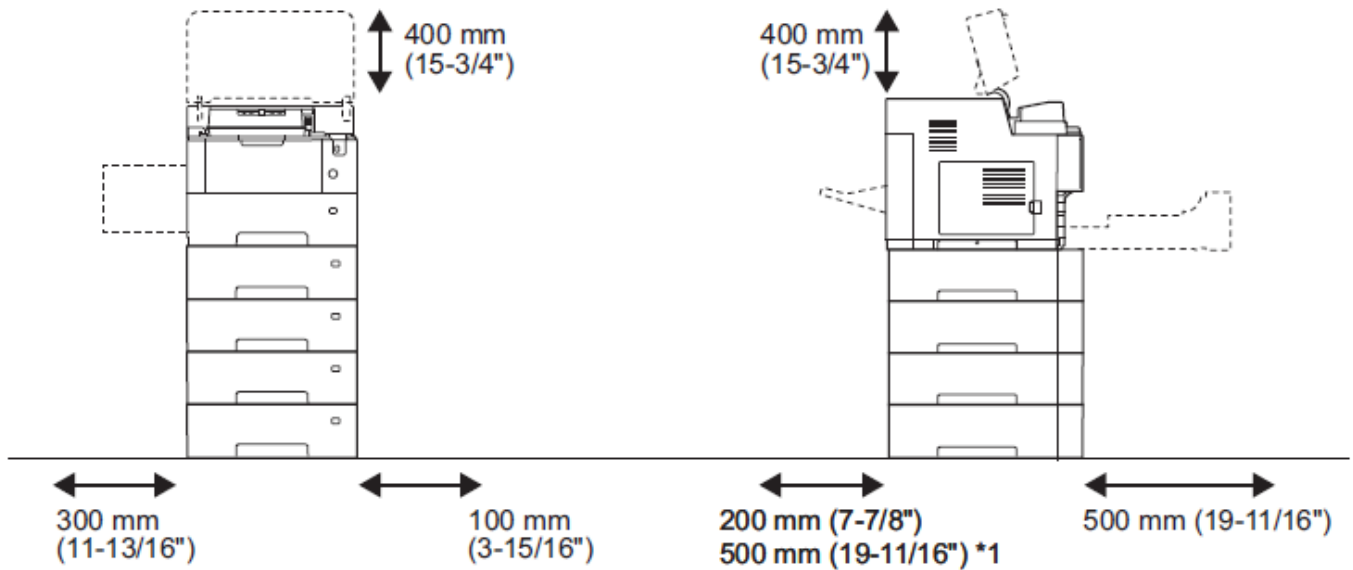
## POWER CONSUMPTION

Specification		Main Body
Voltage requirements (Standard Configuration)	US/Canada	120 V AC $\pm 10\%$ , 60Hz $\pm 2\%$
P3145dn	Maximum	1,148W
	Off Mode	0.05W
	Sleep Mode	0.5W
	Print	664W
	Ready	10W
P3150dn	Maximum	1,153W
	Off Mode	0.05W
	Sleep Mode	0.8W
	Print	700W
	Ready	11W
P3155dn	Maximum	1,164W
	Off Mode	0.05W
	Sleep Mode	0.5
	Print	753W
	Ready	11W
P3260dn	Maximum	1,164W
	Off Mode	0.05W
	Sleep Mode	.7W
	Print	753W
	Ready	11W
Maximum current	US/Canada	P3145dn/9.5A P3260dn/P3155dn/P3150dn/10A
<div style="display: flex; justify-content: space-around; align-items: center;"> <div style="text-align: center;">  <p>NEMA 5-15R</p> </div> <div style="text-align: center;"> <p>NEMA 5-15R</p> </div> </div>		

## **INSTALLATION REQUIREMENTS**

Environmental Requirements	
Installation Time	20 Minutes or less by user
Standard Temperature	71.6°F (22°C)
Standard Humidity	60%RH (Relative Humidity)
Temperature Range	50°F ~ 90°F (10°C ~ 32.5°C)
Humidity Range	15% ~ 80%RH
Condensation and Humidity	Rapid Temperature change, Humidity drift, and condensation should be avoided
Altitude	Maximum 8202 ft. (2,500 meters)
Illumination	Maximum 1,500 lux
Levelness	Maximum levelness: 5mm (0.2inch) The Printer must be placed on a level and sturdy surface

## **MACHINE SPACE REQUIREMENTS**



Allow sufficient access for proper operation and maintenance of the machine.

## **UTILITIES**

<b>NETWORK</b>	<b>Description</b>
PCL Barcode flash 3.0 Type D/E	Print Barcode Utility
Status Monitor	Desktop Status Monitor
KYOCERA NET Viewer	Administrator Utility, which monitors Kyocera network devices with the ability to display and report device conditions via e-mail using SMTP.
KYOCERA NET Direct Print	Allows Direct Printing of Adobe PDF's without launching Adobe's Acrobat or Acrobat Reader applications.
Quick Set-up Utility	Quick Set-up Utility for Network Administrators used to set-up IP Printing and Addresses on Network Printers.

## **PRINT DRIVERS**

Print Drivers can be downloaded from KDACentral. Note: Drivers and Descriptions are periodically updated and versions posted may not match this chart.

<b>Description</b>	<b>Version</b>	<b>Operating System</b>
P3260dn/P3155dn/P3150dn/P3145dn Generic KX Driver	6.3.0909	Win XP, Vista, Win 8, Win Server 2003
P3260dn/P3155dn/P3150dn/P3145dn KX Driver	7.4.1615	Win 7,8.1,10, Server, 2008, 2008 R2, 2012, 2012 R2, Server 2016, 2019
P3260dn/P3155dn/P3150dn/P3145dn KX XPS Driver	2.3.2816	Win 7,8.1,10, Server, 2008, 2008 R2, 2012, 2012 R2, Server 2016, 2019
P3260dn/P3155dn/P3150dn/P3145dn Generic PCL Uni Driver	4.1	Win XP, Vista, Win 8, Win Server 2003
P3260dn/P3155dn/P3150dn/P3145dn PCL Uni Driver	1.6	Win 7,8.1,10, Server, 2008, 2008 R2, 2012, 2012 R2, Server 2016, 2019
P3260dn/P3155dn/P3150dn/P3145dn KPD L Uni Driver	8.1112	Win XP, Vista, Win 8, Win Server 2003
P3260dn/P3155dn/P3150dn/P3145dn KPD L Uni Driver	8.1904	Win 7,8.1,10, Server, 2008, 2008 R2, 2012, 2012 R2, Server 2016, 2019

## PRODUCT CONFIGURATION



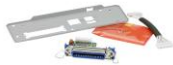
IB-36



IB-51



HD-6/7



IB-32B



IB-50



16/32MB  
SDHC Memory  
Card



PT-320  
(3150dn/3155dn/3260dn Only)



PF-3110  
500 Sheet Paper Feeder  
(Up to four can be added)



PF-3100  
(Cannot use with PF-3110's)



Stand



PB-325  
(For PF-3100)

See Page five for a complete list of Accessories

## PRODUCT CONFIGURATOR

The **Technical Product Configurator** is available on KDA Central. The Configurator can be found under the Support Links Tab or as a Link at every product page. Once open, select the category and choose a model from the drop down.



The screenshot shows the Kyocera Product Configurator interface. At the top left is the Kyocera logo. The main header is "Product Configurator". Below this is a navigation bar with tabs: "Color MFP", "B & W MFP", "Color Printers", "B & W Printers", and "Production". The "B & W Printers" tab is selected. On the left, there is a "To get" section with a dropdown menu listing models: ECOSYS P2040dw, ECOSYS P2235dw, ECOSYS P3045dn, ECOSYS P3050dn, ECOSYS P3055dn, and ECOSYS P3060dn. To the right of the dropdown is a "Category and Pick a Model" section. Below the dropdown is a large image of several Kyocera multifunction printers. To the right of the printer image is a "Kyocera Product Configurator" section with a blue starburst icon and a printer icon. Below this is a text block: "Technical Services provides the Kyocera Product Configurator Tool for reference purposes. All Item numbers, Quantities, Compatibility, etc. should be cross referenced with Marketing and Sales Information." At the bottom right, there is a disclaimer: "Disclaimer: Some selected accessories/configurations may not show on the image when displayed or available as a selection."

## ACTIVATING DATA ENCRYPTION/OVERWRITE

1. Install an Optional Hard Disk or SSD and power the device ON.
2. Follow any prompts to format the Drive.
3. Select System Menu>System Network>Optional Function. Fig. 1
4. You will now see **Data Encr./Overwrite** Function displayed. Fig 2
5. Select it and press Activate.
6. When you see the Activation Prompt, select Yes. Fig 3
7. You will see another Prompt that will display for approx. 2 sec showing "Activated".
8. Power the Device Off/ON.
9. A screen will display asking you to enter a unique Encryption Code. Fig 4. Enter a Code. Write this code down for future reference. **Refer to the Data Encryption/Overwrite Operation Guide for more details.**

Fig. 1

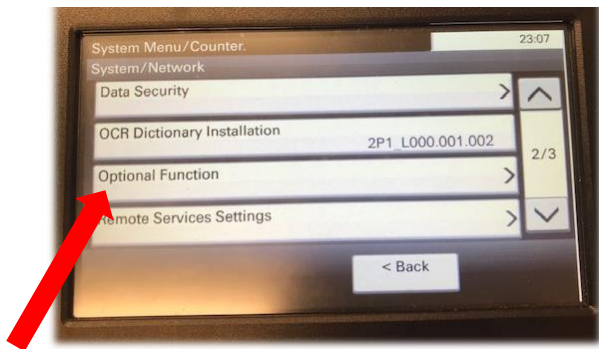


Fig. 2

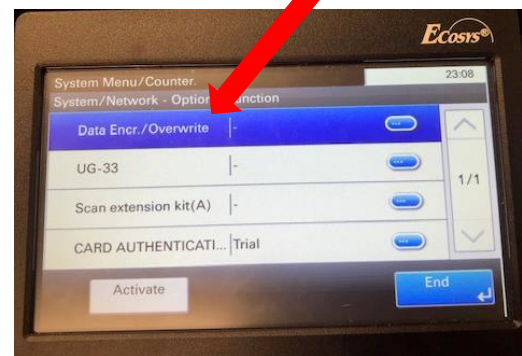


Fig. 3

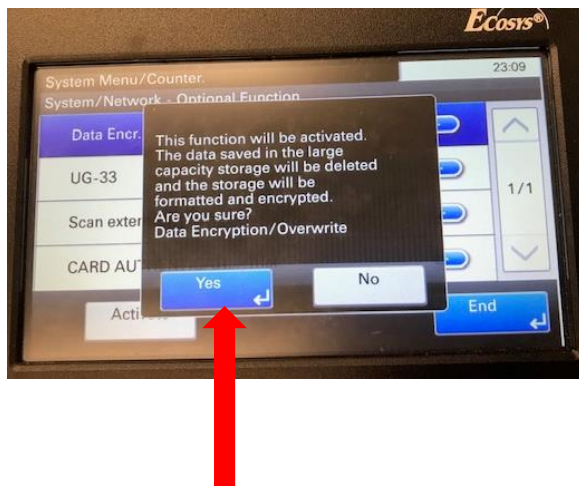
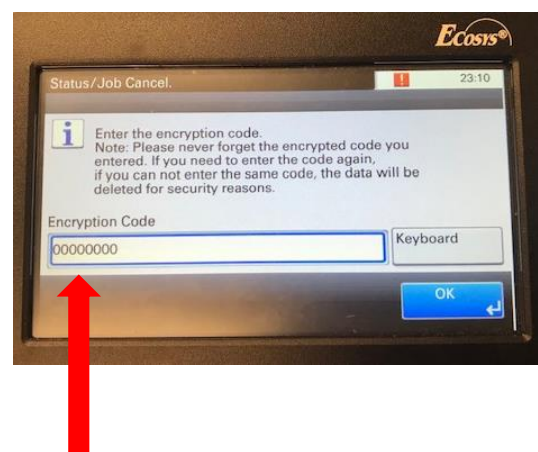


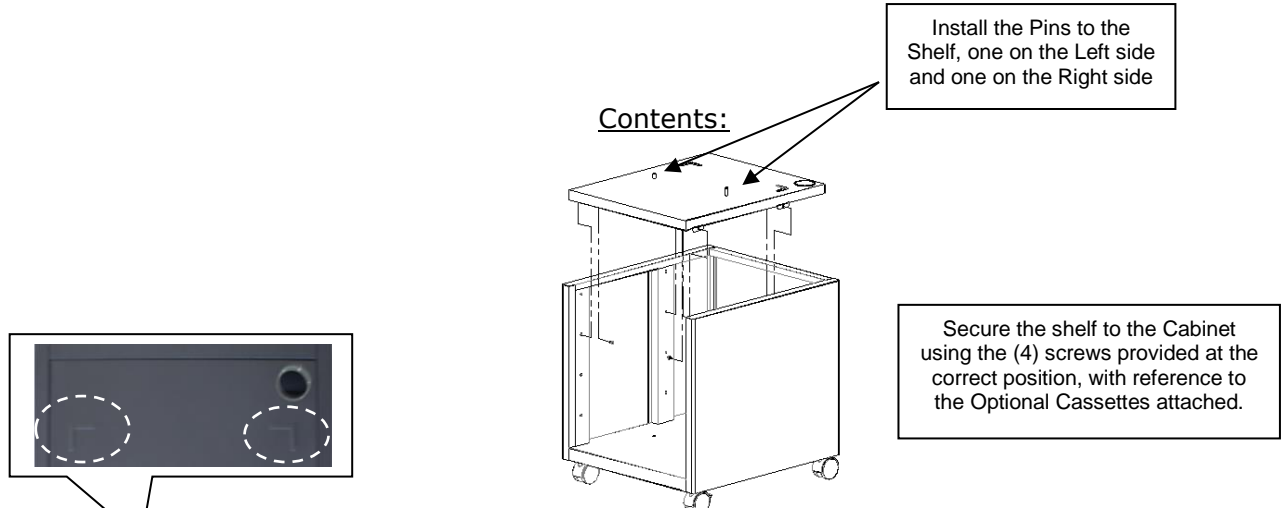
Fig. 4



## Cabinet Assembly Instructions

Item # 855D200655

Position the Shelf in the correct position with reference to the Quantity of Optional Cassettes attached to the Printer or MFP.



Attach the Shelf to the top when no Optional Cassettes are attached. **Attach the Device or Cassette onto the Pins using the raised areas as an alignment reference.**



Attach the Shelf to the second position from the top when (1) one Optional Cassette is attached.



Attach the Shelf to the third position from the top when (2) two Optional Cassettes are attached.



Attach the Shelf to the fourth position when (3) three Optional Cassettes are attached.



No Shelf is required when (4) four Optional Cassettes are attached. **Install the (2) two Pins to the bottom of the Cabinet.**



When installing multiple cassettes, stack one at a time on top of each other and then position the Printer or MFP on top. Full Configuration shown with (4) Cassettes attached.