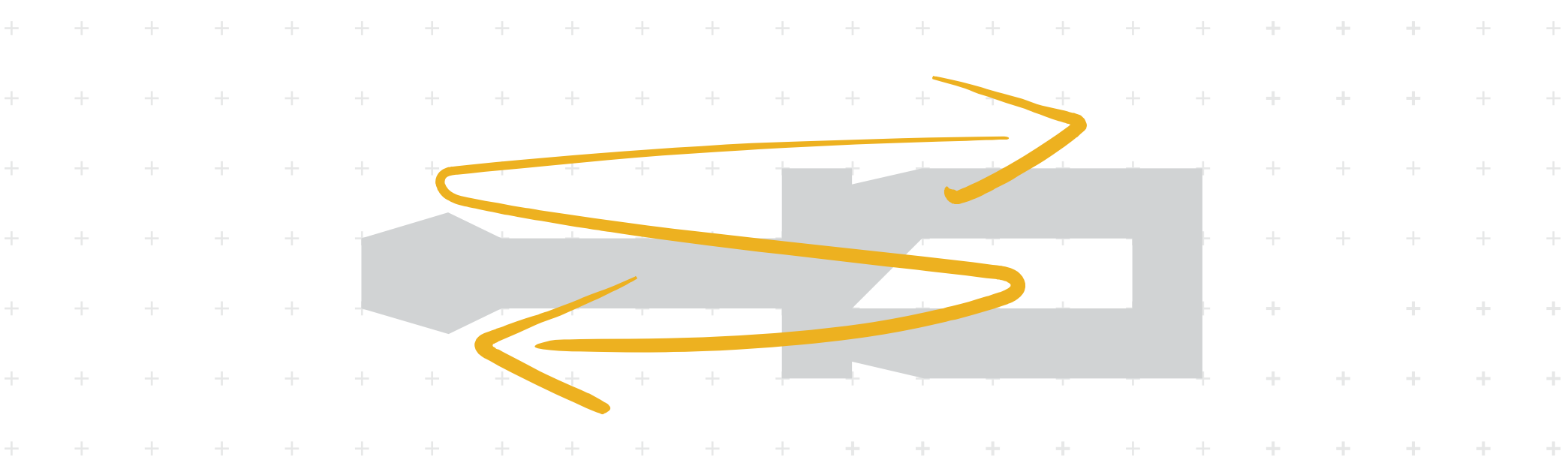


PARTS LIST

ECOSYS P3260dn

PB-325 / PF-3100 / PF-3110 / PT-320



[CONFIDENTIAL]

FOR AUTHORIZED KYOCERA ENGINEERS ONLY. DO NOT DISTRIBUTE TO NON-AUTHORIZED PARTIES.

Cover page revision history

Rev.	Date	Remarks
1	June 2019	Ordinary revision
2	December 2019	Ordinary revision
3	June 2020	Ordinary revision
4	December 2020	Ordinary revision

Individual parts list revision

	Rev.	Remarks
Main Body	4	Revised from 3 to 4
PB-325	1	
PF-3100	3	Revised from 2 to 3
PF-3110	3	Revised from 2 to 3
PT-320	First Edition	

Precautions when replacing parts

When replacing the parts, please use the parts that Kyocera Document Solutions Inc. is specified. Please do not use the unspecified parts since there might be the possibility to occur the incident such as the malfunction of the product, the fire, etc.

ECOSYS P3260dn

[CONFIDENTIAL]

FOR AUTHORIZED KYOCERA ENGINEERS ONLY. DO NOT DISTRIBUTE TO NON-AUTHORIZED PARTIES.

Items listed in the revision columns are defined as follows.

Item	Description
Add	Add a new part
Del	Delete a part
Design-chg.	A design changed part (Parts number version up)
Part No.-chg.	A part number is changed to other one.
Quantity-chg.	Change Quantity of parts to use
Others	Other changes
Correction	Correction

Revision history

Rev.	Date	Remarks
1	June 2019	Others
2	December 2019	Correction and Others
3	June 2020	Design-chg.
4	December 2020	Design-chg. and Correction

Symbols in the parts list

- Parts without a Ref.No. in the illustration indicate they are not supplied.
- Parts with a Ref.No. of 500 and above in the illustration indicate they are not selected for service parts.
- Parts with "*" are component parts or sub-assemblies of the assembly appearing immediately above them.
- Parts with "••" are component parts or sub-assembly with "*" appearing immediately above them.

———— **CONTENTS** ————

FIG. 1 Covers 2
FIG. 2 Frames 4
FIG. 3 Paper Cassette 6
FIG. 4 Paper Feed Section (Cassette/Duplex/MPF) 8
FIG. 5 Paper Conveying Section 10
FIG. 6 Image Formation Section 12
FIG. 7 Developer Section 14
FIG. 8 Fuser Section 16
FIG. 9 Exit Section 18
FIG. 10 Drive Section 20
FIG. 11 Wire Section 1 22
FIG. 12 Wire Section 2 24
FIG. 13 Accessories 26
FIG. 14 Maintenance Kits 28

FIG. 1 Covers

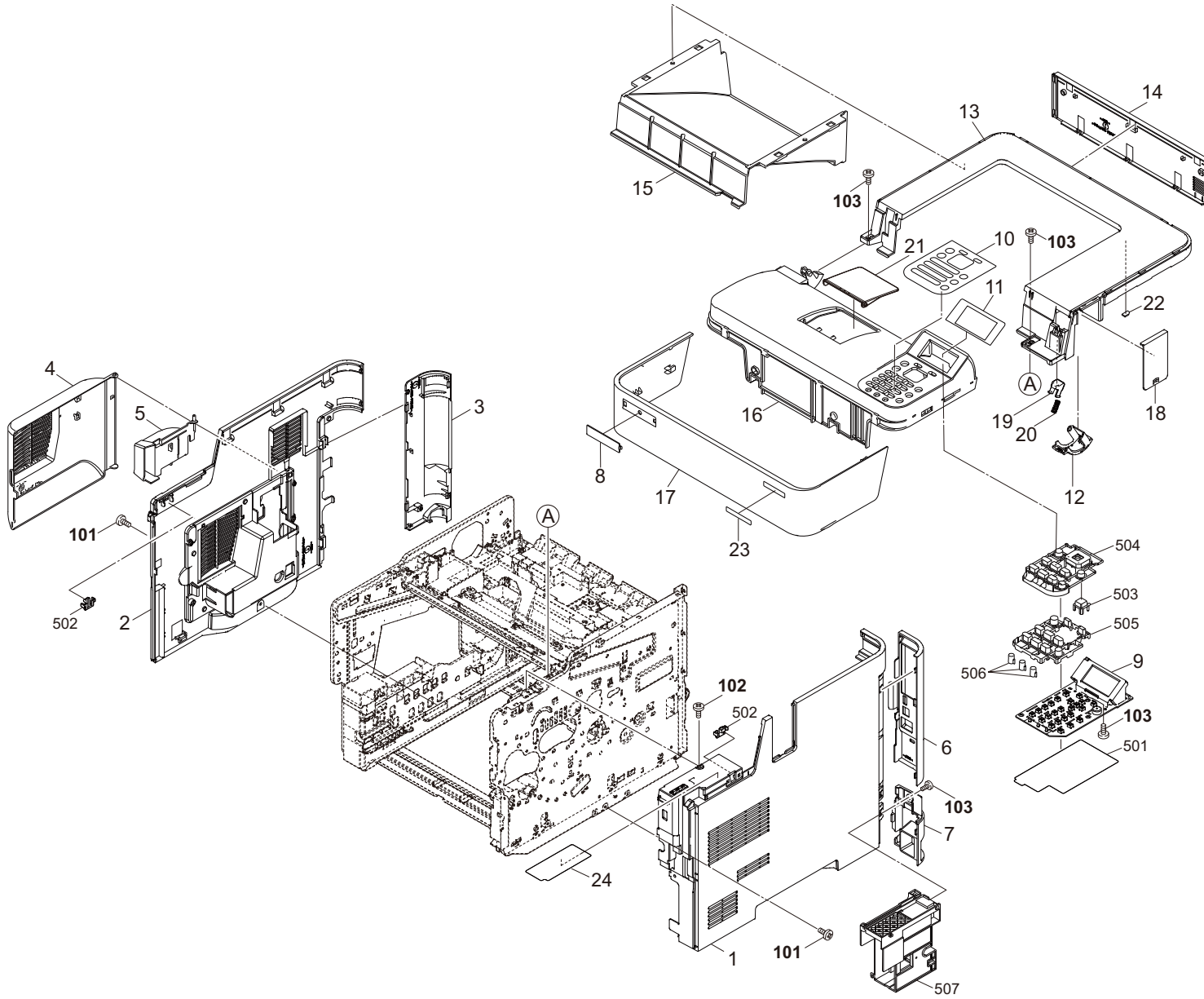


FIG. 1 Covers

Ref No.	Part.No.	Description	Notes	Revision	Quantity			
					100	120	230	240
1	302TP04070	COVER RIGHT				1	1	1
2	302TP04060	COVER LEFT				1	1	1
3	302TP04200	COVER LEFT REAR				1	1	1
4	302WD04040	COVER SIDE LEFT				1	1	1
5	302WD04060	COVER SIDE LEFT INNER				1	1	1
6	302TP04100	COVER CONTROLLER				1	1	1
7	302TP04221	COVER RIGHT REAR LOW				1	1	1
8	302S018491	EMBLEM				1	1	1
9	302TP94100	PARTS PWB ASSY PANEL SP				1	1	1
10	302WD05020	PANEL OPERATION				1	1	1
11	302WD04080	PANEL LCD				1	1	1
12	302TP04080	COVER CABLE				1	1	1
13	302TP04030	COVER TOP				1	1	1
14	302TP04180	COVER REAR TOP				1	1	1
15	302WD94010	PARTS TRAY TOP ASSY SP				1	1	1
16	302WD04020	LID TOP				1	1	1
17	302WD04030	LID TOP FRONT				1	1	1
18	302TP04160	COVER TOP B				1	1	1
19	302T604071	STOPPER LID TOP				1	1	1
20	302T604080	SPRING STOPPER LID TOP				1	1	1
21	302TP04140	PAPER STOPPER				1	1	1
22	302WF28300	SPONGE EXIT				1	1	1
23	302WD34010	SHEET MACHINE NUMBER				1	1	1
24	3V2LV34211	LABEL LEVER A		Design-chg.		1	1	1
101	7BB700308H	+BIND T.T S SCREW 3X8 SR						
102	7BB700312H	+BIND T.T S SCREW 3X12 SR						
103	7BB200308H	+BIND T.T P SCREW 3X8						

FIG. 2 Frames

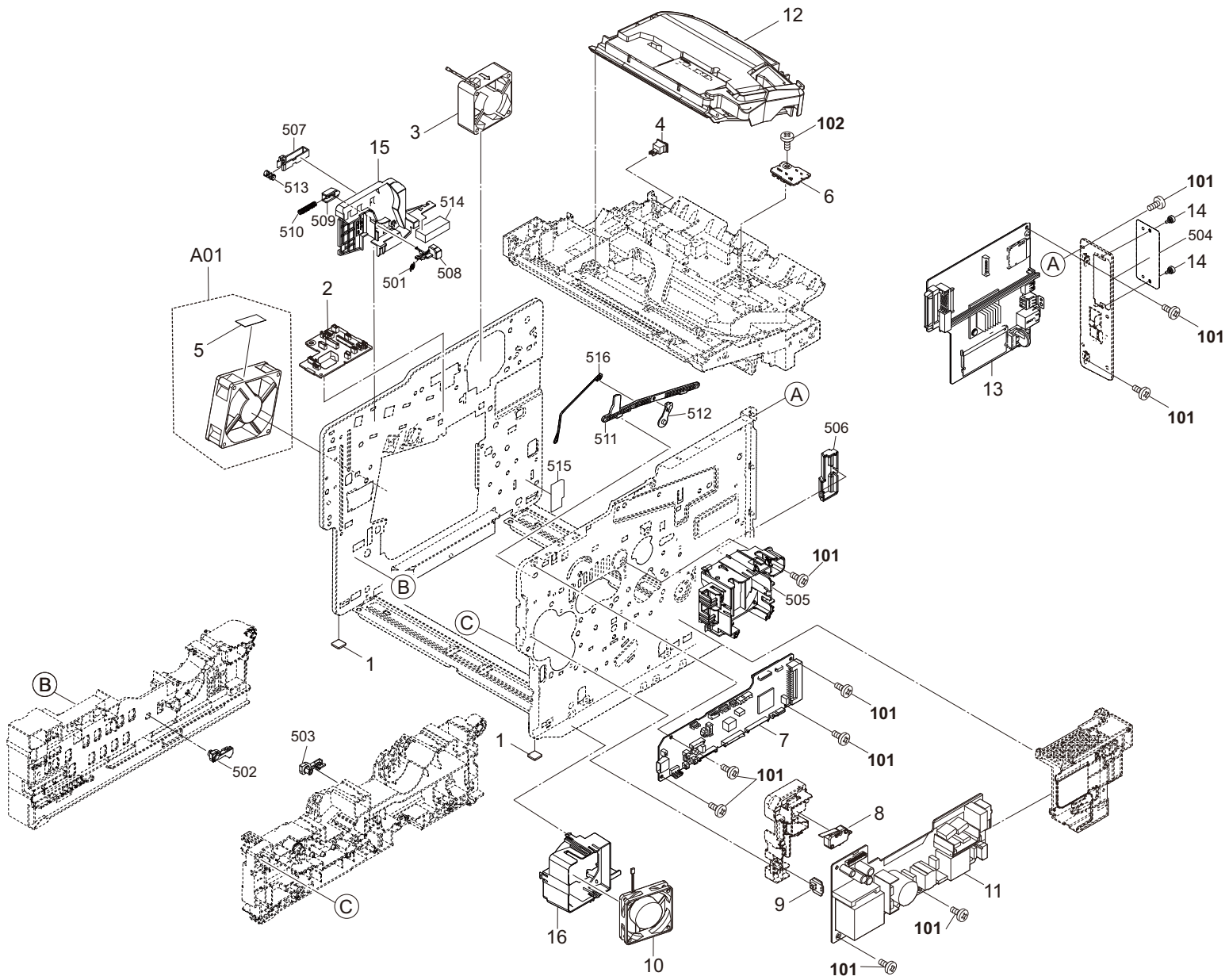


FIG. 2 Frames

Ref No.	Part.No.	Description	Notes	Revision	Quantity			
					100	120	230	240
1	302HN02611	FOOT				2	2	2
2	302T694070	PARTS PWB ASSY CONNECT-L SP				1	1	1
3	302GR44080	FAN LSU 60-25				1	1	1
4	7SP01000009+H01	SW.PUSH		Part No-chg.		1	1	1
A01	302LV94430	PARTS FAN MOTOR ASSY SP				1	1	1
5	•302LV02610	SHEET FAN L				1	1	1
6	302LV94220	PARTS PWB ASSY TH CONNECT SP				1	1	1
7	302WD94040	PARTS PWB ASSY ENGINE SP		Correction		1	1	1
8	2FB27160	INTER LOCK SWITCH				1	1	1
9	302LV94210	PARTS PWB ASSY SWITCH SP				1	1	1
10	302FZ94420	PARTS,FAN COOLING CONVEYING SP				1	1	1
11	302T694100	PARTS UNIT POWER SUPPLY 120 SP				1		
11	302T694110	PARTS UNIT POWER SUPPLY 230 SP					1	1
12	302T693011	LK-3190				1	1	1
13	302TP94080	PARTS PWB ASSY MAIN SP				1		1
13	302TP94070	PARTS PWB ASSY MAIN SP EU					1	
14	302F939082	SCREW BOX				2	2	2
15	302LV11240	GUIDE CONTAINER				1	1	1
16	3V2LV02131	DUCT FAN LV				1	1	1
101	7BB700308H	+BIND T.T S SCREW 3X8 SR						
102	7BB200410H	+BIND T.T P SCREW 4X10						

2WD

FIG. 3 Paper Cassette

Ref No.	Part.No.	Description	Notes	Revision	Quantity			
					100	120	230	240
A01	302TP93011	CT-3230				1	1	1
1	•3V2LV09311	HOLDER RETARD B				1	1	1
2	•302LV09340	GUIDE RETARD C				1	1	1
3	•302LV09330	SPRING RETARD B				1	1	1
4	•302F909171	RETARD ROLLER ASSY				1	1	1
5	•5MVG127DN071	GEAR CASSETTE /A-49 CASSETTE A4				1	1	1
6	•302LV09241	GEAR Z48S LIFT				1	1	1
7	•302LV09220	GEAR Z15S JOINT				1	1	1
8	•302LV09201	COVER LIFT GEAR				1	1	1
9	•302LV09351	CURSOR RIGHT B				1	1	1
10	•302LV09071	CURSOR LEFT				1	1	1
11	•3V2LV09090	CURSOR END				1	1	1
12	•302F909211	PAD BOTTOM				1	1	1

FIG. 4 Paper Feed Section (Cassette/Duplex/MPF)

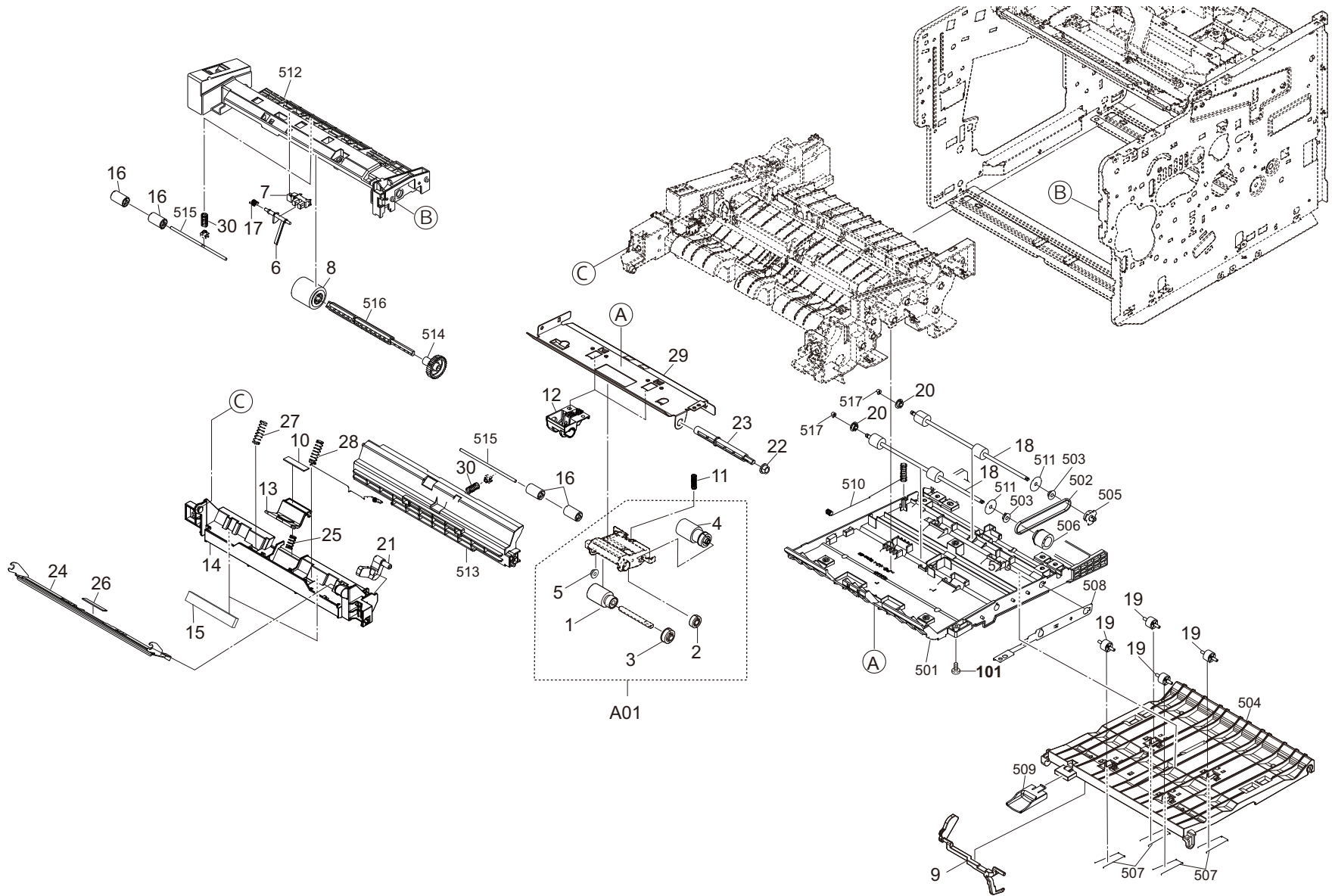


FIG. 4 Paper Feed Section (Cassette/Duplex/MPF)

2WD

Ref No.	Part.No.	Description	Notes	Revision	Quantity			
					100	120	230	240
A01	302LV94270	PARTS HOLDER FEED ASSY SP				1	1	1
1	•302F906230	PULLEY FEED ASSY				1	1	1
2	•302F906030	GEAR FEED Z26H				1	1	1
3	•302F906280	GEAR FEED Z30H				1	1	1
4	•302HN06080	PULLEY PICKUP ASSY				1	1	1
5	•302K306460	BUSH 4				1	1	1
6	302LV08180	ACTUATOR MPF				1	1	1
7	303M894260	PARTS SENSOR OPT SP				1	1	1
8	302HS08260	ROLLER M/P ASSY				1	1	1
9	302LV29090	ACTUATOR PE				1	1	1
10	302F908250	PAD SEPARATOR MPF				1	1	1
11	3V2LV06090	SPRING PICKUP B				1	1	1
12	3V2LV06030	GUIDE FEED SIDE				2	2	2
13	3V2LV08070	HOLDER SEPARATION MPF				1	1	1
14	302LV08151	GUIDE TURN MPF A				1	1	1
15	302LV08220	SHEET GUIDE TURN A				2	2	2
16	3V2LV08210	PULLEY FEED				4	4	4
17	302LV08201	SPRING ACTUATOR MPF				1	1	1
18	302LV94530	PARTS ROLLER DU ASSY SP				2	2	2
19	302LV24760	PULLEY PA				4	4	4
20	302K306460	BUSH 4				2	2	2
21	3V2LV08090	LEVER CAM MPF				1	1	1
22	302H024370	BUSH 6 EW				1	1	1
23	302F906290	SHAFT FEED R				1	1	1
24	302LV08080	PLATE BOTTOM MPF				1	1	1
25	302LV08110	SPRING SEPARATION MPF				1	1	1
26	302F908311	PAD FRICTION MPF				1	1	1
27	302LV08120	SPRING BOTTOM MPF L				1	1	1
28	302LV08130	SPRING BOTTOM MPF R				1	1	1
29	302LV06010	GUIDE FEED UP				1	1	1
30	302LV24230	SPRING MIDDLE				2	2	2
101	7BB200412H	+BIND T.T P SCREW 4X12						

FIG. 5 Paper Conveying Section

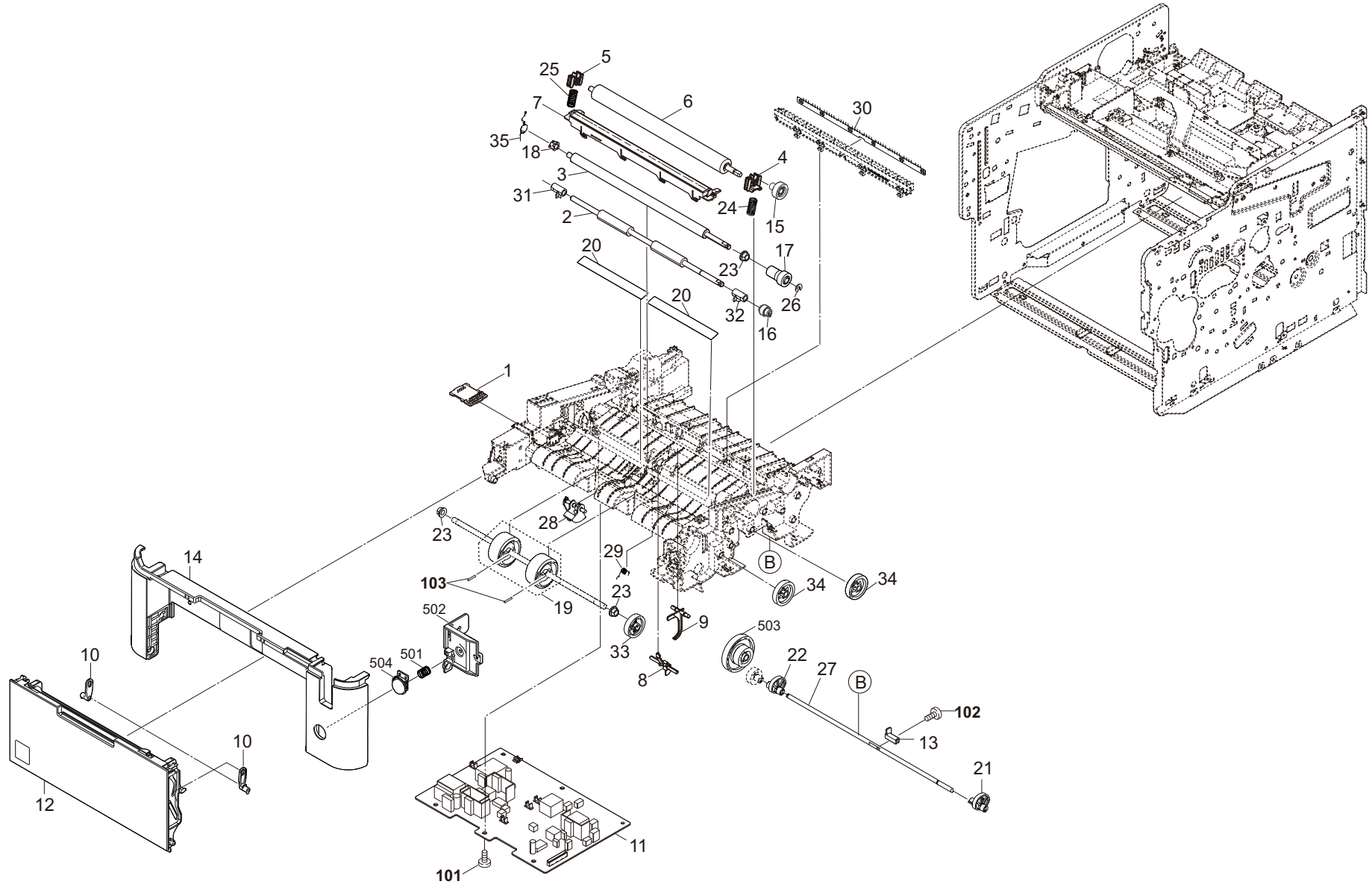


FIG. 5 Paper Conveying Section

Ref No.	Part.No.	Description	Notes	Revision	Quantity			
					100	120	230	240
1	302T694080	PARTS PWB ASSY DRUM CONNECT SP				1	1	1
2	302LV94170	PARTS ROLLER REGIST LOW SP				1	1	1
3	302LV94180	PARTS ROLLER REGIST UP SP				1	1	1
4	302F924190	BUSH TRANSFER R				1	1	1
5	302LV24360	BUSH TRANSFER L				1	1	1
6	302LV94130	PARTS ROLLER TRANSFER SP				1	1	1
7	302LV94261	PARTS GUIDE PAPER CHUTE SP				1	1	1
8	302LV24100	ACTUATOR IMAGE				1	1	1
9	3V2LV24111	ACTUATOR DU				1	1	1
10	3V2LV08100	LEVER LINK				2	2	2
11	302LV94060	PARTS HIGH VOLTAGE UNIT SP				1	1	1
12	302TP94011	PARTS COVER MPF ASSY SP				1	1	1
13	302LV24450	ACTUATOR ENVELOPE				1	1	1
14	302TP04050	COVER FRONT				1	1	1
15	302LV24140	GEAR Z22R TC				1	1	1
16	302LV24150	GEAR Z22L REGIST LOW				1	1	1
17	302LV24160	GEAR Z19R-Z22R REGIST UP				1	1	1
18	302LV24520	BUSH 6 EW				1	1	1
19	302P794090	PARTS ROLLER MIDDLE SET SP				1	1	1
20	302LV24220	SHEET REGIST				2	2	2
21	3V2LV24510	LOCK ENVELOPE R				1	1	1
22	3V2LV24440	LOCK ENVELOPE L				1	1	1
23	302H702590	BUSH SCREW				3	3	3
24	302LV24280	SPRING TRANSFER R				1	1	1
25	302LV24290	SPRING TRANSFER L				1	1	1
26	302FB09830	CUT WASHER 4				1	1	1
27	302LV24460	SHAFT ENVELOPE				1	1	1
28	3V2LV24120	LEVER EMPTY				1	1	1
29	302LV24420	SPRING IMAGE SENSOR				1	1	1
30	302LV24060	BRUSH DC CHARGE				1	1	1
31	302LV24350	BUSH REGIST LOW L				1	1	1
32	302LV24530	BUSH REGIST LOW R				1	1	1
33	3V2LV24130	GEAR Z32L MIDDLE				1	1	1
34	3V2LV31080	GEAR Z35L				2	2	2
35	302LV24660	SPRING EARTH REG B				1	1	1
101	7BB200412H	+BIND T.T P SCREW 4X12						
102	7BB000304H	+BIND M SCREW 3X4						
103	5MBP2012WPLD	PARALLEL PIN / M2 X 12 SUS-DP						

FIG. 6 Image Fomation Section

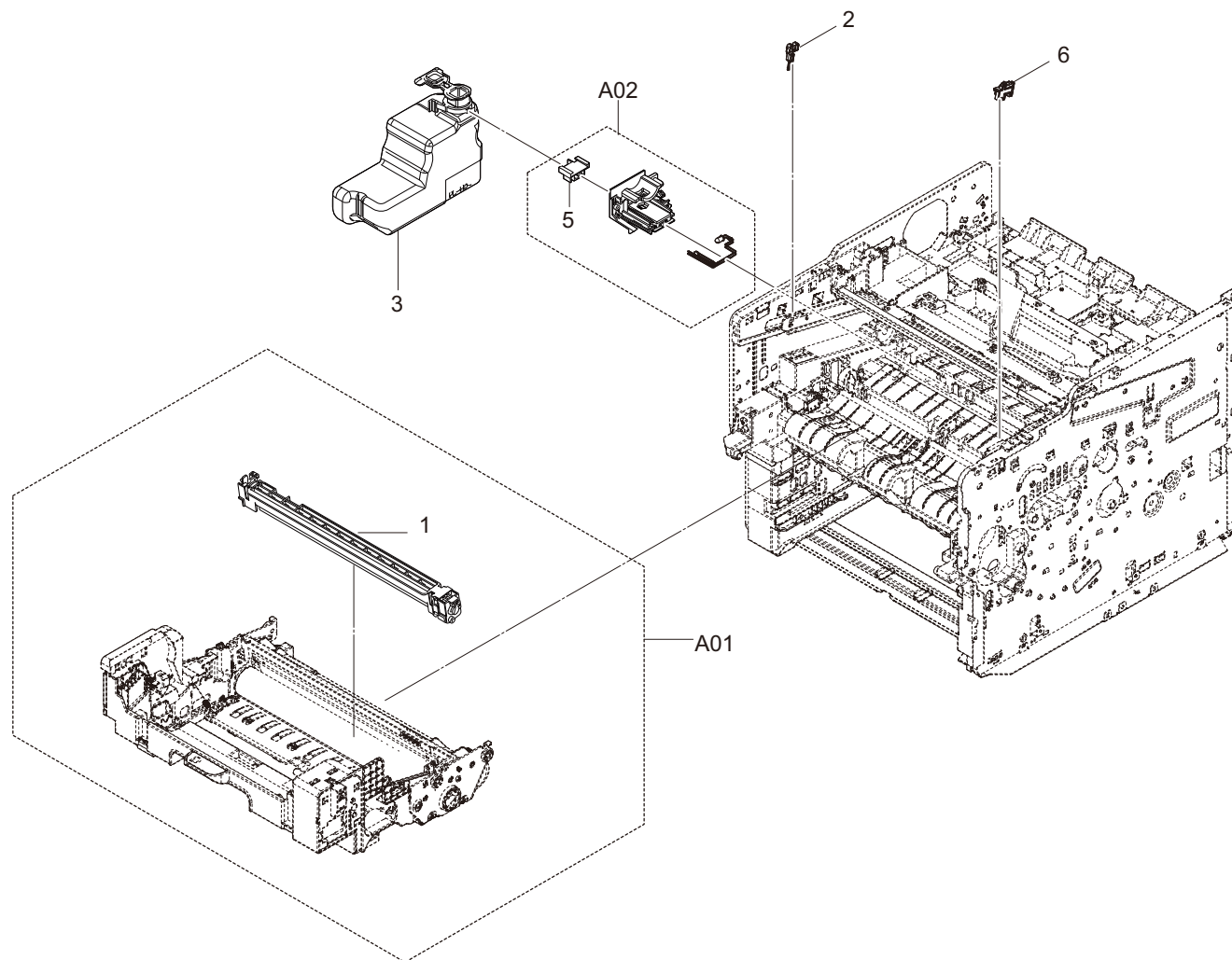


FIG. 7 Developing Section

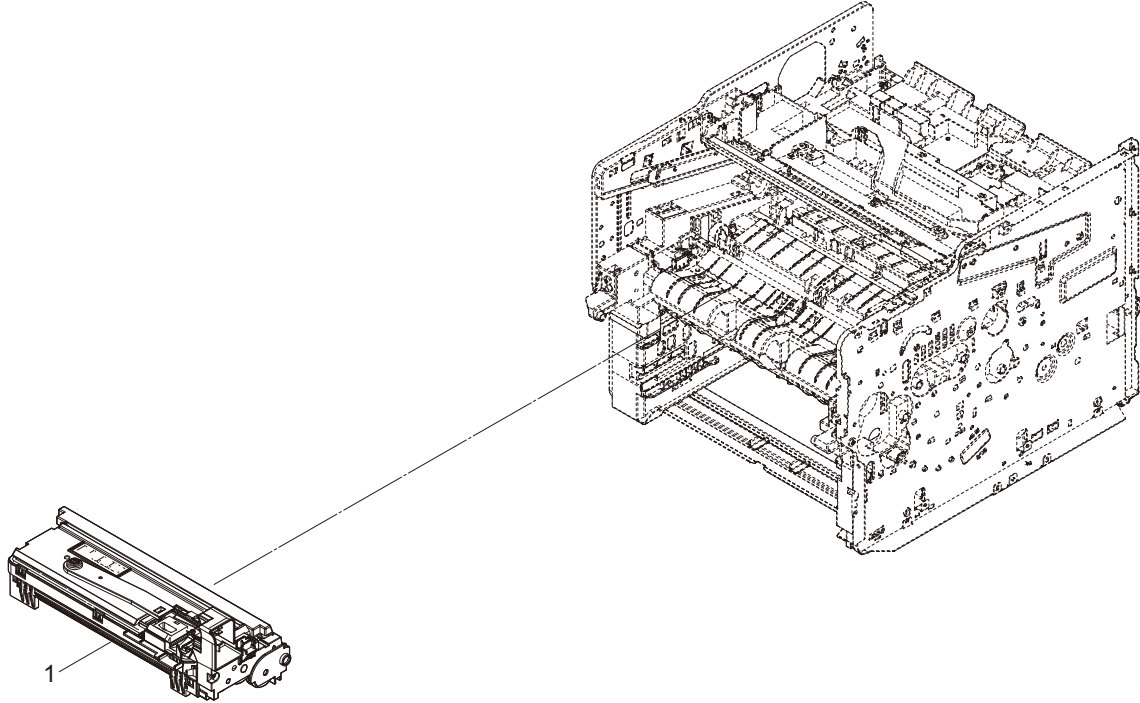


FIG. 7 Developing Section

2WD

Ref No.	Part.No.	Description	Notes	Revision	Quantity			
					100	120	230	240
1	302LV93081	DV-3100				1	1	1

FIG. 8 Fuser_Section

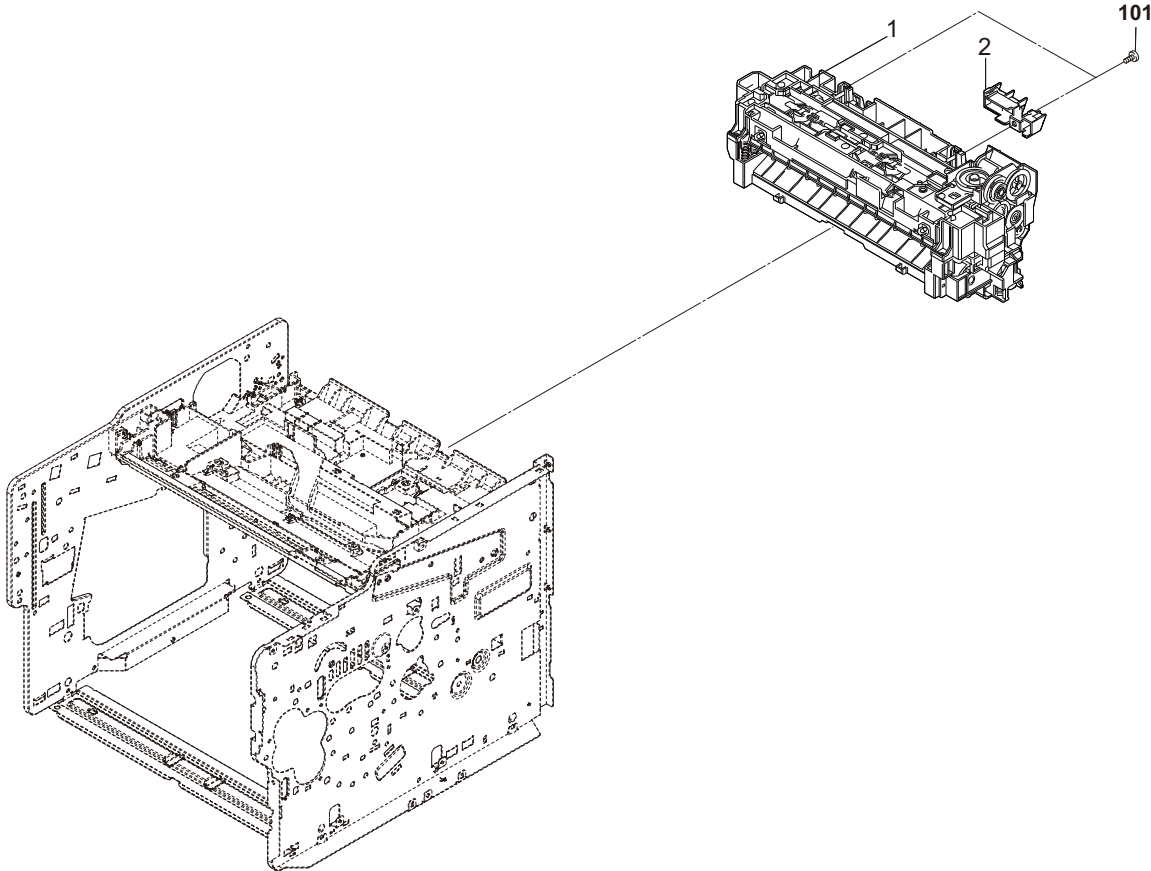


FIG. 8 Fuser_Section

Ref No.	Part.No.	Description	Notes	Revision	Quantity			
					100	120	230	240
1	302TA93052	FK-3302		Design-chg.		1		
1	302TA93041	FK-3300		Design-chg.			1	1
2	3V2LV02990	COVER SENSOR				1	1	1
101	7BB200412H	+BIND T.T P SCREW 4X12						

FIG. 9 Exit_section

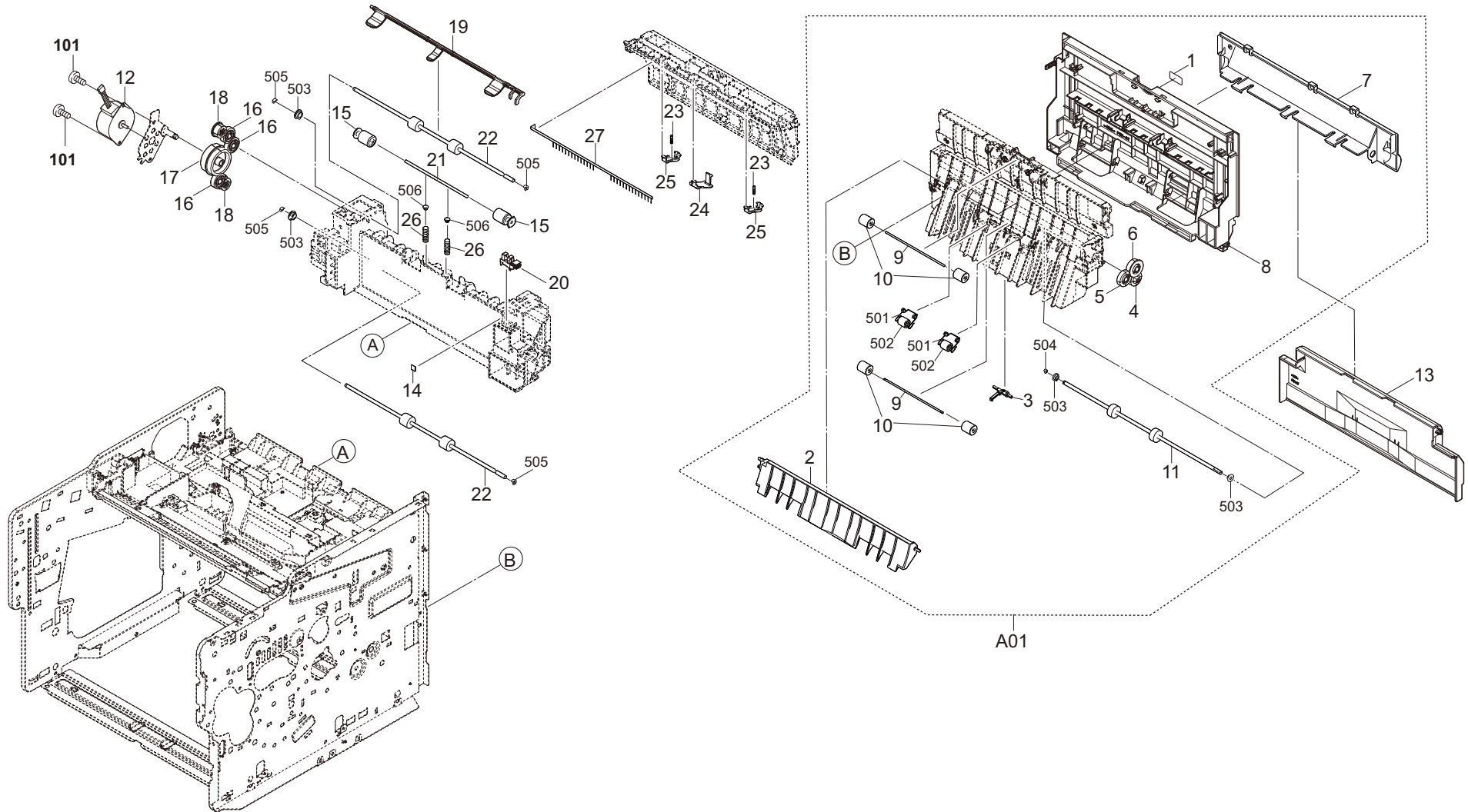


FIG. 9 Exit_section

Ref No.	Part.No.	Description	Notes	Revision	Quantity			
					100	120	230	240
A01	302TP94020	PARTS COVER REAR ASSY SP				1	1	1
1	•302MC34040	LABEL PUSH				1	1	1
2	•3V2LV28081	GUIDE CHANGE				1	1	1
3	•3V2LV28070	ACTUATOR DU				1	1	1
4	•302LV28090	GEAR Z20S				1	1	1
5	•302LV28191	GEAR Z22S B				1	1	1
6	•302LV28100	GEAR Z22S A				1	1	1
7	•302TP04210	COVER REAR LOW				1	1	1
8	•302LV04100	COVER REAR UP				1	1	1
9	•3V2LV28270	SHAFT EXIT LOW				2	2	2
10	•302K325320	PULLEY EXIT FUSER				4	4	4
11	•302WD94020	PARTS ROLLER REAR SP				1	1	1
12	302T994050	PARTS MOTOR EJECT SP				1	1	1
13	302TP04230	COVER CASSETTE				1	1	1
14	302LV28461	SEAL EXIT C				1	1	1
15	3V2LV28150	PULLEY EXIT				2	2	2
16	302LV28050	GEAR Z22S				3	3	3
17	302LV28031	GEAR Z66R-Z40S				1	1	1
18	302LV28040	GEAR Z17S				2	2	2
19	302LV28141	ACTUATOR OVERFLOW				1	1	1
20	302P794010	PARTS SENSOR OPT SP				1	1	1
21	3V2LV28360	SHAFT EXIT				1	1	1
22	3V2LV28120	ROLLER FD UP				2	2	2
23	3V2LV28400	SPRING GUIDE FD				2	2	2
24	3V2LV28180	GUIDE FD A				1	1	1
25	3V2LV28352	GUIDE FD B				2	2	2
26	3V2LV28200	SPRING PULLEY EXIT				2	2	2
27	3V2LV28160	DISCHARGER FD				1	1	1
101	7BB200308H	+BIND T.T P SCREW 3X8						

FIG. 10 Drive section

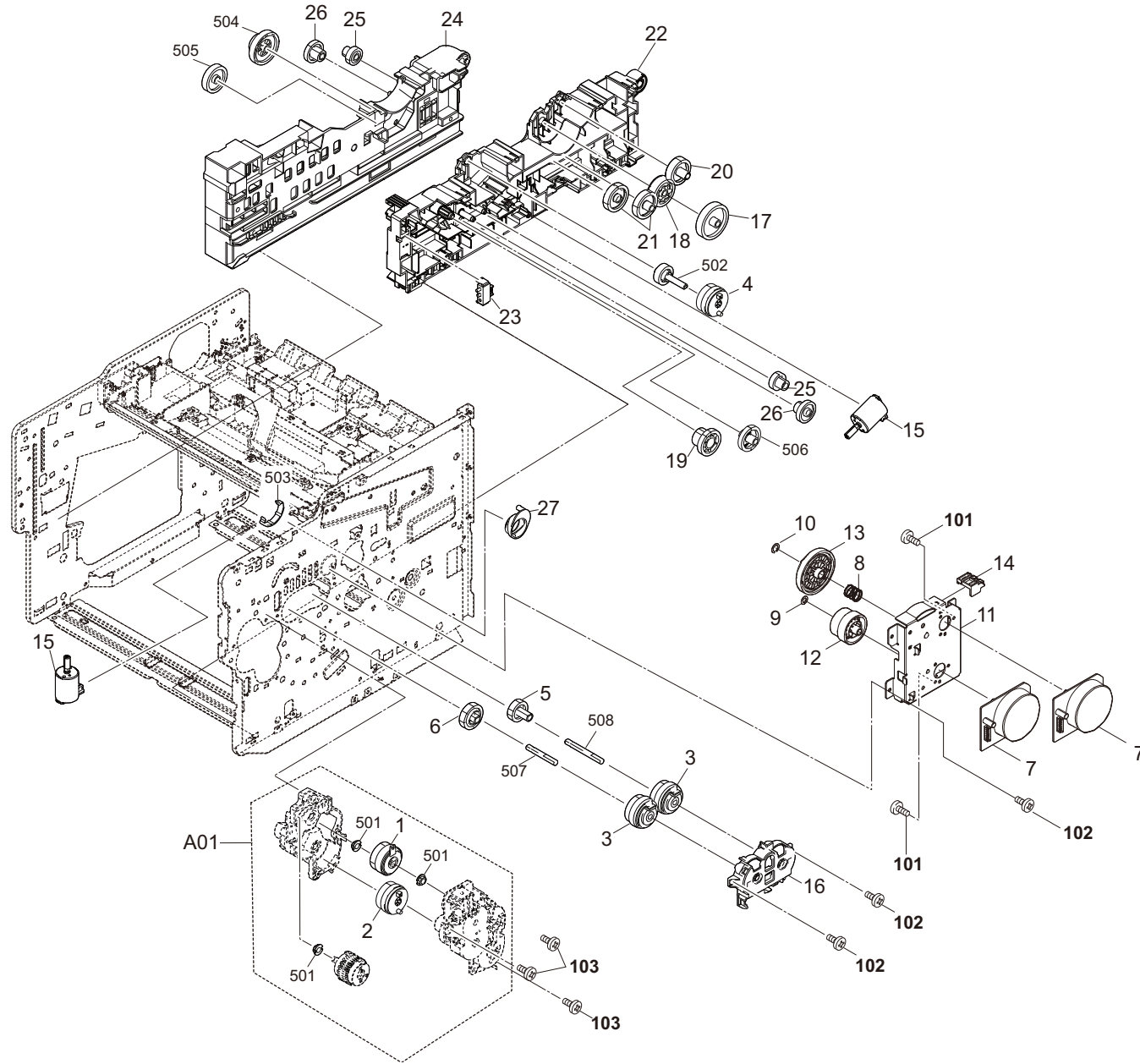


FIG. 10 Drive section

2WD

Ref No.	Part.No.	Description	Notes	Revision	Quantity			
					100	120	230	240
A01	302LV94253	PARTS DRIVE FEED ASSY SP				1	1	1
1	•302NR94010	PARTS CLUTCH 35 Z35R SP				1	1	1
2	•302LV94161	PARTS CLUTCH 20-2W Z35R				1	1	1
3	302KV94520	PARTS CLUTCH 50 Z35R SP				2	2	2
4	302LV94161	PARTS CLUTCH 20-2W Z35R				1	1	1
5	302LV31180	GEAR Z26L DLP CLUTCH				1	1	1
6	302LV31440	GEAR Z32L REG CL				1	1	1
7	302K394202	PARTS MOTOR-BL W30 SP				2	2	2
8	302LV31290	SPRING COUPLING DRUM				1	1	1
9	2C904550	CUT WASHER 5				1	1	1
10	302K914570	CUT WASHER 7				1	1	1
11	302LV31010	PLATE DRIVE				1	1	1
12	302LV31060	GEAR Z80R-Z36L				1	1	1
13	302LV31050	GEAR Z119R				1	1	1
14	302LV39040	RAIL PWB MAIN B				1	1	1
15	302LV94230	PARTS DC MOTOR ASSY SP				2	2	2
16	3V2P702110	HOLDER CLUTCH				1	1	1
17	3V2LV31120	GEAR Z46L FREE				1	1	1
18	3V2LV31130	GEAR Z37S FREE				1	1	1
19	3V2LV31490	GEAR Z35S-Z13S B				1	1	1
20	302HN25180	GEAR Z34S INPUT				1	1	1
21	302HS31140	GEAR Z35R IDLE				2	2	2
22	3V2LV02043	GUIDE CASSETTE R				1	1	1
23	7SP03072001+H01	SW.PUSH				1	1	1
24	3V2LV02051	GUIDE CASSETTE L				1	1	1
25	302HN31030	GEAR Z36L-Z20S				2	2	2
26	302HN31040	GEAR Z46S-Z13S				2	2	2
27	3V2LV31300	LEVER COUPLING DRUM				1	1	1
101	7BB000304H	+BIND M SCREW 3X4						
102	7BB700308H	+BIND T.T S SCREW 3X8 SR						
103	7BB700312H	+BIND T.T S SCREW 3X12 SR						

FIG. 11 Wire Section 1

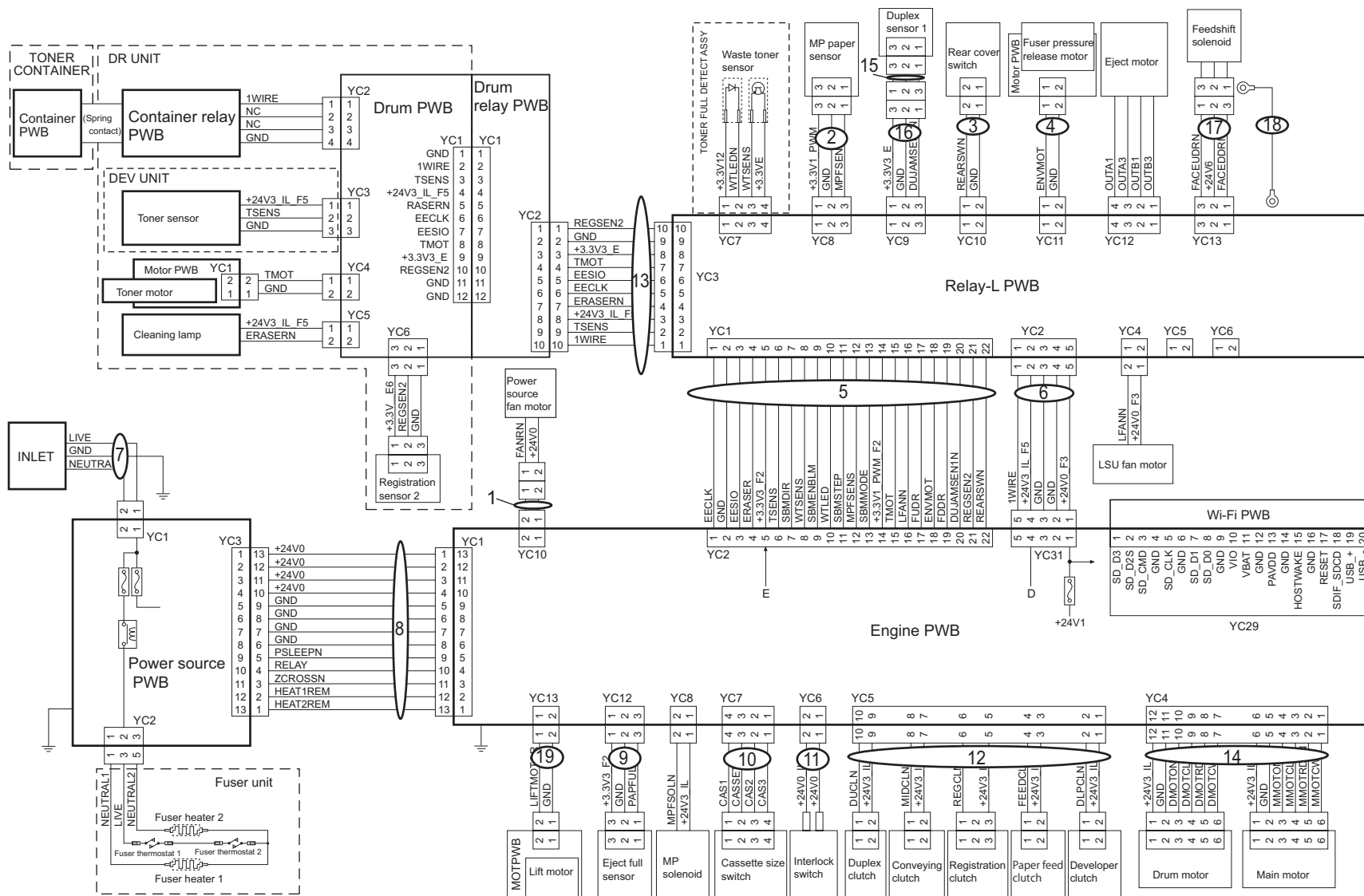
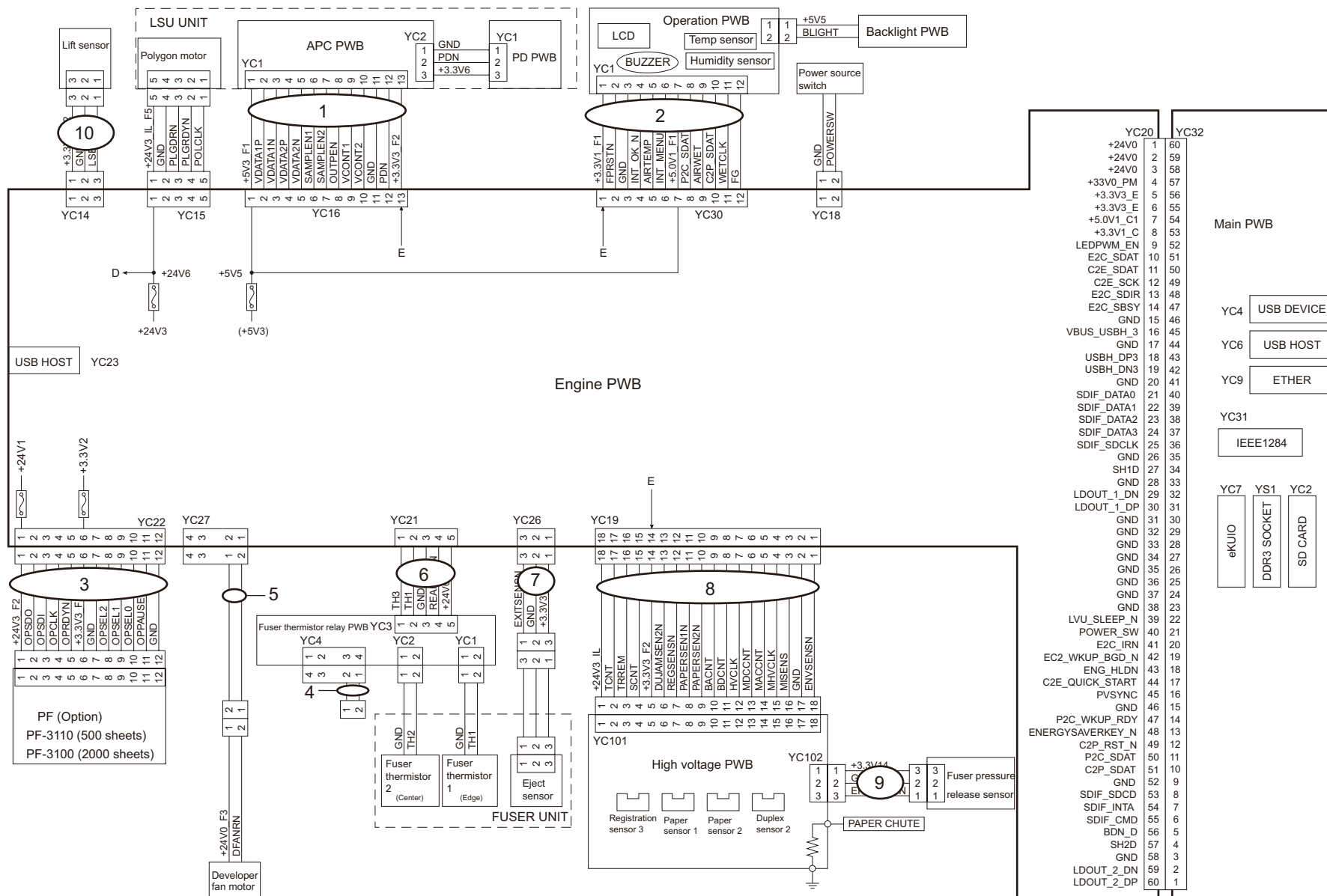


FIG. 12 Wire Section 2



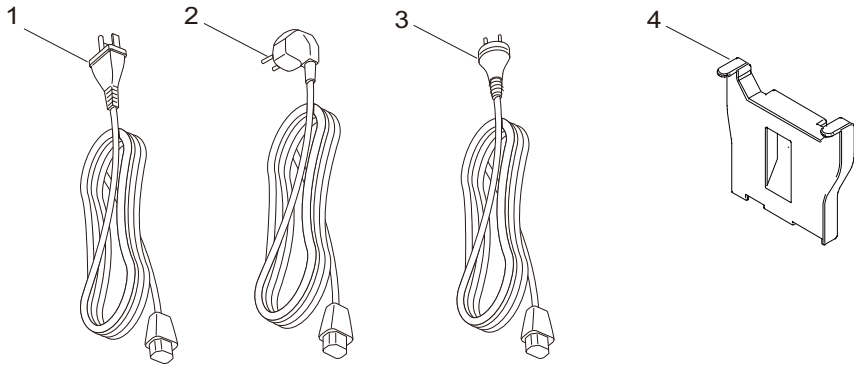


FIG. 14 Maintenance Kits

2WD

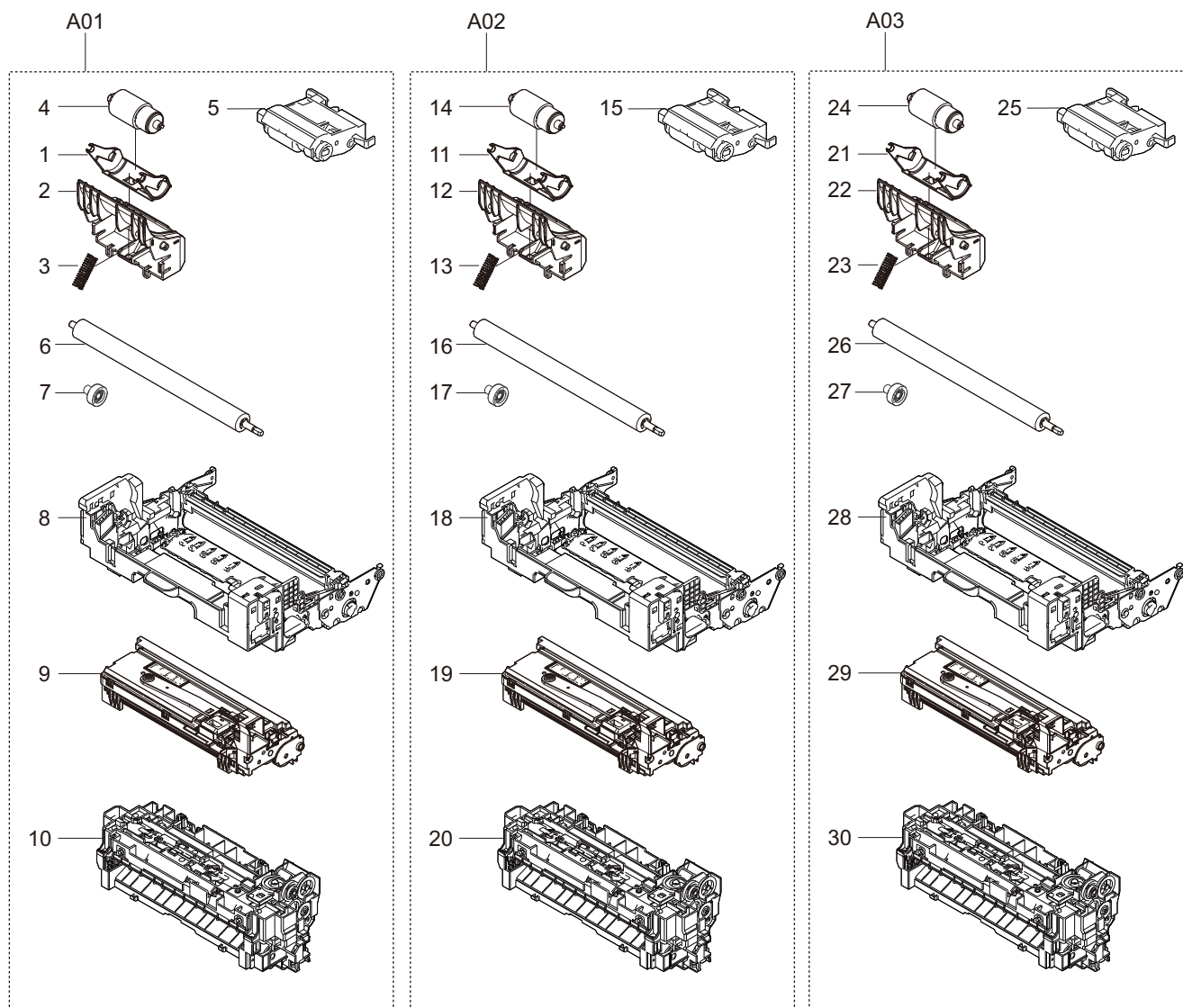


FIG. 14 Maintenance Kits

Ref No.	Part.No.	Description	Notes	Revision	Quantity			
					100	120	230	240
A01	1702TA7US0	MK-3302/MAINTENANCE KIT	OPTION			1		
1	•3V2LV09311	HOLDER RETARD B				1		
2	•302LV09340	GUIDE RETARD C				1		
3	•302LV09330	SPRING RETARD B				1		
4	•302F909171	RETARD ROLLER ASSY				1		
5	•302LV94270	PARTS HOLDER FEED ASSY SP				1		
6	•302LV94130	PARTS ROLLER TRANSFER SP				1		
7	•302LV24140	GEAR Z22R TC				1		
8	•302T693041	DK-3192(U)				1		
9	•302LV93081	DV-3100				1		
10	•302TA93052	FK-3302		Design-chg.		1		
A02	1702TA8NL0	MK-3300/MAINTENANCE KIT	OPTION				1	
11	•3V2LV09311	HOLDER RETARD B					1	
12	•302LV09340	GUIDE RETARD C					1	
13	•302LV09330	SPRING RETARD B					1	
14	•302F909171	RETARD ROLLER ASSY					1	
15	•302LV94270	PARTS HOLDER FEED ASSY SP					1	
16	•302LV94130	PARTS ROLLER TRANSFER SP					1	
17	•302LV24140	GEAR Z22R TC					1	
18	•302T693031	DK-3190(E)					1	
19	•302LV93081	DV-3100					1	
20	•302TA93041	FK-3300		Design-chg.			1	
A03	1702TA8AS0	MK-3304/MAINTENANCE KIT	OPTION					1
21	•3V2LV09311	HOLDER RETARD B						1
22	•302LV09340	GUIDE RETARD C						1
23	•302LV09330	SPRING RETARD B						1
24	•302F909171	RETARD ROLLER ASSY						1
25	•302LV94270	PARTS HOLDER FEED ASSY SP						1
26	•302LV94130	PARTS ROLLER TRANSFER SP						1
27	•302LV24140	GEAR Z22R TC						1
28	•302T693061	DK-3194(AO)						1
29	•302LV93081	DV-3100						1
30	•302TA93041	FK-3300		Design-chg.				1

PB-325

[CONFIDENTIAL]

FOR AUTHORIZED KYOCERA ENGINEERS ONLY. DO NOT DISTRIBUTE TO NON-AUTHORIZED PARTIES.

Items listed in the revision columns are defined as follows.

Item	Description
Add	Add a new part
Del	Delete a part
Design-chg.	A design changed part (Parts number version up)
Part No.-chg.	A part number is changed to other one.
Quantity-chg.	Change Quantity of parts to use
Others	Other changes
Correction	Correction

Revision history

Rev.	Date	Remarks
1	July 2017	Design change

Symbols in the parts list

- Parts without a Ref.No. in the illustration indicate they are not supplied.
- Parts with a Ref.No. of 500 and above in the illustration indicate they are not selected for service parts.
- Parts with "*" are component parts or sub-assemblies of the assembly appearing immediately above them.
- Parts with "**" are component parts or sub-assembly with "*" appearing immediately above them.

[CONFIDENTIAL]

京セラドキュメントソリューションズ株式会社の許可なく、本資料を配布することを禁じます。

Revision 欄記載項目の内容は以下の通りです。

記載項目	内容
Add	新規部品の追加
Del	部品の削除
Design-chg.	部品の設変(版数アップ)
Part No.-chg.	部品番号の変更
Quantity-chg.	部品の個数変更
Others	その他の変更
Correction	誤記訂正

改版履歴

Rev.	改訂日	備考
1	2018年7月	設変対応

記号の見方

イラスト中で Ref 番号がない部品は供給できません。
 イラスト中で 500 番台の Ref 番号が付いている部品はサービスパーツに
 選定されていません。
 部品番号欄の・印は、組立部品の単品部品及び準組立部品を表わします。
 部品番号欄の**印は、準組立部品の単品部品を表わします。

—— CONTENTS ——

FIG. 1 PB-325 2

FIG. 1 PB-325

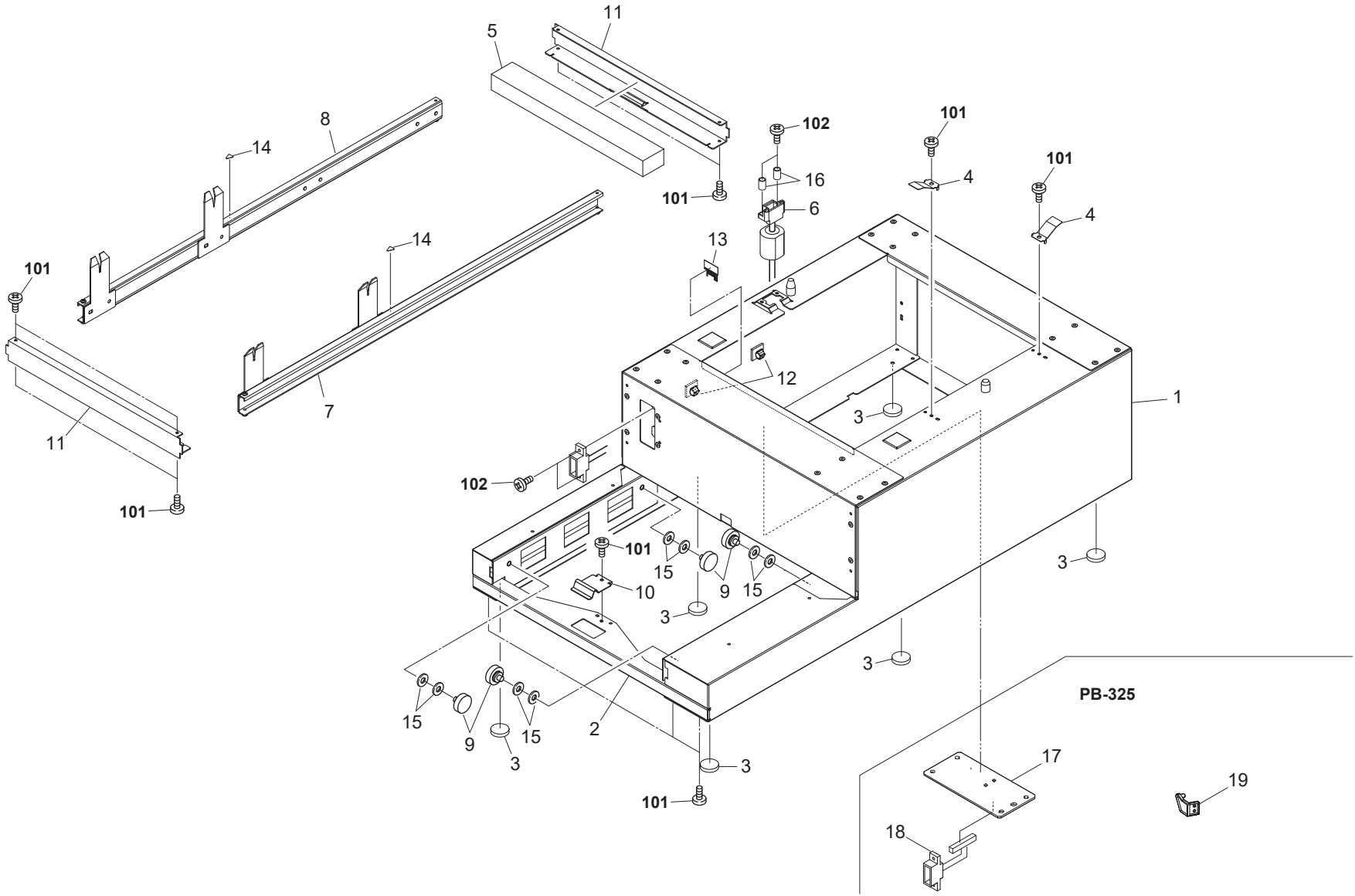


FIG. 1 PB-325

3N1-1

Ref No.	Part.No.	Description	Notes	Revision	Quantity			
					100	120	230	240
1	303N100030	BASE ASSY			1	1	1	1
2	303N110100	STAY MAIN			1	1	1	1
3	303KT10100	FOOT			6	6	6	6
4	303N110170	PLATE EARTH STAY			2	2	2	2
5	303KT10120	PAD RAIL			1	1	1	1
6	303N146010	CONN.CORD ASSY S03798			1	1	1	1
7	303KT00060	RAIL R ASSY			1	1	1	1
8	303KT00050	RAIL L ASSY			1	1	1	1
9	5AAZPF7A++01	ROLLER DL			4	4	4	4
10	5MMP153LD001	STOPPER PF			1	1	1	1
11	303N110110	STAY RAIL			2	2	2	2
12	7YZM390007++H01	ACCESS.CLAMP			5	5	5	5
13	303N110120	DISCHARGER PB			1	1	1	1
14	303N110150	LABEL LEVER			2	2	2	2
15	7BC00060D0A+H01	WASHER M6X13X1T			8	8	8	8
16	7BC300304060H01	COLLAR SPACER A /3X4X6			2	2	2	2
17	303N194010	PARTS PWB ASSY PB SP			1	1	1	1
18	303N146020	CONN.CORD ASSY S03799			1	1	1	1
19	303N110160	STOPPER CAM		Add	1	1	1	1
101	5MBTPB3006TW++R	BIND T.T SCREW(+) / M3 X 6 CRFREE S-T						
102	5MBTPB3012TW++R	BIND T.T SCREW(+) / M3 X 12 CRFREE S-T						

PF-3100

[CONFIDENTIAL]

FOR AUTHORIZED KYOCERA ENGINEERS ONLY. DO NOT DISTRIBUTE TO NON-AUTHORIZED PARTIES.

Items listed in the revision columns are defined as follows.

Item	Description
Add	Add a new part
Del	Delete a part
Design-chg.	A design changed part (Parts number version up)
Part No.-chg.	A part number is changed to other one.
Quantity-chg.	Change Quantity of parts to use
Others	Other changes
Correction	Correction

Revision history

Rev.	Date	Remarks
2	October 2018	Design change
3	December 2020	Design change

Symbols in the parts list

- Parts without a Ref.No. in the illustration indicate they are not supplied.
- Parts with a Ref.No. of 500 and above in the illustration indicate they are not selected for service parts.
- Parts with "*" are component parts or sub-assemblies of the assembly appearing immediately above them.
- Parts with "**" are component parts or sub-assembly with "*" appearing immediately above them.

[CONFIDENTIAL]

京セラドキュメントソリューションズ株式会社の許可なく、本資料を配布することを禁じます。

Revision 欄記載項目の内容は以下の通りです。

記載項目	内容
Add	新規部品の追加
Del	部品の削除
Design-chg.	部品の設変(版数アップ)
Part No.-chg.	部品番号の変更
Quantity-chg.	部品の個数変更
Others	その他の変更
Correction	誤記訂正

改版履歴

Rev.	改訂日	備考
2	2018年10月	設変対応
3	2020年12月	設変対応

記号の見方

- イラスト中で Ref 番号がない部品は供給できません。
 イラスト中で 500 番台の Ref 番号が付いている部品はサービスパーツに
 選定されていません。
 部品番号欄の・印は、組立部品の単品部品及び準組立部品を表わします。
 部品番号欄の**印は、準組立部品の単品部品を表わします。

—— CONTENTS ——

FIG. 1 PF-3100 2

FIG. 1 PF-3100

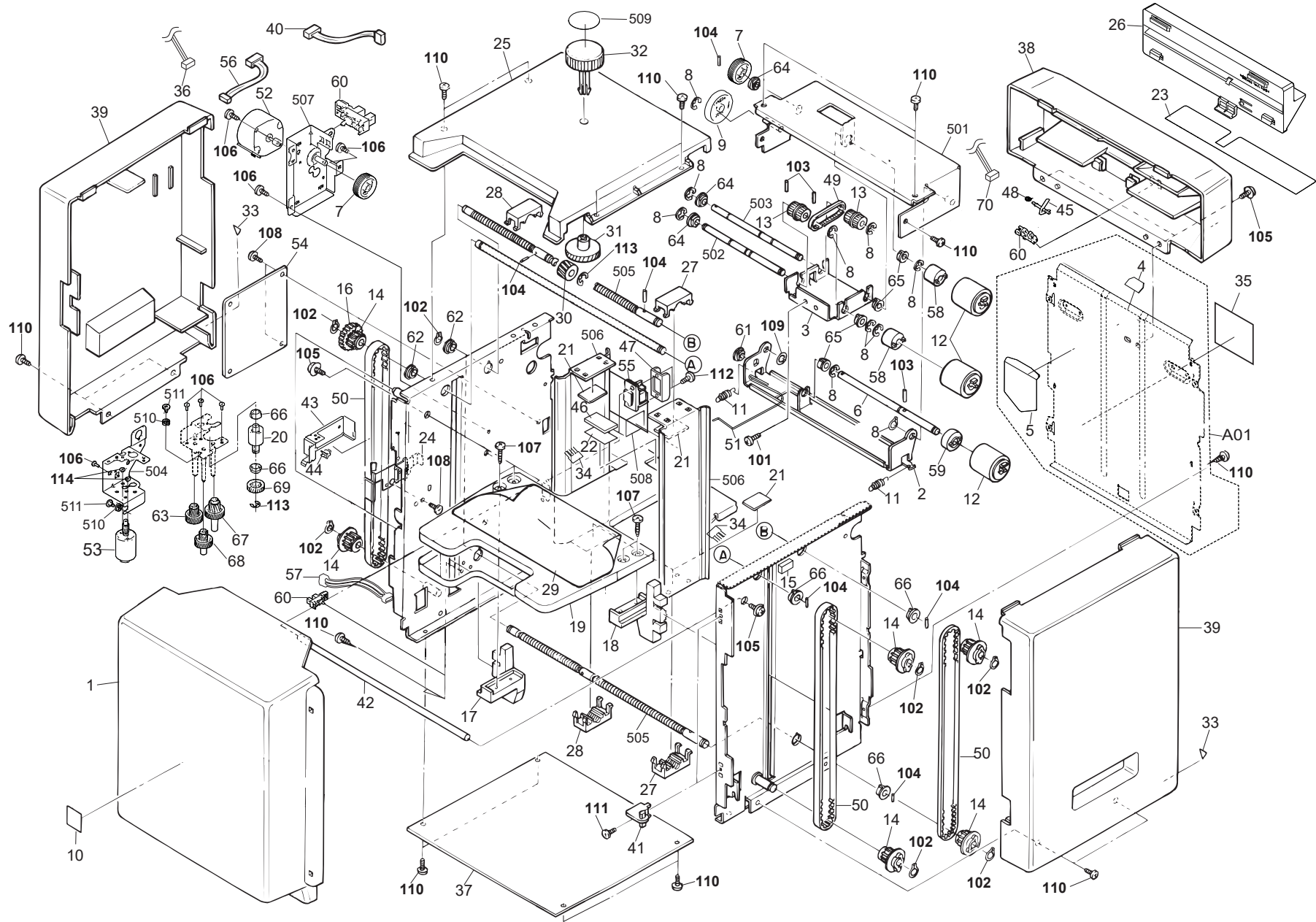


FIG. 1 PF-3100

3S3-3

Ref No.	Part.No.	Description	Notes	Revision	Quantity			
					100	120	230	240
1	303S304030	COVER TRAY			1	1	1	1
2	303KF10050	FRAME FEED LOW			1	1	1	1
3	303KF10040	BKT PICK			1	1	1	1
A01	303S394010	PARTS STAY FRONT ASSY SP			1	1	1	1
4	*303KF10170	PAD FRONT SEP			1	1	1	1
5	*303KF10180	SHEET FRONT SEP			1	1	1	1
6	303S306050	SHAFT FEED LOW			1	1	1	1
7	303S331050	GEAR Z56R			2	2	2	2
8	5MVX111DN003	RING STOPPER/A-49 FEED A4			10	10	10	10
9	303S331020	GEAR Z77L			1	1	1	1
10	303KF04090	SEAL TRAY			1	1	1	1
11	303KF10160	SPRING FEED/AE116 A4			2	2	2	2
12	5AAMPF7A++03	ROLLER ASSY			3	3	3	3
13	5MVG337DN002	PULLY P20-P21			2	2	2	2
14	5MVG318DN001	PULLEY XL14			6	6	6	6
15	303KF10140	SPACER			1	1	1	1
16	5MVG138DN018	GEAR WHEEL H30			1	1	1	1
17	5MVX665DN001	GUIDE ELEVATOR R			1	1	1	1
18	5MVX665DN002	GUIDE ELEVATOR L			1	1	1	1
19	303KF10060	TABLE PAPER			1	1	1	1
20	5MVG117DN001	GEAR WORM			1	1	1	1
21	303S310030	ADAPTER NUT			4	4	4	4
22	303S310050	SPACER PAD			1	1	1	1
23	303KF06010	SHEET EXIT			1	1	1	1
24	303S331130	ACTUATOR TRAY DOWN			1	1	1	1
25	303S304020	COVER TOP			1	1	1	1
26	303S304040	COVER FEED 2			1	1	1	1
27	5MVX422DN002	NUT GUIDE R			2	2	2	2
28	5MVX422DN003	NUT GUIDE L			2	2	2	2
29	303S334020	LABEL ADJUST			1	1	1	1
30	5MVG127DN030	GEAR H15-R			1	1	1	1
31	5MVG134DN001	GEAR H30-R			1	1	1	1
32	303S304050	KNOB SIZE			1	1	1	1
33	5MVVL111WN02	LEVER LABEL			2	2	2	2
34	303KF04120	DISCHARGER TP			2	2	2	2
35	5MVVL665WN01	LABEL HAND CAUTION			1	1	1	1
36	303S346030	CONN.CORD ASSY MOTOR FEED			1	1	1	1
37	303KF10110	PLATE BOTTOM			1	1	1	1
38	303S304060	COVER FEED			1	1	1	1
39	303KF04051	COVER SIDE			2	2	2	2
40	303S346050	CONN.CORD ASSY UPLIMIT			1	1	1	1
41	5MVX332DN002	PIVOT TRAY			2	2	2	2
42	5MMT866SN016	SHAFT STAY F			1	1	1	1
43	303S302050	BRACKET SWITCH			1	1	1	1
44	7SP01000009+H01	SW.PUSH		Part No-chg.	1	1	1	1
45	303S306020	ACTUATOR FEED			1	1	1	1

PF-3110

[CONFIDENTIAL]

FOR AUTHORIZED KYOCERA ENGINEERS ONLY. DO NOT DISTRIBUTE TO NON-AUTHORIZED PARTIES.

Items listed in the revision columns are defined as follows.

Item	Description
Add	Add a new part
Del	Delete a part
Design-chg.	A design changed part (Parts number version up)
Part No.-chg.	A part number is changed to other one.
Quantity-chg.	Change Quantity of parts to use
Others	Other changes
Correction	Correction

Revision history

Rev.	Date	Remarks
1	December 2018	Design change
2	June 2019	Design change
3	December 2020	Design change

Symbols in the parts list

- Parts without a Ref.No. in the illustration indicate they are not supplied.
- Parts with a Ref.No. of 500 and above in the illustration indicate they are not selected for service parts.
- Parts with "*" are component parts or sub-assemblies of the assembly appearing immediately above them.
- Parts with "**" are component parts or sub-assembly with "*" appearing immediately above them.

[CONFIDENTIAL]

京セラドキュメントソリューションズ株式会社の許可なく、本資料を配布することを禁じます。

Revision 欄記載項目の内容は以下の通りです。

記載項目	内容
Add	新規部品の追加
Del	部品の削除
Design-chg.	部品の設変(版数アップ)
Part No.-chg.	部品番号の変更
Quantity-chg.	部品の個数変更
Others	その他の変更
Correction	誤記訂正

改版履歴

Rev.	改訂日	備考
1	2018年12月	設変対応
2	2019年6月	設変対応
3	2020年12月	設変対応

記号の見方

イラスト中で Ref 番号がない部品は供給できません。
 イラスト中で 500 番台の Ref 番号が付いている部品はサービスパーツに
 選定されていません。
 部品番号欄の・印は、組立部品の単品部品及び準組立部品を表わします。
 部品番号欄の**印は、準組立部品の単品部品を表わします。

———— **CONTENTS** ————

FIG. 1	Paper Feed Section	2
FIG. 2	Paper Cassette	4
FIG. 3	Wire Section	6

FIG. 1 Paper Feed Section

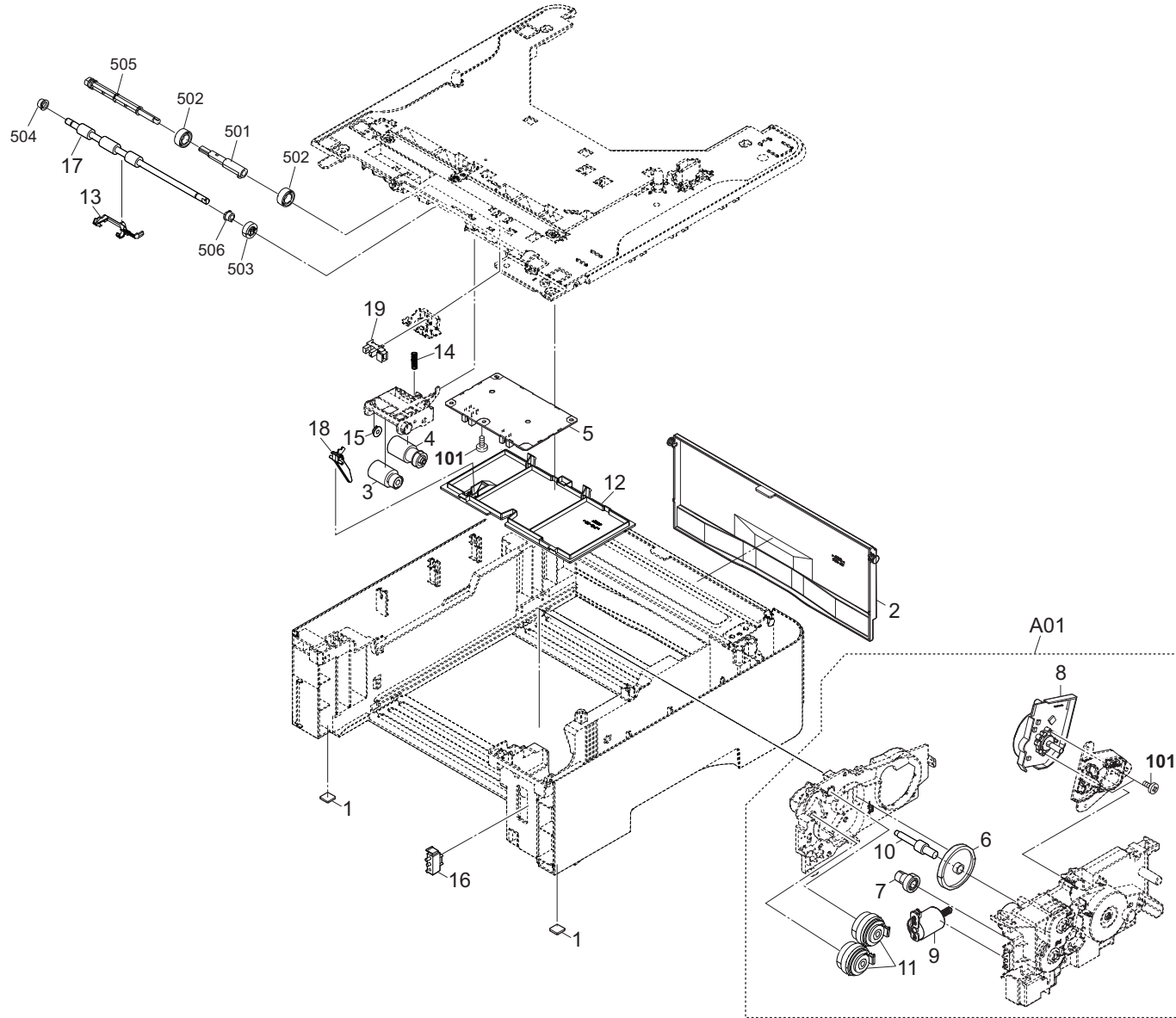


FIG. 1 Paper Feed Section

3SA-3

Ref No.	Part.No.	Description	Notes	Revision	Quantity			
					100	120	230	240
1	302HN02611	FOOT			2	2	2	2
2	303SA04010	COVER REAR			1	1	1	1
3	302F906230	PULLEY FEED ASSY			1	1	1	1
4	302HN06080	PULLEY PICKUP ASSY			1	1	1	1
5	303NY94011	PARTS PWB ASSY PF MAIN SP			1	1	1	1
A01	303NY94041	PARTS DRIVE ASSY SP			1	1	1	1
6	+303K831040	GEAR Z58L			1	1	1	1
7	+303K831261	GEAR Z36R Z20S			1	1	1	1
8	+302K994324	PARTS MOTOR-BL W20 SP			1	1	1	1
9	+303NY94020	PARTS DC MOTOR ASSY SP		Part No-chg.	1	1	1	1
10	+303NY31120	PIN DRIVE			1	1	1	1
11	+302KV94520	PARTS CLUTCH 50 Z35R SP			2	2	2	2
12	303K802081	COVER TOP			1	1	1	1
13	303K806030	ACTUATOR FEED			1	1	1	1
14	303NY06060	SPRING PICKUP B			1	1	1	1
15	302K306460	BUSH 4			1	1	1	1
16	7SP03072003+H01	SW.PUSH		Part No-chg.	1	1	1	1
17	303K806080	ROLLER MIDDLE ASSY			1	1	1	1
18	303NY06030	ACTUATOR PE			1	1	1	1
19	7NXSG2A141++H01	SENSOR OPT.			1	1	1	1
101	7BB202308H	+TP-FLAT T.T P SCREW 3X8						

FIG. 2 Paper Cassette

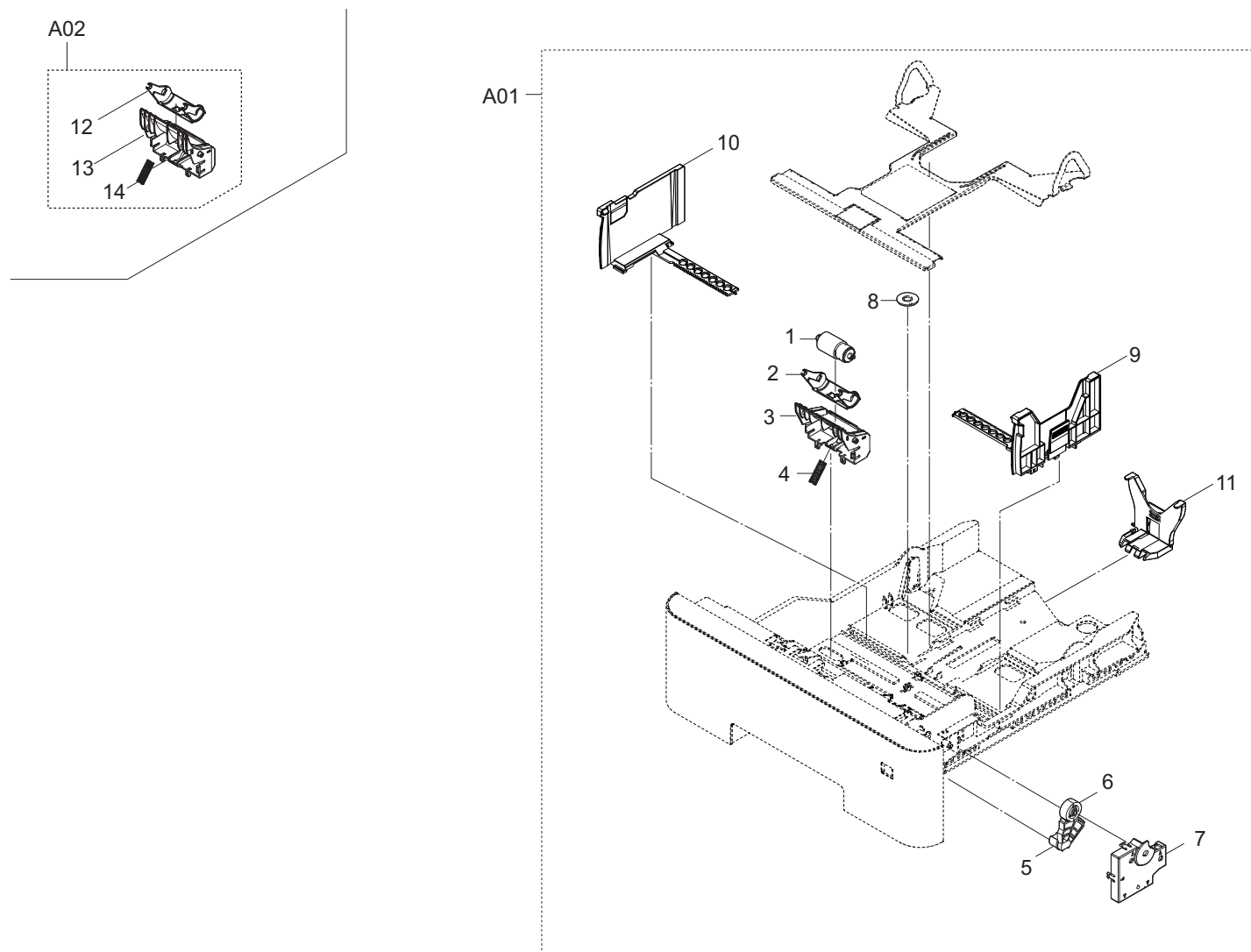


FIG. 2 Paper Cassette

3SA-3

Ref No.	Part.No.	Description	Notes	Revision	Quantity			
					100	120	230	240
A01	303SA93011	CT-3110			1	1	1	1
1	*302F909171	RETARD ROLLER ASSY			1	1	1	1
2	*3V2LV09311	HOLDER RETARD B			1	1	1	1
3	*303NY09190	GUIDE RETARD B			1	1	1	1
4	*302LV09330	SPRING RETARD B			1	1	1	1
5	*302LV09241	GEAR Z48S LIFT			1	1	1	1
6	*303NY09091	GEAR Z15S JOINT			1	1	1	1
7	*303NY09040	COVER LIFT GEAR			1	1	1	1
8	*5MVG127DN071	GEAR CASSETTE /A-49 CASSETTE A4			1	1	1	1
9	*302LV09061	CURSOR RIGHT			1	1	1	1
10	*302LV09070	CURSOR LEFT			1	1	1	1
11	*3V2LV09090	CURSOR END		Part No.-chg.	1	1	1	1
A02	303NY94030	PARTS HOLDER RETARD B SET SP			1	1	1	1
12	*3V2LV09311	HOLDER RETARD B			1	1	1	1
13	*303NY09190	GUIDE RETARD B			1	1	1	1
14	*302LV09330	SPRING RETARD B			1	1	1	1

FIG. 3 Wire Section

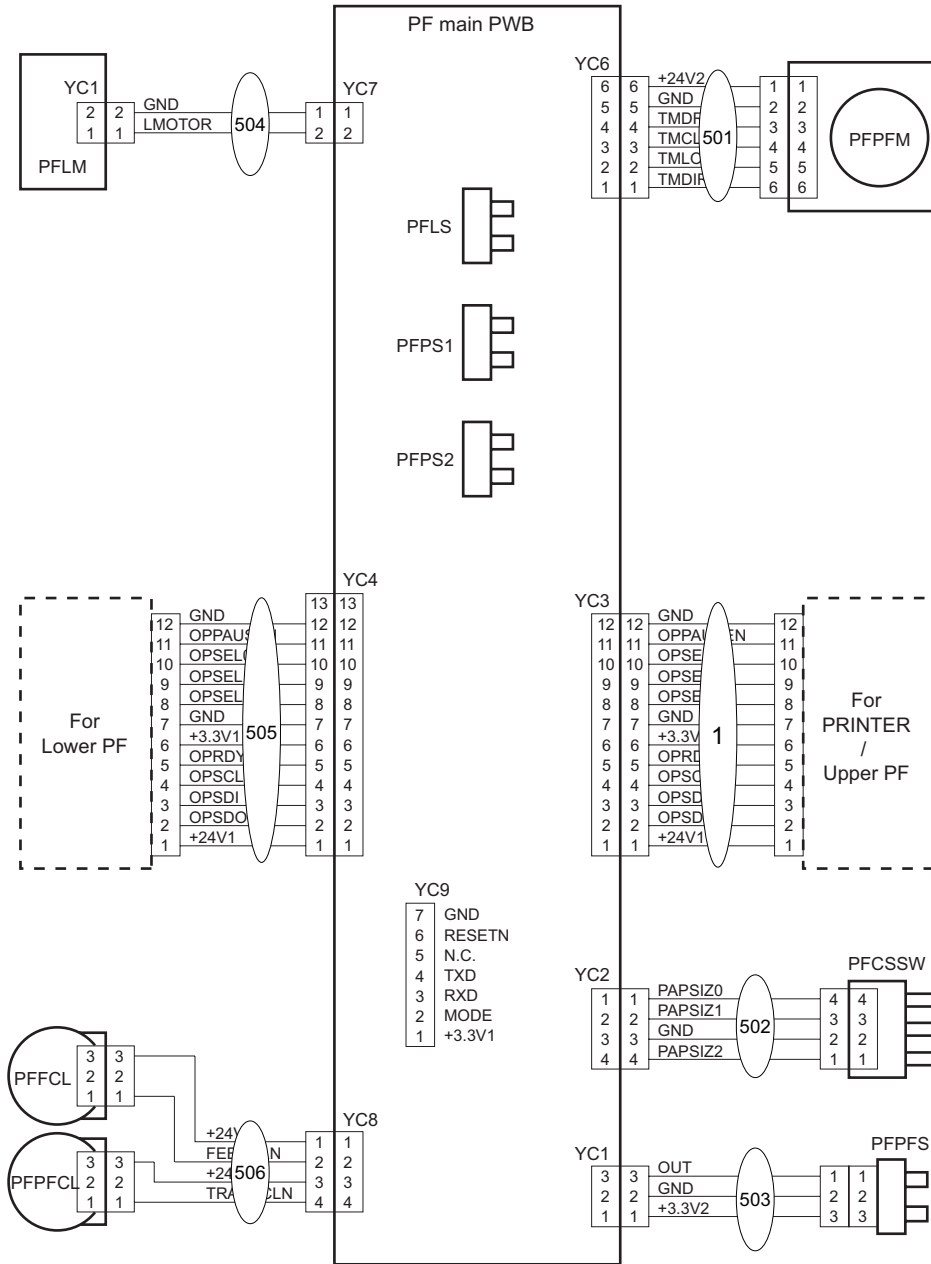


FIG. 3 Wire Section

3SA

Ref No.	Part.No.	Description	Notes	Revision	Quantity			
					100	120	230	240
1	303NY46020	CONN.CORD ASSY S03759			1	1	1	1

PT-320

August 2016
First Edition

[CONFIDENTIAL]

FOR AUTHORIZED KYOCERA ENGINEERS ONLY. DO NOT DISTRIBUTE TO NON-AUTHORIZED PARTIES.

Items listed in the revision columns are defined as follows.

Item	Description
Add	Add a new part
Del	Delete a part
Design-chg.	A design changed part (Parts number version up)
Part No.-chg.	A part number is changed to other one.
Quantity-chg.	Change Quantity of parts to use
Others	Other changes
Correction	Correction

Revision history

Rev.	Date	Remarks

Symbols in the parts list

- Parts without a Ref.No. in the illustration indicate they are not supplied.
- Parts with a Ref.No. of 500 and above in the illustration indicate they are not selected for service parts.
- Parts with "*" are component parts or sub-assemblies of the assembly appearing immediately above them.
- Parts with "**" are component parts or sub-assembly with "*" appearing immediately above them.

[CONFIDENTIAL]

京セラドキュメントソリューションズ株式会社の許可なく、本資料を配布することを禁じます。

Revision 欄記載項目の内容は以下の通りです。

記載項目	内容
Add	新規部品の追加
Del	部品の削除
Design-chg.	部品の設変(版数アップ)
Part No.-chg.	部品番号の変更
Quantity-chg.	部品の個数変更
Others	その他の変更
Correction	誤記訂正

改版履歴

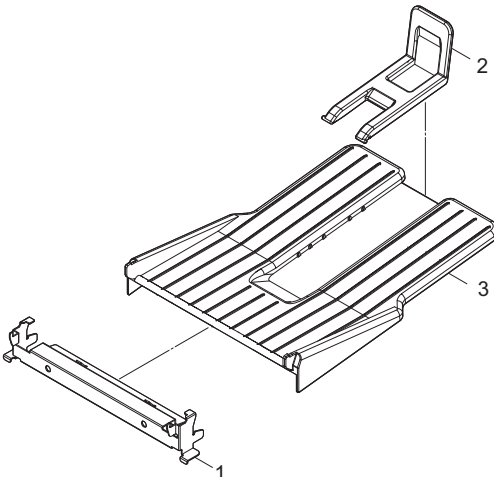
Rev.	改訂日	備考

記号の見方

- イラスト中で Ref 番号がない部品は供給できません。
 イラスト中で 500 番台の Ref 番号が付いている部品はサービスパーツに選定されていません。
 部品番号欄の・印は、組立部品の単品部品及び準組立部品を表わします。
 部品番号欄の**印は、準組立部品の単品部品を表わします。

—— CONTENTS ——

FIG. 1 PT-320 2



**KYOCERA Document Solutions
Europe B.V.**

Bloemlaan 4, 2132 NP Hoofddorp, The Netherlands
 Phone: +31(0)20-654-0000
 Fax: +31(0)20-653-1256

**KYOCERA Document Solutions
Nederland B.V.**

Beechavenue 25, 1119 RA Schiphol-Rijk, The Netherlands
 Phone: +31-20-5877200
 Fax: +31-20-5877260

**KYOCERA Document Solutions
(U.K.) Limited**

Eldon Court, 75-77 London Road,
 Reading, Berkshire RG1 5BS, United Kingdom
 Phone: +44-118-931-1500
 Fax: +44-118-931-1108

**KYOCERA Document Solutions
Italia S.p.A.**

Via Monfalcone 15, 20132, Milano, Italy,
 Phone: +39-02-921791
 Fax: +39-02-92179-603

**KYOCERA Document Solutions
Belgium N.V.**

Sint-Martinusweg 199-201 1930 Zaventem, Belgium
 Phone: +32-2-7209270
 Fax: +32-2-7208748

**KYOCERA Document Solutions
France S.A.S.**

Espace Technologique de St Aubin Route de l'Orme
 91195 Gif-sur-Yvette CEDEX, France
 Phone: +33-1-69852600
 Fax: +33-1-69853409

**KYOCERA Document Solutions
Espana, S.A.**

Edificio Kyocera, Avda. de Manacor No.2, 28290
 Las Matas (Madrid), Spain
 Phone: +34-91-6318392
 Fax: +34-91-6318219

**KYOCERA Document Solutions
Finland Oy**

Atomitie 5C, 00370 Helsinki, Finland
 Phone: +358-9-47805200
 Fax: +358-9-47805212

**KYOCERA Document Solutions
Europe B.V. Amsterdam (NL) Zürich Branch**

Hohlstrasse 614, 8048 Zürich, Switzerland
 Phone: +41-44-9084949
 Fax: +41-44-9084950

**KYOCERA Bilgitas Document Solutions
Turkey A.S.**

Altunizade Mah. Prof. Fahrettin Kerim Gökay Cad. No:45
 34662 ÜSKÜDAR İSTANBUL, TURKEY
 Phone: +90-216-339-0020
 Fax: +90-216-339-0070

**KYOCERA Document Solutions
Deutschland GmbH**

Otto-Hahn-Strasse 12, 40670 Meerbusch, Germany
 Phone: +49-2159-9180
 Fax: +49-2159-918100

**KYOCERA Document Solutions
Austria GmbH**

Wienerbergstraße 11, Turm A, 18. OG, 1100 Wien,
 Austria
 Phone: +43-1-863380
 Fax: +43-1-86338-400

**KYOCERA Document Solutions
Nordic AB**

Borgarfjordsgatan 11, 164 40 Kista, Sweden
 Phone: +46-8-546-550-00
 Fax: +46-8-546-550-10

**KYOCERA Document Solutions
Norge Nuf**

Olaf Helsetsv. 6, 0619 Oslo, Norway
 Phone: +47-22-62-73-00
 Fax: +47-22-62-72-00

**KYOCERA Document Solutions
Danmark A/S**

Ejby Industrivej 60, DK-2600 Glostrup, Denmark
 Phone: +45-70223880
 Fax: +45-45765850

**KYOCERA Document Solutions
Portugal Lda.**

Rua do Centro Cultural, 41 (Alvalade) 1700-106 Lisboa,
 Portugal
 Phone: +351-21-843-6780
 Fax: +351-21-849-3312

**KYOCERA Document Solutions
South Africa (Pty) Ltd.**

KYOCERA House, Hertford Office Park,
 90 Bekker Road (Cnr. Allandale), Midrand, South Africa
 Phone: +27-11-540-2600
 Fax: +27-11-466-3050

**KYOCERA Document Solutions
Russia LLC**

Building 2, 51/4, Schepkina St., 129110, Moscow,
 Russia
 Phone: +7(495)741-0004
 Fax: +7(495)741-0018

KYOCERA Document Solutions Middle East

Dubai Internet City, Bldg. 17,
 Office 157 P.O. Box 500817, Dubai, United Arab
 Emirates
 Phone: +971-4-4330412
 Fax: +971-4-4231944

**KYOCERA Document Solutions
Czech, s.r.o.**

Harfa Office Park, Českomoravská 2420/15, Praha 9
 Phone: +420-222-562-246

KYOCERA Document Solutions America, Inc.**Headquarters**

225 Sand Road,
Fairfield, New Jersey 07004-0008, USA
Phone: +1-973-808-8444
Fax: +1-973-882-6000

Latin America

8240 NW 52nd Terrace, Suite 301
Miami, Florida 33166, USA
Phone: +1-305-421-6640

**KYOCERA Document Solutions
Canada, Ltd.**

6120 Kestrel Rd., Mississauga, ON L5T 1S8,
Canada
Phone: +1-905-670-4425
Fax: +1-905-670-8116

**KYOCERA Document Solutions
Mexico, S.A. de C.V.**

Calle Arquimedes No. 130, 4 Piso, Colonia Polanco
Chapultepec, Delegacion Miguel Hidalgo,
Ciudad de Mexico, C.P. 11560
Phone: +52-555-383-2741
Fax: +52-555-383-7804

**KYOCERA Document Solutions
Brazil, Ltda.**

Alameda África, 545, Pólo Empresarial Consbrás,
Tamboré, Santana de Parnaíba, State of São Paulo,
CEP 06543-306, Brazil
Phone: +55-11-2424-5353
Fax: +55-11-2424-5304

**KYOCERA Document Solutions
Chile SpA**

Jose Ananias 505, Macul. Santiago, Chile
Phone: +56-2-2670-1900
Fax: +56-2-2350-7150

**KYOCERA Document Solutions
Australia Pty. Ltd.**

Level 3, 6-10 Talavera Road North Ryde N.S.W, 2113,
Australia
Phone: +61-2-9888-9999
Fax: +61-2-9888-9588

**KYOCERA Document Solutions
New Zealand Ltd.**

Ground Floor, 19 Byron Avenue, Takapuna, Auckland,
New Zealand
Phone: +64-9-415-4517
Fax: +64-9-415-4597

KYOCERA Document Solutions Asia Limited

13/F.,Mita Centre, 552-566, Castle Peak Road, Tsuen
Wan, New Territories, Hong Kong
Phone: +852-2496-5678
Fax: +852-2610-2063

**KYOCERA Document Solutions
(China) Corporation**

8F, No. 288 Nanjing Road West, Huangpu District,
Shanghai,200003, China
Phone: +86-21-5301-1777
Fax: +86-21-5302-8300

**KYOCERA Document Solutions
(Thailand) Corp., Ltd.**

335 Ratchadapisek Road, Wongsawang, Bangsue,
Bangkok 10800,
Thailand
Phone: +66-2-586-0333
Fax: +66-2-586-0278

**KYOCERA Document Solutions
Singapore Pte. Ltd.**

12 Tai Seng Street #04-01A,
Luxasia Building, Singapore 534118
Phone: +65-6741-8733
Fax: +65-6748-3788

**KYOCERA Document Solutions
Hong Kong Limited**

16/F.,Mita Centre, 552-566, Castle Peak Road, Tsuen
Wan, New Territories, Hong Kong
Phone: +852-3582-4000
Fax: +852-3185-1399

**KYOCERA Document Solutions
Taiwan Corporation**

6F., No.37, Sec. 3, Minquan E. Rd.,
Zhongshan Dist., Taipei 104, Taiwan R.O.C.
Phone: +886-2-2507-6709
Fax: +886-2-2507-8432

**KYOCERA Document Solutions
Korea Co., Ltd.**

#10F Daewoo Foundation Bldg 18, Toegye-ro, Jung-gu,
Seoul, Korea
Phone: +822-6933-4050
Fax: +822-747-0084

**KYOCERA Document Solutions
India Private Limited**

First Floor, Block-A, First India Place, Sushant Lok
Phase-1, M.G. Road, Gurugram-12200 2 (Haryana),
India
Phone: +91-124-4671000
Fax: +91-124-4671001

KYOCERA Document Solutions Inc.

2-28, 1-Chome, Tamatsukuri, Chuo-ku
Osaka 540-8585, Japan
Phone: +81-6-6764-3555
<https://www.kyoceradocumentsolutions.com>