

# PARTS LIST

**ECOSYS P3145dn**

**ECOSYS P3150dn**

**ECOSYS P3155dn**

**PB-325 / PF-3100 / PF-3110 / PT-320**

# パーツリスト

**ECOSYS P3145dn**

**ECOSYS P3160dn**

**PB-325 / PF-3100 / PF-3110 / PT-320**





---

**ECOSYS P3145dn**  
**ECOSYS P3150dn**  
**ECOSYS P3155dn**  
**ECOSYS P3160dn**

**[CONFIDENTIAL]**

FOR AUTHORIZED KYOCERA ENGINEERS ONLY. DO NOT DISTRIBUTE TO NON-AUTHORIZED PARTIES.

**Items listed in the revision columns are defined as follows.**

Item	Description
Add	Add a new part
Del	Delete a part
Design-chg.	A design changed part (Parts number version up)
Part No.-chg.	A part number is changed to other one.
Quantity-chg.	Change Quantity of parts to use
Others	Other changes
Correction	Correction

**Revision history**

Rev.	Date	Remarks
1	April 2019	Correction and Other changes

**Symbols in the parts list**

- Parts without a Ref.No. in the illustration indicate they are not supplied.
- Parts with a Ref.No. of 500 and above in the illustration indicate they are not selected for service parts.
- Parts with "\*" are component parts or sub-assemblies of the assembly appearing immediately above them.
- Parts with "\*\*" are component parts or sub-assembly with "\*" appearing immediately above them.

**<Notation of products>**

For the purpose of this parts list, products are identified as following.

ECOSYS P3145dn : 45ppm(A4),47ppm(Letter)

ECOSYS P3150dn : 50ppm(A4),52ppm(Letter)

ECOSYS P3155dn : 55ppm(A4),57ppm(Letter)

**[CONFIDENTIAL]**

京セラドキュメントソリューションズ株式会社の許可なく、本資料を配布することを禁じます。

**改訂欄記載項目の内容は以下の通りです。**

記載項目	内容
Add	新規部品の追加
Del	部品の削除
Design-chg.	部品の設変(版数アップ)
Part No.-chg.	部品番号の変更
Quantity-chg.	部品の個数変更
Others	その他の変更
Correction	誤記訂正

**改訂履歴**

Rev.	改訂日	備考
1	2019年4月	誤記訂正およびその他の変更

**記号の見方**

イラスト中で Ref 番号がない部品は供給できません。  
イラスト中で 500 番台の Ref 番号が付いている部品はサービスパーツに選定されていません。  
部品番号欄の・印は、組立部品の単品部品及び準組立部品を表わします。  
部品番号欄の\*\*印は、準組立部品の単品部品を表わします。

**< 本体機種区別表記 >**

パーツリスト中の本体機種区別は、以下の様に記載します。

ECOSYS P3145dn : 45ppm(A4),47ppm(Letter)

ECOSYS P3160dn : 60ppm(A4)

## CONTENTS

FIG. 1	Covers .....	2
FIG. 2	Frames .....	4
FIG. 3	Paper Cassette .....	6
FIG. 4	Paper Feed Section (Cassette/Duplex/MPF) .....	8
FIG. 5	Paper Conveying Section .....	10
FIG. 6	Image Formation Section .....	12
FIG. 7	Developer Section .....	14
FIG. 8	Fuser Section .....	16
FIG. 9	Exit Section .....	18
FIG. 10	Drive Section .....	21
FIG. 11	Wire Section 1 .....	24
FIG. 12	Wire Section 2 .....	26
FIG. 13	Accessories .....	28
FIG. 14	Maintenance Kits (45ppm(A4),47ppm(Letter)) .....	30
FIG. 15	Maintenance Kits (50ppm(A4),52ppm(Letter)/ 55ppm(A4),57ppm(Letter)/60ppm(A4)) .....	31
• INDEX .....		32

## APPENDIXES/ 付録

Appendixes.1	Wire Section 1 (JA) .....	35
Appendixes.2	Wire Section 2 (JA) .....	37

FIG. 1 Covers

2TT/2TS/2TR/2TP-1

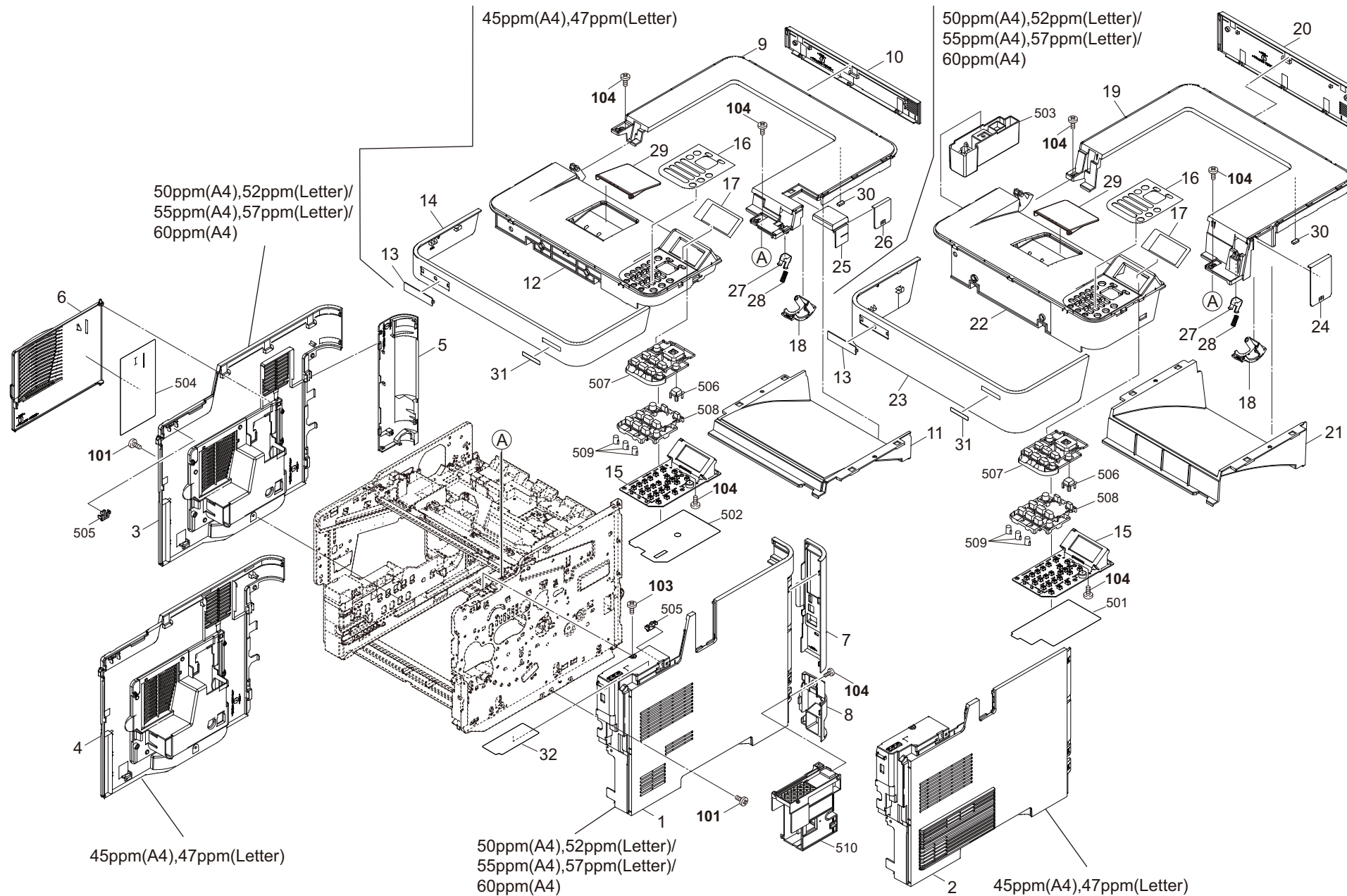


FIG. 1 Covers

2TT/2TS/2TR/2TP-1

Ref No.	Part.No.	Description	Notes	Revision	Quantity			
					100	120	230	240
1	302TP04070	COVER RIGHT	50ppm(A4),52ppm(Letter)/55ppm(A4),57ppm(Letter)/60ppm(A4)		1	1	1	1
2	302TT04050	COVER RIGHT	45ppm(A4),47ppm(Letter)		1	1	1	1
3	302TP04060	COVER LEFT	50ppm(A4),52ppm(Letter)/55ppm(A4),57ppm(Letter)/60ppm(A4)		1	1	1	1
4	302TT04060	COVER LEFT	45ppm(A4),47ppm(Letter)		1	1	1	1
5	302TP04200	COVER LEFT REAR			1	1	1	1
6	302TP04130	COVER SIDE			1	1	1	1
7	302TP04100	COVER CONTROLLER			1	1	1	1
8	302TP04221	COVER RIGHT REAR LOW			1	1	1	1
9	302TT04080	COVER TOP	45ppm(A4),47ppm(Letter)		1	1	1	1
10	302TT04100	COVER REAR TOP	45ppm(A4),47ppm(Letter)		1	1	1	1
11	302TT94020	PARTS TRAY TOP ASSY SP	45ppm(A4),47ppm(Letter)		1	1	1	1
12	302TT04010	LID TOP	45ppm(A4),47ppm(Letter)		1	1	1	1
13	302S018491	EMBLEM			1	1	1	1
14	302TT04020	LID TOP FRONT	45ppm(A4),47ppm(Letter)		1	1	1	1
15	302TP94100	PARTS PWB ASSY PANEL SP			1	1	1	1
16	302TP05050	PANEL OPERATION			1	1	1	1
17	302TP04170	PANEL LCD			1	1	1	1
18	302TP04080	COVER CABLE			1	1	1	1
19	302TP04030	COVER TOP	50ppm(A4),52ppm(Letter)/55ppm(A4),57ppm(Letter)/60ppm(A4)		1	1	1	1
20	302TP04180	COVER REAR TOP	50ppm(A4),52ppm(Letter)/55ppm(A4),57ppm(Letter)/60ppm(A4)		1	1	1	1
21	302TP94050	PARTS TRAY TOP ASSY SP	50ppm(A4),52ppm(Letter)/55ppm(A4),57ppm(Letter)/60ppm(A4)		1	1	1	1
22	302TP04010	LID TOP	50ppm(A4),52ppm(Letter)/55ppm(A4),57ppm(Letter)/60ppm(A4)		1	1	1	1
23	302TP04020	LID TOP FRONT	50ppm(A4),52ppm(Letter)/55ppm(A4),57ppm(Letter)/60ppm(A4)		1	1	1	1
24	302TP04160	COVER TOP B	50ppm(A4),52ppm(Letter)/55ppm(A4),57ppm(Letter)/60ppm(A4)		1	1	1	1
25	302TT04040	COVER TOP B	45ppm(A4),47ppm(Letter)		1	1	1	1
26	302TT04090	COVER TOP C	45ppm(A4),47ppm(Letter)		1	1	1	1
27	302T604071	STOPPER LID TOP			1	1	1	1
28	302T604080	SPRING STOPPER LID TOP			1	1	1	1
29	302TP04140	PAPER STOPPER			1	1	1	1
30	302TP28090	SPONGE EXIT			1	1	1	1
31	302TT34020	SHEET MACHINE NUMBER	45ppm(A4),47ppm(Letter)		1	1	1	1
31	302TS34010	SHEET MACHINE NUMBER	50ppm(A4),52ppm(Letter)			1	1	1
31	302TR34010	SHEET MACHINE NUMBER	55ppm(A4),57ppm(Letter)			1	1	1
31	302TP34010	SHEET MACHINE NUMBER	60ppm(A4)		1			
32	302LV34210	LABEL LEVER A			1	1	1	1
101	7BB700308H	+BIND T.T S SCREW 3X8 SR						
102				1:Del				
103	7BB700312H	+BIND T.T S SCREW 3X12 SR						
104	7BB200308H	+BIND T.T P SCREW 3X8						

FIG. 2 Frames

2TT/2TS/2TR/2TP

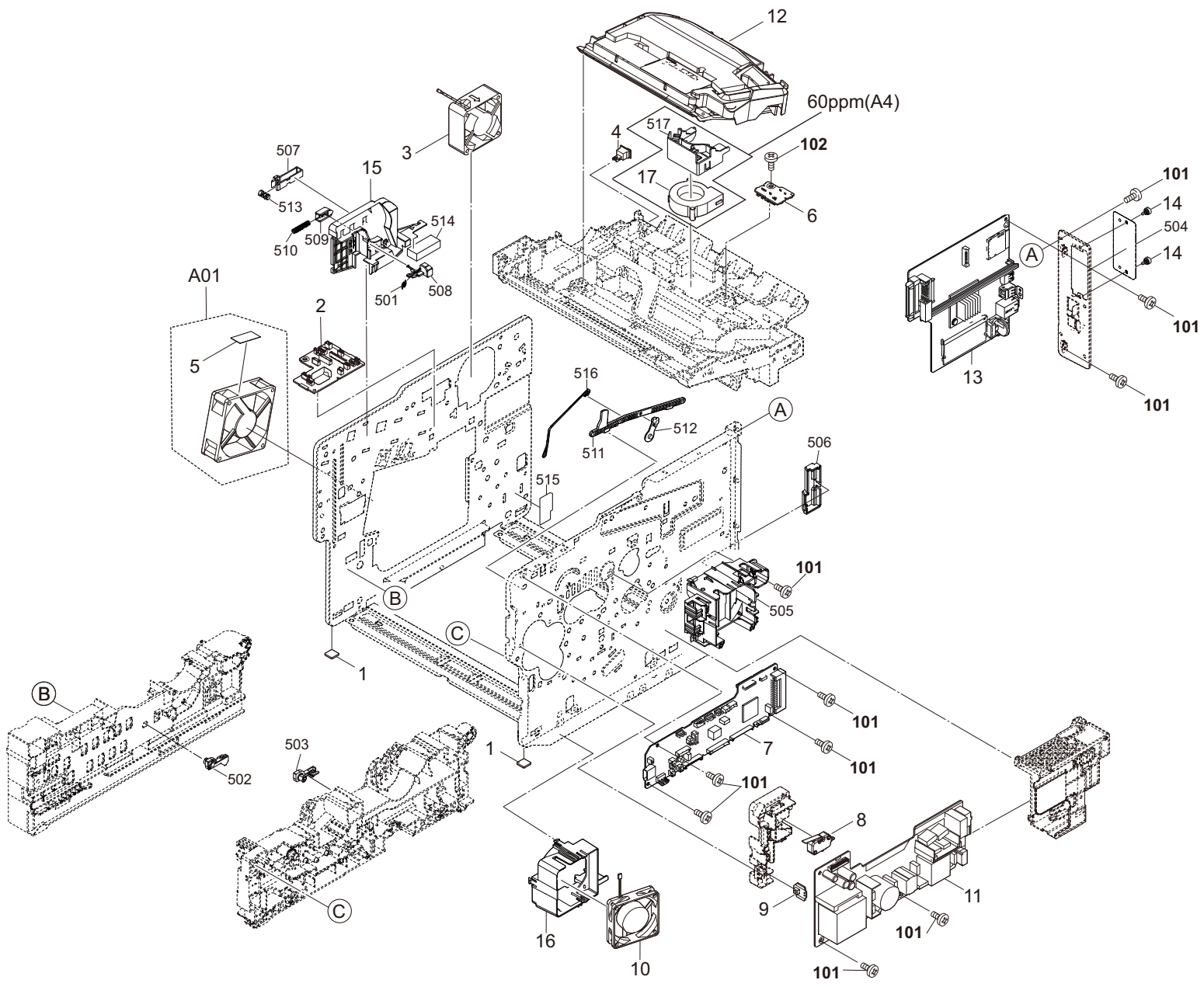




FIG. 2 Frames

2TT/2TS/2TR/2TP

Ref No.	Part.No.	Description	Notes	Revision	Quantity			
					100	120	230	240
1	302HN02611	FOOT			2	2	2	2
2	302T994040	PARTS PWB ASSY CONNECT-L SP	45ppm(A4),47ppm(Letter)		1	1	1	1
2	302T694070	PARTS PWB ASSY CONNECT-L SP	50ppm(A4),52ppm(Letter)/55ppm(A4),57ppm(Letter)/60ppm(A4)		1	1	1	1
3	302GR44080	FAN LSU 60-25			1	1	1	1
4	7SP01000006+H01	SW.PUSH			1	1	1	1
A01	302LV94430	PARTS FAN MOTOR ASSY SP			1	1	1	1
5	*302LV02610	SHEET FAN L			1	1	1	1
6	302LV94220	PARTS PWB ASSY TH CONNECT SP			1	1	1	1
7	302TT94030	PARTS PWB ASSY ENGINE SP	45ppm(A4),47ppm(Letter)		1	1	1	1
7	302TS94010	PARTS PWB ASSY ENGINE SP	50ppm(A4),52ppm(Letter)			1	1	1
7	302TR94010	PARTS PWB ASSY ENGINE SP	55ppm(A4),57ppm(Letter)			1	1	1
7	302TP94090	PARTS PWB ASSY ENGINE SP	60ppm(A4)		1			
8	2FB27160	INTER LOCK SWITCH			1	1	1	1
9	302LV94210	PARTS PWB ASSY SWITCH SP			1	1	1	1
10	302FZ94420	PARTS,FAN COOLING CONVEYING SP			1	1	1	1
11	302T694100	PARTS UNIT POWER SUPPLY 120 SP			1	1		
11	302T694110	PARTS UNIT POWER SUPPLY 230 SP					1	1
12	302T993041	LK-3170	45ppm(A4),47ppm(Letter)/50ppm(A4),52ppm(Letter)		1	1	1	1
12	302T693011	LK-3190	55ppm(A4),57ppm(Letter)/60ppm(A4)		1	1	1	1
13	302TP94080	PARTS PWB ASSY MAIN SP			1	1		1
13	302TP94070	PARTS PWB ASSY MAIN SP EU					1	
14	302F939082	SCREW BOX			2	2	2	2
15	302LV11240	GUIDE CONTAINER			1	1	1	1
16	3V2LV02131	DUCT FAN LV			1	1	1	1
17	302LV94350	PARTS FAN MOTOR SP	60ppm(A4)		1			
101	7BB700308H	+BIND T.T S SCREW 3X8 SR						
102	7BB200410H	+BIND T.T P SCREW 4X10						

FIG. 3 Paper Cassette

2TT/2TS/2TR/2TP

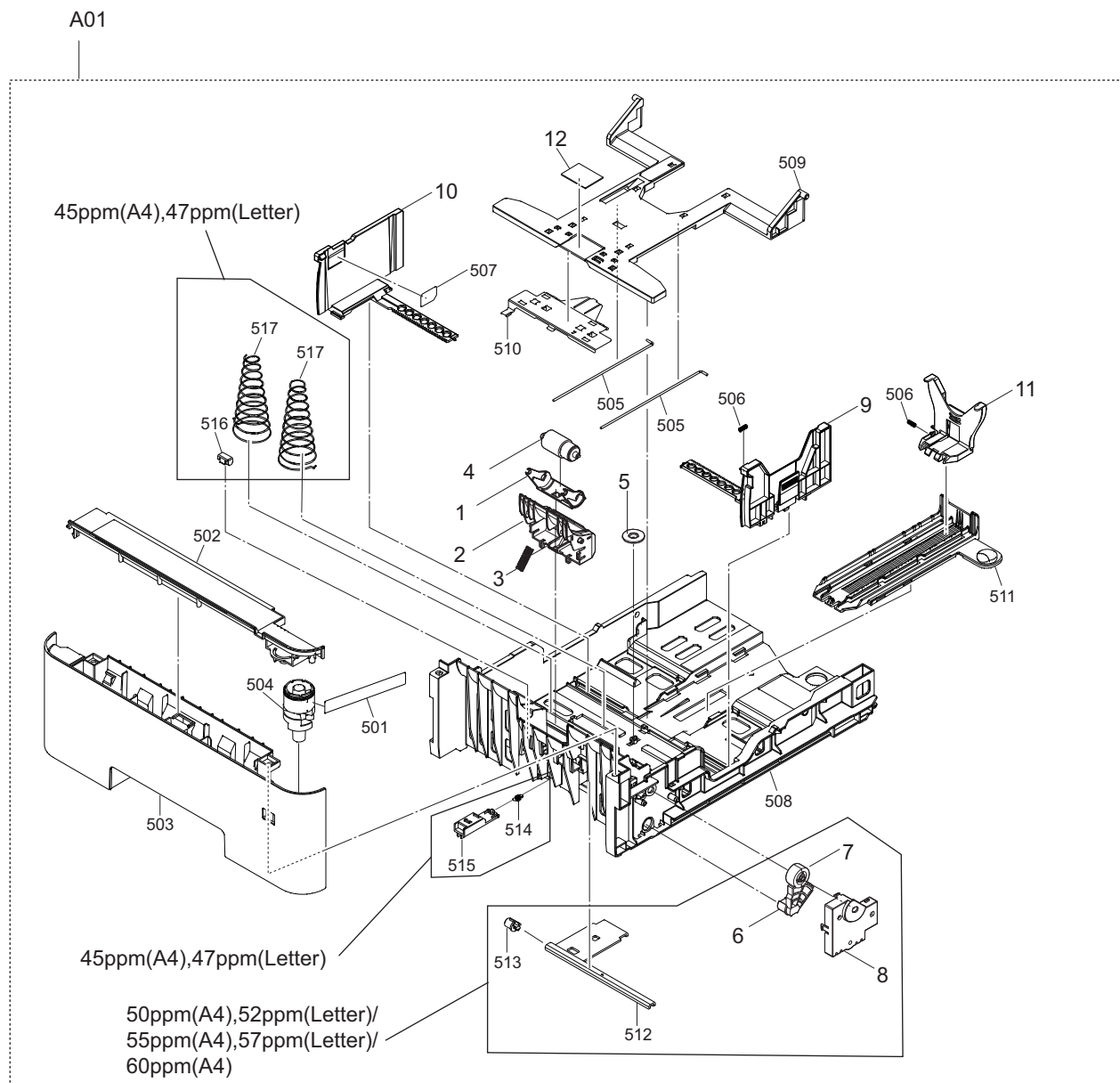




FIG. 4 Paper Feed Section (Cassette/Duplex/MPF)

2TT/2TS/2TR/2TP-1

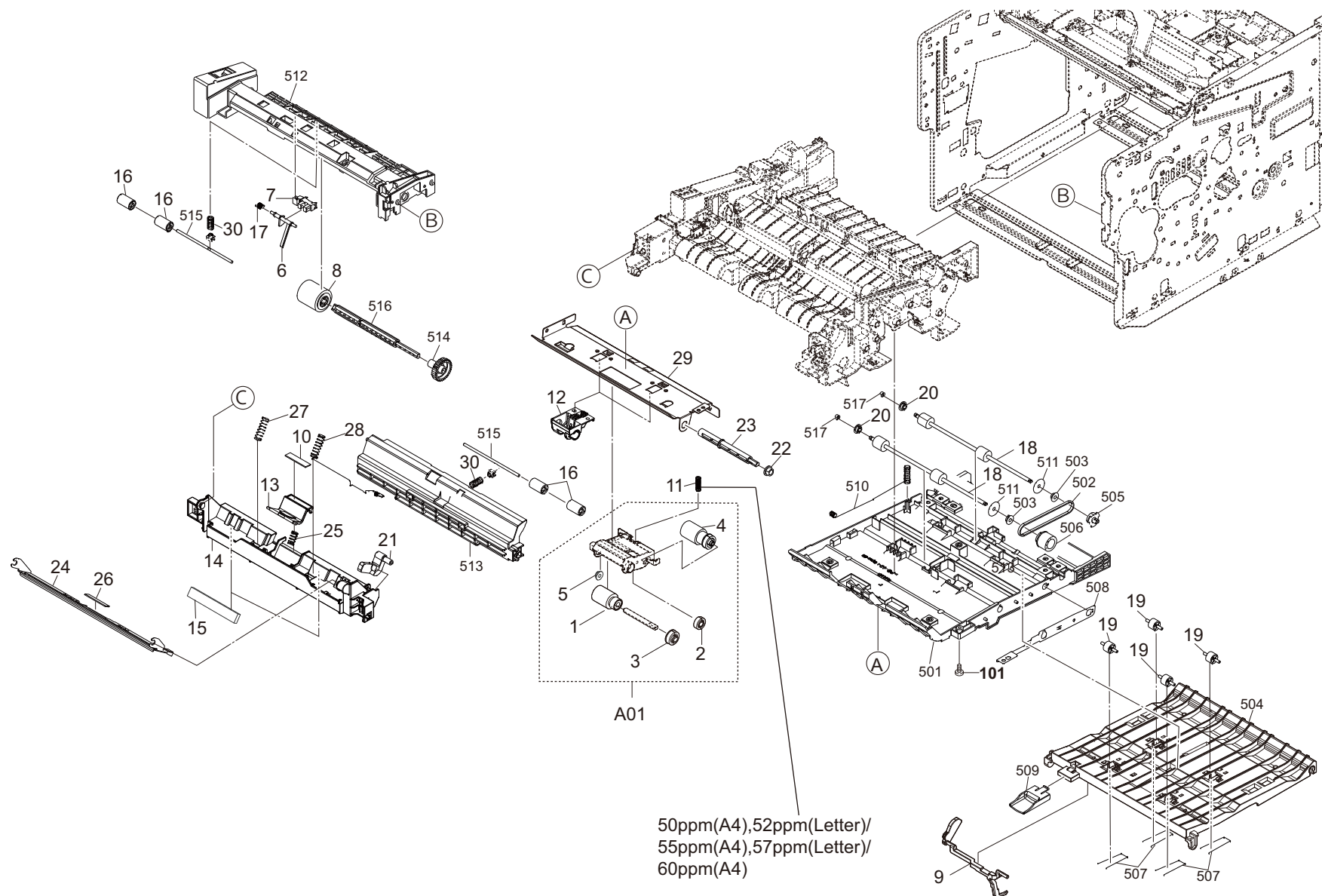


FIG. 4 Paper Feed Section (Cassette/Duplex/MPF)

2TT/2TS/2TR/2TP-1

Ref No.	Part.No.	Description	Notes	Revision	Quantity			
					100	120	230	240
A01	302LV94270	PARTS HOLDER FEED ASSY SP			1	1	1	1
1	•302F906230	PULLEY FEED ASSY		1:Others	1	1	1	1
2	•302F906030	GEAR FEED Z26H		1:Others	1	1	1	1
3	•302F906280	GEAR FEED Z30H		1:Others	1	1	1	1
4	•302HN06080	PULLEY PICKUP ASSY		1:Others	1	1	1	1
5	•302K306460	BUSH 4		1:Others	1	1	1	1
6	302LV08180	ACTUATOR MPF		1:Others	1	1	1	1
7	303M894260	PARTS SENSOR OPT SP		1:Correction/Others	1	1	1	1
8	302HS08260	ROLLER M/P ASSY		1:Others	1	1	1	1
9	302LV29090	ACTUATOR PE		1:Others	1	1	1	1
10	302F908250	PAD SEPARATOR MPF		1:Others	1	1	1	1
11	3V2LV06090	SPRING PICKUP B	50ppm(A4),52ppm(Letter)/55ppm(A4),57ppm(Letter)/60ppm(A4)	1:Others	1	1	1	1
12	3V2LV06030	GUIDE FEED SIDE		1:Others	2	2	2	2
13	3V2LV08070	HOLDER SEPARATION MPF		1:Others	1	1	1	1
14	302LV08150	GUIDE TURN MPF A		1:Others	1	1	1	1
15	302LV08220	SHEET GUIDE TURN A		1:Others	2	2	2	2
16	3V2LV08210	PULLEY FEED		1:Others	4	4	4	4
17	302LV08201	SPRING ACTUATOR MPF		1:Others	1	1	1	1
18	302LV94530	PARTS ROLLER DU ASSY SP		1:Others	2	2	2	2
19	302LV24760	PULLEY PA		1:Others	4	4	4	4
20	302K306460	BUSH 4		1:Others	2	2	2	2
21	3V2LV08090	LEVER CAM MPF		1:Add	1	1	1	1
22	302H024370	BUSH 6 EW		1:Add	1	1	1	1
23	302F906290	SHAFT FEED R		1:Add	1	1	1	1
24	302LV08080	PLATE BOTTOM MPF		1:Add	1	1	1	1
25	302LV08110	SPRING SEPARATION MPF		1:Add	1	1	1	1
26	302F908311	PAD FRICTION MPF		1:Add	1	1	1	1
27	302LV08120	SPRING BOTTOM MPF L		1:Add	1	1	1	1
28	302LV08130	SPRING BOTTOM MPF R		1:Add	1	1	1	1
29	302LV06010	GUIDE FEED UP	50ppm(A4),52ppm(Letter)/55ppm(A4),57ppm(Letter)/60ppm(A4)	1:Add	1	1	1	1
29	3V2L206010	GUIDE FEED UP 40	45ppm(A4),47ppm(Letter)	1:Add	1	1	1	1
30	302LV24230	SPRING MIDDLE		1:Add	2	2	2	2
101	7BB200412H	+BIND T.T P SCREW 4X12						

FIG. 5 Paper Conveying Section

2TT/2TS/2TR/2TP-1

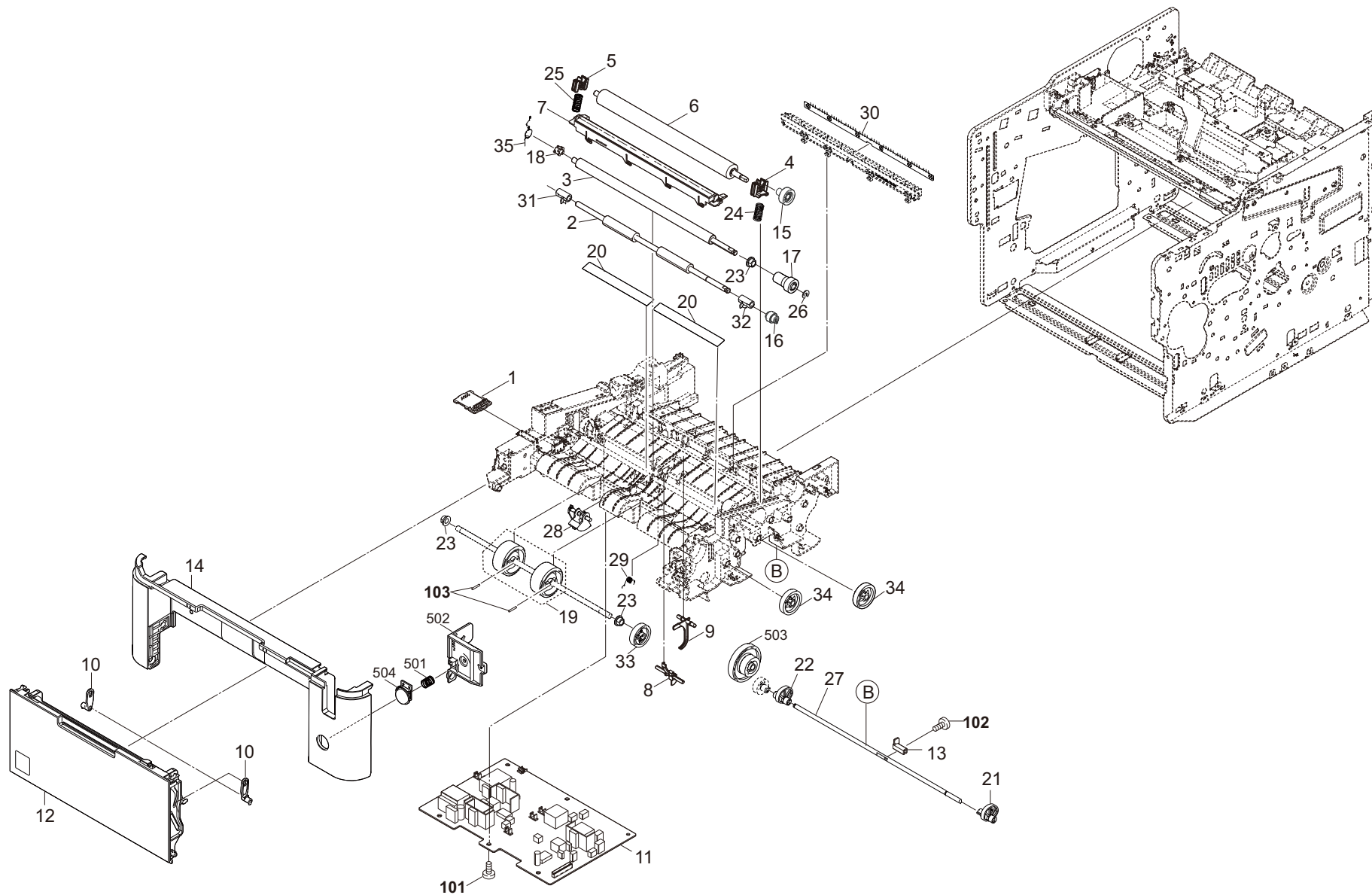


FIG. 5 Paper Conveying Section

2TT/2TS/2TR/2TP-1

Ref No.	Part.No.	Description	Notes	Revision	Quantity			
					100	120	230	240
1	302T694080	PARTS PWB ASSY DRUM CONNECT SP		1:Others	1	1	1	1
2	302LV94170	PARTS ROLLER REGIST LOW SP		1:Others	1	1	1	1
3	302LV94180	PARTS ROLLER REGIST UP SP		1:Others	1	1	1	1
4	302F924190	BUSH TRANSFER R		1:Others	1	1	1	1
5	302LV24360	BUSH TRANSFER L		1:Others	1	1	1	1
6	302LV94130	PARTS ROLLER TRANSFER SP		1:Others	1	1	1	1
7	302LV94261	PARTS GUIDE PAPER CHUTE SP		1:Others		1	1	1
7	302LV94330	PARTS GUIDE PAPER CHUTE SP JP		1:Others	1			
8	302LV24100	ACTUATOR IMAGE	50ppm(A4),52ppm(Letter)/55ppm(A4),57ppm(Letter)/60ppm(A4)	1:Others	1	1	1	1
9	3V2LV24111	ACTUATOR DU		1:Add	1	1	1	1
10	3V2LV08100	LEVER LINK		1:Others	2	2	2	2
11	302L294030	PARTS HIGH VOLTAGE UNIT SP	45ppm(A4),47ppm(Letter)	1:Others	1	1	1	1
11	302LV94060	PARTS HIGH VOLTAGE UNIT SP	50ppm(A4),52ppm(Letter)/55ppm(A4),57ppm(Letter)/60ppm(A4)	1:Others	1	1	1	1
12	302TP94010	PARTS COVER MPF ASSY SP		1:Others	1	1	1	1
13	302LV24450	ACTUATOR ENVELOPE		1:Others	1	1	1	1
14	302TP04050	COVER FRONT		1:Others	1	1	1	1
15	302LV24140	GEAR Z22R TC		1:Others	1	1	1	1
16	302LV24150	GEAR Z22L REGIST LOW		1:Others	1	1	1	1
17	302LV24160	GEAR Z19R-Z22R REGIST UP		1:Others	1	1	1	1
18	302LV24520	BUSH 6 EW		1:Others	1	1	1	1
19	302P794090	PARTS ROLLER MIDDLE SET SP		1:Others	1	1	1	1
20	302LV24220	SHEET REGIST		1:Others	2	2	2	2
21	3V2LV24510	LOCK ENVELOPE R		1:Others	1	1	1	1
22	3V2LV24440	LOCK ENVELOPE L		1:Others	1	1	1	1
23	302H702590	BUSH SCREW		1:Others	3	3	3	3
24	302LV24280	SPRING TRANSFER R		1:Others	1	1	1	1
25	302LV24290	SPRING TRANSFER L		1:Others	1	1	1	1
26	302FB09830	CUT WASHER 4		1:Add	1	1	1	
27	302LV24460	SHAFT ENVELOPE		1:Add	1	1	1	1
28	3V2LV24120	LEVER EMPTY		1:Add	1	1	1	1
29	302LV24420	SPRING IMAGE SENSOR		1:Add	1	1	1	1
30	302LV24060	BRUSH DC CHARGE		1:Add	1	1	1	1
31	302LV24350	BUSH REGIST LOW L		1:Add	1	1	1	1
32	302LV24530	BUSH REGIST LOW R		1:Add	1	1	1	1
33	3V2LV24130	GEAR Z32L MIDDLE		1:Add	1	1	1	1
34	3V2LV31080	GEAR Z35L		1:Add	2	2	2	2
35	302LV24660	SPRING EARTH REG B		1:Add	1	1	1	1
101	7BB200412H	+BIND T.T P SCREW 4X12		1:Others				
102	7BB000304H	+BIND M SCREW 3X4		1:Others				
103	5MBP2012WPLD	PARALLEL PIN / M2 X 12 SUS-DP		1:Others				

FIG. 6 Image Fomation Section

2TT/2TS/2TR/2TP

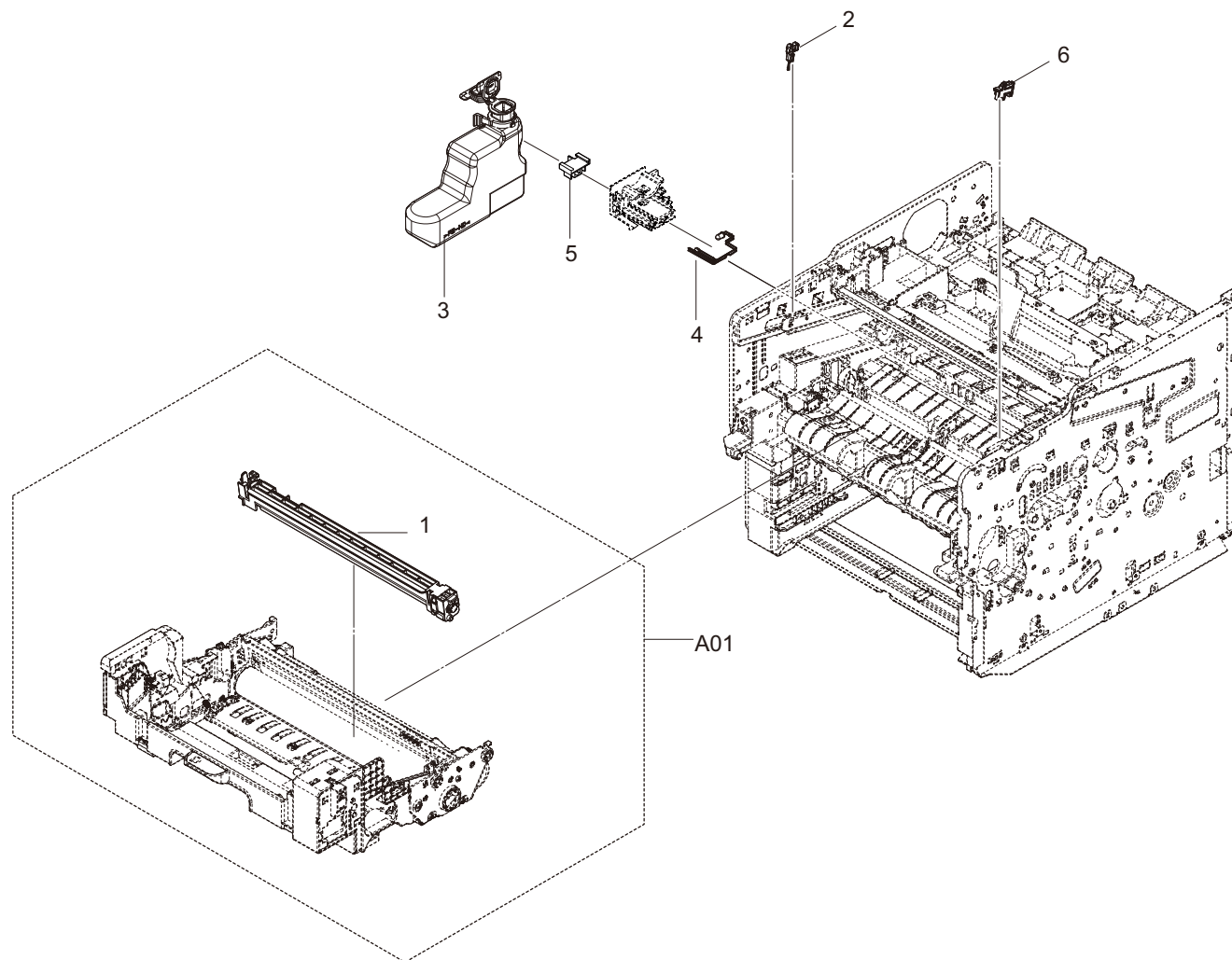






FIG. 7 Developing Section

2TT/2TS/2TR/2TP

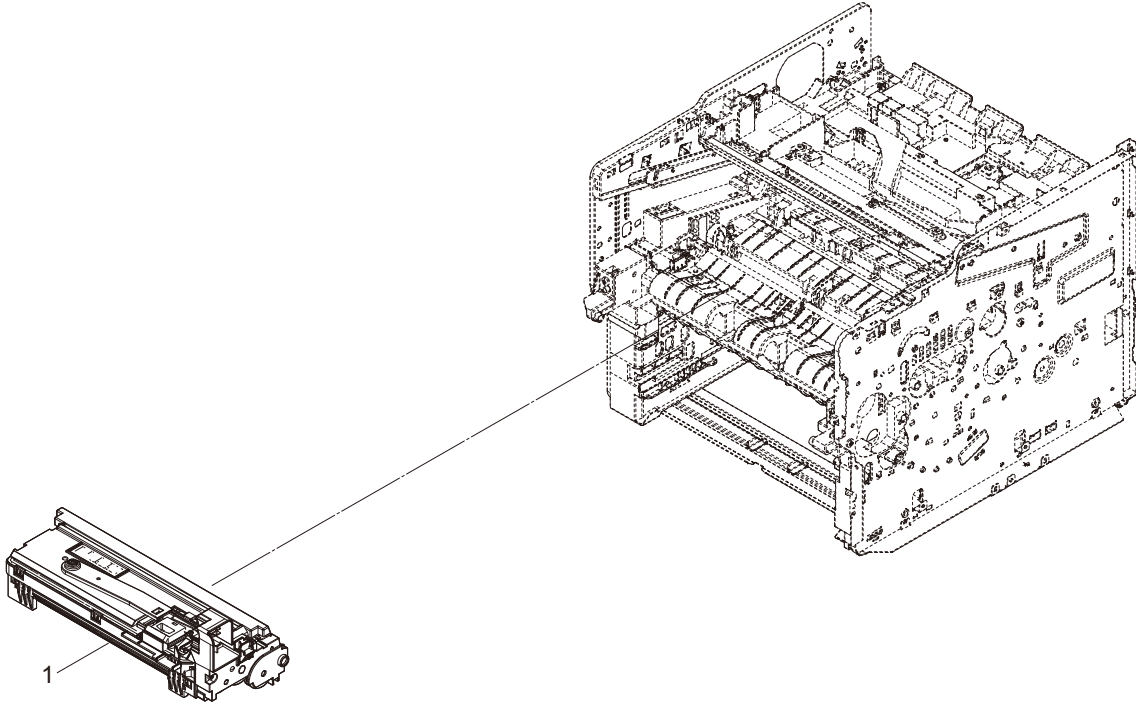




FIG. 8 Fuser\_Section

2TT/2TS/2TR/2TP-1

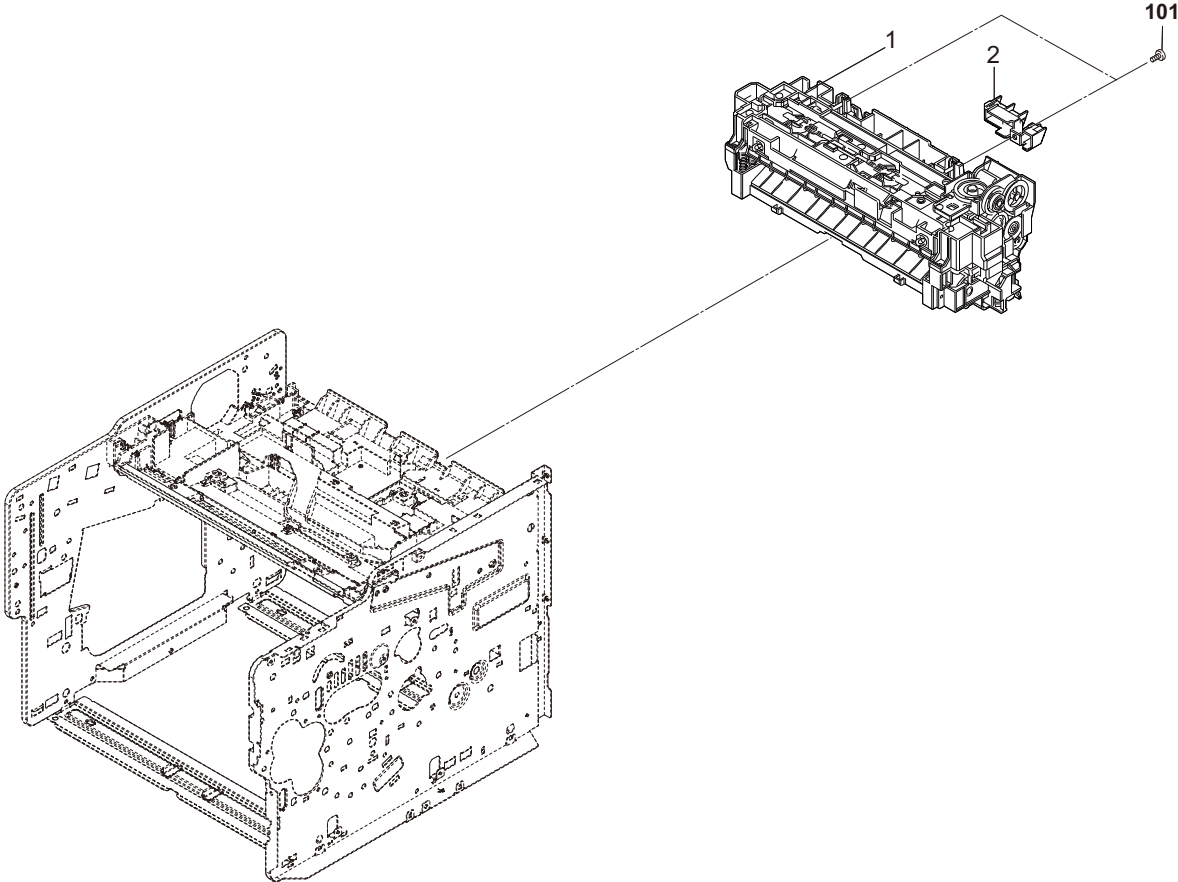




FIG. 9 Exit\_section

2TT/2TS/2TR/2TP-1

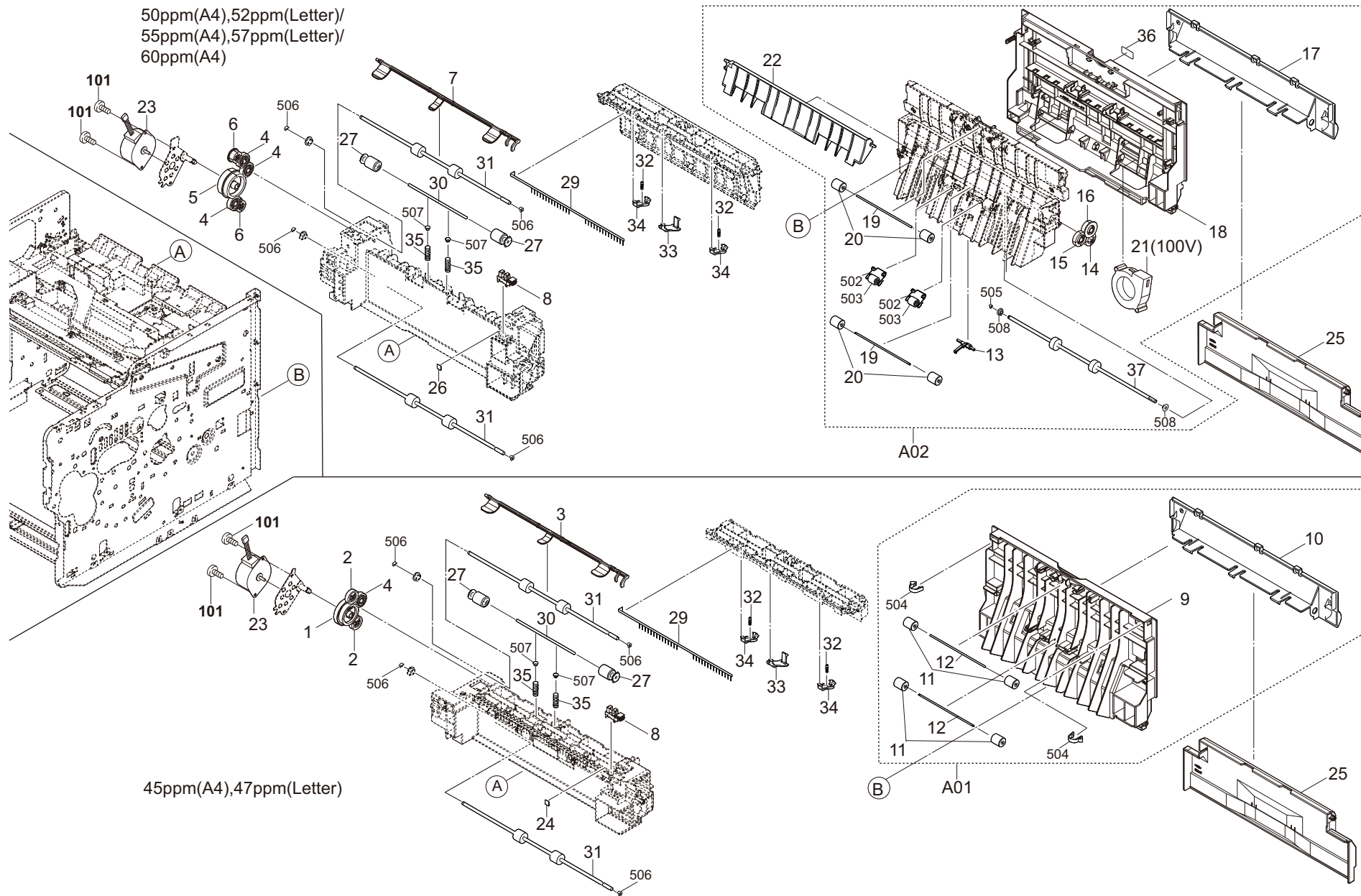


FIG. 9 Exit\_section

2TT/2TS/2TR/2TP-1

Ref No.	Part.No.	Description	Notes	Revision	Quantity			
					100	120	230	240
1	302L228041	GEAR Z66R Z34S	45ppm(A4),47ppm(Letter)		1	1	1	1
2	302L228030	GEAR Z21S EXIT	45ppm(A4),47ppm(Letter)		2	2	2	2
3	302L228090	ACTUATOR OVERFLOW	45ppm(A4),47ppm(Letter)		1	1	1	1
4	302LV28050	GEAR Z22S	45ppm(A4),47ppm(Letter)		1	1	1	1
4	302LV28050	GEAR Z22S	50ppm(A4),52ppm(Letter)/55ppm(A4),57ppm(Letter)/60ppm(A4)		3	3	3	3
5	302LV28031	GEAR Z66R-Z40S	50ppm(A4),52ppm(Letter)/55ppm(A4),57ppm(Letter)/60ppm(A4)		1	1	1	1
6	302LV28040	GEAR Z17S	50ppm(A4),52ppm(Letter)/55ppm(A4),57ppm(Letter)/60ppm(A4)		2	2	2	2
7	302LV28141	ACTUATOR OVERFLOW	50ppm(A4),52ppm(Letter)/55ppm(A4),57ppm(Letter)/60ppm(A4)		1	1	1	1
8	302P794010	PARTS SENSOR OPT SP			1	1	1	1
A01	302TT94010	PARTS COVER REAR ASSY SP	45ppm(A4),47ppm(Letter)		1	1	1	1
9	•3V2L204041	COVER REAR UP	45ppm(A4),47ppm(Letter)		1	1	1	1
10	•302TP04210	COVER REAR LOW	45ppm(A4),47ppm(Letter)		1	1	1	1
11	•302K325320	PULLEY EXIT FUSER	45ppm(A4),47ppm(Letter)		4	4	4	4
12	•3V2LV28270	SHAFT EXIT LOW	45ppm(A4),47ppm(Letter)		2	2	2	2
A02	302TP94060	PARTS COVER REAR ASSY SP JP	60ppm(A4)		1			
A02	302TP94020	PARTS COVER REAR ASSY SP	50ppm(A4),52ppm(Letter)/55ppm(A4),57ppm(Letter)/60ppm(A4)			1	1	1
13	•3V2LV28070	ACTUATOR DU	50ppm(A4),52ppm(Letter)/55ppm(A4),57ppm(Letter)/60ppm(A4)		1	1	1	1
14	•302LV28090	GEAR Z20S	50ppm(A4),52ppm(Letter)/55ppm(A4),57ppm(Letter)/60ppm(A4)		1	1	1	1
15	•302LV28191	GEAR Z22S B	50ppm(A4),52ppm(Letter)/55ppm(A4),57ppm(Letter)/60ppm(A4)		1	1	1	1
16	•302LV28100	GEAR Z22S A	50ppm(A4),52ppm(Letter)/55ppm(A4),57ppm(Letter)/60ppm(A4)		1	1	1	1
17	•302TP04210	COVER REAR LOW	50ppm(A4),52ppm(Letter)/55ppm(A4),57ppm(Letter)/60ppm(A4)		1	1	1	1
18	•302LV04100	COVER REAR UP	50ppm(A4),52ppm(Letter)/55ppm(A4),57ppm(Letter)/60ppm(A4)		1	1	1	1
19	•3V2LV28270	SHAFT EXIT LOW	50ppm(A4),52ppm(Letter)/55ppm(A4),57ppm(Letter)/60ppm(A4)		2	2	2	2
20	•302K325320	PULLEY EXIT FUSER	50ppm(A4),52ppm(Letter)/55ppm(A4),57ppm(Letter)/60ppm(A4)		4	4	4	4
21	•302FZ94660	PARTS,FAN IMAGE SP	60ppm(A4)		1			
22	•3V2LV28081	GUIDE CHANGE	50ppm(A4),52ppm(Letter)/55ppm(A4),57ppm(Letter)/60ppm(A4)	1:Correction	1	1	1	1
36	•302MC34040	LABEL PUSH		1:Add	1	1	1	1
37	•302WD94020	PARTS ROLLER REAR SP		1:Add	1	1	1	1
23	302T994050	PARTS MOTOR EJECT SP			1	1	1	1
24	302L228110	SEAL EXIT	45ppm(A4),47ppm(Letter)		1	1	1	1
25	302TP04230	COVER CASSETTE			1	1	1	1
26	302LV28461	SEAL EXIT C	50ppm(A4),52ppm(Letter)/55ppm(A4),57ppm(Letter)/60ppm(A4)		1	1	1	1
27	3V2LV28150	PULLEY EXIT			2	2	2	2





FIG. 10 Drive section

2TT/2TS/2TR/2TP

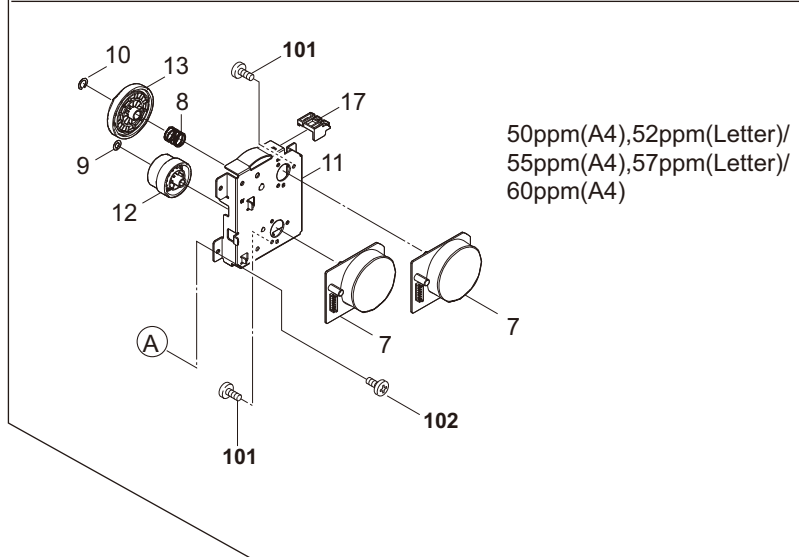
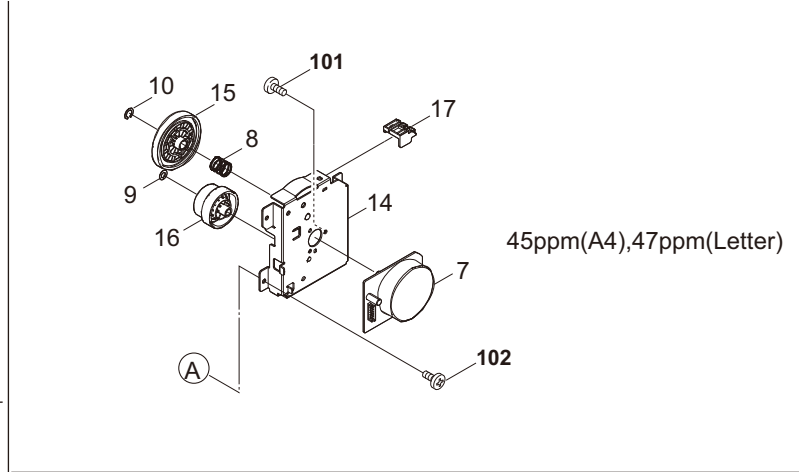
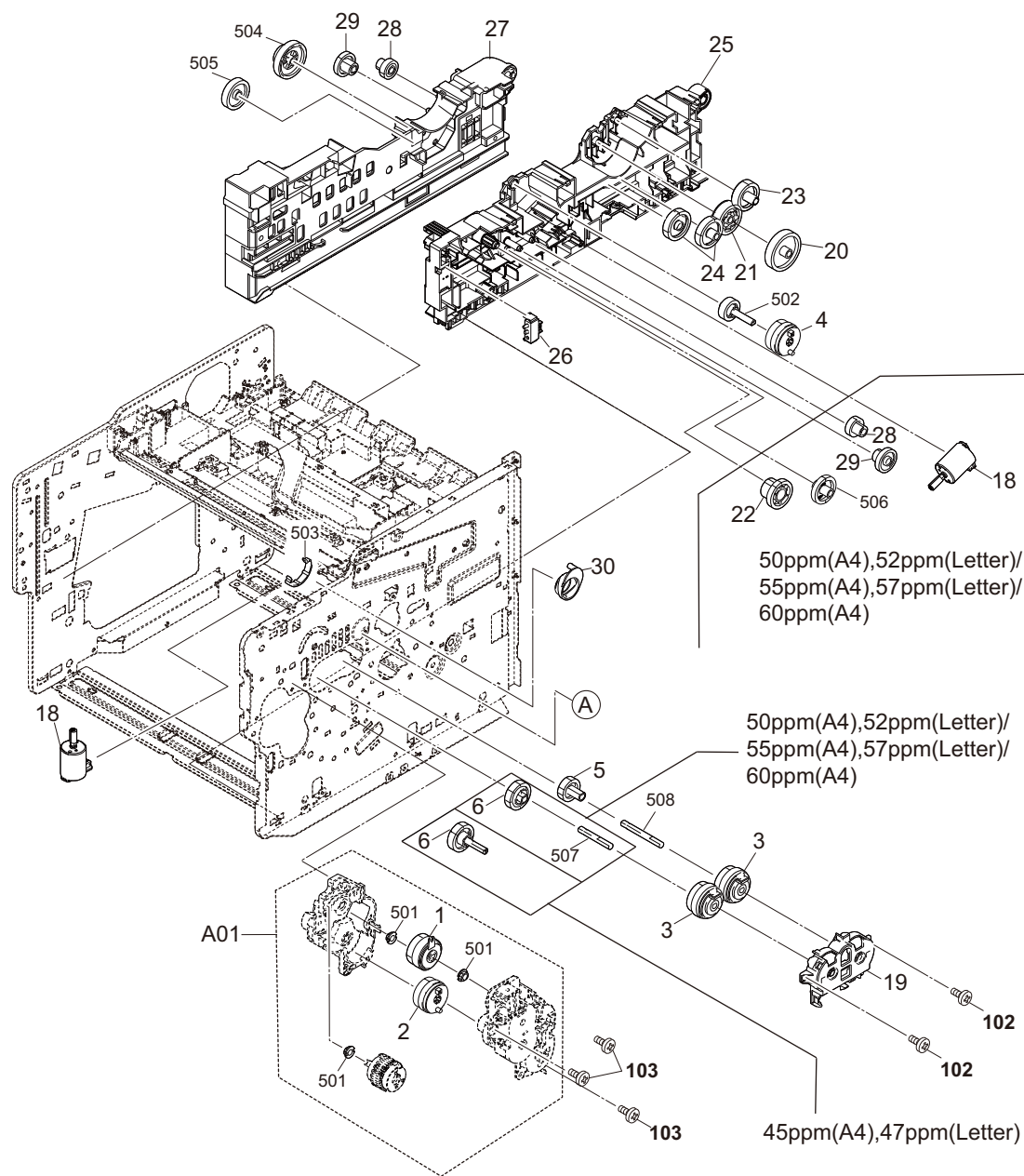


FIG. 10 Drive section

2TT/2TS/2TR/2TP-1

Ref No.	Part.No.	Description	Notes	Revision	Quantity			
					100	120	230	240
A01	302LV94253	PARTS DRIVE FEED ASSY SP			1	1	1	1
1	•302NR94010	PARTS CLUTCH 35 Z35R SP			1	1	1	1
2	•302LV94161	PARTS CLUTCH 20-2W Z35R			1	1	1	1
3	302KV94520	PARTS CLUTCH 50 Z35R SP		1:Others	2	2	2	2
4	302LV94161	PARTS CLUTCH 20-2W Z35R			1	1	1	1
5	302LV31180	GEAR Z26L DLP CLUTCH			1	1	1	1
6	3V2LV31190	GEAR Z32L REG CLUTCH	45ppm(A4),47ppm(Letter)		1	1	1	1
6	302LV31440	GEAR Z32L REG CL	50ppm(A4),52ppm(Letter)/55ppm(A4),57ppm(Letter)/60ppm(A4)		1	1	1	1
7	302K394202	PARTS MOTOR-BL W30 SP	45ppm(A4),47ppm(Letter)		1	1	1	1
7	302K394202	PARTS MOTOR-BL W30 SP	50ppm(A4),52ppm(Letter)/55ppm(A4),57ppm(Letter)/60ppm(A4)		2	2	2	2
8	302LV31290	SPRING COUPLING DRUM			1	1	1	1
9	2C904550	CUT WASHER 5			1	1	1	1
10	302K914570	CUT WASHER 7			1	1	1	1
11	302LV31010	PLATE DRIVE	50ppm(A4),52ppm(Letter)/55ppm(A4),57ppm(Letter)/60ppm(A4)		1	1	1	1
12	302LV31060	GEAR Z80R-Z36L	50ppm(A4),52ppm(Letter)/55ppm(A4),57ppm(Letter)/60ppm(A4)		1	1	1	1
13	302LV31050	GEAR Z119R	50ppm(A4),52ppm(Letter)/55ppm(A4),57ppm(Letter)/60ppm(A4)		1	1	1	1
14	302L231030	PLATE DRIVE	45ppm(A4),47ppm(Letter)		1	1	1	1
15	302L231040	GEAR Z128R	45ppm(A4),47ppm(Letter)		1	1	1	1
16	302L231050	GEAR Z86R-Z36L	45ppm(A4),47ppm(Letter)		1	1	1	1
17	302LV39040	RAIL PWB MAIN B			1	1	1	1
18	302LV94230	PARTS DC MOTOR ASSY SP	50ppm(A4),52ppm(Letter)/55ppm(A4),57ppm(Letter)/60ppm(A4)		2	2	2	2
18	302LV94230	PARTS DC MOTOR ASSY SP	45ppm(A4),47ppm(Letter)		1	1	1	1
19	3V2P702110	HOLDER CLUTCH			1	1	1	1
20	3V2LV31120	GEAR Z46L FREE			1	1	1	1
21	3V2LV31130	GEAR Z37S FREE			1	1	1	1
22	3V2LV31490	GEAR Z35S-Z13S B	50ppm(A4),52ppm(Letter)/55ppm(A4),57ppm(Letter)/60ppm(A4)		1	1	1	1
23	302HN25180	GEAR Z34S INPUT			1	1	1	1
24	302HS31140	GEAR Z35R IDLE			2	2	2	2
25	3V2LV02043	GUIDE CASSETTE R			1	1	1	1
26	7SP03072001+H01	SW.PUSH			1	1	1	1
27	302T902011	GUIDE CASSETTE L	45ppm(A4),47ppm(Letter)		1	1	1	1
27	3V2LV02051	GUIDE CASSETTE L	50ppm(A4),52ppm(Letter)/55ppm(A4),57ppm(Letter)/60ppm(A4)	1:Others	1	1	1	1
28	302HN31030	GEAR Z36L-Z20S	45ppm(A4),47ppm(Letter)		1	1	1	1
28	302HN31030	GEAR Z36L-Z20S	50ppm(A4),52ppm(Letter)/55ppm(A4),57ppm(Letter)/60ppm(A4)		2	2	2	2
29	302HN31040	GEAR Z46S-Z13S	45ppm(A4),47ppm(Letter)		1	1	1	1
29	302HN31040	GEAR Z46S-Z13S	50ppm(A4),52ppm(Letter)/55ppm(A4),57ppm(Letter)/60ppm(A4)		2	2	2	2
30	3V2LV31300	LEVER COUPLING DRUM			1	1	1	1



FIG. 11 Wire Section 1

2TT/2TS/2TR/2TP-1

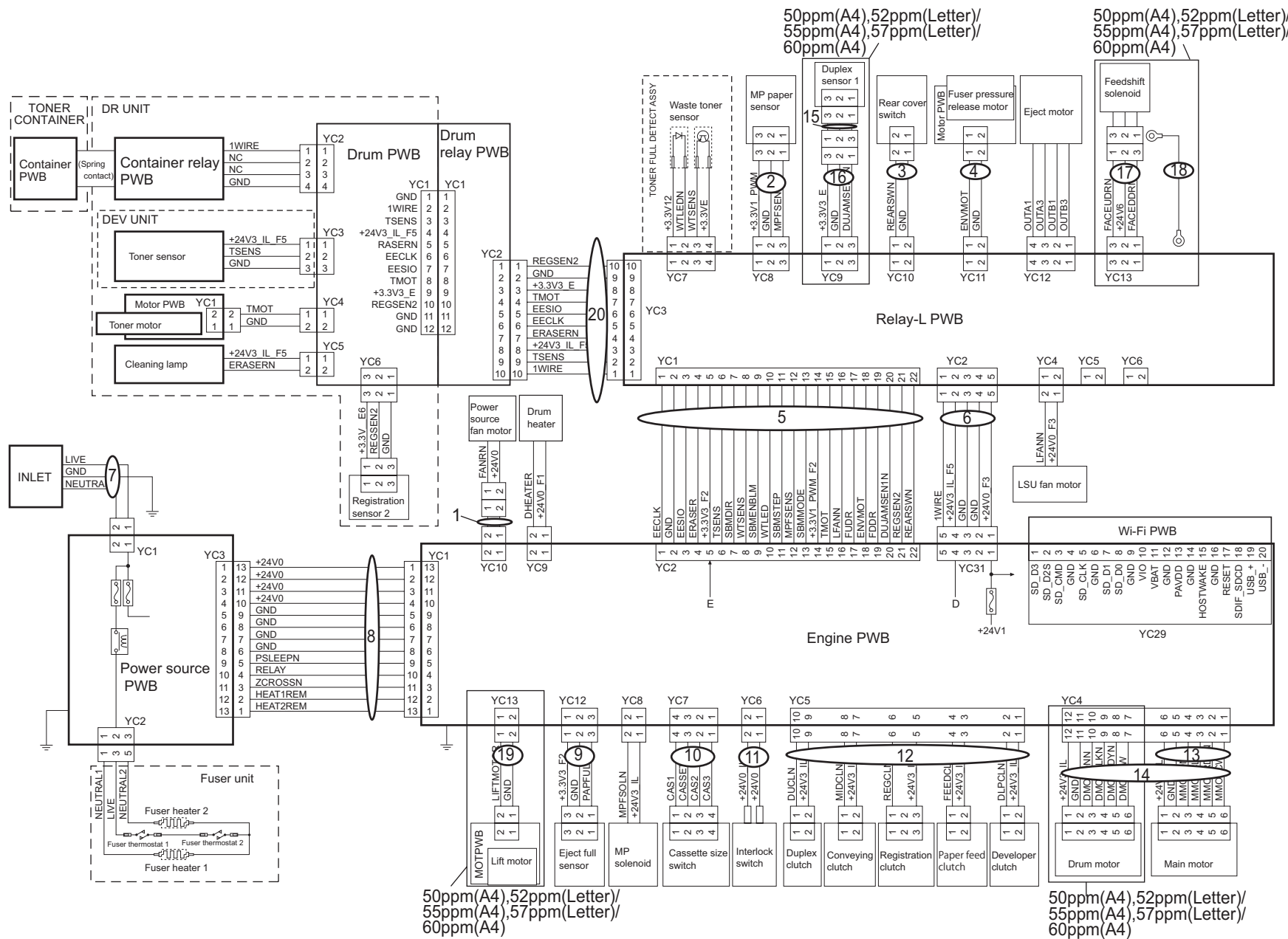


FIG. 11 Wire Section 1

2TT/2TS/2TR/2TP-1

Ref No.	Part.No.	Description	Notes	Revision	Quantity			
					100	120	230	240
1	302LV46510	CONN.CORD ASSY S03806			1	1	1	1
2	302LV46450	CONN.CORD ASSY S03687			1	1	1	1
3	302LV46210	CONN.CORD ASSY S03673			1	1	1	1
4	302LV46220	CONN.CORD ASSY S03674			1	1	1	1
5	302T646070	CONN.CORD ASSY FFC ENGINE CONNECT-L			1	1	1	1
6	302TP46090	CONN.CORD ASSY ENG CONN-L			1	1	1	1
7	302TP46050	CONN.CORD ASSY INLET			1	1	1	1
8	302LV46020	CONN.CORD ASSY S03654			1	1	1	1
9	302TT46010	CONN.CORD ASSY 03CT-03CT	45ppm(A4),47ppm(Letter)		1	1	1	1
9	302TP46070	CONN.CORD ASSY 03CT-03CT	50ppm(A4),52ppm(Letter)/55ppm(A4),57ppm(Letter)/60ppm(A4)		1	1	1	1
10	302LV46060	CONN.CORD ASSY S03658			1	1	1	1
11	302LV46070	CONN.CORD ASSY S03659			1	1	1	1
12	3V2P746180	WIRE CLUTCH			1	1	1	1
13	302L246020	CONN.CORD ASSY S03686	45ppm(A4),47ppm(Letter)		1	1	1	1
14	302LV46090	CONN.CORD ASSY S03661	50ppm(A4),52ppm(Letter)/55ppm(A4),57ppm(Letter)/60ppm(A4)		1	1	1	1
15	3V2LV46230	CONN.CORD ASSY S03675	50ppm(A4),52ppm(Letter)/55ppm(A4),57ppm(Letter)/60ppm(A4)		1	1	1	1
16	302LV46471	CONN.CORD ASSY S03794	50ppm(A4),52ppm(Letter)/55ppm(A4),57ppm(Letter)/60ppm(A4)		1	1	1	1
17	302LV46481	CONN.CORD ASSY S03795	50ppm(A4),52ppm(Letter)/55ppm(A4),57ppm(Letter)/60ppm(A4)		1	1	1	1
18	3V2LV46460	CONN.CORD ASSY S03786	50ppm(A4),52ppm(Letter)/55ppm(A4),57ppm(Letter)/60ppm(A4)		1	1	1	1
19	302LV46050	CONN.CORD ASSY S03657	50ppm(A4),52ppm(Letter)/55ppm(A4),57ppm(Letter)/60ppm(A4)		1	1	1	1
20	302T646020	CONN.CORD ASSY DRUM CONNECT-L		1:Add	1	1	1	1

• Wire Section indicates all the wires/FFCs containing them in other FIGs.

• Wire Section には全ての電線 /FFC (他 FIG の電線 /FFC 含む) を掲載しています。

FIG. 12 Wire Section 2

2TT/2TS/2TR/2TP-1

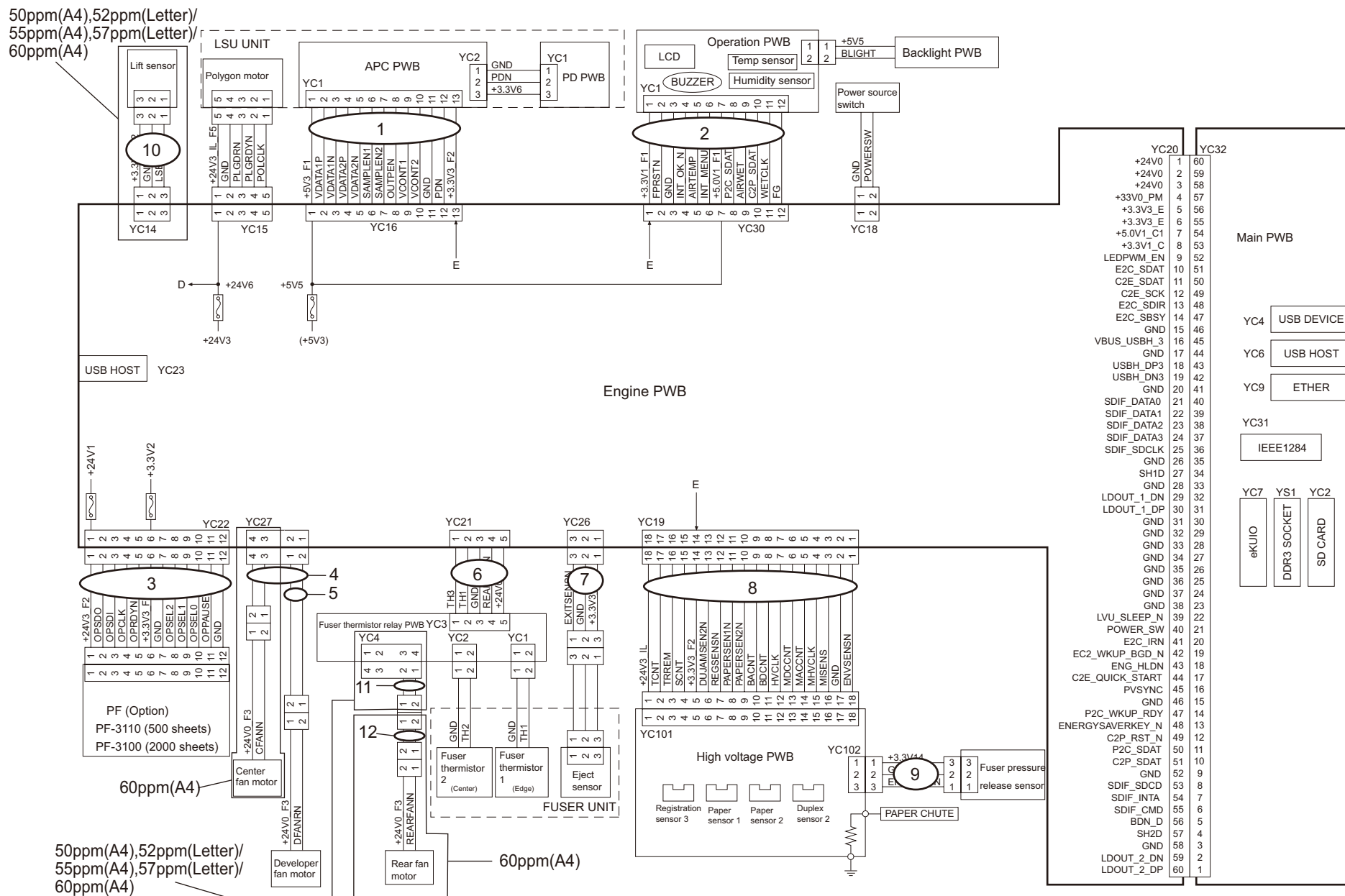


FIG. 12 Wire Section 2

2TT/2TS/2TR/2TP-1

Ref No.	Part.No.	Description	Notes	Revision	Quantity			
					100	120	230	240
1	302T646120	CONN.CORD ASSY FFC APC			1	1	1	1
2	302TP46060	CONN.CORD ASSY FFC PRN PANEL			1	1	1	1
3	302LV46040	CONN.CORD ASSY S03656			1	1	1	1
4	302TP46110	CONN.CORD ASSY DLP-CENTER FAN	60ppm(A4)		1			
5	302TP46130	CONN.CORD ASSY DLP FAN	45ppm(A4),47ppm(Letter)/50ppm(A4),52ppm(Letter)/55ppm(A4),57ppm(Letter)		1	1	1	1
6	302T646140	CONN.CORD ASSY FFC THCONNECT			1	1	1	1
7	302TP46080	CONN.CORD ASSY 03MCT-03CT			1	1	1	1
8	302LV46260	CONN.CORD ASSY S03678			1	1	1	1
9	302LV46430	CONN.CORD ASSY S03738			1	1	1	1
10	302LV46100	CONN.CORD ASSY S03662	50ppm(A4),52ppm(Letter)/55ppm(A4),57ppm(Letter)/60ppm(A4)		1	1	1	1
11	302T646110	CONN.CORD ASSY FAN	50ppm(A4),52ppm(Letter)/55ppm(A4),57ppm(Letter)/60ppm(A4)	1:Correction	1	1	1	1
12	302LV46500	CONN.CORD ASSY S03802	60ppm(A4)		1			

• Wire Section indicates all the wires/FFCs containing them in other FIGs.

• Wire Section には全ての電線 /FFC (他 FIG の電線 /FFC 含む) を掲載しています。

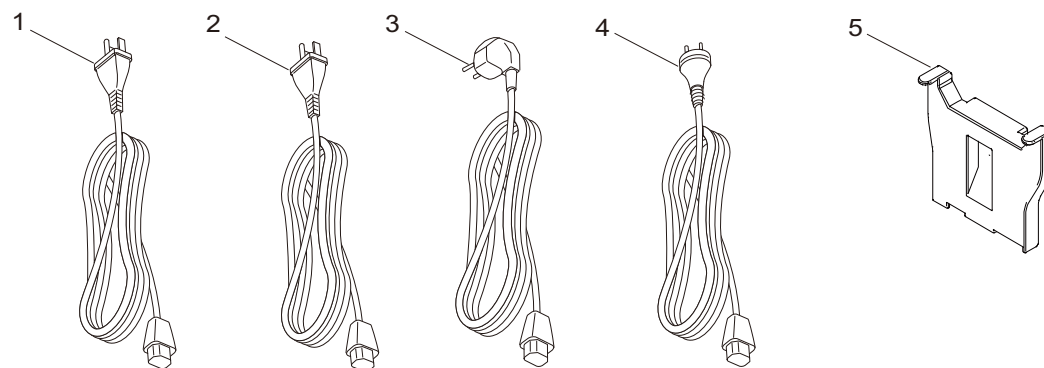






FIG. 14 Maintenance Kits (45ppm(A4),47ppm(Letter))

2TT/2TS/2TR/2TP

Ref No.	Part.No.	Description	Notes	Revision	Quantity			
					100	120	230	240
	1702TG8NLO	MK-3260/MAINTENANCE KIT	OPTION				1	
	•302F909171	RETARD ROLLER ASSY					1	
	•3V2LV09311	HOLDER RETARD B					1	
	•302LV09340	GUIDE RETARD C					1	
	•302LV09330	SPRING RETARD B					1	
	•302LV93081	DV-3100					1	
	•302LV94270	PARTS HOLDER FEED ASSY SP					1	
	•302LV94130	PARTS ROLLER TRANSFER SP					1	
	•302LV24140	GEAR Z22R TC					1	
	•302T993061	DK-3170(E)					1	
	•302V393040	FK-3200					1	
	1702V38AS0	MK-3264/MAINTENANCE KIT	OPTION					1
	•302F909171	RETARD ROLLER ASSY						1
	•3V2LV09311	HOLDER RETARD B						1
	•302LV09340	GUIDE RETARD C						1
	•302LV09330	SPRING RETARD B						1
	•302LV93081	DV-3100						1
	•302LV94270	PARTS HOLDER FEED ASSY SP						1
	•302LV94130	PARTS ROLLER TRANSFER SP						1
	•302LV24140	GEAR Z22R TC						1
	•302T993091	DK-3174(AO)						1
	•302V393040	FK-3200						1
	1702V37US0	MK-3262/MAINTENANCE KIT	OPTION			1		
	•302F909171	RETARD ROLLER ASSY				1		
	•3V2LV09311	HOLDER RETARD B				1		
	•302LV09340	GUIDE RETARD C				1		
	•302LV09330	SPRING RETARD B				1		
	•302LV93081	DV-3100				1		
	•302LV94270	PARTS HOLDER FEED ASSY SP				1		
	•302LV94130	PARTS ROLLER TRANSFER SP				1		
	•302LV24140	GEAR Z22R TC				1		
	•302T993071	DK-3172(U)				1		
	•302V393060	FK-3202				1		
	1702V39JP0	MK-3261/MAINTENANCE KIT	OPTION		1			
	•302F909171	RETARD ROLLER ASSY			1			
	•3V2LV09311	HOLDER RETARD B			1			
	•302LV09340	GUIDE RETARD C			1			
	•302LV09330	SPRING RETARD B			1			
	•302LV93081	DV-3100			1			
	•302LV94270	PARTS HOLDER FEED ASSY SP			1			
	•302LV94130	PARTS ROLLER TRANSFER SP			1			
	•302LV24140	GEAR Z22R TC			1			
	•302T993081	DK-3171(J)			1			
	•302V393050	FK-3201			1			

FIG. 15 Maintenance Kits (50ppm(A4),52ppm(Letter)/55ppm(A4),57ppm(Letter)/60ppm(A4),62ppm(Letter))

2TT/2TS/2TR/2TP

Ref No.	Part.No.	Description	Notes	Revision	Quantity			
					100	120	230	240
	1702TA7US0	MK-3302/MAINTENANCE KIT	OPTION:50ppm(A4),52ppm(Letter)/55ppm(A4),57ppm(Letter)			1		
	•302F909171	RETARD ROLLER ASSY				1		
	•3V2LV09311	HOLDER RETARD B				1		
	•302LV09340	GUIDE RETARD C				1		
	•302LV09330	SPRING RETARD B				1		
	•302LV94270	PARTS HOLDER FEED ASSY SP				1		
	•302LV94130	PARTS ROLLER TRANSFER SP				1		
	•302LV24140	GEAR Z22R TC				1		
	•302T693041	DK-3192(U)				1		
	•302LV93081	DV-3100				1		
	•302TA93050	FK-3302				1		
	1702TA8NL0	MK-3300/MAINTENANCE KIT	OPTION:50ppm(A4),52ppm(Letter)/55ppm(A4),57ppm(Letter)				1	
	•302F909171	RETARD ROLLER ASSY					1	
	•3V2LV09311	HOLDER RETARD B					1	
	•302LV09340	GUIDE RETARD C					1	
	•302LV09330	SPRING RETARD B					1	
	•302LV94270	PARTS HOLDER FEED ASSY SP					1	
	•302LV94130	PARTS ROLLER TRANSFER SP					1	
	•302LV24140	GEAR Z22R TC					1	
	•302T693031	DK-3190(E)					1	
	•302LV93081	DV-3100					1	
	•302TA93040	FK-3300					1	
	1702TA8AS0	MK-3304/MAINTENANCE KIT	OPTION:50ppm(A4),52ppm(Letter)/55ppm(A4),57ppm(Letter)					1
	•302F909171	RETARD ROLLER ASSY						1
	•3V2LV09311	HOLDER RETARD B						1
	•302LV09340	GUIDE RETARD C						1
	•302LV09330	SPRING RETARD B						1
	•302LV94270	PARTS HOLDER FEED ASSY SP						1
	•302LV24140	GEAR Z22R TC						1
	•302LV94130	PARTS ROLLER TRANSFER SP						1
	•302T693061	DK-3194(AO)						1
	•302LV93081	DV-3100						1
	•302TA93040	FK-3300						1
	1702TA9JP0	MK-3301/MAINTENANCE KIT	OPTION:60ppm(A4)		1			
	•302F909171	RETARD ROLLER ASSY			1			
	•3V2LV09311	HOLDER RETARD B			1			
	•302LV09340	GUIDE RETARD C			1			
	•302LV09330	SPRING RETARD B			1			
	•302LV94270	PARTS HOLDER FEED ASSY SP			1			
	•302LV94130	PARTS ROLLER TRANSFER SP			1			
	•302LV24140	GEAR Z22R TC			1			
	•302T693051	DK-3191(J)			1			
	•302LV93081	DV-3100			1			
	•302TP93020	FK-3301			1			

## INDEX

2TT/2TS/2TR/2TP-1

Part.No.	Description	Fig.No.
1702TA7US0	MK-3302/MAINTENANCE KIT	15
1702TA8AS0	MK-3304/MAINTENANCE KIT	15
1702TA8NLO	MK-3300/MAINTENANCE KIT	15
1702TA9JPO	MK-3301/MAINTENANCE KIT	15
1702TG8NLO	MK-3260/MAINTENANCE KIT	14
1702V37US0	MK-3262/MAINTENANCE KIT	14
1702V38AS0	MK-3264/MAINTENANCE KIT	14
1702V39JPO	MK-3261/MAINTENANCE KIT	14
2C904550	CUT WASHER 5	10
2FB27160	INTER LOCK SWITCH	2
3019527401	POWER CORD(120)	13
302F906030	GEAR FEED Z26H	4
302F906230	PULLEY FEED ASSY	4
302F906280	GEAR FEED Z30H	4
302F906290	SHAFT FEED R	4
302F908250	PAD SEPARATOR MPF	4
302F908311	PAD FRICTION MPF	4
302F909171	RETARD ROLLER ASSY	3, 14, 15
302F909211	PAD BOTTOM	3
302F924190	BUSH TRANSFER R	5
302F939082	SCREW BOX	2
302FB09830	CUT WASHER 4	5
302FV45040	AC CORD ASSY	13
302FV94010	PARTS AC CORD EU SP	13
302FZ94420	PARTS,FAN COOLING CONVEYING SP	2
302FZ94660	PARTS,FAN IMAGE SP	9
302GR44080	FAN LSU 60-25	2
302H024370	BUSH 6 EW	4
302H702590	BUSH SCREW	5
302HN02611	FOOT	2
302HN06080	PULLEY PICKUP ASSY	4
302HN25180	GEAR Z34S INPUT	10
302HN31030	GEAR Z36L-Z20S	10
302HN31040	GEAR Z46S-Z13S	10
302HS08260	ROLLER M/P ASSY	4
302HS31140	GEAR Z35R IDLE	10
302K306460	BUSH 4	4
302K325320	PULLEY EXIT FUSER	9
302K394202	PARTS MOTOR-BL W30 SP	10
302K914570	CUT WASHER 7	10
302KV94520	PARTS CLUTCH 50 Z35R SP	10
302L228030	GEAR Z21S EXIT	9
302L228041	GEAR Z66R Z34S	9
302L228090	ACTUATOR OVERFLOW	9
302L228110	SEAL EXIT	9
302L231030	PLATE DRIVE	10
302L231040	GEAR Z128R	10
302L231050	GEAR Z86R-Z36L	10
302L246020	CONN.CORD ASSY S03686	11
302L294030	PARTS HIGH VOLTAGE UNIT SP	5
302LV02110	STOPPER PROCESS	6

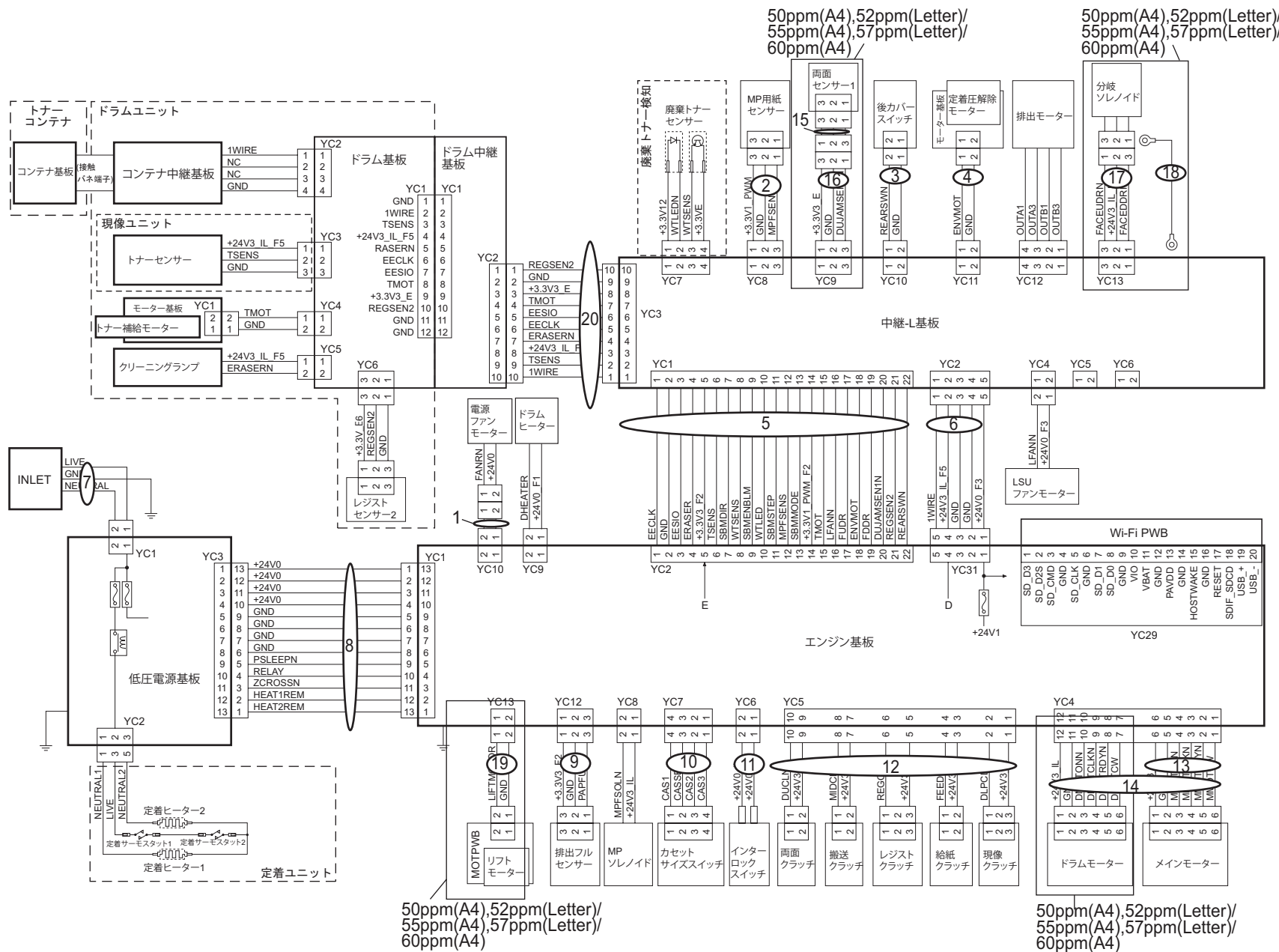
Part.No.	Description	Fig.No.
302LV02200	STOPPER PROCESS L	6
302LV02610	SHEET FAN L	2
302LV04100	COVER REAR UP	9
302LV06010	GUIDE FEED UP	4
302LV08080	PLATE BOTTOM MPF	4
302LV08110	SPRING SEPARATION MPF	4
302LV08120	SPRING BOTTOM MPF L	4
302LV08130	SPRING BOTTOM MPF R	4
302LV08150	GUIDE TURN MPF A	4
302LV08180	ACTUATOR MPF	4
302LV08201	SPRING ACTUATOR MPF	4
302LV08220	SHEET GUIDE TURN A	4
302LV09071	CURSOR LEFT	3
302LV09201	COVER LIFT GEAR	3
302LV09220	GEAR Z15S JOINT	3
302LV09241	GEAR Z48S LIFT	3
302LV09330	SPRING RETARD B	3, 14, 15
302LV09340	GUIDE RETARD C	3, 14, 15
302LV09351	CURSOR RIGHT B	3
302LV11240	GUIDE CONTAINER	2
302LV24060	BRUSH DC CHARGE	5
302LV24100	ACTUATOR IMAGE	5
302LV24140	GEAR Z22R TC	5, 14, 15
302LV24150	GEAR Z22L REGIST LOW	5
302LV24160	GEAR Z19R-Z22R REGIST UP	5
302LV24220	SHEET REGIST	5
302LV24230	SPRING MIDDLE	4
302LV24280	SPRING TRANSFER R	5
302LV24290	SPRING TRANSFER L	5
302LV24350	BUSH REGIST LOW L	5
302LV24360	BUSH TRANSFER L	5
302LV24420	SPRING IMAGE SENSOR	5
302LV24450	ACTUATOR ENVELOPE	5
302LV24460	SHAFT ENVELOPE	5
302LV24520	BUSH 6 EW	5
302LV24530	BUSH REGIST LOW R	5
302LV24660	SPRING EARTH REG B	5
302LV24760	PULLEY PA	4
302LV28031	GEAR Z66R-Z40S	9
302LV28040	GEAR Z17S	9
302LV28050	GEAR Z22S	9
302LV28090	GEAR Z20S	9
302LV28100	GEAR Z22S A	9
302LV28141	ACTUATOR OVERFLOW	9
302LV28191	GEAR Z22S B	9
302LV28461	SEAL EXIT C	9
302LV29090	ACTUATOR PE	4
302LV31010	PLATE DRIVE	10
302LV31050	GEAR Z119R	10
302LV31060	GEAR Z80R-Z36L	10
302LV31180	GEAR Z26L DLP CLUTCH	10

Part.No.	Description	Fig.No.
302LV31290	SPRING COUPLING DRUM	10
302LV31440	GEAR Z32L REG CL	10
302LV34210	LABEL LEVER A	1
302LV39040	RAIL PWB MAIN B	10
302LV46020	CONN.CORD ASSY S03654	11
302LV46040	CONN.CORD ASSY S03656	12
302LV46050	CONN.CORD ASSY S03657	11
302LV46060	CONN.CORD ASSY S03658	11
302LV46070	CONN.CORD ASSY S03659	11
302LV46090	CONN.CORD ASSY S03661	11
302LV46100	CONN.CORD ASSY S03662	12
302LV46210	CONN.CORD ASSY S03673	11
302LV46220	CONN.CORD ASSY S03674	11
302LV46260	CONN.CORD ASSY S03678	12
302LV46430	CONN.CORD ASSY S03738	12
302LV46450	CONN.CORD ASSY S03687	11
302LV46471	CONN.CORD ASSY S03794	11
302LV46481	CONN.CORD ASSY S03795	11
302LV46500	CONN.CORD ASSY S03802	12
302LV46510	CONN.CORD ASSY S03806	11
302LV93011	MC-3100	6
302LV93020	WT-3100	6
302LV93081	DV-3100	7, 14, 15
302LV94060	PARTS HIGH VOLTAGE UNIT SP	5
302LV94121	PARTS TONER FULL DETECT ASSY SP	6
302LV94130	PARTS ROLLER TRANSFER SP	5, 14, 15
302LV94161	PARTS CLUTCH 20-2W Z35R	10
302LV94170	PARTS ROLLER REGIST LOW SP	5
302LV94180	PARTS ROLLER REGIST UP SP	5
302LV94210	PARTS PWB ASSY SWITCH SP	2
302LV94220	PARTS PWB ASSY TH CONNECT SP	2
302LV94230	PARTS DC MOTOR ASSY SP	10
302LV94253	PARTS DRIVE FEED ASSY SP	10
302LV94261	PARTS GUIDE PAPER CHUTE SP	5
302LV94270	PARTS HOLDER FEED ASSY SP	4, 14, 15
302LV94330	PARTS GUIDE PAPER CHUTE SP JP	5
302LV94350	PARTS FAN MOTOR SP	2
302LV94430	PARTS FAN MOTOR ASSY SP	2
302LV94530	PARTS ROLLER DU ASSY SP	4
302MC34040	LABEL PUSH	9
302NR94010	PARTS CLUTCH 35 Z35R SP	10
302P794010	PARTS SENSOR OPT SP	9
302P794090	PARTS ROLLER MIDDLE SET SP	5
302S018491	EMBLEM	1
302T604071	STOPPER LID TOP	1
302T604080	SPRING STOPPER LID TOP	1
302T646020	CONN.CORD ASSY DRUM CONNECT-L	11
302T646070	CONN.CORD ASSY FFC ENGINE CONNECT-L	11
302T646110	CONN.CORD ASSY FAN	12
302T646120	CONN.CORD ASSY FFC APC	12
302T646140	CONN.CORD ASSY FFC THCONNECT	12

Part.No.	Description	Fig.No.
302T693011	LK-3190	2
302T693031	DK-3190(E)	6, 15
302T693041	DK-3192(U)	6, 15
302T693051	DK-3191(J)	6, 15
302T693061	DK-3194(AO)	6, 15
302T694070	PARTS PWB ASSY CONNECT-L SP	2
302T694080	PARTS PWB ASSY DRUM CONNECT SP	5
302T694100	PARTS UNIT POWER SUPPLY 120 SP	2
302T694110	PARTS UNIT POWER SUPPLY 230 SP	2
302T902011	GUIDE CASSETTE L	10
302T993041	LK-3170	2
302T993061	DK-3170(E)	6, 14
302T993071	DK-3172(U)	6, 14
302T993081	DK-3171(J)	6, 14
302T993091	DK-3174(AO)	6, 14
302T994040	PARTS PWB ASSY CONNECT-L SP	2
302T994050	PARTS MOTOR EJECT SP	9
302TA93040	FK-3300	8, 15
302TA93050	FK-3302	8, 15
302TP04010	LID TOP	1
302TP04020	LID TOP FRONT	1
302TP04030	COVER TOP	1
302TP04050	COVER FRONT	5
302TP04060	COVER LEFT	1
302TP04070	COVER RIGHT	1
302TP04080	COVER CABLE	1
302TP04100	COVER CONTROLLER	1
302TP04130	COVER SIDE	1
302TP04140	PAPER STOPPER	1
302TP04160	COVER TOP B	1
302TP04170	PANEL LCD	1
302TP04180	COVER REAR TOP	1
302TP04200	COVER LEFT REAR	1
302TP04210	COVER REAR LOW	9
302TP04221	COVER RIGHT REAR LOW	1
302TP04230	COVER CASSETTE	9
302TP05050	PANEL OPERATION	1
302TP09050	CURSOR END STMT	13
302TP28090	SPONGE EXIT	1
302TP34010	SHEET MACHINE NUMBER	1
302TP46050	CONN.CORD ASSY INLET	11
302TP46060	CONN.CORD ASSY FFC PRN PANEL	12
302TP46070	CONN.CORD ASSY 03CT-03CT	11
302TP46080	CONN.CORD ASSY 03MCT-03CT	12
302TP46090	CONN.CORD ASSY ENG CONN-L	11
302TP46110	CONN.CORD ASSY DLP-CENTER FAN	12
302TP46130	CONN.CORD ASSY DLP FAN	12
302TP93011	CT-3230	3
302TP93020	FK-3301	8, 15
302TP94010	PARTS COVER MPF ASSY SP	5
302TP94020	PARTS COVER REAR ASSY SP	9

Part.No.	Description	Fig.No.
302TP94050	PARTS TRAY TOP ASSY SP	1
302TP94060	PARTS COVER REAR ASSY SP JP	9
302TP94070	PARTS PWB ASSY MAIN SP EU	2
302TP94080	PARTS PWB ASSY MAIN SP	2
302TP94090	PARTS PWB ASSY ENGINE SP	2
302TP94100	PARTS PWB ASSY PANEL SP	1
302TR34010	SHEET MACHINE NUMBER	1
302TR94010	PARTS PWB ASSY ENGINE SP	2
302TS34010	SHEET MACHINE NUMBER	1
302TS94010	PARTS PWB ASSY ENGINE SP	2
302TT04010	LID TOP	1
302TT04020	LID TOP FRONT	1
302TT04040	COVER TOP B	1
302TT04050	COVER RIGHT	1
302TT04060	COVER LEFT	1
302TT04080	COVER TOP	1
302TT04090	COVER TOP C	1
302TT04100	COVER REAR TOP	1
302TT34020	SHEET MACHINE NUMBER	1
302TT46010	CONN.CORD ASSY 03CT-03CT	11
302TT93011	CT-3200	3
302TT94010	PARTS COVER REAR ASSY SP	9
302TT94020	PARTS TRAY TOP ASSY SP	1
302TT94030	PARTS PWB ASSY ENGINE SP	2
302V393040	FK-3200	8, 14
302V393050	FK-3201	8, 14
302V393060	FK-3202	8, 14
302WD94020	PARTS ROLLER REAR SP	9
303M894260	PARTS SENSOR OPT SP	4
3V2A807050	GEAR CASSETTE	3
3V2L204041	COVER REAR UP	9
3V2L206010	GUIDE FEED UP 40	4
3V2LV02043	GUIDE CASSETTE R	10
3V2LV02051	GUIDE CASSETTE L	10
3V2LV02131	DUCT FAN LV	2
3V2LV02830	SHUTTER WASTE	6
3V2LV02990	COVER SENSOR	8
3V2LV06030	GUIDE FEED SIDE	4
3V2LV06090	SPRING PICKUP B	4
3V2LV08070	HOLDER SEPARATION MPF	4
3V2LV08090	LEVER CAM MPF	4
3V2LV08100	LEVER LINK	5
3V2LV08210	PULLEY FEED	4
3V2LV09090	CURSOR END	3
3V2LV09311	HOLDER RETARD B	3, 14, 15
3V2LV24111	ACTUATOR DU	5
3V2LV24120	LEVER EMPTY	5
3V2LV24130	GEAR Z32L MIDDLE	5
3V2LV24440	LOCK ENVELOPE L	5
3V2LV24510	LOCK ENVELOPE R	5
3V2LV28070	ACTUATOR DU	9

Part.No.	Description	Fig.No.
3V2LV28081	GUIDE CHANGE	9
3V2LV28120	ROLLER FD UP	9
3V2LV28150	PULLEY EXIT	9
3V2LV28160	DISCHARGER FD	9
3V2LV28180	GUIDE FD A	9
3V2LV28200	SPRING PULLEY EXIT	9
3V2LV28270	SHAFT EXIT LOW	9
3V2LV28352	GUIDE FD B	9
3V2LV28360	SHAFT EXIT	9
3V2LV28400	SPRING GUIDE FD	9
3V2LV31080	GEAR Z35L	5
3V2LV31120	GEAR Z46L FREE	10
3V2LV31130	GEAR Z37S FREE	10
3V2LV31190	GEAR Z32L REG CLUTCH	10
3V2LV31300	LEVER COUPLING DRUM	10
3V2LV31490	GEAR Z35S-Z13S B	10
3V2LV46230	CONN.CORD ASSY S03675	11
3V2LV46460	CONN.CORD ASSY S03786	11
3V2P702110	HOLDER CLUTCH	10
3V2P746180	WIRE CLUTCH	11
7AAACCJP+12H009	AC CORD ASSY JP	13
7SP01000006+H01	SW.PUSH	2
7SP03072001+H01	SW.PUSH	10



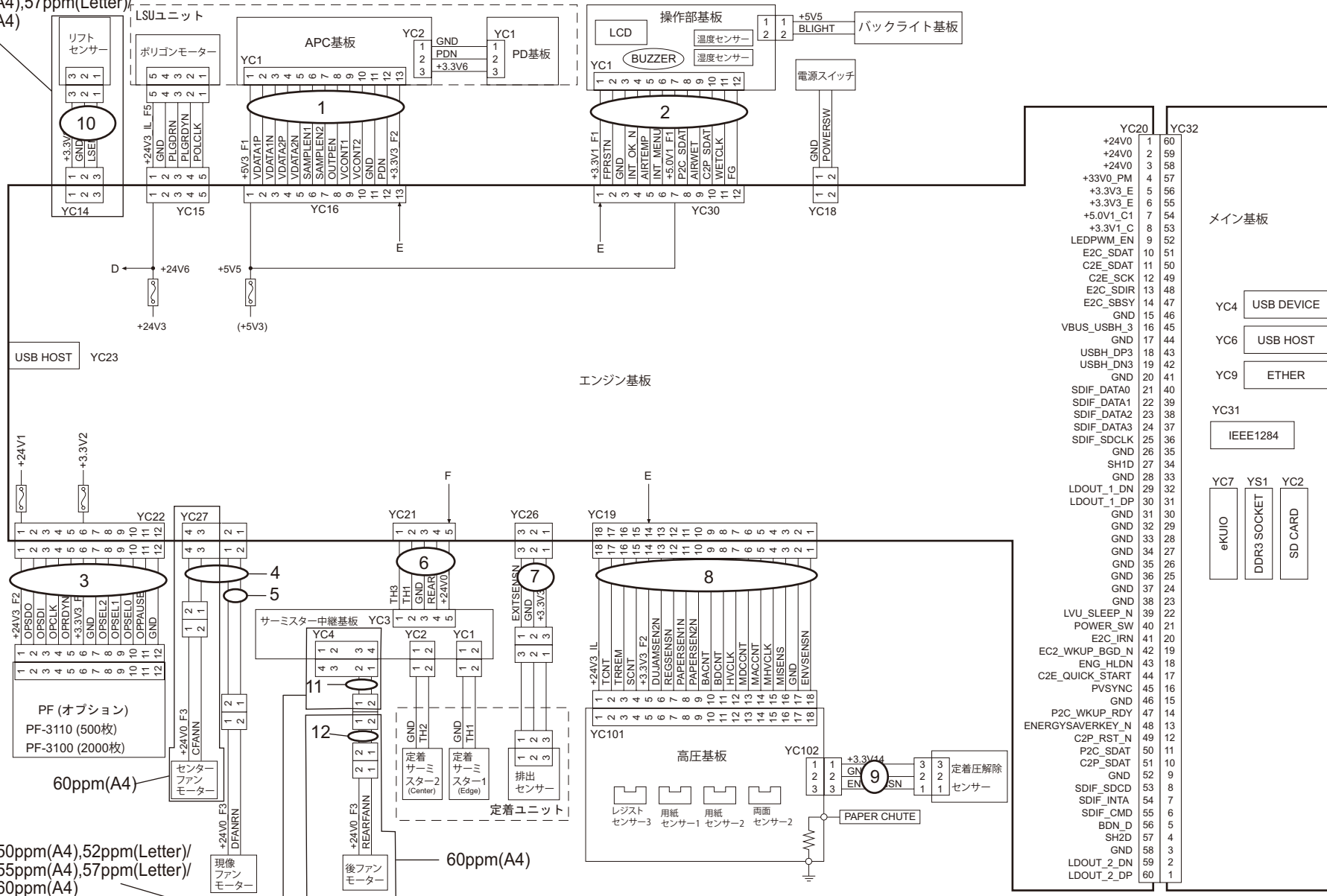




Appendix.2 Wire Section 2 (JA)

2TT/2TS/2TR/2TP-1

50ppm(A4),52ppm(Letter)/  
55ppm(A4),57ppm(Letter)/  
60ppm(A4)



50ppm(A4),52ppm(Letter)/  
55ppm(A4),57ppm(Letter)/  
60ppm(A4)

60ppm(A4)

60ppm(A4)

Appendix.2 Wire Section 2 (JA)

2TT/2TS/2TR/2TP-1

Ref No.	Part.No.	Description	Notes	Revision	Quantity			
					100	120	230	240
1	302T646120	CONN.CORD ASSY FFC APC			1	1	1	1
2	302TP46060	CONN.CORD ASSY FFC PRN PANEL			1	1	1	1
3	302LV46040	CONN.CORD ASSY S03656			1	1	1	1
4	302TP46110	CONN.CORD ASSY DLP-CENTER FAN	60ppm(A4)		1			
5	302TP46130	CONN.CORD ASSY DLP FAN	45ppm(A4),47ppm(Letter)/50ppm(A4),52ppm(Letter)/ 55ppm(A4),57ppm(Letter)		1	1	1	1
6	302T646140	CONN.CORD ASSY FFC THCONNECT			1	1	1	1
7	302TP46080	CONN.CORD ASSY 03MCT-03CT			1	1	1	1
8	302LV46260	CONN.CORD ASSY S03678			1	1	1	1
9	302LV46430	CONN.CORD ASSY S03738			1	1	1	1
10	302LV46100	CONN.CORD ASSY S03662	50ppm(A4),52ppm(Letter)/55ppm(A4),57ppm(Letter)/ 60ppm(A4)		1	1	1	1
11	302T646110	CONN.CORD ASSY FAN	50ppm(A4),52ppm(Letter)/55ppm(A4),57ppm(Letter)/ 60ppm(A4)	1:Correction	1	1	1	1
12	302LV46500	CONN.CORD ASSY S03802	60ppm(A4)		1			

• Wire Section indicates all the wires/FFCs containing them in other FIGs.

• Wire Section には全ての電線 /FFC (他 FIG の電線 /FFC 含む) を掲載しています。

---

# **PB-325**

July 2017  
Rev.1

**[CONFIDENTIAL]**

FOR AUTHORIZED KYOCERA ENGINEERS ONLY. DO NOT DISTRIBUTE TO NON-AUTHORIZED PARTIES.

**Items listed in the revision columns are defined as follows.**

Item	Description
Add	Add a new part
Del	Delete a part
Design-chg.	A design changed part (Parts number version up)
Part No-chg.	A part number is changed to other one.
Quantity-chg.	Change Quantity of parts to use
Others	Other changes
Correction	Correction

**Revision history**

Rev.	Date	Remarks

**Symbols in the parts list**

- Parts without a Ref.No. in the illustration indicate they are not supplied.
- Parts with a Ref.No. of 500 and above in the illustration indicate they are not selected for service parts.
- Parts with "\*" are component parts or sub-assemblies of the assembly appearing immediately above them.
- Parts with "••" are component parts or sub-assembly with "\*" appearing immediately above them.

**[CONFIDENTIAL]**

京セラドキュメントソリューションズ株式会社の許可なく、本資料を配布することを禁じます。

**改訂欄記載項目の内容は以下の通りです。**

記載項目	内容
Add	新規部品の追加
Del	部品の削除
Design-chg.	部品の設変（版数アップ）
Part No-chg.	部品番号の変更
Quantity-chg.	部品の個数変更
Others	その他の変更
Correction	誤記訂正

**改訂履歴**

Rev.	改訂日	備考

**記号の見方**

イラスト中で Ref 番号がない部品は供給できません。  
イラスト中で 500 番台の Ref 番号が付いている部品はサービスパーツに選定されていません。  
部品番号欄の・印は、組立部品の単品部品及び準組立部品を表わします。  
部品番号欄の••印は、準組立部品の単品部品を表わします。

—— CONTENTS ——

FIG. 1 PB-325 ..... 2

FIG. 1 PB-325

3N1-1

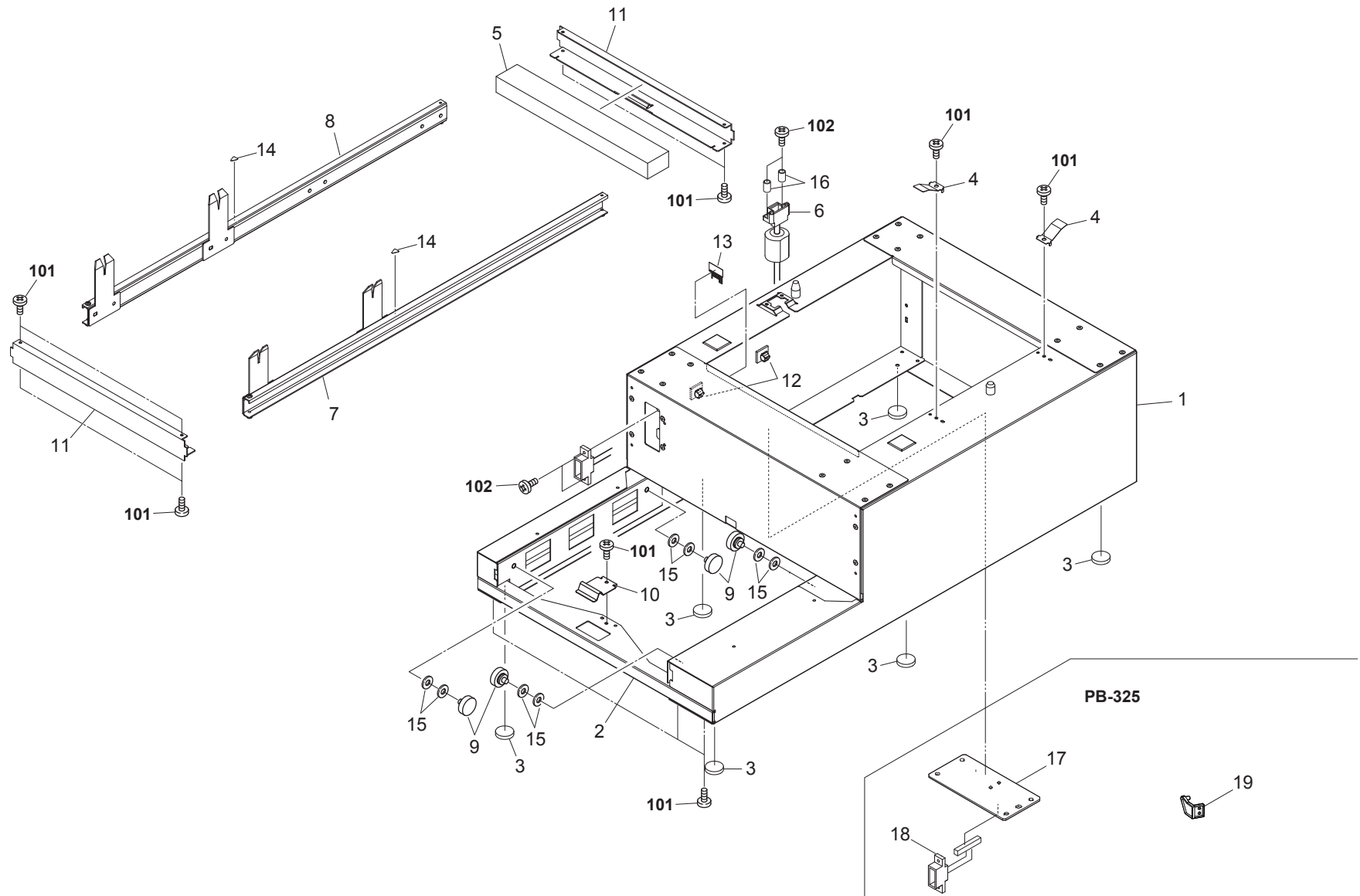


FIG. 1 PB-325

3N1-1

Ref No.	Part.No.	Description	Notes	Revision	Quantity			
					100	120	230	240
1	303N100030	BASE ASSY			1	1	1	1
2	303N110100	STAY MAIN			1	1	1	1
3	303KT10100	FOOT			6	6	6	6
4	303N110170	PLATE EARTH STAY			2	2	2	2
5	303KT10120	PAD RAIL			1	1	1	1
6	303N146010	CONN.CORD ASSY S03798			1	1	1	1
7	303KT00060	RAIL R ASSY			1	1	1	1
8	303KT00050	RAIL L ASSY			1	1	1	1
9	5AAZPF7A++01	ROLLER DL			4	4	4	4
10	5MMP153LD001	STOPPER PF			1	1	1	1
11	303N110110	STAY RAIL			2	2	2	2
12	7YZM390007++H01	ACCESS.CLAMP			5	5	5	5
13	303N110120	DISCHARGER PB			1	1	1	1
14	303N110150	LABEL LEVER			2	2	2	2
15	7BC00060D0A+H01	WASHER M6X13X1T			8	8	8	8
16	7BC300304060H01	COLLAR SPACER A /3X4X6			2	2	2	2
17	303N194010	PARTS PWB ASSY PB SP			1	1	1	1
18	303N146020	CONN.CORD ASSY S03799			1	1	1	1
19	303N110160	STOPPER CAM		1: Add	1	1	1	1
101	5MBTPB3006TW++R	BIND T.T SCREW(+ ) / M3 X 6 CRFREE S-T						
102	5MBTPB3012TW++R	BIND T.T SCREW(+ ) / M3 X 12 CRFREE S-T						

---

# PF-3100

October 2018  
Rev.2



**[CONFIDENTIAL]**

FOR AUTHORIZED KYOCERA ENGINEERS ONLY. DO NOT DISTRIBUTE TO NON-AUTHORIZED PARTIES.

**Items listed in the revision columns are defined as follows.**

Item	Description
Add	Add a new part
Del	Delete a part
Design-chg.	A design changed part (Parts number version up)
Part No-chg.	A part number is changed to other one.
Quantity-chg.	Change Quantity of parts to use
Others	Other changes
Correction	Correction

**Revision history**

Rev.	Date	Remarks
2	October 2018	Design change

**Symbols in the parts list**

- Parts without a Ref.No. in the illustration indicate they are not supplied.
- Parts with a Ref.No. of 500 and above in the illustration indicate they are not selected for service parts.
- Parts with "\*" are component parts or sub-assemblies of the assembly appearing immediately above them.
- Parts with "\*\*" are component parts or sub-assembly with "\*" appearing immediately above them.

**[CONFIDENTIAL]**

京セラドキュメントソリューションズ株式会社の許可なく、本資料を配布することを禁じます。

**改訂欄記載項目の内容は以下の通りです。**

記載項目	内容
Add	新規部品の追加
Del	部品の削除
Design-chg.	部品の設変（版数アップ）
Part No-chg.	部品番号の変更
Quantity-chg.	部品の個数変更
Others	その他の変更
Correction	誤記訂正

**改訂履歴**

Rev.	改訂日	備考
2	2018年10月	設変対応

**記号の見方**

イラスト中で Ref 番号がない部品は供給できません。  
イラスト中で 500 番台の Ref 番号が付いている部品はサービスパーツに選定されていません。  
部品番号欄の・印は、組立部品の単品部品及び準組立部品を表わします。  
部品番号欄の\*\*印は、準組立部品の単品部品を表わします。

—— CONTENTS ——

FIG. 1 PF-3100 ..... 2

FIG. 1 PF-3100

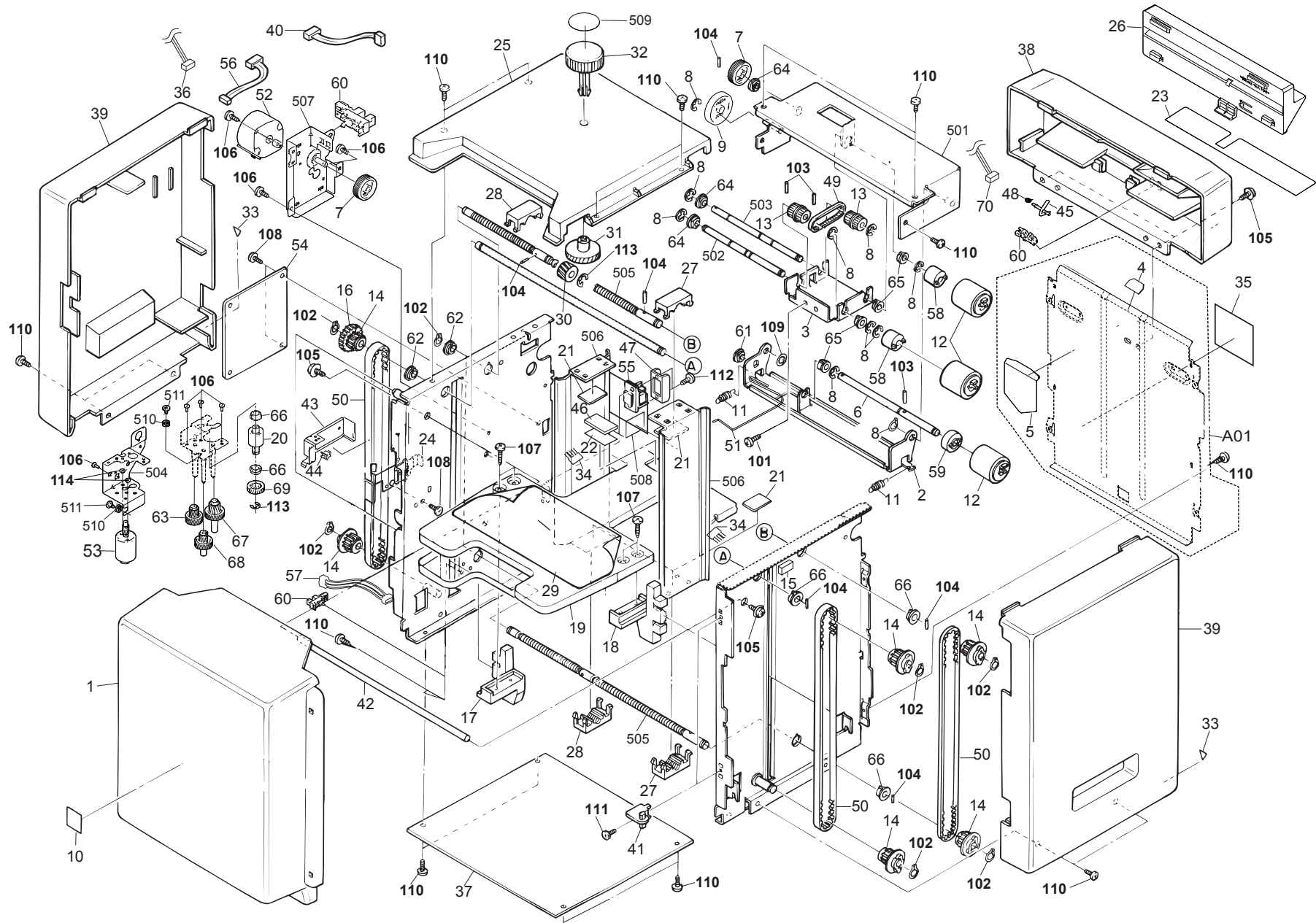


FIG. 1 PF-3100

3S3-2

Ref No.	Part.No.	Description	Notes	Revision	Quantity			
					100	120	230	240
1	303S304030	COVER TRAY			1	1	1	1
2	303KF10050	FRAME FEED LOW			1	1	1	1
3	303KF10040	BKT PICK			1	1	1	1
A01	303S394010	PARTS STAY FRONT ASSY SP			1	1	1	1
4	*303KF10170	PAD FRONT SEP			1	1	1	1
5	*303KF10180	SHEET FRONT SEP			1	1	1	1
6	303S306050	SHAFT FEED LOW			1	1	1	1
7	303S331050	GEAR Z56R			2	2	2	2
8	5MVX111DN003	RING STOPPER/A-49 FEED A4			10	10	10	10
9	303S331020	GEAR Z77L			1	1	1	1
10	303KF04090	SEAL TRAY			1	1	1	1
11	303KF10160	SPRING FEED/AE116 A4			1	1	1	1
12	5AAMPF7A++03	ROLLER ASSY		2: Quantity-chg.	2	2	2	2
13	5MVG337DN002	PULLY P20-P21			3	3	3	3
14	5MVG318DN001	PULLEY XL14			2	2	2	2
15	303KF10140	SPACER			6	6	6	6
16	5MVG138DN018	GEAR WHEEL H30			1	1	1	1
17	5MVX665DN001	GUIDE ELEVATOR R			1	1	1	1
18	5MVX665DN002	GUIDE ELEVATOR L			1	1	1	1
19	303KF10060	TABLE PAPER			1	1	1	1
20	5MVG117DN001	GEAR WORM			1	1	1	1
21	303S310030	ADAPTER NUT		1: Part No.-chg.	4	4	4	4
22	303S310050	SPACER PAD			1	1	1	1
23	303KF06010	SHEET EXIT			1	1	1	1
24	303S331130	ACTUATOR TRAY DOWN			1	1	1	1
25	303S304020	COVER TOP			1	1	1	1
26	303S304040	COVER FEED 2			1	1	1	1
27	5MVX422DN002	NUT GUIDE R			2	2	2	2
28	5MVX422DN003	NUT GUIDE L			2	2	2	2
29	303S334020	LABEL ADJUST			1	1	1	1
30	5MVG127DN030	GEAR H15-R			1	1	1	1
31	5MVG134DN001	GEAR H30-R			1	1	1	1
32	303S304050	KNOB SIZE			1	1	1	1
33	5MVVL111WN02	LEVER LABEL			2	2	2	2
34	303KF04120	DISCHARGER TP			2	2	2	2
35	5MVVL665WN01	LABEL HAND CAUTION			1	1	1	1
36	303S346030	CONN.CORD ASSY MOTOR FEED			1	1	1	1
37	303KF10110	PLATE BOTTOM			1	1	1	1
38	303S304060	COVER FEED			1	1	1	1
39	303KF04051	COVER SIDE			2	2	2	2
40	303S346050	CONN.CORD ASSY UPLIMIT			1	1	1	1
41	5MVX332DN002	PIVOT TRAY			2	2	2	2
42	5MMT866SN016	SHAFT STAY F			1	1	1	1
43	303S302050	BRACKET SWITCH			1	1	1	1
44	7SP01000006+H01	SW.PUSH			1	1	1	1
45	303S306020	ACTUATOR FEED			1	1	1	1



---

# PF-3110

December 2018  
Rev.1

**[CONFIDENTIAL]**

FOR AUTHORIZED KYOCERA ENGINEERS ONLY. DO NOT DISTRIBUTE TO NON-AUTHORIZED PARTIES.

**Items listed in the revision columns are defined as follows.**

Item	Description
Add	Add a new part
Del	Delete a part
Design-chg.	A design changed part (Parts number version up)
Part No.-chg.	A part number is changed to other one.
Quantity-chg.	Change Quantity of parts to use
Others	Other changes
Correction	Correction

**Revision history**

Rev.	Date	Remarks
1	December 2018	Design change

**Symbols in the parts list**

- Parts without a Ref.No. in the illustration indicate they are not supplied.
- Parts with a Ref.No. of 500 and above in the illustration indicate they are not selected for service parts.
- Parts with "\*" are component parts or sub-assemblies of the assembly appearing immediately above them.
- Parts with "\*\*" are component parts or sub-assembly with "\*" appearing immediately above them.

**[CONFIDENTIAL]**

京セラドキュメントソリューションズ株式会社の許可なく、本資料を配布することを禁じます。

**改訂欄記載項目の内容は以下の通りです。**

記載項目	内容
Add	新規部品の追加
Del	部品の削除
Design-chg.	部品の設変(版数アップ)
Part No.-chg.	部品番号の変更
Quantity-chg.	部品の個数変更
Others	その他の変更
Correction	誤記訂正

**改訂履歴**

Rev.	改訂日	備考
1	2018年12月	設変対応

**記号の見方**

- イラスト中で Ref 番号がない部品は供給できません。  
 イラスト中で 500 番台の Ref 番号が付いている部品はサービスパーツに  
 選定されていません。  
 部品番号欄の・印は、組立部品の単品部品及び準組立部品を表わします。  
 部品番号欄の\*\*印は、準組立部品の単品部品を表わします。

———— **CONTENTS** ————

FIG. 1 Paper Feed Section ..... 2  
FIG. 2 Paper Cassette ..... 4  
FIG. 3 Wire Section ..... 6

• INDEX ..... 8



FIG. 1 Paper Feed Section

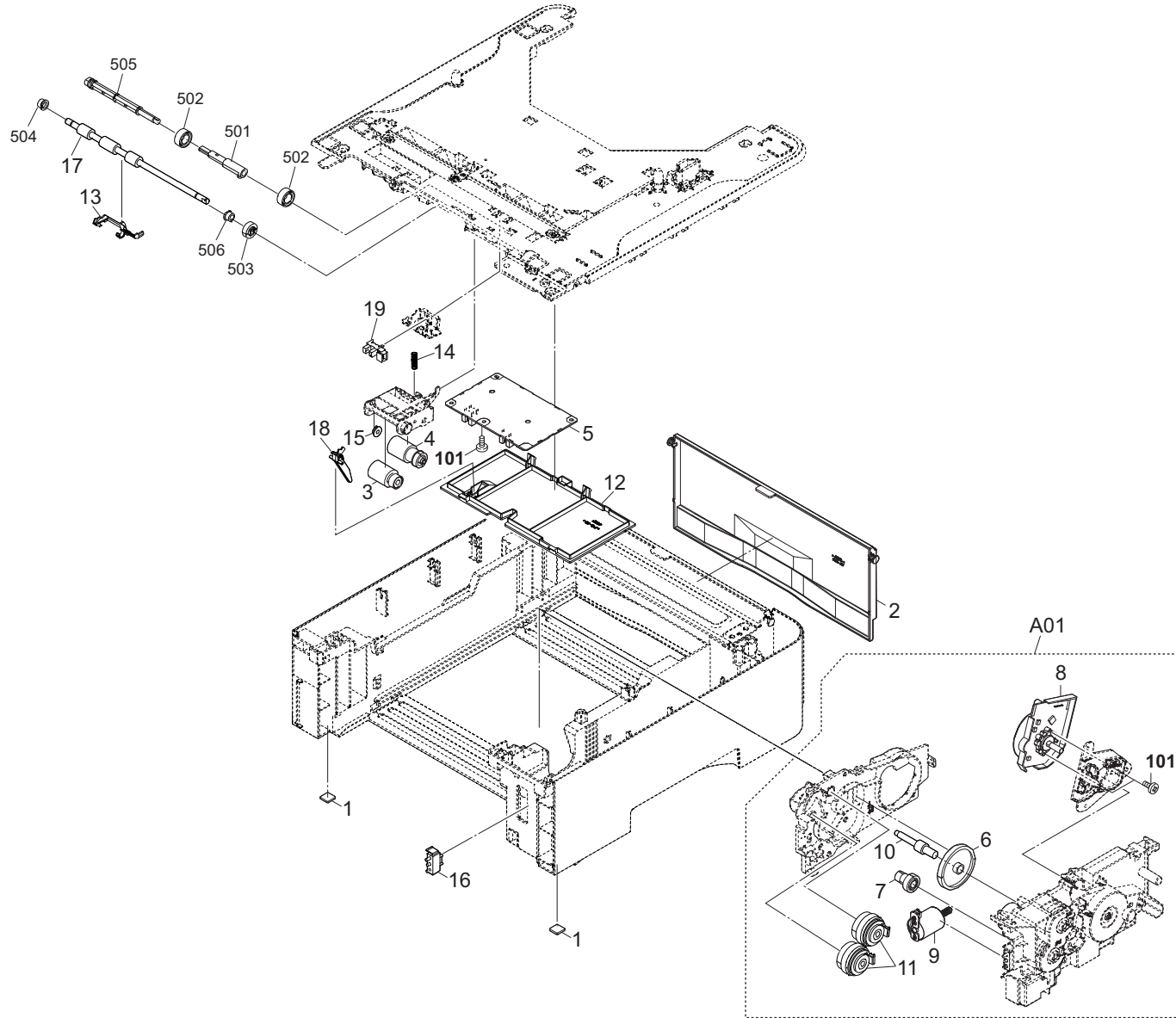


FIG. 1 Paper Feed Section

3SA-1

Ref No.	Part.No.	Description	Notes	Revision	Quantity			
					100	120	230	240
1	302HN02611	FOOT			2	2	2	2
2	303SA04010	COVER REAR			1	1	1	1
3	302F906230	PULLEY FEED ASSY			1	1	1	1
4	302HN06080	PULLEY PICKUP ASSY			1	1	1	1
5	303NY94011	PARTS PWB ASSY PF MAIN SP			1	1	1	1
A01	303NY94041	PARTS DRIVE ASSY SP		1:Design-chg.	1	1	1	1
6	+303K831040	GEAR Z58L			1	1	1	1
7	+303K831261	GEAR Z36R Z20S			1	1	1	1
8	+302K994324	PARTS MOTOR-BL W20 SP		1:Design-chg.	1	1	1	1
9	+303NY01020	DC MOTOR ASSY			1	1	1	1
10	+303NY31120	PIN DRIVE			1	1	1	1
11	+302KV44041	CLUTCH 50 Z35R			2	2	2	2
12	303K802081	COVER TOP			1	1	1	1
13	303K806030	ACTUATOR FEED			1	1	1	1
14	303NY06060	SPRING PICKUP B			1	1	1	1
15	302K306460	BUSH 4			1	1	1	1
16	7SP03072001+H01	SW.PUSH			1	1	1	1
17	303K806080	ROLLER MIDDLE ASSY			1	1	1	1
18	303NY06030	ACTUATOR PE			1	1	1	1
19	7NXSG2A141++H01	SENSOR OPT.			1	1	1	1
101	7BB202308H	+TP-FLAT T.T P SCREW 3X8						

FIG. 2 Paper Cassette

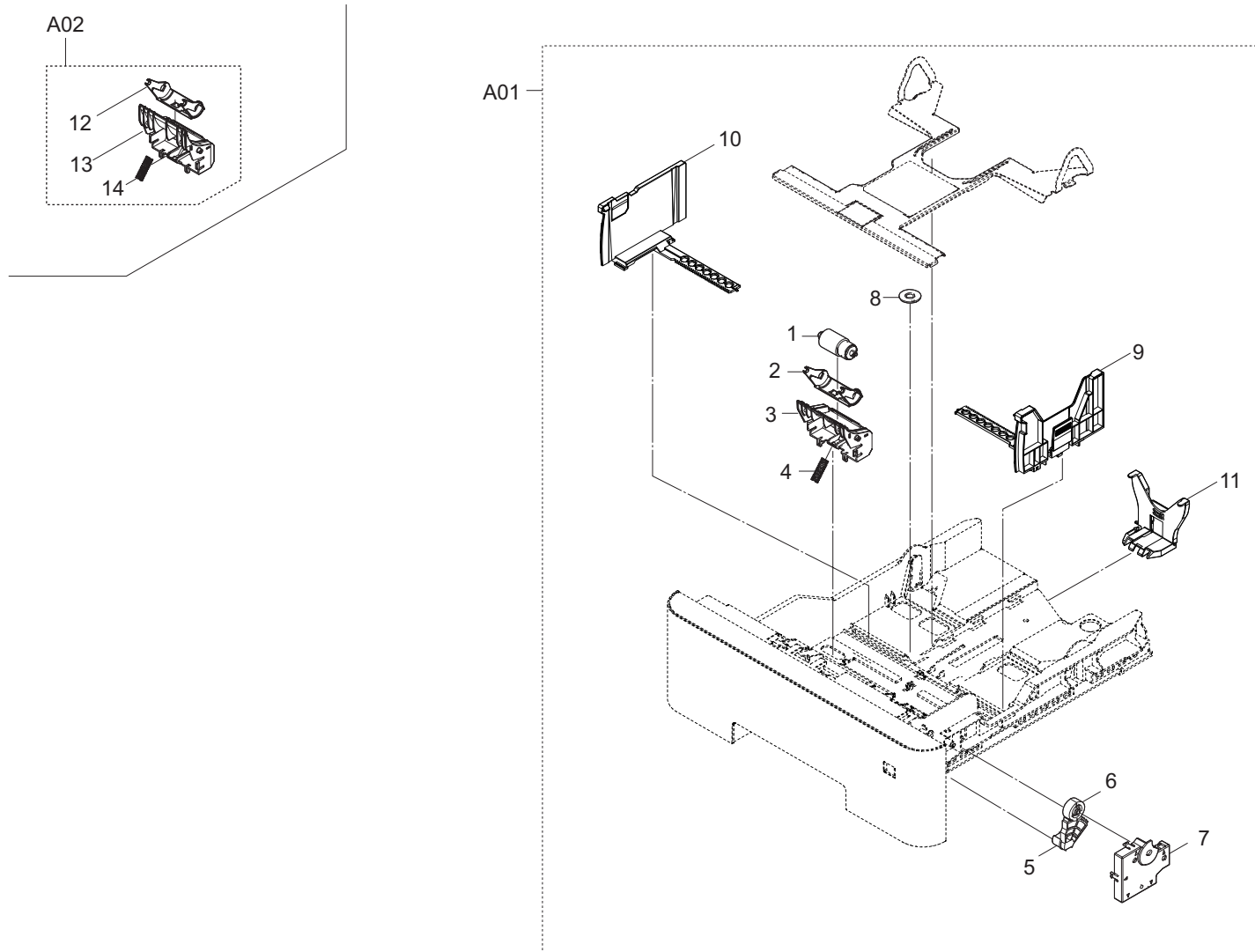
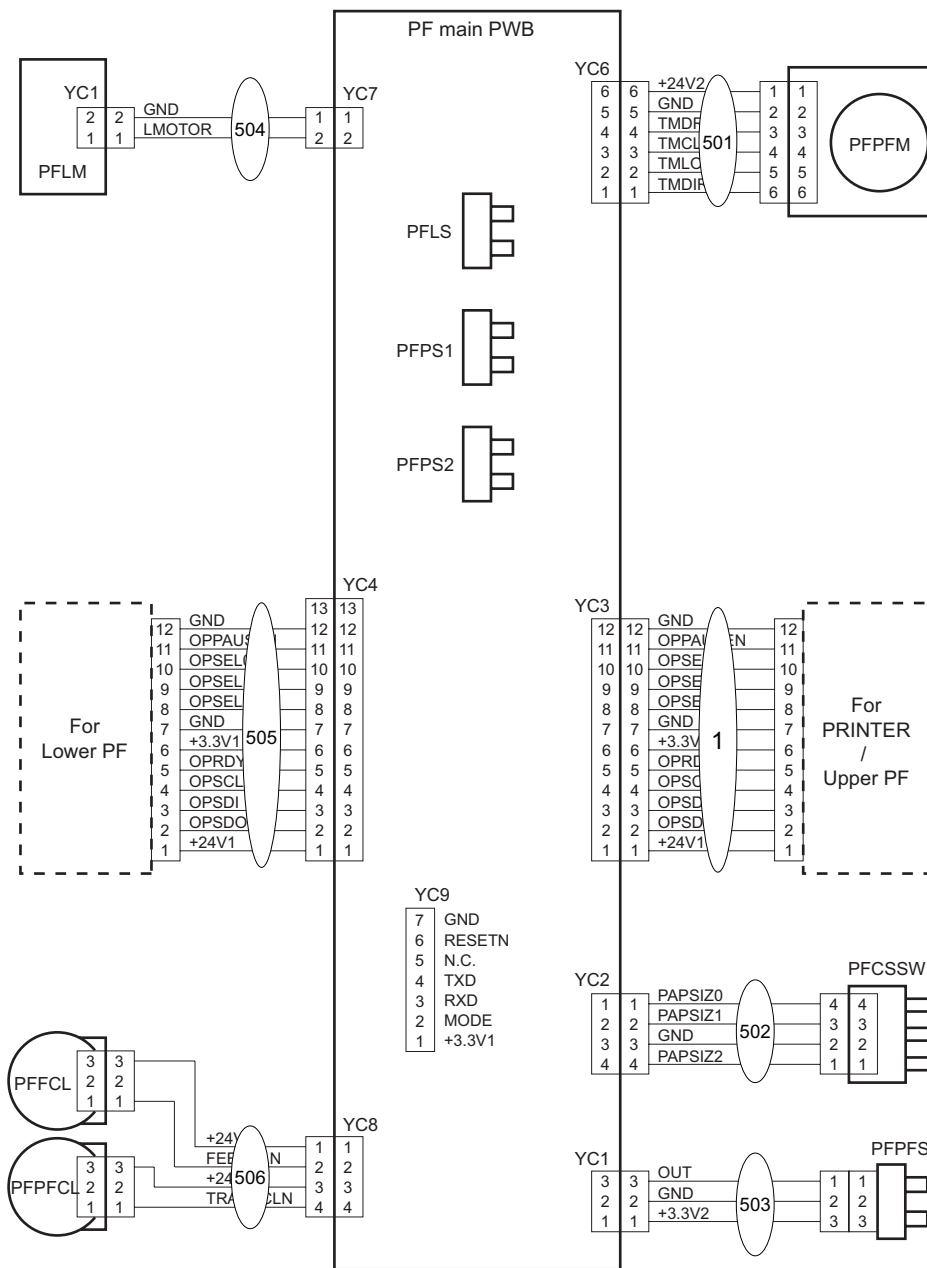


FIG. 2 Paper Cassette

3SA-1

Ref No.	Part.No.	Description	Notes	Revision	Quantity			
					100	120	230	240
A01	303SA93011	CT-3110		1:Design-chg.	1	1	1	1
1	*302F909171	RETARD ROLLER ASSY			1	1	1	1
2	*3V2LV09311	HOLDER RETARD B			1	1	1	1
3	*303NY09190	GUIDE RETARD B			1	1	1	1
4	*302LV09330	SPRING RETARD B			1	1	1	1
5	*302LV09241	GEAR Z48S LIFT			1	1	1	1
6	*303NY09091	GEAR Z15S JOINT			1	1	1	1
7	*303NY09040	COVER LIFT GEAR			1	1	1	1
8	*5MVG127DN071	GEAR CASSETTE /A-49 CASSETTE A4			1	1	1	1
9	*302LV09061	CURSOR RIGHT			1	1	1	1
10	*302LV09070	CURSOR LEFT			1	1	1	1
11	*3V2P709150	CURSOR END			1	1	1	1
A02	303NY94030	PARTS HOLDER RETARD B SET SP			1	1	1	1
12	*3V2LV09311	HOLDER RETARD B			1	1	1	1
13	*303NY09190	GUIDE RETARD B			1	1	1	1
14	*302LV09330	SPRING RETARD B			1	1	1	1

FIG. 3 Wire Section







---

# PT-320

August 2016  
First Edition



**[CONFIDENTIAL]**

FOR AUTHORIZED KYOCERA ENGINEERS ONLY. DO NOT DISTRIBUTE TO NON-AUTHORIZED PARTIES.

**Items listed in the revision columns are defined as follows.**

Item	Description
Add	Add a new part
Del	Delete a part
Design-chg.	A design changed part (Parts number version up)
Part No-chg.	A part number is changed to other one.
Quantity-chg.	Change Quantity of parts to use
Others	Other changes
Correction	Correction

**Revision history**

Rev.	Date	Remarks

**Symbols in the parts list**

- Parts without a Ref.No. in the illustration indicate they are not supplied.
- Parts with a Ref.No. of 500 and above in the illustration indicate they are not selected for service parts.
- Parts with "\*" are component parts or sub-assemblies of the assembly appearing immediately above them.
- Parts with "\*\*" are component parts or sub-assembly with "\*" appearing immediately above them.

**[CONFIDENTIAL]**

京セラドキュメントソリューションズ株式会社の許可なく、本資料を配布することを禁じます。

**改訂欄記載項目の内容は以下の通りです。**

記載項目	内容
Add	新規部品の追加
Del	部品の削除
Design-chg.	部品の設変（版数アップ）
Part No-chg.	部品番号の変更
Quantity-chg.	部品の個数変更
Others	その他の変更
Correction	誤記訂正

**改訂履歴**

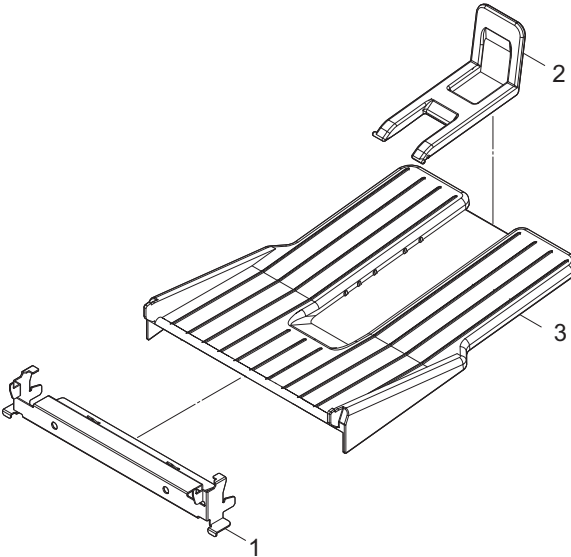
Rev.	改訂日	備考

**記号の見方**

イラスト中で Ref 番号がない部品は供給できません。  
イラスト中で 500 番台の Ref 番号が付いている部品はサービスパーツに選定されていません。  
部品番号欄の・印は、組立部品の単品部品及び準組立部品を表わします。  
部品番号欄の\*\*印は、準組立部品の単品部品を表わします。

—— CONTENTS ——

FIG. 1 PT-320 ..... 2





**KYOCERA Document Solutions America, Inc.****Headquarters**

225 Sand Road,  
Fairfield, New Jersey 07004-0008, USA  
Phone: +1-973-808-8444  
Fax: +1-973-882-6000

**Latin America**

8240 NW 52nd Terrace, Suite 301  
Miami, Florida 33166, USA  
Phone: +1-305-421-6640  
Fax: +1-305-421-6666

**KYOCERA Document Solutions Canada, Ltd.**

6120 Kestrel Rd., Mississauga, ON L5T 1S8,  
Canada  
Phone: +1-905-670-4425  
Fax: +1-905-670-8116

**KYOCERA Document Solutions****Mexico, S.A. de C.V.**

Calle Arquimedes No. 130, 4 Piso, Colonia Polanco  
Chapultepec, Delegacion Miguel Hidalgo,  
Ciudad de Mexico, C.P. 11560  
Phone: +52-555-383-2741  
Fax: +52-555-383-7804

**KYOCERA Document Solutions Brazil, Ltda.**

Alameda África, 545, Pólo Empresarial Consbrás,  
Tamboré, Santana de Parnaíba, State of São Paulo,  
CEP 06543-306, Brazil  
Phone: +55-11-2424-5353  
Fax: +55-11-2424-5304

**KYOCERA Document Solutions Chile SpA**

Jose Ananias 505, Macul. Santiago, Chile  
Phone: +56-2-2670-1900  
Fax: +56-2-2350-7150

**KYOCERA Document Solutions****Australia Pty. Ltd.**

Level 3, 6-10 Talavera Road North Ryde N.S.W, 2113,  
Australia  
Phone: +61-2-9888-9999  
Fax: +61-2-9888-9588

**KYOCERA Document Solutions****New Zealand Ltd.**

Ground Floor, 19 Byron Avenue, Takapuna, Auckland,  
New Zealand  
Phone: +64-9-415-4517  
Fax: +64-9-415-4597

**KYOCERA Document Solutions Asia Limited**

13/F., Mita Centre, 552-566, Castle Peak Road Tsuen  
Wan, New Territories, Hong Kong  
Phone: +852-2496-5678  
Fax: +852-2610-2063

**KYOCERA Document Solutions****(China) Corporation**

8F, No. 288 Nanjing Road West, Huangpu District,  
Shanghai, 200003, China  
Phone: +86-21-5301-1777  
Fax: +86-21-5302-8300

**KYOCERA Document Solutions****(Thailand) Corp., Ltd.**

335 Ratchadapisek Road, Wongsawang, Bangsue,  
Bangkok 10800,  
Thailand  
Phone: +66-2-586-0333  
Fax: +66-2-586-0278

**KYOCERA Document Solutions****Singapore Pte. Ltd.**

12 Tai Seng Street #04-01A,  
Luxasia Building, Singapore 534118  
Phone: +65-6741-8733  
Fax: +65-6748-3788

**KYOCERA Document Solutions****Hong Kong Limited**

16/F., Mita Centre, 552-566, Castle Peak Road Tsuen  
Wan, New Territories, Hong Kong  
Phone: +852-3582-4000  
Fax: +852-3185-1399

**KYOCERA Document Solutions****Taiwan Corporation**

6F., No.37, Sec. 3, Minquan E. Rd.,  
Zhongshan Dist., Taipei 104, Taiwan R.O.C.  
Phone: +886-2-2507-6709  
Fax: +886-2-2507-8432

**KYOCERA Document Solutions Korea Co., Ltd.**

#10F Daewoo Foundation Bldg 18, Toegy-ro, Jung-gu,  
Seoul, Korea  
Phone: +822-6933-4050  
Fax: +822-747-0084

**KYOCERA Document Solutions****India Private Limited**

Second Floor, Centrum Plaza, Golf Course Road,  
Sector-53, Gurgaon, Haryana 122002, India  
Phone: +91-0124-4671000  
Fax: +91-0124-4671001

**KYOCERA Document Solutions Europe B.V.**

Bloemlaan 4, 2132 NP Hoofddorp,  
The Netherlands  
Phone: +31(0)20-654-0000  
Fax: +31(0)20-653-1256

**KYOCERA Document Solutions Nederland B.V.**

Beechavenue 25, 1119 RA Schiphol-Rijk,  
The Netherlands  
Phone: +31-20-5877200  
Fax: +31-20-5877260

**KYOCERA Document Solutions (U.K.) Limited**

Eldon Court, 75-77 London Road,  
Reading, Berkshire RG1 5BS,  
United Kingdom  
Phone: +44-118-931-1500  
Fax: +44-118-931-1108

**KYOCERA Document Solutions Italia S.p.A.**

Via Monfalcone 15, 20132, Milano, Italy,  
Phone: +39-02-921791  
Fax: +39-02-92179-600

**KYOCERA Document Solutions Belgium N.V.**

Sint-Martinusweg 199-201 1930 Zaventem,  
Belgium  
Phone: +32-2-7209270  
Fax: +32-2-7208748

**KYOCERA Document Solutions France S.A.S.**

Espace Technologique de St Aubin  
Route de l'Orme 91195 Gif-sur-Yvette CEDEX,  
France  
Phone: +33-1-69852600  
Fax: +33-1-69853409

**KYOCERA Document Solutions Espana, S.A.**

Edificio Kyocera, Avda. de Manacor No.2,  
28290 Las Matas (Madrid), Spain  
Phone: +34-91-6318392  
Fax: +34-91-6318219

© 2019 KYOCERA Document Solutions Inc.

 is a trademark of KYOCERA Corporation

**KYOCERA Document Solutions Finland Oy**

Atomitie 5C, 00370 Helsinki,  
Finland  
Phone: +358-9-47805200  
Fax: +358-9-47805212

**KYOCERA Document Solutions Europe B.V., Amsterdam (NL) Zürich Branch**

Hohlstrasse 614, 8048 Zürich,  
Switzerland  
Phone: +41-44-9084949  
Fax: +41-44-9084950

**KYOCERA Bilgitas Document Solutions Turkey A.S.**

Altunizade Mah. Prof. Fahrettin Kerim Gökay Cad.  
No:45  
34662 ÜSKÜDAR İSTANBUL, TURKEY  
Phone: +90-216-339-0020  
Fax: +90-216-339-0070

**KYOCERA Document Solutions Deutschland GmbH**

Otto-Hahn-Strasse 12, 40670 Meerbusch,  
Germany  
Phone: +49-2159-9180  
Fax: +49-2159-918100

**KYOCERA Document Solutions Austria GmbH**

Wienerbergstraße 11, Turm A, 18. OG, 1100 Wien,  
Austria  
Phone: +43-1-863380  
Fax: +43-1-86338-400

**KYOCERA Document Solutions Nordic AB**

Borgarfjordsgatan 11, 164 40 Kista, Sweden  
Phone: +46-8-546-550-00  
Fax: +46-8-546-550-10

京セラドキュメントソリューションズ株式会社  
京セラドキュメントソリューションズジャパン株式会社

 は京セラ株式会社の登録商標です。

**KYOCERA Document Solutions Norge Nuf**

Olaf Helsetsv. 6, 0619 Oslo, Norway  
Phone: +47-22-62-73-00  
Fax: +47-22-62-72-00

**KYOCERA Document Solutions Danmark A/S**

Ejby Industrivej 60, DK-2600 Glostrup,  
Denmark  
Phone: +45-70223880  
Fax: +45-45765850

**KYOCERA Document Solutions Portugal Lda.**

Rua do Centro Cultural, 41 (Alvalade) 1700-106 Lisboa,  
Portugal  
Phone: +351-21-843-6780  
Fax: +351-21-849-3312

**KYOCERA Document Solutions South Africa (Pty) Ltd.**

KYOCERA House, Hertford Office Park,  
90 Bekker Road (Cnr. Allandale), Midrand, South Africa  
Phone: +27-11-540-2600  
Fax: +27-11-466-3050

**KYOCERA Document Solutions Russia LLC.**

Building 2, 51/4, Schepkina St., 129110, Moscow,  
Russia  
Phone: +7(495)741-0004  
Fax: +7(495)741-0018

**KYOCERA Document Solutions Middle East**

Dubai Internet City, Bldg. 17,  
Office 157 P.O. Box 500817, Dubai,  
United Arab Emirates  
Phone: +971-04-433-0412

**KYOCERA Document Solutions Czech, s.r.o.**

Harfa Office Park, Českomoravská 2420/15, Praha 9  
Phone: +420-222-562-246

**KYOCERA Document Solutions Inc.**

2-28, 1-chome, Tamatsukuri, Chuo-ku  
Osaka 540-8585, Japan  
Phone: +81-6-6764-3555  
<http://www.kyoceradocumentsolutions.com>