



FS-C5015N FS-C5025N

PARTS LIST

Published in June 2007
2HK70772
Revision 2

WWW.SERVICE-MANUAL.NET

NOTES

1. Indicate parts number and machine model when placing an order.

e.g.	Parts Number	Parts Name	Machine Model	Frequency	Quantity
	302HJ00010	KEY BOARD ASSY (16/17ppm EUR/USA)	FS-C5015N	50Hz / 60Hz	1
	302HK00010	KEY BOARD ASSY (20/22ppm EUR/USA)	FS-C5025N	50Hz / 60Hz	1

2. Service calls and freight will be charged separately.

3. Symbols in the "Parts Number" column.

- Parts with "•" are component parts or sub-assemblies of the assembly appearing immediately above them.

e.g.	Parts Number	Parts Name	Parts Number	Parts Name
	302F300830	COVER TOP ASSY	•302F304020	ROLLER FD
			•302F304030	DISCHARGER FD

- Parts with "••" are component parts or sub-assembly with "•" appearing immediately above them.

e.g.	Parts Number	Parts Name	Parts Number	Parts Name
	•302F300660	BRACKET HV MAIN ASSY	••302F331150	BRACKET HV MAIN
			••302F331180	PIN HV CONTACT

- Parts with "⊙" indicate the spare parts and the parts without "⊙" can not be supplied.

— CONTENTS —

FIG. 1	Exterior Covers	2
FIG. 2	Upper Frame Unit	4
FIG. 3	Drive Units	6
FIG. 4	Controller Box	8
FIG. 5	Paper Feed Unit	10
FIG. 6	Fuser Unit (16/17ppm EUR/USA)	12
FIG. 6	Fuser Unit (20/22ppm EUR/USA)	14
FIG. 7	Drum Unit / LED Unit	16
FIG. 8	Developer Unit	18
FIG. 9	Frame MP Assembly	20
FIG. 10	MP Tray	22
FIG. 11	Primary Transfer Unit	24
FIG. 12	Paper Cassette	26
FIG. 13	Accessories	28
FIG. 14	Packing Assemblies	30
	• INDEX	31

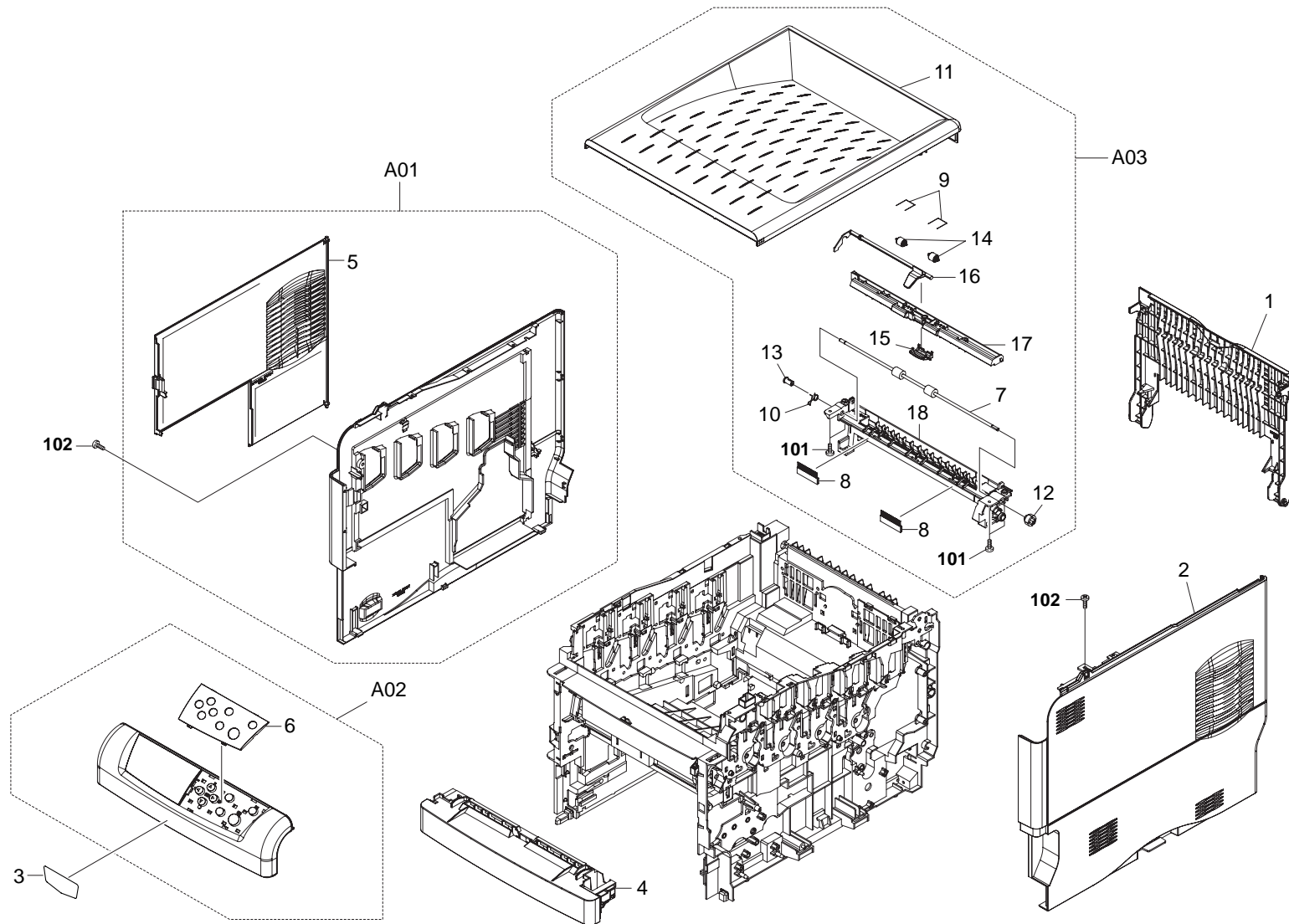


FIG. 1 Exterior Covers

2HJ/2HK-1

SP	Ref. No.	Part.No.	Alternative.	Description	Quantity			
					110	120	230	240
⊙	1	302D904053	2D904053	COVER REAR	1	1	1	1
⊙	2	302F300390	2F300390	COVER RIGHT ASSY	1	1	1	1
	3	302HJ04040	2HJ04040	PLATE EMBLEM	1	1	1	1
⊙	4	5MVB855SH001	2FP04150	COVER FRONT	1	1	1	1
⊙	A01	302F300371	2F300371	COVER LEFT ASSY	1	1	1	1
⊙	5	*302D904042	2D904042	COVER SIDE	1	1	1	1
⊙	A02	302HJ00010	2HJ00010	KEY BOARD ASSY (16/17ppm EUR/USA)	1	1	1	1
⊙	A02	302HK00010	2HK00010	KEY BOARD ASSY (20/22ppm EUR/USA)	1	1	1	1
⊙	6	*302HJ05020	2HJ05020	COVER PANEL (16/17ppm EUR/USA)	1	1	1	1
⊙	6	*302HK05010	2HK05010	COVER PANEL (20/22ppm EUR/USA)	1	1	1	1
⊙	A03	302F300830	2F300830	COVER TOP ASSY	1	1	1	1
⊙	7	*302F304020	2F304020	ROLLER FD	1	1	1	1
⊙	8	*302F304030	2F304030	DISCHARGER FD	2	2	2	2
⊙	9	*5MMW251LD046	2BS04050	SPRING PULLEY	2	2	2	2
⊙	10	*5MMW463LD001	2D902570	SPRING FD LOW	1	1	1	1
⊙	11	*5MVB986SH026	2D904010	COVER TOP	1	1	1	1
⊙	12	*5MVG127DN076	2BS02220	GEAR ROLL FD Z18	1	1	1	1
⊙	13	*5MVM266DN006	2BS02290	BUSH FD	1	1	1	1
⊙	14	*5MVM273DB006	2BS04170	ROLLER PINCH	2	2	2	2
⊙	15	*5MVX332DB015	2D904170	GUIDE STOCK	1	1	1	1
⊙	16	*5MVX732CB003	2BS04310	ACTUATOR FD	1	1	1	1
	17	*5MVX852CH002	2BS04340	FRAME FD	1	1	1	1
	18	*5MVX866XB003	2D904060	FRAME FD LOW	1	1	1	1

SP	Ref. No.	Part.No.	Alternative.	Description	Quantity			
					110	120	230	240
	101	5MBTPB3010PW++R	B1B63100	BIND T.T SCREW(+)/ M3 X 10 CRFREE P-T				
	102	5MBTPB4010PW++R	B1A64100	BIND T.T SCREW(+)/ M4 X 10 CRFREE P-T				

- Parts with "*" are component parts or sub-assemblies of the assembly appearing immediately above them.
- Parts with "⊙" indicate the spare parts.

- Parts with ".•" are component parts or sub-assembly with ".•" appearing immediately above them.

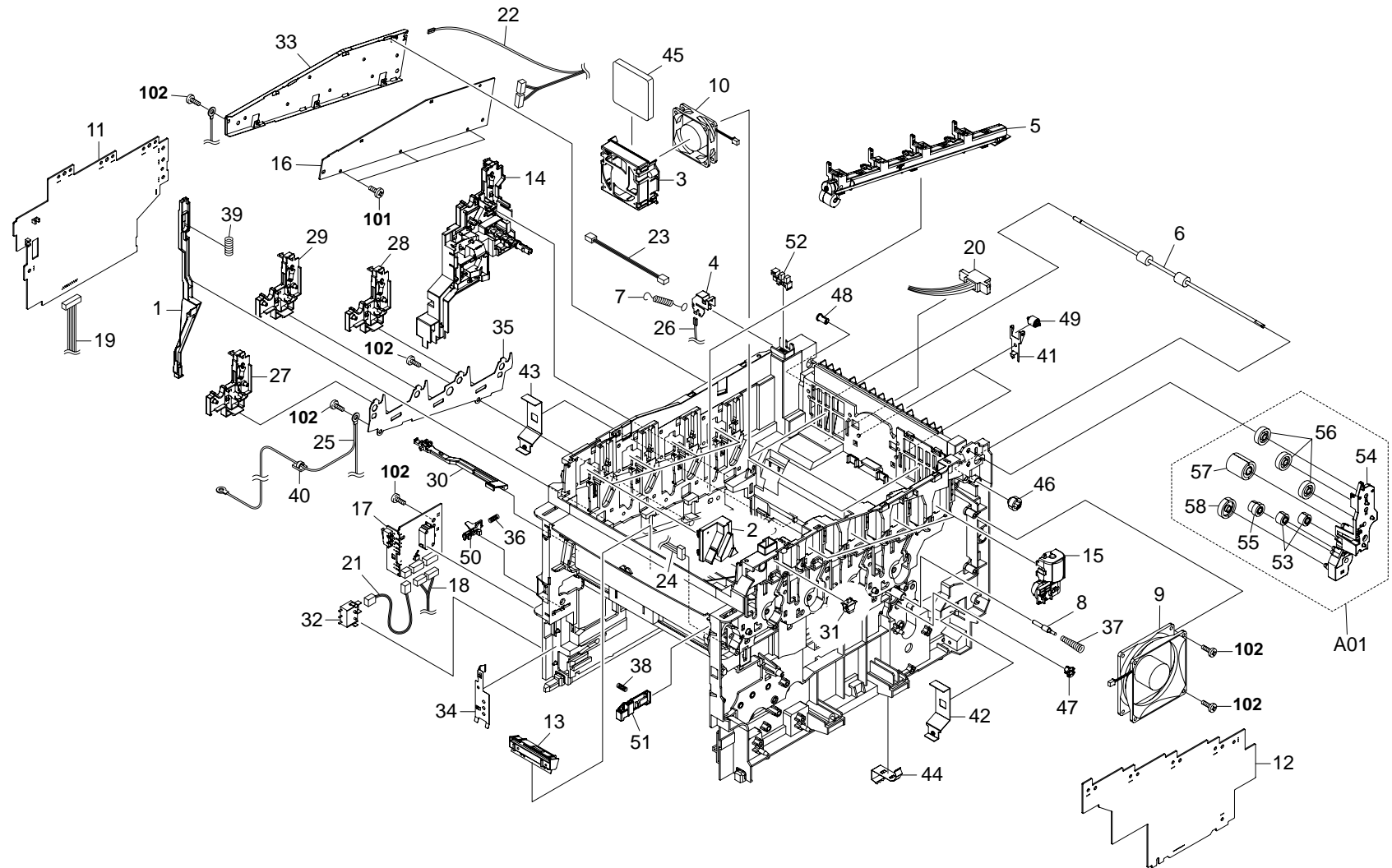


FIG. 2 Upper Frame Unit

2HJ/2HK-1

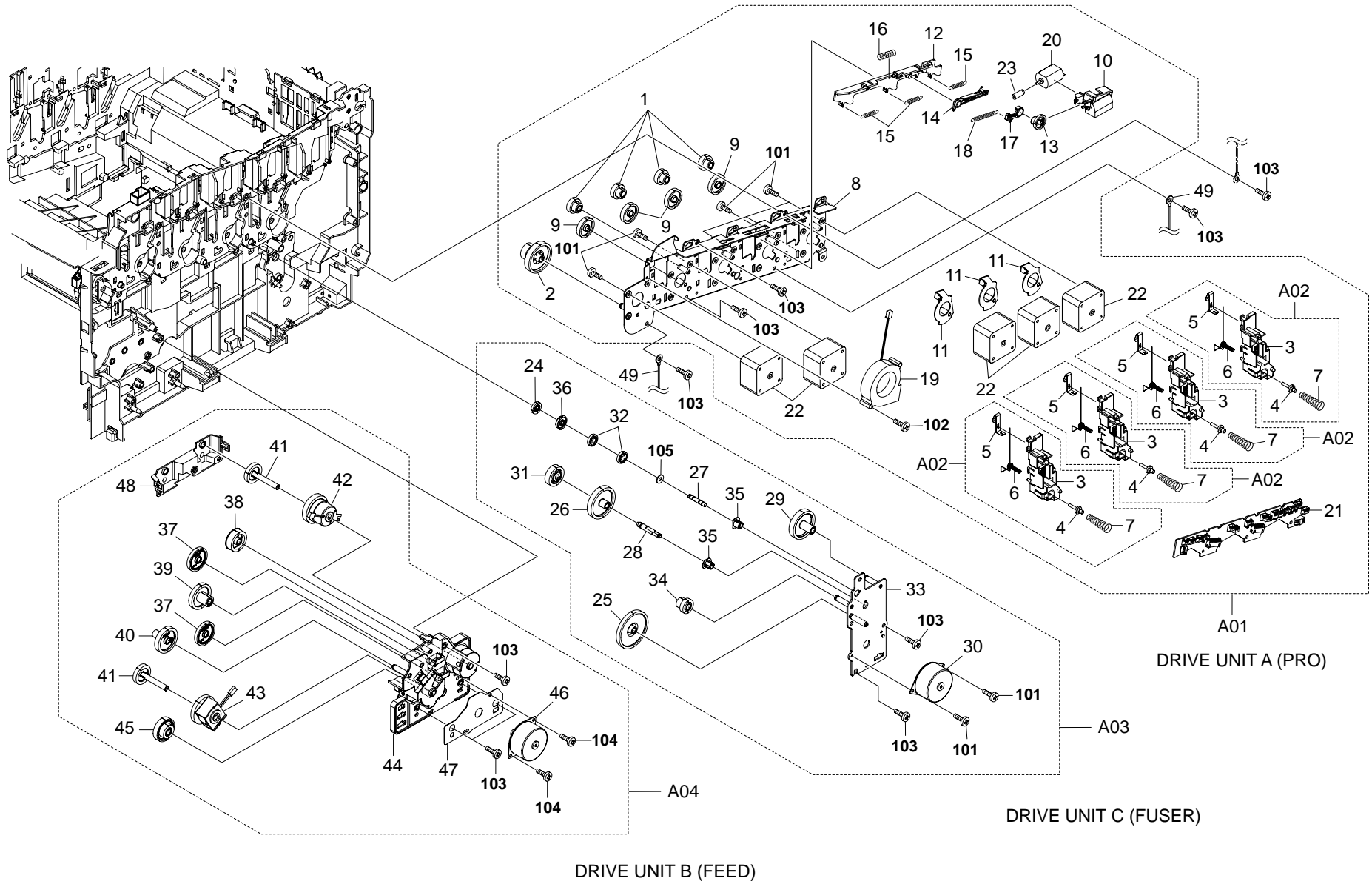
SP	Ref. No.	Part.No.	Alternative.	Description	Quantity			
					110	120	230	240
	1	302D902311	2D902311	ROD INTERLOCK	1	1	1	1
	2	302D902372	2D902372	COVER HARNESS	4	4	4	4
	3	302D902542	2D902542	BRACKET FAN	2	2	2	2
	4	302D902551	2D902551	PLATE EARTH FD	1	1	1	1
⊙	5	302F300430	2F300430	WASTE TONER ASSY	1	1	1	1
⊙	6	302F302010	2F302010	ROLLER FD LOW	1	1	1	1
	7	302F302020	2F302020	SPRING EARTH FD	1	1	1	1
	8	302F302030	2F302030	PIN CONTACT BIAS	1	1	1	1
⊙	9	302F344011	2F344011	FAN MOTOR	1	1	1	1
⊙	10	302F344031	2F344031	FAN MOTOR	2	2	2	2
⊙	11	302F345011	2F345011	TRANS ASSY HI VOLTAGE MAIN	1	1	1	1
⊙	12	302F345021	2F345021	TRANS ASSY HI VOLTAGE DLP	1	1	1	1
⊙	13	302HJ00020	2HJ00020	SENSOR ID ASSY	1	1	1	1
⊙	14	302HJ00040	2HJ00040	BRACKET HV ASSY /C5015 (16/17ppm EUR/USA)	1	1	1	1
⊙	14	302HK00100	2HK00100	BRACKET HV ASSY /C5025(E) (20/22ppm EUR/USA)	1	1	1	1
⊙	15	302HJ00050	2HJ00050	TONER MOTOR ASSY	4	4	4	4
⊙	16	302HJ01020	2HJ01010	P.W.BOARD ASSY LEDRLY (16/17ppm EUR/USA)	1	1	1	1
⊙	16	302HK01020	2HK01020	P.W.BOARD ASSY LEDRLY (20/22ppm EUR/USA)	1	1	1	1
⊙	17	302HJ01140	2HJ01140	P.W.BOARD ASSY SENSOR	1	1	1	1
	18	302HJ46040	2HJ46040	CONN. CORD ASSY S03197	1	1	1	1
	19	302HJ46060	2HJ46060	CONN. CORD ASSY S03199	1	1	1	1
	20	302HJ46080	2HJ46080	CONN. CORD ASSY S03203	1	1	1	1
	21	302HJ46110	2HJ46110	CONN. CORD ASSY S03207	1	1	1	1
	22	302HJ46170	2HJ46170	CONN. CORD ASSY S03213	1	1	1	1
	23	302HJ46180	2HJ46180	CONN. CORD ASSY S03215	1	1	1	1
	24	302HJ46210	2HJ46210	CONN. CORD ASSY S03219	1	1	1	1
	25	302HJ46230	2HJ46230	CONN. CORD ASSY S03221	1	1	1	1
	26	302HK46040	2HK46040	CONN. CORD ASSY S03232	1	1	1	1
⊙	27	5AAYA80E++71	2D969810	BRACKET HV DLP K ASSY	1	1	1	1
⊙	28	5AAYA80E++72	2D969820	BRACKET HV DLP C ASSY	1	1	1	1
⊙	29	5AAYA80E++73	2D969830	BRACKET HV DLP Y ASSY	1	1	1	1
⊙	30	5AAYA80E++75	2D969860	CLEANER ID ASSY	1	1	1	1
⊙	31	5ESP01000101+01	SP000310	PUSH SWITCH 01 SN	1	1	1	1
⊙	32	5FSP03090001+01	SP0A0360	PUSH SWITCH 03 SN	1	1	1	1
	33	5MMB861SD004	2D902200	PLATE SHIELD PWB	1	1	1	1
	34	5MMS632LD001	2D902320	PLATE EARTH HV A	1	1	1	1
	35	5MMS866SD001	2D908510	PLATE FRAME DRUM	1	1	1	1
	36	5MMW222LD002	2BR02280	SPRING LEVER EF	1	1	1	1
	37	5MMW222LD003	2D902580	SPRING CONTACT CLN	1	1	1	1
	38	5MMW261LD051	2BR02340	SP LOCK COVER M/P	1	1	1	1
	39	5MMW451LD001	2B700570	SPRING INTER LOCK	1	1	1	1
	40	5MMX221SW002	3FW02530	CORD KEEP	1	1	1	1
	41	5MMX431LD017	2D902410	BRACKET ROLLER PINCH	2	2	2	2
	42	5MMX632SD006	2D902380	PLATE EARTH FUSER	1	1	1	1
	43	5MMX632SD006	2D902380	PLATE EARTH FUSER	1	1	1	1
	44	5MMZ242LD002	2D902330	PLATE EARTH HV B	1	1	1	1

SP	Ref. No.	Part.No.	Alternative.	Description	Quantity			
					110	120	230	240
⊙	45	5MVB661XF001	2D902530	OZONE FILTER	2	2	2	2
⊙	46	5MVG127DN076	2BS02220	GEAR ROLL FD Z18	1	1	1	1
⊙	47	5MVM176DN035	2D922250	BUSH FRAME	1	1	1	1
⊙	48	5MVM266DN006	2BS02290	BUSH FD	1	1	1	1
⊙	49	5MVM273DB006	2BS04170	ROLLER PINCH	2	2	2	2
⊙	50	5MVX322DB023	2BS02350	LEVER EF	1	1	1	1
	51	5MVX522DB006	2BS02390	LOCK COVER M/P	1	1	1	1
⊙	52	7NXEESX1235AH01	2D902860	PT.SENSOR EE-SX1235A	1	1	1	1
A01		302F300890	2F300890	BRACKET FD GEAR ASSY	1	1	1	1
⊙	53	*2B720380	5MVG127DW004	GEAR IDLE Z16	2	2	2	2
⊙	54	*302D902391	2D902391	BRACKET FD GEAR	1	1	1	1
⊙	55	*5MVG127DN122	2D902400	GEAR FD Z15-Z18	1	1	1	1
⊙	56	*5MVG137DN014	2BS02240	GEAR IDLE Z25	3	3	3	3
⊙	57	*5MVG138DN047	2BS02260	GEAR FD Z28	1	1	1	1
⊙	58	*5MVG138DN048	2BD02270	GEAR FD Z29	1	1	1	1
	101	5MBTPB3006TW++R	B1A53060	BIND T.T SCREW(+)/ M3 X 6 CRFREE S-T				
	102	5MBTPB4010PW++R	B1A64100	BIND T.T SCREW(+)/ M4 X 10 CRFREE P-T				

• Parts with "*" are component parts or sub-assemblies of the assembly appearing immediately above them.

• Parts with "⊙" indicate the spare parts.

• Parts with "••" are component parts or sub-assembly with "•" appearing immediately above them.



DRIVE UNIT B (FEED)

DRIVE UNIT C (FUSER)

FIG. 3 Drive Units

2HJ/2HK-1

SP	Ref. No.	Part.No.	Alternative.	Description	Quantity			
					110	120	230	240
⊙	A01	302HJ93070	2HJ93070	DR-511A DRIVE PRO UNIT (16/17ppm EUR/USA)	1	1	1	1
⊙	A01	302HK93020	2HK93020	DR-521A DRIVE PRO UNIT (20/22ppm EUR/USA)	1	1	1	1
⊙	1	*302D922161	2D922161	GEAR Z21H-Z20H	4	4	4	4
⊙	2	*302D922181	2D922181	GEAR Z72H-Z22H	1	1	1	1
⊙	A02	*302F300660	2F300660	BRACKET HV MAIN ASSY	4	4	4	4
⊙	3	**302F331150	2F331150	BRACKET HV MAIN	4	4	4	4
⊙	4	**302F331180	2F331180	PIN HV CONTACT	4	4	4	4
⊙	5	**302F331190	2F331190	CONTACT MAIN B	4	4	4	4
⊙	6	**302F331200	2F331200	SPRING HV MAIN	4	4	4	4
⊙	7	**5MMW311LD003	2B702130	SPRING HV CONTACT	4	4	4	4
⊙	8	*302F331010	2F331010	PLATE DRIVE MAIN	1	1	1	1
⊙	9	*302F331022	2F331022	GEAR Z40H	4	4	4	4
⊙	10	*302F331030	2F331030	BRACKET MOTOR	1	1	1	1
⊙	11	*302F331041	2F331041	PLATE IDLE ARM	3	3	3	3
⊙	12	*302F331050	2F331050	LEVER PLATE IDLE	1	1	1	1
⊙	13	*302F331060	2F331060	CAM GEAR Z34H	1	1	1	1
⊙	14	*302F331081	2F331081	LEVER CAM	1	1	1	1
⊙	15	*302F331090	2F331090	SPRING IDLE ARM	3	3	3	3
⊙	16	*302F331100	2F331100	SPRING LEVER	1	1	1	1
⊙	17	*302F331160	2F331160	HOOK CRANK	1	1	1	1
⊙	18	*302F331170	2F331170	SPRING HOOK CRANK	1	1	1	1
⊙	19	*302F344021	2F344021	FAN MOTOR	1	1	1	1
⊙	20	*302F344040	2F344040	DC MOTOR	1	1	1	1
⊙	21	*302HJ01100	2HJ01100	P.W.BOARD ASSY ENGRLY	1	1	1	1
⊙	22	*302HJ31010	2HJ31010	STEPPING MOTOR PRO (16/17ppm EUR/USA)	5	5	5	5
⊙	22	*302HK31010	2HK31010	STEPPING MOTOR PRO (20/22ppm EUR/USA)	5	5	5	5
⊙	23	*5MVG115DB002	2BM14540	GEAR WORM	1	1	1	1
⊙	A03	302F393121	2F393121	DR-510C DRIVE FUSER UNIT (16/17ppm EUR/USA)	1	1	1	1
⊙	A03	302F493051	2F493051	DR-520C DRIVE FUSER UNIT (20/22ppm EUR/USA)	1	1	1	1
⊙	24	*302D915211	2D915211	GEAR DRIVE FUSER Z22	1	1	1	1
⊙	25	*302D922101	2D922101	GEAR Z93S-Z24S	1	1	1	1
⊙	26	*302D922112	2D922112	GEAR Z48S	1	1	1	1
⊙	27	*302F331210	2F331210	SHAFT CLUTCH B	1	1	1	1
⊙	28	*302F331220	2F331220	SHAFT CLUTCH	1	1	1	1
⊙	29	*302F331250	2F331250	GEAR Z43S (16/17ppm EUR/USA)	1	1	1	1
⊙	29	*5MVG154BN001	2D922130	GEAR Z43S (20/22ppm EUR/USA)	1	1	1	1
⊙	30	*302HJ31020	2HJ31020	STEPPING MOTOR FUSER (16/17ppm EUR/USA)	1	1	1	1
⊙	30	*302F431011	2F431011	STEPPING MOTOR FUSER (20/22ppm EUR/USA)	1	1	1	1
⊙	31	*5AAVGEAR+044	2D969180	GEAR Z29S ASSY	1	1	1	1
⊙	32	*5AAVGEAR+045	2D969870	GEAR Z22S ASSY	2	2	2	2
⊙	33	*5MMX763SD003	2D922090	PLATE DRIVE FUSER	1	1	1	1
⊙	34	*5MVG122DN009	2D922140	GEAR Z14-Z20	1	1	1	1

SP	Ref. No.	Part.No.	Alternative.	Description	Quantity			
					110	120	230	240
⊙	35	*5MVM176DN034	2D922240	BUSH SHAFT CLUTCH	2	2	2	2
⊙	36	*5MVM331DN002	2D915200	BUSH DRIVE FUSER	1	1	1	1
⊙	A04	302F393111	2F393111	DR-510B DRIVE FEED UNIT (16/17ppm EUR/USA)	1	1	1	1
⊙	A04	302F493041	2F493041	DR-520B DRIVE FEED UNIT (20/22ppm EUR/USA)	1	1	1	1
⊙	37	*302D922041	2D922041	GEAR Z35S	2	2	2	2
⊙	38	*302D922051	2D922051	GEAR Z30S	1	1	1	1
⊙	39	*302D922061	2D922061	GEAR Z38S-Z14S	1	1	1	1
⊙	40	*302D922071	2D922071	GEAR Z38S	1	1	1	1
⊙	41	*302D922081	2D922081	GEAR CL Z21S	2	2	2	2
⊙	42	*302F331120	2F331120	CLUTCH REGIST	1	1	1	1
⊙	43	*302F331130	2F331130	CLUTCH FEED	1	1	1	1
⊙	44	*302F331140	2F331140	BRACKET DRIVE FEED	1	1	1	1
⊙	45	*302F331260	2F331260	GEAR Z56H-Z20S	1	1	1	1
⊙	46	*302F344051	2F344051	STEPPING MOTOR FEED (16/17ppm EUR/USA)	1	1	1	1
⊙	46	*302F431021	2F431021	STEPPING MOTOR FEED (20/22ppm EUR/USA)	1	1	1	1
⊙	47	*5MMS656AX001	2D922260	SHEET MOTOR FEED (20/22ppm EUR/USA)	1	1	1	1
⊙	48	*5MVB732XB002	2D922020	COVER DRIVE FEED	1	1	1	1
⊙	49	302HK46050	2HK46050	CONN. CORD ASSY S03233	2	2	2	2
⊙	101	B1A53050	B1A53050	BIND T.T SCREW(+)/ M3 X 5 CRFREE S-T				
⊙	102	5MBTPB3020TW++R	B1A53200	BIND T.T SCREW(+)/ M3 X 20 CRFREE S-T				
⊙	103	5MBTPB4010PW++R	B1A64100	BIND T.T SCREW(+)/ M4 X 10 CRFREE P-T				
⊙	104	5MBTPB3008PW++R	B1A63080	BIND T.T SCREW(+)/ M3 X 8 CRFREE P-T				
⊙	105	5MBWN92F02NN	C2890150	POLY WASHER / M9.2X 15X0.2T				

• Parts with "*" are component parts or sub-assemblies of the assembly appearing immediately above them.

• Parts with "⊙" indicate the spare parts.

• Parts with "••" are component parts or sub-assembly with "•" appearing immediately above them.

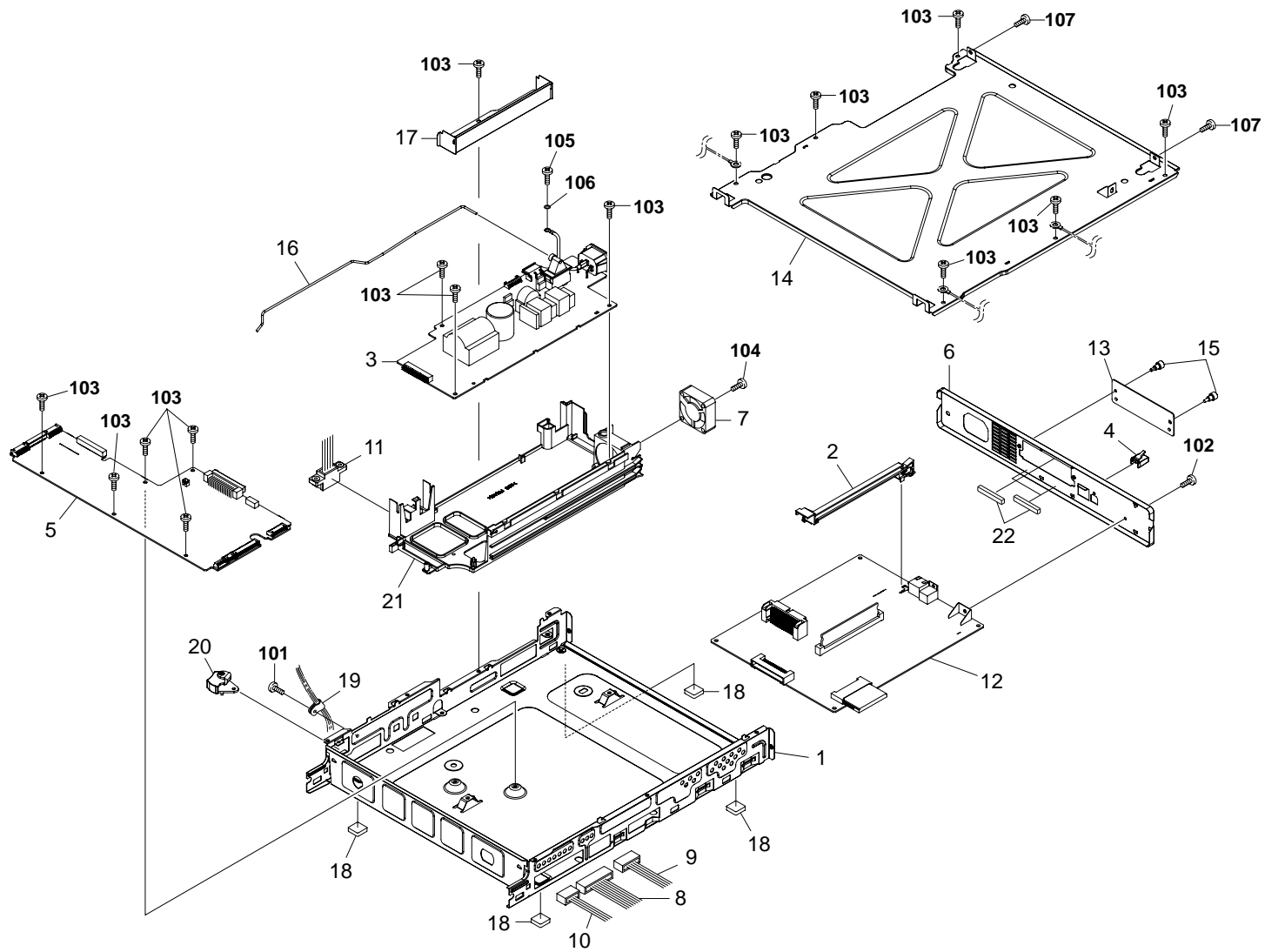


FIG. 4 Controller Box

2HJ/2HK-2

SP	Ref. No.	Part.No.	Alternative.	Description	Quantity			
					110	120	230	240
⊙	1	302D903011	2D903011	BOX CONTROLLER	1	1	1	1
	2	302D903071	2D903071	RAIL OPTION	1	1	1	1
	3	302D945020	2D945020	SWITCHING REGULATOR /MPS3227L (16/17ppm EUR/USA)	1	1		
⊙	3	302HJ45010	2HJ45010	SWITCHING REGULATOR 230V ROHS (16ppm EUR)			1	1
⊙	3	302GV45010	2GV45010	SWITCHING REGULATOR /J (20/22ppm EUR/USA)	1	1		
⊙	3	302HK45010	2HK45010	SWITCHING REGULATOR 230V ROHS (20ppm EUR)			1	1
⊙	4	302F939090	2F939090	CAP NETWORK	1	1	1	1
	5	302HJ01130	2HJ01130	P.W.B.ASSY ENGINE WITH SOFTWARE(SP) (16/17ppm EUR/USA)	1	1	1	1
⊙	5	302HK01090	2HK01090	P.W.B.ASSY ENGINE WITH SOFTWARE(SP) (20/22ppm EUR/USA)	1	1	1	1
⊙	6	302HJ39010	2HJ39010	PANEL REAR	1	1	1	1
	7	302HJ44020	2HJ44020	FAN MOTOR	1	1	1	1
⊙	8	302HJ46010	2HJ46010	CONN. CORD ASSY S03194	1	1	1	1
	9	302HJ46020	2HJ46020	CONN. CORD ASSY S03195	1	1	1	1
⊙	10	302HJ46050	2HJ46050	CONN. CORD ASSY S03198	1	1	1	1
	11	302HJ46070	2HJ46070	CONN. CORD ASSY S03202	1	1	1	1
⊙	12	302HJ80100	2HJ80100	P.W.B MAIN KIT (16/17ppm EUR/USA)	1	1	1	1
⊙	12	302HK80060	2HK80060	P.W.B.MAIN KIT (20/22ppm EUR/USA)	1	1	1	1
⊙	13	303BH26021	3BH26021	PLATE OPTION	1	1	1	1
	14	5MMS884SD001	2D903020	LID CONTROLLER	1	1	1	1
⊙	15	5MMT263SN012++R	2D903100	SCREW OP	2	2	2	2
⊙	16	5MMW803SD001	2D903060	ROD SW POWER	1	1	1	1
	17	5MMX733SD001	2D903040	BRACKET BOX	1	1	1	1
⊙	18	5MVX221RB014	2BS03110	FOOT	4	4	4	4
	19	5MVX321NP001++R	2D902760	SHIELD CLAMP	1	1	1	1
⊙	20	5MVX433SH002	2BS03120	LEVER SW	1	1	1	1
	21	5MVX876SB009	2D903050	CASE PWB POWER	1	1	1	1
⊙	22	7ZGSTGN1R033H01	ZG047920	SHIELD GASKET	2	2	2	2

SP	Ref. No.	Part.No.	Alternative.	Description	Quantity			
					110	120	230	240
⊙	101	B4A03120		TP-A SCREW M3X12(TRIVALENT CHROMAT				
	102	5MBSP3006NW++R	B0B03060	PAN HEAD SCREW(+)/ M3 X 6 CRFREE				
	103	5MBTPB3006TW++R	B1A53060	BIND T.T SCREW(+)/ M3 X 6 CRFREE S-T				
	104	5MBTPB3023WW++R	B1B73230	BIND T.T SCREW(+)/ M3 X 23 CRFREE P-T				
	105	5MBTPB4006TW++R	B1A54060	BIND T.T SCREW(+)/ M4 X 6 CRFREE S-T				
	106	5MBWG40854LD	CP003020	OT.LOCK WASHER / M4X8.5X0.4T SUS-DP (110V/120V only)				
	107	5MBTPB4010PW++R	B1A64100	BIND T.T SCREW(+)/ M4 X 10 CRFREE P-T				

- Parts with "•" are component parts or sub-assemblies of the assembly appearing immediately above them.
- Parts with "⊙" indicate the spare parts.

- Parts with "••" are component parts or sub-assembly with "•" appearing immediately above them.

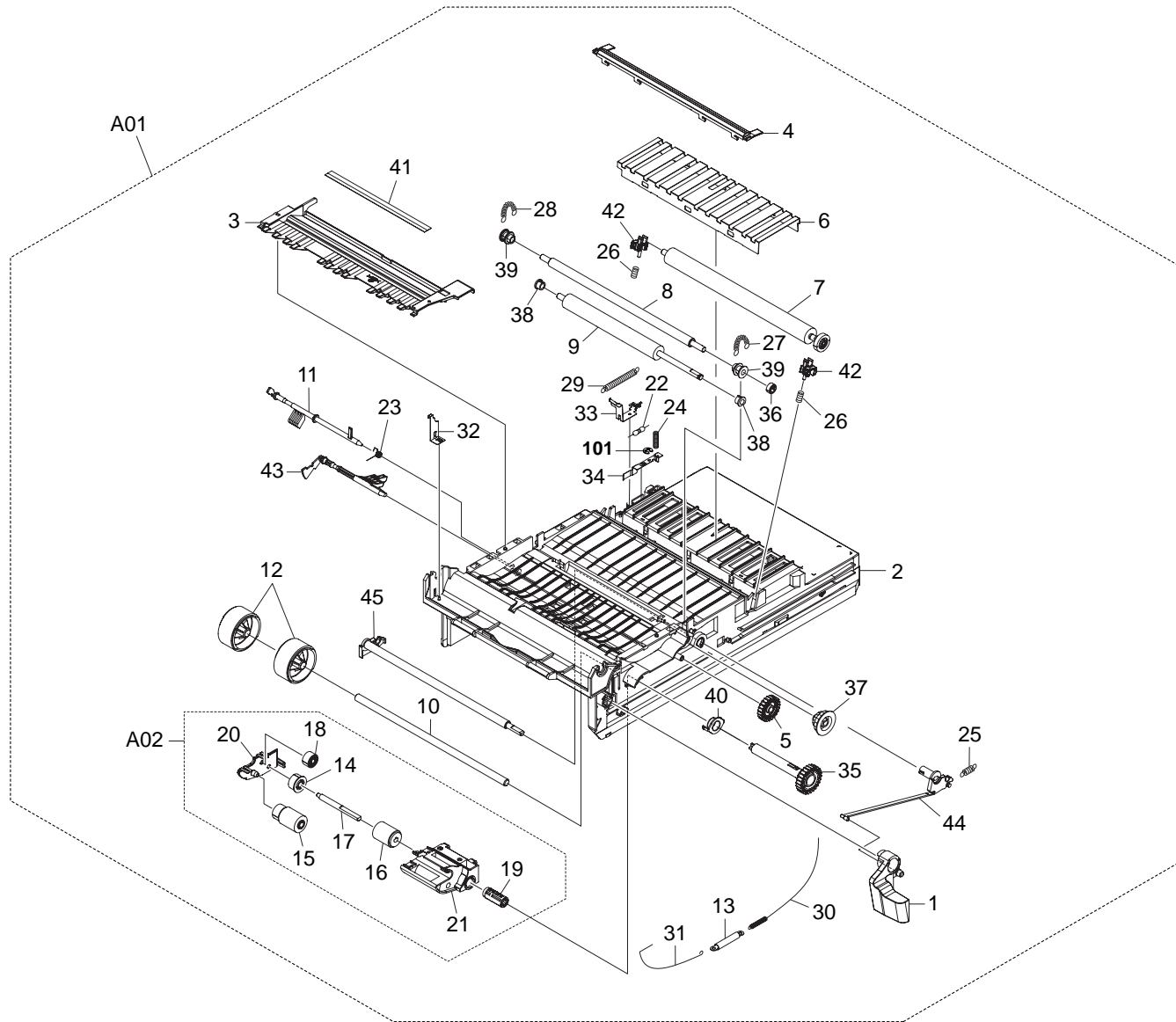


FIG. 5 Paper Feed Unit

2HJ/2HK

SP	Ref. No.	Part.No.	Alternative.	Description	Quantity			
					110	120	230	240
⊙	A01	302F393061	2F393061	FEED TRANS UNIT	1	1	1	1
	1	*2BS16431	2BS16431	LEVER LOCK	1	1	1	1
	2	*302D916051	2D916051	BASE FEED	1	1	1	1
	3	*302D916071	2D916071	GUIDE PAPER	1	1	1	1
⊙	4	*302D916081	2D916081	PAPER CHUTE	1	1	1	1
⊙	5	*302D916221	2D916221	GEAR IDLE Z23S	1	1	1	1
	6	*302F300670	2F300670	DISCHARGER ASSY	1	1	1	1
⊙	7	*302F300850	2F300850	ROLLER TRANSFER ASSY	1	1	1	1
⊙	8	*302F324000	2F324000	ROLLER REGIST UP	1	1	1	1
⊙	9	*302F324020	2F324020	ROLLER REGIST LOW	1	1	1	1
	10	*302F324030	2F324030	SHAFT ROLL GUIDE	1	1	1	1
⊙	11	*302F324040	2F324040	SENSOR DOC	1	1	1	1
⊙	12	*302FP06100	2FP06100	ROLLER GUIDE ASSY	2	2	2	2
	13	*302HJ46300	2HJ46300	CONN. CORD ASSY S03236	1	1	1	1
⊙	A02	*5AAYA37E++35	2BR68470	HOLDER FEED ASSY	1	1	1	1
⊙	14	**5AAVGEAR+037	2BR70440	GEAR PICKUP	1	1	1	1
⊙	15	**5AAVROLL+047	2CL16090	ROLLER FEED ASSY	1	1	1	1
⊙	16	**5AAVROLL+048	2CL16100	ROLLER PICKUP ASSY	1	1	1	1
	17	**5MMT664SN002	2BR16370	SHAFT PICKUP	1	1	1	1
	18	**5MVG137DN036	2BS16250	GEAR FEED IDLE Z29S	1	1	1	1
⊙	19	**5MVX376DN001	2BS16390	HOLDER RELEASE	1	1	1	1
	20	**5MVX642DH001	2BS16400	COVER BKT FEED	1	1	1	1
	21	**5MVX664SH004	2BS16420	BRACKET FEED	1	1	1	1
	22	*5FRHA3A10702+01	RHOA0040	M.GLAZE R. 100M 1W	1	1	1	1
	23	*5MMW161SD014	2D916260	SPRING ACTUATOR REG	1	1	1	1
	24	*5MMW241SX005	2B716150	SPRING TRANS R	1	1	1	1
	25	*5MMW251SD002	2BR16250	SPRING LOCK R	1	1	1	1
	26	*5MMW251SX004	2D916060	SPRING TRANS	2	2	2	2
	27	*5MMW341LD008	2BR16240	SPRING REGIST R	1	1	1	1
	28	*5MMW341LD011	2D916250	SPRING REGIST L	1	1	1	1
	29	*5MMW641SD001	2D916130	SPRING EARTH B	1	1	1	1
	30	*5MMW641SD002	2D916270	SPRING EARTH C	1	1	1	1
	31	*5MMW641SD003	2D916280	WIRE EARTH M/P	1	1	1	1
	32	*5MMX422LD012	2D916140	PLATE EARTH MP	1	1	1	1
	33	*5MMX543LD006	2D916110	PLATE EARTH TC	1	1	1	1
	34	*5MMX543LD007	2D916210	PLATE EARTH FEED	1	1	1	1
⊙	35	*5MVG038DN002	2D916230	GEAR JOINT Z26S	1	1	1	1
⊙	36	*5MVG126DN015	2BS16240	GEAR REGIST Z19S	1	1	1	1
⊙	37	*5MVG148DN060	2BS16270	GEAR REG Z22S-Z32S	1	1	1	1
⊙	38	*5MVM176DN019	2B716270	BUSH POM A	2	2	2	2
⊙	39	*5MVM221DB002	2BS16290	BUSH REGIST	2	2	2	2
⊙	40	*5MVM222XN001	2BS16300	BUSH FEED	1	1	1	1
⊙	41	*5MVS721KF005	2D916150	SHEET REGIST	1	1	1	1
⊙	42	*5MVX322DB019	2BS16380	BUSH TRANSFER	2	2	2	2
⊙	43	*5MVX663SB013	2BS16410	ACTUATOR PAPER	1	1	1	1
	44	*5MVX733DN002	2D916090	HOOK RELEASE	1	1	1	1
	45	*5MVX843CB004	2BS16470	SHAFT RELEASE	1	1	1	1

SP	Ref. No.	Part.No.	Alternative.	Description	Quantity			
					110	120	230	240
	101	5MBCS2425XSP	D4000240	CS STOP RING /X2.4 X .25T S-BLK				

- Parts with "*" are component parts or sub-assemblies of the assembly appearing immediately above them.
- Parts with "⊙" indicate the spare parts.

- Parts with "•" are component parts or sub-assembly with "•" appearing immediately above them.

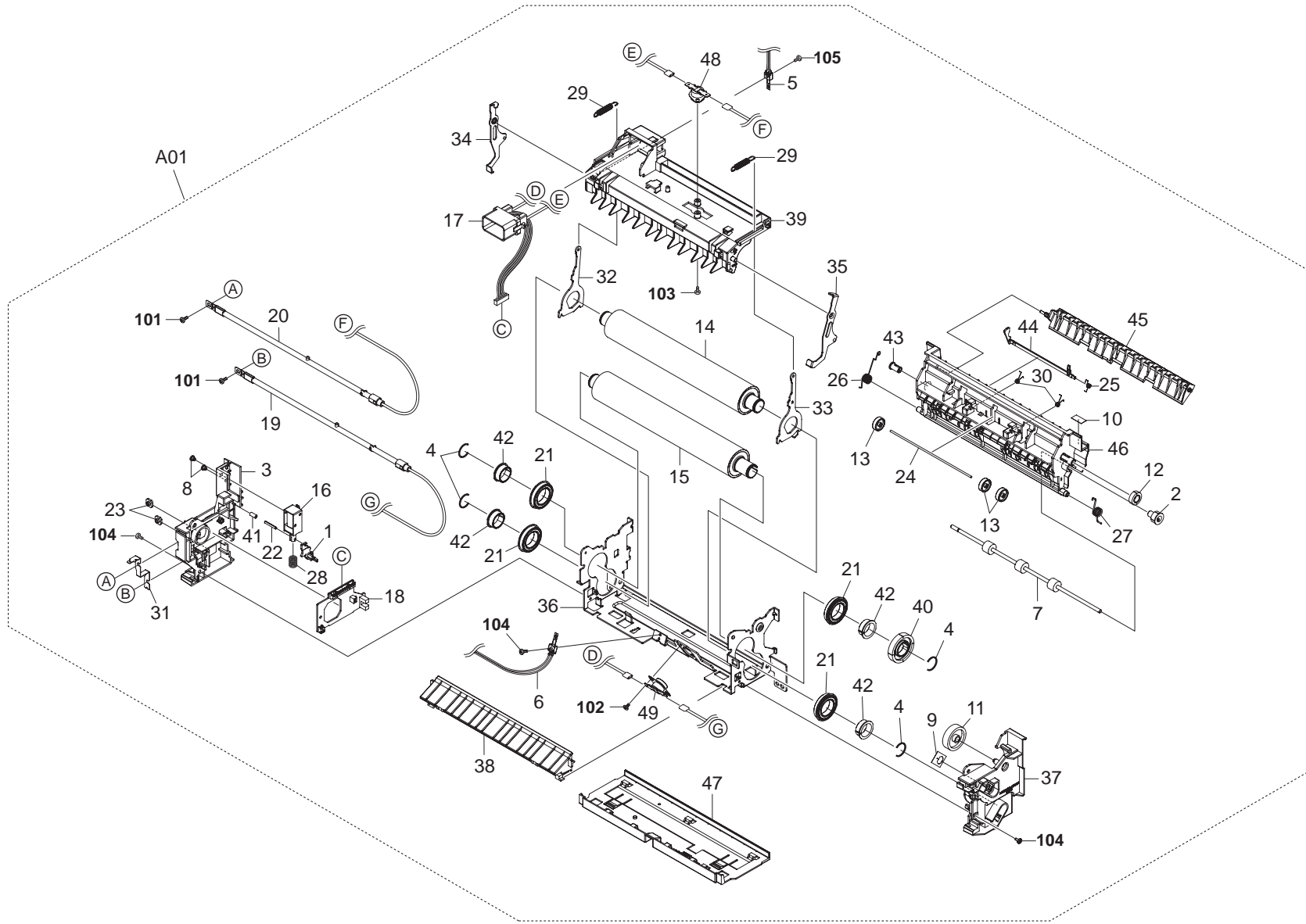


FIG. 6 Fuser Unit (16/17ppm EUR/USA)

2HJ/2HK-2

SP	Ref. No.	Part.No.	Alternative.	Description	Quantity			
					110	120	230	240
⊙	A01	302F393081	2F393081	FK-510(U) FUSER UNIT (16/17ppm EUR/USA)	1	1		
⊙	A01	302F393071	2F393071	FK-510(E) FUSER UNIT (16ppm EUR)			1	1
	1	*302D920012	2D920012	ACTUATOR SOL	1	1	1	1
⊙	2	*302D920041	2D920041	GEAR EXIT Z15S	1	1	1	1
	3	*302D925010	2D925010	COVER FUSER L	1	1	1	1
	4	*302D925020	2D925020	RING STOP	4	4	4	4
⊙	5	*302D927091	2D927091	THERMISTOR ASSY	1	1	1	1
⊙	6	*302D927091	2D927091	THERMISTOR ASSY	1	1	1	1
⊙	7	*302F325000	2F325000	ROLLER EXIT	1	1	1	1
	8	*302F325010	2F325010	STUD SCREW M3	2	2	2	2
	9	*302F325020	2F325020	SEAL HEATER R	1	1	1	1
	10	*302F325030	2F325030	LABEL EXIT	1	1	1	1
⊙	11	*302F325040	2F325040	GEAR JOINT Z36	1	1	1	1
⊙	12	*302F325060	2F325060	GEAR IDLE Z18	1	1	1	1
⊙	13	*302F325070	2F325070	PULLEY EXIT	3	3	3	3
⊙	14	*302HJ25030	2HJ25030	ROLLER FIX UP	1	1	1	1
⊙	15	*302HJ25040	2HJ25040	ROLLER FIX LOW	1	1	1	1
⊙	16	*302HJ44010	2HJ44010	SOLENOID	1	1	1	1
	17	*302HJ46100	2HJ46100	CONN. CORD ASSY S03205	1	1		
	18	*302HJ46090	2HJ46090	CONN. CORD ASSY S03204			1	1
⊙	17	*5AAPRIFC1030AHP	2D901460	P.W.B.ASSY KP-970 FUSER	1	1	1	1
⊙	19	*5FZPB1212920101	WP0A0540	LAMP HEATER LOW 120V	1	1		
⊙	19	*5HZPB2411520201	2D920450	LAMP HEATER LOW 240V			1	1
⊙	20	*5HZPB1214220901	2D920440	LAMP HEATER UP 120V	1	1		
⊙	20	*5HZPB2412120801	2D920400	LAMP HEATER UP 240V			1	1
⊙	21	*5MBE6804ZZNR	2D920350	FUSER BEARING	4	4	4	4
	22	*5MBP2518WXSP	E0025180	SPRING PIN /M2.5 X 18 S-BLK	1	1	1	1
	23	*5MMS111SL002	2BY20050	NUT FUSER A	2	2	2	2
	24	*5MMT722SZ001	2BR20370	SHAFT EXIT	1	1	1	1
	25	*5MMW151LD007	2D920280	SPRING ACTUATOR	1	1	1	1
	26	*5MMW161SD012	2D920260	SPRING EXIT L	1	1	1	1
	27	*5MMW161SD013	2D920270	SPRING EXIT R	1	1	1	1
	28	*5MMW261LJ032	2BM21060	SPRING SOL	1	1	1	1
	29	*5MMW361SD005	2D920250	SPRING PRESS	2	2	2	2
	30	*5MMW501LD003	2D920300	SPRING PULLEY EXIT	2	2	2	2
	31	*5MMX641RD001	2D920220	PLATE HEATER L	1	1	1	1
	32	*5MMX641SD003	2D920170	PLATE PRESS L	1	1	1	1
	33	*5MMX641SD004	2D920180	PLATE PRESS R	1	1	1	1
	34	*5MMX641SD005	2D920190	PLATE RELEASE L	1	1	1	1
	35	*5MMX641SD006	2D920200	PLATE RELEASE R	1	1	1	1
	36	*5MMX876SD003	2D920050	FRAME FUSER	1	1	1	1
	37	*5MVB663KB003	2D920120	COVER FUSER R	1	1	1	1
	38	*5MVB833KB004	2D920330	GUIDE ENTRANCE LOW	1	1	1	1
	39	*5MVB866KB002	2D920320	FRAME FUSER UP	1	1	1	1
⊙	40	*5MVG154XN001	2D920020	GEAR HEAT Z43S	1	1	1	1
	41	*5MVM111RB002	2BR20450	RUBBER PIN	1	1	1	1
⊙	42	*5MVM180XN002	2D920030	BUSH FUSER	4	4	4	4
⊙	43	*5MVM266DN006	2BS02290	BUSH FD	1	1	1	1

SP	Ref. No.	Part.No.	Alternative.	Description	Quantity			
					110	120	230	240
⊙	44	*5MVX731CB004	2D920150	ACTUATOR FUSER	1	1	1	1
	45	*5MVX833CB006	2D920140	GUIDE CHANGE	1	1	1	1
	46	*5MVX865KB003	2D920080	GUIDE EXIT	1	1	1	1
	47	*5MVX872KB001	2D920130	COVER FUSER LOW	1	1	1	1
⊙	48	*YF0A1530	5FYFFQ15001++03	THERMOSTAT 250V150C	1	1	1	1
⊙	49	*YF0A1530	5FYFFQ15001++03	THERMOSTAT 250V150C	1	1	1	1
	101	5MBSP43006NW++R	B4A03060	TP HEAD SCREW(+)/ M3 X 6 DRFREE				
	102	5MBTPB3006TW++R	B1A53060	BIND T.T SCREW(+)/ M3 X 6 CRFREE S-T				
	103	5MBTPB3008PW++R	B1A63080	BIND T.T SCREW(+)/ M3 X 8 CRFREE P-T				
	104	5MBTPB3008TW++R	B1A53080	BIND T.T SCREW(+)/ M3 X 8 CRFREE S-T				
	105	5MBTPB3012PW++R	B1A63120	BIND T.T SCREW(+)/ M3 X 12 CRFREE P-T				

- Parts with "*" are component parts or sub-assemblies of the assembly appearing immediately above them.
- Parts with "⊙" indicate the spare parts.

- Parts with "•" are component parts or sub-assembly with "•" appearing immediately above them.

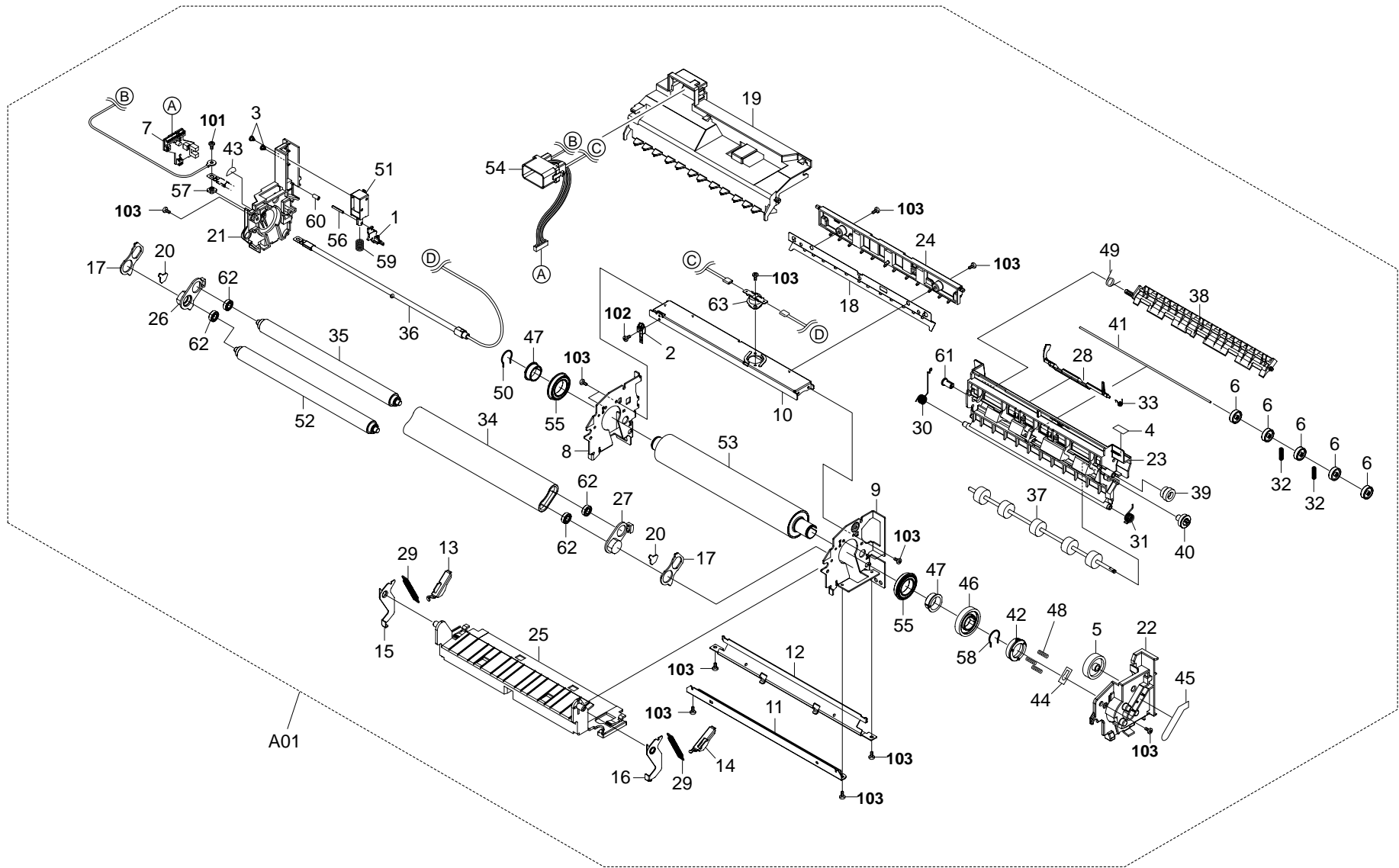


FIG. 6 Fuser Unit (20/22ppm EUR/USA)

2HJ/2HK-2

SP	Ref. No.	Part.No.	Alternative.	Description	Quantity			
					110	120	230	240
⊙	A01	302HK93050	2HK93050	FK-521(U) FUSER UNIT (20/22ppm EUR/USA)	1	1		
⊙	A01	302HK93040	2HK93040	FK-521(E) FUSER UNIT (20ppm EUR)			1	1
	1	*302D920012	2D920012	ACTUATOR SOL	1	1	1	1
⊙	2	*302D927091	2D927091	THERMISTOR ASSY	1	1	1	1
	3	*302F325010	2F325010	STUD SCREW M3	2	2	2	2
	4	*302F325030	2F325030	LABEL EXIT	1	1	1	1
⊙	5	*302F325040	2F325040	GEAR JOINT Z36	1	1	1	1
⊙	6	*302F325070	2F325070	PULLEY EXIT	5	5	5	5
⊙	7	*302F401280	2F401280	P.W.B. ASSY FUSER	1	1	1	1
	8	*302F425012	2F425012	PLATE FUSER L	1	1	1	1
	9	*302F425021	2F425021	PLATE FUSER R	1	1	1	1
	10	*302F425030	2F425030	STAY FUSER A	1	1	1	1
	11	*302F425040	2F425040	STAY FUSER B	1	1	1	1
	12	*302F425050	2F425050	STAY FUSER C	1	1	1	1
	13	*302F425060	2F425060	PLATE PRESS L	1	1	1	1
	14	*302F425070	2F425070	PLATE PRESS R	1	1	1	1
	15	*302F425080	2F425080	PLATE RELEASE L	1	1	1	1
	16	*302F425090	2F425090	PLATE RELEASE R	1	1	1	1
	17	*302F425100	2F425100	PLATE PITCH	2	2	2	2
	18	*302F425110	2F425110	PLATE SEPARATOR	1	1	1	1
	19	*302F425120	2F425120	COVER FUSER UP	1	1	1	1
	20	*302F425130	2F425130	PULLEY PRESS	2	2	2	2
	21	*302F425141	2F425141	COVER FUSER L	1	1	1	1
	22	*302F425151	2F425151	COVER FUSER R	1	1	1	1
	23	*302F425161	2F425161	GUIDE EXIT	1	1	1	1
	24	*302F425171	2F425171	GUIDE EXIT UP	1	1	1	1
	25	*302F425180	2F425180	GUIDE ENTRANCE	1	1	1	1
	26	*302F425194	2F425194	HOLDER BELT L	1	1	1	1
	27	*302F425204	2F425204	HOLDER BELT R	1	1	1	1
⊙	28	*302F425212	2F425212	ACTUATOR FUSER	1	1	1	1
⊙	29	*302F425220	2F425220	SPRING PRESS	2	2	2	2
	30	*302F425230	2F425230	SPRING EXIT L	1	1	1	1
	31	*302F425240	2F425240	SPRING EXIT R	1	1	1	1
	32	*302F425250	2F425250	SPRING PULLEY EXIT	2	2	2	2
	33	*302F425260	2F425260	SPRING ACTUATOR	1	1	1	1
⊙	34	*302F425270	2F425270	BELT FUSER	1	1	1	1
⊙	35	*302F425290	2F425290	ROLLER BELT	1	1	1	1
⊙	36	*302F425311	2F425311	LAMP HEATER 120V	1	1		
⊙	36	*302F425301	2F425301	LAMP HEATER 240V			1	1
⊙	37	*302F425330	2F425330	ROLLER EXIT	1	1	1	1
	38	*302F425341	2F425341	GUIDE CHANGE	1	1	1	1
⊙	39	*302F425350	2F425350	GEAR IDLE Z15S-Z18S	1	1	1	1
⊙	40	*302F425361	2F425361	GEAR EXIT Z18S	1	1	1	1
	41	*302F425370	2F425370	SHAFT EXIT	1	1	1	1
	42	*302F425390	2F425390	SLEEVE FUSER GEAR	1	1	1	1
	43	*302F425400	2F425400	SEAL LUMP HOLD R	1	1	1	1
	44	*302F425410	2F425410	SEAL LUMP HOLD L	1	1	1	1
	45	*302F425420	2F425420	SEAL COVER FUSER	1	1	1	1

SP	Ref. No.	Part.No.	Alternative.	Description	Quantity			
					110	120	230	240
⊙	46	*302F425440	2F425440	GEAR HEAT Z43S	1	1	1	1
⊙	47	*302F425450	2F425450	BUSH FUSER	2	2	2	2
	48	*302F425460	2F425460	SPRING SLEEVE	3	3	3	3
	49	*302F425470	2F425470	SPRING CHANGE	1	1	1	1
⊙	50	*302F425480	2F425480	RING STOP	1	1	1	1
⊙	51	*302HJ44010	2HJ44010	SOLENOID	1	1	1	1
⊙	52	*302HK25020	2HK25020	ROLLER BELT A	1	1	1	1
⊙	53	*302HK25030	2HK25030	ROLLER HEAT	1	1	1	1
	54	*302HK46010	2HK46010	CONN. CORD ASSY S03206	1	1	1	1
⊙	55	*5MBE6804ZZNR	2D920350	FUSER BEARING /6804ZZNR M/20D	2	2	2	2
	56	*5MBP2518WXP	E0025180	SPRING PIN	1	1	1	1
⊙	57	*5MMS111SL002	2BY20050	NUT FUSER A	1	1	1	1
⊙	58	*5MMW171LD007	2D920310	RING STOP	1	1	1	1
	59	*5MMW261LJ032	2BM21060	SPRING SOL	1	1	1	1
	60	*5MVM111RB002	2BR20450	RUBBER PIN	1	1	1	1
⊙	61	*5MVM266DN006	2BS02290	BUSH FD	1	1	1	1
⊙	62	*7BE686ZZ++++H01	BE010080	FUSER BELT BEARING	4	4	4	4
⊙	63	*YF0A1530	5FYFQ15001++03	THERMOSTAT 250V/150 C/CS-7SA 6A	1	1	1	1
	101	5MBSP43006NW++R	B4A03060	TP HEAD SCREW(+)/ M3 X 6 DRFREE				
	102	5MBTPB3008TW++R	B1A53080	BIND T.T SCREW(+)/ M3 X 8 CRFREE S-T				
	103	5MBTPB3006TW++R	B1A53060	BIND T.T SCREW(+)/ M3 X 6 CRFREE S-T				

• Parts with "*" are component parts or sub-assemblies of the assembly appearing immediately above them.

• Parts with "⊙" indicate the spare parts.

• Parts with "••" are component parts or sub-assembly with "•" appearing immediately above them.

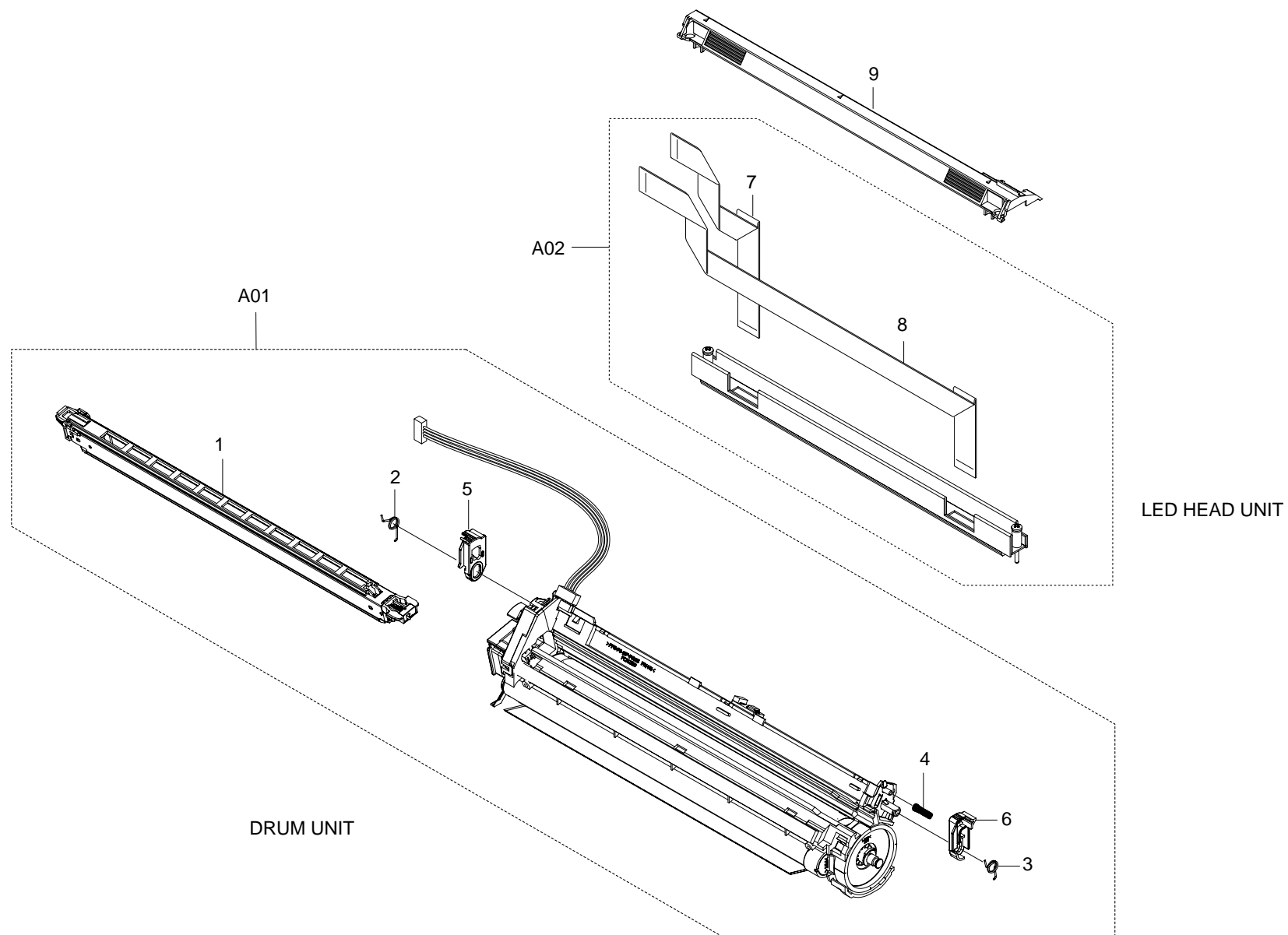


FIG. 7 Drum Unit / LED Unit

2HJ/2HK-1

SP	Ref. No.	Part.No.	Alternative.	Description	Quantity			
					110	120	230	240
⊙	A01	302HJ93010	2HJ93010	DK-511 DRUM UNIT (16/17ppm EUR/USA)	4	4	4	4
⊙	A01	302HK93010	2HK93010	DK-521 DRUM UNIT (20/22ppm EUR/USA)	4	4	4	4
⊙	1	*302F393190	2F393190	MC-510 MCH ASSY	4	4	4	4
	2	*5MMW161LD056	2D908360	SPRING LOCK L	4	4	4	4
	3	*5MMW161LD057	2D908370	SPRING LOCK R	4	4	4	4
	4	*5MMW241LD024	2D908000	SPRING EARTH	4	4	4	4
	5	*5MVX421SL001	2D908340	LEVER DRUM L	4	4	4	4
	6	*5MVX422SL003	2D908350	LEVER DRUM R	4	4	4	4
⊙	A02	302F393091	2F393091	LK-510 LED HEAD UNIT (16/17ppm EUR/USA)	4	4	4	4
⊙	A02	302F493082	2F493082	LK-520 LED HEAD UNIT (20/22ppm EUR/USA)	4	4	4	4
⊙	7	*302F446110	2F446110	CONN.CORD ASSY S03143	4	4	4	4
⊙	8	*302F446120	2F446120	CONN. CORD ASSY S03144	4	4	4	4
⊙	9	302F311021	2F311021	COVER LED	4	4	4	4

- Parts with "*" are component parts or sub-assemblies of the assembly appearing immediately above them.
- Parts with "⊙" indicate the spare parts.

- Parts with "•" are component parts or sub-assembly with "•" appearing immediately above them.

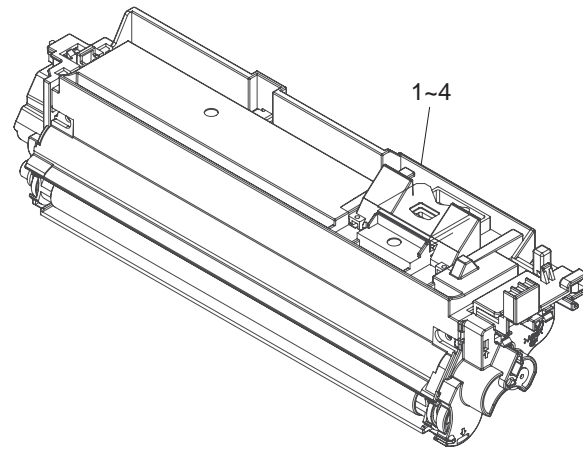


FIG. 8 Developer Unit

2HJ/2HK-2

SP	Ref. No.	Part.No.	Alternative.	Description	Quantity			
					110	120	230	240
⊙	1	302HJ93020	2HJ93020	DV-520Y DLP UNIT Y (16ppm EUR)	1		1	1
⊙	1	302HJ93090	2HJ93090	DV-522Y DLP UNIT Y (17ppm USA)		1		
⊙	1	302F393031	2F393031	DV-510Y DLP UNIT Y (20ppm EUR)	1		1	1
⊙	1	302F393131	2F393131	DV-512Y DLP UNIT Y (22ppm USA)		1		
⊙	2	302HJ93030	2HJ93030	DV-520M DLP UNIT M (16ppm EUR)	1		1	1
⊙	2	302HJ93100	2HJ93100	DV-522M DLP UNIT M (17ppm USA)		1		
⊙	2	302F393051	2F393051	DV-510M DLP UNIT M (20ppm EUR)	1		1	1
⊙	2	302F393141	2F393141	DV-512M DLP UNIT M (22ppm USA)		1		
⊙	3	302HJ93040	2HJ93040	DV-520C DLP UNIT C (16ppm EUR)	1		1	1
⊙	3	302HJ93110	2HJ93110	DV-522C DLP UNIT C (17ppm USA)		1		
⊙	3	302F393041	2F393041	DV-510C DLP UNIT C (20ppm EUR)	1		1	1
⊙	3	302F393151	2F393151	DV-512C DLP UNIT C (22ppm USA)		1		
⊙	4	302HJ93050	2HJ93050	DV-520K DLP UNIT K (16ppm EUR)	1		1	1
⊙	4	302HJ93120	2HJ93120	DV-522K DLP UNIT K (17ppm USA)		1		
⊙	4	302F393021	2F393021	DV-510K DLP UNIT K (20ppm EUR)	1		1	1
⊙	4	302F393161	2F393161	DV-512K DLP UNIT K (22ppm USA)		1		

- Parts with "•" are component parts or sub-assemblies of the assembly appearing immediately above them.
- Parts with "⊙" indicate the spare parts.

- Parts with "••" are component parts or sub-assembly with "•" appearing immediately above them.

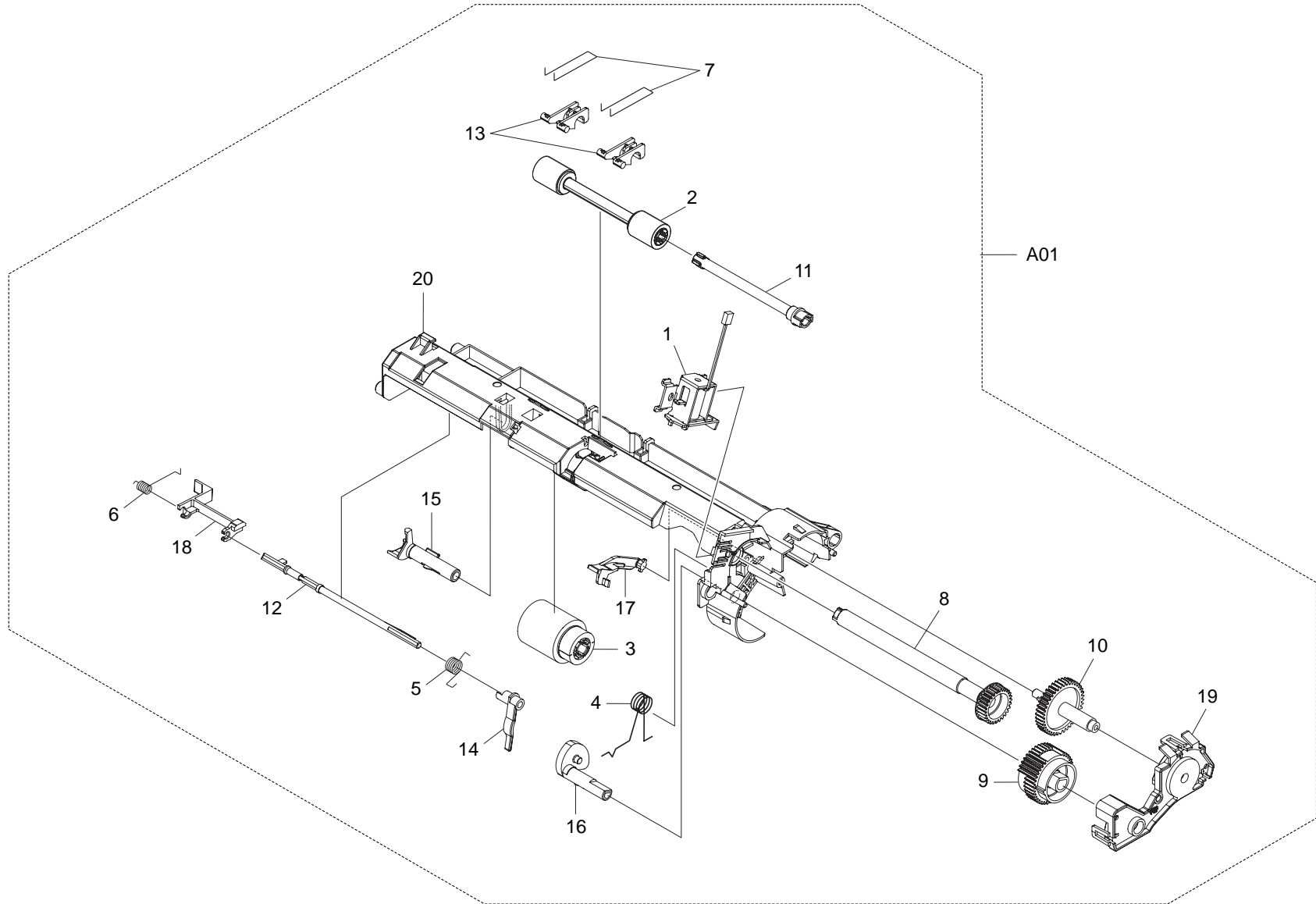


FIG. 9 Frame MP Assembly

2HJ/2HK

SP	Ref. No.	Part.No.	Alternative.	Description	Quantity			
					110	120	230	240
⊙	A01	302D968391	2D968391	FRAME MP ASSY	1	1	1	1
⊙	1	*302D944011	2D944011	SOLENOID M/P ASSY	1	1	1	1
⊙	2	*5AAVR0LL+050	2CL16120	ROLL MID M/P ASSY	1	1	1	1
⊙	3	*5AAVR0LL+051	2CL16130	ROLLER M/P ASSY	1	1	1	1
	4	*5MMW161LD043	2BR02450	SPRING CAM M/P	1	1	1	1
	5	*5MMW161SD009	2BR02530	SP ACTUATOR M/P C	1	1	1	1
	6	*5MMW161SD010	2BR02520	SP ACTUATOR M/P B	1	1	1	1
	7	*5MMW601SD001	2BR02440	SPRING MID M/P	2	2	2	2
⊙	8	*5MVG133DN008	2BS02230	GEAR M/P Z27	1	1	1	1
	9	*5MVG148DN063	2BS02280	GEAR M/P Z40	1	1	1	1
	10	*5MVG158XN005	2D916010	GEAR MID Z42S	1	1	1	1
	11	*5MVT676CB003	2BS02320	SHAFT MID B	1	1	1	1
⊙	12	*5MVT754SB001	2BS02330	ACTUATOR M/P A	1	1	1	1
⊙	13	*5MVX321DN014	2BS02340	BUSH MID M/P	2	2	2	2
⊙	14	*5MVX421SB021	2BS02360	ACTUATOR M/P C	1	1	1	1
⊙	15	*5MVX422DN007	2BS02370	HOLDER FEED M/P	1	1	1	1
⊙	16	*5MVX433DN002	2BS02380	CAM M/P	1	1	1	1
	17	*5MVX522DN004	2BS02400	LEVER CAM	1	1	1	1
⊙	18	*5MVX621SB010	2BS02410	ACTUATOR M/P B	1	1	1	1
	19	*5MVX662DN003	2BS02440	HOLDER CLUTCH M/P	1	1	1	1
	20	*5MVX866CH011	2FP02130	FRAME M/P	1	1	1	1

- Parts with "*" are component parts or sub-assemblies of the assembly appearing immediately above them.
- Parts with "⊙" indicate the spare parts.

- Parts with "•" are component parts or sub-assembly with "•" appearing immediately above them.

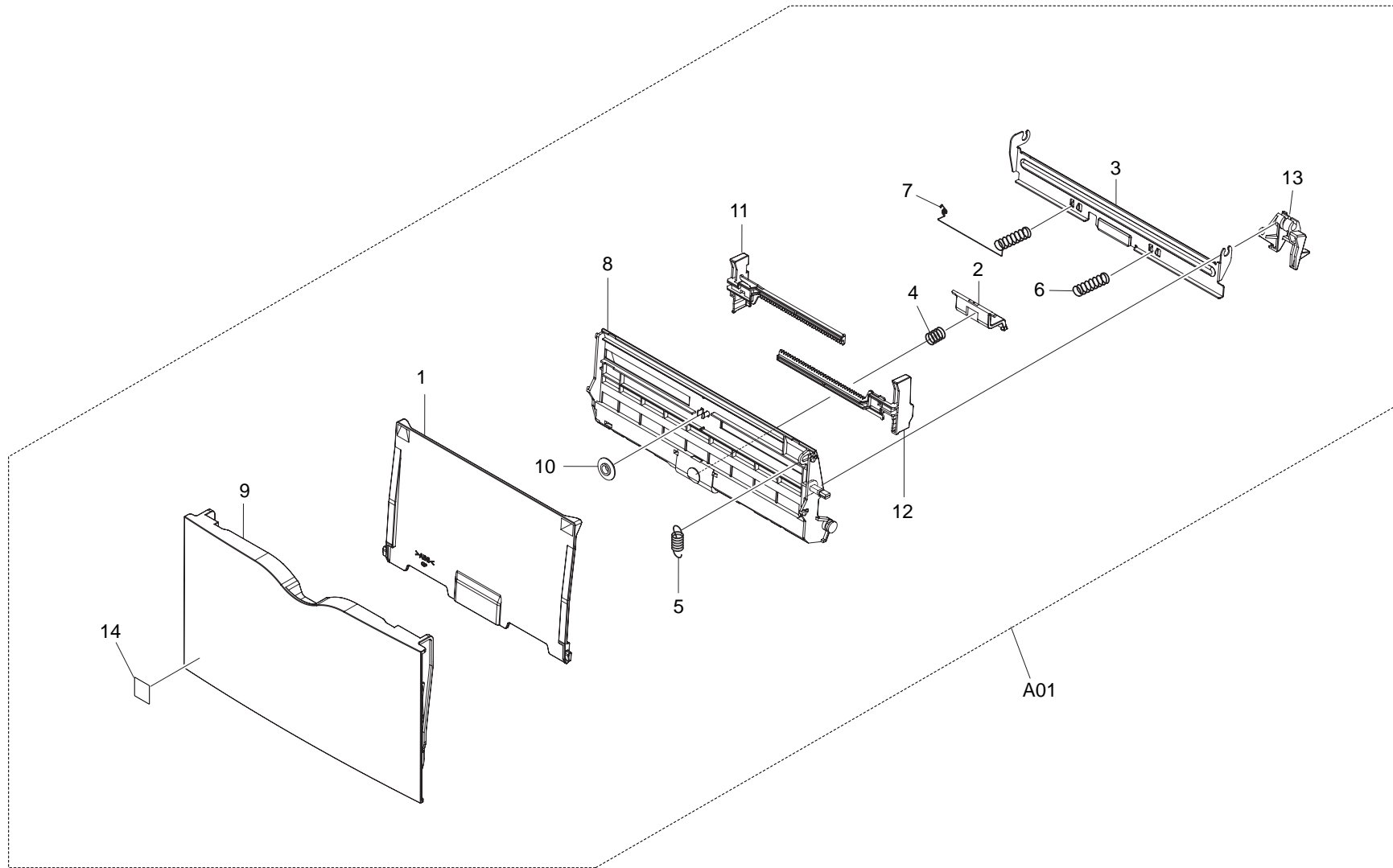


FIG. 10 MP Tray

2HJ/2HK

SP	Ref. No.	Part.No.	Alternative.	Description	Quantity			
					110	120	230	240
⊙	A01	302HJ00530	2HJ00530	TRAY M/P ASSY		1		
⊙	A01	5AAVCASET282	2D900010	TRAY M/P ASSY	1		1	1
	1	*302D906012	2D906012	TRAY M/P	1	1	1	1
⊙	2	*5AAVCASET248	2BR00140	SEPARATOR M/P ASSY	1	1	1	1
⊙	3	*5AAVCASET249	2BR00150	BOTTOM MULTI ASSY	1	1	1	1
	4	*5MMW261LD039	2BS06160	SPRING SEPARATOR	1	1	1	1
	5	*5MMW261SM001	2BS06170	SPRING LOCK M/P	1	1	1	1
	6	*5MMW461SD004	2BS06190	SP BOTTOM M/P R	1	1	1	1
	7	*5MMW461SD006	2D916020	SP BOTTOM M/P L	1	1	1	1
	8	*5MVB864SH009	2BS06250	BASE M/P	1	1	1	1
⊙	9	*5MVB878SH001	2D906020	COVER M/P	1	1	1	1
	10	*5MVG127DH001	2B700380	GEAR MANUAL	1	1	1	1
	11	*5MVL673DH003	2D906030	GUIDE M/P L	1	1	1	1
	12	*5MVL673DH004	2D906040	GUIDE M/P R	1	1	1	1
	13	*5MVX533DN002	2BS06460	BRACKET BOTTOM	1	1	1	1
⊙	14	302G634070	2G634070	LABEL ENERGY STAR	1	1	1	1

- Parts with "*" are component parts or sub-assemblies of the assembly appearing immediately above them.
- Parts with "⊙" indicate the spare parts.

- Parts with "••" are component parts or sub-assembly with "•" appearing immediately above them.

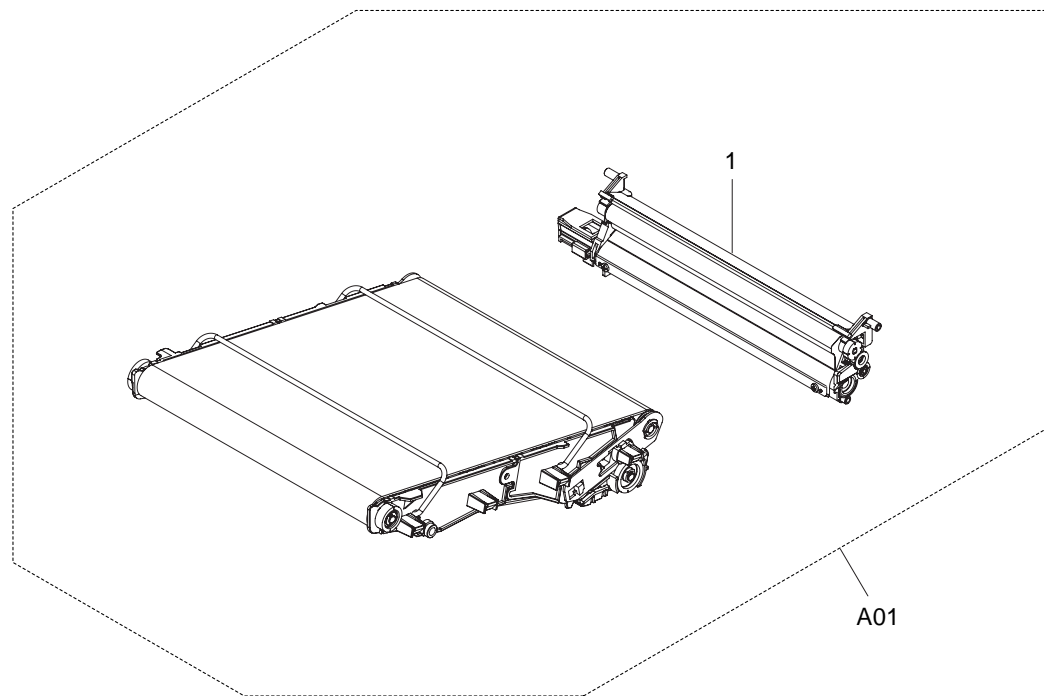


FIG. 11 Primary Transfer Unit

2HJ/2HK-1

SP	Ref. No.	Part.No.	Alternative.	Description	Quantity			
					110	120	230	240
⊙	A01	302HJ93060	2HJ93060	TR-511 PRE TRANSFER UNIT (16/17ppm EUR/USA)	1	1	1	1
⊙	A01	302HK93060	2HK93060	TR-521 PRE TRANSFER UNIT (20/22ppm EUR/USA)	1	1	1	1
⊙	1	*302F393200	2F393200	CL-510 CLEANING UNIT	1	1	1	1

- Parts with "*" are component parts or sub-assemblies of the assembly appearing immediately above them.
- Parts with "⊙" indicate the spare parts.

- Parts with "••" are component parts or sub-assembly with "•" appearing immediately above them.

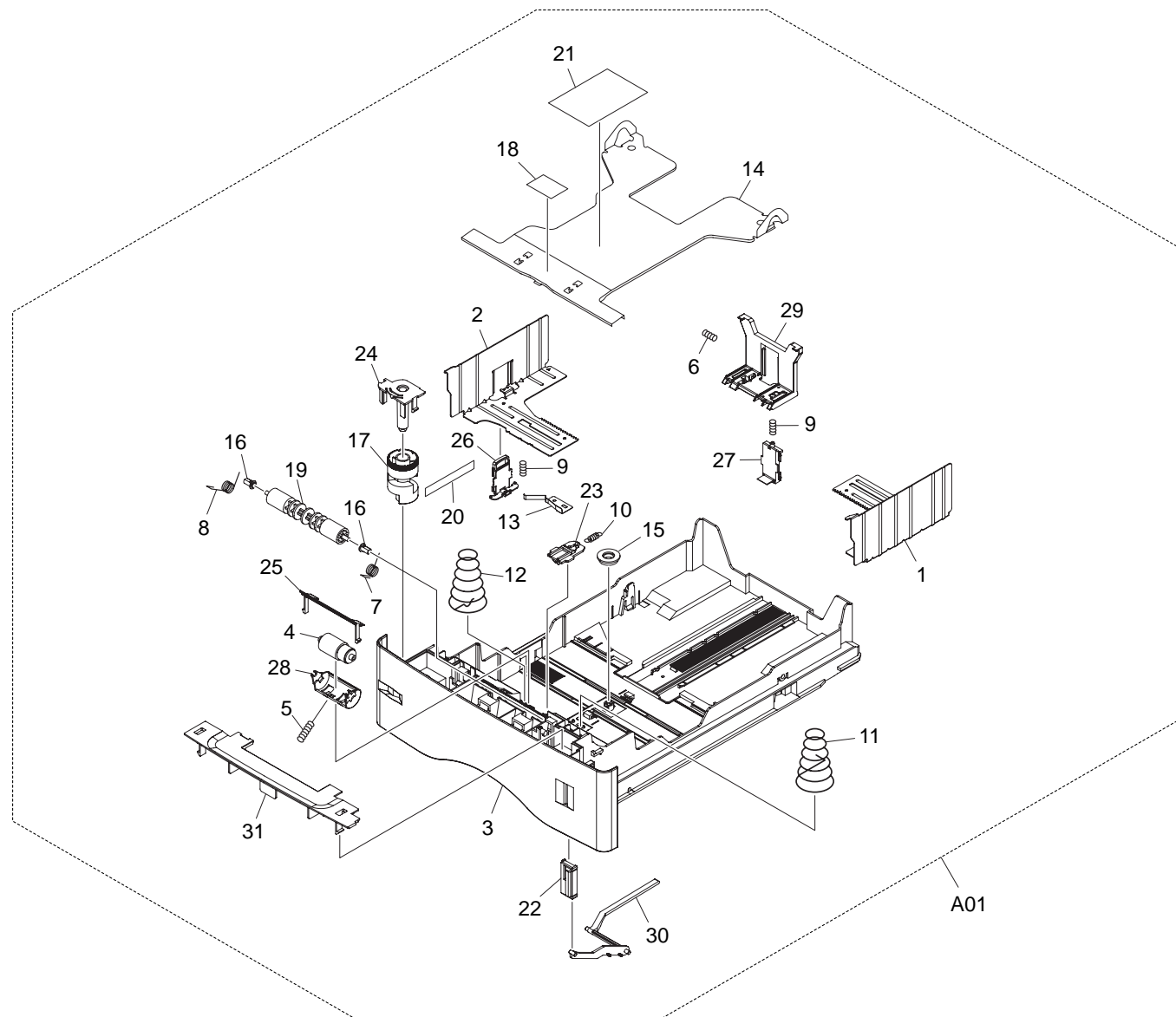


FIG. 12 Paper Cassette

2HJ/2HK

SP	Ref. No.	Part.No.	Alternative.	Description	Quantity			
					110	120	230	240
⊙	A01	2BR93380	5PLPXDSAPKX	PC-60LG(A4) CASSETTE ASSY	1			
⊙	A01	5PLPXCUIAPKX	2BR93390	PC-60LG(LTR) CASSETTE ASSY		1		
⊙	A01	5PLPXZ7APKX	2BR93360	PC-60LG(A4) CASSETTE ASSY			1	1
	1	*302BS06051	2BS06051	PLATE SIDE R	1	1	1	1
	2	*302BS06061	2BS06061	PLATE SIDE L	1	1	1	1
	3	*303DD06011	3DD06011	BASE CASSETTE LGL	1	1	1	1
⊙	4	*5AAVR0LL+052	2BR06520	RETARD ROLL ASSY	1	1	1	1
	5	*5MMW151LD004	2BS06090	SPRING RETARD	1	1	1	1
	6	*5MMW151SD003	2BS06100	SPRING END	1	1	1	1
	7	*5MMW161LD044	2BM22440	SPRING FEED R	1	1	1	1
	8	*5MMW161LD045	2BS06120	SPRING FEED L	1	1	1	1
	9	*5MMW166LD010	2B700070	SPRING LOCK GUIDE	2	2	2	2
	10	*5MMW251LD048	2BS06150	SP STOPPER BOTTOM	1	1	1	1
	11	*5MMW682LD006	2BR06380	SPRING BOTTOM	1			
	11	*5MMW682LD004	2BS06200	SPRING BOTTOM		1	1	1
	12	*5MMW682LD007	2BR06390	SPRING BOTTOM EARTH	1			
	12	*5MMW682LD005	2BS06210	SPRING BOTTOM EARTH		1	1	1
	13	*5MMX653LD004	2BS06220	EARTH PLATE	1	1	1	1
	14	*5MMX883SD004	2BS06230	PLATE BOTTOM	1	1	1	1
	15	*5MVG127DB046	2B700190	GEAR CASSETTE	1	1	1	1
⊙	16	*5MVM164DN007	2BS06320	BUSH4	2	2	2	2
	17	*5MVM586SH001	2B700210	DIAL CASSETTE	1	1	1	1
⊙	18	*5MVS421RN004	2BS06390	SHEET FRICTION	1			
⊙	18	*5MVS421RN006	2FP06040	SHEET FRICTION		1	1	1
⊙	19	*5MVT774DN001	2BS06410	ROLLER FEED	1	1	1	1
	20	*5MVL171WN03	3DD06160	LABEL SIZE LGL	1	1	1	1
	21	*5MVL221GE1J	2BR06510	LABEL OPERATION J	1			
	21	*5MVL221GE1H	2BS06430	LABEL OPERATION		1	1	1
	22	*5MVX422SD002	2BS06440	INDICATER PAPER	1	1	1	1
⊙	23	*5MVX432DN005	2BS06450	LOCK BOTTOM	1	1	1	1
	24	*5MVX543DH002	2BS06470	HOLDER DIAL	1	1	1	1
	25	*5MVX632SH005	2BS06480	GUIDE RETARD	1	1	1	1
	26	*5MVX642DG001	2BS06490	LOCK LEVER SIDE	1	1	1	1
	27	*5MVX642DG002	2BS06500	LOCK LEVER END	1	1	1	1
	28	*5MVX644DN001	2BS06510	HOLDER RETARD	1	1	1	1
	29	*5MVX664DN001	2BS06520	END FENCE	1	1	1	1
⊙	30	*5MVX764DN001	2BS06530	LEVER INDICATOR	1	1	1	1
	31	*5MVX853SH003	2BS06540	COVER ROLLER	1	1	1	1

- Parts with "*" are component parts or sub-assemblies of the assembly appearing immediately above them.
- Parts with "⊙" indicate the spare parts.

- Parts with "••" are component parts or sub-assembly with "•" appearing immediately above them.

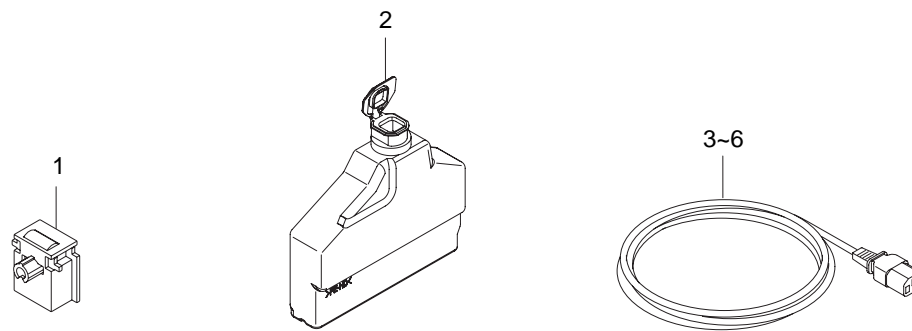


FIG. 13 Accessories

2HJ/2HK

SP	Ref. No.	Part.No.	Alternative.	Description	Quantity			
					110	120	230	240
⊙	1	5AAYTK20++07	2B570060	GC-3 KIT	1	1	1	1
⊙	2	302D993241	2D993241	WT-500	2	2	2	2
	3	3065027601	65027601	AC CORD ASSY	1			
	3	2DC27410	2DC27410	AC CORD ASSY		1		
	3	2BJ27300	2BJ27300	AC CORD ASSY (KMA 220V)			1	
	3	302FV45040	2FV45040	AC CORD ASSY (KMAUS)				1
	4	5AACAC480BSA++P	2A827840	AC CORD ASSY (KMUK)			1	
	5	302FV45020	2FV45020	AC CORD ASSY (Excl. KMUK)			1	
	6	7AAACCSG+10H002	AA047510	AC CORD ASSY (KMSG)			1	

- Parts with "•" are component parts or sub-assemblies of the assembly appearing immediately above them.
- Parts with "⊙" indicate the spare parts.

- Parts with "••" are component parts or sub-assembly with "•" appearing immediately above them.

FIG. 14 Packing Assemblies

SP	Ref. No.	Part.No.	Alternative.	Description	Quantity			
					110	120	230	240
⊙	1	302HJ00340	2HJ00340	PACKING ASSY (17ppm USA)		1		
⊙	1	302HJ00320	2HJ00320	PACKING ASSY (16ppm EUR)	1		1	1
⊙	2	302HK00210	2HK00210	PACKING ASSY (22ppm USA)		1		
⊙	2	302HK00190	2HK00190	PACKING ASSY (20ppm EUR)	1		1	1
⊙	3	302F450080	2F450080	POLY BAG	1	1	1	1

• Parts with "*" are component parts or sub-assemblies of the assembly appearing immediately above them.

• Parts with "⊙" indicate the spare parts.

• Parts with "••" are component parts or sub-assembly with "•" appearing immediately above them.

INDEX

2HJ/2HK

SP	Part.No.	Alternative.	Description	Fig.No.
⊙	2B720380	5MVG127DW004	GEAR IDLE Z16	2
	2BJ27300	2BJ27300	AC CORD ASSY (KMA 220V)	13
⊙	2BR93380	5PLPXDSAPKX	PC-60LG(A4) CASSETTE ASSY	12
	2BS16431	2BS16431	LEVER LOCK	5
	2DC27410	2DC27410	AC CORD ASSY	13
	302BS06051	2BS06051	PLATE SIDE R	12
	302BS06061	2BS06061	PLATE SIDE L	12
	302D902311	2D902311	ROD INTERLOCK	2
	302D902372	2D902372	COVER HARNESS	2
⊙	302D902391	2D902391	BRACKET FD GEAR	2
	302D902542	2D902542	BRACKET FAN	2
	302D902551	2D902551	PLATE EARTH FD	2
	302D903011	2D903011	BOX CONTROLLER	4
	302D903071	2D903071	RAIL OPTION	4
⊙	302D904042	2D904042	COVER SIDE	1
⊙	302D904053	2D904053	COVER REAR	1
	302D906012	2D906012	TRAY M/P	10
⊙	302D915211	2D915211	GEAR DRIVE FUSER Z22	3
	302D916051	2D916051	BASE FEED	5
	302D916071	2D916071	GUIDE PAPER	5
⊙	302D916081	2D916081	PAPER CHUTE	5
⊙	302D916221	2D916221	GEAR IDLE Z23S	5
	302D920012	2D920012	ACTUATOR SOL	6
⊙	302D920041	2D920041	GEAR EXIT Z15S	6
⊙	302D922041	2D922041	GEAR Z35S	3
⊙	302D922051	2D922051	GEAR Z30S	3
⊙	302D922061	2D922061	GEAR Z38S-Z14S	3
⊙	302D922071	2D922071	GEAR Z38S	3
⊙	302D922081	2D922081	GEAR CL Z21S	3
⊙	302D922101	2D922101	GEAR Z93S-Z24S	3
⊙	302D922112	2D922112	GEAR Z48S	3
⊙	302D922161	2D922161	GEAR Z21H-Z20H	3
⊙	302D922181	2D922181	GEAR Z72H-Z22H	3
	302D925010	2D925010	COVER FUSER L	6
	302D925020	2D925020	RING STOP	6
⊙	302D927091	2D927091	THERMISTOR ASSY	6
⊙	302D944011	2D944011	SOLENOID M/P ASSY	9
⊙	302D945020	2D945020	SWITCHING REGULATOR /MPS3227L	4
⊙	302D968391	2D968391	FRAME MP ASSY	9
⊙	302D993241	2D993241	WT-500	13
⊙	302F300371	2F300371	COVER LEFT ASSY	1
⊙	302F300390	2F300390	COVER RIGHT ASSY	1
⊙	302F300430	2F300430	WASTE TONER ASSY	2
	302F300660	2F300660	BRACKET HV MAIN ASSY	3
	302F300670	2F300670	DISCHARGER ASSY	5
⊙	302F300830	2F300830	COVER TOP ASSY	1
⊙	302F300850	2F300850	ROLLER TRANSFER ASSY	5
⊙	302F300890	2F300890	BRACKET FD GEAR ASSY	2
⊙	302F302010	2F302010	ROLLER FD LOW	2
	302F302020	2F302020	SPRING EARTH FD	2

SP	Part.No.	Alternative.	Description	Fig.No.
	302F302030	2F302030	PIN CONTACT BIAS	2
⊙	302F304020	2F304020	ROLLER FD	1
⊙	302F304030	2F304030	DISCHARGER FD	1
⊙	302F311021	2F311021	COVER LED	7
⊙	302F324000	2F324000	ROLLER REGIST UP	5
⊙	302F324020	2F324020	ROLLER REGIST LOW	5
	302F324030	2F324030	SHAFT ROLL GUIDE	5
⊙	302F324040	2F324040	SENSOR DOC	5
⊙	302F325000	2F325000	ROLLER EXIT	6
	302F325010	2F325010	STUD SCREW M3	6
	302F325020	2F325020	SEAL HEATER R	6
	302F325030	2F325030	LABEL EXIT	6
⊙	302F325040	2F325040	GEAR JOINT Z36	6
⊙	302F325060	2F325060	GEAR IDLE Z18	6
⊙	302F325070	2F325070	PULLEY EXIT	6
⊙	302F331010	2F331010	PLATE DRIVE MAIN	3
⊙	302F331022	2F331022	GEAR Z40H	3
	302F331030	2F331030	BRACKET MOTOR	3
	302F331041	2F331041	PLATE IDLE ARM	3
	302F331050	2F331050	LEVER PLATE IDLE	3
⊙	302F331060	2F331060	CAM GEAR Z34H	3
⊙	302F331081	2F331081	LEVER CAM	3
	302F331090	2F331090	SPRING IDLE ARM	3
	302F331100	2F331100	SPRING LEVER	3
⊙	302F331120	2F331120	CLUTCH REGIST	3
⊙	302F331130	2F331130	CLUTCH FEED	3
	302F331140	2F331140	BRACKET DRIVE FEED	3
	302F331150	2F331150	BRACKET HV MAIN	3
⊙	302F331160	2F331160	HOOK CRANK	3
	302F331170	2F331170	SPRING HOOK CRANK	3
	302F331180	2F331180	PIN HV CONTACT	3
	302F331190	2F331190	CONTACT MAIN B	3
	302F331200	2F331200	SPRING HV MAIN	3
⊙	302F331210	2F331210	SHAFT CLUTCH B	3
⊙	302F331220	2F331220	SHAFT CLUTCH	3
⊙	302F331250	2F331250	GEAR Z43S	3
⊙	302F331260	2F331260	GEAR Z56H-Z20S	3
	302F344011	2F344011	FAN MOTOR	2
⊙	302F344021	2F344021	FAN MOTOR	3
⊙	302F344031	2F344031	FAN MOTOR	2
⊙	302F344040	2F344040	DC MOTOR	3
⊙	302F344051	2F344051	STEPPING MOTOR FEED	3
⊙	302F345011	2F345011	TRANS ASSY HI VOLTAGE MAIN	2
⊙	302F345021	2F345021	TRANS ASSY HI VOLTAGE DLP	2
⊙	302F393021	2F393021	DV-510K DLP UNIT K	8
⊙	302F393031	2F393031	DV-510Y DLP UNIT Y	8
⊙	302F393041	2F393041	DV-510C DLP UNIT C	8
⊙	302F393051	2F393051	DV-510M DLP UNIT M	8
⊙	302F393061	2F393061	FEED TRANS UNIT	5
⊙	302F393071	2F393071	FK-510(E) FUSER UNIT	6

• Parts with "⊙" indicate the spare parts.

SP	Part.No.	Alternative.	Description	Fig.No.	SP	Part.No.	Alternative.	Description	Fig.No.
⊙	302F393081	2F393081	FK-510(U) FUSER UNIT	6	⊙	302F425440	2F425440	GEAR HEAT Z43S	6
⊙	302F393091	2F393091	LK-510 LED HEAD UNIT	7	⊙	302F425450	2F425450	BUSH FUSER	6
⊙	302F393111	2F393111	DR-510B DRIVE FEED UNIT	3	⊙	302F425460	2F425460	SPRING SLEEVE	6
⊙	302F393121	2F393121	DR-510C DRIVE FUSER UNIT	3	⊙	302F425470	2F425470	SPRING CHANGE	6
⊙	302F393131	2F393131	DV-512Y DLP UNIT Y	8	⊙	302F425480	2F425480	RING STOP	6
⊙	302F393141	2F393141	DV-512M DLP UNIT M	8	⊙	302F431011	2F431011	STEPPING MOTOR FUSER	3
⊙	302F393151	2F393151	DV-512C DLP UNIT C	8	⊙	302F431021	2F431021	STEPPING MOTOR FEED	3
⊙	302F393161	2F393161	DV-512K DLP UNIT K	8	⊙	302F446110	2F446110	CONN.CORD ASSY S03143	7
⊙	302F393190	2F393190	MC-510 MCH ASSY	7	⊙	302F446120	2F446120	CONN. CORD ASSY S03144	7
⊙	302F393200	2F393200	CL-510 CLEANING UNIT	11	⊙	302F450080	2F450080	POLY BAG	14
⊙	302F401280	2F401280	P.W.B. ASSY FUSER	6	⊙	302F493041	2F493041	DR-520B DRIVE FEED UNIT	3
⊙	302F425012	2F425012	PLATE FUSER L	6	⊙	302F493051	2F493051	DR-520C DRIVE FUSER UNIT	3
⊙	302F425021	2F425021	PLATE FUSER R	6	⊙	302F493082	2F493082	LK-520 LED HEAD UNIT	7
⊙	302F425030	2F425030	STAY FUSER A	6	⊙	302F939090	2F939090	CAP NETWORK	4
⊙	302F425040	2F425040	STAY FUSER B	6	⊙	302FP06100	2FP06100	ROLLER GUIDE ASSY	5
⊙	302F425050	2F425050	STAY FUSER C	6	⊙	302FV45020	2FV45020	AC CORD ASSY (Excl. KMUK)	13
⊙	302F425060	2F425060	PLATE PRESS L	6	⊙	302FV45040	2FV45040	AC CORD ASSY (KMAUS)	13
⊙	302F425070	2F425070	PLATE PRESS R	6	⊙	302G634070	2G634070	LABEL ENERGY STAR	10
⊙	302F425080	2F425080	PLATE RELEASE L	6	⊙	302GV45010	2GV45010	SWITCHING REGULATOR /J	4
⊙	302F425090	2F425090	PLATE RELEASE R	6	⊙	302HJ00010	2HJ00010	KEY BOARD ASSY	1
⊙	302F425100	2F425100	PLATE PITCH	6	⊙	302HJ00020	2HJ00020	SENSOR ID ASSY	2
⊙	302F425110	2F425110	PLATE SEPARATOR	6	⊙	302HJ00040	2HJ00040	BRACKET HV ASSY /C5015	2
⊙	302F425120	2F425120	COVER FUSER UP	6	⊙	302HJ00050	2HJ00050	TONER MOTOR ASSY	2
⊙	302F425130	2F425130	PULLEY PRESS	6	⊙	302HJ00320	2HJ00320	PACKING ASSY	14
⊙	302F425141	2F425141	COVER FUSER L	6	⊙	302HJ00340	2HJ00340	PACKING ASSY	14
⊙	302F425151	2F425151	COVER FUSER R	6	⊙	302HJ00530	2HJ00530	TRAY M/P ASSY	10
⊙	302F425161	2F425161	GUIDE EXIT	6	⊙	302HJ01020	2HJ01020	P.W.BOARD ASSY LEDRLY	2
⊙	302F425171	2F425171	GUIDE EXIT UP	6	⊙	302HJ01100	2HJ01100	P.W.BOARD ASSY ENGRLY	3
⊙	302F425180	2F425180	GUIDE ENTRANCE	6	⊙	302HJ01130	2HJ01130	P.W.B.ASSY ENGINE WITH SOFTWARE(SP)	4
⊙	302F425194	2F425194	HOLDER BELT L	6	⊙	302HJ01140	2HJ01140	P.W.BOARD ASSY SENSOR	2
⊙	302F425204	2F425204	HOLDER BELT R	6	⊙	302HJ04040	2HJ04040	PLATE EMBLEM	1
⊙	302F425212	2F425212	ACTUATOR FUSER	6	⊙	302HJ05020	2HJ05020	COVER PANEL	1
⊙	302F425220	2F425220	SPRING PRESS	6	⊙	302HJ25030	2HJ25030	ROLLER FIX UP	6
⊙	302F425230	2F425230	SPRING EXIT L	6	⊙	302HJ25040	2HJ25040	ROLLER FIX LOW	6
⊙	302F425240	2F425240	SPRING EXIT R	6	⊙	302HJ31010	2HJ31010	STEPPING MOTOR PRO	3
⊙	302F425250	2F425250	SPRING PULLEY EXIT	6	⊙	302HJ31020	2HJ31020	STEPPING MOTOR FUSER	3
⊙	302F425260	2F425260	SPRING ACTUATOR	6	⊙	302HJ39010	2HJ39010	PANEL REAR	4
⊙	302F425270	2F425270	BELT FUSER	6	⊙	302HJ44010	2HJ44010	SOLENOID	6
⊙	302F425290	2F425290	ROLLER BELT	6	⊙	302HJ44020	2HJ44020	FAN MOTOR	4
⊙	302F425301	2F425301	LAMP HEATER 240V	6	⊙	302HJ45010	2HJ45010	SWITCHING REGULATOR 230V ROHS	4
⊙	302F425311	2F425311	LAMP HEATER 120V	6	⊙	302HJ46010	2HJ46010	CONN. CORD ASSY S03194	4
⊙	302F425330	2F425330	ROLLER EXIT	6	⊙	302HJ46020	2HJ46020	CONN. CORD ASSY S03195	4
⊙	302F425341	2F425341	GUIDE CHANGE	6	⊙	302HJ46040	2HJ46040	CONN. CORD ASSY S03197	2
⊙	302F425350	2F425350	GEAR IDLE Z15S-Z18S	6	⊙	302HJ46050	2HJ46050	CONN. CORD ASSY S03198	4
⊙	302F425361	2F425361	GEAR EXIT Z18S	6	⊙	302HJ46060	2HJ46060	CONN. CORD ASSY S03199	2
⊙	302F425370	2F425370	SHAFT EXIT	6	⊙	302HJ46070	2HJ46070	CONN. CORD ASSY S03202	4
⊙	302F425390	2F425390	SLEEVE FUSER GEAR	6	⊙	302HJ46080	2HJ46080	CONN. CORD ASSY S03203	2
⊙	302F425400	2F425400	SEAL LUMP HOLD R	6	⊙	302HJ46090	2HJ46090	CONN. CORD ASSY S03204	6
⊙	302F425410	2F425410	SEAL LUMP HOLD L	6	⊙	302HJ46100	2HJ46100	CONN. CORD ASSY S03205	6
⊙	302F425420	2F425420	SEAL COVER FUSER	6	⊙	302HJ46110	2HJ46110	CONN. CORD ASSY S03207	2

• Parts with "⊙" indicate the spare parts.

SP	Part.No.	Alternative.	Description	Fig.No.	SP	Part.No.	Alternative.	Description	Fig.No.
	302HJ46170	2HJ46170	CONN. CORD ASSY S03213	2	⊙	5AAVR0LL+050	2CL16120	ROLL MID M/P ASSY	9
	302HJ46180	2HJ46180	CONN. CORD ASSY S03215	2	⊙	5AAVR0LL+051	2CL16130	ROLLER M/P ASSY	9
	302HJ46210	2HJ46210	CONN. CORD ASSY S03219	2	⊙	5AAVR0LL+052	2BR06520	RETARD ROLL ASSY	12
	302HJ46230	2HJ46230	CONN. CORD ASSY S03221	2	⊙	5AAYA37E++35	2BR68470	HOLDER FEED ASSY	5
	302HJ46300	2HJ46300	CONN. CORD ASSY S03236	5	⊙	5AAYA80E++71	2D969810	BRACKET HV DLP K ASSY	2
⊙	302HJ80100	2HJ80100	P.W.B MAIN KIT	4	⊙	5AAYA80E++72	2D969820	BRACKET HV DLP C ASSY	2
⊙	302HJ93010	2HJ93010	DK-511 DRUM UNIT	7	⊙	5AAYA80E++73	2D969830	BRACKET HV DLP Y ASSY	2
⊙	302HJ93020	2HJ93020	DV-520Y DLP UNIT Y	8	⊙	5AAYA80E++75	2D969860	CLEANER ID ASSY	2
⊙	302HJ93030	2HJ93030	DV-520M DLP UNIT M	8	⊙	5AAYTK20++07	2B570060	GC-3 KIT	13
⊙	302HJ93040	2HJ93040	DV-520C DLP UNIT C	8	⊙	5ESP01000101+01	SP000310	PUSH SWITCH 01 SN	2
⊙	302HJ93050	2HJ93050	DV-520K DLP UNIT K	8	⊙	5FRHA3A10702+01	RHOA0040	M.GLAZE R. 100M 1W	5
⊙	302HJ93060	2HJ93060	TR-511 PRE TRANSFER UNIT	11	⊙	5FSP03090001+01	SPOA0360	PUSH SWITCH 03 SN	2
⊙	302HJ93070	2HJ93070	DR-511A DRIVE PRO UNIT	3	⊙	5FZPB1212920101	WPOA0540	LAMP HEATER LOW 120V	6
⊙	302HJ93090	2HJ93090	DV-522Y DLP UNIT Y	8	⊙	5HZPB1214220901	2D920440	LAMP HEATER UP 120V	6
⊙	302HJ93100	2HJ93100	DV-522M DLP UNIT M	8	⊙	5HZPB2411520201	2D920450	LAMP HEATER LOW 240V	6
⊙	302HJ93110	2HJ93110	DV-522C DLP UNIT C	8	⊙	5HZPB2412120801	2D920400	LAMP HEATER UP 240V	6
⊙	302HJ93120	2HJ93120	DV-522K DLP UNIT K	8	⊙	5MBE6804ZZNR	2D920350	FUSER BEARING	6
⊙	302HK00010	2HK00010	KEY BOARD ASSY	1	⊙	5MBP2518WXSP	E0025180	SPRING PIN /M2.5 X 18 S-BLK	6
⊙	302HK00100	2HK00100	BRACKET HV ASSY /C5025(E)	2	⊙	5MMB861SD004	2D902200	PLATE SHIELD PWB	2
⊙	302HK00190	2HK00190	PACKING ASSY	14	⊙	5MMS111SL002	2BY20050	NUT FUSER A	6
⊙	302HK00210	2HK00210	PACKING ASSY	14	⊙	5MMS632LD001	2D902320	PLATE EARTH HV A	2
⊙	302HK01020	2HK01020	P.W.BOARD ASSY LEDRLY	2	⊙	5MMS656AX001	2D922260	SHEET MOTOR FEED	3
⊙	302HK01090	2HK01090	P.W.B.ASSY ENGINE WITH SOFTWARE(SP)	4	⊙	5MMS866SD001	2D908510	PLATE FRAME DRUM	2
⊙	302HK05010	2HK05010	COVER PANEL	1	⊙	5MMS884SD001	2D903020	LID CONTROLLER	4
⊙	302HK25020	2HK25020	ROLLER BELT A	6	⊙	5MMT263SN012++R	2D903100	SCREW OP	4
⊙	302HK25030	2HK25030	ROLLER HEAT	6	⊙	5MMT664SN002	2BR16370	SHAFT PICKUP	5
⊙	302HK31010	2HK31010	STEPPING MOTOR PRO	3	⊙	5MMT722SZ001	2BR20370	SHAFT EXIT	6
⊙	302HK45010	2HK45010	SWITCHING REGULATOR 230V ROHS	4	⊙	5MMW151LD004	2BS06090	SPRING RETARD	12
	302HK46010	2HK46010	CONN. CORD ASSY S03206	6	⊙	5MMW151LD007	2D920280	SPRING ACTUATOR	6
	302HK46040	2HK46040	CONN. CORD ASSY S03232	2	⊙	5MMW151SD003	2BS06100	SPRING END	12
	302HK46050	2HK46050	CONN. CORD ASSY S03233	3	⊙	5MMW161LD043	2BR02450	SPRING CAM M/P	9
⊙	302HK80060	2HK80060	P.W.B.MAIN KIT	4	⊙	5MMW161LD044	2BM22440	SPRING FEED R	12
⊙	302HK93010	2HK93010	DK-521 DRUM UNIT	7	⊙	5MMW161LD045	2BS06120	SPRING FEED L	12
⊙	302HK93020	2HK93020	DR-521A DRIVE PRO UNIT	3	⊙	5MMW161LD056	2D908360	SPRING LOCK L	7
⊙	302HK93040	2HK93040	FK-521(E) FUSER UNIT	6	⊙	5MMW161LD057	2D908370	SPRING LOCK R	7
⊙	302HK93050	2HK93050	FK-521(U) FUSER UNIT	6	⊙	5MMW161SD009	2BR02530	SP ACTUATOR M/P C	9
⊙	302HK93060	2HK93060	TR-521 PRE TRANSFER UNIT	11	⊙	5MMW161SD010	2BR02520	SP ACTUATOR M/P B	9
	303BH26021	3BH26021	PLATE OPTION	4	⊙	5MMW161SD012	2D920260	SPRING EXIT L	6
	303DD06011	3DD06011	BASE CASSETTE LGL	12	⊙	5MMW161SD013	2D920270	SPRING EXIT R	6
	3065027601	65027601	AC CORD ASSY	13	⊙	5MMW161SD014	2D916260	SPRING ACTUATOR REG	5
	5AACAC480BSA++P	2A827840	AC CORD ASSY (KMUK)	13	⊙	5MMW166LD010	2B700070	SPRING LOCK GUIDE	12
⊙	5AAPRIFC1030AHP	2D901460	P.W.B.ASSY KP-970 FUSER	6	⊙	5MMW171LD007	2D920310	RING STOP	6
⊙	5AAVCASET248	2BR00140	SEPARATOR M/P ASSY	10	⊙	5MMW222LD002	2BR02280	SPRING LEVER EF	2
⊙	5AAVCASET249	2BR00150	BOTTOM MULTI ASSY	10	⊙	5MMW222LD003	2D902580	SPRING CONTACT CLN	2
⊙	5AAVCASET282	2D900010	TRAY M/P ASSY	10	⊙	5MMW241LD024	2D908000	SPRING EARTH	7
⊙	5AAVGEAR+037	2BR70440	GEAR PICKUP	5	⊙	5MMW241SX005	2B716150	SPRING TRANS R	5
⊙	5AAVGEAR+044	2D969180	GEAR Z29S ASSY	3	⊙	5MMW251LD046	2BS04050	SPRING PULLEY	1
⊙	5AAVGEAR+045	2D969870	GEAR Z22S ASSY	3	⊙	5MMW251LD048	2BS06150	SP STOPPER BOTTOM	12
⊙	5AAVR0LL+047	2CL16090	ROLLER FEED ASSY	5	⊙	5MMW251SD002	2BR16250	SPRING LOCK R	5
⊙	5AAVR0LL+048	2CL16100	ROLLER PICKUP ASSY	5	⊙	5MMW251SX004	2D916060	SPRING TRANS	5

• Parts with "⊙" indicate the spare parts.

SP	Part.No.	Alternative.	Description	Fig.No.
	5MMW261LD039	2BS06160	SPRING SEPARATOR	10
	5MMW261LD051	2BR02340	SP LOCK COVER M/P	2
	5MMW261LJ032	2BM21060	SPRING SOL	6
	5MMW261SM001	2BS06170	SPRING LOCK M/P	10
	5MMW311LD003	2B702130	SPRING HV CONTACT	3
	5MMW341LD008	2BR16240	SPRING REGIST R	5
	5MMW341LD011	2D916250	SPRING REGIST L	5
	5MMW361SD005	2D920250	SPRING PRESS	6
	5MMW451LD001	2B700570	SPRING INTER LOCK	2
	5MMW461SD004	2BS06190	SP BOTTOM M/P R	10
	5MMW461SD006	2D916020	SP BOTTOM M/P L	10
	5MMW463LD001	2D902570	SPRING FD LOW	1
	5MMW501LD003	2D920300	SPRING PULLEY EXIT	6
	5MMW601SD001	2BR02440	SPRING MID M/P	9
	5MMW641SD001	2D916130	SPRING EARTH B	5
	5MMW641SD002	2D916270	SPRING EARTH C	5
	5MMW641SD003	2D916280	WIRE EARTH M/P	5
	5MMW682LD004	2BS06200	SPRING BOTTOM	12
	5MMW682LD005	2BS06210	SPRING BOTTOM EARTH	12
	5MMW682LD006	2BR06380	SPRING BOTTOM	12
	5MMW682LD007	2BR06390	SPRING BOTTOM EARTH	12
	5MMW803SD001	2D903060	ROD SW POWER	4
	5MMX221SW002	3FW02530	CORD KEEP	2
	5MMX422LD012	2D916140	PLATE EARTH MP	5
	5MMX431LD017	2D902410	BRACKET ROLLER PINCH	2
	5MMX543LD006	2D916110	PLATE EARTH TC	5
	5MMX543LD007	2D916210	PLATE EARTH FEED	5
	5MMX632SD006	2D902380	PLATE EARTH FUSER	2
	5MMX641RD001	2D920220	PLATE HEATER L	6
	5MMX641SD003	2D920170	PLATE PRESS L	6
	5MMX641SD004	2D920180	PLATE PRESS R	6
	5MMX641SD005	2D920190	PLATE RELEASE L	6
	5MMX641SD006	2D920200	PLATE RELEASE R	6
	5MMX653LD004	2BS06220	EARTH PLATE	12
	5MMX733SD001	2D903040	BRACKET BOX	4
	5MMX763SD003	2D922090	PLATE DRIVE FUSER	3
	5MMX876SD003	2D920050	FRAME FUSER	6
	5MMX883SD004	2BS06230	PLATE BOTTOM	12
	5MMZ242LD002	2D902330	PLATE EARTH HV B	2
⊙	5MVB661XF001	2D902530	OZONE FILTER	2
	5MVB663KB003	2D920120	COVER FUSER R	6
	5MVB732XB002	2D922020	COVER DRIVE FEED	3
	5MVB833KB004	2D920330	GUIDE ENTRANCE LOW	6
⊙	5MVB855SH001	2FP04150	COVER FRONT	1
	5MVB864SH009	2BS06250	BASE M/P	10
	5MVB866KB002	2D920320	FRAME FUSER UP	6
⊙	5MVB878SH001	2D906020	COVER M/P	10
⊙	5MVB986SH026	2D904010	COVER TOP	1
⊙	5MVG038DN002	2D916230	GEAR JOINT Z26S	5
⊙	5MVG115DB002	2BM14540	GEAR WORM	3

SP	Part.No.	Alternative.	Description	Fig.No.
⊙	5MVG122DN009	2D922140	GEAR Z14-Z20	3
⊙	5MVG126DN015	2BS16240	GEAR REGIST Z19S	5
	5MVG127DB046	2B700190	GEAR CASSETTE	12
	5MVG127DH001	2B700380	GEAR MANUAL	10
⊙	5MVG127DN076	2BS02220	GEAR ROLL FD Z18	1,2
⊙	5MVG127DN122	2D902400	GEAR FD Z15-Z18	2
⊙	5MVG133DN008	2BS02230	GEAR M/P Z27	9
⊙	5MVG137DN014	2BS02240	GEAR IDLE Z25	2
	5MVG137DN036	2BS16250	GEAR FEED IDLE Z29S	5
⊙	5MVG138DN047	2BS02260	GEAR FD Z28	2
⊙	5MVG138DN048	2BD02270	GEAR FD Z29	2
⊙	5MVG148DN060	2BS16270	GEAR REG Z22S-Z32S	5
	5MVG148DN063	2BS02280	GEAR M/P Z40	9
⊙	5MVG154BN001	2D922130	GEAR Z43S	3
⊙	5MVG154XN001	2D920020	GEAR HEAT Z43S	6
	5MVG158XN005	2D916010	GEAR MID Z42S	9
	5MVL673DH003	2D906030	GUIDE M/P L	10
	5MVL673DH004	2D906040	GUIDE M/P R	10
	5MVM111RB002	2BR20450	RUBBER PIN	6
⊙	5MVM164DN007	2BS06320	BUSH4	12
⊙	5MVM176DN019	2B716270	BUSH POM A	5
⊙	5MVM176DN034	2D922240	BUSH SHAFT CLUTCH	3
⊙	5MVM176DN035	2D922250	BUSH FRAME	2
⊙	5MVM180XN002	2D920030	BUSH FUSER	6
⊙	5MVM221DB002	2BS16290	BUSH REGIST	5
⊙	5MVM222XN001	2BS16300	BUSH FEED	5
⊙	5MVM266DN006	2BS02290	BUSH FD	1,2,6
⊙	5MVM273DB006	2BS04170	ROLLER PINCH	1,2
⊙	5MVM331DN002	2D915200	BUSH DRIVE FUSER	3
	5MVM586SH001	2B700210	DIAL CASSETTE	12
⊙	5MVS421RN004	2BS06390	SHEET FRICTION	12
⊙	5MVS421RN006	2FP06040	SHEET FRICTION	12
⊙	5MVS721KF005	2D916150	SHEET REGIST	5
	5MVT676CB003	2BS02320	SHAFT MID B	9
⊙	5MVT754SB001	2BS02330	ACTUATOR M/P A	9
⊙	5MVT774DN001	2BS06410	ROLLER FEED	12
	5MVVL171WN03	3DD06160	LABEL SIZE LGL	12
	5MVVL221GE1H	2BS06430	LABEL OPERATION	12
	5MVVL221GE1J	2BR06510	LABEL OPERATION J	12
⊙	5MVX221RB014	2BS03110	FOOT	4
	5MVX321DN014	2BS02340	BUSH MID M/P	9
	5MVX321NP001++R	2D902760	SHIELD CLAMP	4
⊙	5MVX322DB019	2BS16380	BUSH TRANSFER	5
	5MVX322DB023	2BS02350	LEVER EF	2
⊙	5MVX332DB015	2D904170	GUIDE STOCK	1
⊙	5MVX376DN001	2BS16390	HOLDER RELEASE	5
⊙	5MVX421SB021	2BS02360	ACTUATOR M/P C	9
⊙	5MVX421SL001	2D908340	LEVER DRUM L	7
⊙	5MVX422DN007	2BS02370	HOLDER FEED M/P	9
	5MVX422SD002	2BS06440	INDICATER PAPER	12

• Parts with "⊙" indicate the spare parts.

SP	Part.No.	Alternative.	Description	Fig.No.
	5MVX422SL003	2D908350	LEVER DRUM R	7
⊙	5MVX432DN005	2BS06450	LOCK BOTTOM	12
⊙	5MVX433DN002	2BS02380	CAM M/P	9
	5MVX433SH002	2BS03120	LEVER SW	4
	5MVX522DB006	2BS02390	LOCK COVER M/P	2
	5MVX522DN004	2BS02400	LEVER CAM	9
	5MVX533DN002	2BS06460	BRACKET BOTTOM	10
	5MVX543DH002	2BS06470	HOLDER DIAL	12
⊙	5MVX621SB010	2BS02410	ACTUATOR M/P B	9
	5MVX632SH005	2BS06480	GUIDE RETARD	12
	5MVX642DG001	2BS06490	LOCK LEVER SIDE	12
	5MVX642DG002	2BS06500	LOCK LEVER END	12
	5MVX642DH001	2BS16400	COVER BKT FEED	5
	5MVX644DN001	2BS06510	HOLDER RETARD	12
	5MVX662DN003	2BS02440	HOLDER CLUTCH M/P	9
⊙	5MVX663SB013	2BS16410	ACTUATOR PAPER	5
	5MVX664DN001	2BS06520	END FENCE	12
	5MVX664SH004	2BS16420	BRACKET FEED	5
⊙	5MVX731CB004	2D920150	ACTUATOR FUSER	6
⊙	5MVX732CB003	2BS04310	ACTUATOR FD	1
	5MVX733DN002	2D916090	HOOK RELEASE	5
⊙	5MVX764DN001	2BS06530	LEVER INDICATOR	12
	5MVX833CB006	2D920140	GUIDE CHANGE	6
	5MVX843CB004	2BS16470	SHAFT RELEASE	5
	5MVX852CH002	2BS04340	FRAME FD	1
	5MVX853SH003	2BS06540	COVER ROLLER	12
	5MVX865KB003	2D920080	GUIDE EXIT	6
	5MVX866CH011	2FP02130	FRAME M/P	9
	5MVX866XB003	2D904060	FRAME FD LOW	1
	5MVX872KB001	2D920130	COVER FUSER LOW	6
	5MVX876SB009	2D903050	CASE PWB POWER	4
⊙	5PLPXCJAPKX	2BR93390	PC-60LG(LTR) CASSETTE ASSY	12
⊙	5PLPXZ7APKX	2BR93360	PC-60LG(A4) CASSETTE ASSY	12
	7AAACCSG+10H002	AA047510	AC CORD ASSY (KMSG)	13
⊙	7BE686ZZ++++H01	BE010080	FUSER BELT BEARING	6
⊙	7NXEESX1235AH01	2D902860	PT.SENSOR EE-SX1235A	2
	7ZGSTGN1R033H01	ZG047920	SHIELD GASKET	4
⊙	YF0A1530	5FYFFQ15001++03	THERMOSTAT 250V150C	6

• Parts with "⊙" indicate the spare parts.

KYOCERA MITA EUROPE B.V.

Hoeksteen 40, 2132 MS Hoofddorp,
The Netherlands
Phone: +31.20.654.0000
Home page: <http://www.kyoceramita-europe.com>
Email: info@kyoceramita-europe.com

KYOCERA MITA NEDERLAND B.V.

Beechavenue 25, 1119RA Schiphol-Rijk
The Netherlands
Phone: +31.20.58.77.200

KYOCERA MITA (UK) LTD

8 Beacontree Plaza
Gillette Way Reading Berks RG2 OBS,
U.K.
Phone: +44.1189.311.500

KYOCERA MITA ITALIA S.p.A.

Via G. Verdi, 89 / 91, 20063 Cernusco s/N
Milano, Italy
Phone: +39.02.92179.1

S.A. KYOCERA MITA BELGIUM N.V.

Hermesstraat 8A, 1930 Zaventem,
Belgium
Phone: +32.2.720.9270

KYOCERA MITA FRANCE S.A.

Parc Les Algorithmes Saint Aubin
91194 GIF-SUR-YVETTE,
France
Phone: +33.1.6985.2600

KYOCERA MITA ESPAÑA S.A.

Edificio Kyocera, Avda de Manacor No. 2,
28290 Las Matas (Madrid),
Spain
Phone: +34.91.631.8392

KYOCERA MITA FINLAND OY

Kirvesmiehenkatu 4, 00880 Helsinki,
Finland
Phone: +358.9.4780.5200

KYOCERA MITA (SCHWEIZ)

Hohlstrasse 614, 8048 Zürich
Switzerland
Phone: +41.1.908.4949

KYOCERA MITA DEUTSCHLAND GMBH

Otto-Hahn-Str. 12 D-40670 Meerbusch,
Germany
Phone: +49.2159.918.0

KYOCERA MITA GMBH AUSTRIA

Eduard-Kittenberger-Gasse 95,
1230 Wien,
Austria
Phone: +43.1.86338.210

KYOCERA MITA SVENSKA AB

Esbogatan 16B 164 75 Kista,
Sweden
Phone: +46.8.546.55000

KYOCERA MITA NORGE

Postboks 150 Oppsal, NO 0619 Oslo
Olaf Helsetsvai 6, NO 0694 Oslo,
Norway
Phone: +47.22.62.73.00

KYOCERA MITA DANMARK A/S

Ejby Industrivej 1, DK-2600 Glostrup,
Denmark
Phone: +45.5687.1100

KYOCERA MITA PORTUGAL LDA.

Rua do Centro Cultural, 41 (Alvalade) 1700-106 Lisbon,
Portugal
Phone: +351.21.842.9100

KYOCERA MITA SOUTH AFRICA (PTY) LTD.

527 Kyalami Boulevard,
Kyalami Business Park Midrand,
South Africa
Phone: +27.(0)11.540.2600

KYOCERA MITA AMERICA, INC.

Headquarters:
225 Sand Road,
Fairfield, New Jersey 07004-0008,
U.S.A.
Phone: (973) 808-8444

KYOCERA MITA AUSTRALIA PTY. LTD.

Level 3, 6-10 Talavera Road, North Ryde,
N.S.W. 2113 Australia
Phone: (02) 9888-9999

KYOCERA MITA NEW ZEALAND LTD.

1-3 Parkhead Place, Albany
P.O. Box 302 125 NHPC, Auckland,
New Zealand
Phone: (09) 415-4517

KYOCERA MITA (THAILAND) CORP., LTD.

9/209 Ratchada-Prachachem Road,
Bang Sue, Bangkok 10800, Thailand
Phone: (02) 586-0320

KYOCERA MITA SINGAPORE PTE LTD.

121 Genting Lane, 3rd Level,
Singapore 349572
Phone: 67418733

KYOCERA MITA HONG KONG LIMITED

11/F., Mita Centre,
552-566, Castle Peak Road,
Tsuen Wan, New Territories,
Hong Kong
Phone: 24297422


KYOCERA MITA TAIWAN Corporation.

7F-1~2, No.41, Lane 221, Gangchi Rd.
Neihu District, Taipei, Taiwan, 114. R.O.C.
Phone: (02) 87511560

KYOCERA MITA Corporation

2-28, 1-chome, Tamatsukuri, Chuo-ku
Osaka 540-8585, Japan
Phone: (06) 6764-3555
<http://www.kyoceramita.com>

©2007 KYOCERA MITA Corporation

 **KYOCERA** is a trademark of Kyocera Corporation

Printed in Holland

WWW.SERVICE-MANUAL.NET

KYOCERA MITA AMERICA, INC.

Headquarters:

225 Sand Road,
Fairfield, New Jersey 07004-0008
TEL : (973) 808-8444
FAX : (973) 882-6000

New York Branch:

1410 Broadway 23rd floor
New York, NY 10018
TEL : (917) 286-5400
FAX : (917) 286-5402

Northeastern Region:

225 Sand Road,
Fairfield, New Jersey 07004-0008
TEL : (973) 808-8444
FAX : (973) 882-4401

Midwestern Region:

201 Hansen Court Suite 119
Wood Dale, Illinois 60191
TEL : (630) 238-9982
FAX : (630) 238-9487

Western Region:

14101 Alton Parkway,
Irvine, California 92618-7006
TEL : (949) 457-9000
FAX : (949) 457-9119

Southeastern Region:

1500 Oakbrook Drive,
Norcross, Georgia 30093
TEL : (770) 729-9786
FAX : (770) 729-9873

Southwestern Region:

2825 West Story Road,
Irving, Texas 75038-5299
TEL : (972) 550-8987
FAX : (972) 252-9786

National Operation Center & National Training Center:

2825 West Story Road,
Irving, Texas 75038-5299
TEL : (972) 659-0055
FAX : (972) 570-5816

Latin America Division:

8240 N.W. 52nd. Terrace Dawson Building,
Suite 108 Miami, Florida 33166
TEL : (305) 421-6640
FAX : (305) 421-6666

KYOCERA MITA CANADA, LTD.

6120 Kestrel Road, Mississauga,
Ontario L5T 1S8, Canada
TEL : (905) 670-4425
FAX : (905) 670-8116

KYOCERA MITA MEXICO, S.A. DE C.V.

Av. 16 de Septiembre #407
Col. Santa Inés,
Azcapotzalco México,
D.F. 02130, México
TEL : (55) 5383-2741
FAX : (55) 5383-7804

©2007 KYOCERA MITA Corporation

<http://www.kyoceramita.com>

 **KYOCERA** is a trademark of Kyocera Corporation

Printed in U.S.A.