



---

# FS-1118MFP KM-1820

## PARTS LIST

Published in March 2005  
842GM120  
2GMPL070  
Version 1.0

## NOTES

1. Indicate parts number and machine model when placing an order.

e.g.	Parts Number	Parts Name	Machine Model	Cycle	Quantity
	302DD04021	LIDTOP	FS-1118MFP/KM-1820	50/60Hz	1

2. Service calls and freight will be charged separately.

3. Symbols in the "Parts Number" column.

- Parts with "•" are component parts or sub-assemblies of the assembly appearing immediately above them.

e.g.	Parts Number	Parts Name	Parts Number	Parts Name
	5SNSA2DC++13	PARTS,MPF COVER SP	•5MVX861SH004	TRAY MPF A
			•5MVX751SH001	TRAY MPF B

- Parts with "⊙" indicates the spare parts and the parts without "⊙" can not be supplied.

## — CONTENTS —

FIG. 1	Exterior Covers .....	2
FIG. 2	Frames & Paper Feed Section I .....	4
FIG. 3	Paper Feed Section II & LSU .....	6
FIG. 4	Driving Section .....	8
FIG. 5	Process Unit.....	10
FIG. 6	Fuser Unit .....	12
FIG. 7	Cassette .....	14
FIG. 8	Optical Section .....	16
FIG. 9	Operation Unit & Original Holder .....	18
FIG. 10	Electrical Components .....	20
FIG. 11	Tools & Supplied Parts .....	22
	• INDEX .....	24

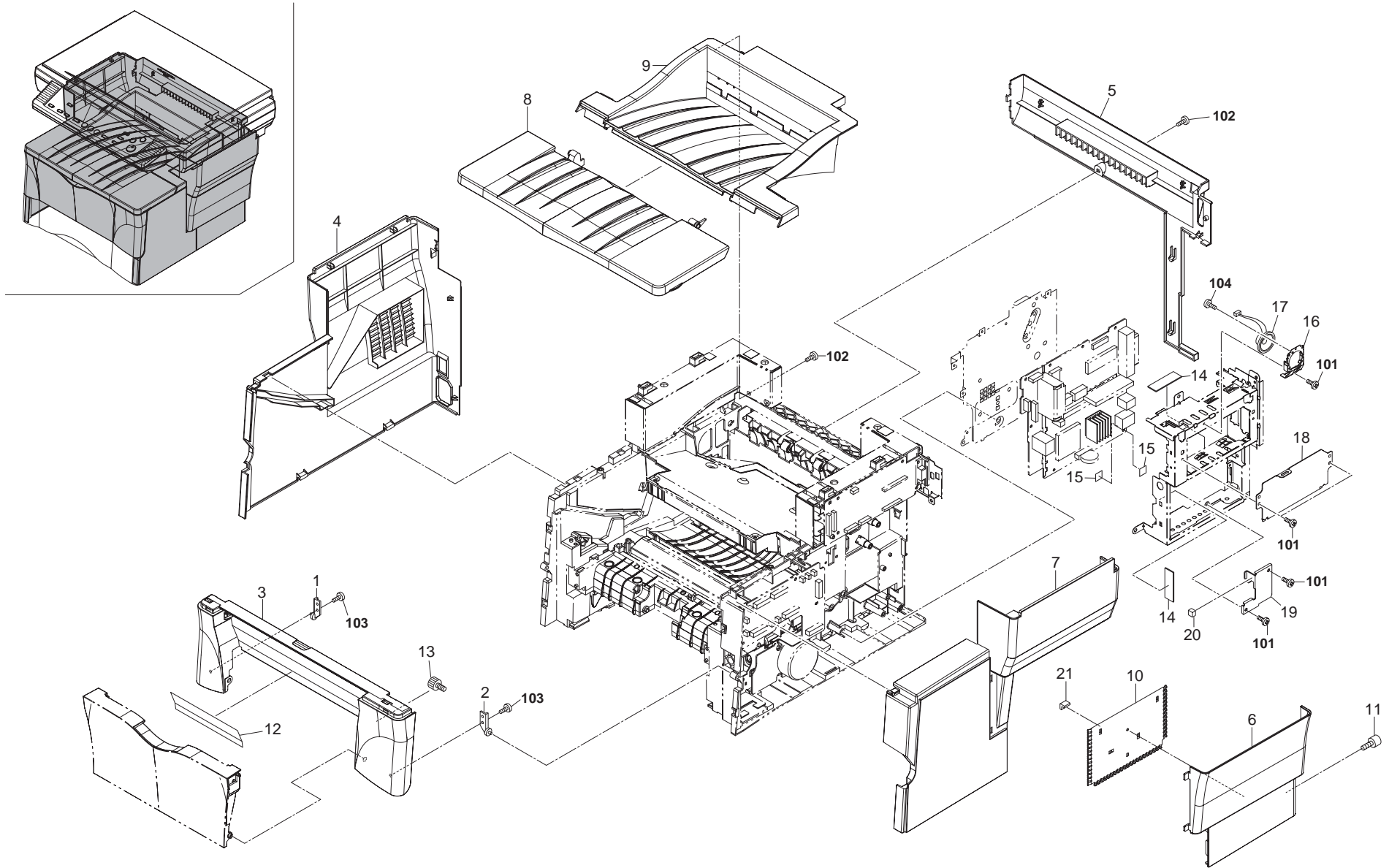


FIG. 1 Exterior Covers

2GM

SP	Ref.No.	Part.No.	Alternative.	Description	Quantity		
					120	230	240
	1	5MVX422DN005	2A804080	H NGE FRONT L	1	1	1
	2	5MVX422DN006	2A804090	H NGE FRONT R	1	1	1
⊙	3	302GM04010	2GM04010	COVER FRONT U (KM-1820)	1	1*	1*
⊙	3	302GM04020	2GM04020	COVER FRONT E (FS-1118MFP)	1	1	1
⊙	4	5SNSP0015024	2DC04020	COVER LEFT	1	1	1
	5	2DC04030		COVER REAR	1	1	1
⊙	6	5SNSP0015026	2DC04050	COVER DIMM	1	1	1
⊙	7	5SNSP0015027	2DC04060	COVER RIGHT	1	1	1
⊙	8	302DD04021	2DD04021	L D TOP	1	1	1
⊙	9	5SNSP0015030	2DC04080	COVER TOP	1	1	1
	10	2DC04090		PLATE SHIELD	1	1	1
	11	5MMT263SN012++R	2D903100	SCREW OP	1	1	1
	12	2DC05070		LABEL FRONT COVER	1	1	1
	13	302GM17010	2GM17010	RETAIN NG PIN MIRROR FRAME	1	1	1
	14	2DD27160		SHEET EMI	2	2	2
	15	2DD26100		SHEET MAIN PCB	2	2	2
	16	2DD26040		HOLDER SPEAKER	1	1	1
	17	3DB27160		SPEAKER(PBF)	1	1	1
	18	2DD26020		L D CONTROLLER L	1	1	1
	19	2DD26080		MOUNT SARCON MAIN	1	1	1
	20	2DD28120		SHEET RADIATOR C	1	1	1
	21	7ZGSTGL10015H01	ZG019360	SHIELD GASKET	1	1	1

SP	Ref.No.	Part.No.	Alternative.	Description	Quantity		
					120	230	240
	101	B1B74100		+BIND T.T SCREW(+)/ M4 X 10 CRFREE B-T			
	102	5MBTPB3006TW++R	B1A53060	+BIND TAP-TITE S SCREW M3X06			
	103	7BB300308H	BB018160	+BIND TAP-TITE B SCREW 3X8			
	104	BAB53060		+TP TAP-TITE S SCREW M3X06			

- Parts with "\*" are component parts or sub-assemblies of the assembly appearing immediately above them.
- Parts with "⊙" indicates the spare parts.

\* Service Parts for Middle and Near East(Except SaudiArabia), Asia(Except Korea,Taiwan,Philippine and China) . . 220-240V

FIG. 2 Frames & Paper Feed Section I

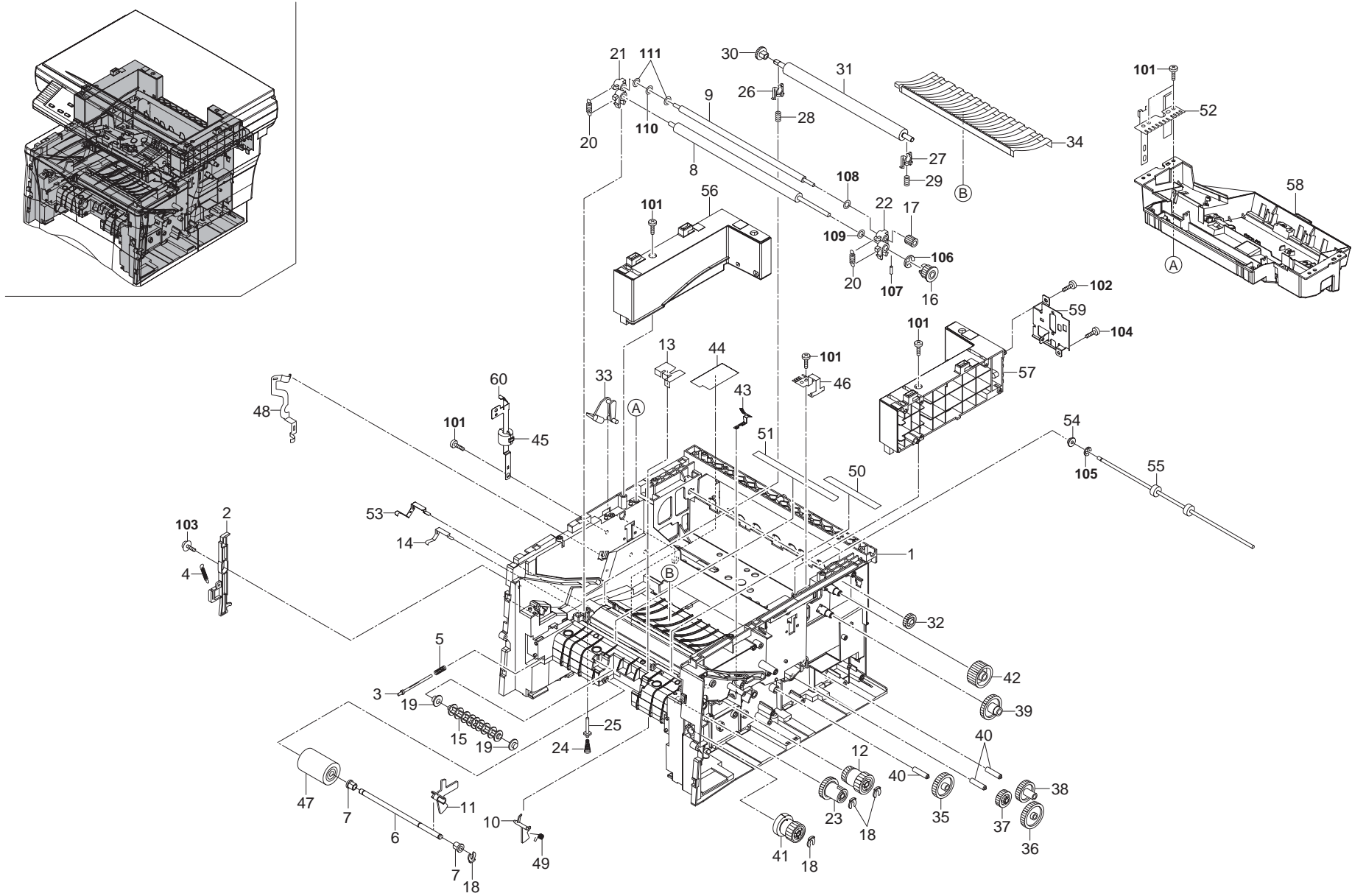


FIG. 2 Frames & Paper Feed Section I

2GM

SP	Ref.No.	Part.No.	Alternative.	Description	Quantity		
					120	230	240
	1	2DC02010		FRAME BASE (1/8)	1	1	1
	2	5MVX721DN001	2A802040	LEVER INTERLOCK	1	1	1
	3	5MVT653DW001	2A802050	PIN CASSETTE	1	1	1
	4	5MMW351LD006	2A802060	SPRING INTERLOCK	1	1	1
	5	5MMW341LD005	2A802070	SPRING PIN CASSETTE	1	1	1
	6	5MMT766SN007	2A806020	SHAFT FEED	1	1	1
	7	5MVM176DN026	2A806030	BUSH FEED	2	2	2
⊙	8	5MMT876SN073	2A806040	ROLLER REGIST LOW	1	1	1
⊙	9	5MMT865SN010	2A806050	ROLLER REGIST UP	1	1	1
⊙	10	5MVX432DB009	2A806090	ACTUATOR REGIST	1	1	1
⊙	11	5MVX542DB003	2A806100	ACTUATOR PE	1	1	1
⊙	12	5AAVCLTCH016	2A806120	CLUTCH REGIST	1	1	1
	13	5MVS441KF008	2A806170	SHEET REGIST SW	1	1	1
	14	5MMX532LD005	2A806210	CONTACT EARTH REG	1	1	1
⊙	15	5MVT676DB002	2A806220	PULLEY FEED	1	1	1
⊙	16	5MVG127DB047	2A806230	GEAR REGIST Z20	1	1	1
⊙	17	5MVG126DB025	2A806240	GEAR REGIST Z13	1	1	1
⊙	18	5MVX111DN003	2A806250	R NG STOPPER	4	4	4
	19	5MVM161DW001	2A806260	BUSH PULLEY FEED	2	2	2
	20	5MMW261LD023	2A806410	SPRING REGIST R	2	2	2
	21	5MVX221DB019	2A806420	BUSH REGIST LEFT	1	1	1
	22	5MVX221DW006	2A806430	BUSH REGIST RIGHT	1	1	1
⊙	23	5AAVCLTCH031	2FM06040	CLUTCH MPF	1	1	1
	24	5MMW361LD015	2A815010	SPRING PIN BIAS	1	1	1
	25	5MMT365SN003	2A815020	PIN CONTACT BIAS	1	1	1
⊙	26	5MVX221DB023	2A816020	BUSH TC L	1	1	1
⊙	27	5MVX221DW008	2A816030	BUSH TC R	1	1	1
	28	5MMW251LD043	2A816040	SPRING TC L	1	1	1
	29	2DC16040		SPRING TC R	1	1	1
⊙	30	5MVG127DB048	2A816060	GEAR TC Z18	1	1	1
⊙	31	2FM14070	5MMT876SN103	ROLLER TRANSFER I	1		
⊙	31	2FM14060	5MMT876SN102	ROLLER TRANSFER C		1	1
⊙	32	5MVG137DN030	2A820290	GEAR EXIT Z23 UP	1	1	1
	33	5MVX322SB020	2A820300	ACTUATOR FUSER B	1	1	1
⊙	34	5AAV3010E+31	2A868610	EARTH GU DE ASSY	1	1	1
⊙	35	5MVG148DN045	2A822080	GEAR Z38H	1	1	1
⊙	36	5MVG148DN046	2A822090	GEAR FREE Z40H	1	1	1
⊙	37	5MVG138DN041	2A822100	GEAR FREE Z25S	1	1	1
⊙	38	5MVG148DN047	2A822110	GEAR Z34S	1	1	1
⊙	39	5MVG148DN048	2A822120	GEAR Z40S	1	1	1
⊙	40	5MMT364SN003	2A822130	PIN DRIVE	3	3	3
⊙	41	2DC06010	5SNSP0015035	CLUTCH FEED	1	1	1
⊙	42	5MVG148DN049	2A822160	GEAR Z37S	1	1	1
	43	2DC16030		PLATE EARTH BRUSH A	1	1	1
	44	2DC02100		FILM PS LOW	1	1	1
	45	2A627940		CORE 10-20X10	1	1	1
	46	2DD02010		PLATE EARTH CONTROLLER	1	1	1
⊙	47	5AAVROLL+044	2A806010	ROLLER FEED ASSY	1	1	1
	48	2BY02010	5MMX632LD008	CONTACT MAIN MR	1	1	1
	49	2BY06040	5MMW261LD057	SPRING ACTUATOR REG	1	1	1

SP	Ref.No.	Part.No.	Alternative.	Description	Quantity		
					120	230	240
	50	5MVS622KF011	2BY06050	SHEET REGIST R	1	1	1
	51	5MVS622KF012	2BY06060	SHEET REGIST L	1	1	1
	52	2DD02020		PLATE EARTH SW	1	1	1
	53	2DC26100		CONTACT TRANSFER	1	1	1
	54	5MVM176DW001	2A821010	BUSH EXIT	1	1	1
⊙	55	5MMT874SN007	2A820090	ROLLER EXIT UP	1	1	1
	56	2DC02020		STAY SCANNER LEFT	1	1	1
	57	2DC02030		STAY SCANNER RIGHT	1	1	1
	58	2DC02040		FRAME MIDDLE (1/3)	1	1	1
	59	2DC02050		MOUNT SCANNER PCB	1	1	1
	60	2DC02060		PLATE EARTH STAY L	1	1	1
	101	B1B74100		+BIND T.T SCREW(+) / M4 X 10 CRFREE B-T			
	102	5MBTPB3006TW++R	B1A53060	+BIND TAP-TITE S SCREW M3X06			
	103	B4B74100		+TP T.T SCREW(+) / M4 X 10 CRFREE B-T			
	104	BAB53060		+TP TAP-TITE S SCREW M3X06			
	105	7BD103060++H01	BD018610	E STOP R NG E-3			
	106	7BD105060++H01	BD018620	E STOP R NG E-5			
	107	E0020080		SPRING PIN 2X8			
	108	C2894650		POLY SLIDER /M4.1X6.5X0.25T POLY			
	109	C2892950		POLY SLIDER /M6 2X9 5X0.5T PLASTC			
	110	C3790080		WAVE WASHER /M4X8.0X0.2T SUS			
	111	C2891100		POLY-SLIDER WASHER 4.1X10X0.3T			

- Parts with "\*" are component parts or sub-assemblies of the assembly appearing immediately above them.
- Parts with "⊙" indicates the spare parts.

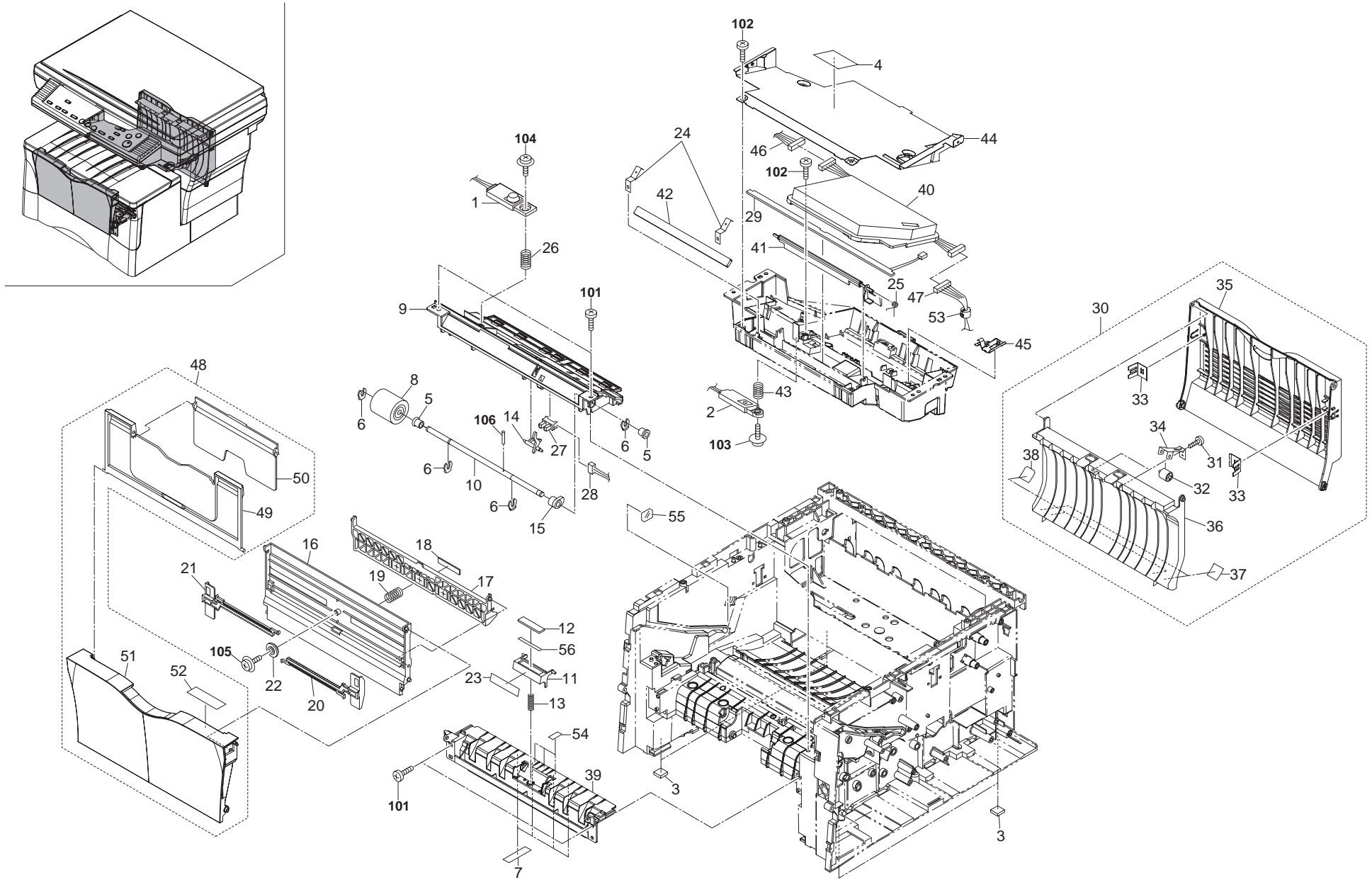




FIG. 3 Paper Feed Section II & LSU

2GM

SP	Ref.No.	Part.No.	Alternative.	Description	Quantity		
					120	230	240
⊙	1	302GM01200	2GM01200	TE SENSOR ASSY	1	1	1
⊙	2	302GM01190	2GM01190	FULL SENSOR ASSY	1	1	1
	3	5MVS228RB019	2A802500	FOOT	4	4	4
	4	5MVVL661WN34	2A805010	LABEL LASER CAUTION	1	1	1
	5	5MVM176DN026	2A806030	BUSH FEED	2	2	2
⊙	6	5MVX111DN003	2A806250	R NG STOPPER	4	4	4
	7	5MVS312KF011	2A806480	SHEET GUIDE	4	4	4
⊙	8	5AAVROLL+045	2A806510	ROLLER MPF ASSY	1	1	1
	9	5MVX854SH002	2A806520	HOLDER MP FEED	1	1	1
	10	5MMT766SN008	2A806530	SHAFT MPF	1	1	1
	11	5MVX522DB004	2A806550	SEPARATOR MPF	1	1	1
	12	5MVS416XN001	2A806560	PAD SEPARATOR MPF	1	1	1
	13	5MMW261LD038	2A806570	SPRING SEPA MPF	1	1	1
	14	5MVX432DB010	2A806600	ACTUATOR MPF	1	1	1
	15	5MVX221DN014	2A806620	CAM MPF R	1	1	1
	16	5MVB872SH019	2A806661	BASE MPF	1	1	1
	17	5MVX852CB003	2A806670	BOTTOM PLATE MPF	1	1	1
	18	5MVS616XN002	2A806680	PAD BOTTOM MPF	1	1	1
	19	2FM06030	5MMW261LD065	SPRING BOTTOM MPF	1	1	1
	20	5MVX752SH002	2A806700	GU DE MPF R	1	1	1
	21	5MVX752SH003	2A806710	GU DE MPF L	1	1	1
	22	5MVG137DN032	2A806720	GEAR MPF	1	1	1
	23	5MVS431TX001	2A806760	TAPE SEPARATOR	1	1	1
	24	5MMX221LD024	2A813030	SPRING MIRROR	2	2	2
	25	5MMW341LD006	2A813050	SPRING SHUTTER LSU	1	1	1
	26	5MMW261LD036	2A814570	SPRING TE SENSOR	1	1	1
⊙	27	5FNXGP1A73A++02	2DC27180	PT.SENSOR GP1A73AJ00	1	1	1
	28	5AACCNRM0GEA	2A827580	CONN. CORD ASSY	1	1	1
⊙	29	302GM01180	2GM01180	P.W.BOARD ASSY LED	1	1	1
⊙	30	5AAY3010E+58	2A868700	COVER REAR ASSY	1	1	1
	31	•7BB300306H	BB018140	+BIND TAP-TITE B SCREW 3X6	2	2	2
⊙	32	•5MVM273DB005	2A820100	PULLEY EXIT	2	2	2
	33	•5MMX322LD022	2A820340	PLATE TRAY	2	2	2
	34	•5MMX332LD021	2A820850	BKT PULLEY FD	2	2	2
⊙	35	•5MVB874SH018	2A820950	COVER REAR	1	1	1
	36	•5MVB874SH019	2A820961	TRAY EXIT FU	1	1	1
	37	•5MVS222KN006	2A820970	SHEET REAR	2	2	2
	38	•5MVS222KW001	2A820980	SHEET REAR B	2	2	2
	39	2DC06020		GU DE TURN A	1	1	1
⊙	40	302FM93111	2FM93111	LK-101	1	1	1
	41	2DC13020		SHUTTER LSU	1	1	1
	42	2DC13030		MIRROR LSU	1	1	1
	43	2DC13040		SPRING FULL SENSOR	1	1	1
	44	2DC26070		SHIELD LSU	1	1	1
	45	2DC26110		PLATE EARTH LSU	1	1	1
	46	2DC27070		WIRE MAIN-LSU	1	1	1
	47	2DC27140		WIRE ENGINE-LSU	1	1	1
⊙	48	5SNSA2DC++13	2DC93102	PARTS,MPF COVER SP	1	1	1
	49	•5MVX861SH004	2A806730	TRAY MPF A	1	1	1
	50	•5MVX751SH001	2A806740	TRAY MPF B	1	1	1

SP	Ref.No.	Part.No.	Alternative.	Description	Quantity		
					120	230	240
⊙	51	•5SNSP0015025	2DC04040	COVER MFP	1	1	1
	52	•2DC05090		LABEL MPF COVER	1	1	1
	53	2A627940		CORE 10-20X10	1	1	1
	54	2DC06080		SHEET MPF PAD	3	3	3
	55	2DC16050		SPACER TRANSFER	1	1	1
	56	2FM02710	5MVS422KF010	SPACER PAD	1	1	1
	101	B1B74100		+BIND T.T SCREW(+)/ M4 X 10 CRFREE B-T			
	102	B1B73100		+BIND TAP-TITE B SCREW M3X10			
	103	7BB302308H	BB018120	+TP TAP-TITE B SCREW 3X08			
	104	B4B74100		+TP T.T SCREW(+)/ M4 X 10 CRFREE B-T			
	105	7BB302305H	BB018540	+TP TAP-TITE B SCREW 3X05			
	106	E0020080		SPRING PIN 2X8			

- Parts with "\*" are component parts or sub-assemblies of the assembly appearing immediately above them.
- Parts with "⊙" indicates the spare parts.

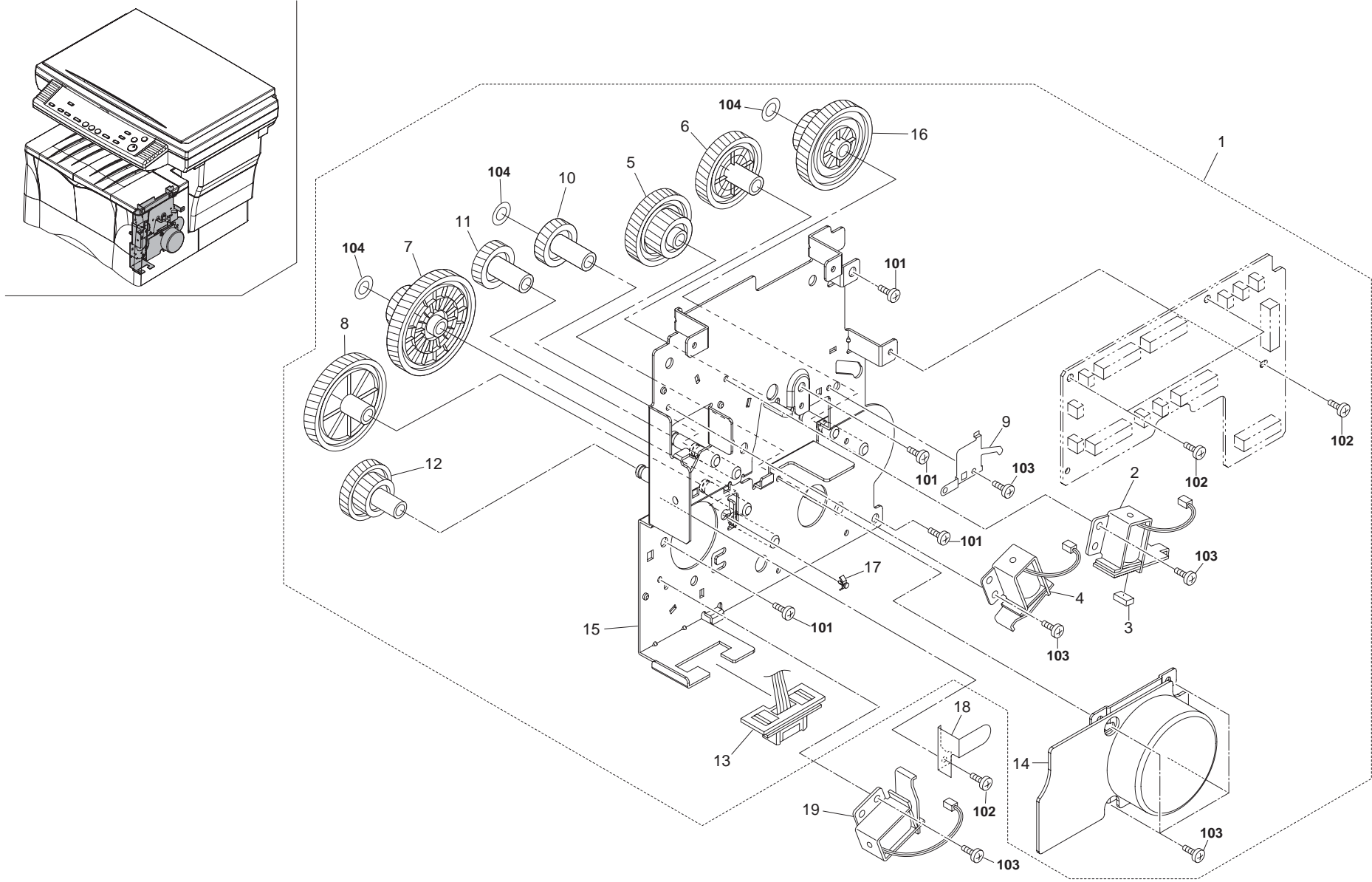


FIG. 4 Driving Section

2GM

SP	Ref.No.	Part.No.	Alternative.	Description	Quantity		
					120	230	240
⊙	1	302DC93084	2DC93084	PARTS,DRIVE UNIT SP	1	1	1
⊙	2	•302GM44020	2GM44020	SOLENOID REGIST	1	1	1
	3	•5MVS217SN002	2A806280	PAD SOLENO D	1	1	1
⊙	4	•302GM44030	2GM44030	SOLENOID MPF	1	1	1
⊙	5	•5MVG168DN017	2A822030	GEAR Z68H-Z21H	1	1	1
⊙	6	•5MVG148DN044	2A822050	GEAR Z40H	1	1	1
⊙	7	•5MVG169DN032	2A822060	GEAR Z95H-Z21H	1	1	1
⊙	8	•5MVG169DN033	2A822070	GEAR Z53H	1	1	1
	9	•5MMX521LD005	2A822150	PLATE EARTH DRUM	1	1	1
⊙	10	•5MVG138DN042	2A822170	GEAR Z24H	1	1	1
⊙	11	•5MVG137DN029	2A822180	GEAR Z21H	1	1	1
⊙	12	•5MVG148DN050	2A822190	GEAR Z36H-Z21H	1	1	1
	13	•5AACCNRM1GEA	2A827590	CONN. CORD ASSY	1	1	1
⊙	14	•302DC22011	2DC22011	MOTOR MA N	1	1	1
	15	•2DC22020		MOUNT MACHINE DRIVE	1	1	1
⊙	16	•2DC22030		GEAR 48/21	1	1	1
	17	•M2108800		SPACER,KGPS-3.5S(KITAGAWA)	1	1	1
	18	5MMX332LD013	2A806750	PLATE EARTH MPF	1	1	1
⊙	19	302GM44010	2GM44010	SOLENOID FEED	1	1	1

SP	Ref.No.	Part.No.	Alternative.	Description	Quantity		
					120	230	240
	101	B1B74100		+BIND T.T SCREW(+)/ M4 X 10 CRFREE B-T			
	102	5MBTPB3006TW++R	B1A53060	+BIND TAP-TITE S SCREW M3X06			
	103	7BB100305H	BB018180	+BIND TAP-TITE S SCREW 3X05			

- Parts with "•" are component parts or sub-assemblies of the assembly appearing immediately above them.
- Parts with "⊙" indicates the spare parts.

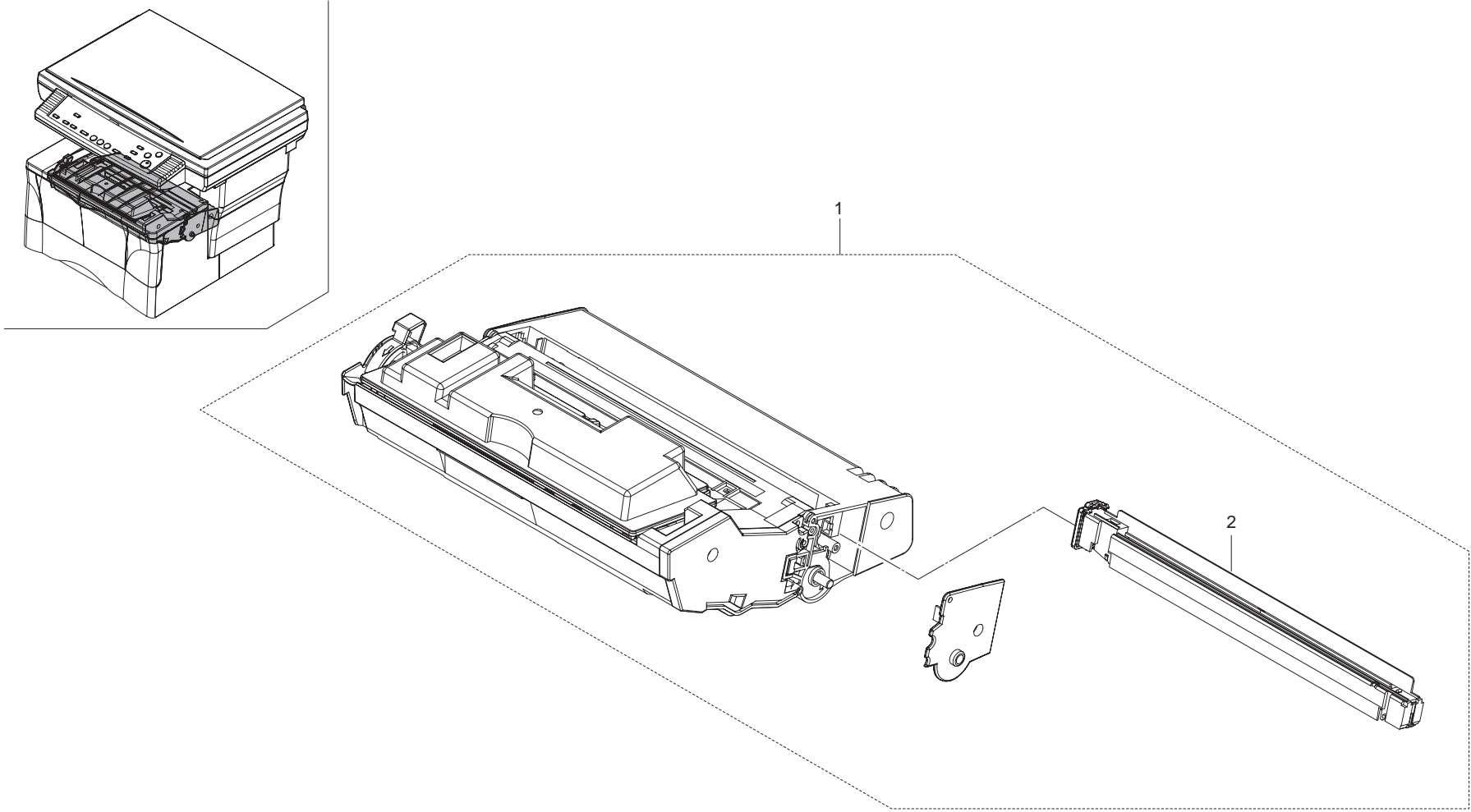


FIG. 5 Process Unit

2GM

SP	Ref No.	Part.No.	Alternative.	Description	Quantity		
					120	230	240
⊙	1	2FM93093		PU-102 PROCESS UNIT	1	1	1
⊙	2	*5PLPWCTAPKX	2FM93120	MC-41 MCH ASSY	1	1	1

- Parts with "\*" are component parts or sub-assemblies of the assembly appearing immediately above them.
- Parts with "⊙" indicates the spare parts.

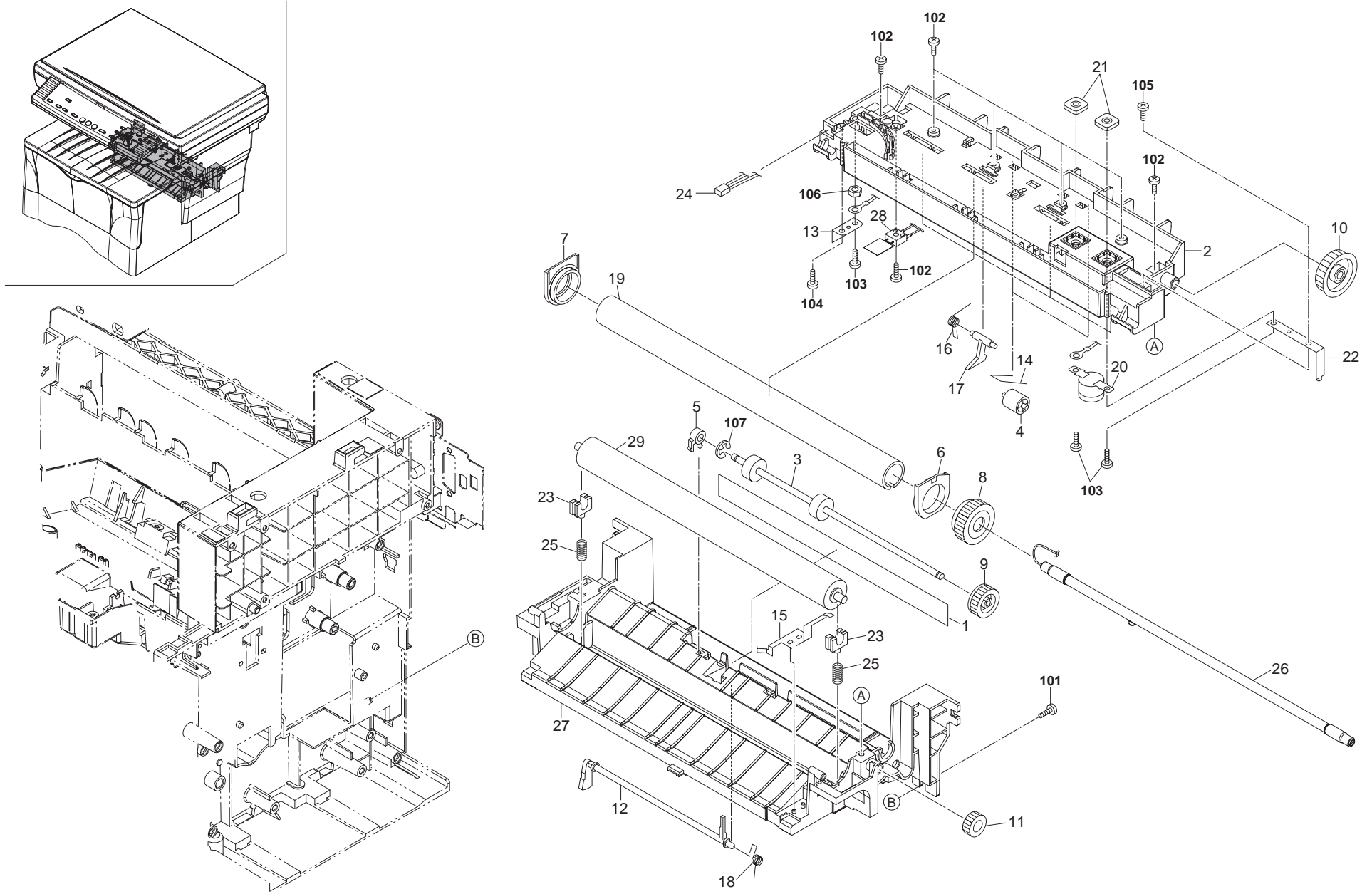


FIG. 6 Fuser Unit

2GM

SP	Ref.No.	Part.No.	Alternative.	Description	Quantity		
					120	230	240
⊙		302DC93052	2DC93052	FK-100 FUSER UNIT (E) SP		1	1
⊙		302DC93062	2DC93062	FK-100 FUSER UNIT (U) SP	1		
	1	•5MVL731WN14	2A805020	LABEL FUSER CAUTION	1	1	1
	2	•5MVB863KB003	2A820023	FRAME FUSER UP	1	1	1
⊙	3	•5MMT774SN001	2A820080	ROLLER EXIT LOW	1	1	1
⊙	4	•5MVM273DB005	2A820100	PULLEY EXIT	2	2	2
	5	•5MVX211DB016	2A820110	BUSH EXIT	1	1	1
	6	•5MVM188XN015	2A820120	BUSH HEAT R	1	1	1
	7	•5MVM188XN016	2A820131	BUSH HEAT L	1	1	1
⊙	8	•302A820161	2A820161	GEAR HEAT Z33	1	1	1
⊙	9	•5MVG137DN031	2A820170	GEAR EXIT Z23	1	1	1
⊙	10	•5MVG148XN009	2A820180	GEAR DLE Z34	1	1	1
⊙	11	•5MVG127DN070	2A820190	GEAR DLE Z18	1	1	1
	12	•5MVX731CB002	2A820200	ACTUATOR FUSER A	1	1	1
	13	•5MML211RD002	2A820220	HOLDER LAMP B	1	1	1
	14	•5MMW601LD011	2A820260	SPRING PULLEY	2	2	2
	15	•5MMX665LD004	2A820280	PLATE EARTH FUSER	1	1	1
	16	•5MMW261LD055	2A820350	SPRING SEPARATOR	4	4	4
	17	•5AAVSEPR015	2A820360	SEPARATOR ASSY	4	4	4
	18	•5MMW261LD017	2A820520	SPRING ACTUATOR	1	1	1
⊙	19	•5MMT876AX002	2BY20010	ROLLER HEAT	1	1	1
⊙	20	•5EYFFQ16001++01	2BY20020	THERMOSTAT 250V/160 C	1	1	1
	21	•5MMS111SL002	2BY20050	NUT FUSER A	2	2	2
	22	•2BY20060	5MML531CG001	HOLDER LAMP A	1	1	1
	23	•2BY20070	5MVX221XN004	BUSH PRESS	2	2	2
	24	•2BY27560	5AACCNSH3GEA	CONN. CORD ASSY	1	1	1
	24	•2BY27570	5AACCNSH4GEA	CONN. CORD ASSY	1		
	25	•2DC20010		SPRING PRESS ROLLER	2	2	2
⊙	26	•302DC20021	2DC20021	HEATER 230 FIXING	1	1	1
⊙	26	•302DC20031	2DC20031	HEATER 120 FIXING	1		
	27	•2DC20040		FRAME FUSER LOW (1/2)	1	1	1
⊙	28	•2DC20050	5SNSP0015041	THERMISTOR FUSER	1	1	1
	29	•2DC20060		ROLLER PRESS	1	1	1

SP	Ref.No.	Part.No.	Alternative.	Description	Quantity		
					120	230	240
	101	B1B74100		+BIND T.T SCREW(+)/ M4 X 10 CRFREE B-T			
	102	7BB300312H	BB018170	+BIND TAP-TITE B SCREW 3X12			
	103	5MBSP43006NW++R	B4A03060	+TP-A SCREW M3X06(TRIVALENT CHROMATING)			
	104	7BB300308H	BB018160	+BIND TAP-TITE B SCREW 3X8			
	105	7BB300306H	BB018140	+BIND TAP-TITE B SCREW 3X6			
	106	7BC1003055++H01	BC018230	HEXA NUT M3			
	107	7BD103060++H01	BD018610	E STOP R NG E-3			

- Parts with "•" are component parts or sub-assemblies of the assembly appearing immediately above them.
- ⊙ Parts with "⊙" indicates the spare parts.

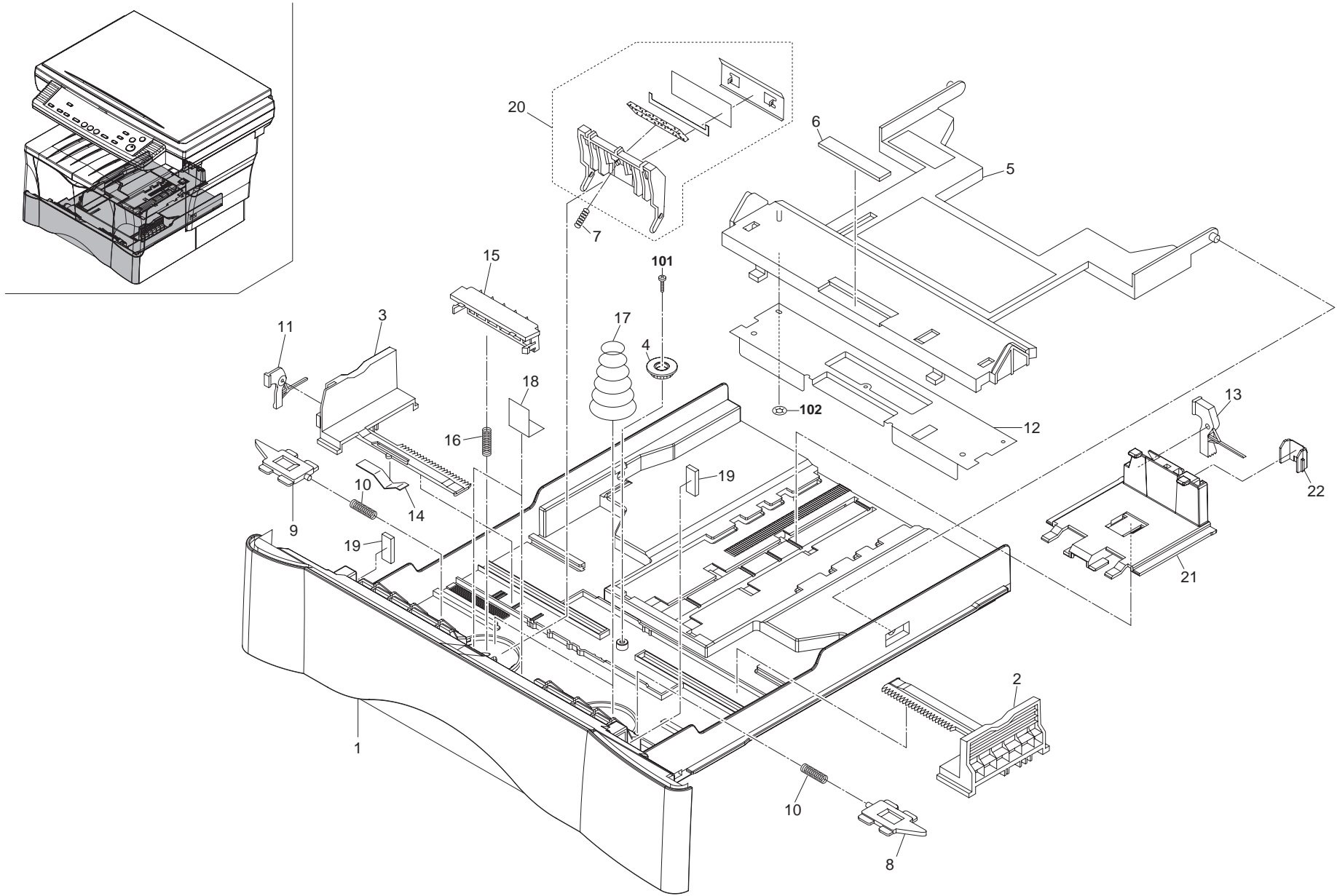




FIG. 7 Cassette

2GM

SP	Ref.No.	Part.No.	Alternative.	Description	Quantity		
					120	230	240
⊙		2FM93101	5PLPXYNAPKX	CT-101(LTR) CASSETTE ASSY	1		
⊙		2FM93081	5PLPXYKAPKX	CT-101(A4) CASSETTE ASSY		1	1
	1	*5MVB886SH063	2A807010	BASE CASSETTE	1	1	1
	2	*2FM06020	5MVX765SH005	GU DE SIDE R	1	1	1
	3	*2FM06010	5MVX765SH004	GU DE SIDE L	1	1	1
⊙	4	*5MVG127DN071	2A807050	GEAR CASSETTE	1	1	1
	5	*5MVX882SH002	2A807060	BOTTOM CASSETTE	1	1	1
	6	*5MVS616XN001	2A807080	PAD BOTTOM	1	1	1
	7	*5MMW251LD047	2A807110	SPRING SEPARATOR C	1	1	1
	8	*5MVX431DW001	2A807121	LOCK CASSETTE R	1	1	1
	9	*5MVX431DW002	2A807131	LOCK CASSETTE L	1	1	1
	10	*5MMW251LD045	2A807140	SPRING LOCK	2	2	2
	11	*5MVX541DG003	2A807161	LEVER S DE	1	1	1
	12	*5MMS856SL001	2A807170	PLATE BOTTOM	1	1	1
	13	*5MVX541DG002	2A807191	LEVER REAR	1	1	1
	14	*5MMP141LD002	2A807510	PLATE SIDE GUIDE	1	1	1
	15	*5MMP141LD003	2A807520	PLATE STOPPER	1	1	1
⊙	16	*5MMW171LD006	2A807530	SPRING STOPPER	1	1	1
	17	*5MMW552LD002	2A807540	SPRING CASSETTE	2	2	2
	18	*5MVL311KF003	2A807550	SHEET CASSETTE	2	2	2
	19	*5MVS315CN001	2A807910	SPACER CASSETTE	2	2	2
⊙	20	*2FM68320		SEPARATOR PAPER ASSY	1	1	1
⊙	21	*2DC07010		STOPPER PAPER	1	1	1
⊙	22	*2DC07020		POSITIONING FOLIO PAPER	1	1	1

SP	Ref.No.	Part.No.	Alternative.	Description	Quantity		
					120	230	240
	101	7BB302306H	BB018460	+TP TAP-TITE B SCREW M3X6(CRFREE)			
	102	D4000400		STOP R NG CSTW-4			

- Parts with "\*" are component parts or sub-assemblies of the assembly appearing immediately above them.
- Parts with "⊙" indicates the spare parts.

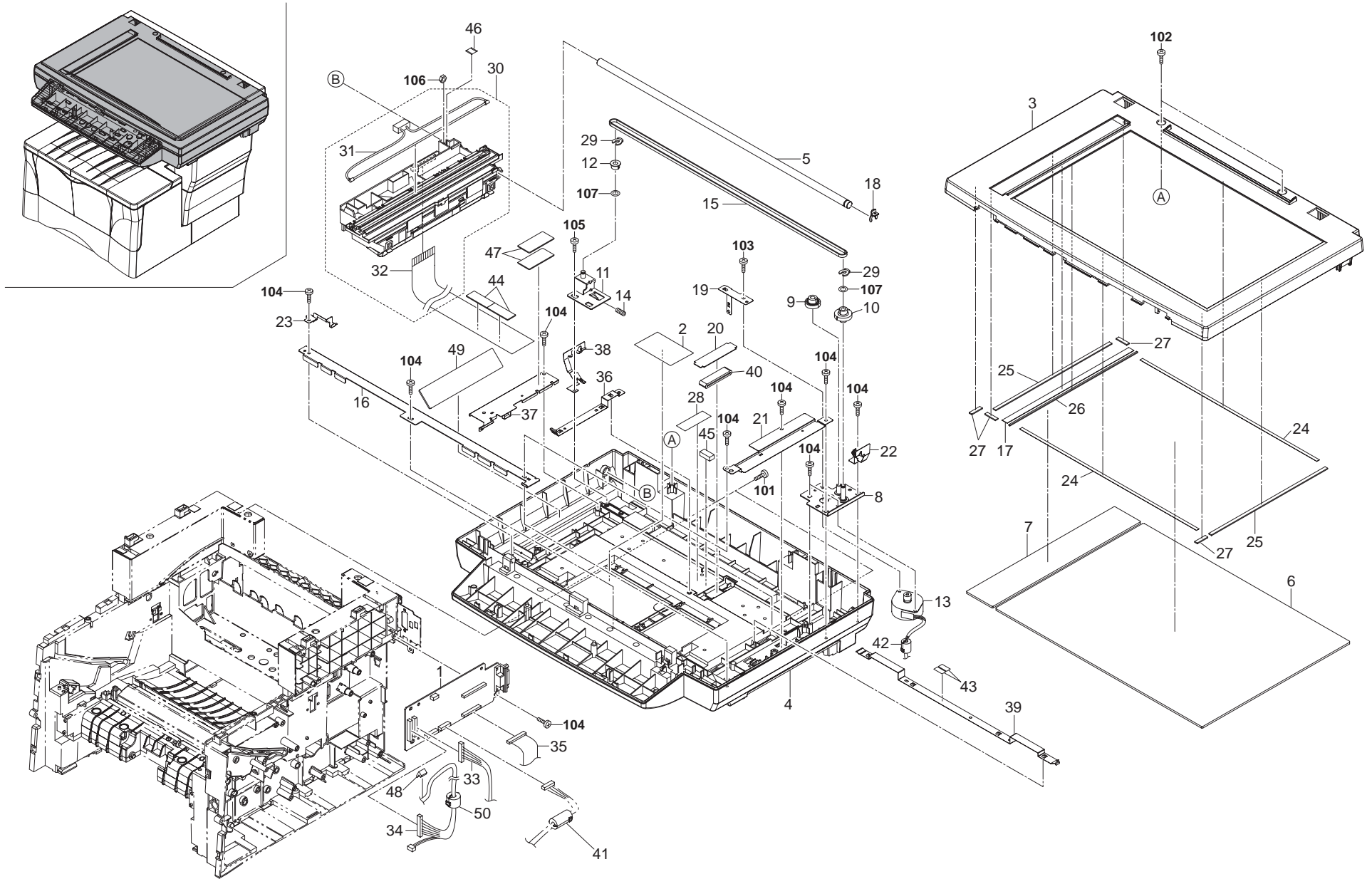


FIG. 8 Optical Section

2GM

SP	Ref.No.	Part.No.	Alternative.	Description	Quantity			SP	Ref.No.	Part.No.	Alternative.	Description	Quantity			
					120	230	240						120	230	240	
⊙	1	302GM01140	2GM01140	P.W.BOARD ASSY SCANNER	1	1	1									
	2	2DC05010		LABEL CONTACT GLASS	1	1	1		101	B1B74100		+BIND T.T SCREW(+)/ M4 X 10 CRFREE B-T				
	3	2DC12010		UPPER FRAME SCANNER(1/2)	1	1	1		102	B1B73100		+BIND TAP-TITE B SCREW M3X10				
	4	2DC12020		LOWER FRAME SCANNER(1/4)	1	1	1		103	5MBSP43006NW++R	B4A03060	+TP-A SCREW M3X06(TRIVALENT CHROMATING)				
	5	2DC12040		SHAFT SCANNER	1	1	1		104	7BB300308H	BB018160	+BIND TAP-TITE B SCREW 3X8				
⊙	6	2DC12050		CONTACT GLASS	1	1	1		105	7BB302308H	BB018120	+TP TAP-TITE B SCREW 3X08				
⊙	7	2DC12060		CONTACT GLASS DF	1	1	1		106	7BC1004070++H01	BC018240	HEXA NUT M4				
	8	2DC12110		MOUNT SCANNER MOTOR	1	1	1		107	C2806130		POLY SLIDER M6 2X 13X.25T PA				
⊙	9	2DC12120		GEAR SCANNER 39/22	1	1	1									
⊙	10	2DC12130		GEAR SCANNER 45/18	1	1	1									
	11	2DC12140		MOUNT TENSION PULLEY	1	1	1									
⊙	12	2DC12150		PULLEY TENSION	1	1	1									
⊙	13	5SNSP0015031	2DC12160	MOTOR SCANNER	1	1	1									
	14	2DC12170		SPRING TENSION	1	1	1									
⊙	15	2DC12180		BELT SCANNER	1	1	1									
	16	2DC12190		RAIL SCANNER	1	1	1									
	17	2DC12210		STANDARD PLATE SHAD NG	1	1	1									
⊙	18	2DC12280		STOPPER 8	1	1	1									
	19	2DC12300		GROUND PLATE SCANNER	1	1	1									
	20	2DC12310		HOLDER FFC	1	1	1									
	21	2DC12330		PLATE EARTH SCANNER A	1	1	1									
	22	2DC12340		PLATE EARTH SCANNER B	1	1	1									
	23	2DC12350		PLATE EARTH SCANNER C	1	1	1									
	24	2DC12360		TAPE CONTACT GLASS A	2	2	2									
	25	2DC12370		TAPE CONTACT GLASS B	2	2	2									
	26	2DC12380		TAPE CONTACT GLASS C	1	1	1									
	27	2DC12390		TAPE CONTACT GLASS D	4	4	4									
	28	2DC12400		TAPE FFC	2	2	2									
⊙	29	5MVX111DN003	2A806250	R NG STOPPER	2	2	2									
⊙	30	302DD93011	2DD93011	PARTS, IMAGE SCANNER, SP	1	1	1									
⊙	31	*2DC12200		LAMP SCANNER	1	1	1									
	32	*2DD27091		CONN.CORD ASSY SCN-CCD	1	1	1									
	33	2DD27040		CONN.CORD ASSY SCN-MAIN1	1	1	1									
	34	2DD27050		CONN.CORD ASSY SCN-PANEL	1	1	1									
	35	2DC27080		CONN.CORD ASSY SCANNER-MAIN2	1	1	1									
	36	2DC12420		PLATE EARTH SCANNER D	1	1	1									
	37	2DC12430		PLATE EARTH SCANNER E	1	1	1									
	38	2DC12440		PLATE EARTH SCANNER F	1	1	1									
	39	2DC12450		PLATE EARTH SCANNER G	1	1	1									
	40	2DC27150		CORE FFC1	1	1	1									
	41	2BL27650		CORE 6-18X34	1	1	1									
	42	33927590		CORE 7-15X18	1	1	1									
	43	2DC12460		SEAL EARTH PLATE	2	2	2									
	44	2DD27160		SHEET EMI	2	2	2									
	45	2DD27110		GASKET SHIELD 3X4X10	1	1	1									
	46	2DC12480		L D ISU	1	1	1									
	47	7ZGSTG335050H01	ZG020550	SHIELD GASKET	2	2	2									
	48	7ZGSTGL10015H01	ZG019360	SHIELD GASKET												
	49	7ZGSTG221135H01	ZG020870	SHIELD GASKET												
	50	2A627940		CORE 10-20X10												

- Parts with "\*" are component parts or sub-assemblies of the assembly appearing immediately above them.
- Parts with "⊙" indicates the spare parts.

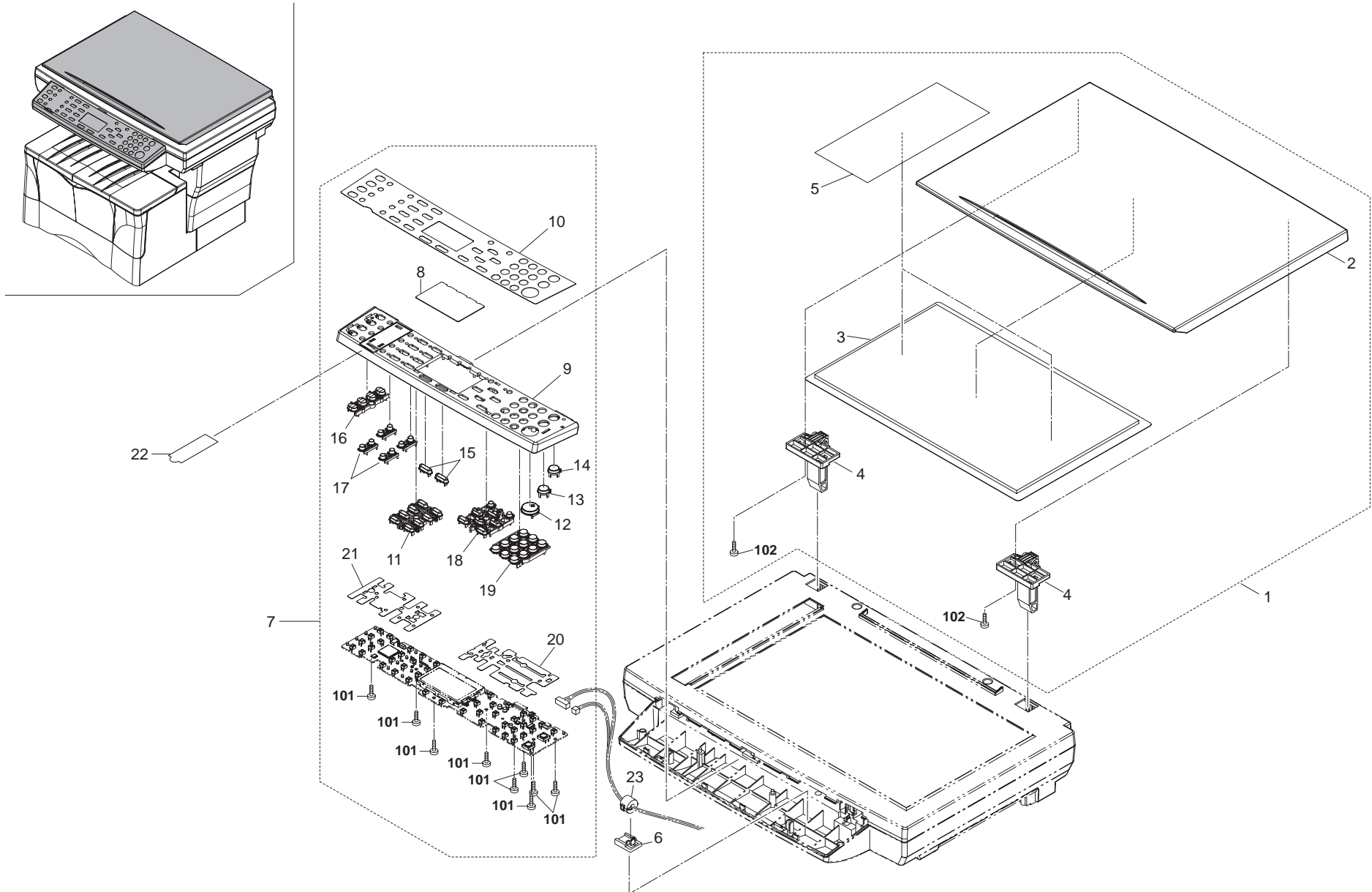


FIG. 9 Operation Unit & Original Holder

2GM

SP	Ref.No.	Part.No.	Alternative.	Description	Quantity		
					120	230	240
⊙	1	302DC93112	2DC93112	PARTS,PLATEN COVER SP	1	1	1
⊙	2	•2DC11010		COVER ORIGINAL HOLDER(1/2)	1	1	1
⊙	3	•2DC11020		MAT ORIGINAL HOLDER	1	1	1
⊙	5	•2DC11050		TAPE ORIGINAL HOLDER	2	2	2
	6	2DD27100		BINDING CORE	1	1	1
⊙	7	302GM93010	2GM93010	PARTS,OPE PANEL (E),SP	1	1	1
	8	•2DD25150		BARR ER LCD	1	1	1
⊙	9	•2DD25010		COVER OPERATION(1/2)	1	1	1
⊙	10	•302GM05010	2GM05010	SHEET OPERATION E	1	1	1
	11	•2DD25040		KEY FUNCTION	1	1	1
⊙	12	•2DC25052		KEY PRINT	1	1	1
⊙	13	•2DC25060		KEY STOP	1	1	1
⊙	14	•2DC25070		KEY RESET	1	1	1
	15	•2DD25050		KEY DECISION	2	2	2
	16	•2DD25060		KEY STATUS	1	1	1
	17	•2DD25070		KEY ONE TOUCH	4	4	4
	18	•2DD25080		KEY CONTROL	1	1	1
	19	•302GM05030	2GM05030	KEY OPERATION 10	1	1	1
	20	•302DD25131	2DD25131	RIGHT DUST SHIELD	1	1	1
	21	•2DD25140		LEFT DUST SHIELD	1	1	1
	22	2DD25190		SHEET ONE TOUCH	1	1	1
	23	3HK27050		CORE 8-16X10	1	1	1
	4	303HK03012		HINGE DP-100 LEFT			
	4	303HK03022		HINGE DP-100 RIGHT			

SP	Ref.No.	Part.No.	Alternative.	Description	Quantity		
					120	230	240
	101	7BB300308H	BB018160	+BIND TAP-TITE B SCREW 3X8			
	102	7BB302310H	BB018150	+TP TAP-TITE B SCREW 3X10			

- Parts with "•" are component parts or sub-assemblies of the assembly appearing immediately above them.
- Parts with "⊙" indicates the spare parts.

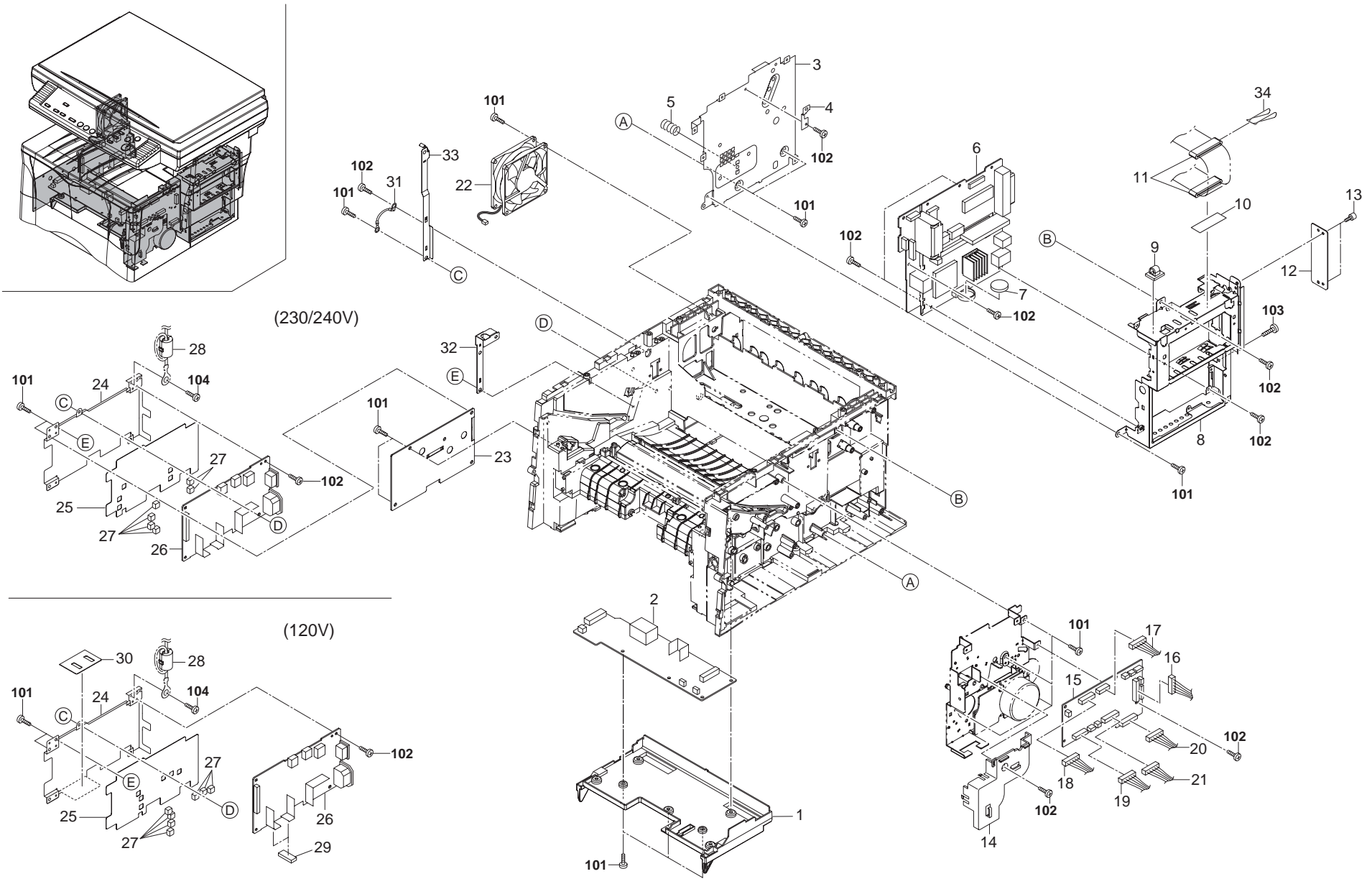


FIG. 10 Electrical Components

2GM

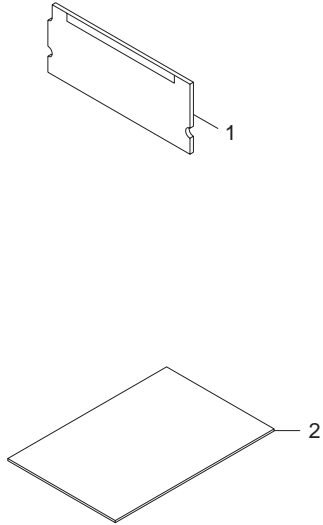
SP	Ref.No.	Part.No.	Alternative.	Description	Quantity		
					120	230	240
	1	5MVB874CH002	2A802030	COVER PWB	1	1	1
⊙	2	302GM01150	2GM01150	P.W.BOARD ASSY BIAS	1	1	1
	3	5MMS775SL001	2A827010	PLATE CONTROLLER	1	1	1
	4	2DD02030		PLATE EARTH SHIELD	1	1	1
⊙	5	5MMW271LD010	2A822140	SPRING FREE	1	1	1
⊙	6	302GM01310	2GM01310	P.W.B ASSY MA N EU(SP)		1	
⊙	6	302GM01380	2GM01380	P.W.B ASSY MA N KMAUS(SP)			1
⊙	6	302GM01330	2GM01330	P.W.B ASSY MA N US(SP)	1		
⊙	6	302GM01350	2GM01350	P.W.B ASSY MA N KMSG(SP)		1*	1*
	7	5FZBL003040++02	Y87H5010	BATTERY CR2032	1	1	1
	8	2DD26010		SHIELD CONTROLLER (1/3)	1	1	1
	9	M2105970		CLAMP,CKN-10(KITAGAWA)	1	1	1
	10	2DC26120		TAPE FFC M/S	1	1	1
	11	2DC27160		CORE FFC2	2	2	2
	12	2DD26070		PLATE OPTION	1	1	1
	13	5MMT263SN012++R	2D903100	SCREW OP	2	2	2
	14	5MVB663SB048	2A822200	COVER CORD	1	1	1
⊙	15	302GM01410	2GM01410	P.W.B ASSY ENG NE(SP)	1	1	1
	16	2DC27010		CONN.CORD ASSY ENGINE-MAIN	1	1	1
	17	2DC27020		CONN.CORD ASSY ENGINE-SCANNER1	1	1	1
	18	2DC27030		CONN.CORD ASSY ENGINE-SCANNER2	1	1	1
	19	2DC27110		CONN.CORD ASSY ENGINE-MMOT	1	1	1
	20	2DD27020		CONN.CORD ASSY ENG-BIASH	1	1	1
	21	2DD27030		CONN.CORD ASSY ENG-BIASY	1	1	1
⊙	22	2DC23010	5SNSP0015038	FAN COOLING	1	1	1
⊙	23	302DD28071	2DD28071	TRANS ASSY	1	1	1
	24	5MMX773SL001	2A827030	PLATE SW REG		1	1
	24	2DD26090		PLATE SW REG	1		
	25	2DD28140		SHEET SW REG E		1	1
	25	2DD28150		SHEET SW REG J	1		
⊙	26	302DD28041	2DD28041	P.W.BOARD ASSY MFPPS200		1	1
⊙	26	302DD28031	2DD28031	P.W.BOARD ASSY MFPPS100	1		
	27	2DD28120		SHEET RADIATOR C	7	6	6
	28	2BL27650		CORE 6-18X34	1	1	1
	29	2DD28100		SHEET RADIATOR A	2		
	30	2DD28160		SHEET SW REG J SUB	1		
	31	2DD27170		CONN.CORD ASSY EARTH FAX	1	1	1
	32	2DC26080		GROUND PLATE SR	1	1	1
	33	2DC02090		PLATE EARTH STAY L2	1	1	1
	34	7YZM390008++H01	YZ019370	ACCESS.CLAMP	1	1	1

SP	Ref.No.	Part.No.	Alternative.	Description	Quantity		
					120	230	240
	101	B1B74100		+BIND T.T SCREW(+)/ M4 X 10 CRFREE B-T			
	102	5MBTPB3006TW++R	B1A53060	+BIND TAP-TITE S SCREW M3X06			
	103	5MBSP3006NW++R	B0B03060	PAN HEAD SCREW(+)/ M3 X 6 CRFREE			
	104	5MBTPB4006TW++R	B1A54060	+BIND TAP-TITE S SCREW M4X06			

- Parts with "\*" are component parts or sub-assemblies of the assembly appearing immediately above them.
- Parts with "⊙" indicates the spare parts.

\* Service Parts for Middle and Near East(Except Saudi Arabia), Asia(Except Korea,Taiwan,Philippine and China) . . 220-240V

Tools



Supplied Parts

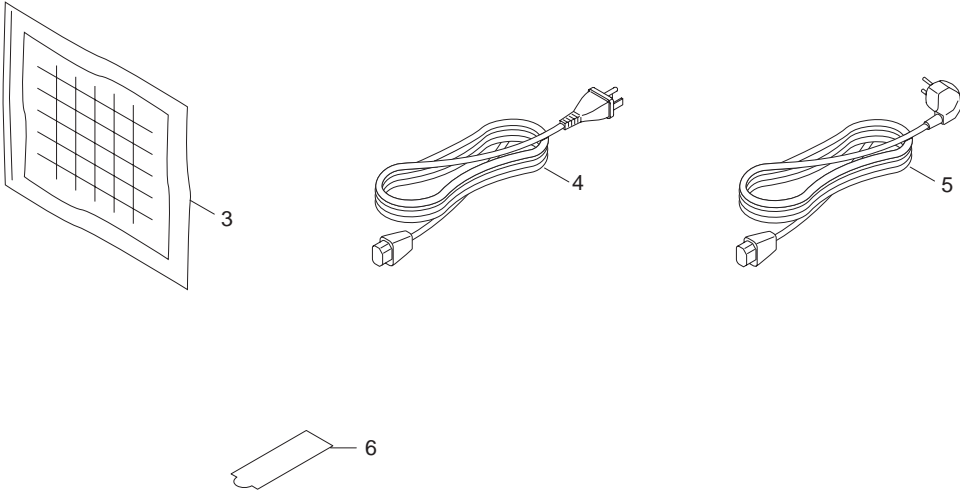




FIG. 11 Tools & Supplied Parts

SP	Ref No.	Part.No.	Alternative.	Description	Quantity		
					120	230	240
⊙	1	302GM01210	2GM01210	P.W.BOARD ASSY DIMM	1	1	1
⊙	2	2A668011		SPECIAL TOOL,SCANNER ADJUSTMENT ORIGINAL	1	1	1
	3	5AAMDK5P++01	4AK85040	CLEANING KIT C	1	1	1
	4	2DC27410		AC CORD 120 ASSY	1		
	5	302DD27180	2DD27180	AC CORD 230 ASSY		1	1
	6	2DD25190		SHEET ONE TOUCH	4	4	4

- Parts with "\*" are component parts or sub-assemblies of the assembly appearing immediately above them.
- Parts with "⊙" indicates the spare parts.

INDEX

2GM

SP	Part.No.	Alternative.	Description	Fig.No.	SP	Part.No.	Alternative.	Description	Fig.No.
	33927590		CORE 7-15X18	8		2DC12330		PLATE EARTH SCANNER A	8
	2A627940		CORE 10-20X10	2,3,8		2DC12340		PLATE EARTH SCANNER B	8
⊙	2A668011		SPECIAL TOOL,SCANNER ADJUSTMENT ORIGINAL	11		2DC12350		PLATE EARTH SCANNER C	8
	2BL27650		CORE 6-18X34	8,10		2DC12360		TAPE CONTACT GLASS A	8
	2BY02010	5MMX632LD008	CONTACT MA N MR	2		2DC12370		TAPE CONTACT GLASS B	8
	2BY06040	5MMW261LD057	SPR NG ACTUATOR REG	2		2DC12380		TAPE CONTACT GLASS C	8
	2BY20060	5MML531CG001	HOLDER LAMP A	6		2DC12390		TAPE CONTACT GLASS D	8
	2BY20070	5MVX221XN004	BUSH PRESS	6		2DC12400		TAPE FFC	8
	2BY27560	5AACNSH3GEA	CONN. CORD ASSY	6		2DC12420		PLATE EARTH SCANNER D	8
	2BY27570	5AACNSH4GEA	CONN. CORD ASSY	6		2DC12430		PLATE EARTH SCANNER E	8
	2DC02010		FRAME BASE (1/8)	2		2DC12440		PLATE EARTH SCANNER F	8
	2DC02020		STAY SCANNER LEFT	2		2DC12450		PLATE EARTH SCANNER G	8
	2DC02030		STAY SCANNER RIGHT	2		2DC12460		SEAL EARTH PLATE	8
	2DC02040		FRAME M DDLE (1/3)	2		2DC12480		LID ISU	8
	2DC02050		MOUNT SCANNER PCB	2		2DC13020		SHUTTER LSU	3
	2DC02060		PLATE EARTH STAY L	2		2DC13030		MIRROR LSU	3
	2DC02090		PLATE EARTH STAY L2	10		2DC13040		SPRING FULL SENSOR	3
	2DC02100		F LM PS LOW	2		2DC16030		PLATE EARTH BRUSH A	2
	2DC04030		COVER REAR	1		2DC16040		SPRING TC R	2
	2DC04090		PLATE SH ELD	1		2DC16050		SPACER TRANSFER	3
	2DC05010		LABEL CONTACT GLASS	8		2DC20010		SPRING PRESS ROLLER	6
	2DC05070		LABEL FRONT COVER	1		2DC20040		FRAME FUSER LOW (1/2)	6
	2DC05090		LABEL MPF COVER	3	⊙	2DC20050	5SNSP0015041	THERMISTOR FUSER	6
⊙	2DC06010	5SNSP0015035	CLUTCH FEED	2		2DC20060		ROLLER PRESS	6
	2DC06020		GUIDE TURN A	3		2DC22020		MOUNT MACHINE DRIVE	4
	2DC06080		SHEET MPF PAD	3	⊙	2DC22030		GEAR 48/21	4
⊙	2DC07010		STOPPER PAPER	7	⊙	2DC23010	5SNSP0015038	FAN COOL NG	10
⊙	2DC07020		POSITION NG FOLIO PAPER	7	⊙	2DC25052		KEY PRINT	9
⊙	2DC11010		COVER ORIGINAL HOLDER(1/2)	9	⊙	2DC25060		KEY STOP	9
⊙	2DC11020		MAT ORIGINAL HOLDER	9	⊙	2DC25070		KEY RESET	9
	2DC11050		TAPE ORIGINAL HOLDER	9		2DC26070		SH ELD LSU	3
⊙	2DC11060		HINGE ORIGINAL COVER	9		2DC26080		GROUND PLATE SR	10
	2DC12010		UPPER FRAME SCANNER(1/2)	8		2DC26100		CONTACT TRANSFER	2
	2DC12020		LOWER FRAME SCANNER(1/4)	8		2DC26110		PLATE EARTH LSU	3
⊙	2DC12040		SHAFT SCANNER	8		2DC26120		TAPE FFC M/S	10
⊙	2DC12050		CONTACT GLASS	8		2DC27010		CONN.CORD ASSY ENG NE-MA N	10
⊙	2DC12060		CONTACT GLASS DF	8		2DC27020		CONN.CORD ASSY ENG NE-SCANNER1	10
	2DC12110		MOUNT SCANNER MOTOR	8		2DC27030		CONN.CORD ASSY ENG NE-SCANNER2	10
⊙	2DC12120		GEAR SCANNER 39/22	8		2DC27070		WIRE MA N-LSU	3
⊙	2DC12130		GEAR SCANNER 45/18	8		2DC27080		CONN.CORD ASSY SCANNER-MAIN2	8
	2DC12140		MOUNT TENSION PULLEY	8		2DC27110		CONN.CORD ASSY ENG NE-MMOT	10
⊙	2DC12150		PULLEY TENSION	8		2DC27140		WIRE ENG NE-LSU	3
⊙	2DC12170		SPR NG TENSION	8		2DC27150		CORE FFC1	8
⊙	2DC12180		BELT SCANNER	8		2DC27160		CORE FFC2	10
	2DC12190		RAIL SCANNER	8		2DC27410		AC CORD 120 ASSY	11
⊙	2DC12200		LAMP SCANNER	8		2DD02010		PLATE EARTH CONTROLLER	2
	2DC12210		STANDARD PLATE SHADING	8		2DD02020		PLATE EARTH SW	2
⊙	2DC12280		STOPPER 8	8		2DD02030		PLATE EARTH SHIELD	10
	2DC12300		GROUND PLATE SCANNER	8	⊙	2DD25010		COVER OPERATION(1/2)	9
	2DC12310		HOLDER FFC	8		2DD25040		KEY FUNCTION	9

• Parts with "⊙" indicates the spare parts.

SP	Part.No.	Alterna ive.	Description	Fig.No.	SP	Part.No.	Alternative.	Description	Fig.No.
	2DD25050		KEY DECISION	9	⊙	302DD28041	2DD28041	P.W BOARD ASSY MFPPS200	10
	2DD25060		KEY STATUS	9	⊙	302DD28071	2DD28071	TRANS ASSY	10
	2DD25070		KEY ONE TOUCH	9	⊙	302DD93011	2DD93011	PARTS, IMAGE SCANNER, SP	8
	2DD25080		KEY CONTROL	9	⊙	302FM93111	2FM93111	LK-101	3
	2DD25140		LEFT DUST SHIELD	9	⊙	302GM01140	2GM01140	P.W.BOARD ASSY SCANNER	8
	2DD25150		BARRIER LCD	9	⊙	302GM01150	2GM01150	P.W BOARD ASSY BIAS	10
	2DD25190		SHEET ONE TOUCH	9,11	⊙	302GM01180	2GM01180	P.W BOARD ASSY LED	3
	2DD26010		SHIELD CONTROLLER (1/3)	10	⊙	302GM01190	2GM01190	FULL SENSOR ASSY	3
	2DD26020		LID CONTROLLER L	1	⊙	302GM01200	2GM01200	TE SENSOR ASSY	3
	2DD26040		HOLDER SPEAKER	1	⊙	302GM01210	2GM01210	P.W BOARD ASSY DIMM	11
	2DD26070		PLATE OPTION	10	⊙	302GM01310	2GM01310	P.W B ASSY MAIN EU(SP)	10
	2DD26080		MOUNT SARCON MA N	1	⊙	302GM01330	2GM01330	P.W B ASSY MAIN US(SP)	10
	2DD26090		PLATE SW REG	10	⊙	302GM01350	2GM01350	P.W B ASSY MAIN KMSG(SP)	10
	2DD26100		SHEET MAIN PCB	1	⊙	302GM01380	2GM01380	P.W B ASSY MAIN KMAUS(SP)	10
	2DD27020		CONN.CORD ASSY ENG-BIASH	10	⊙	302GM01410	2GM01410	P.W B ASSY ENG NE(SP)	10
	2DD27030		CONN.CORD ASSY ENG-BIASY	10	⊙	302GM04010	2GM04010	COVER FRONT U	1
	2DD27040		CONN.CORD ASSY SCN-MA N1	8	⊙	302GM04020	2GM04020	COVER FRONT E	1
	2DD27050		CONN.CORD ASSY SCN-PANEL	8	⊙	302GM05010	2GM05010	SHEET OPERATION E	9
	2DD27091		CONN.CORD ASSY SCN-CCD	8	⊙	302GM05030	2GM05030	KEY OPERATION 10	9
	2DD27100		BIND NG CORE	9	⊙	302GM17010	2GM17010	RETAIN NG P N MIRROR FRAME	1
	2DD27110		GASKET SH ELD 3X4X10	8	⊙	302GM44010	2GM44010	SOLENOID FEED	4
	2DD27160		SHEET EMI	1,8	⊙	302GM44020	2GM44020	SOLENOID REGIST	4
	2DD27170		CONN.CORD ASSY EARTH FAX	10	⊙	302GM44030	2GM44030	SOLENOID MPF	4
	2DD28100		SHEET RADIATOR A	10	⊙	302GM93010	2GM93010	PARTS,OPE PANEL (E),SP	9
	2DD28120		SHEET RADIATOR C	1,10	⊙	3DB27160		SPEAKER(PBF)	1
	2DD28140		SHEET SW REG E	10		3HK27050		CORE 8-16X10	9
	2DD28150		SHEET SW REG J	10		5AACCNRM0GEA	2A827580	CONN. CORD ASSY	3
	2DD28160		SHEET SW REG J SUB	10		5AACCNRM1GEA	2A827590	CONN. CORD ASSY	4
	2FM02710	5MVS422KF010	SPACER PAD	3		5AAMDK5P++01	4AK85040	CLEANING KIT C	11
	2FM06010	5MVX765SH004	GUIDE SIDE L	7		5AAVCLTCH016	2A806120	CLUTCH REGIST	2
	2FM06020	5MVX765SH005	GUIDE SIDE R	7	⊙	5AAVCLTCH031	2FM06040	CLUTCH MPF	2
	2FM06030	5MMW261LD065	SPR NG BOTTOM MPF	3	⊙	5AAVROLL+044	2A806010	ROLLER FEED ASSY	2
⊙	2FM14060	5MMT876SN102	ROLLER TRANSFER C	2	⊙	5AAVROLL+045	2A806510	ROLLER MPF ASSY	3
⊙	2FM14070	5MMT876SN103	ROLLER TRANSFER I	2	⊙	5AAVSEPR015	2A820360	SEPARATOR ASSY	6
⊙	2FM68320		SEPARATOR PAPER ASSY	7	⊙	5AAY3010E+31	2A868610	EARTH GUIDE ASSY	2
⊙	2FM93081	5PLPXYKAPKX	CT-101(A4) CASSETTE ASSY	7	⊙	5AAY3010E+58	2A868700	COVER REAR ASSY	3
⊙	2FM93093		PU-102 PROCESS UNIT	5	⊙	5EYFFQ16001++01	2BY20020	THERMOSTAT 250V160 C	6
⊙	2FM93101	5PLPXYNAPKX	CT-101(LTR) CASSETTE ASSY	7	⊙	5FNXGP1A73A++02	2DC27180	PT.SENSOR GP1A73AJ00	3
⊙	302A820161	2A820161	GEAR HEAT Z33	6		5FZBL003040++02	Y87H5010	BATTERY CR2032	10
⊙	302DC20021	2DC20021	HEATER 230 FIXING	6		5MBSP43006NW++R	B4A03060	+TP-A SCREW M3X06(TRIVALENT CHROMATING)	6,8
⊙	302DC20031	2DC20031	HEATER 120 FIXING	6		5MBSPP3006NW++R	B0B03060	PAN HEAD SCREW(+) / M3 X 6 CRFREE	10
⊙	302DC22011	2DC22011	MOTOR MAIN	4		5MBTPB3006TW++R	B1A53060	+B ND TAP-TITE S SCREW M3X06	1,2,4,10
⊙	302DC93052	2DC93052	FK-100 FUSER UNIT (E) SP	6		5MBTPB4006TW++R	B1A54060	+BIND TAP-TITE S SCREW M4X06	10
⊙	302DC93062	2DC93062	FK-100 FUSER UNIT (U) SP	6		5MML211RD002	2A820220	HOLDER LAMP B	6
⊙	302DC93084	2DC93084	PARTS,DRIVE UNIT SP	4		5MMP141LD002	2A807510	PLATE SIDE GUIDE	7
⊙	302DC93112	2DC93112	PARTS.PLATEN COVER SP	9		5MMP141LD003	2A807520	PLATE STOPPER	7
⊙	302DD04021	2DD04021	LID TOP	1		5MMS111SL002	2BY20050	NUT FUSER A	6
	302DD25131	2DD25131	RIGHT DUST SH ELD	9		5MMS775SL001	2A827010	PLATE CONTROLLER	10
	302DD27180	2DD27180	AC CORD 230 ASSY	11		5MMS856SL001	2A807170	PLATE BOTTOM	7
⊙	302DD28031	2DD28031	P.W.BOARD ASSY MFPPS100	10		5MMT263SN012++R	2D903100	SCREW OP	1,10

• Parts with "⊙" indicates the spare parts.

SP	Part.No.	Alternative.	Description	Fig.No.	SP	Part.No.	Alternative.	Description	Fig.No.
⊙	5MMT364SN003	2A822130	PIN DRIVE	2	⊙	5MVG138DN042	2A822170	GEAR Z24H	4
	5MMT365SN003	2A815020	PIN CONTACT BIAS	2	⊙	5MVG148DN044	2A822050	GEAR Z40H	4
	5MMT766SN007	2A806020	SHAFT FEED	2	⊙	5MVG148DN045	2A822080	GEAR Z38H	2
	5MMT766SN008	2A806530	SHAFT MPF	3	⊙	5MVG148DN046	2A822090	GEAR FREE Z40H	2
⊙	5MMT774SN001	2A820080	ROLLER EXIT LOW	6	⊙	5MVG148DN047	2A822110	GEAR Z34S	2
⊙	5MMT865SN010	2A806050	ROLLER REGIST UP	2	⊙	5MVG148DN048	2A822120	GEAR Z40S	2
⊙	5MMT874SN007	2A820090	ROLLER EXIT UP	2	⊙	5MVG148DN049	2A822160	GEAR Z37S	2
⊙	5MMT876AX002	2BY20010	ROLLER HEAT	6	⊙	5MVG148DN050	2A822190	GEAR Z36H-Z21H	4
⊙	5MMT876SN073	2A806040	ROLLER REGIST LOW	2	⊙	5MVG148XN009	2A820180	GEAR IDLE Z34	6
⊙	5MMW171LD006	2A807530	SPR NG STOPPER	7	⊙	5MVG168DN017	2A822030	GEAR Z68H-Z21H	4
	5MMW251LD043	2A816040	SPR NG TC L	2	⊙	5MVG169DN032	2A822060	GEAR Z95H-Z21H	4
	5MMW251LD045	2A807140	SPR NG LOCK	7	⊙	5MVG169DN033	2A822070	GEAR Z53H	4
	5MMW251LD047	2A807110	SPR NG SEPARATOR C	7		5MVL311KF003	2A807550	SHEET CASSETTE	7
	5MMW261LD017	2A820520	SPR NG ACTUATOR	6		5MVM161DW001	2A806260	BUSH PULLEY FEED	2
	5MMW261LD023	2A806410	SPR NG REGIST R	2		5MVM176DN026	2A806030	BUSH FEED	2,3
	5MMW261LD036	2A814570	SPR NG TE SENSOR	3		5MVM176DW001	2A821010	BUSH EXIT	2
	5MMW261LD038	2A806570	SPR NG SEPA MPF	3		5MVM188XN015	2A820120	BUSH HEAT R	6
	5MMW261LD055	2A820350	SPR NG SEPARATOR	6		5MVM188XN016	2A820131	BUSH HEAT L	6
⊙	5MMW271LD010	2A822140	SPR NG FREE	10	⊙	5MVM273DB005	2A820100	PULLEY EXIT	3,6
	5MMW341LD005	2A802070	SPR NG P N CASSETTE	2		5MVS217SN002	2A806280	PAD SOLENOID	4
	5MMW341LD006	2A813050	SPR NG SHUTTER LSU	3		5MVS222KN006	2A820970	SHEET REAR	3
	5MMW351LD006	2A802060	SPR NG INTERLOCK	2		5MVS222KW001	2A820980	SHEET REAR B	3
	5MMW361LD015	2A815010	SPR NG P N BIAS	2		5MVS228RB019	2A802500	FOOT	3
	5MMW552LD002	2A807540	SPR NG CASSETTE	7		5MVS312KF011	2A806480	SHEET GUIDE	3
	5MMW601LD011	2A820260	SPR NG PULLEY	6		5MVS315CN001	2A807910	SPACER CASSETTE	7
	5MMX221LD024	2A813030	SPR NG M RROR	3		5MVS416XN001	2A806560	PAD SEPARATOR MPF	3
	5MMX322LD022	2A820340	PLATE TRAY	3		5MVS431TX001	2A806760	TAPE SEPARATOR	3
	5MMX332LD013	2A806750	PLATE EARTH MPF	4		5MVS441KF008	2A806170	SHEET REGIST SW	2
	5MMX332LD021	2A820850	BKT PULLEY FD	3		5MVS616XN001	2A807080	PAD BOTTOM	7
	5MMX521LD005	2A822150	PLATE EARTH DRUM	4		5MVS616XN002	2A806680	PAD BOTTOM MPF	3
	5MMX532LD005	2A806210	CONTACT EARTH REG	2		5MVS622KF011	2BY06050	SHEET REGIST R	2
	5MMX665LD004	2A820280	PLATE EARTH FUSER	6		5MVS622KF012	2BY06060	SHEET REGIST L	2
	5MMX773SL001	2A827030	PLATE SW REG	10		5MVT653DW001	2A802050	PIN CASSETTE	2
	5MVB663SB048	2A822200	COVER CORD	10	⊙	5MVT676DB002	2A806220	PULLEY FEED	2
	5MVB863KB003	2A820023	FRAME FUSER UP	6		5MVVL661WN34	2A805010	LABEL LASER CAUTION	3
	5MVB872SH019	2A806661	BASE MPF	3		5MVVL731WN14	2A805020	LABEL FUSER CAUTION	6
	5MVB874CH002	2A802030	COVER PWB	10	⊙	5MVX111DN003	2A806250	RING STOPPER	2,3,8
⊙	5MVB874SH018	2A820950	COVER REAR	3		5MVX211DB016	2A820110	BUSH EXIT	6
	5MVB874SH019	2A820961	TRAY EXIT FU	3		5MVX221DB019	2A806420	BUSH REGIST LEFT	2
	5MVB886SH063	2A807010	BASE CASSETTE	7	⊙	5MVX221DB023	2A816020	BUSH TC L	2
⊙	5MVG126DB025	2A806240	GEAR REGIST Z13	2		5MVX221DN014	2A806620	CAM MPF R	3
⊙	5MVG127DB047	2A806230	GEAR REGIST Z20	2	⊙	5MVX221DW006	2A806430	BUSH REGIST RIGHT	2
⊙	5MVG127DB048	2A816060	GEAR TC Z18	2		5MVX221DW008	2A816030	BUSH TC R	2
⊙	5MVG127DN070	2A820190	GEAR IDLE Z18	6	⊙	5MVX322SB020	2A820300	ACTUATOR FUSER B	2
⊙	5MVG127DN071	2A807050	GEAR CASSETTE	7		5MVX422DN005	2A804080	HINGE FRONT L	1
⊙	5MVG137DN029	2A822180	GEAR Z21H	4		5MVX422DN006	2A804090	HINGE FRONT R	1
⊙	5MVG137DN030	2A820290	GEAR EXIT Z23 UP	2		5MVX431DW001	2A807121	LOCK CASSETTE R	7
⊙	5MVG137DN031	2A820170	GEAR EXIT Z23	6		5MVX431DW002	2A807131	LOCK CASSETTE L	7
⊙	5MVG137DN032	2A806720	GEAR MPF	3	⊙	5MVX432DB009	2A806090	ACTUATOR REGIST	2
⊙	5MVG138DN041	2A822100	GEAR FREE Z25S	2		5MVX432DB010	2A806600	ACTUATOR MPF	3

• Parts with "⊙" indicates the spare parts.

SP	Part.No.	Alterna ive.	Description	Fig.No.
	5MVX522DB004	2A806550	SEPARATOR MPF	3
	5MVX541DG002	2A807191	LEVER REAR	7
	5MVX541DG003	2A807161	LEVER SIDE	7
⊙	5MVX542DB003	2A806100	ACTUATOR PE	2
	5MVX721DN001	2A802040	LEVER INTERLOCK	2
	5MVX731CB002	2A820200	ACTUATOR FUSER A	6
	5MVX751SH001	2A806740	TRAY MPF B	3
	5MVX752SH002	2A806700	GUIDE MPF R	3
	5MVX752SH003	2A806710	GUIDE MPF L	3
	5MVX852CB003	2A806670	BOTTOM PLATE MPF	3
	5MVX854SH002	2A806520	HOLDER MP FEED	3
	5MVX861SH004	2A806730	TRAY MPF A	3
	5MVX882SH002	2A807060	BOTTOM CASSETTE	7
⊙	5PLPWCTAPKX	2FM93120	MC-41 MCH ASSY	5
⊙	5SNSA2DC++13	2DC93102	PARTS,MPF COVER SP	3
⊙	5SNSP0015024	2DC04020	COVER LEFT	1
⊙	5SNSP0015025	2DC04040	COVER MFP	3
⊙	5SNSP0015026	2DC04050	COVER DIMM	1
⊙	5SNSP0015027	2DC04060	COVER RIGHT	1
⊙	5SNSP0015030	2DC04080	COVER TOP	1
⊙	5SNSP0015031	2DC12160	MOTOR SCANNER	8
	7BB100305H	BB018180	+B ND TAP-TITE S SCREW 3X05	4
	7BB300306H	BB018140	+B ND TAP-TITE B SCREW 3X6	3,6
	7BB300308H	BB018160	+B ND TAP-TITE B SCREW 3X8	1,6,8,9
	7BB300312H	BB018170	+B ND TAP-TITE B SCREW 3X12	6
	7BB302305H	BB018540	+TP TAP-TITE B SCREW 3X05	3
	7BB302306H	BB018460	+TP TAP-TITE B SCREW M3X6(CRFREE)	7
	7BB302308H	BB018120	+TP TAP-TITE B SCREW 3X08	3,8
	7BB302310H	BB018150	+TP TAP-TITE B SCREW 3X10	9
	7BC1003055++H01	BC018230	HEXA NUT M3	6
	7BC1004070++H01	BC018240	HEXA NUT M4	8
	7BD103060++H01	BD018610	E STOP RING E-3	2,6
	7BD105060++H01	BD018620	E STOP RING E-5	2
	7YZM390008++H01	YZ019370	ACCESS.CLAMP	10
	7ZGSTG221135H01	ZG020870	SHIELD GASKET	8
	7ZGSTG335050H01	ZG020550	SHIELD GASKET	8
	7ZGSTGL10015H01	ZG019360	SHIELD GASKET	1,8
	B1B73100		+B ND TAP-TITE B SCREW M3X10	3,8
	B1B74100		+BIND T.T SCREW(+) / M4 X 10 CRFREE B-T	1,2,3,4,6,8,10
	B4B74100		+TP T.T SCREW(+) / M4 X 10 CRFREE B-T	2,3
	BAB53060		+TP TAP-TITE S SCREW M3X06	1,2
	C2806130		POLY SLIDER M6.2X 13X.25T PA	8
	C2891100		POLY-SLIDER WASHER 4.1X10X0.3T	2
	C2892950		POLY SLIDER /M6.2X9.5X0.5T PLASTC	2
	C2894650		POLY SLIDER /M4.1X6.5X0.25T POLY	2
	C3790080		WAVE WASHER / M4X8 0X0 2T SUS	2
	D4000400		STOP RING CSTW-4	7
	E0020080		SPR NG P N 2X8	2,3
	M2105970		CLAMP,CKN-10(KITAGAWA)	10
	M2108800		SPACER,KGPS-3.5S(KITAGAWA)	4

• Parts with "⊙" indicates the spare parts.