



---

**ECOSYS FS-1020MFP**  
**ECOSYS FS-1220MFP**  
**ECOSYS FS-1120MFP**  
**ECOSYS FS-1320MFP**  
**ECOSYS FS-1025MFP**  
**ECOSYS FS-1125MFP**  
**ECOSYS FS-1325MFP**

## **PARTS LIST**

Published in August 2012  
2M7PL070  
842M7120  
First Edition

———— CONTENTS ————

FIG. 1	Covers .....	2
FIG. 2	Frames .....	4
FIG. 3	Paper Feed Section .....	6
FIG. 4	Developer Section .....	8
FIG. 5	Image Formation Section .....	10
FIG. 6	Fuser Section .....	12
FIG. 7	Drive Section .....	14
FIG. 8	Electrical Components .....	16
FIG. 9	Scanner Section .....	18
FIG. 10	Operation Section .....	20
FIG. 11	Document Processor & Original Cover & Options .	22
FIG. 12	Maintenance Kits.....	24
	• INDEX .....	25

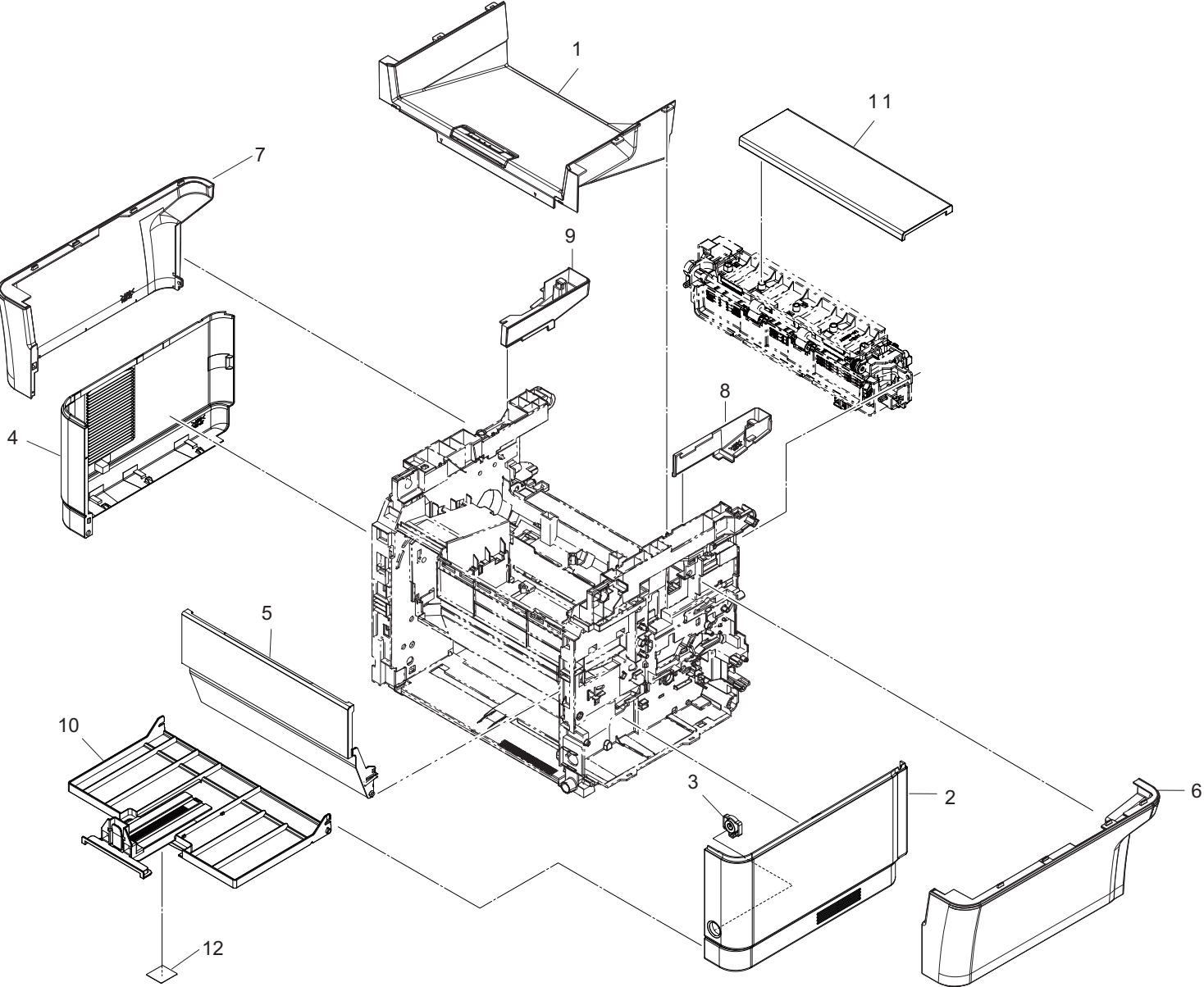


FIG. 1 Covers

2M4/2M5/2M6/2M7

Ref. No.	Part.No.	Alternative.	Description	Notes	Quantity	
					120	220-240
1	302M494010	2M494010	PARTS COVER TOP ASSY SP		1	1
2	302M204020	2M204020	COVER RIGHT		1	1
3	302M204100	2M204100	KEY POWER SWITCH		1	1
4	302M204030	2M204030	COVER LEFT		1	1
5	302M294020	2M294020	PARTS COVER FRONT ASSY SP		1	1
6	302M404020	2M404020	COVER RIGHT UPPER		1	1
7	302M404030	2M404030	COVER LEFT UPPER		1	1
8	302M404040	2M404040	COVER REAR UPPER R		1	1
9	302M404050	2M404050	COVER REAR UPPER L		1	1
10	302M294060	2M294060	PARTS TRAY FRONT ASSY SP		1	1
10	302M494020	2M494020	PARTS TRAY FRONT ASSY SP CN	3in1-20ppm-Chinese model		1
10	302M594040	2M594040	PARTS TRAY FRONT ASSY SP CN	4in1-20ppm-Chinese model		1
10	302M694010	2M694010	PARTS TRAY FRONT ASSY SP CN	3in1-25ppm-Chinese model		1
10	302M794010	2M794010	PARTS TRAY FRONT ASSY SP CN	4in1-25ppm-Chinese model		1
11	302M204060	2M204060	COVER FD		1	1
12	302G634070	2G634070	LABEL ENERGY STAR		1	1

•Parts with Ref.No. indicate maintenance parts and the ones without it indicate out of the above.

•Parts with "\*" are component parts or sub-assemblies of the assembly appearing immediately above them.  
 •Parts with "• •" are component parts or sub-assembly with "\*" appearing immediately above them.

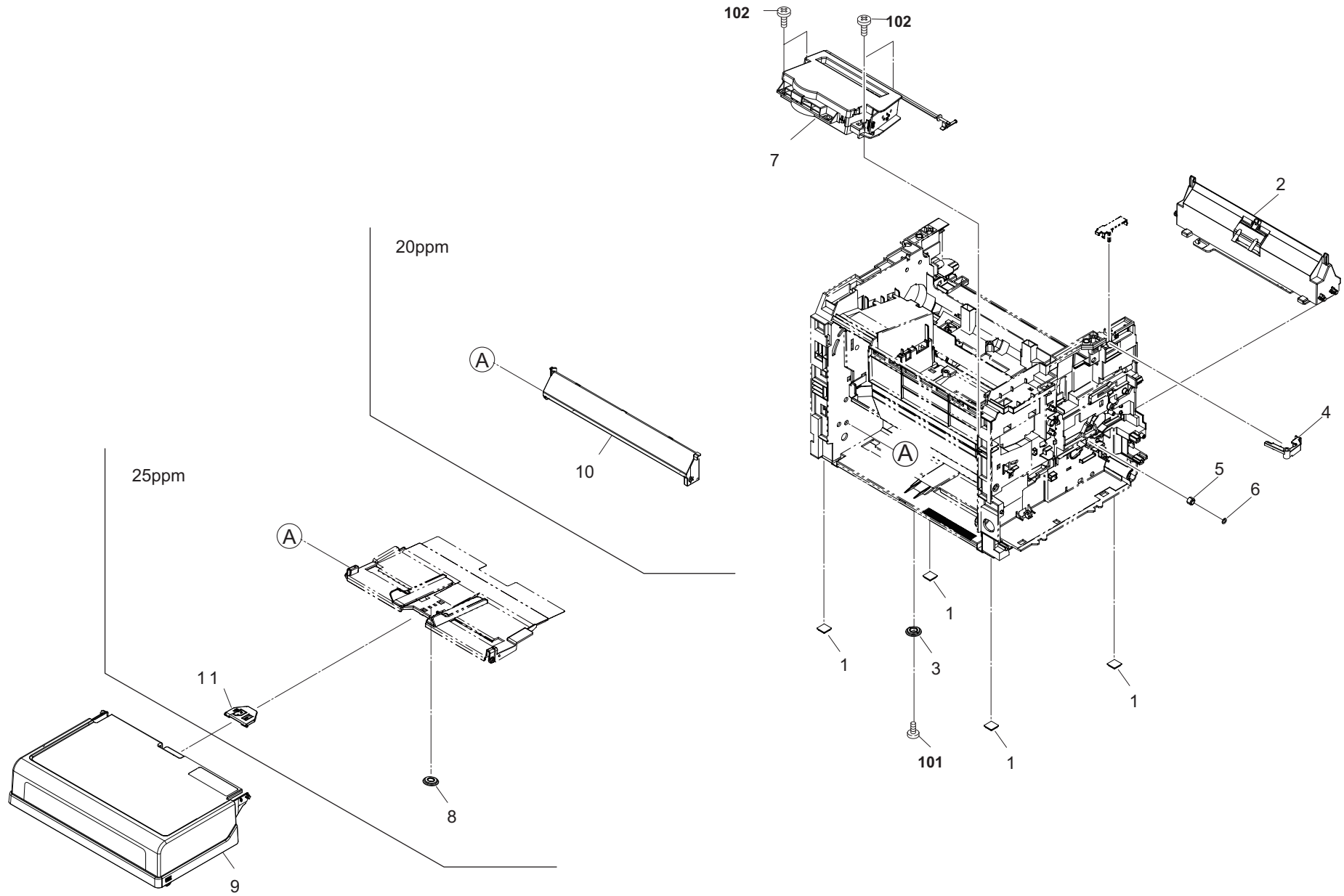


FIG. 2 Frames

2M4/2M5/2M6/2M7

Ref. No.	Part.No.	Alternative.	Description	Notes	Quantity	
					120	220-240
1	302M202850	2M202850	FOOT		4	4
2	302M294050	2M294050	PARTS FRAME FEED BOTTOM ASSY SP		1	1
3	302M202750	2M202750	GEAR MANUAL		1	1
4	302M202470	2M202470	LEVER INTERLOCK C		1	1
5	302M224050	2M224050	GEAR REGIST UP Z15L		1	1
6	2BG22990	2BG22990	CUT WASHER 4		1	1
7	302M293060	2M293060	LK-1110	20ppm	1	1
7	302M393030	2M393030	LK-1120	25ppm	1	1
8	302B700780	2B700780	GEAR MANUAL	25ppm	1	1
9	302M209110	2M209110	COVER TRAY	20ppm	1	1
9	302M309020	2M309020	COVER TRAY	25ppm	1	1
10	302M209180	2M209180	COVER TRAY B	20ppm	1	1
11	302M309010	2M309010	COVER TRAY C	25ppm	1	1
101	7BB202308H	BB105690	+TP-FLAT T.T P SCREW 3X8			
102	7BB200410H	BB105700	+BIND T.T P SCREW 4X10			

•Parts with Ref.No. indicate maintenance parts and the ones without it indicate out of the above.

•Parts with "\*" are component parts or sub-assemblies of the assembly appearing immediately above them.  
 •Parts with "•" are component parts or sub-assembly with "•" appearing immediately above them.

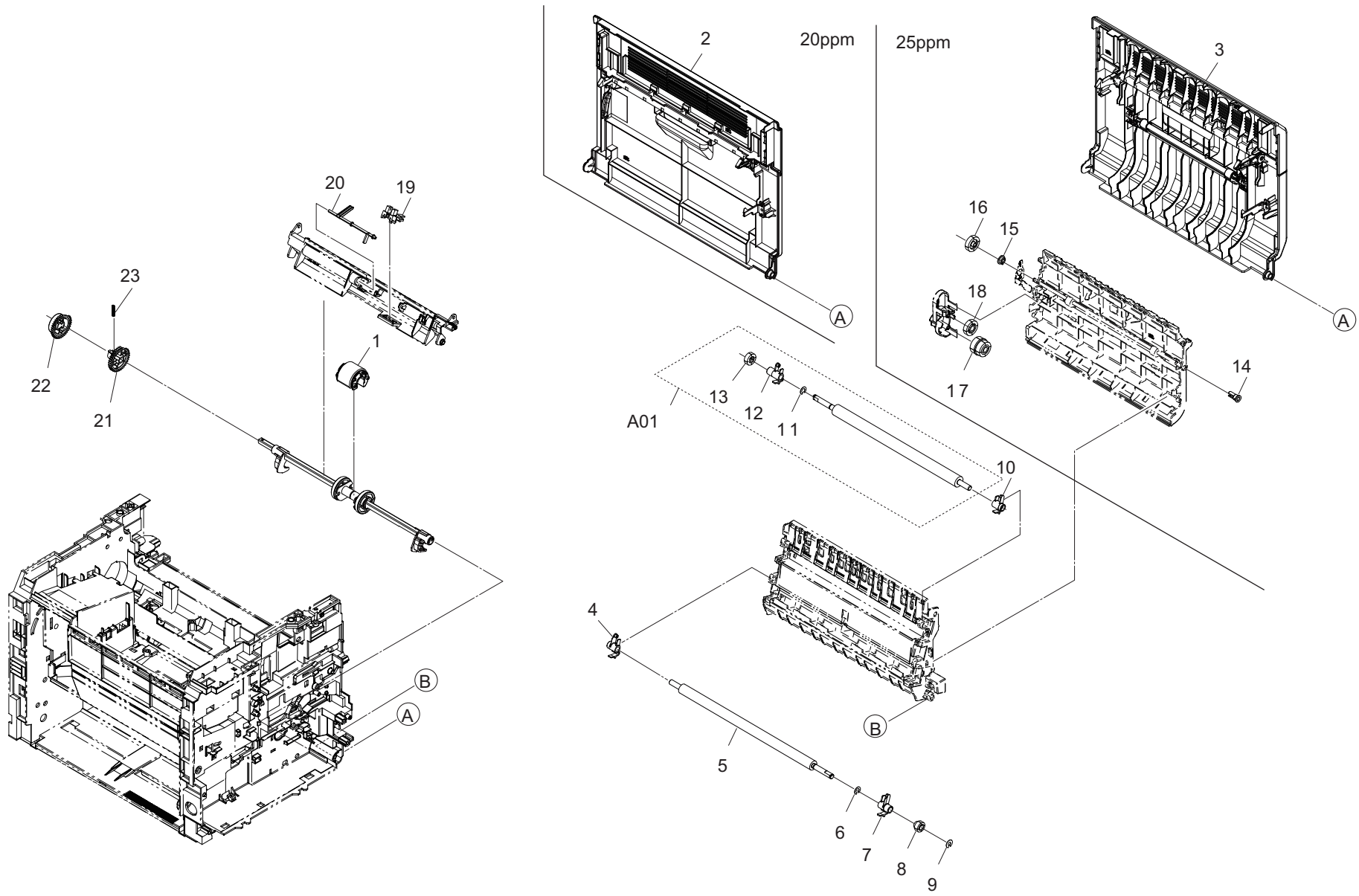


FIG. 3 Paper Feed Section

2M4/2M5/2M6/2M7

Ref. No.	Part.No.	Alternative.	Description	Notes	Quantity	
					120	220-240
1	302M294200	2M294200	PARTS ROLLER FEED ASSY SP		1	1
2	302M294040	2M294040	PARTS COVER REAR L ASSY SP	20ppm	1	1
3	302M394010	2M394010	PARTS COVER REAR H ASSY SP	25ppm	1	1
4	302M224060	2M224060	BUSH REGIST L		1	1
5	302M294190	2M294190	PARTS ROLLER REGIST LOW SP		1	1
6	302KK04570	2KK04570	CUT WASHER 5		1	1
7	302M224070	2M224070	BUSH REGIST R		1	1
8	302M224040	2M224040	GEAR REGIST LOW Z23R		1	1
9	302HG12310	2HG12310	CUT WASHER 4		1	1
10	302M224160	2M224160	BUSH TRANS R		1	1
A01	302M294240	2M294240	PARTS ROLLER TRANSFER ASSY I SP		1	
A01	302M294250	2M294250	PARTS ROLLER TRANSFER ASSY C SP			1
11	*302KK04570	2KK04570	CUT WASHER 5		1	1
12	*302M224150	2M224150	BUSH TRANS L		1	1
13	*302M224140	2M224140	GEAR TRANS Z17S		1	1
14	302HN25450	2HN25450	BUSH EXIT	25ppm	1	1
15	302F929140	2F929140	BUSH DU	25ppm	1	1
16	302M329070	2M329070	GEAR DU Z22S	25ppm	1	1
17	302M329050	2M329050	GEAR Z23R-Z22S	25ppm	1	1
18	302M329040	2M329040	GEAR Z22S	25ppm	1	1
19	303M894260	3M894260	PARTS SENSOR OPT SP		1	1
20	302M224210	2M224210	ACTUATOR REGIST		1	1
21	302M231170	2M231170	GEAR A Z38S		1	1
22	302M231180	2M231180	GEAR B Z38S		1	1
23	302HN31650	2HN31650	SPRING INPUT MPF		1	1

•Parts with Ref.No. indicate maintenance parts and the ones without it indicate out of the above.

•Parts with "-" are component parts or sub-assemblies of the assembly appearing immediately above them.

•Parts with "•" are component parts or sub-assembly with "•" appearing immediately above them.



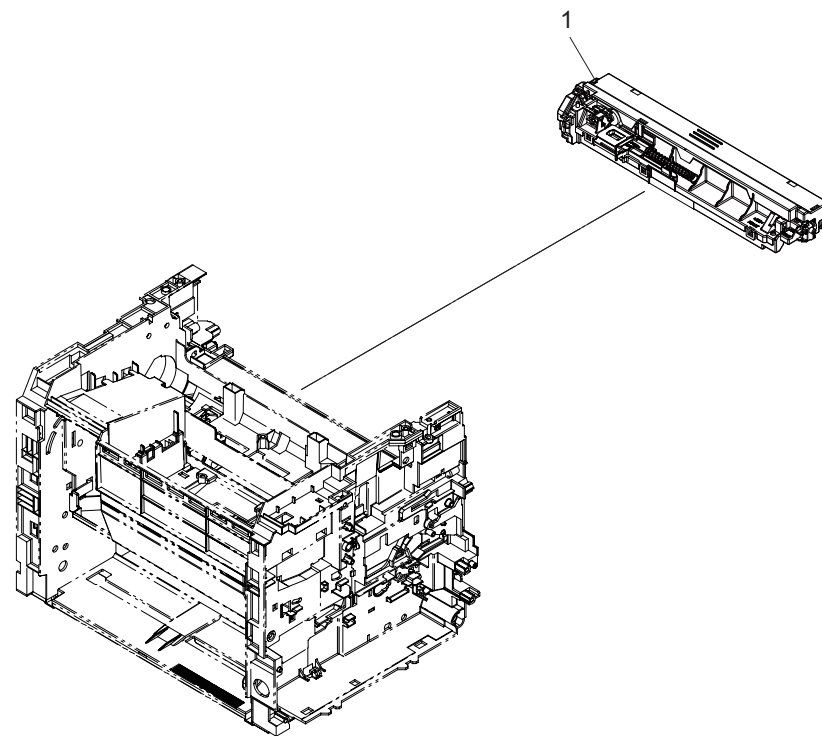


FIG. 4 Developer Section

2M4/2M5/2M6/2M7

Ref. No.	Part.No.	Alternative.	Description	Notes	Quantity	
					120	220-240
1	302M293020	2M293020	DV-1110		1	1
1	302M29C020	2M29C020	DV-1110	Chinese model		1

•Parts with Ref.No. indicate maintenance parts and the ones without it indicate out of the above.

•Parts with "\*" are component parts or sub-assemblies of the assembly appearing immediately above them.  
 •Parts with "• •" are component parts or sub-assembly with "\*" appearing immediately above them.

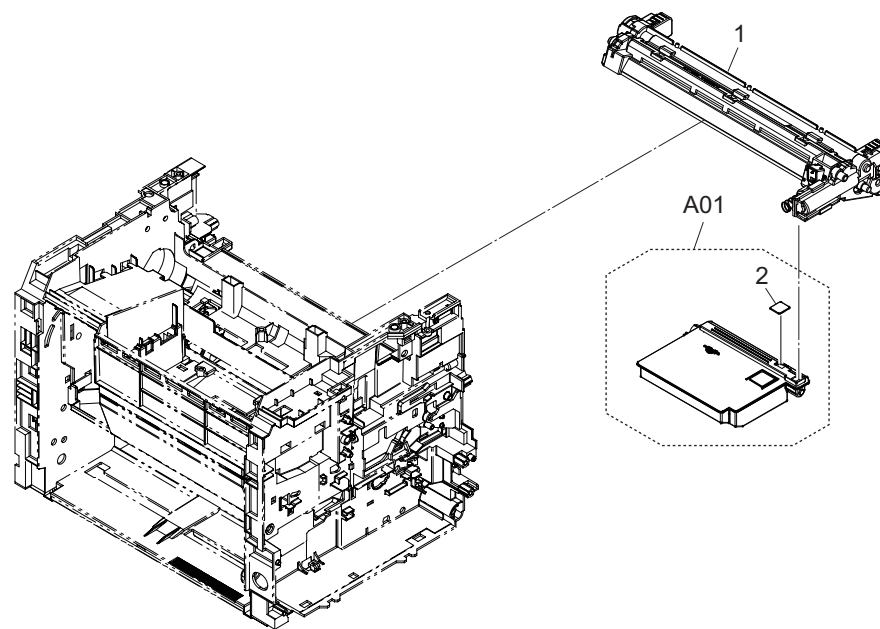


FIG. 5 Image Formation Section

2M4/2M5/2M6/2M7

Ref. No.	Part.No.	Alternative.	Description	Notes	Quantity	
					120	220-240
1	302M293010	2M293010	DK-1110	Chinese model	1	1
1	302M29C010	2M29C010	DK-1110		1	1
A01	302M293030	2M293030	WT-1110		1	1
2	*302M213060	2M213060	CAP WASTE		1	1

•Parts with Ref.No. indicate maintenance parts and the ones without it indicate out of the above.

•Parts with "\*" are component parts or sub-assemblies of the assembly appearing immediately above them.  
 •Parts with "\* •" are component parts or sub-assembly with "\*" appearing immediately above them.

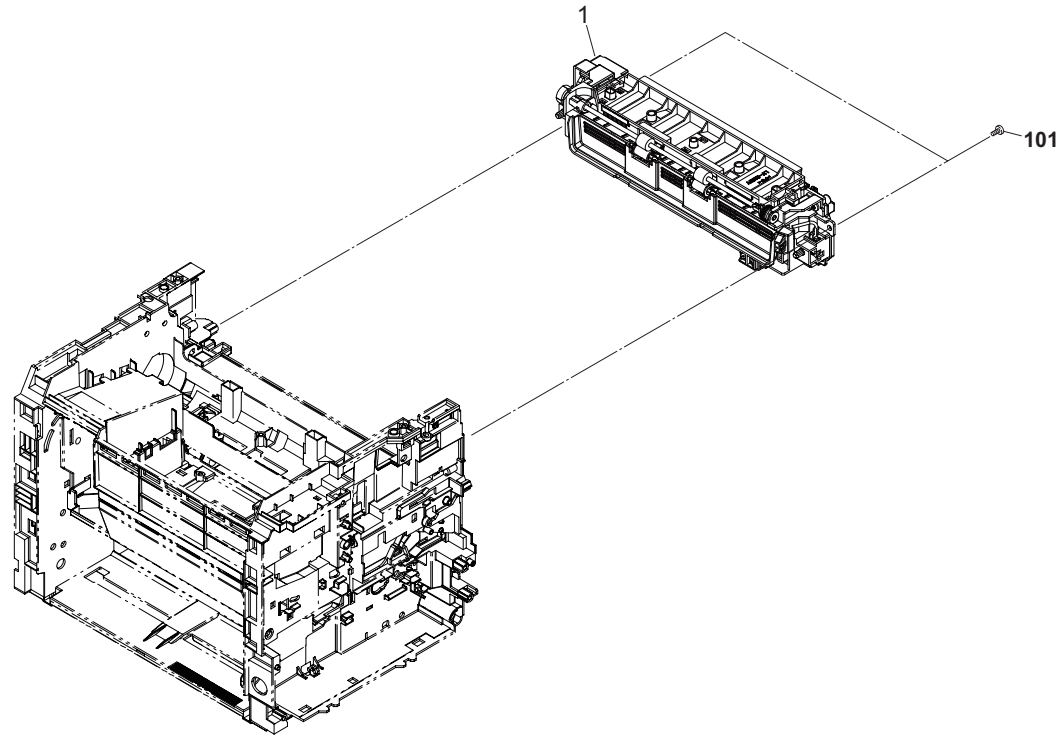


FIG. 6 Fuser Section

2M4/2M5/2M6/2M7

Ref. No.	Part.No.	Alternative.	Description	Notes	Quantity	
					120	220-240
1	302M293050	2M293050	FK-1110(U)	3in1-20ppm	1	
1	302M293040	2M293040	FK-1110(E)	3in1-20ppm		1
1	302M29C040	2M29C040	FK-1110(E)	3in1-20ppm-Chinese model		1
1	302M593020	2M593020	FK-1111(U)	4in1-20ppm	1	
1	302M593010	2M593010	FK-1111(E)	4in1-20ppm		1
1	302M59C010	2M59C010	FK-1111(E)	4in1-20ppm-Chinese model		1
1	302M393020	2M393020	FK-1120(U)	25ppm	1	
1	302M393010	2M393010	FK-1120(E)	25ppm		1
1	302M39C010	2M39C010	FK-1120(E)	25ppm-Chinese model		1
101	7BB200410H	BB105700	+BIND T.T P SCREW 4X10			

•Parts with Ref.No. indicate maintenance parts and the ones without it indicate out of the above.

•Parts with "\*" are component parts or sub-assemblies of the assembly appearing immediately above them.  
 •Parts with "• •" are component parts or sub-assembly with "\*" appearing immediately above them.

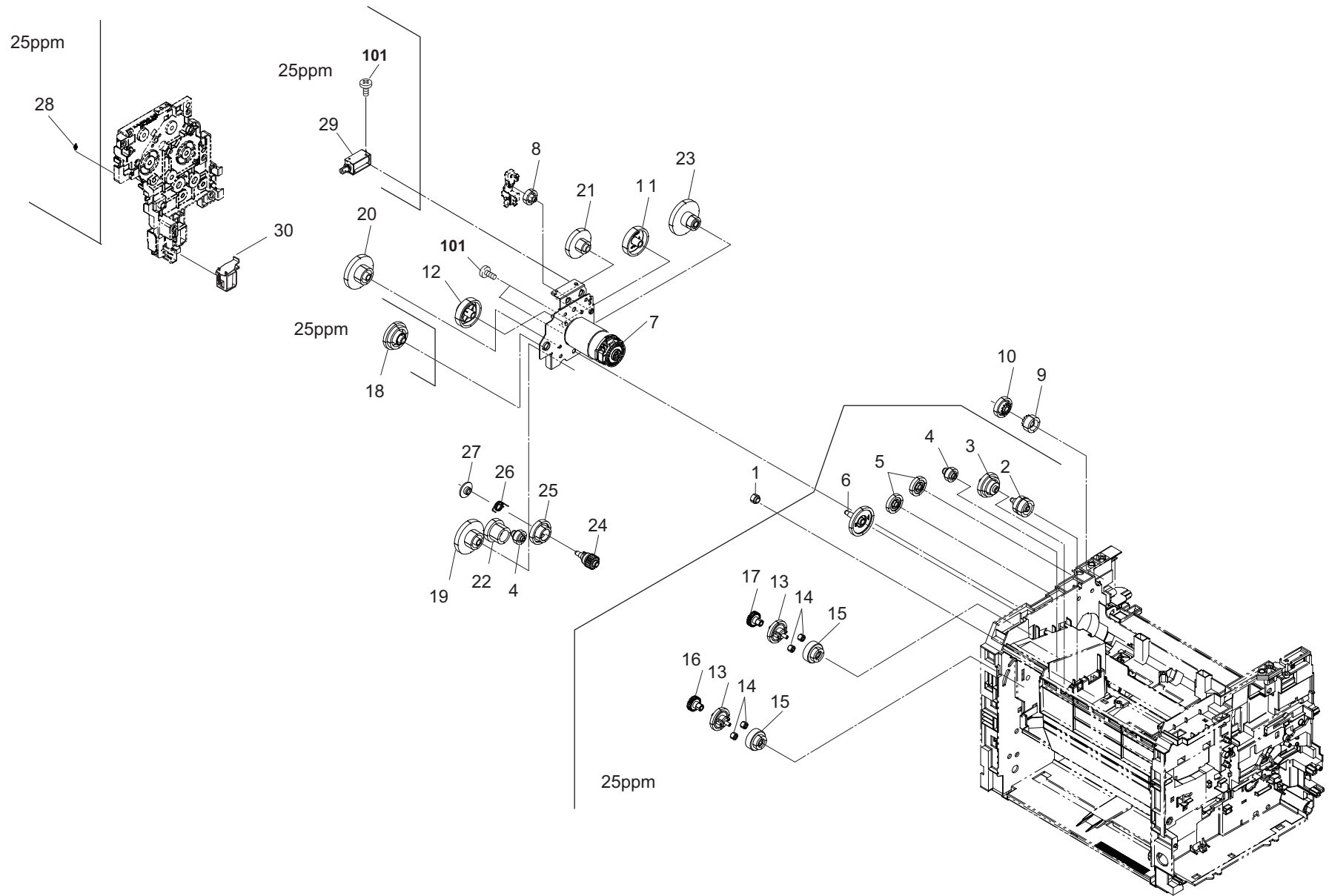


FIG. 7 Drive Section

2M4/2M5/2M6/2M7

Ref. No.	Part.No.	Alternative.	Description	Notes	Quantity	
					120	220-240
1	302HN24060	2HN24060	GEAR Z19L REG REAR		1	1
2	302M331030	2M331030	GEAR Z39L-Z24L	25ppm	1	1
3	302M331020	2M331020	GEAR Z57L-Z47R	25ppm	1	1
4	302M231150	2M231150	GEAR Z31R	25ppm	2	2
4	302M231150	2M231150	GEAR Z31R	20ppm	1	1
5	302M331110	2M331110	GEAR Z28S	25ppm	2	2
6	302M331100	2M331100	GEAR Z45S	25ppm	1	1
7	302M394030	2M394030	PARTS MOTOR DC ASSY SP		1	1
8	302M231090	2M231090	GEAR Z34L		1	1
9	302M231110	2M231110	GEAR Z23S		1	1
10	302M231100	2M231100	GEAR Z47R		1	1
11	302M231050	2M231050	GEAR Z68L-Z20R		1	1
12	302M231070	2M231070	GEAR Z68L-Z34R		1	1
13	302M331050	2M331050	GEAR Z34S	25ppm	2	2
14	302M331080	2M331080	GEAR Z14S	25ppm	4	4
15	302M331090	2M331090	GEAR Z42S-Z20S	25ppm	2	2
16	302M331060	2M331060	GEAR A Z14S	25ppm	1	1
17	302M331070	2M331070	GEAR B Z14S	25ppm	1	1
18	302M331040	2M331040	GEAR Z66R-Z35S	25ppm	1	1
19	302M231130	2M231130	GEAR Z68R		1	1
20	302M231120	2M231120	GEAR Z82L-Z40L		1	1
21	302M231080	2M231080	GEAR Z70L-Z29R		1	1
22	302M231140	2M231140	GEAR Z53L-Z24L		1	1
23	302M231060	2M231060	GEAR Z85L-Z38L		1	1
24	302M231280	2M231280	GEAR Z19S		1	1
25	302M231270	2M231270	GEAR Z57L-Z36R		1	1
26	302M231300	2M231300	SPRING GEAR B		1	1
27	302M231290	2M231290	CAP GEAR		1	1
28	302M331140	2M331140	SPRING CLUTCH	25ppm	1	1
29	302HN94140	2HN94140	SOLENOID FD ASSY SP	25ppm	1	1
30	302GR44150	2GR44150	SOLENOID TONER		1	1
101	7BB000303H	BB107000	+BIND M SCREW 3X3			

•Parts with Ref.No. indicate maintenance parts and the ones without it indicate out of the above.

•Parts with "-" are component parts or sub-assemblies of the assembly appearing immediately above them.

•Parts with "• •" are component parts or sub-assembly with "•" appearing immediately above them.



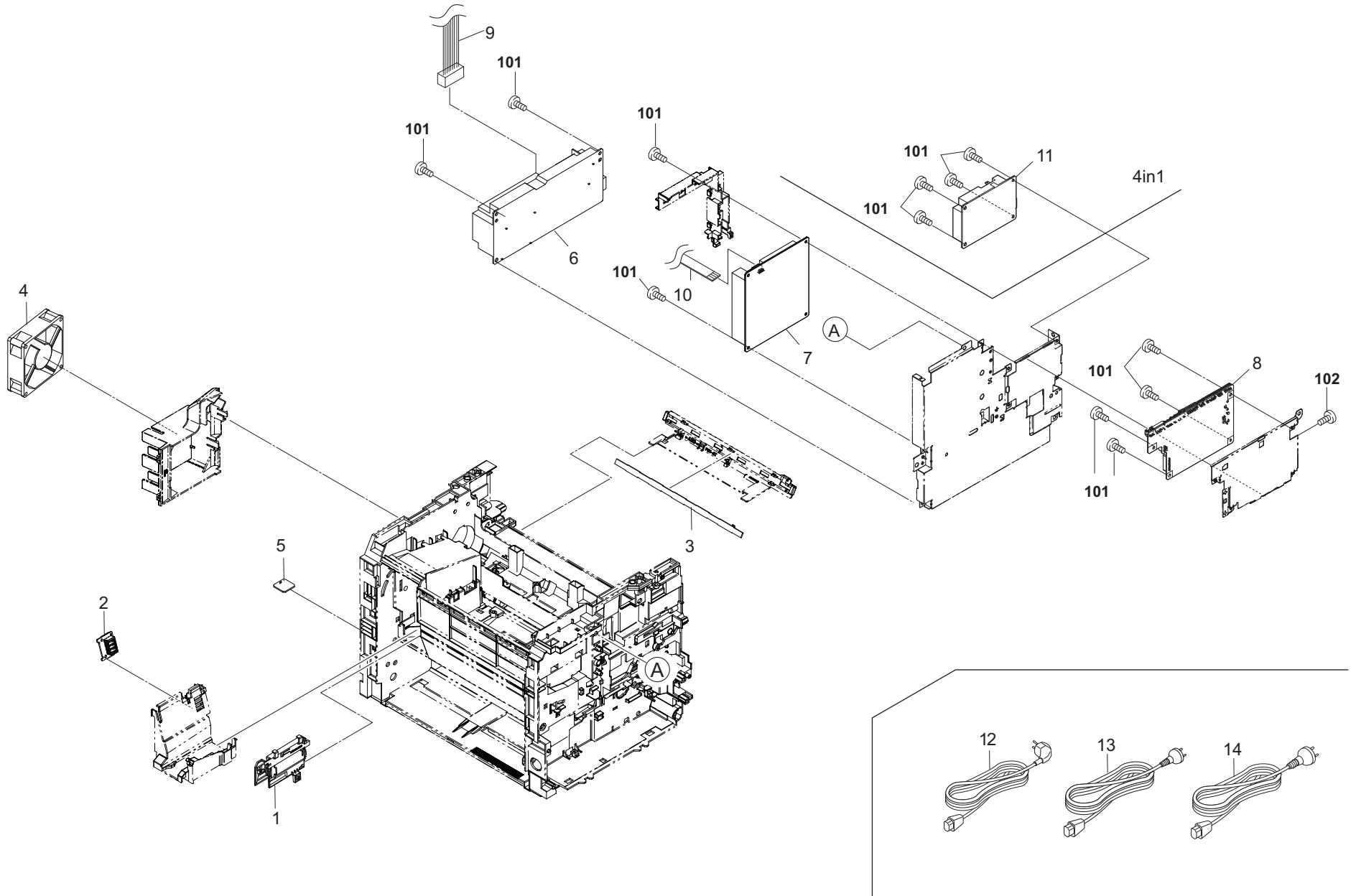


FIG. 8 Electrical Components

2M4/2M5/2M6/2M7

Ref. No.	Part.No.	Alternative.	Description	Notes	Quantity	
					120	220-240
1	302M294030	2M294030	PARTS TE SENSOR ASSY SP		1	1
2	302M294110	2M294110	PARTS PWB ASSY CONTAINER CONNECT SP		1	1
3	302M294120	2M294120	PARTS PWB ASSY ERASER SP		1	1
4	302HN44010	2HN44010	FAN MOTOR		1	1
5	302M294130	2M294130	PARTS PWB ASSY THERMISTOR SP		1	1
6	302M294150	2M294150	PARTS SWITCHING REGULATOR 120V SP		1	
6	302M294140	2M294140	PARTS SWITCHING REGULATOR 230V SP			1
7	302M294160	2M294160	PARTS HIGH VOLTAGE UNIT SP		1	1
8	302M494030	2M494030	PARTS PWB ASSY MAIN SP	3in1-20ppm	1	
8	302M494070	2M494070	PARTS PWB ASSY MAIN SP RU	3in1-20ppm		1
8	302M494080	2M494080	PARTS PWB ASSY MAIN SP AO	3in1-20ppm-Indian model		1
8	302M494090	2M494090	PARTS PWB ASSY MAIN SP CN	3in1-20ppm-Chinese model		1
8	302M494110	2M494110	PARTS PWB ASSY MAIN SP EU	3in1-20ppm-Western european model		1
8	302M594050	2M594050	PARTS PWB ASSY MAIN SP	4in1-20ppm	1	
8	302M594100	2M594100	PARTS PWB ASSY MAIN SP RU	4in1-20ppm		1
8	302M594060	2M594060	PARTS PWB ASSY MAIN SP EU	4in1-20ppm-Western european model		1
8	302M594110	2M594110	PARTS PWB ASSY MAIN SP AO	4in1-20ppm-Indian model		1
8	302M594120	2M594120	PARTS PWB ASSY MAIN SP CN	4in1-20ppm-Chinese model		1
8	302M594140	2M594140	PARTS PWB ASSY MAIN SP AU	4in1-20ppm-Australian model		1
8	302M694020	2M694020	PARTS PWB ASSY MAIN SP	3in1-25ppm	1	
8	302M694040	2M694040	PARTS PWB ASSY MAIN SP RU	3in1-25ppm		1
8	302M694050	2M694050	PARTS PWB ASSY MAIN SP AO	3in1-25ppm-Indian model		1
8	302M694060	2M694060	PARTS PWB ASSY MAIN SP CN	3in1-25ppm-Chinese model		1
8	302M794020	2M794020	PARTS PWB ASSY MAIN SP	4in1-25ppm	1	
8	302M794040	2M794040	PARTS PWB ASSY MAIN SP RU	4in1-25ppm		1
8	302M794030	2M794030	PARTS PWB ASSY MAIN SP EU	4in1-25ppm-Western european model		1
8	302M794050	2M794050	PARTS PWB ASSY MAIN SP AO	4in1-25ppm-Indian model		1
8	302M794060	2M794060	PARTS PWB ASSY MAIN SP CN	4in1-25ppm-Chinese model		1
8	302M794080	2M794080	PARTS PWB ASSY MAIN SP AU	4in1-25ppm-Australian model		1
9	302M446050	2M446050	CONN.CORD ASSY S03791		1	1
10	302M446040	2M446040	CONN.CORD ASSY S03790		1	1
11	302M594080	2M594080	PARTS FAX UNIT E SP	4in1		1
11	302M594090	2M594090	PARTS FAX UNIT U SP	4in1	1	
12	7AAACCUS+10H001	AA068380	AC CORD ASSY US		1	
13	302FV45020	2FV45020	AC CORD ASSY			1
13	7AAACCCN+06H001	AA131920	AC CORD ASSY CN	Chinese model		1
13	7AAACCND+06H003	AA132310	AC CORD ASSY ND	India model		1
14	302FV45040	2FV45040	AC CORD ASSY	Australian model		1
101	7BB700308H	BB105600	+BIND T.T S SCREW 3X8 SR			
102	7BB601306H	BB105790	+PAN M SCREW 3X6 R			

•Parts with Ref.No. indicate maintenance parts and the ones without it indicate out of the above.

•Parts with "-" are component parts or sub-assemblies of the assembly appearing immediately above them.

•Parts with ". •" are component parts or sub-assembly with ". •" appearing immediately above them.

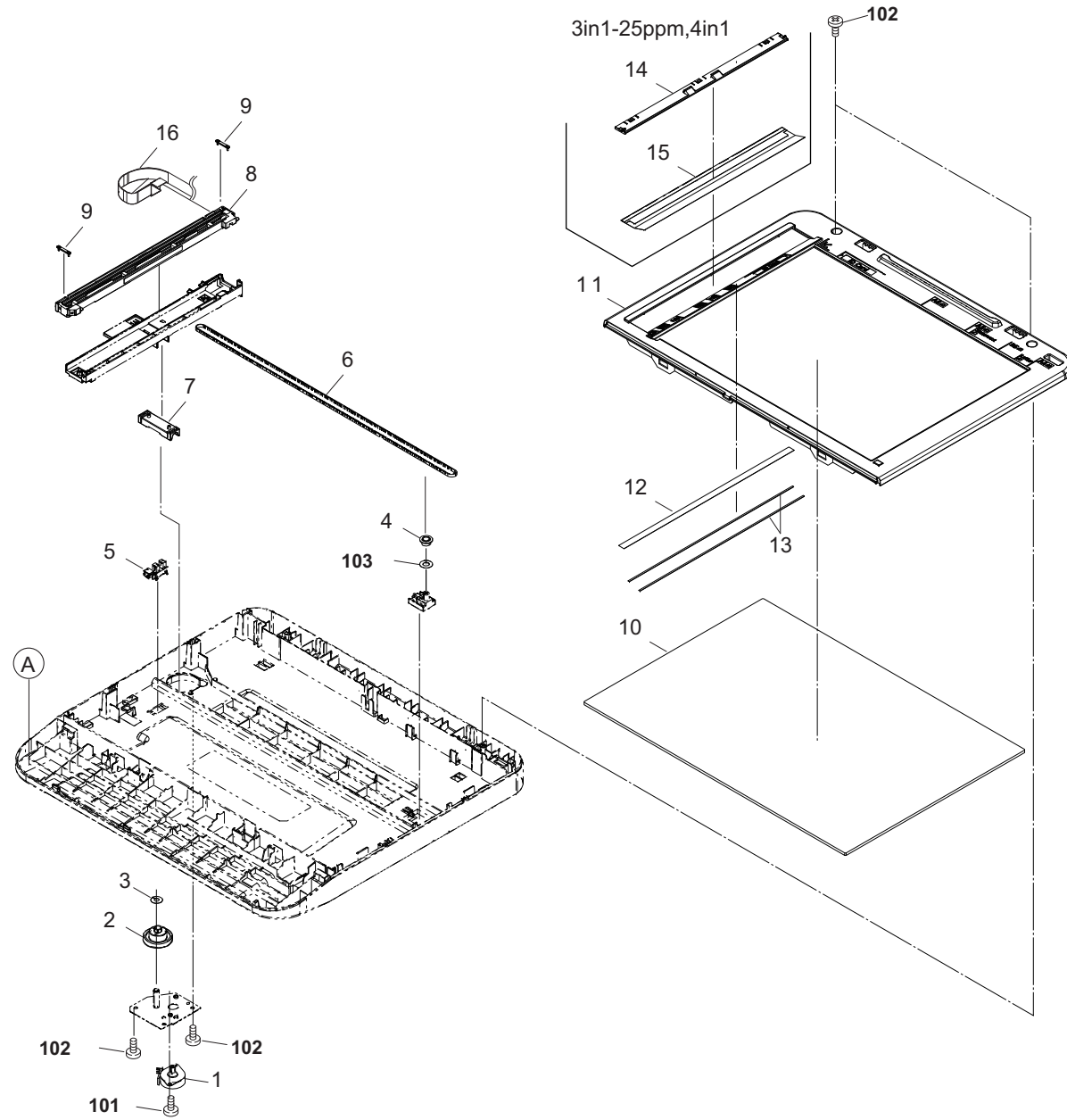


FIG. 9 Scanner Section

2M4/2M5/2M6/2M7

Ref. No.	Part.No.	Alternative.	Description	Notes	Quantity	
					120	220-240
1	302M494050	2M494050	PARTS MOTOR-PM ISU SP		1	1
2	302M417150	2M417150	GEAR Z73S-P27		1	1
3	302M417190	2M417190	STOPPER BELT		1	1
4	302M417180	2M417180	PULLEY TENSION		1	1
5	303M894260	3M894260	PARTS SENSOR OPT SP		1	1
6	302M417160	2M417160	BELT ISU		1	1
7	302M417100	2M417100	SLIDER SHAFT		1	1
8	302M494060	2M494060	PARTS SENSOR A4 CIS SP		1	1
9	302M417120	2M417120	SLIDER ISU		2	2
10	302M417030	2M417030	CONTACT-GLASS		1	1
11	302M417020	2M417020	FRAME ISU TOP		1	1
11	302M417240	2M417240	FRAME ISU TOP	Chinese model		1
12	302M417210	2M417210	STANDARD PLATE SHADING		1	1
13	302M517040	2M517040	TAPE CONTACT GLASS A		2	2
14	302M517050	2M517050	HOLDER SHEET DP	3in1-25ppm,4in1	1	1
15	302M517020	2M517020	SHEET DP	3in1-25ppm,4in1	1	1
16	302M446020	2M446020	CONN.CORD ASSY S03770		1	1
101	7BB700306H	BB105590	+BIND T.T S SCREW 3X6 SR			
102	7BB200308H	BB105660	+BIND T.T P SCREW 3X8			
103	C2893960	C2893960	SHIM 6.2-13-0.13T			

•Parts with Ref.No. indicate maintenance parts and the ones without it indicate out of the above.

•Parts with "\*" are component parts or sub-assemblies of the assembly appearing immediately above them.  
 •Parts with "• •" are component parts or sub-assembly with "\*" appearing immediately above them.

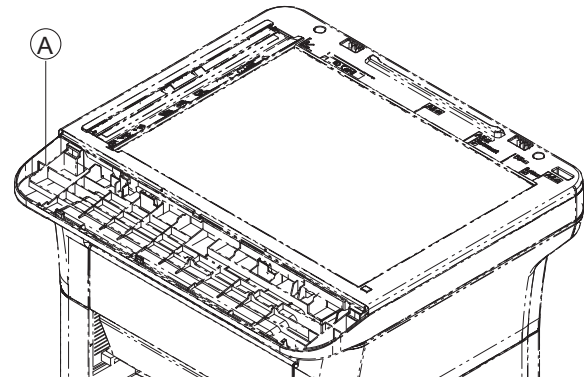
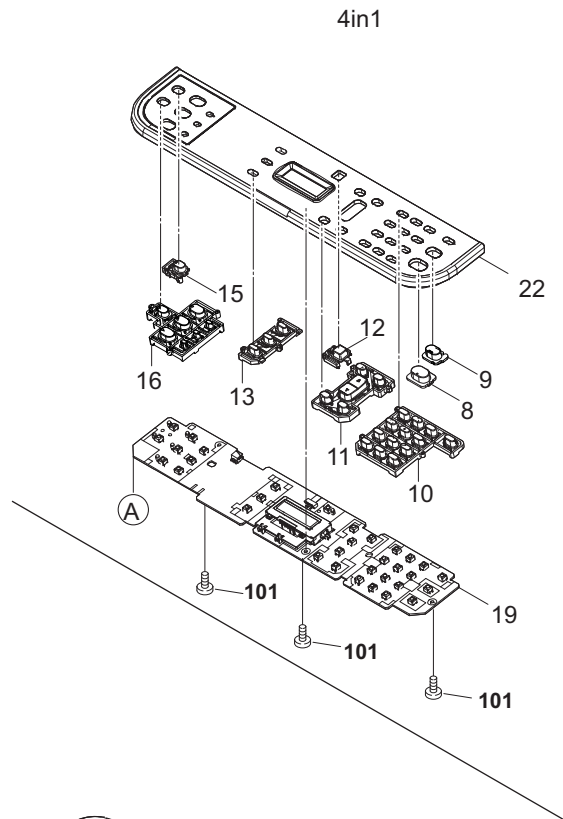
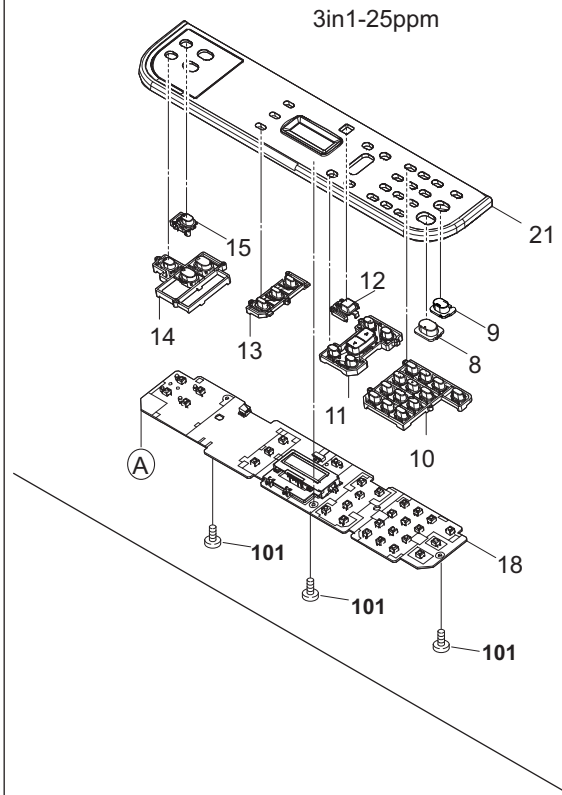
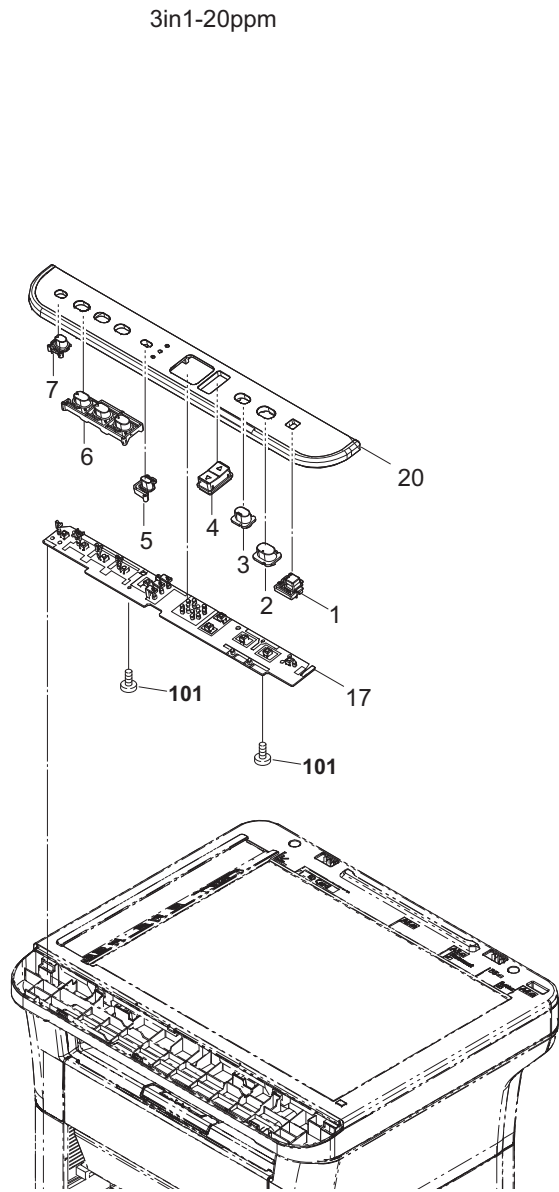


FIG. 10 Operation Section

2M4/2M5/2M6/2M7

Ref. No.	Part.No.	Alternative.	Description	Notes	Quantity	
					120	220-240
1	302M405100	2M405100	KEY ECO	3in1-20ppm	1	1
2	302M405020	2M405020	KEY START A	3in1-20ppm	1	1
3	302M405030	2M405030	KEY STOP A	3in1-20ppm	1	1
4	302M405040	2M405040	KEY UP DOWN	3in1-20ppm	1	1
5	302M405130	2M405130	KEY PROGRAM A	3in1-20ppm	1	1
6	302M405050	2M405050	KEY SELECT A	3in1-20ppm	1	1
7	302M405140	2M405140	KEY SELECT D	3in1-20ppm	1	1
8	302M505130	2M505130	KEY START B	3in1-25ppm,4in1	1	1
9	302M505140	2M505140	KEY STOP B	3in1-25ppm,4in1	1	1
10	302M505060	2M505060	KEY 10	3in1-25ppm,4in1	1	1
11	302M505070	2M505070	KEY MENU	3in1-25ppm,4in1	1	1
12	302M505170	2M505170	KEY ECO B	3in1-25ppm,4in1	1	1
13	302M505150	2M505150	KEY PROGRAM B	3in1-25ppm,4in1	1	1
14	302M605020	2M605020	KEY SELECT C	3in1-25ppm	1	1
15	302M505160	2M505160	KEY SELECT C	3in1-25ppm,4in1	1	1
16	302M505020	2M505020	KEY SELECT B	4in1	1	1
17	302M494040	2M494040	PARTS PWB ASSY PANEL SP	3in1-20ppm	1	1
18	302M694030	2M694030	PARTS PWB ASSY LCDCONT SP	3in1-25ppm	1	1
19	302M594070	2M594070	PARTS PWB ASSY LCDCONT SP	4in1	1	1
20	302M405010	2M405010	COVER OPERATION A	3in1-20ppm		1
20	302M405160	2M405160	COVER OPERATION A UX	3in1-20ppm	1	
20	302M405170	2M405170	COVER OPERATION A KS	3in1-20ppm-Chinese model		1
20	302M405270	2M405270	COVER OPERATION A NL	3in1-20ppm-Western european model		1
21	302M605010	2M605010	COVER OPERATION C	3in1-25ppm		1
21	302M605030	2M605030	COVER OPERATION C UX	3in1-25ppm	1	
21	302M605040	2M605040	COVER OPERATION C KS	3in1-25ppm-Chinese model		1
22	302M505010	2M505010	COVER OPERATION B	4in1-20ppm		1
22	302M505200	2M505200	COVER OPERATION B UX	4in1-20ppm	1	
22	302M505210	2M505210	COVER OPERATION B KS	4in1-20ppm-Chinese model		1
22	302M505300	2M505300	COVER OPERATION B NL	4in1-20ppm-Western european model		1
22	302M705010	2M705010	COVER OPERATION B	4in1-25ppm		1
22	302M705020	2M705020	COVER OPERATION B UX	4in1-25ppm	1	
22	302M705030	2M705030	COVER OPERATION B KS	4in1-25ppm-Chinese model		1
22	302M705110	2M705110	COVER OPERATION B NL	4in1-20ppm-Western european model		1
101	7BB200308H	BB105660	+BIND T.T P SCREW 3X8			

•Parts with Ref.No. indicate maintenance parts and the ones without it indicate out of the above.

•Parts with "\*" are component parts or sub-assemblies of the assembly appearing immediately above them.

•Parts with "•" are component parts or sub-assembly with "•" appearing immediately above them.

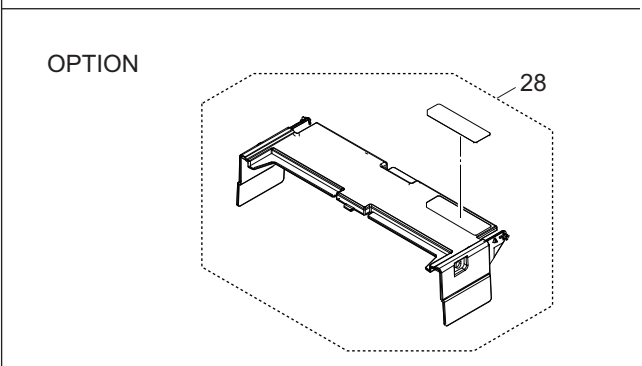
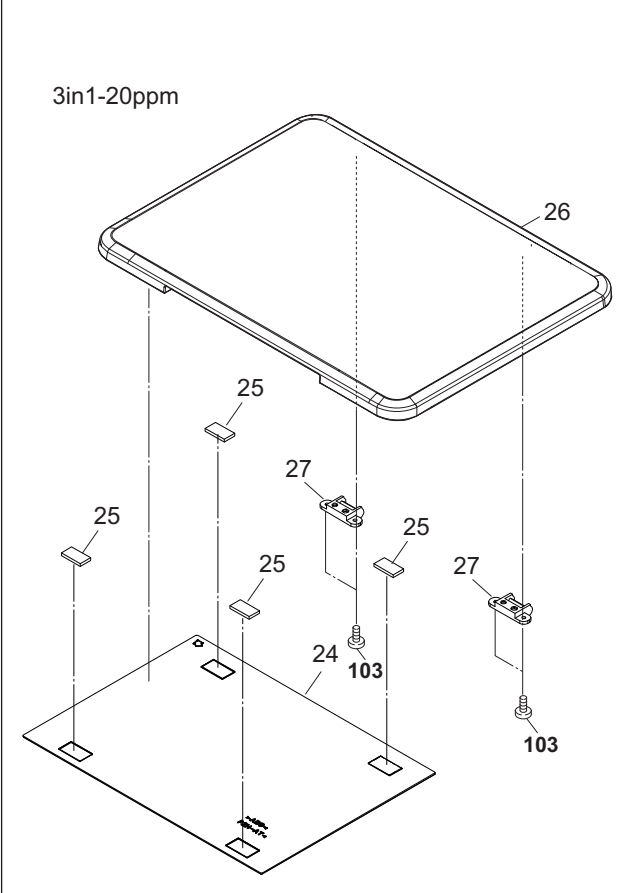
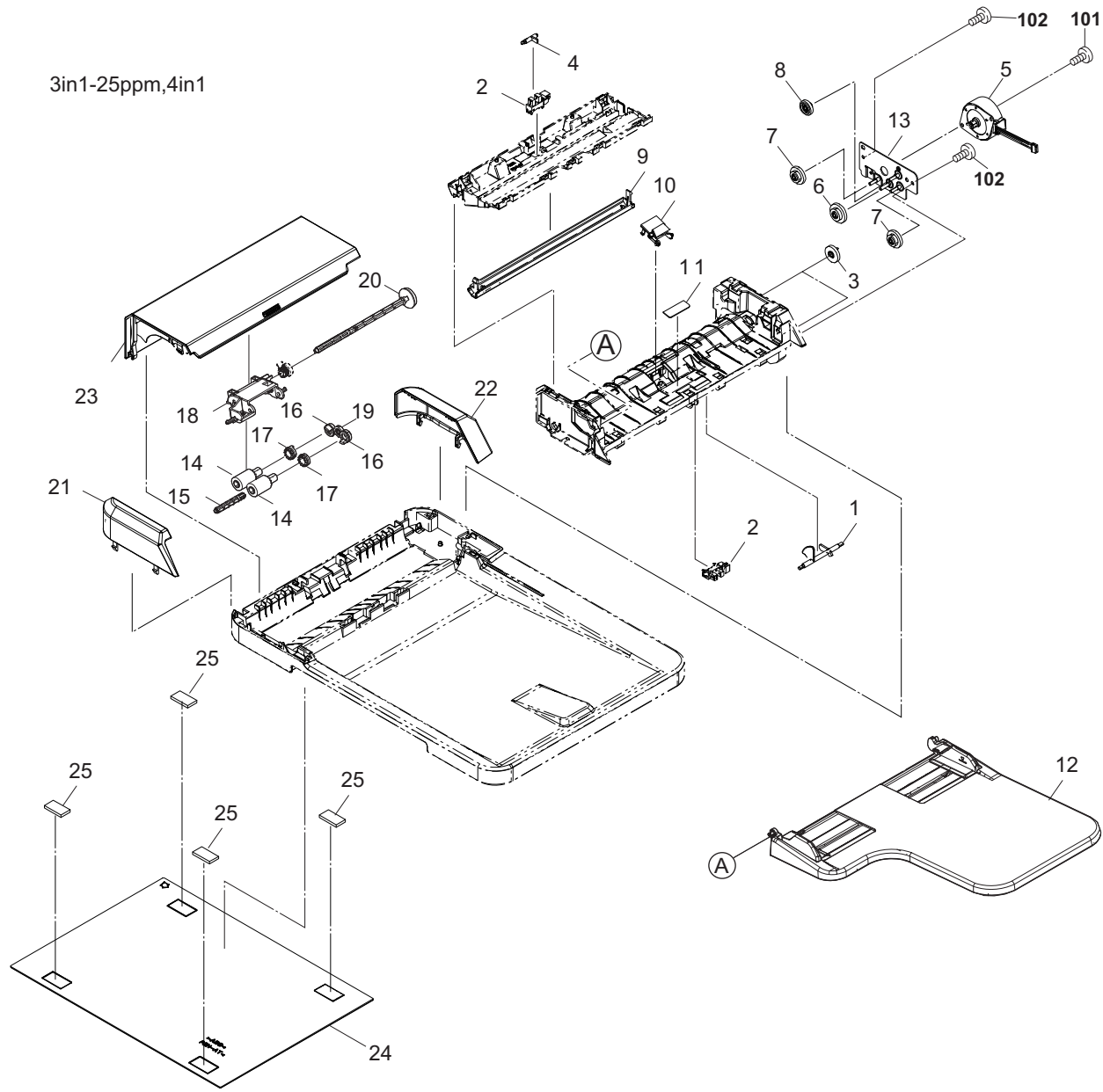


FIG. 11 Document Processor & Original Cover & Options

2M4/2M5/2M6/2M7

Ref. No.	Part.No.	Alternative.	Description	Notes	Quantity	
					120	220-240
1	302M518170	2M518170	ACTUATOR SET	3in1-25ppm,4in1	1	1
2	303M894260	3M894260	PARTS SENSOR OPT SP	3in1-25ppm,4in1	2	2
3	302M518910	2M518910	GEAR CONVEYING Z32S	3in1-25ppm,4in1	2	2
4	302M518240	2M518240	ACTUATOR TIMING	3in1-25ppm,4in1	1	1
5	302M544010	2M544010	MOTOR-PM	3in1-25ppm,4in1	1	1
6	302M518930	2M518930	GEAR Z44R-Z21S	3in1-25ppm,4in1	1	1
7	302M518920	2M518920	GEAR Z41S-Z21S	3in1-25ppm,4in1	2	2
8	302M518940	2M518940	GEAR Z32S	3in1-25ppm,4in1	1	1
9	302M518520	2M518520	GUIDE READING	3in1-25ppm,4in1	1	1
10	302M594010	2M594010	PARTS SEPARATION ASSY SP	3in1-25ppm,4in1	1	1
11	302M518160	2M518160	FELT PF	3in1-25ppm,4in1	1	1
12	302M594020	2M594020	PARTS TABLE ASSY SP	3in1-25ppm,4in1	1	1
13	302M518310	2M518310	MOUNT MOTOR	3in1-25ppm,4in1	1	1
14	302M518720	2M518720	ROLLER PF	3in1-25ppm,4in1	2	2
15	302M518710	2M518710	SHAFT PICK	3in1-25ppm,4in1	1	1
16	302M518760	2M518760	GEAR Z22S FEED JOINT	3in1-25ppm,4in1	2	2
17	302M518790	2M518790	COUPLING FEED JOINT	3in1-25ppm,4in1	2	2
18	302M518750	2M518750	HOLDER PF	3in1-25ppm,4in1	1	1
19	302M518730	2M518730	GEAR Z22S PF IDLE	3in1-25ppm,4in1	1	1
20	302M518740	2M518740	SHAFT PF	3in1-25ppm,4in1	1	1
21	302M518410	2M518410	COVER FRONT	3in1-25ppm,4in1	1	1
22	302M518420	2M518420	COVER REAR	3in1-25ppm,4in1	1	1
23	302M518430	2M518430	COVER PF	3in1-25ppm,4in1	1	1
24	302M518040	2M518040	PLATE ORIGINAL		1	1
25	302M518050	2M518050	SPONGE ORIGINAL PLATE		4	4
26	302M417220	2M417220	COVER PLATEN	3in1-20ppm	1	1
27	302M417230	2M417230	HINGE UPPER A	3in1-20ppm	2	2
28	302M294330	2M294330	PARTS JOINT COVER TRAY SET SP		1	1
101	7BB700306H	BB105590	+BIND T.T S SCREW 3X6 SR			
102	7BB200308H	BB105660	+BIND T.T P SCREW 3X8			
103	7BB202308H	BB105690	+TP-FLAT T.T P SCREW 3X8			

•Parts with Ref.No. indicate maintenance parts and the ones without it indicate out of the above.

•Parts with "-" are component parts or sub-assemblies of the assembly appearing immediately above them.

•Parts with "•" are component parts or sub-assembly with "•" appearing immediately above them.



FIG. 12 Maintenance Kits

2M4/2M5/2M6/2M7

Ref. No.	Part.No.	Alternative.	Description	Notes	Quantity	
					120	220-240
	1702M76UX0	072M76UX	MK-1112/MAINTENANCE KIT PARTS ROLLER FEED ASSY SP DK-1110 WT-1110 DV-1110 PARTS FRAME FEED BOTTOM ASSY SP	OPTION	1 1 1 1 1 1	
	1702M75NX0	072M75NX	PARTS ROLLER TRANSFER I SP MK-1110/MAINTENANCE KIT PARTS ROLLER FEED ASSY SP DK-1110 WT-1110 DV-1110 PARTS FRAME FEED BOTTOM ASSY SP	OPTION	1	1 1 1 1
	1702M75KS0	072M75KS	PARTS ROLLER TRANSFER C SP MK-1110/MAINTENANCE KIT PARTS ROLLER FEED ASSY SP DK-1110 WT-1110 DV-1110 PARTS FRAME FEED BOTTOM ASSY SP PARTS ROLLER TRANSFER C SP	OPTION-Chinese model		1 1 1 1 1 1 1

•Parts with Ref.No. indicate maintenance parts and the ones without it indicate out of the above.

•Parts with "\*" are component parts or sub-assemblies of the assembly appearing immediately above them.  
•Parts with "• •" are component parts or sub-assembly with "\*" appearing immediately above them.

INDEX

2M4/2M5/2M6/2M7

Part.No.	Alternative.	Description	Fig.No.
1702M75KS0	072M75KS	MK-1110/MAINTENANCE KIT	12
1702M75NX0	072M75NX	MK-1110/MAINTENANCE KIT	12
1702M76UX0	072M76UX	MK-1112/MAINTENANCE KIT	12
2BG22990	2BG22990	CUT WASHER 4	2
302B700780	2B700780	GEAR MANUAL	2
302F929140	2F929140	BUSH DU	3
302FV45020	2FV45020	AC CORD ASSY	8
302FV45040	2FV45040	AC CORD ASSY	8
302G634070	2G634070	LABEL ENERGY STAR	1
302GR44150	2GR44150	SOLENOID TONER	7
302HG12310	2HG12310	CUT WASHER 4	3
302HN24060	2HN24060	GEAR Z19L REG REAR	7
302HN25450	2HN25450	BUSH EXIT	3
302HN31650	2HN31650	SPRING INPUT MPF	3
302HN44010	2HN44010	FAN MOTOR	8
302HN94140	2HN94140	SOLENOID FD ASSY SP	7
302KK04570	2KK04570	CUT WASHER 5	3
302M202470	2M202470	LEVER INTERLOCK C	2
302M202750	2M202750	GEAR MANUAL	2
302M202850	2M202850	FOOT	2
302M204020	2M204020	COVER RIGHT	1
302M204030	2M204030	COVER LEFT	1
302M204060	2M204060	COVER FD	1
302M204100	2M204100	KEY POWER SWITCH	1
302M209110	2M209110	COVER TRAY	2
302M209180	2M209180	COVER TRAY B	2
302M213060	2M213060	CAP WASTE	5
302M224040	2M224040	GEAR REGIST LOW Z23R	3
302M224050	2M224050	GEAR REGIST UP Z15L	2
302M224060	2M224060	BUSH REGIST L	3
302M224070	2M224070	BUSH REGIST R	3
302M224140	2M224140	GEAR TRANS Z17S	3
302M224150	2M224150	BUSH TRANS L	3
302M224160	2M224160	BUSH TRANS R	3
302M224210	2M224210	ACTUATOR REGIST	3
302M231050	2M231050	GEAR Z68L-Z20R	7
302M231060	2M231060	GEAR Z85L-Z38L	7
302M231070	2M231070	GEAR Z68L-Z34R	7
302M231080	2M231080	GEAR Z70L-Z29R	7
302M231090	2M231090	GEAR Z34L	7
302M231100	2M231100	GEAR Z47R	7
302M231110	2M231110	GEAR Z23S	7
302M231120	2M231120	GEAR Z82L-Z40L	7
302M231130	2M231130	GEAR Z68R	7
302M231140	2M231140	GEAR Z53L-Z24L	7
302M231150	2M231150	GEAR Z31R	7
302M231170	2M231170	GEAR A Z38S	3
302M231180	2M231180	GEAR B Z38S	3
302M231270	2M231270	GEAR Z57L-Z36R	7
302M231280	2M231280	GEAR Z19S	7

Part.No.	Alternative.	Description	Fig.No.
302M231290	2M231290	CAP GEAR	7
302M231300	2M231300	SPRING GEAR B	7
302M293010	2M293010	DK-1110	5
302M293020	2M293020	DV-1110	4
302M293030	2M293030	WT-1110	5
302M293040	2M293040	FK-1110(E)	6
302M293050	2M293050	FK-1110(U)	6
302M293060	2M293060	LK-1110	2
302M294020	2M294020	PARTS COVER FRONT ASSY SP	1
302M294030	2M294030	PARTS TE SENSOR ASSY SP	8
302M294040	2M294040	PARTS COVER REAR L ASSY SP	3
302M294050	2M294050	PARTS FRAME FEED BOTTOM ASSY SP	2
302M294060	2M294060	PARTS TRAY FRONT ASSY SP	1
302M294110	2M294110	PARTS PWB ASSY CONTAINER CONNECT SP	8
302M294120	2M294120	PARTS PWB ASSY ERASER SP	8
302M294130	2M294130	PARTS PWB ASSY THERMISTOR SP	8
302M294140	2M294140	PARTS SWITCHING REGULATOR 230V SP	8
302M294150	2M294150	PARTS SWITCHING REGULATOR 120V SP	8
302M294160	2M294160	PARTS HIGH VOLTAGE UNIT SP	8
302M294190	2M294190	PARTS ROLLER REGIST LOW SP	3
302M294200	2M294200	PARTS ROLLER FEED ASSY SP	3
302M294240	2M294240	PARTS ROLLER TRANSFER ASSY I SP	3
302M294250	2M294250	PARTS ROLLER TRANSFER ASSY C SP	3
302M294330	2M294330	PARTS JOINT COVER TRAY SET SP	11
302M29C010	2M29C010	DK-1110	5
302M29C020	2M29C020	DV-1110	4
302M29C040	2M29C040	FK-1110(E)	6
302M309010	2M309010	COVER TRAY C	2
302M309020	2M309020	COVER TRAY	2
302M329040	2M329040	GEAR Z22S	3
302M329050	2M329050	GEAR Z23R-Z22S	3
302M329070	2M329070	GEAR DU Z22S	3
302M331020	2M331020	GEAR Z57L-Z47R	7
302M331030	2M331030	GEAR Z39L-Z24L	7
302M331040	2M331040	GEAR Z66R-Z35S	7
302M331050	2M331050	GEAR Z34S	7
302M331060	2M331060	GEAR A Z14S	7
302M331070	2M331070	GEAR B Z14S	7
302M331080	2M331080	GEAR Z14S	7
302M331090	2M331090	GEAR Z42S-Z20S	7
302M331100	2M331100	GEAR Z45S	7
302M331110	2M331110	GEAR Z28S	7
302M331140	2M331140	SPRING CLUTCH	7
302M393010	2M393010	FK-1120(E)	6
302M393020	2M393020	FK-1120(U)	6
302M393030	2M393030	LK-1120	2
302M394010	2M394010	PARTS COVER REAR H ASSY SP	3
302M394030	2M394030	PARTS MOTOR DC ASSY SP	7
302M39C010	2M39C010	FK-1120(E)	6
302M404020	2M404020	COVER RIGHT UPPER	1

Part.No.	Alternative.	Description	Fig.No.
302M404030	2M404030	COVER LEFT UPPER	1
302M404040	2M404040	COVER REAR UPPER R	1
302M404050	2M404050	COVER REAR UPPER L	1
302M405010	2M405010	COVER OPERATION A	10
302M405020	2M405020	KEY START A	10
302M405030	2M405030	KEY STOP A	10
302M405040	2M405040	KEY UP DOWN	10
302M405050	2M405050	KEY SELECT A	10
302M405100	2M405100	KEY ECO	10
302M405130	2M405130	KEY PROGRAM A	10
302M405140	2M405140	KEY SELECT D	10
302M405160	2M405160	COVER OPERATION A UX	10
302M405170	2M405170	COVER OPERATION A KS	10
302M405270	2M405270	COVER OPERATION A NL	10
302M417020	2M417020	FRAME ISU TOP	9
302M417030	2M417030	CONTACT-GLASS	9
302M417100	2M417100	SLIDER SHAFT	9
302M417120	2M417120	SLIDER ISU	9
302M417150	2M417150	GEAR Z73S-P27	9
302M417160	2M417160	BELT ISU	9
302M417180	2M417180	PULLEY TENSION	9
302M417190	2M417190	STOPPER BELT	9
302M417210	2M417210	STANDARD PLATE SHADING	9
302M417220	2M417220	COVER PLATEN	11
302M417230	2M417230	HINGE UPPER A	11
302M417240	2M417240	FRAME ISU TOP	9
302M446020	2M446020	CONN.CORD ASSY S03770	9
302M446040	2M446040	CONN.CORD ASSY S03790	8
302M446050	2M446050	CONN.CORD ASSY S03791	8
302M494010	2M494010	PARTS COVER TOP ASSY SP	1
302M494020	2M494020	PARTS TRAY FRONT ASSY SP CN	1
302M494030	2M494030	PARTS PWB ASSY MAIN SP	8
302M494040	2M494040	PARTS PWB ASSY PANEL SP	10
302M494050	2M494050	PARTS MOTOR-PM ISU SP	9
302M494060	2M494060	PARTS SENSOR A4 CIS SP	9
302M494070	2M494070	PARTS PWB ASSY MAIN SP RU	8
302M494080	2M494080	PARTS PWB ASSY MAIN SP AO	8
302M494090	2M494090	PARTS PWB ASSY MAIN SP CN	8
302M494110	2M494110	PARTS PWB ASSY MAIN SP EU	8
302M505010	2M505010	COVER OPERATION B	10
302M505020	2M505020	KEY SELECT B	10
302M505060	2M505060	KEY 10	10
302M505070	2M505070	KEY MENU	10
302M505130	2M505130	KEY START B	10
302M505140	2M505140	KEY STOP B	10
302M505150	2M505150	KEY PROGRAM B	10
302M505160	2M505160	KEY SELECT C	10
302M505170	2M505170	KEY ECO B	10
302M505200	2M505200	COVER OPERATION B UX	10
302M505210	2M505210	COVER OPERATION B KS	10

Part.No.	Alternative.	Description	Fig.No.
302M505300	2M505300	COVER OPERATION B NL	10
302M517020	2M517020	SHEET DP	9
302M517040	2M517040	TAPE CONTACT GLASS A	9
302M517050	2M517050	HOLDER SHEET DP	9
302M518040	2M518040	PLATE ORIGINAL	11
302M518050	2M518050	SPONGE ORIGINAL PLATE	11
302M518160	2M518160	FELT PF	11
302M518170	2M518170	ACTUATOR SET	11
302M518240	2M518240	ACTUATOR TIMING	11
302M518310	2M518310	MOUNT MOTOR	11
302M518410	2M518410	COVER FRONT	11
302M518420	2M518420	COVER REAR	11
302M518430	2M518430	COVER PF	11
302M518520	2M518520	GUIDE READING	11
302M518710	2M518710	SHAFT PICK	11
302M518720	2M518720	ROLLER PF	11
302M518730	2M518730	GEAR Z22S PF IDLE	11
302M518740	2M518740	SHAFT PF	11
302M518750	2M518750	HOLDER PF	11
302M518760	2M518760	GEAR Z22S FEED JOINT	11
302M518790	2M518790	COUPLING FEED JOINT	11
302M518910	2M518910	GEAR CONVEYING Z32S	11
302M518920	2M518920	GEAR Z41S-Z21S	11
302M518930	2M518930	GEAR Z44R-Z21S	11
302M518940	2M518940	GEAR Z32S	11
302M544010	2M544010	MOTOR-PM	11
302M593010	2M593010	FK-1111(E)	6
302M593020	2M593020	FK-1111(U)	6
302M594010	2M594010	PARTS SEPARATION ASSY SP	11
302M594020	2M594020	PARTS TABLE ASSY SP	11
302M594040	2M594040	PARTS TRAY FRONT ASSY SP CN	1
302M594050	2M594050	PARTS PWB ASSY MAIN SP	8
302M594060	2M594060	PARTS PWB ASSY MAIN SP EU	8
302M594070	2M594070	PARTS PWB ASSY LCDCONT SP	10
302M594080	2M594080	PARTS FAX UNIT E SP	8
302M594090	2M594090	PARTS FAX UNIT U SP	8
302M594100	2M594100	PARTS PWB ASSY MAIN SP RU	8
302M594110	2M594110	PARTS PWB ASSY MAIN SP AO	8
302M594120	2M594120	PARTS PWB ASSY MAIN SP CN	8
302M594140	2M594140	PARTS PWB ASSY MAIN SP AU	8
302M59C010	2M59C010	FK-1111(E)	6
302M605010	2M605010	COVER OPERATION C	10
302M605020	2M605020	KEY SELECT C	10
302M605030	2M605030	COVER OPERATION C UX	10
302M605040	2M605040	COVER OPERATION C KS	10
302M694010	2M694010	PARTS TRAY FRONT ASSY SP CN	1
302M694020	2M694020	PARTS PWB ASSY MAIN SP	8
302M694030	2M694030	PARTS PWB ASSY LCDCONT SP	10
302M694040	2M694040	PARTS PWB ASSY MAIN SP RU	8
302M694050	2M694050	PARTS PWB ASSY MAIN SP AO	8

Part.No.	Alternative.	Description	Fig.No.
302M694060	2M694060	PARTS PWB ASSY MAIN SP CN	8
302M705010	2M705010	COVER OPERATION B	10
302M705020	2M705020	COVER OPERATION B UX	10
302M705030	2M705030	COVER OPERATION B KS	10
302M705110	2M705110	COVER OPERATION B NL	10
302M794010	2M794010	PARTS TRAY FRONT ASSY SP CN	1
302M794020	2M794020	PARTS PWB ASSY MAIN SP	8
302M794030	2M794030	PARTS PWB ASSY MAIN SP EU	8
302M794040	2M794040	PARTS PWB ASSY MAIN SP RU	8
302M794050	2M794050	PARTS PWB ASSY MAIN SP AO	8
302M794060	2M794060	PARTS PWB ASSY MAIN SP CN	8
302M794080	2M794080	PARTS PWB ASSY MAIN SP AU	8
303M894260	3M894260	PARTS SENSOR OPT SP	3,9,11
7AAACCCN+06H001	AA131920	AC CORD ASSY CN	8
7AAACCND+06H003	AA132310	AC CORD ASSY ND	8
7AAACCCUS+10H001	AA068380	AC CORD ASSY US	8

Part.No.	Alternative.	Description	Fig.No.

**KYOCERA Document Solutions America, Inc.**

**Headquarters**

225 Sand Road,  
Fairfield, New Jersey 07004-0008, USA  
Phone: +1-973-808-8444  
Fax: +1-973-882-6000

**Latin America**

8240 NW 52nd Terrace Dawson Building, Suite 100  
Miami, Florida 33166, USA  
Phone: +1-305-421-6640  
Fax: +1-305-421-6666

**KYOCERA Document Solutions Canada, Ltd.**

6120 Kestrel Rd., Mississauga, ON L5T 1S8,  
Canada  
Phone: +1-905-670-4425  
Fax: +1-905-670-8116

**KYOCERA Document Solutions  
Mexico, S.A. de C.V.**

Calle Arquimedes No. 130, 4 Piso, Colonia Polanco  
Chapultepec, Delegacion Miguel Hidalgo,  
Distrito Federal, C.P. 11560, México  
Phone: +52-555-383-2741  
Fax: +52-555-383-7804

**KYOCERA Document Solutions Brazil, Ltda.**

Av.Tambore,1180 Mod.B-09 CEP 06460-000  
Tambore-Barueri-SP, Brazil  
Phone: +55-11-4195-8496  
Fax: +55-11-4195-6167

**KYOCERA Document Solutions  
Australia Pty. Ltd.**

Level 3, 6-10 Talavera Road North Ryde N.S.W, 2113,  
Australia  
Phone: +61-2-9888-9999  
Fax: +61-2-9888-9588

**KYOCERA Document Solutions  
New Zealand Ltd.**

1-3 Parkhead Place, Albany, Auckland 1330,  
New Zealand  
Phone: +64-9-415-4517  
Fax: +64-9-415-4597

**KYOCERA Document Solutions Asia Limited**

16/F.,Mita Centre, 552-566, Castle Peak Road  
Tsuenwan, NT, Hong Kong  
Phone: +852-2610-2181  
Fax: +852-2610-2063

**KYOCERA Document Solutions  
(Thailand) Corp., Ltd.**

335 Ratchadapisek Road, Bangsue, Bangkok 10800,  
Thailand  
Phone: +66-2-586-0333  
Fax: +66-2-586-0278

**KYOCERA Document Solutions  
Singapore Pte. Ltd.**

12 Tai Seng Street #04-01A,  
Luxasia Building, Singapore 534118  
Phone: +65-6741-8733  
Fax: +65-6748-3788

**KYOCERA Document Solutions  
Hong Kong Limited**

16/F.,Mita Centre, 552-566, Castle Peak Road  
Tsuenwan, NT, Hong Kong  
Phone: +852-2429-7422  
Fax: +852-2423-2159

**KYOCERA Document Solutions  
Taiwan Corporation**

6F., No.37, Sec. 3, Minquan E. Rd.,  
Zhongshan Dist., Taipei 104, Taiwan R.O.C.  
Phone: +886-2-2507-6709  
Fax: +886-2-2507-8432

**KYOCERA Document Solutions Korea Co., Ltd.**

18F, Kangnam bldg, 1321-1,  
Seocho-Dong, Seocho-Gu, Seoul, Korea  
Phone: +822-6933-4050  
Fax: +822-747-0084

**KYOCERA Document Solutions  
India Private Limited**

First Floor, ORCHID CENTRE  
Sector-53, Golf Course Road, Gurgaon 122 002,  
India  
Phone: +91-0124-4671000  
Fax: +91-0124-4671001

**KYOCERA Document Solutions Europe B.V.**

Bloemlaan 4, 2132 NP Hoofddorp,  
The Netherlands  
Phone: +31-20-654-0000  
Fax: +31-20-653-1256

**KYOCERA Document Solutions Nederland B.V.**

Beechavenue 25, 1119 RA Schiphol-Rijk,  
The Netherlands  
Phone: +31-20-5877200  
Fax: +31-20-5877260

**KYOCERA Document Solutions (U.K.) Limited**

8 Beacontree Plaza,  
Gillette Way Reading, Berkshire RG2 0BS,  
United Kingdom  
Phone: +44-118-931-1500  
Fax: +44-118-931-1108

**KYOCERA Document Solutions Italia S.p.A.**

Via Verdi, 89/91 20063 Cernusco s/N.(MI),  
Italy  
Phone: +39-02-921791  
Fax: +39-02-92179-600

**KYOCERA Document Solutions Belgium N.V.**

Sint-Martinusweg 199-201 1930 Zaventem,  
Belgium  
Phone: +32-2-7209270  
Fax: +32-2-7208748

**KYOCERA Document Solutions France S.A.S.**

Espace Technologique de St Aubin  
Route de l'Orme 91195 Gif-sur-Yvette CEDEX,  
France  
Phone: +33-1-69852600  
Fax: +33-1-69853409

**KYOCERA Document Solutions Espana, S.A.**

Edificio Kyocera, Avda. de Manacor No.2,  
28290 Las Matas (Madrid), Spain  
Phone: +34-91-6318392  
Fax: +34-91-6318219

**KYOCERA Document Solutions Finland Oy**

Atomitie 5C, 00370 Helsinki,  
Finland  
Phone: +358-9-47805200  
Fax: +358-9-47805390

**KYOCERA Document Solutions****Europe B.V., Amsterdam (NL) Zürich Branch**

Hohlstrasse 614, 8048 Zürich,  
Switzerland  
Phone: +41-44-9084949  
Fax: +41-44-9084950

**KYOCERA Document Solutions****Deutschland GmbH**

Otto-Hahn-Strasse 12, 40670 Meerbusch,  
Germany  
Phone: +49-2159-9180  
Fax: +49-2159-918100

**KYOCERA Document Solutions Austria GmbH**

Eduard-Kittenberger-Gasse 95, 1230 Vienna,  
Austria  
Phone: +43-1-863380  
Fax: +43-1-86338-400

**KYOCERA Document Solutions Nordic AB**

Esbogatan 16B 164 75 Kista, Sweden  
Phone: +46-8-546-550-00  
Fax: +46-8-546-550-10

**KYOCERA Document Solutions Norge NUF**

Postboks 150 Oppsal, 0619 Oslo,  
Norway  
Phone: +47-22-62-73-00  
Fax: +47-22-62-72-00

**KYOCERA Document Solutions Danmark A/S**

Ejby Industrivej 60, DK-2600 Glostrup,  
Denmark  
Phone: +45-70223880  
Fax: +45-45765850

**KYOCERA Document Solutions Portugal Lda.**

Rua do Centro Cultural, 41 (Alvalade) 1700-106 Lisboa,  
Portugal  
Phone: +351-21-843-6780  
Fax: +351-21-849-3312

**KYOCERA Document Solutions****South Africa (Pty) Ltd.**

49 Kyalami Boulevard,  
Kyalami Business Park 1685 Midrand, South Africa  
Phone: +27-11-540-2600  
Fax: +27-11-466-3050

**KYOCERA Document Solutions Russia LLC**

Botanichesky pereulok 5, Moscow, 129090,  
Russia  
Phone: +7(495)741-0004  
Fax: +7(495)741-0018

**KYOCERA Document Solutions Middle East**

Dubai Internet City, Bldg. 17,  
Office 157 P.O. Box 500817, Dubai,  
United Arab Emirates  
Phone: +971-04-433-0412

**KYOCERA Document Solutions Inc.**

2-28, 1-chome, Tamatsukuri, Chuo-ku  
Osaka 540-8585, Japan  
Phone: +81-6-6764-3555  
<http://www.kyoceradocumentsolutions.com>