

PARTS CATALOG

iPF9100/9000S/9000

Canon

Aug 27 2010

PREFACE

This Parts Catalog contains listings of parts used

Diagrams are provided with the listings to aid the service technician in identifying clearly, the item to be ordered.

Whenever ordering parts, consult this Parts Catalog for all of the information pertaining to each item. Be sure to include, in the Parts Request, the full item description, the item part number, and the quantity.

COPYRIGHT (C) 1999 CANON INC.

Use of this manual should be strictly supervised to avoid disclosure of confidential information.

Contents

NUMERICAL INDEX

iPF9100/9000S/9000(Numerical Index)..... 1-1

iPF9100/9000S/9000(Parts Catalog)

01	PRINTER & ACCESSORIES	2-1
02	COVERS (1)	2-3
03	COVERS (2)	2-5
04	ELECTRICAL PART	2-7
05	INK TANK & PURGE UNIT	2-9
06	CARRIAGE UNIT	2-11
07	FEED MOTOR ASS'Y	2-15
08	AIR FLOW FAN UNIT	2-18
09	PINCH ROLLER UNIT	2-20
10	PLATEN & FEED ROLLER	2-21
11	LINEAR SCALE	2-23
12	MEDIA TAKE-UP UNIT	2-24
13	STAND & BASKET UNIT	2-27
14	TOOL	2-29

NUMERICAL INDEX

iPF9100/9000S/9000(Numerical Index)

PARTS NUMBER	FIGURE & KEY NO.	PARTS NUMBER	FIGURE & KEY NO.	PARTS NUMBER	FIGURE & KEY NO.
CK-0551-020	14 - 2	QC1-7143-000	03 - 19	QC2-3138-000	06 - 15
CK-0562-000	14 - 3	QC1-7156-000	06 - 20	QC2-4116-000	13 - 9
FA3-8727-000	07 - 27	QC1-7237-000	08 - 7	QC2-4136-000	07 - 15
FA3-8727-000	10 - 21	QC1-7278-000	03 - 9	QC2-4350-000	13 - 2
FB1-0733-000	01 - 9	QC1-7303-000	06 - 42	QC2-4351-000	13 - 3
FH2-7092-020	01 - 18	QC1-7399-000	03 - 23	QC2-6025-000	13 - 7
FH7-5489-050	07 - 19	QC1-9198-000	08 - 10	QC2-6626-000	13 - 1
FS5-1189-000	07 - 34	QC2-0653-000	06 - 16	QC2-6657-020	03 - 3
NPN	01 -	QC2-0659-050	06 - 8	QC2-6658-000	02 - 1
NPN	01 - 1	QC2-0660-050	06 - 9	QC2-6659-000	02 - 2
NPN	01 - 2	QC2-0661-000	06 - 10	QC2-6660-000	03 - 7
NPN	01 - 2	QC2-0710-000	06 - 28	QC2-6679-000	02 - 18
NPN	01 - 2	QC2-2078-000	06 - 12	QC2-6712-000	06 - 31
NPN	01 - 2	QC2-2082-000	10 - 11	QC3-1883-000	11 - 2
NPN	01 - 2	QC2-2104-000	06 - 13	QE1-1048-000	09 - 4
NPN	01 - 2	QC2-2106-000	06 - 14	QE1-1063-000	07 - 17
NPN	01 - 2	QC2-2117-000	06 - 31	QE1-1270-000	06 - 44
NPN	01 - 2	QC2-2172-000	03 - 6	QE1-1495-000	12 - 28
NPN	01 - 2	QC2-2173-000	03 - 7	QE1-2304-000	12 - 29
NPN	01 - 2	QC2-2178-020	03 - 3	QE1-2334-000	01 - 19
NPN	01 - 2	QC2-2179-000	03 - 14	QE1-2691-000	06 - 46
NPN	01 - 2	QC2-2180-000	03 - 15	QH2-2732-000	01 - 16
NPN	02 -	QC2-2181-000	02 - 5	QK1-1387-000	08 - 11
NPN	03 -	QC2-2183-000	02 - 6	QK1-1392-000	01 - 13
NPN	04 -	QC2-2191-000	02 - 3	QK1-1393-000	01 - 12
NPN	05 -	QC2-2192-000	02 - 4	QK1-1394-000	01 - 11
NPN	06 -	QC2-2195-000	07 - 28	QK1-1395-000	01 - 15
NPN	07 -	QC2-2197-000	02 - 7	QK1-1396-000	01 - 17
NPN	08 -	QC2-2198-000	02 - 8	QK1-1441-000	01 - 14
NPN	09 -	QC2-2199-000	02 - 9	QK1-2091-000	06 - 39
NPN	10 -	QC2-2200-000	02 - 10	QK1-2758-000	06 - 39
NPN	11 -	QC2-2202-030	02 - 11	QK1-2868-000	06 - 48
NPN	12 -	QC2-2224-000	01 - 8	QK1-2896-000	06 - 48
NPN	13 -	QC2-2354-000	10 - 20	QK1-2908-000	12 - 1
NPN	14 -	QC2-2355-000	10 - 7	QK1-2912-000	04 - 3
QC1-6847-000	07 - 6	QC2-2356-000	10 - 17	QK1-2983-000	06 - 40
QC1-6921-000	10 - 10	QC2-2364-000	06 - 23	QK1-2984-000	06 - 41
QC1-6924-000	03 - 8	QC2-2365-000	06 - 24	QK1-2985-000	06 - 32
QC1-6925-000	03 - 11	QC2-2366-000	06 - 25	QL2-1104-000	06 - 33
QC1-6926-000	03 - 12	QC2-2399-000	12 - 5	QL2-1114-000	06 - 34
QC1-6927-000	03 - 13	QC2-2401-000	12 - 6	QL2-1649-000	06 - 42
QC1-6930-000	02 - 1	QC2-2402-000	12 - 7	QL2-1650-000	08 - 3
QC1-6931-000	02 - 2	QC2-2403-000	12 - 8	QL2-1659-000	10 - 4
QC1-6999-000	09 - 3	QC2-2404-000	12 - 9	QL2-1660-000	10 - 5
QC1-7034-000	10 - 16	QC2-2408-000	12 - 10	QL2-1662-000	10 - 1
QC1-7043-000	10 - 15	QC2-2409-000	12 - 11	QL2-1663-000	08 - 14
QC1-7067-000	07 - 24	QC2-2410-000	12 - 12	QL2-1666-010	01 - 3
QC1-7068-000	07 - 16	QC2-2412-000	12 - 13	QL2-1667-000	02 - 12
QC1-7092-000	07 - 14	QC2-2434-000	12 - 32	QL2-1668-000	03 - 16
QC1-7137-000	01 - 10	QC2-3113-000	03 - 20	QL2-1676-000	12 - 26
QC1-7138-000	03 - 18	QC2-3114-000	03 - 21	QL2-1692-000	02 - 13
QC1-7141-000	07 - 21	QC2-3137-000	06 - 43	QL2-1697-000	02 - 14

NUMERICAL INDEX

iPF9100/9000S/9000(Numerical Index)

PARTS NUMBER	FIGURE & KEY NO.	PARTS NUMBER	FIGURE & KEY NO.	PARTS NUMBER	FIGURE & KEY NO.
QL2-2094-000	12 - 27	QM3-1018-000	06 - 4	QM3-3109-000	03 - 2
QL2-2095-000	07 - 4	QM3-1019-020	06 - 1	QM3-3112-000	06 - 36
QL2-2101-000	03 - 4	QM3-1019-030	06 - 1	QM3-3138-000	06 - 21
QL2-2108-000	08 - 4	QM3-1020-000	06 - 45	QM3-3158-000	04 - 1
QL2-2109-000	10 - 6	QM3-1023-000	07 - 32	QM3-3165-000	03 - 2
QL2-2110-000	08 - 1	QM3-1024-000	07 - 22	QM3-3166-000	03 - 2
QL2-2114-000	08 - 2	QM3-1025-000	07 - 33	QM3-3358-010	06 - 1
QL2-2426-000	13 - 4	QM3-1026-000	07 - 25	QU1-0082-000	07 - 8
QL2-2442-000	06 - 34	QM3-1027-000	07 - 26	QU1-0083-000	07 - 9
QL2-2443-000	06 - 33	QM3-1031-000	02 - 15	QU1-0084-000	07 - 11
QL2-2782-000	10 - 8	QM3-1032-000	02 - 16	QU1-0130-000	06 - 26
QL2-2783-000	10 - 3	QM3-1033-020	05 - 6	QU1-0131-000	06 - 27
QL2-2784-000	10 - 2	QM3-1034-020	05 - 5	QU1-1004-000	06 - 38
QL2-3143-000	12 - 19	QM3-1038-000	08 - 9	QU1-2005-000	06 - 5
QL2-3144-000	12 - 20	QM3-1039-000	08 - 13	QU1-2006-000	06 - 19
QL2-3145-000	12 - 21	QM3-1044-010	06 - 22	QU1-2169-000	11 - 1
QL2-3146-000	12 - 22	QM3-1045-000	04 - 4	QU1-2170-000	07 - 1
QL2-3147-000	12 - 23	QM3-1047-000	04 - 5	QU1-2173-000	07 - 20
QL2-3148-000	12 - 24	QM3-1049-030	03 - 1	QU1-2175-000	06 - 35
QL2-3149-000	12 - 25	QM3-1053-010	06 - 6	QU1-2185-000	03 - 10
QM1-0662-000	06 - 47	QM3-1055-000	05 - 4	QU1-6016-000	07 - 10
QM2-2470-040	01 - 5	QM3-1056-000	08 - 6	QY9-0103-000	14 - 1
QM2-2475-000	01 - 7	QM3-1092-000	12 - 4	WC4-5052-000	10 - 19
QM2-2476-090	01 - 4	QM3-1093-000	12 - 15	WC4-5180-000	07 - 23
QM2-2495-010	03 - 5	QM3-1095-000	12 - 18	WG8-5624-000	06 - 30
QM2-2502-000	07 - 3	QM3-1106-000	07 - 7	WG8-5624-000	10 - 13
QM2-2511-000	07 - 18	QM3-1108-000	12 - 16	WG8-5624-000	12 - 14
QM2-2526-000	07 - 13	QM3-1109-000	12 - 17	WG8-5677-000	07 - 31
QM2-2528-010	10 - 9	QM3-1110-000	12 - 31	WG8-5677-000	10 - 14
QM2-2572-000	06 - 49	QM3-1117-000	01 - 6	WG8-5770-000	12 - 2
QM2-2596-050	09 - 1	QM3-1191-000	04 - 9	WG8-5771-000	12 - 3
QM2-3421-010	06 - 36	QM3-1419-000	08 - 8	WK1-5024-000	04 - 2
QM2-3426-000	06 - 21	QM3-2022-000	13 - 5	WP2-5187-000	04 - 7
QM3-0541-000	06 - 17	QM3-2023-000	13 - 6	XA9-0249-000	07 - 30
QM3-0560-000	06 - 18	QM3-2064-000	08 - 12	XA9-0724-000	10 - 502
QM3-0584-000	06 - 2	QM3-3025-000	13 - 8	XA9-0732-000	02 - 17
QM3-0979-000	06 - 29	QM3-3026-000	02 - 15	XA9-0732-000	03 - 22
QM3-0980-000	06 - 37	QM3-3027-000	02 - 16	XA9-0732-000	04 - 8
QM3-0981-000	03 - 2	QM3-3028-000	02 - 16	XA9-0732-000	05 - 7
QM3-0983-000	04 - 6	QM3-3029-000	04 - 4	XA9-0732-000	06 - 11
QM3-0985-000	04 - 1	QM3-3030-030	03 - 1	XA9-0732-000	07 - 29
QM3-0986-000	03 - 2	QM3-3069-000	08 - 5	XA9-0732-000	08 - 15
QM3-1004-010	05 - 1	QM3-3072-000	05 - 2	XA9-0732-000	09 - 5
QM3-1005-000	05 - 2	QM3-3073-000	05 - 3	XA9-0732-000	10 - 22
QM3-1006-000	05 - 3	QM3-3080-000	05 - 2	XA9-1501-000	01 - 20
QM3-1007-000	03 - 17	QM3-3081-000	05 - 3	XA9-1501-000	12 - 30
QM3-1008-000	10 - 12	QM3-3090-010	06 - 1	XB1-2300-406	07 - 502
QM3-1010-000	09 - 2	QM3-3092-000	06 - 7	XB1-2300-606	04 - 502
QM3-1011-000	10 - 18	QM3-3099-000	04 - 1	XB1-2300-607	05 - 501
QM3-1012-000	08 - 5	QM3-3106-000	06 - 29	XB1-2300-806	06 - 503
QM3-1016-060	06 - 7	QM3-3107-000	06 - 37	XB1-2400-606	04 - 501
QM3-1017-000	06 - 3	QM3-3108-000	03 - 2	XB1-2400-606	06 - 505

NUMERICAL INDEX

iPF9100/9000S/9000(Numerical Index)

PARTS NUMBER	FIGURE & KEY NO.	PARTS NUMBER	FIGURE & KEY NO.	PARTS NUMBER	FIGURE & KEY NO.
XB2-8401-009	07 - 501				
XB3-7400-809	05 - 503				
XB4-5300-806	06 - 504				
XB4-5400-806	07 - 503				
XB4-7300-807	12 - 501				
XB4-7300-809	06 - 502				
XB4-7301-009	06 - 506				
XB4-7401-009	06 - 501				
XB4-7402-509	08 - 502				
XB4-7404-009	08 - 501				
XB5-2400-809	05 - 502				
XD1-1100-502	06 - 507				
XD1-1108-219	09 - 502				
XD2-1100-322	12 - 503				
XD2-1100-502	12 - 502				
XD2-1100-642	09 - 501				
XD2-3100-152	10 - 501				
XD3-2200-222	07 - 504				
XF2-4117-360	07 - 12				
XF2-4119-770	07 - 2				
XF2-4119-790	07 - 2				
XG9-0365-000	09 - 6				
XG9-0453-000	07 - 5				
XG9-0549-000	09 - 6				

iPF9100/9000S/9000(Parts Catalog)

iPF9100

120V/230V Q51-1714-000

100V Q51-1717-000

iPF9000S

120V/230V Q51-1694-000

100V Q51-1697-000

iPF9000

120V/230V Q51-1344-000

100V Q51-1377-000

BU-01

Q55-2460-000

RH3-63

Q55-2130-000

Contents

01	PRINTER & ACCESSORIES	2-1
02	COVERS (1)	2-3
03	COVERS (2)	2-5
04	ELECTRICAL PART	2-7
05	INK TANK & PURGE UNIT	2-9
06	CARRIAGE UNIT	2-11
07	FEED MOTOR ASS'Y	2-15
08	AIR FLOW FAN UNIT	2-18
09	PINCH ROLLER UNIT	2-20
10	PLATEN & FEED ROLLER.....	2-21
11	LINEAR SCALE	2-23
12	MEDIA TAKE-UP UNIT.....	2-24
13	STAND & BASKET UNIT	2-27
14	TOOL	2-29

FIGURE 01 PRINTER & ACCESSORIES

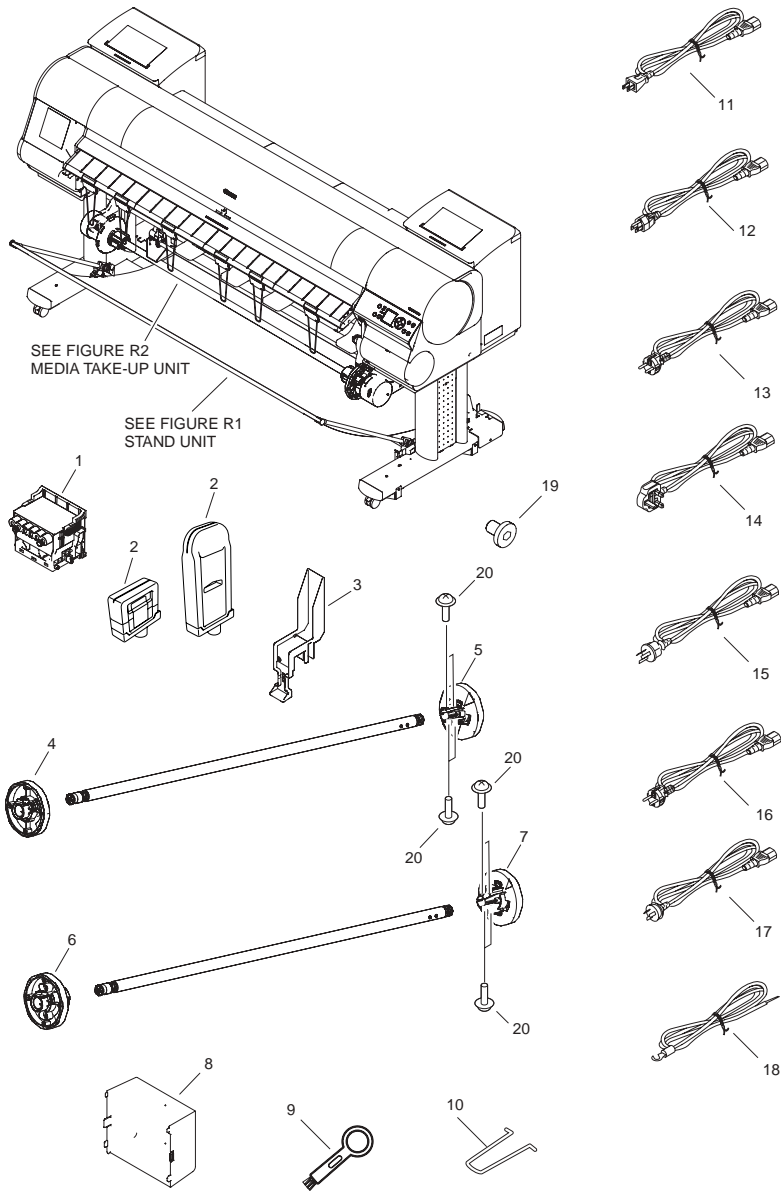


FIGURE & KEY NO.	PARTS NUMBER	RANK	Q'TY	DESCRIPTION	SERIAL NUMBER/REMARKS	SVC
Fig.01	NPN		RF	PRINTER & ACCESSORIES		
1	NPN		RF	PRINTHEAD		
2	NPN		RF	INK TANK (MBK)		
2	NPN		RF	INK TANK (PBK)		
2	NPN		RF	INK TANK (C)		
2	NPN		RF	INK TANK (M)		
2	NPN		RF	INK TANK (Y)		
2	NPN		RF	INK TANK (PC)		
2	NPN		RF	INK TANK (PM)		
2	NPN		RF	INK TANK (R)	iPF9100/9000	
2	NPN		RF	INK TANK (G)	iPF9100/9000	
2	NPN		RF	INK TANK (B)	iPF9100/9000	
2	NPN		RF	INK TANK (GY)		
2	NPN		RF	INK TANK (PGY)	iPF9100/9000	
3	QL2-1666-010		1	STOPPER, BELT		
4	QM2-2476-090		1	2 INCH DRIVE SPOOL UNIT LEFT		
5	QM2-2470-040		1	2 INCH DRIVE SPOOL UNIT RIGHT		
6	QM3-1117-000		1	3 INCH DRIVE SPOOL UNIT LEFT		
7	QM2-2475-000		1	3 INCH DRIVE SPOOL UNIT RIGHT		
8	QC2-2224-000		1	POCKET		
9	FB1-0733-000		1	BRUSH, CLEANER		
10	QC1-7137-000		6	BAR, DELIVERY SUPPORT		
11	QK1-1394-000		1	CORD, POWER	100V	
12	QK1-1393-000		1	CORD, POWER	120V(UL)	
13	QK1-1392-000		1	CORD, POWER	220V-240V	
14	QK1-1441-000		1	CORD, POWER	240V(UK)	
15	QK1-1395-000		1	CORD, POWER	240V(AUS)	
16	QH2-2732-000		1	CORD, POWER	240V(KOR)	
17	QK1-1396-000		1	CORD, POWER	240V(CHN)	
18	FH2-7092-020		1	WIRE, GROUND	100V	
19	QE1-2334-000		1	SCREW, ALLEN, M4X6		
20	XA9-1501-000		8	SCREW, RS, M3X10		

FIGURE 02 COVERS (1)

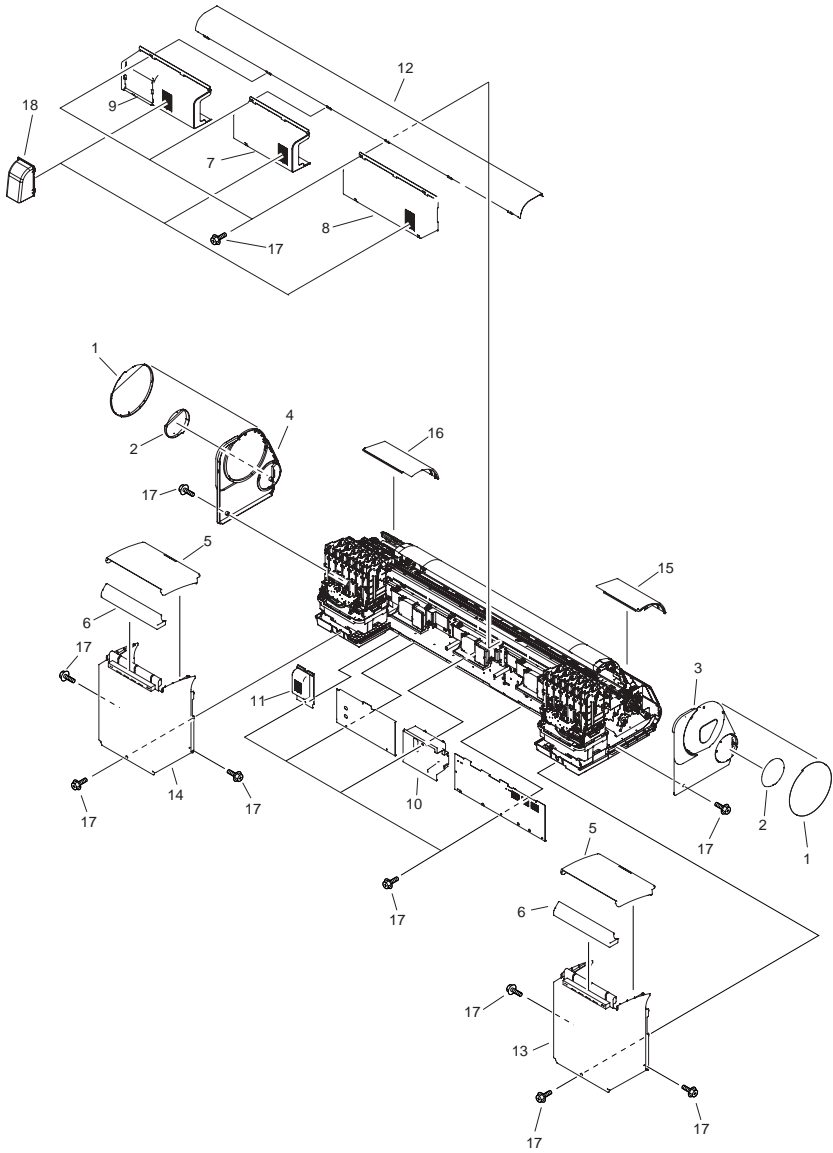


FIGURE & KEY NO.	PARTS NUMBER	R A N K	Q'TY	DESCRIPTION	SERIAL NUMBER/ REMARKS	S V C
Fig.02	NPN		RF	COVERS (1)		
1	QC1-6930-000		2	COVER, CIRCLE(L)	iPF9100/9000	
1	QC2-6658-000		2	COVER, CIRCLE(L)	iPF9000S	
2	QC1-6931-000		2	COVER, CIRCLE(S)	iPF9100/9000	
2	QC2-6659-000		2	COVER, CIRCLE(S)	iPF9000S	
3	QC2-2191-000		1	COVER, SIDE, LEFT		
4	QC2-2192-000		1	COVER, SIDE, RIGHT		
5	QC2-2181-000		2	COVER, TANK, UPPER		
6	QC2-2183-000		2	COVER, TANK, REAR		
7	QC2-2197-000		1	COVER, REAR, MIDDLE		
8	QC2-2198-000		1	COVER, REAR, LEFT		
9	QC2-2199-000		1	COVER, REAR, RIGHT		
10	QC2-2200-000		1	COVER, INTERFACE		
11	QC2-2202-030		1	COVER, EXHAUST		
12	QL2-1667-000		1	COVER, REAR, UPPER		
13	QL2-1692-000		1	COVER, TANK, LEFT		
14	QL2-1697-000		1	COVER, TANK, RIGHT		
15	QM3-1031-000		1	COVER, LEFT, UPPER	iPF9100/9000	
15	QM3-3026-000		1	COVER, LEFT, UPPER	iPF9000S	
16	QM3-1032-000		1	RIGHT COVER UNIT	iPF9000	
16	QM3-3027-000		1	RIGHT COVER UNIT	iPF9100	
16	QM3-3028-000		1	RIGHT COVER UNIT	iPF9000S	
17	XA9-0732-000		25	SCREW, RS, M4		
18	QC2-6679-000		3	COVER, EXHAUST	iPF9100/9000S	

FIGURE 03 COVERS (2)

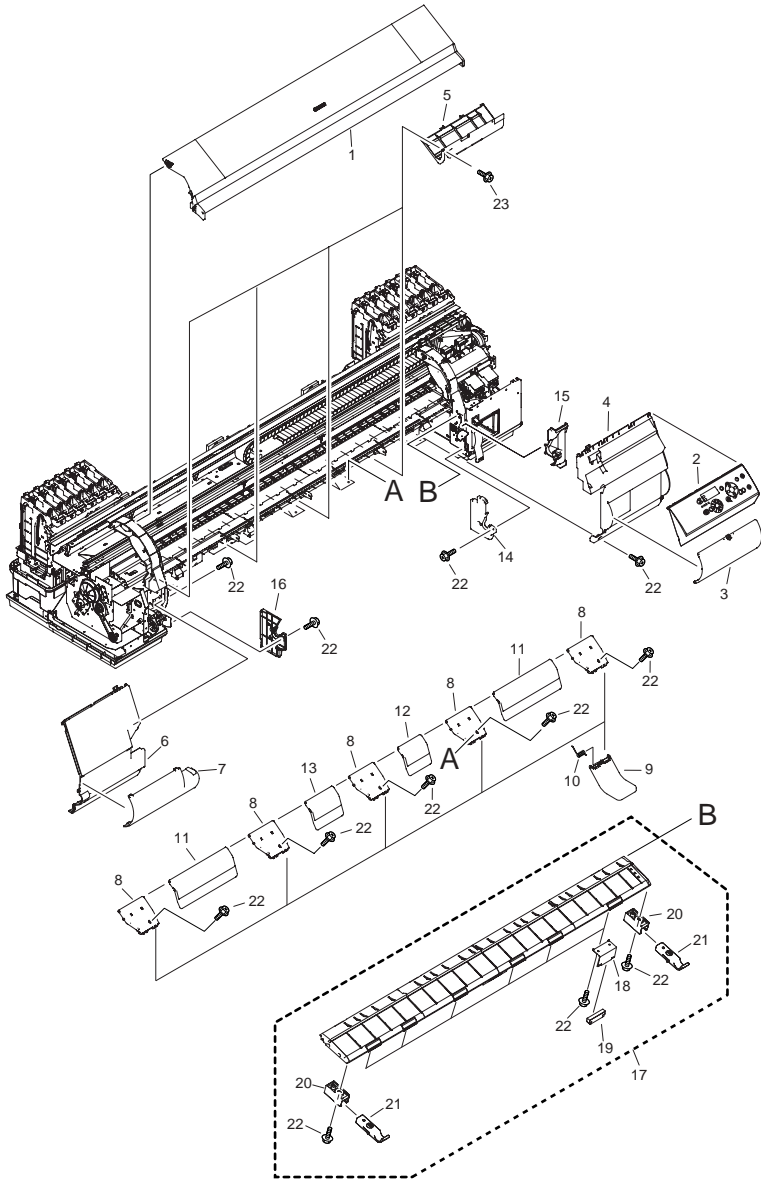


FIGURE & KEY NO.	PARTS NUMBER	R A N K	Q'TY	DESCRIPTION	SERIAL NUMBER/ REMARKS	S V C
Fig.03	NPN		RF	COVERS (2)		
1	QM3-1049-030		1	UPPER COVER UNIT	iPF9100/9000	
1	QM3-3030-030		1	UPPER COVER UNIT	iPF9000S	
2	QM3-0981-000		1	OPERATION PANEL UNIT	iPF9000(ENGLISH)	
2	QM3-0986-000		1	OPERATION PANEL UNIT	iPF9000(JAPANESE)	
2	QM3-3108-000		1	OPERATION PANEL UNIT	iPF9100(ENGLISH)	
2	QM3-3109-000		1	OPERATION PANEL UNIT	iPF9100(JAPANESE)	
2	QM3-3165-000		1	OPERATION PANEL UNIT	iPF9000S(ENGLISH)	
2	QM3-3166-000		1	OPERATION PANEL UNIT	iPF9000S(JAPANESE)	
3	QC2-2178-020		1	COVER, CARTRIDGE	iPF9100/9000	
3	QC2-6657-020		1	COVER, CARTRIDGE	iPF9000S	
4	QL2-2101-000		1	COVER, RIGHT		
5	QM2-2495-010		3	FEED UPPER GUIDE UNIT		
6	QC2-2172-000		1	COVER, LEFT		
7	QC2-2173-000		1	COVER, LEFT, LOWER	iPF9100/9000	
7	QC2-6660-000		1	COVER, LEFT, LOWER	iPF9000S	
8	QC1-6924-000		5	GUIDE A, FEED LOWER		
9	QC1-7278-000		5	ARM, LOWER GUIDE		
10	QU1-2185-000		5	SPRING, TORSION		
11	QC1-6925-000		2	GUIDE B, FEED LOWER		
12	QC1-6926-000		1	GUIDE C, FEED LOWER		
13	QC1-6927-000		1	GUIDE D, FEED LOWER		
14	QC2-2179-000		1	COVER, SPOOL RECEIVE, RIGHT, 1		
15	QC2-2180-000		1	COVER, SPOOL RECEIVE, RIGHT, 2		
16	QL2-1668-000		1	COVER, SPOOL RECEIVE, LEFT		
17	QM3-1007-000		1	ROLL PAPER COVER UNIT		
18	QC1-7138-000		6	MOUNT, ASSIST, DELIVERY		
19	QC1-7143-000		6	SHEET, DELIVERY ASSIST		
20	QC2-3113-000		2	HOOK, BASKET		
21	QC2-3114-000		2	MOUNT, HOOK		
22	XA9-0732-000		30	SCREW, RS, M4		
23	QC1-7399-000		8	SCREW, STEPPED, M4		

FIGURE & KEY NO.	PARTS NUMBER	RANK	Q'TY	DESCRIPTION	SERIAL NUMBER/REMARKS	SVC
Fig.04	NPN		RF	ELECTRICAL PART		
1	QM3-0985-000		1	MAIN BOARD DIMM ASS'Y	iPF9000	
1	QM3-3158-000		1	MAIN BOARD DIMM ASS'Y	iPF9000S	
1	QM3-3099-000		1	MAIN BOARD DIMM ASS'Y	iPF9100	
2	WK1-5024-000		1	LITHIUM BATTERY		
3	QK1-2912-000		1	POWER SUPPLY ASS'Y		
4	QM3-1045-000		1	HDD UNIT, MHV2040AH	iPF9000	
4	QM3-3029-000		1	HDD UNIT, MHW2080BH	iPF9100/9000S	
5	QM3-1047-000		1	INLET UNIT		
6	QM3-0983-000		1	TAKE-UP UNIT RELAY PCB ASS'Y		
7	WP2-5187-000		1	SENSOR UNIT, HUMIDITY		
8	XA9-0732-000		9	SCREW, RS, M4		
9	QM3-1191-000		1	HARNESS, WIRE, MAIN	iPF9000	
501	XB1-2400-606		13	SCREW, MACHINE M4X6		
502	XB1-2300-606		4	SCREW, MACHINE M3X6		

FIGURE 05 INK TANK & PURGE UNIT

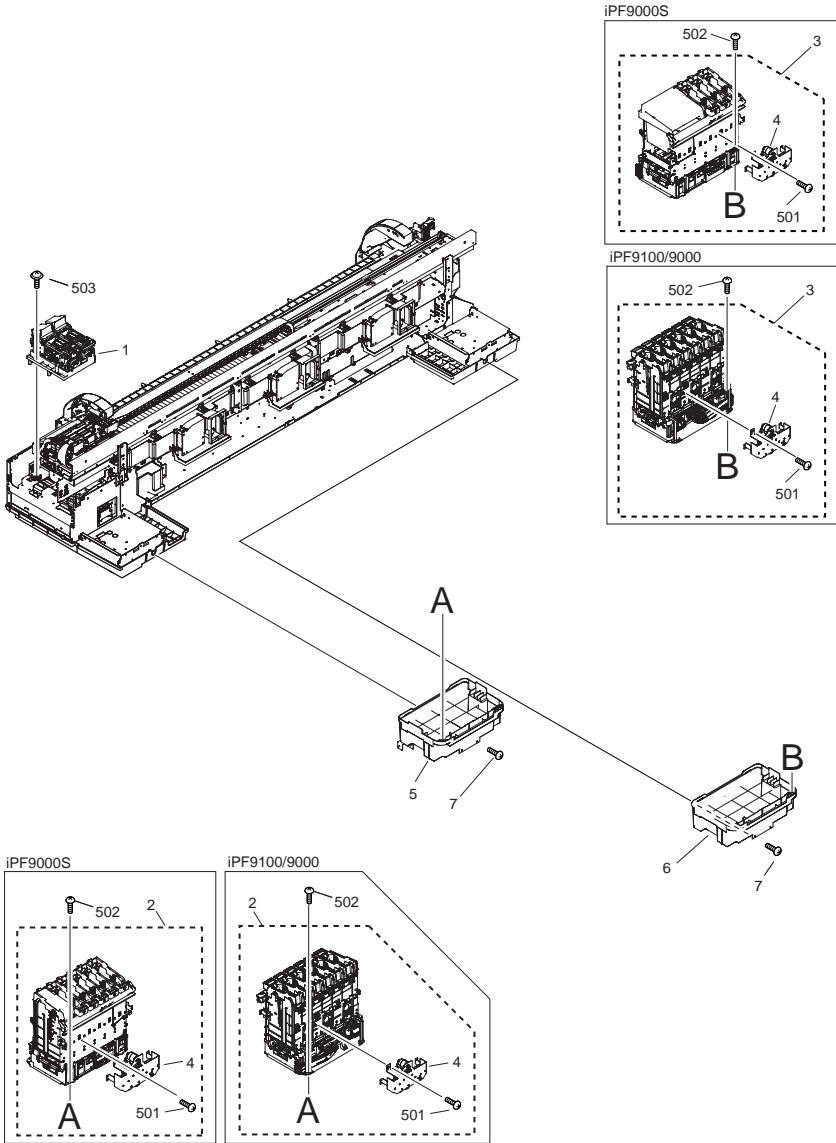


FIGURE & KEY NO.	PARTS NUMBER	R A N K	Q'TY	DESCRIPTION	SERIAL NUMBER/ REMARKS	S V C
Fig.05	NPN		RF	INK TANK & PURGE UNIT		
1	QM3-1004-010		1	PURGE UNIT		
2	QM3-1005-000		1	INK TANK UNIT R	iPF9000	
2	QM3-3080-000		1	INK TANK UNIT R	iPF9100	
2	QM3-3072-000		1	INK TANK UNIT R	iPF9000S	
3	QM3-1006-000		1	INK TANK UNIT L	iPF9000	
3	QM3-3081-000		1	INK TANK UNIT L	iPF9100	
3	QM3-3073-000		1	INK TANK UNIT L	iPF9000S	
4	QM3-1055-000		2	INK SUPPLY DRIVE UNIT		
5	QM3-1034-020		1	INK SUPPLY MOUNT UNIT (R)		
6	QM3-1033-020		1	INK SUPPLY MOUNT UNIT (L)		
7	XA9-0732-000		4	SCREW, RS, M4		
501	XB1-2300-607		6	SCREW, BH3X6(S)		
502	XB5-2400-809		4	SCREW, TAPPING M4X8		
503	XB3-7400-809		3	SCREW, RS TOOTHED LOCK, M4X8		

FIGURE 06 CARRIAGE UNIT

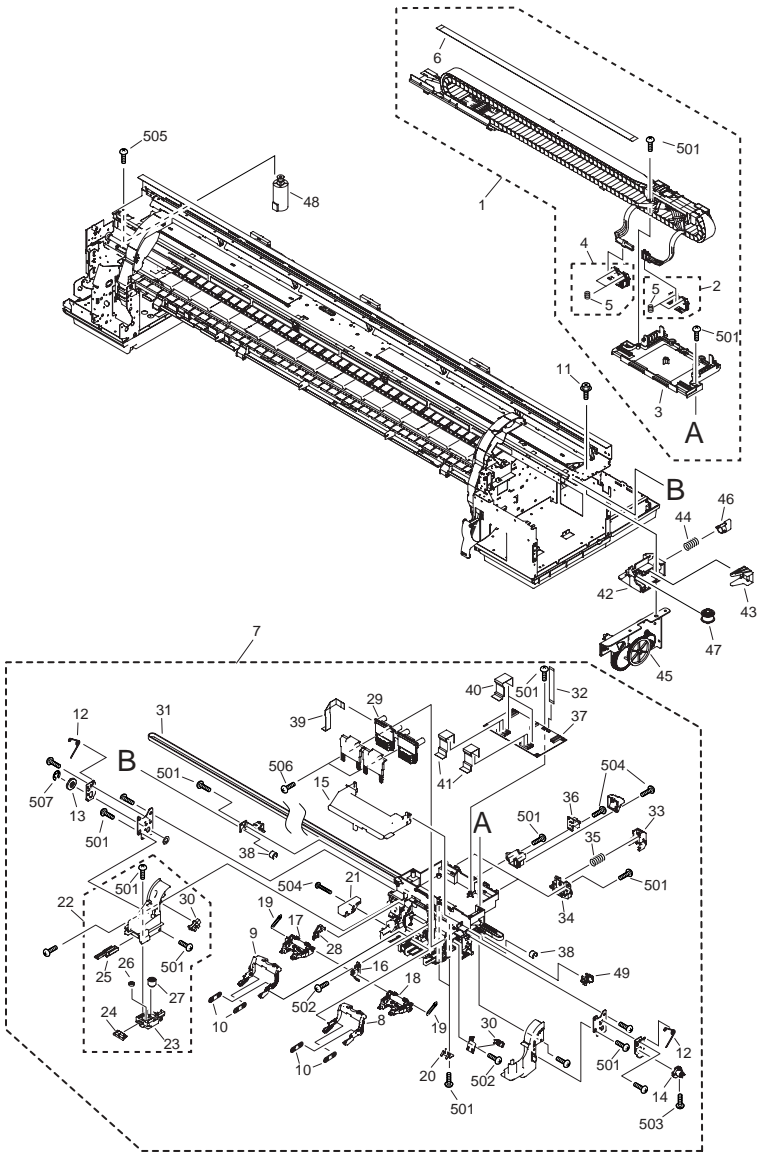


FIGURE & KEY NO.	PARTS NUMBER	R A N K	Q'TY	DESCRIPTION	SERIAL NUMBER/REMARKS	S V C
Fig.06	NPN		RF	CARRIAGE UNIT		
1	QM3-1019-030		1	TUBE UNIT	iPF9000	
1	QM3-3090-010		1	TUBE UNIT	iPF9000S	
1	QM3-3358-010		1	TUBE UNIT	iPF9100	
1	QM3-1019-020		1	TUBE UNIT	iPF9100/9000	
2	QM3-0584-000		1	BASE UNIT, JOINT		
3	QM3-1017-000		1	UPPER CARRIAGE COVER		
4	QM3-1018-000		1	BASE UNIT, JOINT, LEFT		
5	QU1-2005-000		4	SPRING, COMPRESSION		
6	QM3-1053-010		1	FLEXIBLE CABLE ASS'Y		
7	QM3-1016-060		1	CARRIAGE UNIT	iPF9000	
7	QM3-3092-000		1	CARRIAGE UNIT	iPF9100/9000S	
8	QC2-0659-050		1	LEVER R, INK TUBE		
9	QC2-0660-050		1	LEVER L, INK TUBE		
10	QC2-0661-000		4	LINK LEVER, TUBE		
11	XA9-0732-000		4	SCREW, RS, M4		
12	QC2-2078-000		2	SPRING, TORSION		
13	QC2-2104-000		1	CAM, LIFT, LEFT		
14	QC2-2106-000		1	CAM, LIFT, RIGHT		
15	QC2-3138-000		1	COVER, CARRIAGE		
16	QC2-0653-000		1	HOLDER, LEVER SET PRINTHEAD		
17	QM3-0541-000		1	HEAD LEVER UNIT		
18	QM3-0560-000		1	HEAD LEVER UNIT		
19	QU1-2006-000		2	SPRING, COMPRESSION		
20	QC1-7156-000		2	STOPPER, BELT		
21	QM2-3426-000		1	MULTI SENSOR UNIT	iPF9000	
21	QM3-3138-000		1	MULTI SENSOR UNIT	iPF9100/9000S	
22	QM3-1044-010		1	CUTTER HOLDER UNIT		
23	QC2-2364-000		1	HOLDER, GEAR		
24	QC2-2365-000		1	RACK		
25	QC2-2366-000		1	LEVER		
26	QU1-0130-000		1	GEAR, 20T		

FIGURE & KEY NO.	PARTS NUMBER	R A N K	Q'TY	DESCRIPTION	SERIAL NUMBER/REMARKS	S V C
27	QU1-0131-000		1	GEAR, 20T/36T		
28	QC2-0710-000		1	COVER, FFC MULTI SENSOR		
29	QM3-0979-000		1	HEAD RELAY PCB ASS'Y	iPF9000	
29	QM3-3106-000		1	HEAD RELAY PCB ASS'Y	iPF9100/9000S	
30	WG8-5624-000		2	IC, PHOTO INTERRUPTER		
31	QC2-2117-000		1	BELT, CARRIAGE	iPF9000	
31	QC2-6712-000		1	BELT, CARRIAGE	iPF9100/9000S	
32	QK1-2985-000		1	CABLE, FLEXIBLE		
33	QL2-1104-000		2	IDLER ROLLER UNIT	iPF9000	
33	QL2-2443-000		2	IDLER ROLLER UNIT	iPF9100/9000S	
34	QL2-1114-000		2	IDLER ROLLER HOLDER UNIT	iPF9000	
34	QL2-2442-000		2	IDLER ROLLER HOLDER UNIT	iPF9100/9000S	
35	QU1-2175-000		2	SPRING, COIL		
36	QM2-3421-010		1	ENCODER SENSOR UNIT	iPF9000	
36	QM3-3112-000		1	ENCODER SENSOR UNIT	iPF9100/9000S	
37	QM3-0980-000		1	CARRIAGE RELAY PCB ASS'Y	iPF9000	
37	QM3-3107-000		1	CARRIAGE RELAY PCB ASS'Y	iPF9100/9000S	
38	QU1-1004-000		2	BUSHING		
39	QK1-2091-000		1	CABLE, MULTI SENSOR	iPF9000	
39	QK1-2758-000		1	CABLE, MULTI SENSOR	iPF9100/9000S	
40	QK1-2983-000		2	CABLE, FLEXIBLE		
41	QK1-2984-000		4	CABLE, FLEXIBLE		
42	QC1-7303-000		1	MOUNT, IDLER ROLLER	iPF9000	
42	QL2-1649-000		1	MOUNT, IDLER ROLLER	iPF9100/9000S	
43	QC2-3137-000		1	GUIDE, IDLER ROLLER		
44	QE1-1270-000		1	SPRING, COIL		
45	QM3-1020-000		1	LIFT DRIVE UNIT		
46	QE1-2691-000		1	LEVER, IDLER ROLLER		
47	QM1-0662-000		1	IDLER ROLLER ASS'Y		
48	QK1-2896-000		1	MOTOR, CARRIAGE	iPF9000	
48	QK1-2868-000		1	MOTOR, CARRIAGE	iPF9100/9000S	
49	QM2-2572-000		1	RAIL CLEANER ASS'Y		

FIGURE & KEY NO.	PARTS NUMBER	R A N K	Q'TY	DESCRIPTION	SERIAL NUMBER/ REMARKS	S V C
501	XB4-7401-009		32	SCREW, TAP., PAN HEAD, M4X10		
502	XB4-7300-809		3	SCREW, TAP, BINDING HEAD, M3X8		
503	XB1-2300-806		1	SCREW, BH3X8		
504	XB4-5300-806		2	SCREW, TAP., TRUSS HEAD M3X8		
505	XB1-2400-606		4	SCREW, MACHINE M4X6		
506	XB4-7301-009		4	SCREW, BINDING HEAD SELF-TPG		
507	XD1-1100-502		1	SHIM		

FIGURE 07
FEED MOTOR ASS'Y

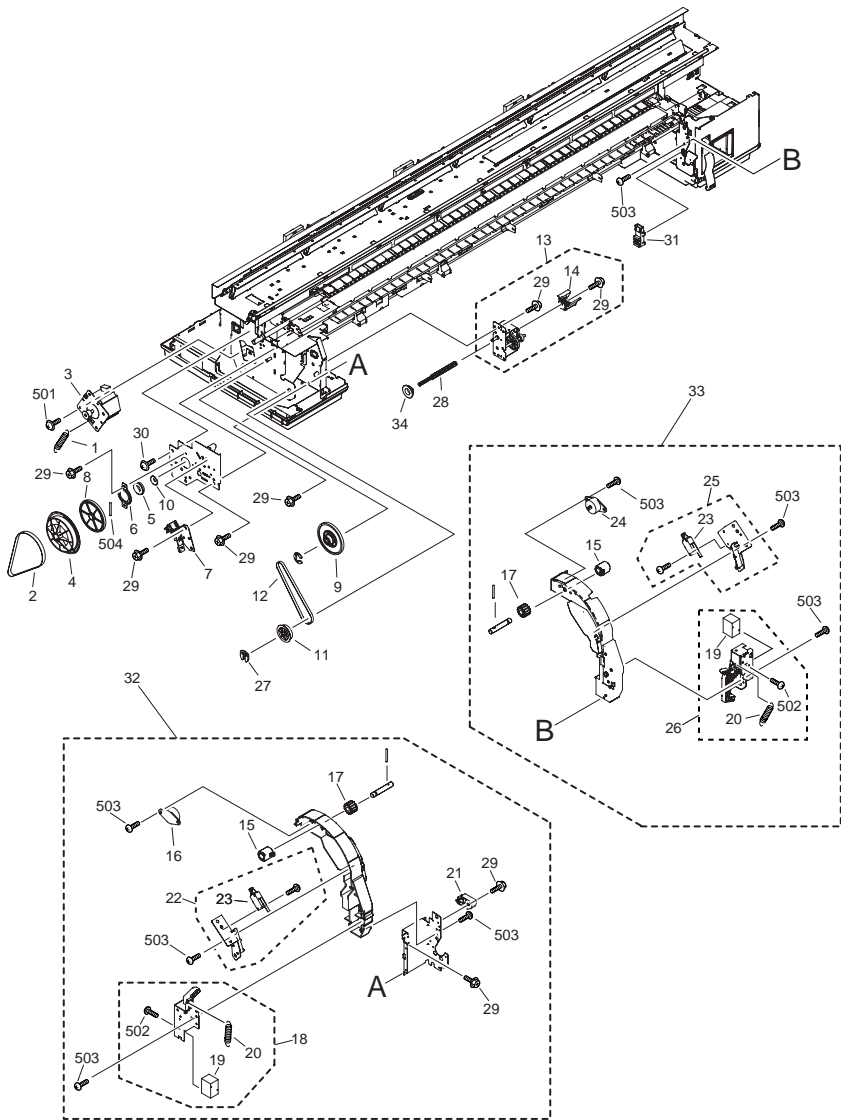


FIGURE & KEY NO.	PARTS NUMBER	RANK	Q'TY	DESCRIPTION	SERIAL NUMBER/REMARKS	SVC
Fig.07	NPN		RF	FEED MOTOR ASS'Y		
1	QU1-2170-000		1	SPRING, HOOK END COIL		
2	XF2-4119-770		1	BELT, FEED	iPF9000S	
2	XF2-4119-790		1	BELT, FEED	iPF9100/9000	
3	QM2-2502-000		1	FEED MOTOR ASS'Y		
4	QL2-2095-000		1	PULLEY ASS'Y		
5	XG9-0453-000		1	BEARING, BALL, 6902ZZNR, NSK		
6	QC1-6847-000		1	SUPPORT, BEARING		
7	QM3-1106-000		1	SENSOR UNIT		
8	QU1-0082-000		1	GEAR 76T		
9	QU1-0083-000		1	GEAR, PULLY 76T/36T		
10	QU1-6016-000		1	COLLAR, FEED ROLLER		
11	QU1-0084-000		1	GEAR 56T		
12	XF2-4117-360		1	BELT, DRIVE		
13	QM2-2526-000		1	SPOOL DRIVE UNIT		
14	QC1-7092-000		1	COVER, GEAR		
15	QC2-4136-000		2	COUPLING, DAMPER		
16	QC1-7068-000		1	DAMPER, LEFT		
17	QE1-1063-000		2	GEAR 14T		
18	QM2-2511-000		1	UPPER COVER LOCK UNIT L		
19	FH7-5489-050		2	SOLENOID, DC24V		
20	QU1-2173-000		2	SPRING, HOOK END COIL		
21	QC1-7141-000		1	STOPPER, COVER		
22	QM3-1024-000		1	UPPER COVER SWITCH UNIT L		
23	WC4-5180-000		2	MICROSWITCH (DOOR)		
24	QC1-7067-000		1	DAMPER, RIGHT		
25	QM3-1026-000		1	UPPER COVER SWITCH UNIT R		
26	QM3-1027-000		1	UPPER COVER LOCK UNIT R		
27	FA3-8727-000		1	RETAINING RING		
28	QC2-2195-000		1	SHAFT, JOINT		
29	XA9-0732-000		11	SCREW, RS, M4		
30	XA9-0249-000		3	SCREW, M4X8		

FIGURE & KEY NO.	PARTS NUMBER	RANK	Q'TY	DESCRIPTION	SERIAL NUMBER/REMARKS	SVC
31	WG8-5677-000		1	PHOTO-INTERRUPTER		
32	QM3-1023-000		1	COVER STAY UNIT L		
33	QM3-1025-000		1	COVER STAY UNIT R		
34	FS5-1189-000		1	BUSHING		
501	XB2-8401-009		4	SCREW, WWASHER, M4X10		
502	XB1-2300-406		4	SCREW, MACHINE, TRUSS HEAD, M3		
503	XB4-5400-806		12	SCREW, P, M4X8		
504	XD3-2200-222		1	PIN		

FIGURE & KEY NO.	PARTS NUMBER	R A N K	Q'TY	DESCRIPTION	SERIAL NUMBER/ REMARKS	S V C
Fig.08	NPN		RF	AIR FLOW FAN UNIT		
1	QL2-2110-000		1	WASTE INK ABSORBER UNIT		
2	QL2-2114-000		1	DUCT ASS'Y		
3	QL2-1650-000		1	WASTE INK ABSORBER UNIT (S)		
4	QL2-2108-000		3	WASTE INK ABSORBER UNIT (L)		
5	QM3-1012-000		1	SUCTION FAN UNIT	iPF9000	
5	QM3-3069-000		1	SUCTION FAN UNIT	iPF9100/9000S	
6	QM3-1056-000		1	HEAD MANAGEMENT SENSOR		
7	QC1-7237-000		1	ABSORBER, INK		
8	QM3-1419-000		1	M/C RELAY PCB ASS'Y		
9	QM3-1038-000		2	FAN UNIT		
10	QC1-9198-000		3	FILTER, MIST		
11	QK1-1387-000		3	FAN, MIST		
12	QM3-2064-000		8	DUCT UNIT		
13	QM3-1039-000		1	FAN UNIT		
14	QL2-1663-000		1	DUCT		
15	XA9-0732-000		19	SCREW, RS, M4		
501	XB4-7404-009		6	SCREW, TAP BINDING HEAD, M4X40		
502	XB4-7402-509		24	SCREW, TAP., TRUSS HEAD, M4X25		

FIGURE 09 PINCH ROLLER UNIT

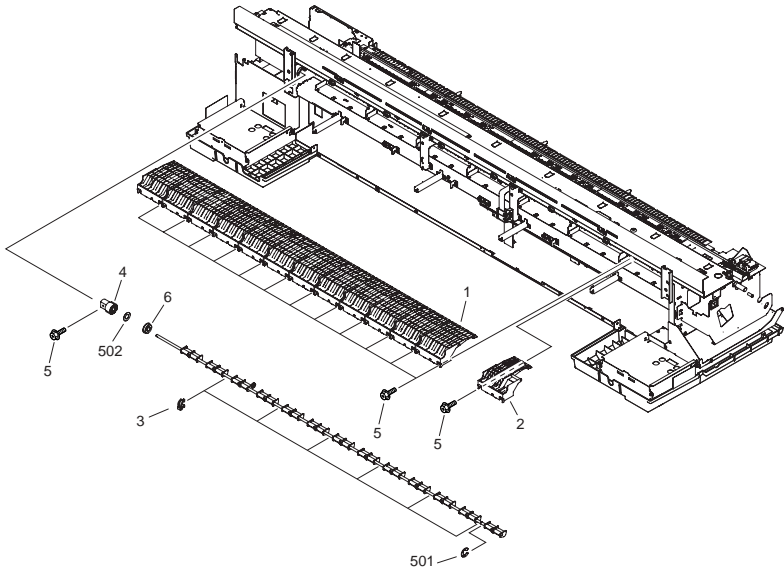


FIGURE & KEY NO.	PARTS NUMBER	RANK	Q'TY	DESCRIPTION	SERIAL NUMBER/REMARKS	SVC
Fig.09	NPN		RF	PINCH ROLLER UNIT		
1	QM2-2596-050		12	PINCH ROLLER UNIT		
2	QM3-1010-000		1	PINCH ROLLER UNIT		
3	QC1-6999-000		6	BUSHING		
4	QE1-1048-000		1	GEAR		
5	XA9-0732-000		27	SCREW, RS, M4		
6	XG9-0549-000		1	BEARING, BALL	iPF9000	
6	XG9-0365-000		1	BEARING, BALL	iPF9100/9000S	
501	XD2-1100-642		1	RING, E		
502	XD1-1108-219		1	WASHER, COP		

FIGURE 10
PLATEN & FEED ROLLER

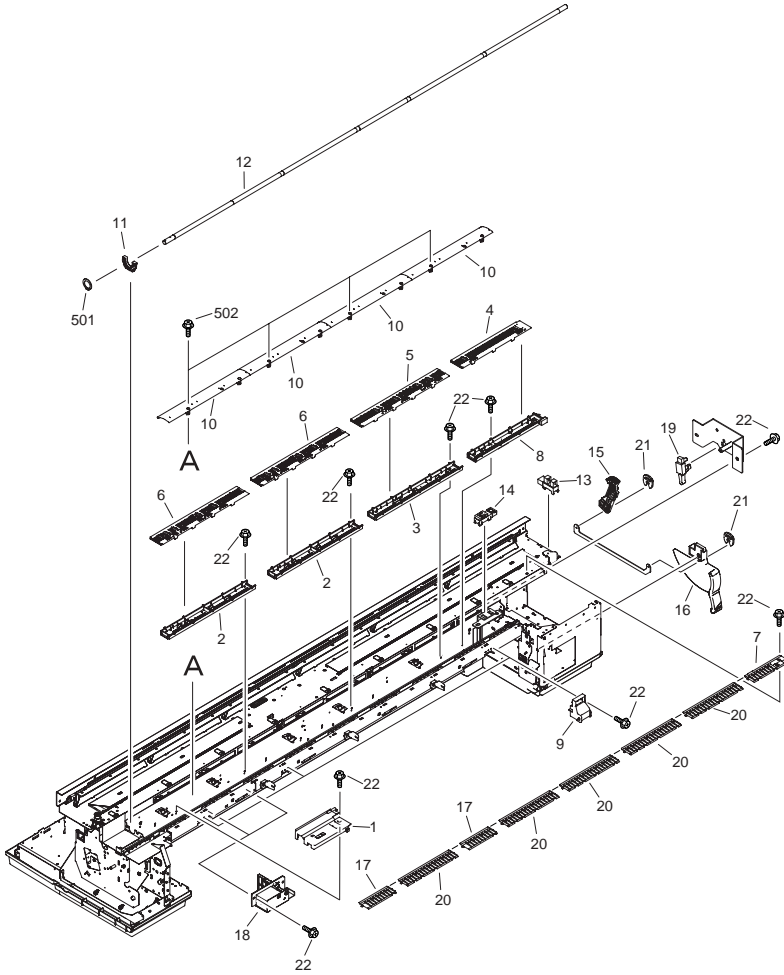


FIGURE & KEY NO.	PARTS NUMBER	R A N K	Q'TY	DESCRIPTION	SERIAL NUMBER/ REMARKS	S V C
Fig.10	NPN		RF	PLATEN & FEED ROLLER		
1	QL2-1662-000		1	MOUNT, SENSOR ADJUSTING		
2	QL2-2784-000		2	BASE, PLATEN L		
3	QL2-2783-000		1	BASE, PLATEN C		
4	QL2-1659-000		1	PLATEN R		
5	QL2-1660-000		1	PLATEN C		
6	QL2-2109-000		2	PLATEN L		
7	QC2-2355-000		1	GUIDE, DELIVERY, RIGHT		
8	QL2-2782-000		1	BASE, PLATEN R		
9	QM2-2528-010		3	COVER LOCK UNIT		
10	QC1-6921-000		4	PLATEN, REAR		
11	QC2-2082-000		1	BUSHING		
12	QM3-1008-000		1	FEED ROLLER ASS'Y		
13	WG8-5624-000		1	IC, PHOTO INTERRUPTER		
14	WG8-5677-000		1	PHOTO-INTERRUPTER		
15	QC1-7043-000		1	GEAR, RELEASE		
16	QC1-7034-000		1	LEVER, RELEASE		
17	QC2-2356-000		2	GUIDE, DELIVERY, LEFT		
18	QM3-1011-000		2	SOLENOID UNIT		
19	WC4-5052-000		1	MICRO SWITCH		
20	QC2-2354-000		5	GUIDE, DELIVERY		
21	FA3-8727-000		2	RING, RETAINING		
22	XA9-0732-000		47	SCREW, RS, M4		
501	XD2-3100-152		1	RING, C		
502	XA9-0724-000		8	SCREW, M3X8		

FIGURE 11 LINEAR SCALE

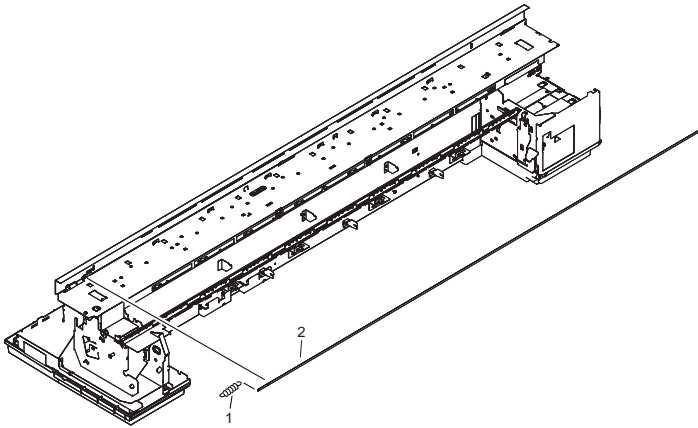


FIGURE & KEY NO.	PARTS NUMBER	RANK	QTY	DESCRIPTION	SERIAL NUMBER/REMARKS	SVC
Fig.11	NPN		RF	LINEAR SCALE		
1	QU1-2169-000		1	SPRING, HOOK END COIL		
2	QC3-1883-000		1	SCALE, LINEAR		

FIGURE & KEY NO.	PARTS NUMBER	R A N K	Q'TY	DESCRIPTION	SERIAL NUMBER/ REMARKS	S V C
Fig.12	NPN		RF	MEDIA TAKE-UP UNIT		
1	QK1-2908-000		1	CABLE, INTERFACE		
2	WG8-5770-000		1	IC, PID310L, PHOTO-INTERRUPTER		
3	WG8-5771-000		1	IC, PIE310, PHOTO-INTERRUPTER		
4	QM3-1092-000		1	MEDIA TAKE-UP DRIVE UNIT		
5	QC2-2399-000		1	KNOB		
6	QC2-2401-000		1	LEVER, LOCK		
7	QC2-2402-000		1	LEVER, RELEASE		
8	QC2-2403-000		1	GEAR, 14T		
9	QC2-2404-000		1	GEAR, 22T		
10	QC2-2408-000		1	SPRING, TORSION		
11	QC2-2409-000		1	SPRING, TORSION		
12	QC2-2410-000		1	COVER, DRIVE UNIT, 1		
13	QC2-2412-000		1	COVER, DRIVE UNIT, 2		
14	WG8-5624-000		1	IC, PHOTO INTERRUPTER		
15	QM3-1093-000		1	MEDIA TAKE-UP IDLER UNIT		
16	QM3-1108-000		1	RIGHT FLANGE UNIT		
17	QM3-1109-000		1	LEFT FLANGE UNIT		
18	QM3-1095-000		2	3 INCH ADAPTER UNIT		
19	QL2-3143-000		1	WEIGHT G		
20	QL2-3144-000		1	WEIGHT F		
21	QL2-3145-000		1	WEIGHT E		
22	QL2-3146-000		1	WEIGHT D		
23	QL2-3147-000		1	WEIGHT C		
24	QL2-3148-000		1	WEIGHT A		
25	QL2-3149-000		1	WEIGHT B		
26	QL2-1676-000		2	WEIGHT FLANGE 1		
27	QL2-2094-000		2	WEIGHT FLANGE 2		
28	QE1-1495-000		1	WEIGHT JOINT		
29	QE1-2304-000		15	BOLT, HEX HEAD, M4X8		
30	XA9-1501-000		4	SCREW, RS, M3X10		
31	QM3-1110-000		1	MEDIA TAKE-UP SPOOL SHAFT UNIT		

FIGURE & KEY NO.	PARTS NUMBER	RANK	Q'TY	DESCRIPTION	SERIAL NUMBER/REMARKS	SVC
32	QC2-2434-000		1	GEAR, 27T		
501	XB4-7300-807		1	SCREW, TAP TIGHT, BINDING HEAD		
502	XD2-1100-502		2	RETAINING RING (E-TYPE)		
503	XD2-1100-322		1	RETAINING RING (E-TYPE)		

FIGURE 13
STAND & BASKET UNIT

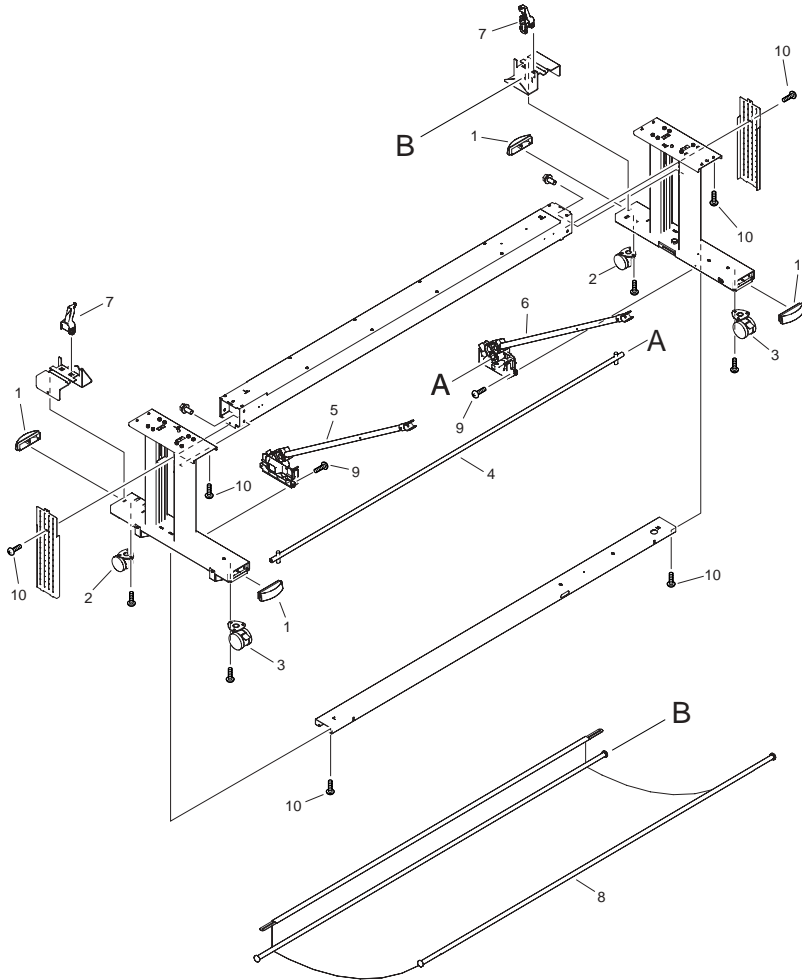


FIGURE & KEY NO.	PARTS NUMBER	RANK	Q'TY	DESCRIPTION	SERIAL NUMBER/REMARKS	SVC
Fig.13	NPN		RF	STAND & BASKET UNIT		
1	QC2-6626-000		4	CAP, FOOT		
2	QC2-4350-000		2	CASTER		
3	QC2-4351-000		2	CASTER		
4	QL2-2426-000		1	BASKET ROD		
5	QM3-2022-000		1	BASKET SUPPORT (L)		
6	QM3-2023-000		1	BASKET SUPPORT (R)		
7	QC2-6025-000		2	HOLDER, REAR		
8	QM3-3025-000		1	BASKET ROD		
9	QC2-4116-000		20	SCREW, HEX SOCKET, M4X10		

FIGURE 14 TOOL

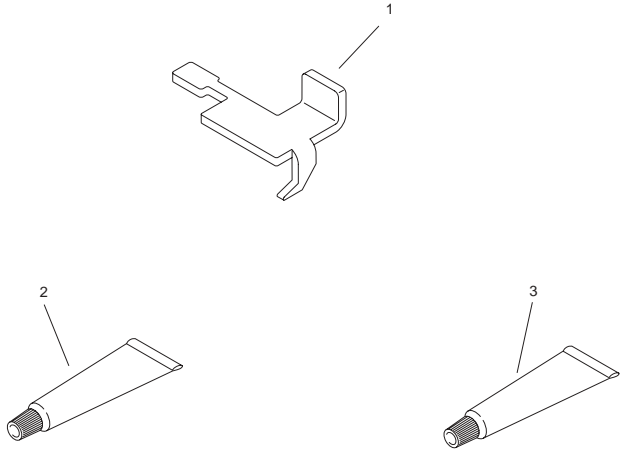


FIGURE & KEY NO.	PARTS NUMBER	RANK	Q'TY	DESCRIPTION	SERIAL NUMBER/REMARKS	SVC
Fig.14	NPN		RF	TOOL		
1	QY9-0103-000		1	COVER SWITCH TOOL		
2	CK-0551-020		1	LUBE, PERMALUB G NO.2		
3	CK-0562-000		1	GREASE, MOLYKOTE PG-641		

Prepared by
L Printer Quality Assurance Center
CANON INC.

Canon