

# **PARTS CATALOG**

**W8400**

**Canon**

**Apr 5 2005**



## **PREFACE**

This Parts Catalog contains listings of parts used

Diagrams are provided with the listings to aid the service technician in identifying clearly, the item to be ordered.

Whenever ordering parts, consult this Parts Catalog for all of the information pertaining to each item. Be sure to include, in the Parts Request, the full item description, the item part number, and the quantity.

***COPYRIGHT (C) 1999 CANON INC.***

Use of this manual should be strictly supervised to avoid disclosure of confidential information.



# Contents

## Parts List Index

W8400 .....	1-1
-------------	-----

## W8400

01	PRINTER & ACCESSORIES .....	2-1
02	COVER(1) .....	2-3
03	COVER(2) .....	2-5
04	ELECTRICAL PART .....	2-7
05	INK TANK & PURGE UNIT .....	2-9
06	CARRIAGE UNIT .....	2-11
07	FEED MOTOR ASS'Y .....	2-14
08	AIR FLOW FAN UNIT .....	2-17
09	PINCH ROLLER UNIT .....	2-19
10	PLATEN & FEED ROLLER .....	2-21
11	LINEAR SCALE .....	2-23
12	TOOL .....	2-25
R1	STAND UNIT .....	2-27



# NUMERICAL INDEX

## W8400

PARTS NUMBER	FIGURE & KEY NO.	PARTS NUMBER	FIGURE & KEY NO.	PARTS NUMBER	FIGURE & KEY NO.
CK-0551-020	12 - 4	QC1-6983-000	11 - 2	QK1-1393-000	01 - 14
CK-0562-000	12 - 5	QC1-6988-000	10 - 10	QK1-1394-000	01 - 13
CK1-0541-000	12 - 2	QC1-6999-000	09 - 3	QK1-1420-000	06 - 29
FA3-8727-000	07 - 26	QC1-7026-000	02 - 9	QL2-1044-000	07 - 4
FA3-8727-000	10 - 20	QC1-7034-000	10 - 14	QL2-1081-000	10 - 4
FA9-2112-000	09 - 2	QC1-7039-000	07 - 19	QL2-1082-000	10 - 3
FB1-0733-000	01 - 11	QC1-7043-000	10 - 13	QL2-1083-000	10 - 8
FH2-7092-000	01 - 19	QC1-7059-000	08 - 6	QL2-1084-000	10 - 7
NPN	01 -	QC1-7067-000	07 - 23	QL2-1085-000	10 - 6
NPN	01 - 1	QC1-7068-000	07 - 20	QL2-1086-000	08 - 3
NPN	01 - 2	QC1-7070-000	02 - 10	QL2-1087-000	08 - 2
NPN	01 - 2	QC1-7092-000	07 - 14	QL2-1100-000	06 - 2
NPN	01 - 2	QC1-7100-000	06 - 20	QL2-1103-000	06 - 14
NPN	01 - 2	QC1-7119-000	06 - 12	QL2-1104-000	06 - 23
NPN	01 - 2	QC1-7137-000	01 - 12	QL2-1108-000	02 - 12
NPN	01 - 2	QC1-7138-000	03 - 12	QL2-1109-000	02 - 5
NPN	01 - 2	QC1-7141-000	07 - 24	QL2-1110-000	02 - 6
NPN	02 -	QC1-7143-000	03 - 18	QL2-1113-000	08 - 8
NPN	03 -	QC1-7153-000	06 - 27	QL2-1114-000	06 - 25
NPN	04 -	QC1-7156-000	06 - 26	QL2-1115-000	10 - 5
NPN	05 -	QC1-7217-000	02 - 11	QL2-1122-000	01 - 3
NPN	06 -	QC1-7242-000	10 - 15	QL2-1134-000	R1 - 5
NPN	07 -	QC1-7243-000	10 - 16	QL2-1136-000	R1 - 4
NPN	08 -	QC1-7244-000	10 - 17	QM1-0658-000	07 - 9
NPN	09 -	QC1-7250-000	10 - 2	QM1-0666-000	06 - 17
NPN	10 -	QC1-7252-000	10 - 19	QM2-0662-000	06 - 7
NPN	11 -	QC1-7278-000	03 - 8	QM2-2452-000	07 - 11
NPN	12 -	QC1-7302-000	02 - 7	QM2-2458-000	06 - 15
NPN	R1 -	QC1-7303-000	06 - 5	QM2-2470-000	01 - 6
QA2-6161-000	12 - 3	QC1-7307-000	02 - 19	QM2-2475-000	01 - 8
QC1-0008-000	06 - 3	QC1-7313-000	05 - 6	QM2-2476-000	01 - 5
QC1-6847-000	07 - 6	QC1-7358-000	R1 - 7	QM2-2478-000	01 - 7
QC1-6921-000	10 - 9	QC1-7359-000	R1 - 8	QM2-2483-000	04 - 11
QC1-6924-000	03 - 14	QC1-7360-000	R1 - 9	QM2-2484-000	04 - 12
QC1-6925-000	03 - 15	QC1-7368-000	R1 - 1	QM2-2487-000	04 - 7
QC1-6926-000	03 - 16	QE1-1048-000	09 - 1	QM2-2488-000	04 - 1
QC1-6927-000	03 - 17	QE1-1063-000	07 - 18	QM2-2489-000	02 - 15
QC1-6930-000	02 - 1	QE1-1270-000	06 - 9	QM2-2490-000	02 - 16
QC1-6931-000	02 - 2	QE1-1281-000	06 - 28	QM2-2491-000	03 - 2
QC1-6934-000	03 - 4	QE1-1282-000	06 - 18	QM2-2495-000	03 - 5
QC1-6935-000	02 - 3	QE1-2304-000	04 - 14	QM2-2497-000	08 - 7
QC1-6936-000	03 - 3	QE1-2304-000	R1 - 6	QM2-2498-000	08 - 4
QC1-6937-000	03 - 11	QE1-2334-000	01 - 4	QM2-2501-000	09 - 5
QC1-6938-000	03 - 10	QE1-2334-000	10 - 22	QM2-2502-000	07 - 2
QC1-6939-000	02 - 14	QE1-2690-000	06 - 10	QM2-2505-000	08 - 1
QC1-6941-000	03 - 6	QE1-2691-000	06 - 8	QM2-2510-000	07 - 17
QC1-6942-000	02 - 4	QH2-2630-000	01 - 15	QM2-2511-000	07 - 15
QC1-6943-000	03 - 7	QH2-2631-000	01 - 16	QM2-2513-000	07 - 22
QC1-6944-000	03 - 13	QH2-2732-000	01 - 17	QM2-2514-000	07 - 21
QC1-6945-000	02 - 13	QK1-1383-000	04 - 2	QM2-2517-000	05 - 1
QC1-6960-000	01 - 10	QK1-1387-000	08 - 5	QM2-2526-000	07 - 13
QC1-6965-000	02 - 18	QK1-1392-000	01 - 18	QM2-2527-000	03 - 9

# NUMERICAL INDEX

## W8400

PARTS NUMBER	FIGURE & KEY NO.	PARTS NUMBER	FIGURE & KEY NO.	PARTS NUMBER	FIGURE & KEY NO
QM2-2528-000	10 - 18	XA9-0732-000	R1 - 501		
QM2-2530-000	10 - 1	XA9-1501-000	01 - 9		
QM2-2531-000	05 - 2	XB1-2301-406	07 - 501		
QM2-2532-000	06 - 1	XB1-2400-806	06 - 501		
QM2-2535-000	06 - 11	XB1-2400-809	03 - 501		
QM2-2538-000	03 - 2	XB2-8401-009	07 - 503		
QM2-2540-000	06 - 22	XB3-6300-809	10 - 501		
QM2-2542-000	05 - 4	XB4-2400-806	04 - 501		
QM2-2543-000	05 - 3	XB4-5300-807	05 - 502		
QM2-2544-000	02 - 8	XB4-5400-806	07 - 502		
QM2-2545-000	03 - 1	XB4-7301-209	06 - 503		
QM2-2546-000	05 - 5	XB4-7400-809	04 - 502		
QM2-2557-000	09 - 4	XB4-7401-009	06 - 502		
QM2-2561-000	04 - 4	XB4-7401-206	R1 - 502		
QM2-2564-000	R1 - 2	XB4-7402-509	08 - 502		
QM2-2572-000	06 - 31	XB4-7404-009	08 - 501		
QM2-2586-000	R1 - 3	XB5-2400-809	05 - 501		
QM2-2624-000	04 - 5	XB6-7400-609	05 - 503		
QM2-2625-000	04 - 6	XB6-7400-809	09 - 502		
QM2-2626-000	06 - 21	XD2-1100-642	09 - 501		
QM2-2630-000	06 - 4	XD2-3100-152	10 - 502		
QM2-2632-000	04 - 9	XD3-2160-082	07 - 27		
QM2-2633-000	04 - 10	XD3-2200-222	07 - 28		
QM2-2662-000	04 - 8	XF2-4117-360	07 - 7		
QU1-0082-000	07 - 5	XF2-4119-790	07 - 3		
QU1-0083-000	07 - 8	XG9-0453-000	07 - 10		
QU1-0084-000	07 - 12				
QU1-1004-000	06 - 30				
QU1-2169-000	11 - 1				
QU1-2170-000	07 - 1				
QU1-2173-000	07 - 16				
QU1-2175-000	06 - 24				
QU1-2177-000	06 - 19				
QU1-2185-000	03 - 19				
QU1-6016-000	07 - 25				
QY9-0103-000	12 - 1				
WA7-3746-000	04 - 3				
WG8-5624-000	06 - 6				
WG8-5624-000	06 - 13				
WG8-5624-000	06 - 16				
WG8-5624-000	10 - 12				
WG8-5677-000	10 - 11				
XA9-0249-000	07 - 30				
XA9-0732-000	02 - 17				
XA9-0732-000	03 - 20				
XA9-0732-000	04 - 13				
XA9-0732-000	05 - 7				
XA9-0732-000	06 - 32				
XA9-0732-000	07 - 29				
XA9-0732-000	08 - 9				
XA9-0732-000	09 - 6				
XA9-0732-000	10 - 21				



# W8400

120V	Q51-1312-000
220V-240V	Q51-1314-000
JP	Q51-1317-000
	Q55-2020-000



# Contents

01	PRINTER & ACCESSORIES .....	2-1
02	COVER(1) .....	2-3
03	COVER(2) .....	2-5
04	ELECTRICAL PART .....	2-7
05	INK TANK & PURGE UNIT .....	2-9
06	CARRIAGE UNIT .....	2-11
07	FEED MOTOR ASS'Y .....	2-14
08	AIR FLOW FAN UNIT .....	2-17
09	PINCH ROLLER UNIT .....	2-19
10	PLATEN & FEED ROLLER .....	2-21
11	LINEAR SCALE .....	2-23
12	TOOL .....	2-25
R1	STAND UNIT .....	2-27



# FIGURE 01 PRINTER & ACCESSORIES

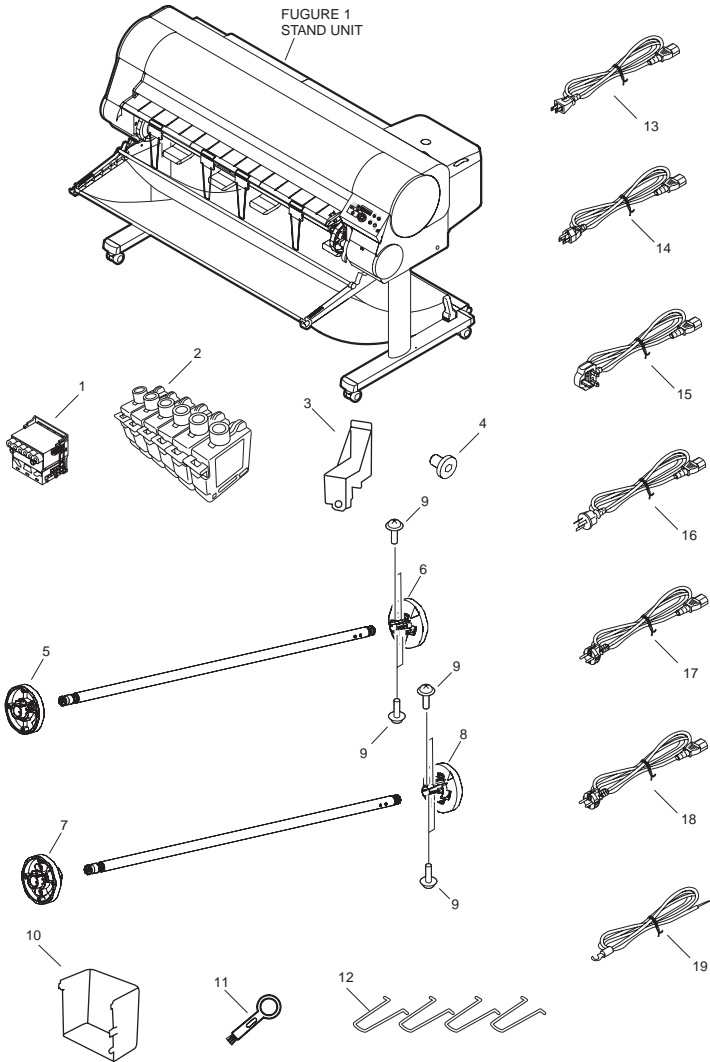


FIGURE & KEY NO.	PARTS NUMBER	RANK	Q'TY	DESCRIPTION	SERIAL NUMBER/REMARKS	SVC
Fig.01	NPN		RF	PRINTER & ACCESSORISE		
1	NPN		RF	PRINT HEAD		
2	NPN		RF	INK TANK(M)		
2	NPN		RF	INK TANK(PM)		
2	NPN		RF	INK TANK(Y)		
2	NPN		RF	INK TANK(MBK)		
2	NPN		RF	INK TANK(BK)		
2	NPN		RF	INK TANK(PC)		
2	NPN		RF	INK TANK(C)		
3	QL2-1122-000		1	BELT, STOPPER		
4	QE1-2334-000		1	SCREW, ALLEN, M4X6		
5	QM2-2476-000		1	2 INCHI DRIVE SPOOL UNIT LEFT		
6	QM2-2470-000		1	2 INCH DRAIVE SPOOL UNIT RIGHT		
7	QM2-2478-000		1	3 INCH DRIVE SPOOL UNIT LEFT		
8	QM2-2475-000		1	3 INCI DRIVE SPOOL UNIT RIGHT		
9	XA9-1501-000		8	SCREW, RS, M3X10		
10	QC1-6960-000		1	POCKET		
11	FB1-0733-000		1	BRUSH, CLEANER		
12	QC1-7137-000		1	BAR, DELIVERY SUPPORT		
13	QK1-1394-000		1	CORD, POWER	100V	
14	QK1-1393-000		1	CORD, POWER	120V(UL)	
15	QH2-2630-000		1	CORD, POWER	240V(UK)	
16	QH2-2631-000		1	CORD, POWER	240V(AUS)	
17	QH2-2732-000		1	CORD, POWER	240V(KOR)	
18	QK1-1392-000		1	CORD, POWER	220V-240V	
19	FH2-7092-000		1	WIRE, GROUNDING		

# FIGURE 02 COVER(1)

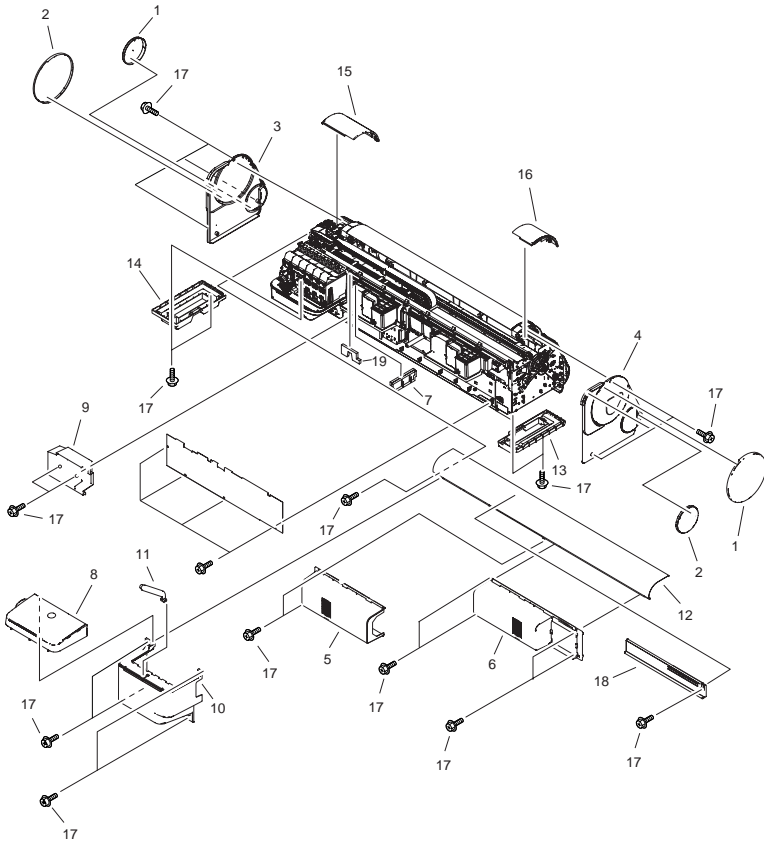


FIGURE & KEY NO.	PARTS NUMBER	R A N K	Q'TY	DESCRIPTION	SERIAL NUMBER/ REMARKS	S V C
Fig.02	NPN		RF	COVERS(2)		
1	QC1-6930-000		2	COVER, CIRCLE(L)		
2	QC1-6931-000		2	COVER, CIRCLE(S)		
3	QC1-6935-000		1	COVER, SIDE,RIGHT		
4	QC1-6942-000		1	COVER, SIDE, LEFT		
5	QL2-1109-000		1	REAR COVER UNIT(R)		
6	QL2-1110-000		1	REAR COVER UNIT(L)		
7	QC1-7302-000		2	INK ABSORBER		
8	QM2-2544-000		1	TANK COVER UNIT		
9	QC1-7026-000		1	COVER, INTERFACE		
10	QC1-7070-000		1	COVER, TANK		
11	QC1-7217-000		1	STOPPER, COVER		
12	QL2-1108-000		1	UPPER REAR COVER UNIT		
13	QC1-6945-000		1	COVER(L), BOTTOM		
14	QC1-6939-000		1	COVER(R), BOTTOM		
15	QM2-2489-000		1	RIGHT COVER UNIT		
16	QM2-2490-000		1	LEFT COVER UNIT		
17	XA9-0732-000		24	SCREW, RS, M4		
18	QC1-6965-000		1	COVER, TANK FRONT		
19	QC1-7307-000		1	INK ABSORBER		



FIGURE 03  
COVER(2)

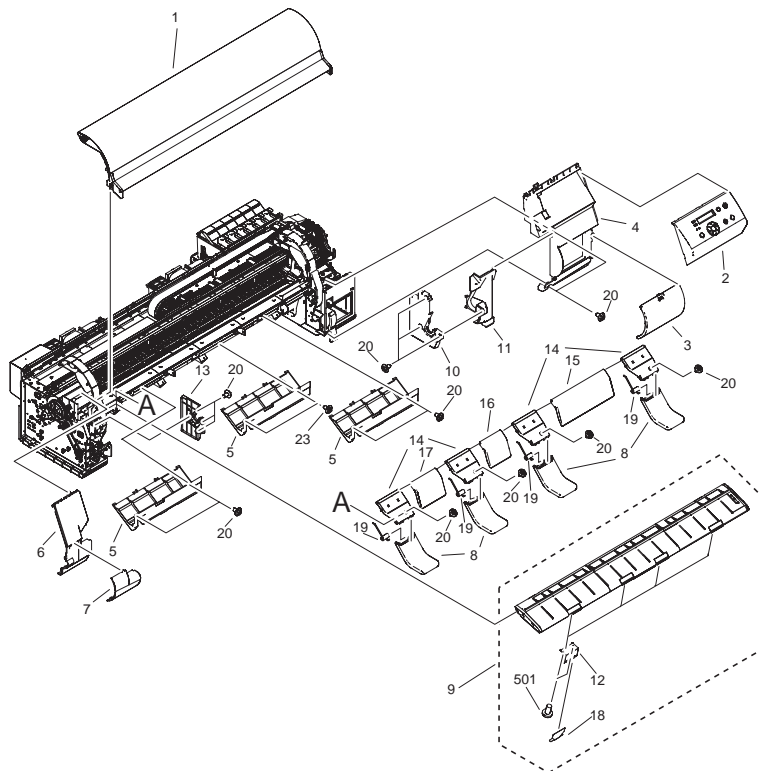


FIGURE & KEY NO.	PARTS NUMBER	RANK	Q'TY	DESCRIPTION	SERIAL NUMBER/REMARKS	SVC
Fig.03	NPN		RF	COVERS(2)		
1	QM2-2545-000		1	UPPER COVER UNIT		
2	QM2-2491-000		1	OPERATION PANEL UNIT	ENGLISH	
2	QM2-2538-000		1	OPERATION PANEL UNIT	JAPANESE	
3	QC1-6936-000		1	COVER, MAINTENANCE		
4	QC1-6934-000		1	COVER, FRONT, RIGHT		
5	QM2-2495-000		3	FEED UPPER GUIDE UNIT		
6	QC1-6941-000		1	COVER, FRONT, LEFT		
7	QC1-6943-000		1	COVER, ROUND		
8	QC1-7278-000		4	ARM, LOWER GUIDE		
9	QM2-2527-000		1	ROLL PAPER COVER UNIT		
10	QC1-6938-000		1	COVER(R), BLIND		
11	QC1-6937-000		1	COVER, SPOOL RECEIVE		
12	QC1-7138-000		4	MOUNT, ASSIST, DELIVERY		
13	QC1-6944-000		1	COVER(L), BLIND		
14	QC1-6924-000		4	GUIDE A, FEED LOWER		
15	QC1-6925-000		1	GUIDE B, FEED LOWER		
16	QC1-6926-000		1	GUIDE C, FEED LOWER		
17	QC1-6927-000		1	GUIDE D, FEED LOWER		
18	QC1-7143-000		4	SHEET, DELIVERY ASSIST		
19	QU1-2185-000		4	SPRING, TORSION		
20	XA9-0732-000		17	SCREW, RS, M4		
501	XB1-2400-809		8	SCREW, BINDING HEAD M4X8		

FIGURE 04  
ELECTRICAL PART

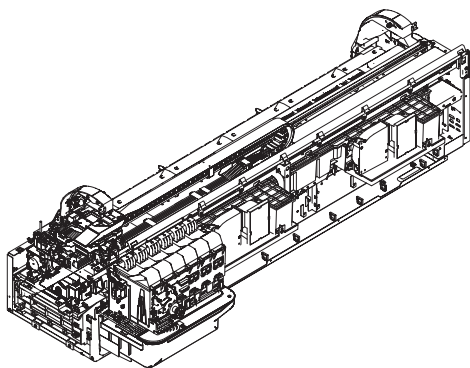


FIGURE & KEY NO.	PARTS NUMBER	R A N K	Q'TY	DESCRIPTION	SERIAL NUMBER/ REMARKS	S V C
Fig.04	NPN		RF	ELECTRICAL PART		
1	QM2-2488-000		1	CONTROLLER ASS'Y		
2	QK1-1383-000		1	POWER SUPPLY ASS'Y		
3	WA7-3746-000		1	IC,SMD-N12866N1P-H, SO-DIMM		
4	QM2-2561-000		1	OPTION INLET UNIT		
5	QM2-2624-000		1	ENGINE CONTROLLER ASS'Y		
6	QM2-2625-000		1	MOTOR DRIVER UNIT		
7	QM2-2487-000		1	INLET UNIT		
8	QM2-2662-000		1	M/C BUFFER ASS'Y		
9	QM2-2632-000		1	CABLE ASS'Y		
10	QM2-2633-000		1	POWER SUPPLY CABLE ASS'Y		
11	QM2-2483-000		1	IEEE1394 I/F BOARD	OPTION	
12	QM2-2484-000		1	NETWORK I/F BOARD	OPTION EXCEPT USA	
13	XA9-0732-000		9	SCREW, RS, M4		
14	QE1-2304-000		2	SCREW, ALLEN, M4X8		
501	XB4-2400-806		13	SCREW, MACHINE M4X8		
502	XB4-7400-809		1	SCREW, M4X8		

# FIGURE 05 INK TANK & PURGE UNIT

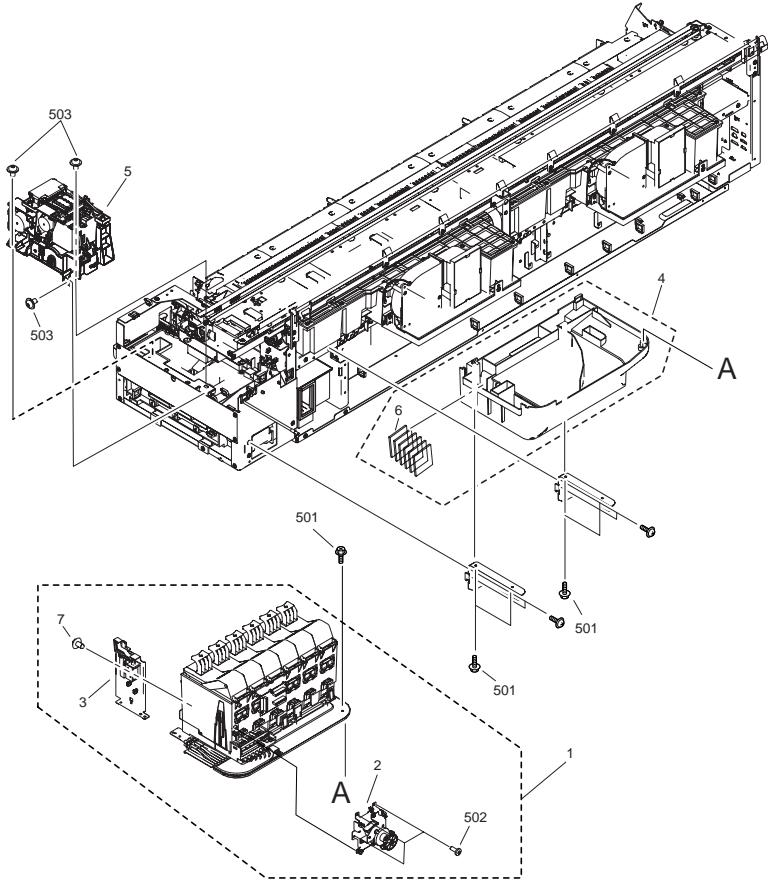


FIGURE & KEY NO.	PARTS NUMBER	RANK	Q'TY	DESCRIPTION	SERIAL NUMBER/REMARKS	SVC
Fig.05	NPN		RF	INK TANK & PURGE UNIT		
1	QM2-2517-000		1	INK TANK UNIT		
2	QM2-2531-000		1	VALVE MOTOR UNIT		
3	QM2-2543-000		1	TANK COVER LOCK UNIT		
4	QM2-2542-000		1	INK SUPPLY MOUNY UNIT		
5	QM2-2546-000		1	PURGE UNIT		
6	QC1-7313-000		13	INK ABSORBER		
7	XA9-0732-000		3	SCREW,RS,M4		
501	XB5-2400-809		5	SCREW		
502	XB4-5300-807		3	SCREW		
503	XB6-7400-609		3	SCREW, MACHINE M4X6		

# FIGURE 06 CARRIAGE UNIT

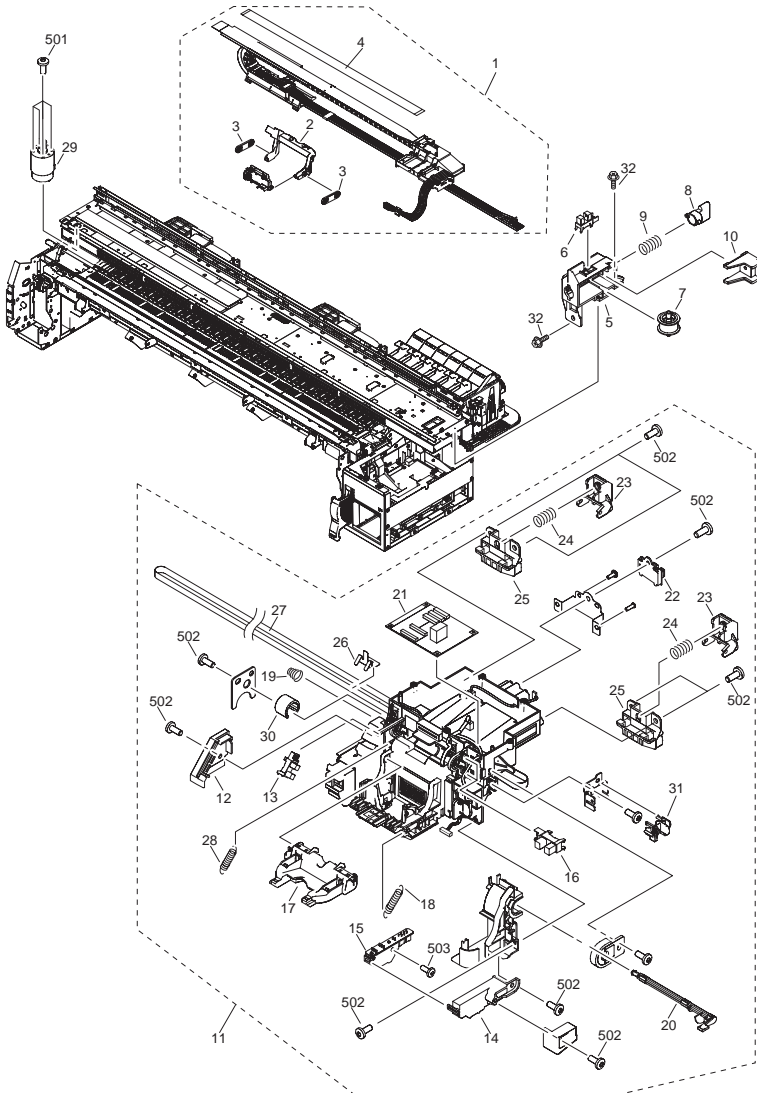


FIGURE & KEY NO.	PARTS NUMBER	R A N K	Q'TY	DESCRIPTION	SERIAL NUMBER/ REMARKS	S V C
Fig.06	NPN		RF	CARRIAGE UNIT		
1	QM2-2532-000		1	INK TUBE UNIT		
2	QL2-1100-000		1	PRINRHEAD LOCK LEVER		
3	QC1-0008-000		2	LEVER, TUBE		
4	QM2-2630-000		1	FLEXIBLE CABLE ASS'Y		
5	QC1-7303-000		1	MOUNT, IDLER ROLLER		
6	WG8-5624-000		1	PHOTO-INTERRUPTER, TL TOSHIBA		
7	QM2-0662-000		1	IDLER ROLLER ASS'Y		
8	QE1-2691-000		1	LEVER, IDLER ROLLER		
9	QE1-1270-000		1	SPRING, COIL		
10	QE1-2690-000		1	GUIDE, IDLER ROLLER		
11	QM2-2535-000		1	CARRIAGE UNIT		
12	QC1-7119-000		1	COVER, SENSOR		
13	WG8-5624-000		1	PHOTO-INTERRUPTER, TL TOSHIBA		
14	QL2-1103-000		1	SENSOR COVER UNIT		
15	QM2-2458-000		1	SENSOR UNIT		
16	WG8-5624-000		2	PHOTO-INTERRUPTER, TL TOSHIBA		
17	QM1-0666-000		1	HEAD LEVER UNIT		
18	QE1-1282-000		1	SPRING, HOOK END COIL		
19	QU1-2177-000		1	SPRING, COIL		
20	QC1-7100-000		1	LEVER, HEAD GAP		
21	QM2-2626-000		1	CARRIAGE RELAY ASS'Y		
22	QM2-2540-000		1	SENSOR UNIT		
23	QL2-1104-000		2	IDLER ROLLER HOLDER UNIT		
24	QU1-2175-000		2	SPRING, COIL		
25	QL2-1114-000		2	IDLER ROLLER HOLDER UNIT		
26	QC1-7156-000		2	STOPPER, BELT		
27	QC1-7153-000		1	BELT, CARRIAGE		
28	QE1-1281-000		1	SPRING, HOOK END COIL		
29	QK1-1420-000		1	IDLER ROLLER ASS'Y		
30	QU1-1004-000		2	BEARING		
31	QM2-2572-000		1	RAIL CLEANER ASS'Y		



FIGURE & KEY NO.	PARTS NUMBER	R A N K	Q'TY	DESCRIPTION	SERIAL NUMBER/ REMARKS	S V C
32	XA9-0732-000		2	SCREW,RS,M4		
501	XB1-2400-806		4	SCREW, NACH., TRUSS HEAD, M4X6		
502	XB4-7401-009		10	SCREW,TAPPING, M4X10		
503	XB4-7301-209		1	SCREW, TAPPING, M3X12		

FIGURE 07  
FEED MOTOR ASS'Y

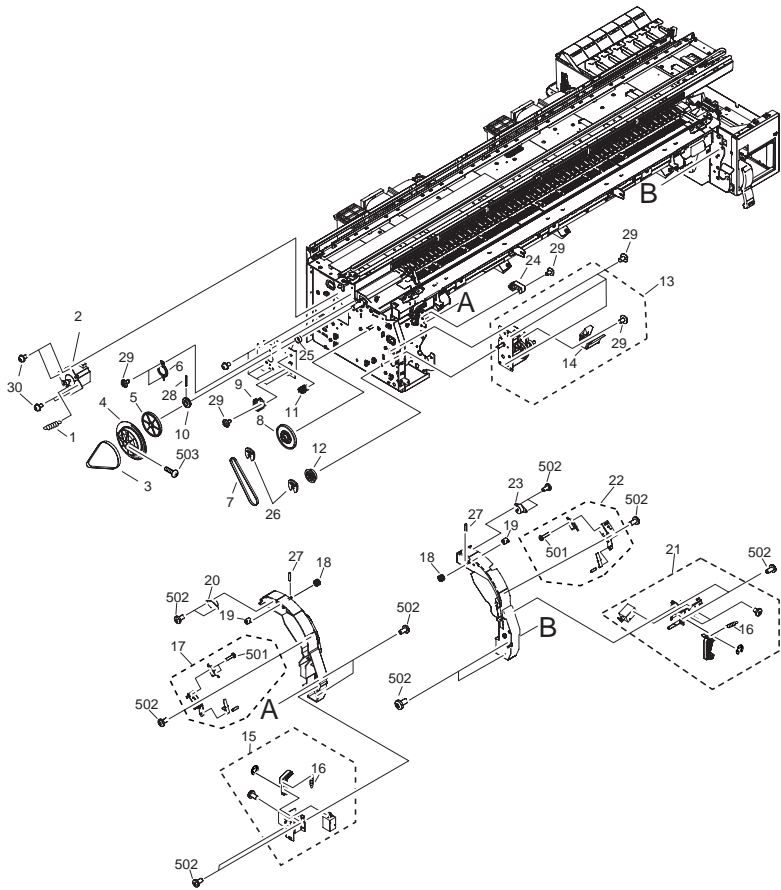


FIGURE & KEY NO.	PARTS NUMBER	R A N K	Q'TY	DESCRIPTION	SERIAL NUMBER/ REMARKS	S V C
Fig.07	NPN		RF	FEED MOTOR ASS'Y		
1	QU1-2170-000		1	SPRING, HOOK END CPIL		
2	QM2-2502-000		1	FEED MOTOR ASS'Y		
3	XF2-4119-790		1	BELT,FEED		
4	QL2-1044-000		1	ENCODER SLIT ASS'Y		
5	QU1-0082-000		1	GEAR 76T		
6	QC1-6847-000		1	SUPPORT, BEARING		
7	XF2-4117-360		1	BELT, DRAIVE		
8	QU1-0083-000		1	GEAR, PULLY 76T/36T		
9	QM1-0658-000		1	FEED ROLLER SENSOR UNIT		
10	XG9-0453-000		1	BEARING, BALL 6902ZZNR		
11	QM2-2452-000		1	FEED ROLLER HP SENSOR UNIT		
12	QU1-0084-000		1	GEAR 56T		
13	QM2-2526-000		1	FEED MOTOR UNIT		
14	QC1-7092-000		1	COVER, GEAR		
15	QM2-2511-000		1	UPPER COVER LOCK UNIT L		
16	QU1-2173-000		2	SPRING, HOOK END COIL		
17	QM2-2510-000		1	UPPER COVER SWITCH UNIT L		
18	QE1-1063-000		2	GEAR 14T		
19	QC1-7039-000		2	COUOLING, DAMPER		
20	QC1-7068-000		1	DAMPER, LEAF		
21	QM2-2514-000		1	UPPER COVER LOCK UNIT R		
22	QM2-2513-000		1	UPPER COVER SWITCHUNIT R		
23	QC1-7067-000		1	DAMPER, RIGHT		
24	QC1-7141-000		1	STOPPER, COVER		
25	QU1-6016-000		1	SPACER		
26	FA3-8727-000		3	A-TYPE RETAINER		
27	XD3-2160-082		2	PIN, DOWELL, 1.6X8		
28	XD3-2200-222		1	SPRING, DOWEL		
29	XA9-0732-000		8	SCREW, RS, M4		
30	XA9-0249-000		4	SCREW, M4X8		
501	XB1-2301-406		2	SCREW,M3X14		

FIGURE & KEY NO.	PARTS NUMBER	R A N K	Q'TY	DESCRIPTION	SERIAL NUMBER/ REMARKS	S V C
502	XB4-5400-806		14	SCREW, P, M4X8		
503	XB2-8401-009		1	BINDING HEAD WS-SCREW		

# FIGURE 08 AIR FLOW FAN UNIT

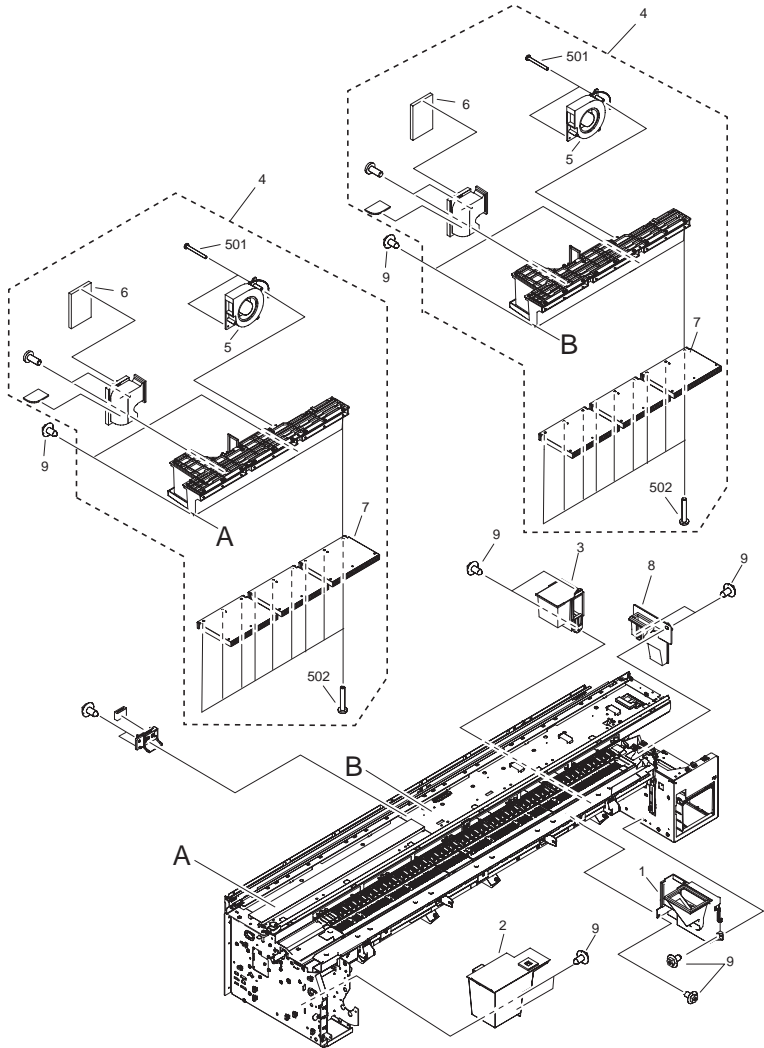


FIGURE & KEY NO.	PARTS NUMBER	RANK	Q'TY	DESCRIPTION	SERIAL NUMBER/REMARKS	SVC
Fig.08	NPN		RF	AIR FLOW FAN UNIT		
1	QM2-2505-000		1	SUCTION FAN UNIT		
2	QL2-1087-000		1	WASTE ABSORBER UNIT		
3	QL2-1086-000		1	DUCT ASSY		
4	QM2-2498-000		2	FAN UNIT		
5	QK1-1387-000		2	FAN, MIST		
6	QC1-7059-000		2	FILTER, MIST		
7	QM2-2497-000		6	DUCT UNIT		
8	QL2-1113-000		1	DUCT ASSY		
9	XA9-0732-000		15	SCREW,RS,M4		
501	XB4-7404-009		4	SCREW,M4X40		
502	XB4-7402-509		18	SCREW,TAPPING,TRUSSHEAD,M4X25		

# FIGURE 09 PINCH ROLLER UNIT

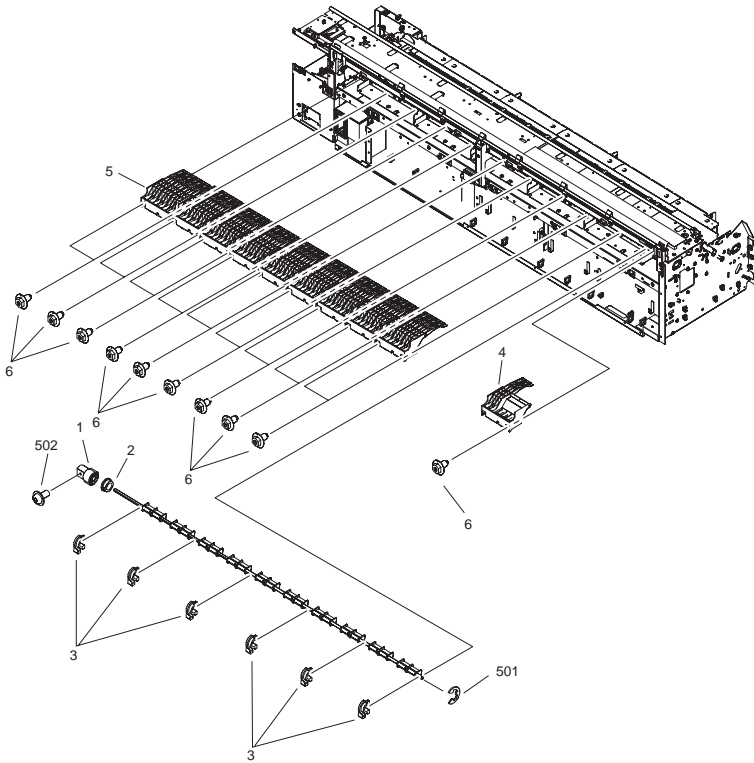


FIGURE & KEY NO.	PARTS NUMBER	RANK	Q'TY	DESCRIPTION	SERIAL NUMBER/REMARKS	SVC
Fig.09	NPN		RF	PINCH ROLLER UNIT		
1	QE1-1048-000		1	GEAR		
2	FA9-2112-000		1	BUSHING		
3	QC1-6999-000		5	BUSHING		
4	QM2-2557-000		1	PINCH ROLLER UNIT B		
5	QM2-2501-000		9	PINCH ROLLER UNIT A		
6	XA9-0732-000		20	SCREW, RS, M4		
501	XD2-1100-642		1	E-TYPE RING ,M6.4		
502	XB6-7400-809		1	SCREW,TP M4X8		



**FIGURE 10**  
**PLATEN & FEED ROLLER**

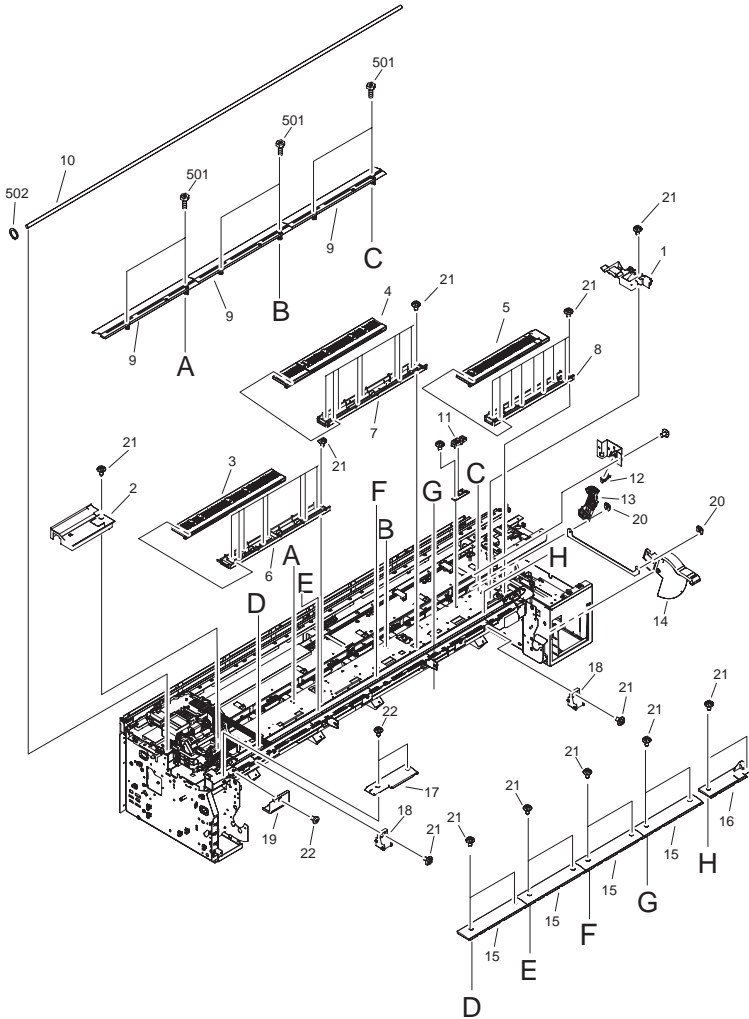


FIGURE & KEY NO.	PARTS NUMBER	R A N K	Q'TY	DESCRIPTION	SERIAL NUMBER/ REMARKS	S V C
Fig.10	NPN		RF	PLATEN & FEED ROLLER		
1	QM2-2530-000		1	INK PRE-FIRE PLATEN UNIT R		
2	QC1-7250-000		1	PLATEN, INK PRE-FIRE, LEFT		
3	QL2-1082-000		1	PLATEN L		
4	QL2-1081-000		1	PLATE C		
5	QL2-1115-000		1	PLATEN, RIGHT		
6	QL2-1085-000		1	BASE, PLATEN L		
7	QL2-1084-000		1	BASE, PLATEN C		
8	QL2-1083-000		1	BASE, PLATEN R		
9	QC1-6921-000		3	PLATE, REAR		
10	QC1-6988-000		1	ROLLER, FEED		
11	WG8-5677-000		1	PHOTO-INTERRUPTER, GP2		
12	WG8-5624-000		1	PHOTO-INTERRUPTER, TL		
13	QC1-7043-000		1	GEAR, RELEASE		
14	QC1-7034-000		1	LEVER, RELEASE		
15	QC1-7242-000		4	GUIDE, DELIVERY		
16	QC1-7243-000		1	GUIDE, DELIVERY, RIGHT		
17	QC1-7244-000		1	GUIDE, DELIVERY, LEFT		
18	QM2-2528-000		2	COVER LOCK UNIT		
19	QC1-7252-000		1	COVER, CUTTER CABLE		
20	FA3-8727-000		2	RING, RETAINING		
21	XA9-0732-000		44	SCREW,RS,M4		
22	QE1-2334-000		1	SREW, ALLEN ,M4X6		
501	XB3-6300-809		6	SCREW, RS, M3X8		
502	XD2-3100-152		1	RING, C		

FIGURE 11  
LINEAR SCALE

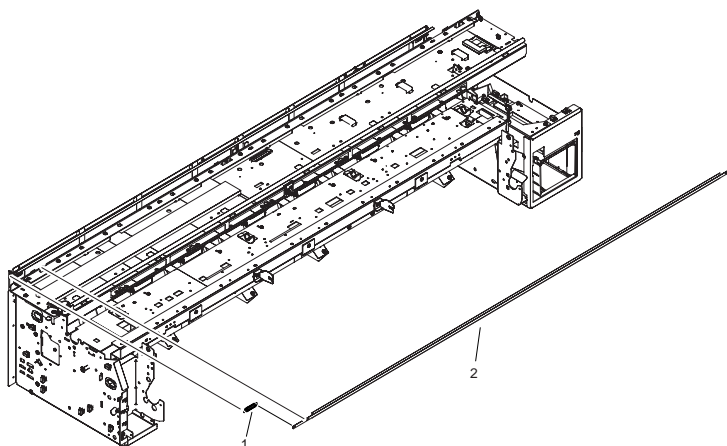


FIGURE & KEY NO.	PARTS NUMBER	RANK	Q'TY	DESCRIPTION	SERIAL NUMBER/REMARKS	SVC
Fig.11	NPN		RF	LINEAR SCALE		
1	QU1-2169-000		1	SPRING, HOOK END COIL		
2	QC1-6983-000		1	SCALE LONEAR		

# FIGURE 12 TOOL

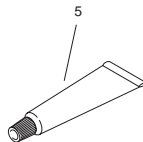
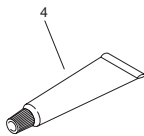
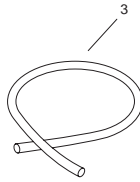
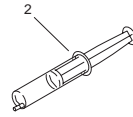
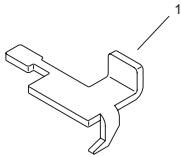


FIGURE & KEY NO.	PARTS NUMBER	RANK	Q'TY	DESCRIPTION	SERIAL NUMBER/REMARKS	SVC
Fig.12	NPN		RF	TOOL		
1	QY9-0103-000		1	COVER SWITCH TOOL		
2	CK1-0541-000		1	SYRINGE		
3	QA2-6161-000		1	TUBE		
4	CK-0551-020		1	LUBE, PERMALUB G NO.2		
5	CK-0562-000		1	GREASE, MOLYKOTE PG-641		

# FIGURE R1 STAND UNIT

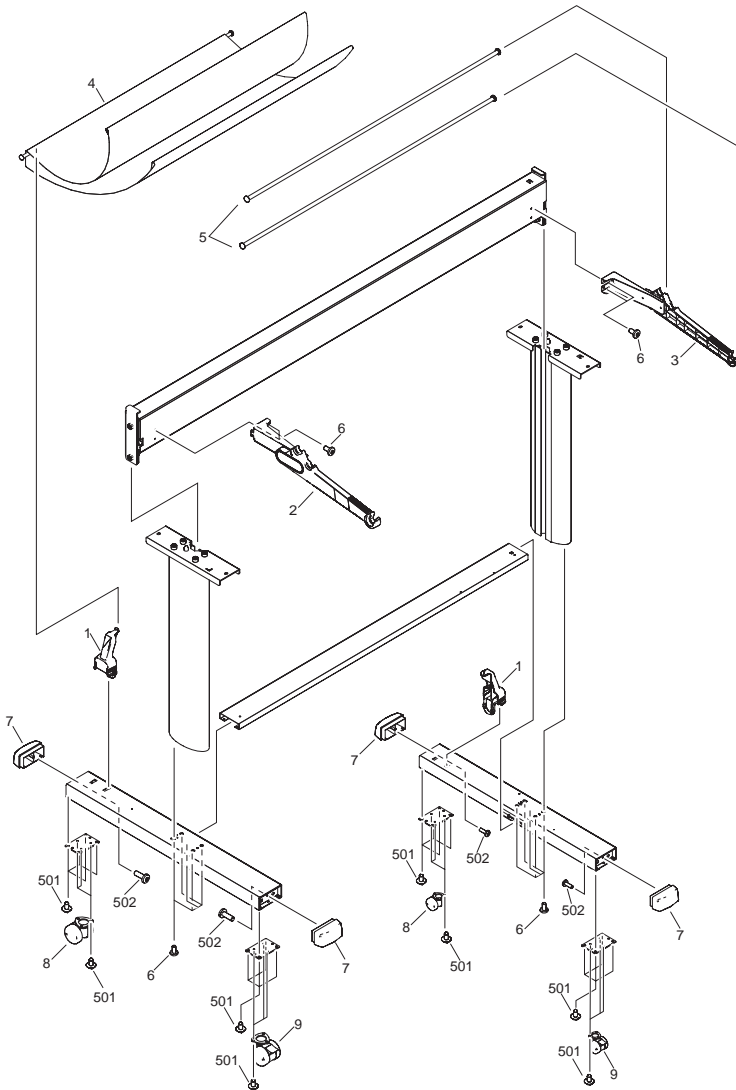


FIGURE & KEY NO.	PARTS NUMBER	R A N K	Q'TY	DESCRIPTION	SERIAL NUMBER/ REMARKS	S V C
Fig.R1	NPN		RF	STAND UNIT	STAND UNIT	
1	QC1-7368-000		2	HOLDER, REAR		
2	QM2-2564-000		1	BASKET ARM UNIT		
3	QM2-2586-000		1	BASKET ARM UNIT R		
4	QL2-1136-000		1	BASKET		
5	QL2-1134-000		2	BASKET ROD		
6	QE1-2304-000		14	BOLT, M4X8		
7	QC1-7358-000		4	CAP, FOOT		
8	QC1-7359-000		2	CASTER		
9	QC1-7360-000		2	CASTER		
501	XA9-0732-000		28	SCREW, RS, M4		
502	XB4-7401-206		4	SCREW, SELF-TAPPING, P.HEAD		



Prepared by  
OFFICE IMAGING PRODUCTS QUALITY ASSURANCE CENTER  
CANON INC.

**Canon**