

PARTS CATALOG

**imageCLASS MF4150/
MF4140/MF4122/MF4120/i-
SENSYS MF4150/MF4140/
MF4120**

Canon

Jun 1 2007

PREFACE

This Parts Catalog contains listings of parts used

Diagrams are provided with the listings to aid the service technician in identifying clearly, the item to be ordered.

Whenever ordering parts, consult this Parts Catalog for all of the information pertaining to each item. Be sure to include, in the Parts Request, the full item description, the item part number, and the quantity.

COPYRIGHT (C) 1999 CANON INC.

Use of this manual should be strictly supervised to avoid disclosure of confidential information.

Contents

NUMERICAL INDEX

imageCLASS MF4150/MF4140/MF4122/MF4120/i-SENSYS MF4150/
MF4140/MF4120(Numerical Index)..... 1-1

imageCLASS MF4150/MF4140/MF4122/MF4120/i-SENSYS MF4150/
MF4140/MF4120(Parts Catalog)

A	ASSEMBLY LOCATION DIAGRAM	2-1
001	ACCESSORIES	2-2
100	EXTERNAL COVERS, PANELS, ETC.	2-3
101	INTERNAL COMPONENTS 1	2-6
102	INTERNAL COMPONENTS 2	2-8
103	INTERNAL COMPONENTS 3	2-10
104	BASE PLATE ASS'Y	2-13
310	PAPER PICK-UP ASS'Y	2-15
400	READER ASS'Y	2-17
810	FIXING ASS'Y	2-19
A10	ADF ASS'Y (MF4150/4130)	2-21

NUMERICAL INDEX

imageCLASS MF4150/MF4140/MF4122/MF4120/i-SENSYS MF4150/MF414

PARTS NUMBER	FIGURE & KEY NO.	PARTS NUMBER	FIGURE & KEY NO.	PARTS NUMBER	FIGURE & KEY NO
FC5-4820-000	100 - 13	FC7-3742-000	A10 - 2	FM2-8867-000	400 -
FC6-5204-000	100 - 1	FC7-3743-000	100 - 6	FM2-8868-000	400 - 10
FC6-5210-000	102 - 5	FC7-3744-000	100 - 7	FM2-8869-000	100 - 21
FC6-5210-000	103 - 22	FC7-3751-000	100 - 15	FM2-8870-000	100 - 16
FC7-3544-000	A10 - 1	FC7-3752-000	100 - 15	FM2-8871-000	310 -
FC7-3548-000	A10 - 10	FC7-3753-000	100 - 15	FM2-8872-000	310 - 2
FC7-3549-000	A10 - 2	FC7-3764-010	100 - 29	FM2-8874-000	101 - 6
FC7-3553-000	400 - 12	FC7-3765-000	102 -	FM2-8876-000	104 - 1
FC7-3554-000	100 - 4	FC7-3766-000	100 -	FM2-8877-000	104 - 2
FC7-3557-000	810 - 1	FC7-3767-000	102 -	FM2-8879-000	103 - 12
FC7-3558-000	101 - 1	FC7-3788-000	100 - 28	FM2-8882-000	102 - 3
FC7-3561-010	100 - 6	FC7-3813-000	310 - 11	FM2-8883-000	100 - 17
FC7-3566-010	100 - 7	FC7-3817-000	100 - 30	FM2-8884-010	102 - 13
FC7-3573-000	100 - 27	FC7-3827-000	100 -	FM2-8885-000	810 - 8
FC7-3596-000	100 - 23	FK2-1311-000	101 - 13	FM2-8890-000	810 -
FC7-3597-000	100 - 24	FK2-1313-000	101 - 12	FM2-8891-000	810 -
FC7-3598-000	100 - 25	FK2-1314-000	101 - 14	FM2-8892-000	810 -
FC7-3615-000	400 - 1	FK2-1316-000	101 - 16	FM2-8897-000	100 - 21
FC7-3616-000	400 - 2	FK2-1317-000	101 - 15	FM2-8898-000	100 - 21
FC7-3623-000	400 - 3	FK2-2869-000	400 - 6	FM2-8899-000	100 - 21
FC7-3630-000	400 - 4	FK2-3049-000	103 - 48	FM2-8900-000	100 - 21
FC7-3637-000	A10 - 8	FK2-3492-000	101 - 9	FM2-8901-000	100 - 21
FC7-3638-000	100 - 11	FK2-3494-000	101 - 9	FM2-8902-000	100 - 21
FC7-3639-000	100 - 18	FK2-3502-000	101 - 9	FM2-8903-000	100 - 21
FC7-3641-000	810 - 2	FK2-3506-000	103 - 39	FM2-8904-000	100 - 21
FC7-3642-000	810 - 3	FK2-3508-000	310 - 1	FM2-8905-000	100 - 21
FC7-3643-000	810 - 4	FK2-3510-000	103 - 11	FM2-8906-000	100 - 21
FC7-3644-000	810 - 5	FK2-3516-000	400 - 7	FM2-8907-000	100 - 5
FC7-3645-000	810 - 6	FK2-3517-000	400 - 8	FM2-8908-000	100 - 22
FC7-3646-000	102 - 7	FK2-3698-000	103 - 5	FM2-8910-000	104 - 3
FC7-3647-000	103 - 20	FK2-3699-000	103 - 5	FM2-8911-000	310 - 3
FC7-3648-000	100 - 9	FK2-3702-000	103 - 42	FM2-8912-000	101 - 5
FC7-3649-000	100 - 10	FK2-3703-000	103 - 42	FM2-8913-000	400 -
FC7-3652-000	810 - 7	FK2-3704-000	103 - 42	FM2-8914-000	101 - 7
FC7-3653-000	103 - 21	FK2-4389-000	001 - 4	FM2-8915-000	810 - 9
FC7-3656-000	100 - 19	FK2-4390-000	101 - 18	FM2-8916-000	810 - 9
FC7-3657-000	100 - 20	FK2-4391-000	001 - 3	FM2-8917-000	810 - 9
FC7-3666-000	102 - 4	FK2-4558-000	001 - 1	FM2-8918-000	100 - 21
FC7-3679-000	101 - 2	FK2-4560-000	001 - 1	FM2-8919-000	100 - 21
FC7-3690-000	103 - 8	FK2-4561-000	001 - 7	FM2-8920-000	100 - 21
FC7-3700-000	102 - 2	FK2-4647-000	001 - 1	FM2-8922-000	100 - 21
FC7-3702-000	A10 - 9	FK2-5232-000	101 -	FM2-8923-000	100 - 8
FC7-3710-000	100 - 11	FK2-5233-000	001 - 1	FM2-8924-000	100 - 8
FC7-3711-000	100 - 11	FK2-5790-000	103 - 42	FM2-9907-000	102 - 6
FC7-3712-000	100 - 11	FL2-5620-000	100 - 3	FM2-9909-000	102 - 12
FC7-3713-000	400 - 5	FL2-5621-000	400 - 9	FM2-9910-000	101 - 8
FC7-3714-000	100 - 12	FL2-5626-000	100 - 2	FM2-9911-000	101 - 8
FC7-3726-000	100 - 26	FL2-5629-000	101 - 3	FM2-9912-000	101 - 8
FC7-3727-000	101 - 17	FM2-8861-000	A10 - 4	FM2-9914-000	101 - 10
FC7-3728-000	100 - 13	FM2-8862-000	A10 - 5	FM2-9916-000	101 - 11
FC7-3729-000	100 - 14	FM2-8864-000	A10 - 6	FM2-9925-000	103 - 49
FC7-3741-000	A10 - 1	FM2-8865-000	A10 - 7	FM2-9926-000	103 - 50

NUMERICAL INDEX

imageCLASS MF4150/MF4140/MF4122/MF4120/i-SENSYS MF4150/MF4140

PARTS NUMBER	FIGURE & KEY NO.	PARTS NUMBER	FIGURE & KEY NO.	PARTS NUMBER	FIGURE & KEY NO.
FM2-9929-000	103 - 51	RC1-2066-000	810 - 12		
FM3-0255-000	810 - 10	RC1-2067-000	810 - 13		
FM3-2185-000	103 - 5	RC1-2079-000	810 - 14		
FM3-2186-000	103 - 5	RC1-2097-000	810 - 15		
FU5-1804-000	102 - 9	RC1-2098-000	810 - 16		
FU5-1805-000	102 - 10	RC1-2139-000	810 - 17		
FU6-2254-000	103 - 27	RC1-3579-000	103 - 26		
FU6-2255-000	103 - 28	RC1-5550-000	310 - 15		
FU6-2255-000	310 - 14	RC1-5551-000	310 - 16		
FU6-2875-000	810 - 11	RC1-5552-000	310 - 17		
FU7-0538-000	103 - 29	RC1-5553-000	310 - 18		
FU7-0539-000	103 - 30	RC1-5572-000	810 - 18		
FU7-0540-000	103 - 31	RK2-0777-000	103 - 24		
FU7-0541-000	103 - 23	RL1-0266-000	310 - 19		
FU7-0542-000	103 - 32	RL1-0268-000	310 - 20		
FU7-0543-000	103 - 33	RM1-2046-000	310 - 21		
FU7-0544-000	103 - 25	RU5-0174-000	103 - 14		
FU7-0545-000	103 - 34	RU5-0175-000	103 - 15		
FU7-0546-000	103 - 40	RU5-0176-000	103 - 16		
FU7-0547-000	103 - 41	RU5-0179-000	103 - 19		
HB1-4978-000	001 - 5	RU5-0180-000	310 - 22		
HC1-2012-000	001 - 6	RU5-0312-000	103 - 35		
HC1-2034-000	001 - 2	RU5-0313-000	103 - 36		
HH2-2824-000	103 - 43	RU5-0314-000	103 - 37		
HK1-0544-000	103 - 46	RU5-0315-000	103 - 38		
HK1-0547-000	103 - 44	RU5-0503-000	103 - 10		
HK1-0550-000	103 - 45	RU5-0505-000	103 - 13		
HK1-0559-000	103 - 47	RU5-0506-000	103 - 17		
NPN	001 -	RU5-0523-000	810 - 19		
NPN	100 -	RU5-2178-000	810 - 20		
NPN	101 -	RU5-2492-000	102 - 11		
NPN	102 -	XA9-0476-000	400 - 11		
NPN	103 -	XA9-0476-000	A10 - 3		
NPN	104 -	XA9-1420-000	101 - 4		
NPN	A10 -	XA9-1495-000	102 - 14		
RA0-1019-000	103 - 1	XA9-1495-000	103 - 9		
RA0-1172-000	103 - 18	XA9-1495-000	104 - 4		
RC1-1953-000	103 - 2	XA9-1501-000	102 - 8		
RC1-1954-000	103 - 3	XA9-1503-000	310 - 23		
RC1-1955-000	103 - 4	XB2-8300-609	810 - 501		
RC1-1957-000	103 - 6	XB4-5401-000	400 - 501		
RC1-1959-000	103 - 7	XB4-5401-009	101 - 501		
RC1-1960-000	310 - 4	XB4-5401-009	310 - 501		
RC1-1990-000	310 - 5	XB4-5401-009	A10 - 501		
RC1-1993-000	310 - 6	XB4-7300-807	100 - 501		
RC1-1994-000	310 - 7	XB4-7300-807	A10 - 502		
RC1-1999-000	102 - 1				
RC1-2012-000	310 - 8				
RC1-2040-000	310 - 9				
RC1-2041-000	310 - 10				
RC1-2043-000	310 - 12				
RC1-2044-000	310 - 13				

imageCLASS MF4150/MF4140/ MF4122/MF4120/i-SENSYS MF4150/ MF4140/MF4120(Parts Catalog)

imageCLASS MF4150

120V TW	F14-9201-000	KVU
120V US	F14-9231-000	JVM
120V CND/LTN	F14-9231-000	KVT
230V AUS	F14-9241-000	KVY
230V ASIA	F14-9241-000	KVZ
230V CHN	F14-9251-000	STC
230V KOR	F14-9261-000	STD

Satera MF4150

100V JP	F14-9211-000	JVP
----------------	---------------------	------------

i-SENSYS MF4150

230V EU1	F14-9291-000	JVN
230V EU2	F14-9291-000	KVW
230V EU3	F14-9291-000	KVX

imageCLASS MF4140

230V AUS	F14-9242-000	STW
-----------------	---------------------	------------

i-SENSYS MF4140

230V EU1	F14-9292-000	JVQ
-----------------	---------------------	------------

230V EU2 F14-9292-000 STE

230V EU3 F14-9292-000 STF

Satera MF4130

100V JP F14-9213-000 JVR

imageCLASS MF4122

230V ASIA F14-9244-000 SUB

230V CHN F14-9254-000 SUC

imageCLASS MF4120

230V CHN wo
MZ F14-9255-000 SUD

230V KOR F14-9264-000 SUE

Satera MF4120

100V JP F14-9214-000 JVT

i-SENSYS MF4120

230V EU1 F14-9294-000 JVS

230V EU2 F14-9294-000 STZ

Contents

A	ASSEMBLY LOCATION DIAGRAM	2-1
001	ACCESSORIES	2-2
100	EXTERNAL COVERS, PANELS, ETC.	2-3
101	INTERNAL COMPONENTS 1	2-6
102	INTERNAL COMPONENTS 2	2-8
103	INTERNAL COMPONENTS 3	2-10
104	BASE PLATE ASS'Y	2-13
310	PAPER PICK-UP ASSY	2-15
400	READER ASS'Y	2-17
810	FIXING ASS'Y	2-19
A10	ADF ASS'Y (MF4150/4130)	2-21

FIGURE A ASSEMBLY LOCATION DIAGRAM

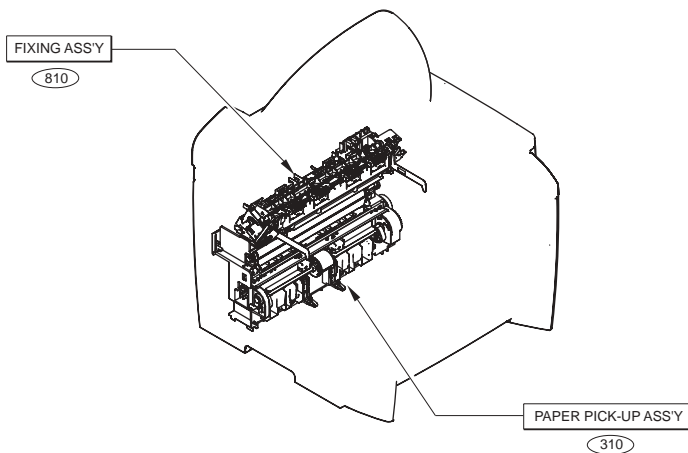
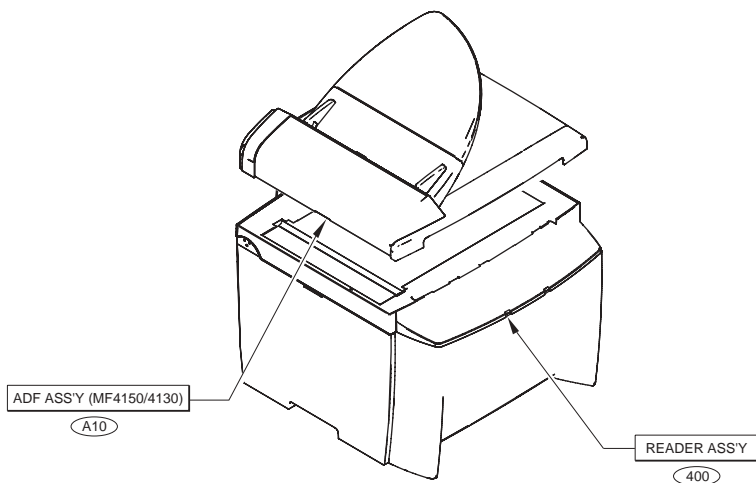


FIGURE 001 ACCESSORIES

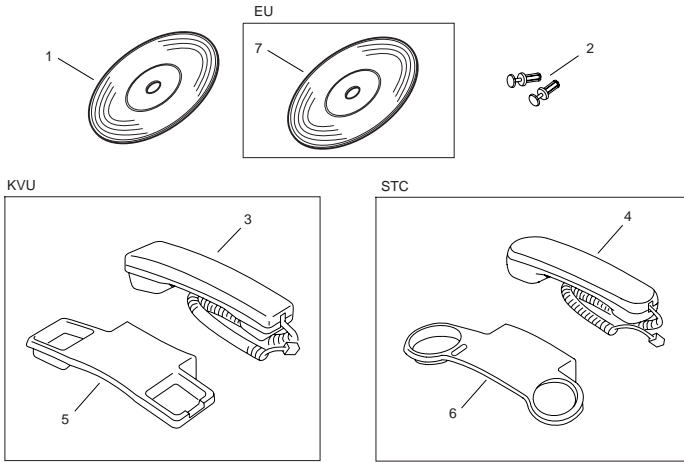


FIGURE & KEY NO.	PARTS NUMBER	RANK	QTY	DESCRIPTION	SERIAL NUMBER/REMARKS	SVC
Fig.001	NPN		RF	ACCESSORIES		
1	FK2-5233-000		1	CD-ROM, USER SOFTWARE	JVM	
1	FK2-4558-000		1	CD-ROM, USER SOFTWARE	JVP/JVR/JVT	
1	FK2-4647-000		1	CD-ROM, USER SOFTWARE	KVT	
1	FK2-4560-000		1	CD-ROM, USER SOFTWARE	KVU/KVY/KVZ/STC/STD/STW/SUB/SUC/SUD/SUE	
2	HC1-2034-000		2	RIVET	KVU/STC	
3	FK2-4391-000		1	HANDSET UNIT	KVU	
4	FK2-4389-000		1	HANDSET UNIT	STC	
5	HB1-4978-000		1	HOLDER, HANDSET CRADLE	KVU	
6	HC1-2012-000		1	HOLDER, HANDSET CRADLE	STC	
7	FK2-4561-000		1	CD-ROM, UTILITY	EU	

FIGURE 100 EXTERNAL COVERS, PANELS, ETC.

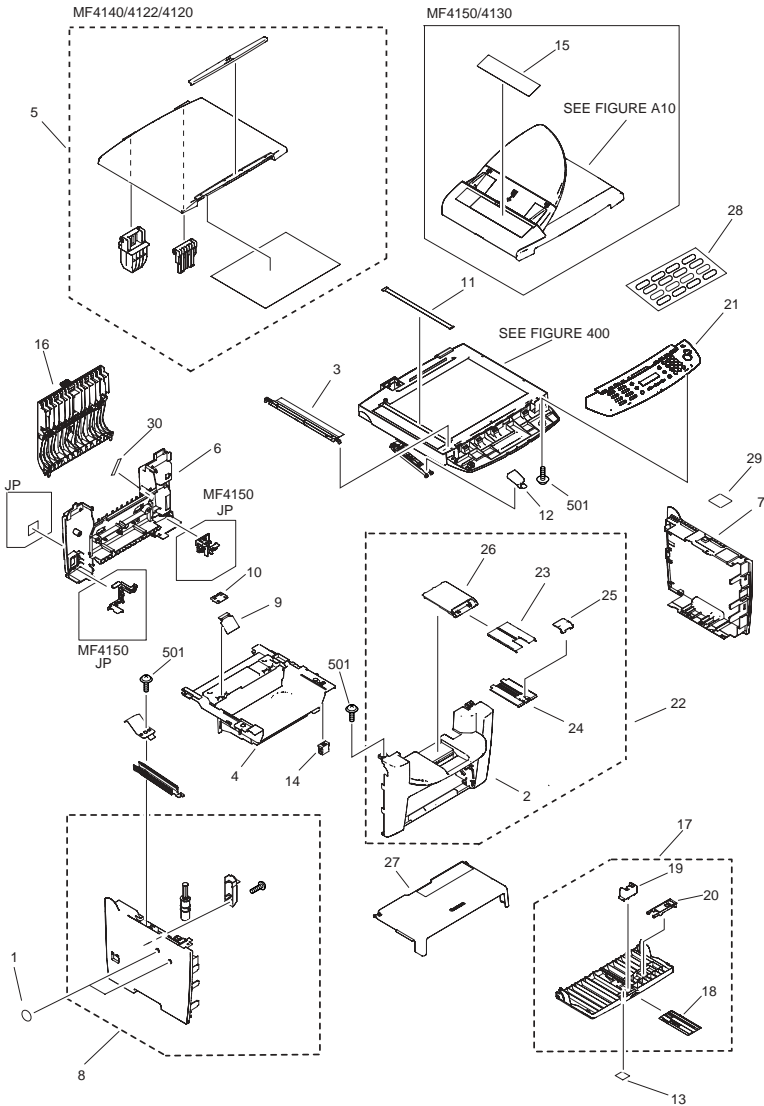


FIGURE & KEY NO.	PARTS NUMBER	R A N K	Q'TY	DESCRIPTION	SERIAL NUMBER/ REMARKS	S V C
Fig.100	NPN		RF	EXTERNAL COVERS, PANELS, ETC.		
1	FC6-5204-000		2	SHEET, HANDSET		
2	FL2-5626-000		1	COVER UNIT, FRONT		
3	FL2-5620-000		1	HOLDER, DOCUMENT RELEASE SHEET		
4	FC7-3554-000		1	COVER, CRG		
5	FM2-8907-000		1	COPYBORD COVER ASS'Y		
6	FC7-3743-000		1	COVER, REAR	MF4130/4122/4120	
6	FC7-3561-010		1	COVER, REAR	MF4150/4140	
7	FC7-3744-000		1	COVER, RIGHT	100V	
7	FC7-3566-010		1	COVER, RIGHT	120/230V	
8	FM2-8924-000		1	LEFT COVER ASS'Y	100V	
8	FM2-8923-000		1	LEFT COVER ASS'Y	120/230V	
9	FC7-3648-000		1	SHEET, PAPER FEED		
10	FC7-3649-000		1	CAP, SHEET		
11	FC7-3710-000		1	PLATE, PAPER SIZE	A	
11	FC7-3638-000		1	PLATE, PAPER SIZE	AB	
11	FC7-3711-000		1	PLATE, PAPER SIZE	INCH	
11	FC7-3712-000		1	PLATE, PAPER SIZE	INCH/AB	
12	FC7-3714-000		1	RETAINER, STAY		
13	FC5-4820-000		1	EMBLEM, SATERA	100V	
13	FC7-3728-000		1	EMBLEM, LASER SHOT	120/230V	
14	FC7-3729-000		1	MAGNET		
15	FC7-3753-000		1	SHEET, GLASS CLEANING	ADF MODEL 100V	
15	FC7-3752-000		1	SHEET, GLASS CLEANING	ADF MODEL i-SENSYS MF4150 230V	
15	FC7-3751-000		1	SHEET, GLASS CLEANING	ADF MODEL imageCLASS MF4150 120/230V	
16	FM2-8870-000		1	DUPLEXING COVER UNIT		
17	FM2-8883-000		1	PAPER PICK-UP TRAY ASS'Y		
18	FC7-3639-000		1	PLATE, EXTENSION		
19	FC7-3656-000		1	STOPPER, PAPER		
20	FC7-3657-000		1	STOPPER, CARD		

FIGURE & KEY NO.	PARTS NUMBER	R A N K	Q'TY	DESCRIPTION	SERIAL NUMBER/ REMARKS	S V C
21	FM2-8903-000		1	CONTROL PANEL ASS'Y	MF4120 ILLUSTRATION	
21	FM2-8919-000		1	CONTROL PANEL ASS'Y	MF4120 JAPANESE	
21	FM2-8905-000		1	CONTROL PANEL ASS'Y	MF4120 KOREAN	
21	FM2-8920-000		1	CONTROL PANEL ASS'Y	MF4120 SIMPLIFIED CHINESE	
21	FM2-8904-000		1	CONTROL PANEL ASS'Y	MF4122 ENGLISH	
21	FM2-8906-000		1	CONTROL PANEL ASS'Y	MF4122 SIMPLIFIED CHINESE	
21	FM2-8922-000		1	CONTROL PANEL ASS'Y	MF4140 ENGLISH	
21	FM2-8918-000		1	CONTROL PANEL ASS'Y	MF4140 ILLUSTRATION	
21	FM2-8899-000		1	CONTROL PANEL ASS'Y	MF4150 ENGLISH	
21	FM2-8898-000		1	CONTROL PANEL ASS'Y	MF4150 ILLUSTRATION	
21	FM2-8869-000		1	CONTROL PANEL ASS'Y	MF4150 JAPANESE	
21	FM2-8901-000		1	CONTROL PANEL ASS'Y	MF4150 KOREAN	
21	FM2-8900-000		1	CONTROL PANEL ASS'Y	MF4150 SIMPLIFIED CHINESE	
21	FM2-8902-000		1	CONTROL PANEL ASS'Y	MF4150 TRADITIONAL CHINESE	
21	FM2-8897-000		1	CONTROL PANEL ASS'Y	MF4150 US ENGLISH	
22	FM2-8908-000		1	FRONT COVER ASS'Y		
23	FC7-3596-000		1	TRAY, PAPER DELIVERY		
24	FC7-3597-000		1	TRAY, PAPER DELIVERY EXTENSION		
25	FC7-3598-000		1	STOPPER, PAPER DELIVERY		
26	FC7-3726-000		1	COVER, PAPER DELIVERY TRAY		
27	FC7-3573-000		1	COVER, DUST		
28	FC7-3788-000		1	LABEL, DESTINATION		
29	FC7-3764-010		1	LABEL, JAM CLEARING		
30	FC7-3817-000		1	CAP, COVER, REAR		
501	XB4-7300-807		AR	SCREW, TAP TIGHT, BINDING HEAD		
	FC7-3766-000		1	LABEL, JAM CLEARING, ADF2	MF4130/4150	
	FC7-3827-000		1	LABEL, JAM CLEARING, P2	MF4120/4122/4140	

FIGURE 101 INTERNAL COMPONENTS 1

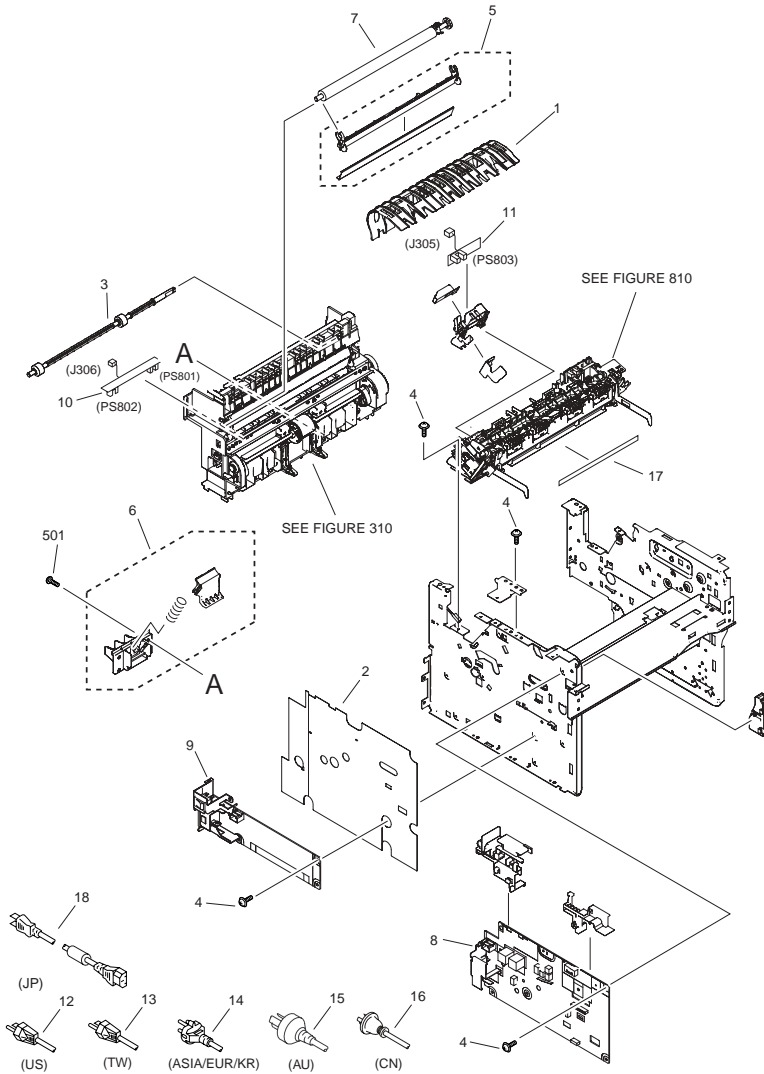


FIGURE & KEY NO.	PARTS NUMBER	R A N K	Q'TY	DESCRIPTION	SERIAL NUMBER/REMARKS	S V C
Fig.101	NPN		RF	INTERNAL COMPONENTS 1		
1	FC7-3558-000		1	GUIDE, INNER FEED		
2	FC7-3679-000		1	SHEET, INSULATING		
3	FL2-5629-000		1	DUPLEXING FEED ROLLER ASS'Y		
4	XA9-1420-000		11	SCREW, WWASHER, M3X8		
5	FM2-8912-000		1	TRANSFER GUIDE ASS'Y		
6	FM2-8874-000		1	SEPARATION PAD ASS'Y		
7	FM2-8914-000		1	TRANSFER ROLLER ASS'Y		
8	FM2-9910-000		1	HVT PCB ASS'Y	100V	
8	FM2-9911-000		1	HVT PCB ASS'Y	120V	
8	FM2-9912-000		1	HVT PCB ASS'Y	230V	
9	FK2-3492-000		1	POWER SUPPLY ASSEMBLY	100V	
9	FK2-3502-000		1	POWER SUPPLY ASSEMBLY	120V	
9	FK2-3494-000		1	POWER SUPPLY ASSEMBLY	230V(Except KOR)	
10	FM2-9914-000		1	SENSOR PCB ASS'Y		
11	FM2-9916-000		1	SENSOR PCB ASS'Y		
12	FK2-1313-000		1	CORD, POWER	US	
13	FK2-1311-000		1	CORD, POWER	TW	
14	FK2-1314-000		1	CORD, POWER	ASIA/EUR/KR	
15	FK2-1317-000		1	CORD, POWER	AU	
16	FK2-1316-000		1	CORD, POWER	CN	
17	FC7-3727-000		1	LABEL, HIGH TMP. CAUTION		
18	FK2-4390-000		1	POWER CORD	JP	
501	XB4-5401-009		4	SCREW, TAP, M4X10		
	FK2-5232-000		1	POWER SUPPLY ASSEMBLY	KOR	

FIGURE 102 INTERNAL COMPONENTS 2

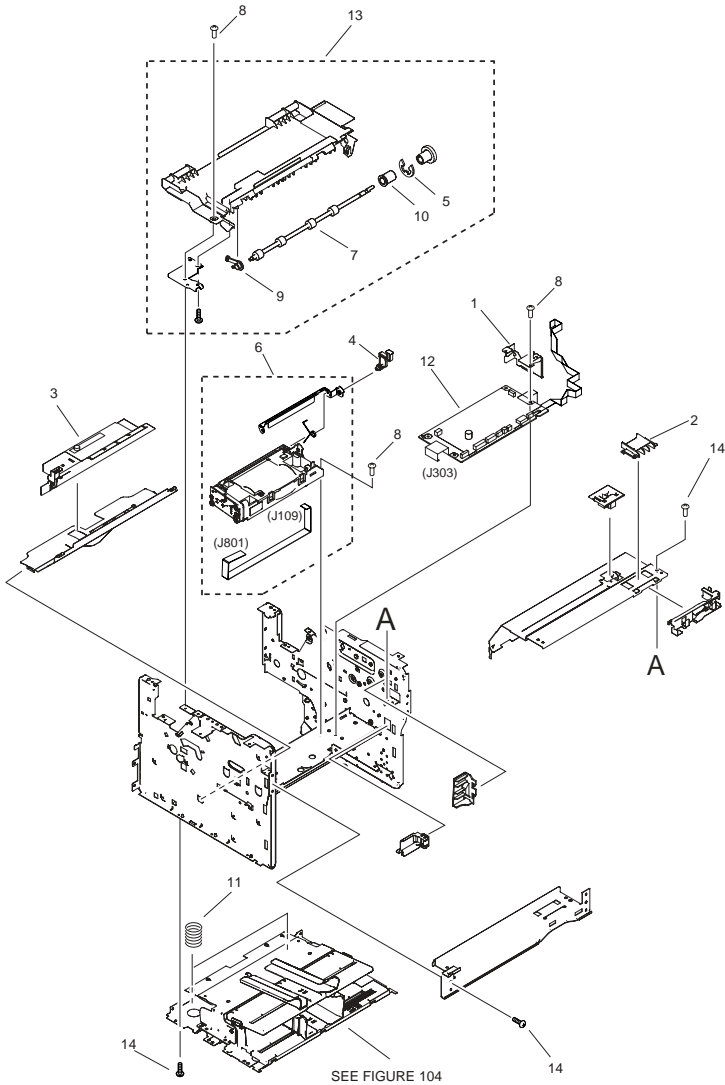


FIGURE & KEY NO.	PARTS NUMBER	RANK	Q'TY	DESCRIPTION	SERIAL NUMBER/REMARKS	SVC
Fig.102	NPN		RF	INTERNAL COMPONENTS 2		
1	RC1-1999-000		1	CROSSMEMBER, ENGINE CONTROLLER		
2	FC7-3700-000		1	COVER, FRONT LOWER		
3	FM2-8882-000		1	TONER SENSOR ASS'Y		
4	FC7-3666-000		1	ARM, SHUTTER		
5	FC6-5210-000		1	RETAINING RING (E-TYRE)		
6	FM2-9907-000		1	LASER SCANNER ASS'Y		
7	FC7-3646-000		1	ROLLER, PAPER FEED		
8	XA9-1501-000		AR	SCREW, RS, M3X10		
9	FU5-1804-000		1	BUSHING, ROLLER, LEFT		
10	FU5-1805-000		1	BUSHING, ROLLER, RIGHT		
11	RU5-2492-000		2	SPRING, COMPRESSION		
12	FM2-9909-000		1	DCNT PCB ASS'Y		
13	FM2-8884-010		1	PAPER FEED COVER ASS'Y		
14	XA9-1495-000		AR	SCREW, RS, M3X6		
	FC7-3765-000		1	LABEL, JAM CLEARING, ADF1	MF4130/4150	
	FC7-3767-000		1	LABEL, JAM CLEARING, P1	MF4120/4122/4140	

FIGURE 103 INTERNAL COMPONENTS 3

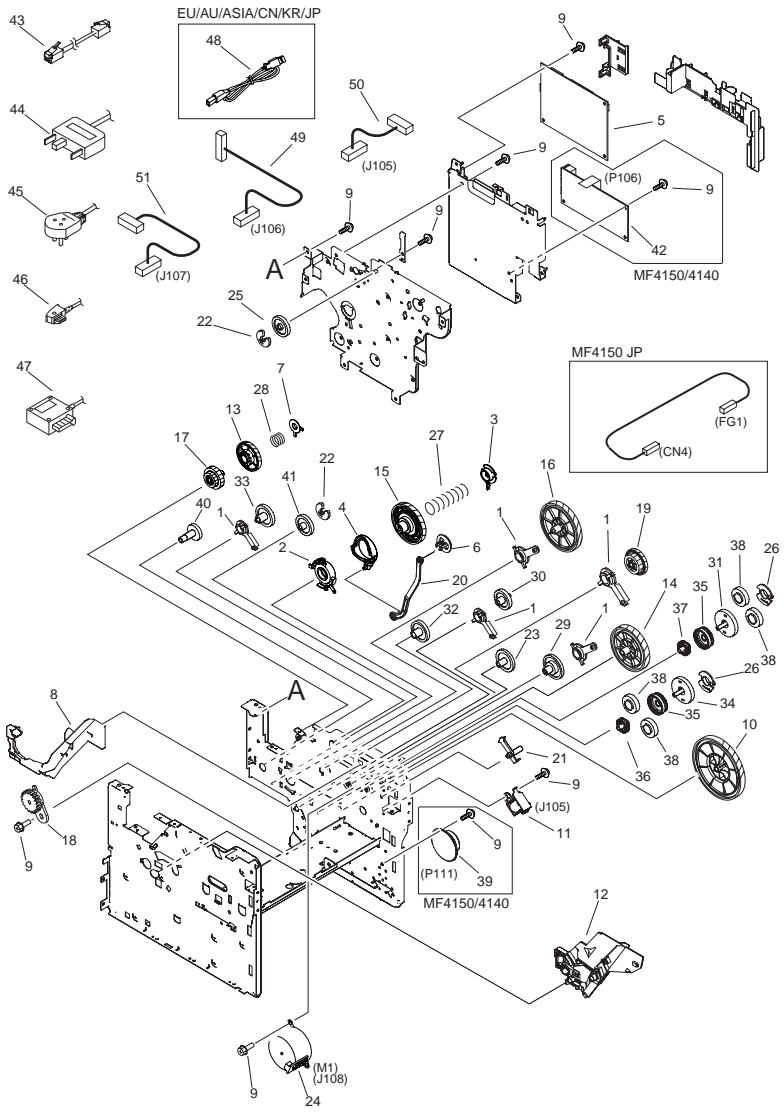


FIGURE & KEY NO.	PARTS NUMBER	R A N K	Q'TY	DESCRIPTION	SERIAL NUMBER/ REMARKS	S V C
Fig.103	NPN		RF	INTERNAL COMPONENTS 3		
1	RA0-1019-000		5	BUSHING		
2	RC1-1953-000		1	BUSHING		
3	RC1-1954-000		1	BUSHING		
4	RC1-1955-000		1	CAM, COUPLING		
5	FK2-3699-000		1	SCNT PCB ASS'Y	MF4120/4122	
5	FK2-3698-000		1	SCNT PCB ASS'Y	MF4130	
5	FM3-2186-000		1	SCNT PCB ASS'Y	MF4140	
5	FM3-2185-000		1	SCNT PCB ASS'Y	MF4150	
6	RC1-1957-000		1	STOPPER		
7	RC1-1959-000		1	BUSHING		
8	FC7-3690-000		1	GUIDE, CARTRIDGE, RIGHT		
9	XA9-1495-000		AR	SCREW, RS, M3X6		
10	RU5-0503-000		1	GEAR, 166T/87T		
11	FK2-3510-000		1	SOLENOID		
12	FM2-8879-000		1	CARTRIDGE GUIDE LEFT ASS'Y		
13	RU5-0505-000		1	GEAR, 74T		
14	RU5-0174-000		1	GEAR, 117T		
15	RU5-0175-000		1	GEAR, 108T		
16	RU5-0176-000		1	GEAR, 129T		
17	RU5-0506-000		1	GEAR, 35T/18T		
18	RA0-1172-000		1	GEAR, 17T		
19	RU5-0179-000		1	GEAR, 66T/25T		
20	FC7-3647-000		1	ARM, CARTRIDGE		
21	FC7-3653-000		1	ARM, SOLENOID		
22	FC6-5210-000		1	RETAINING RING (E-TYRE)		
23	FU7-0541-000		1	GEAR, 32T		
24	RK2-0777-000		1	MOTOR, STEPPING, DC		
25	FU7-0544-000		1	GEAR, 29T		
26	RC1-3579-000		2	BUSHING		
27	FU6-2254-000		1	SPRING, COMPRESSION		
28	FU6-2255-000		1	SPRING, COMPRESSION		

FIGURE & KEY NO.	PARTS NUMBER	R A N K	Q'TY	DESCRIPTION	SERIAL NUMBER/REMARKS	S V C
29	FU7-0538-000		1	GEAR, 68/17T		
30	FU7-0539-000		1	GEAR, 28T		
31	FU7-0540-000		1	GEAR, 37T		
32	FU7-0542-000		1	GEAR, 30T		
33	FU7-0543-000		1	GEAR, 31T		
34	FU7-0545-000		1	GEAR, 38T		
35	RU5-0312-000		2	GEAR		
36	RU5-0313-000		1	GEAR		
37	RU5-0314-000		1	GEAR		
38	RU5-0315-000		4	GEAR		
39	FK2-3506-000		1	SPEAKER	MF4150/4140	
40	FU7-0546-000		1	GEAR, 23T		
41	FU7-0547-000		1	GEAR, 29T		
42	FK2-5790-000		1	NCU PCB ASS'Y	MF4140 AU	
42	FK2-3703-000		1	NCU PCB ASS'Y	MF4150 JP	
42	FK2-3704-000		1	NCU PCB ASS'Y	MF4150 TW	
42	FK2-3702-000		1	NCU PCB ASS'Y	MF4150/4140 US/EU/ ASIA/CN/KR, MF4150 AU	
43	HH2-2824-000		1	MODULAR CORD		
44	HK1-0547-000		1	MODULAR CORD		
45	HK1-0550-000		1	MODULAR CORD		
46	HK1-0544-000		1	MODULAR CORD		
47	HK1-0559-000		1	MODULAR CORD		
48	FK2-3049-000		1	CABLE, USB	EU/AU/ASIA/CN/KR/JP	
49	FM2-9925-000		1	CABLE, DUPLEX		
50	FM2-9926-000		1	CABLE, RELAY BOARD		
51	FM2-9929-000		1	CABLE, DCNT-SCNT		

FIGURE 104
BASE PLATE ASS'Y

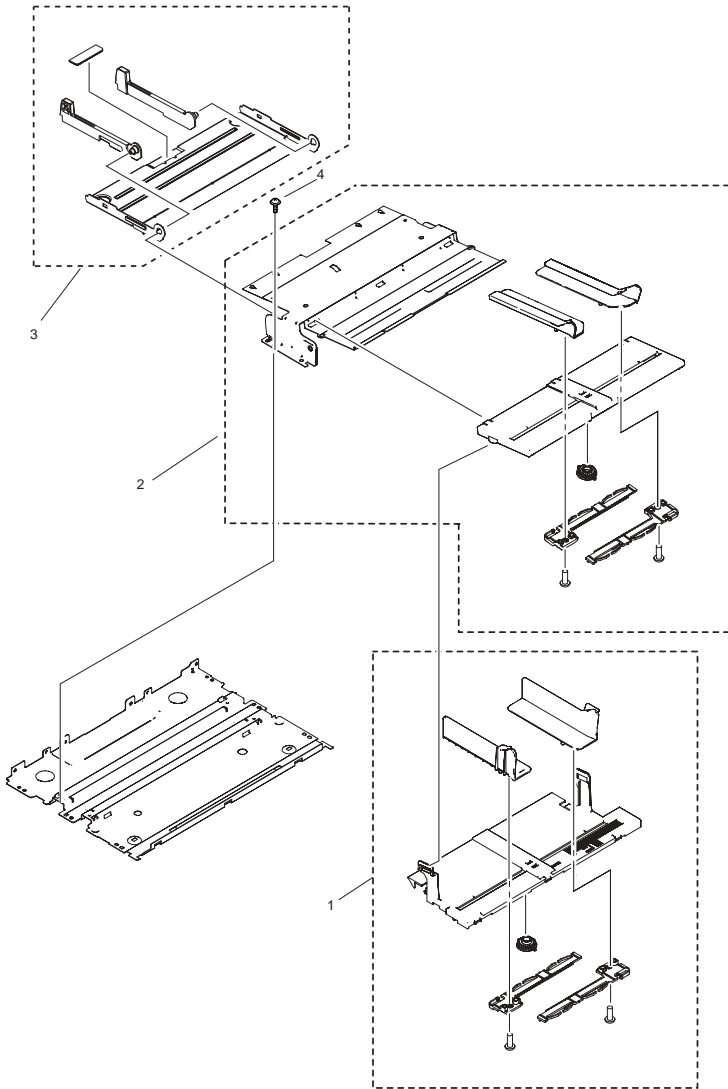


FIGURE & KEY NO.	PARTS NUMBER	RANK	Q'TY	DESCRIPTION	SERIAL NUMBER/REMARKS	SVC
Fig.104	NPN		RF	BASE PLATE ASS'Y		
1	FM2-8876-000		1	CENTER PLATE GUIDE RAIL ASS'Y		
2	FM2-8877-000		1	FEED GUIDE RAIL ASS'Y		
3	FM2-8910-000		1	LIFTING PLATE ASS'Y		
4	XA9-1495-000		4	SCREW, RS, M3X6		

FIGURE & KEY NO.	PARTS NUMBER	R A N K	Q'TY	DESCRIPTION	SERIAL NUMBER/ REMARKS	S V C
Fig.310	FM2-8871-000		1	PAPER PICK-UP ASS'Y		
1	FK2-3508-000		1	SOLENOID		
2	FM2-8872-000		1	FEED CROSSMEMBER ASS'Y		
3	FM2-8911-000		1	PAPER PICK-UP SHAFT ASS'Y		
4	RC1-1960-000		1	RATCHET		
5	RC1-1990-000		1	BUSHING		
6	RC1-1993-000		1	SPRING, TORSION		
7	RC1-1994-000		1	SPRING, TORSION		
8	RC1-2012-000		1	SPRING, LEAF		
9	RC1-2040-000		1	FLAG, REGIST. SENSOR		
10	RC1-2041-000		1	SPRING, TORSION		
11	FC7-3813-000		1	FLAG, PAPER WIDTH SENSOR		
12	RC1-2043-000		1	SPRING, TORSION		
13	RC1-2044-000		2	BUSHING		
14	FU6-2255-000		1	SPRING, COMPRESSION1		
15	RC1-5550-000		1	PLATE,TRANSFER GROUNDING,FRONT		
16	RC1-5551-000		2	PAD, SUB		
17	RC1-5552-000		1	LEVER, CARTRIDGE DETECT		
18	RC1-5553-000		2	SPRING, TORSION		
19	RL1-0266-000		1	ROLLER, PICK-UP		
20	RL1-0268-000		1	ROLLER, FEED		
21	RM1-2046-000		1	PAPER PICK-UP GEAR ASS'Y		
22	RU5-0180-000		1	GEAR, 21T/29T		
23	XA9-1503-000		2	SCREW, TAP, M3X6		
501	XB4-5401-009		1	SCREW, TAP, M4X10		

FIGURE 400
READER ASS'Y

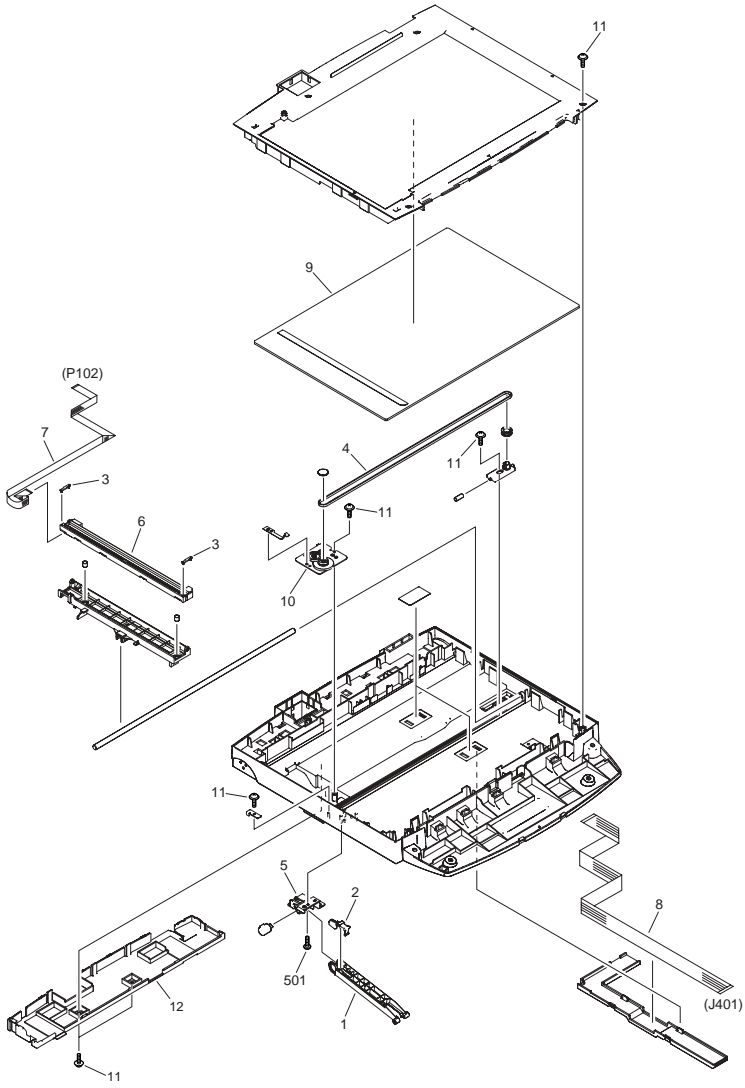


FIGURE & KEY NO.	PARTS NUMBER	R A N K	Q'TY	DESCRIPTION	SERIAL NUMBER/ REMARKS	S V C
Fig.400	FM2-8913-000		1	READER ASS'Y	MF4140/4120/4122	
Fig.400	FM2-8867-000		1	READER ASS'Y	MF4150/4130	
1	FC7-3615-000		1	STAY, READER		
2	FC7-3616-000		1	RETAINER, DAMPER		
3	FC7-3623-000		1	SPACER, CIS		
4	FC7-3630-000		1	BELT, TIMING		
5	FC7-3713-000		1	HOLDER, DAMPER		
6	FK2-2869-000		1	CONTACT IMAGE SENSOR ASS'Y		
7	FK2-3516-000		1	CABLE, FLAT, SCNT-CIS		
8	FK2-3517-000		1	CABLE, FLAT, SCNT-OP		
9	FL2-5621-000		1	COPYBOARD GLASS ASS'Y		
10	FM2-8868-000		1	CIS DRIVE MOTOR ASS'Y		
11	XA9-0476-000		AR	SCREW,TP M3X8		
12	FC7-3553-000		1	GUIDE, CABLE		
501	XB4-5401-000		3	SCREW, TAP, M4X10		

FIGURE 810
FIXING ASS'Y

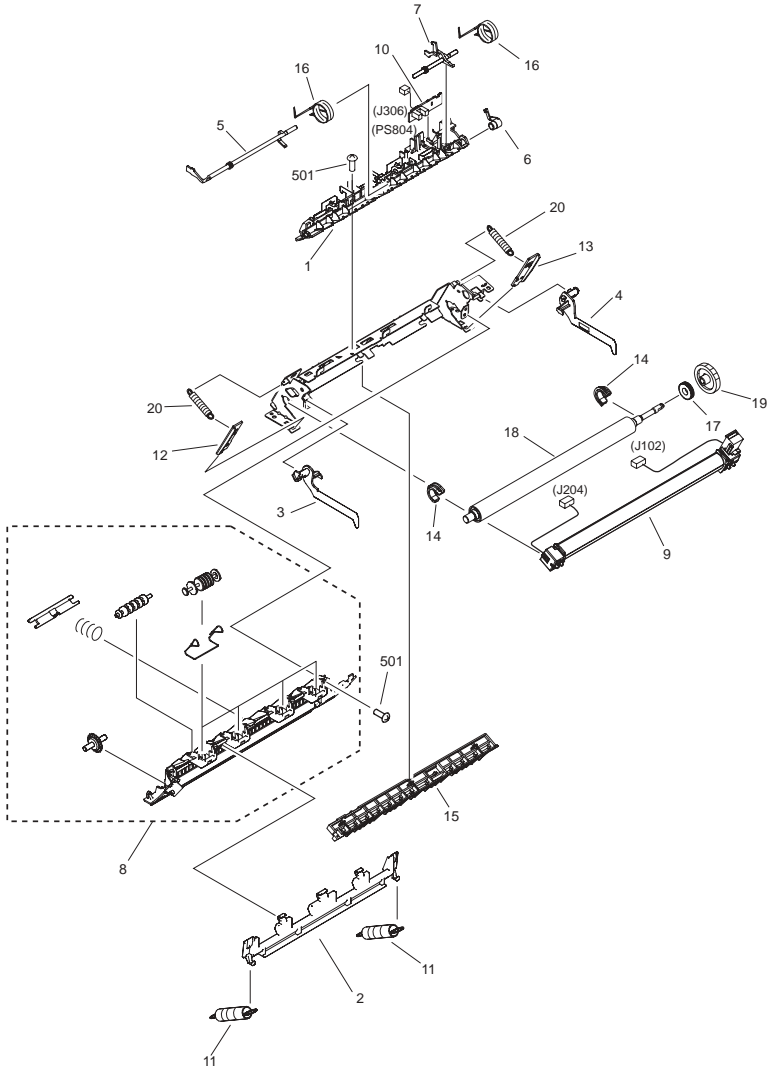


FIGURE & KEY NO.	PARTS NUMBER	R A N K	Q'TY	DESCRIPTION	SERIAL NUMBER/ REMARKS	S V C
Fig.810	FM2-8890-000		1	FIXING ASS'Y	100V	
Fig.810	FM2-8891-000		1	FIXING ASS'Y	120V	
Fig.810	FM2-8892-000		1	FIXING ASS'Y	230V	
1	FC7-3557-000		1	GUIDE, SEPARATION		
2	FC7-3641-000		1	GUIDE, ENTRANCE		
3	FC7-3642-000		1	LEVER, PRESSURE RELEASE, LEFT		
4	FC7-3643-000		1	LEVER, PRESSURE RELEASE, RIGHT		
5	FC7-3644-000		1	FLAG, PAPER DELIVERY SENSOR		
6	FC7-3645-000		1	BUSHING		
7	FC7-3652-000		1	FLAG, PAPER WIDTH SENSOR		
8	FM2-8885-000		1	FIXING COVER UNIT		
9	FM2-8917-000		1	FIXING FILM ASS'Y	100V	
9	FM2-8915-000		1	FIXING FILM ASS'Y	120V	
9	FM2-8916-000		1	FIXING FILM ASS'Y	230V	
10	FM3-0255-000		1	SENSOR PCB ASS'Y		
11	FU6-2875-000		2	SPRING, TENSION		
12	RC1-2066-000		1	PLATE, PRESSURE, LEFT		
13	RC1-2067-000		1	PLATE, PRESSURE, RIGHT		
14	RC1-2079-000		2	BUSHING		
15	RC1-2097-000		1	GUIDE, ENTRANCE		
16	RC1-2098-000		2	SPRING, TORSION		
17	RC1-2139-000		1	BUSHING		
18	RC1-5572-000		1	ROLLER, PRESSURE		
19	RU5-0523-000		1	GEAR, 37T		
20	RU5-2178-000		2	SPRING, TENSION		
501	XB2-8300-609		3	SCREW, RS, M3X6		

FIGURE A10
ADF ASS'Y (MF4150/4130)

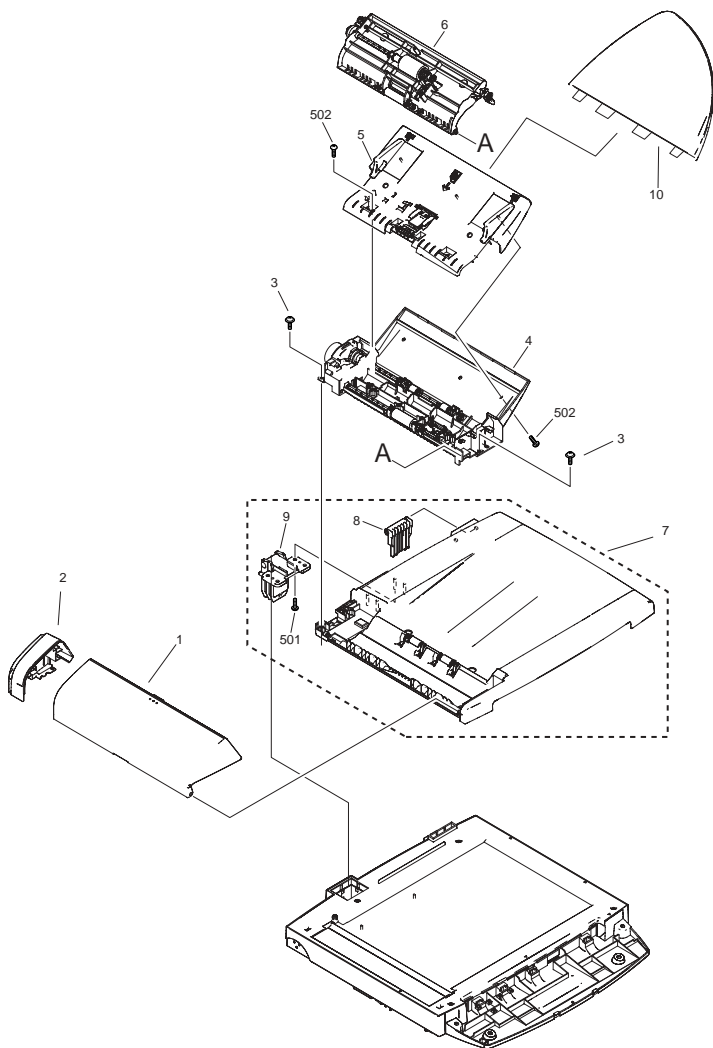


FIGURE & KEY NO.	PARTS NUMBER	R A N K	Q'TY	DESCRIPTION	SERIAL NUMBER/ REMARKS	S V C
Fig.A10	NPN		RF	ADF ASS'Y	(MF4150/4130)	
1	FC7-3544-000		1	COVER, ADF, UPPER	EXCEPT JP	
1	FC7-3741-000		1	COVER, ADF, UPPER	JP	
2	FC7-3549-000		1	COVER, ADF, REAR	EXCEPT JP	
2	FC7-3742-000		1	COVER, ADF, REAR	JP	
3	XA9-0476-000		7	SCREW, TP M3X8		
4	FM2-8861-000		1	DOCUMENT FEED UNDER ASS'Y		
5	FM2-8862-000		1	DOCUMENT GUIDE ASS'Y		
6	FM2-8864-000		1	DOCUMENT FEED UPPER ASS'Y		
7	FM2-8865-000		1	ADF BASE ASS'Y		
8	FC7-3637-000		1	HINGE, ADF		
9	FC7-3702-000		1	HINGE, ADF		
10	FC7-3548-000		1	TRAY, DOCUMENT		
501	XB4-5401-009		4	SCREW, TAP, M4X10		
502	XB4-7300-807		3	SCREW, TP BH M3X8		

Prepared by
OIP HFE Promotion Center
CANON INC.

Canon